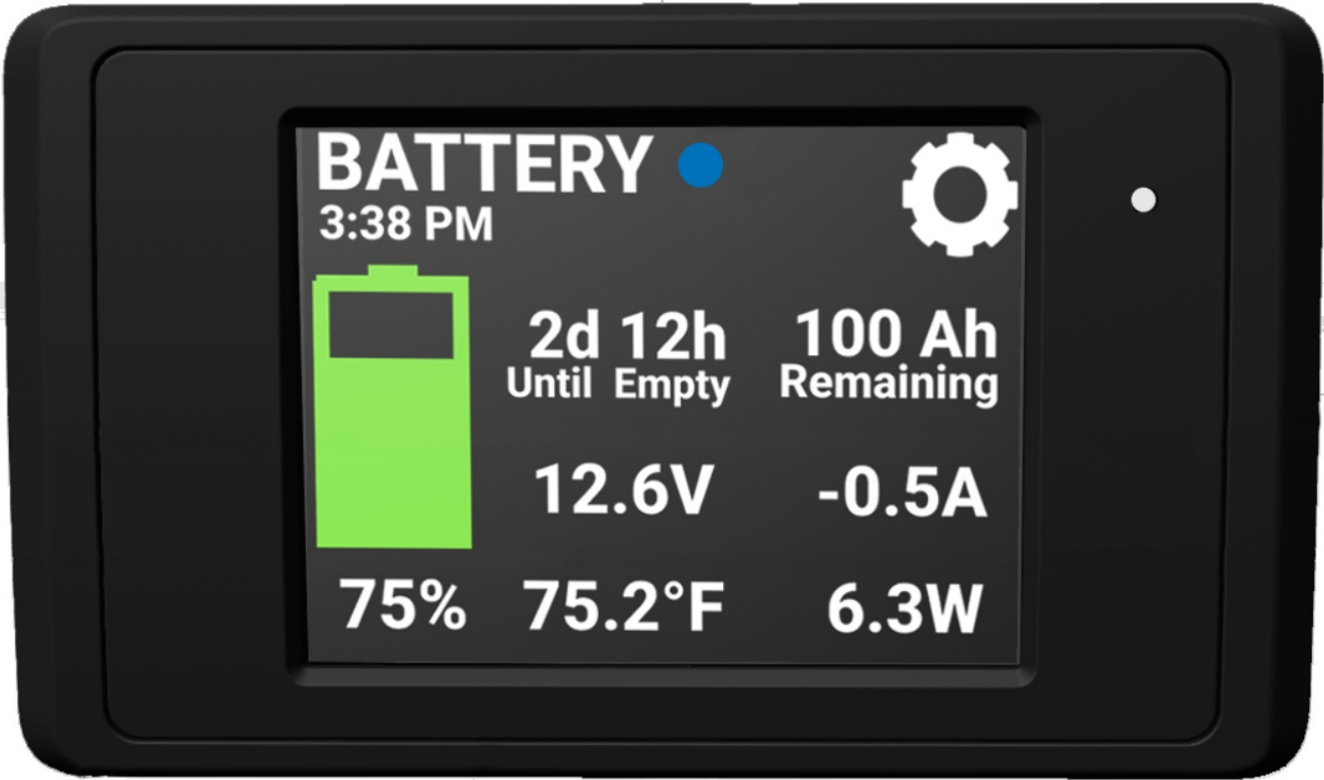


Go Power GP-RVC-DIS-3 Display PowerTrak User Guide

[Home](#) » [Go Power](#) » Go Power GP-RVC-DIS-3 Display PowerTrak User Guide 

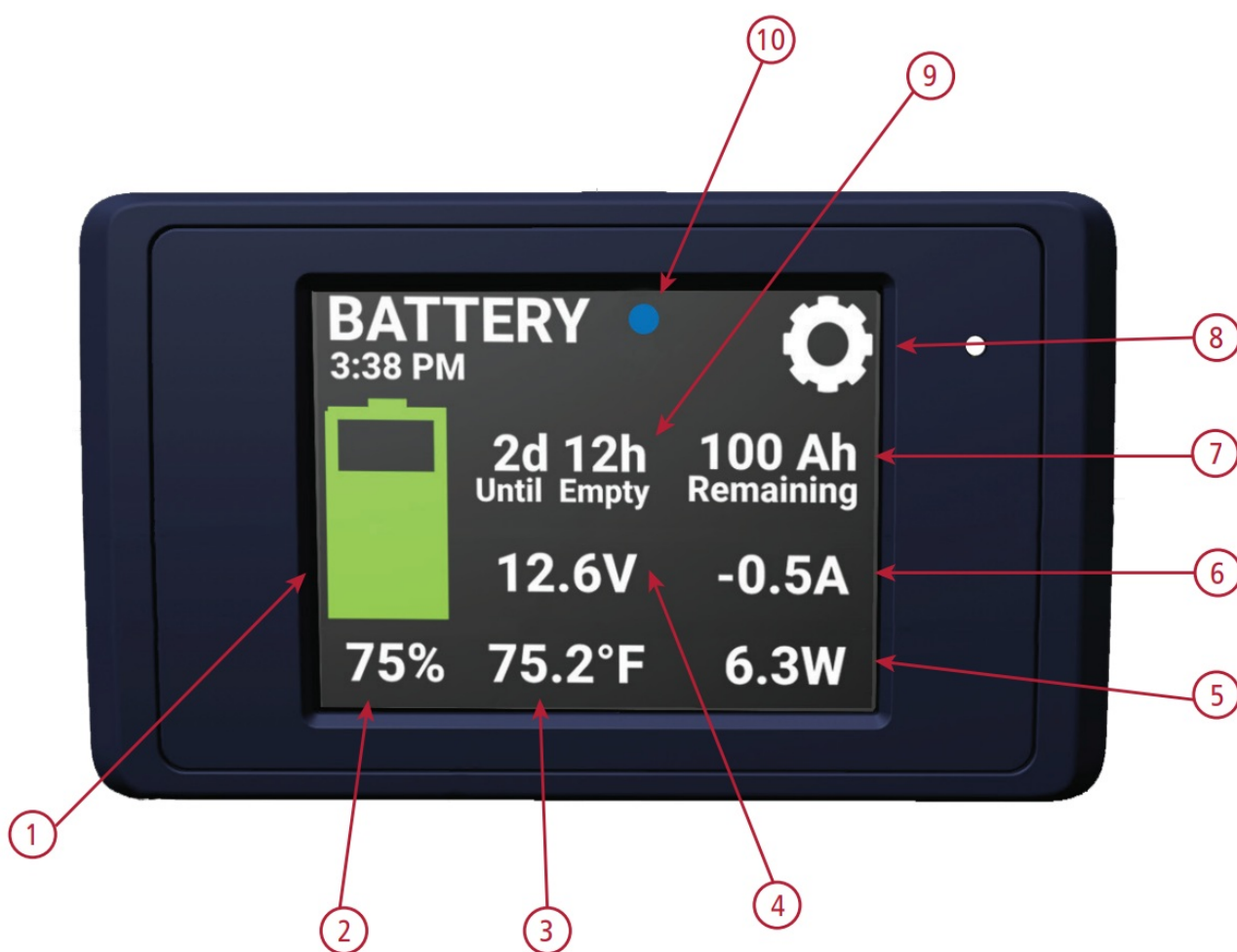
Go Power GP-RVC-DIS-3 Display PowerTrak



Contents

- 1 PRODUCT DESCRIPTION
- 2 INSTALLATION AND WIRING – OVERVIEW
 - 2.1 RECOMMENDED TOOLS
 - 2.2 WIRING DIAGRAMS
- 3 COMPATIBLE
- 4 SPECIFICATIONS
- 5 BATTERY MANAGER COMPONENTS
- 6 CUSTOMERS SUPPORT
- 7 Documents / Resources
 - 7.1 References
- 8 Related Posts

PRODUCT DESCRIPTION



No.	Description	No.	Description
1	Battery Image Indicator	6	Input/Output Current (+/-)
2	Battery Percentage Remaining	7	Ah Remaining
3	Battery Temperature	8	Settings
4	Battery Voltage	9	Time Remaining
5	Input/Output Power (+/-)	10	Connectivity Icon

INSTALLATION AND WIRING – OVERVIEW

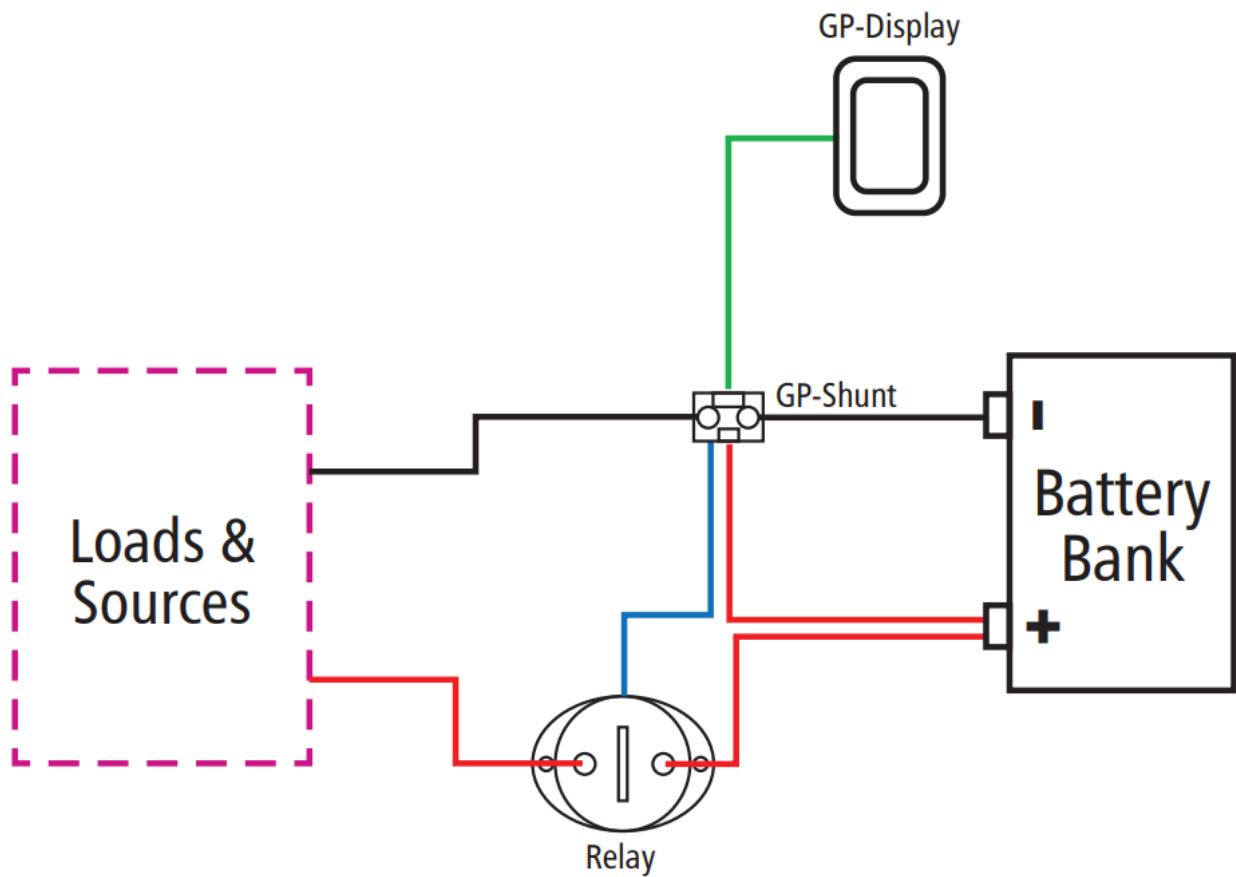
The GP-BMG shunt should be mounted as close to the battery as possible and the remote display is intended to be mounted on a wall.

RECOMMENDED TOOLS

- Wrench
- Drill
- 2" hole saw
- 2 ring terminals of appropriate size for battery cable
- Crimp tool for ring terminals

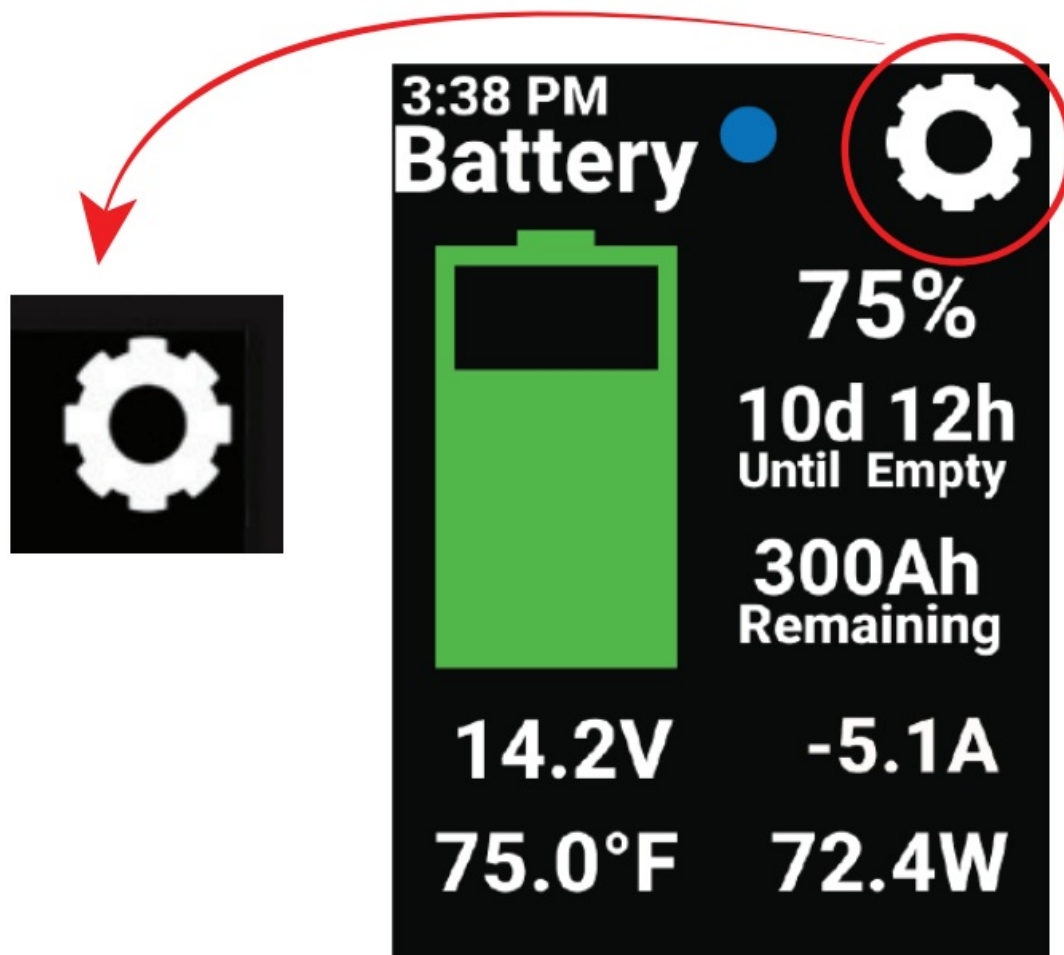
WIRING DIAGRAMS

The following wiring diagrams will be referenced in the next section.

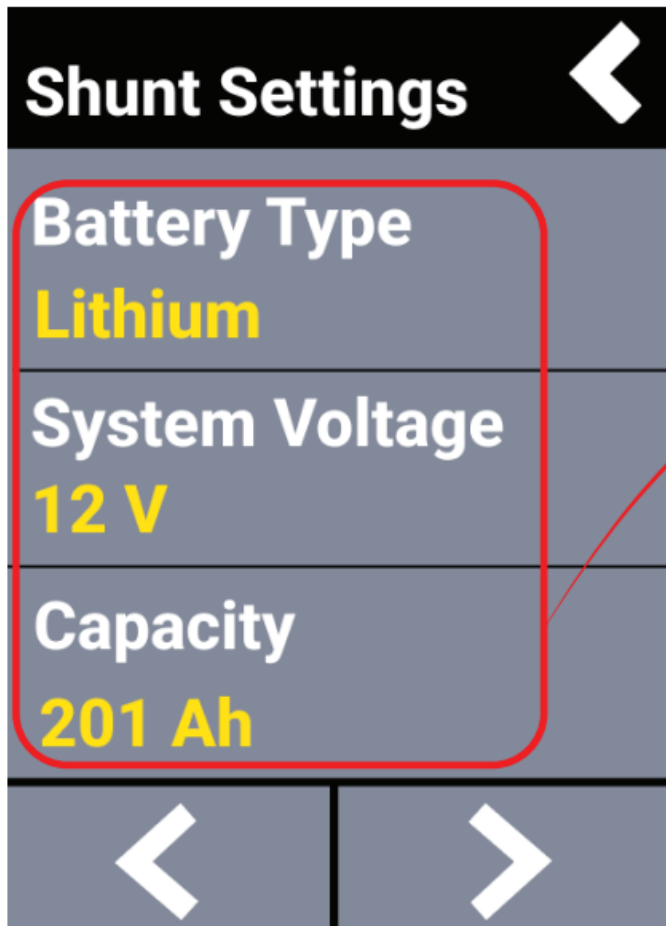


SETUP

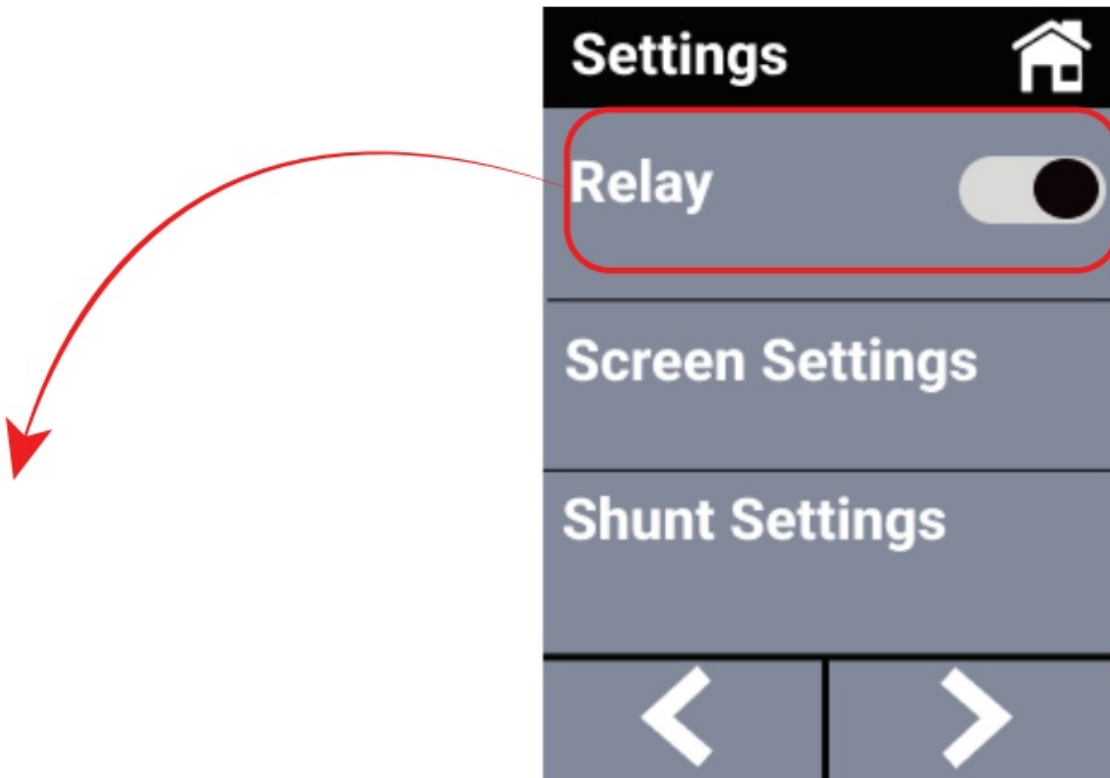
1. Tap the SETTINGS icon on the touchscreen display.



2. Next, set the battery type and system voltage.
3. Followed by setting the system size.



4. Lastly, enable an external relay if you have one, and you are done.



COMPATIBLE



NO.	DESCRIPTION	MODEL
1	Advanced Lithium Battery 300AH	GP-ADV LIFEPO4-300
2	Advanced Lithium Battery 100AH	GP-ADVLIFEPO4-100
3	IC2000 Watt Inverter (Dongle required)	GP-IC-2000-12
4	IC3000 Watt Inverter (Dongle required)	GP-IC-3000-12
5	30A MPPT Solar Controller	GP-MPPT-30-RVC

Cables sold separately.
Contact your Go Power! representative for more information.

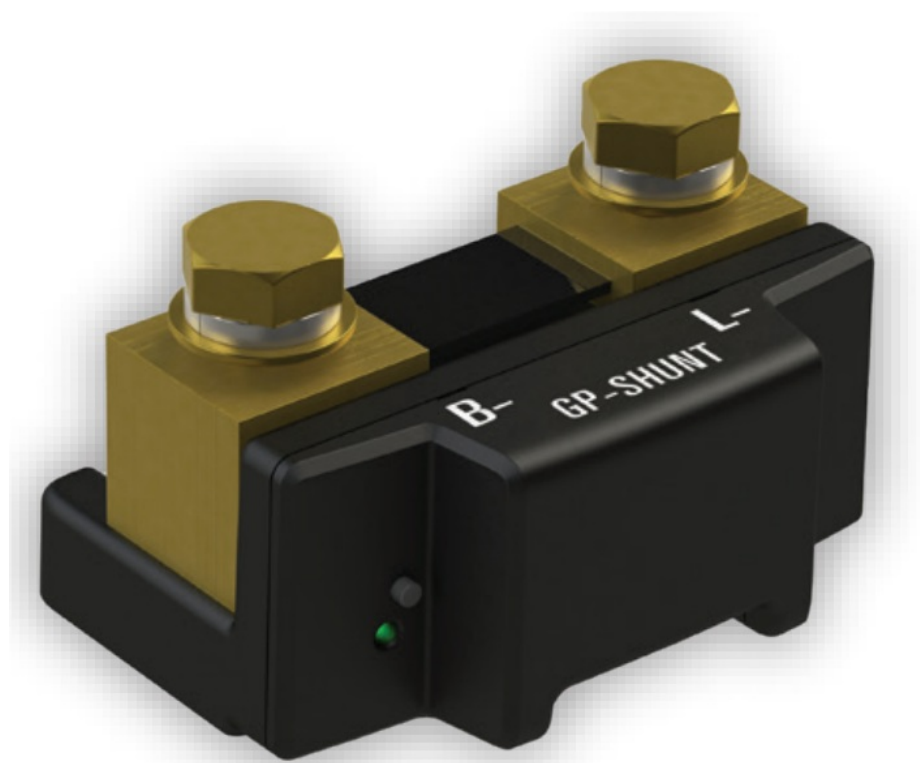
SPECIFICATIONS

DISPLAY	
Size	3.2"
Resolution	320×240
Touchscreen	Resistive
Viewing Angle	Short axis 70° Long axis 55°

Supply Voltage	7.5 to 76 VDC
Max Supply Current @ 12 VDC Input	150 mA
Max Supply Current @ 24 VDC Input	80 mA
MECHANICAL	
Dimensions	4.77" x 2.84" x 0.51"
ENVIRONMENTAL	
Operating Temperature Range	-20 to +50 °C
Storage Temperature Range	-30 to +70 °C
Humidity	5-95 % RH, non-condensing
COMMUNICATIONS	
Connectivity Range	50 meters (unobstructed)
WiFi Bandwidth	2.4 Ghz

BATTERY MANAGER COMPONENTS

- GP Shunt



- 1x GP-Shunt Power Cable



- 1x RV-C Extension Cable, 25ft



- 2x RV-C Adapter Cable



CUSTOMERS SUPPORT



POWER**TRAK**

Sold separately. Contact your Go Power! representative for more information.

Find tech tips, manuals and support at gopowersolar.com/BMG





[Go Power GP-RVC-DIS-3 Display PowerTrak](#) [pdf] User Guide
GP-RVC-DIS-3 Display PowerTrak, GP-RVC-DIS-3, Display PowerTrak, PowerTrak

References

- [User Manual](#)

[Manuals+](#), [Privacy Policy](#)

This website is an independent publication and is neither affiliated with nor endorsed by any of the trademark owners. The "Bluetooth®" word mark and logos are registered trademarks owned by Bluetooth SIG, Inc. The "Wi-Fi®" word mark and logos are registered trademarks owned by the Wi-Fi Alliance. Any use of these marks on this website does not imply any affiliation with or endorsement.