



# GO IN STYLE DAF LED Daytime Running Lights Installation Guide

[Home](#) » [GO IN STYLE](#) » GO IN STYLE DAF LED Daytime Running Lights Installation Guide 

## GO IN STYLE DAF LED Daytime Running Lights Installation Guide

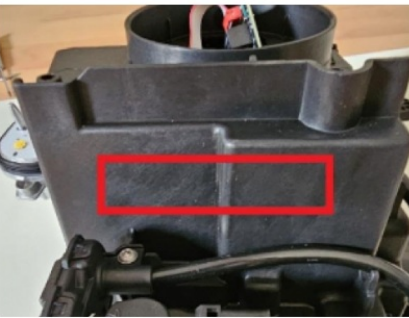
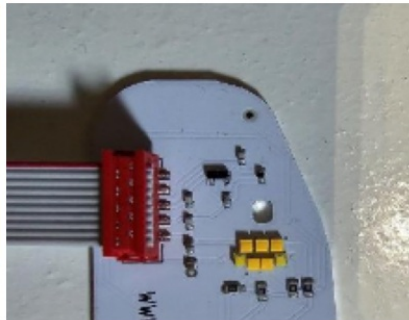


### Contents

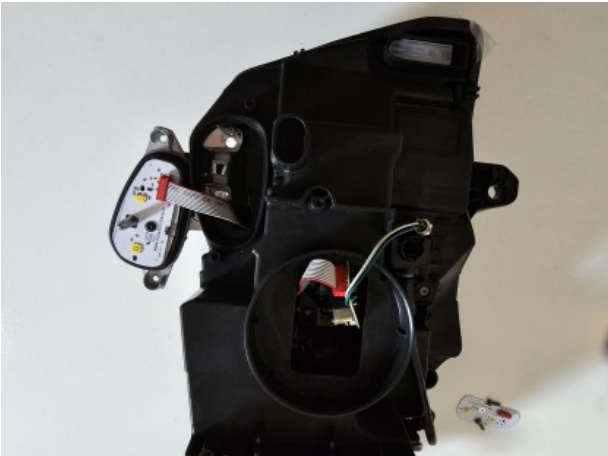
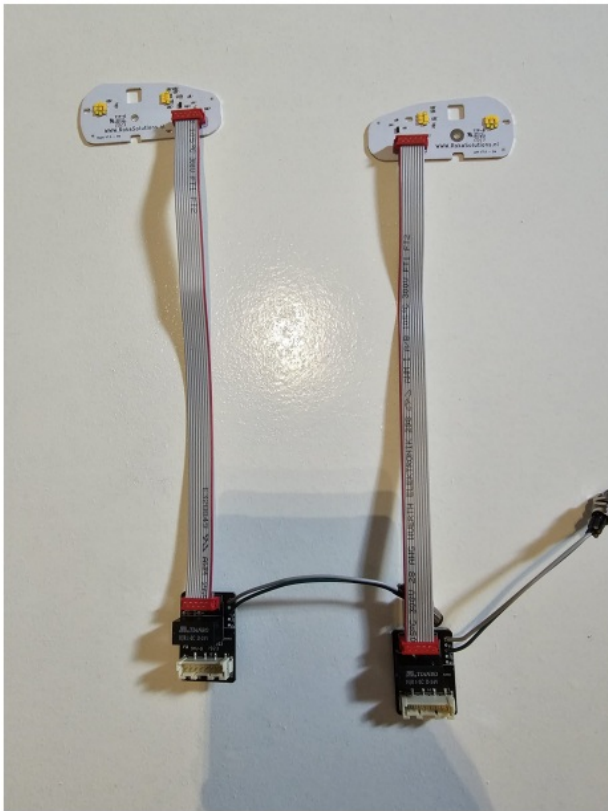
- [1 INSTRUCTIONS SWITCHABLE DRL DAF](#)
- [2 Documents / Resources](#)
  - [2.1 References](#)
- [3 Related Posts](#)

## INSTRUCTIONS SWITCHABLE DRL DAF

- Start with disassemble your headlights and the 2 units on the back.
- Replace the original DRL with the new ones with the thermal paste.
- The original connector is going to new switch board.
- And the flat cable to the DRL unit.
- Be sure you mount the flat cable in the right way!
- Make an 8mm hole to fit the connector to the outside of the headlight make sure the inside of the headlight is a flat surface.
- The 4m wire is going to the 106 switch.
- The blue cable is ground.
- The black cable is the switch wire.
- After that, you can put everything back together.



**Notice:** Plugs can only be installed this way.



## Documents / Resources

	<p><b><a href="#">GO IN STYLE DAF LED Daytime Running Lights</a></b> [pdf] Installation Guide</p> <p>DAF LED Daytime Running Lights, DAF, LED Daytime Running Lights, Daytime Running Lights, Running Lights, Lights</p>
---	--

## References

- [User Manual](#)

[Manuals+](#), [Privacy Policy](#)

This website is an independent publication and is neither affiliated with nor endorsed by any of the trademark owners. The "Bluetooth®" word mark and logos are registered trademarks owned by Bluetooth SIG, Inc. The "Wi-Fi®" word mark and logos are registered trademarks owned by the Wi-Fi Alliance. Any use of these marks on this website does not imply any affiliation with or endorsement.