

GMLighting RGBW-DMX-WC RGBW DMX Master Controller Installation Guide

[Home](#) » [GMLighting](#) » GMLighting RGBW-DMX-WC RGBW DMX Master Controller Installation Guide 

GMLighting

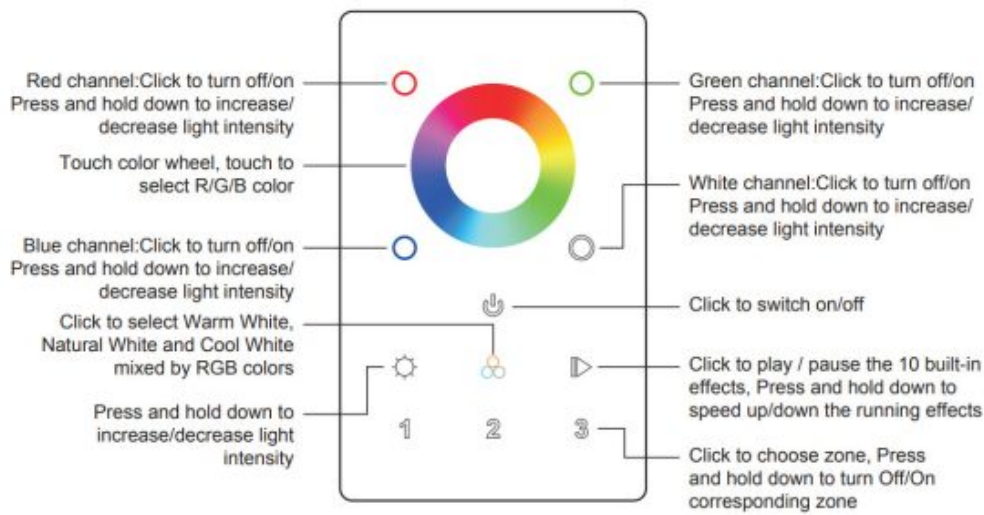
RGBW DMX MASTER CONTROLLER

Contents

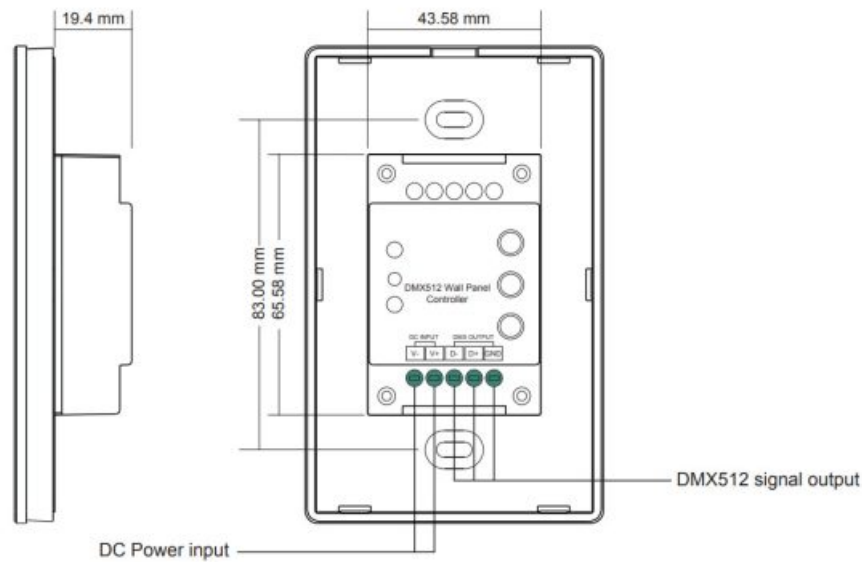
- [1 INSTALLATION GUIDE](#)
- [2 PRODUCT DATA](#)
- [3 INSTALLATION](#)
- [4 Documents / Resources](#)
 - [4.1 References](#)
- [5 Related Posts](#)

INSTALLATION GUIDE

Model: RGBW-DMX-WC



Front side



Back side

PRODUCT DATA

Output Signal	DMX512 signal
Power Supply	12-24VDC
Power consumption	< 20 mA
Operating temperature	0-40°C
Relative humidity	8% to 80%
Dimensions	75x120x29.1mm

- Touch-sensitive
- Glass interface(white & black)
- Standard DMX512 Signal output
- Control RGBW color


- Control 3 zones synchronously and separately
- Waterproof grade: IP20

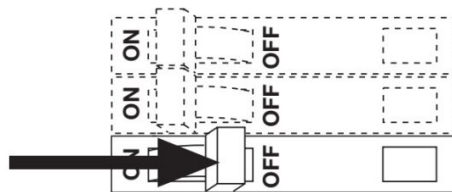
SAFETY & WARNINGS

- DO NOT install with power applied to the device.
- DO NOT expose the device to moisture.

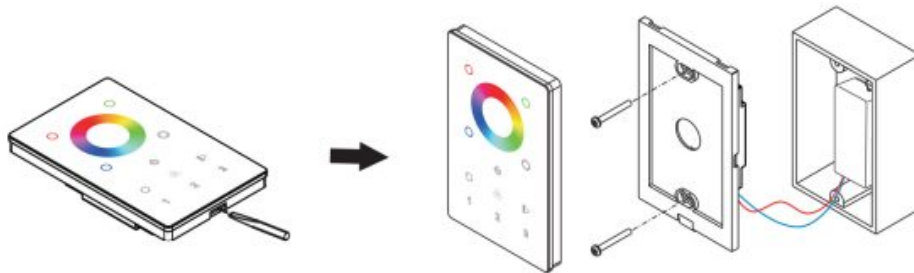
INSTALLATION

1. TURNING OFF POWER

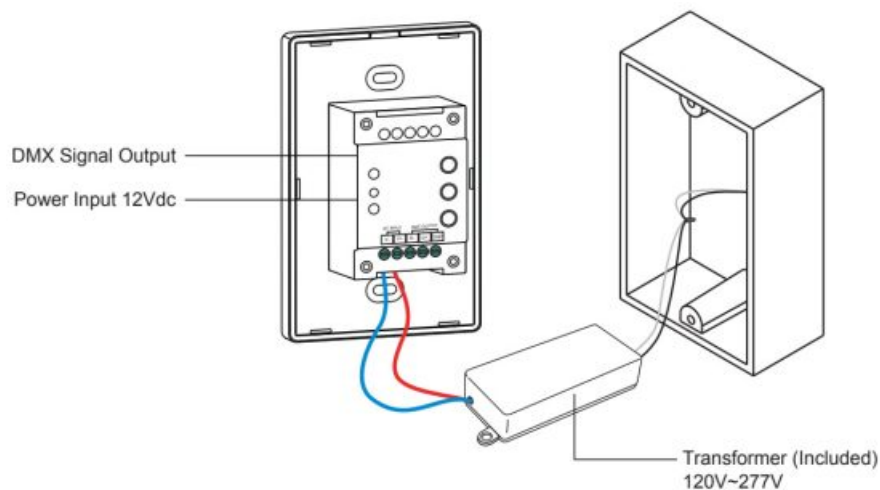
 **WARNING:** Electric Shock Hazard. May result in serious injury or death. Turn power OFF at circuit breaker prior to installation.



2. INSTALL COMPONENTS

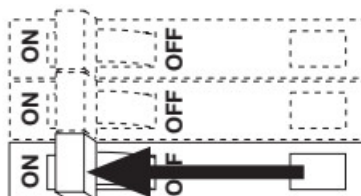


3. CONNECTOR ASSEMBLY



4. TURN POWER ON AT CIRCUIT BREAKER

Install Additional Components, Verify Connections and turn main power ON at breaker.



SYSTEM WORKING IMPROPERLY?

Turn power OFF at the circuit breaker and verify all connections. Review WIRING and TROUBLESHOOTING



©2021 GM Lighting

Specifications are subject to change without notice.

18700 Ridgeland Ave.,

Tinley Park, IL 60477

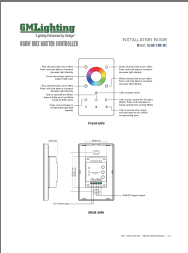
Toll-Free: (866) 671-0811

FAX: (708) 478-2640

www.gmlighting.net

tech@gmlighting.net

Documents / Resources

	<p>GMLighting RGBW-DMX-WC RGBW DMX Master Controller [pdf] Installation Guide RGBW-DMX-WC, RGBW DMX Master Controller</p>
---	---

References

- [GM GMLighting - Lighting Enhanced by Design](#)

[Manuals+](#)