



GMlighting LTR-S-COB-WP LEDTask™ Flexible LED Tape Instruction Manual

[Home](#) » [GMlighting](#) » GMlighting LTR-S-COB-WP LEDTask™ Flexible LED Tape Instruction Manual 

Contents

- [1 GMlighting LTR-S-COB-WP LEDTask™ Flexible LED Tape](#)
- [2 Before You Begin Installation](#)
- [3 Product Arrangement and Placement](#)
- [4 Preparing the Mounting Surface](#)
- [5 Documents / Resources](#)
 - [5.1 References](#)
- [6 Related Posts](#)

GMlighting®

GMlighting LTR-S-COB-WP LEDTask™ Flexible LED Tape



Before You Begin Installation

If you are viewing these instructions before purchasing product, please scan QR code at right to download our online LTR-S-COB-WP configurator. Your LTR-S-COB-WP order can be easily created and configured, and we will ship the order to you complete with connectors. All you have to do is install.

Pairing Before Mounting (When Using LUXcontrol™)

Whenever possible, it's important to be close to your WiFi source when pairing a LUXcontrol device. Fig. 1. This is true for any device that depends on a WiFi signal. Consult the pairing directions that comes with the controller, or watch our LUXcontrol pairing video.

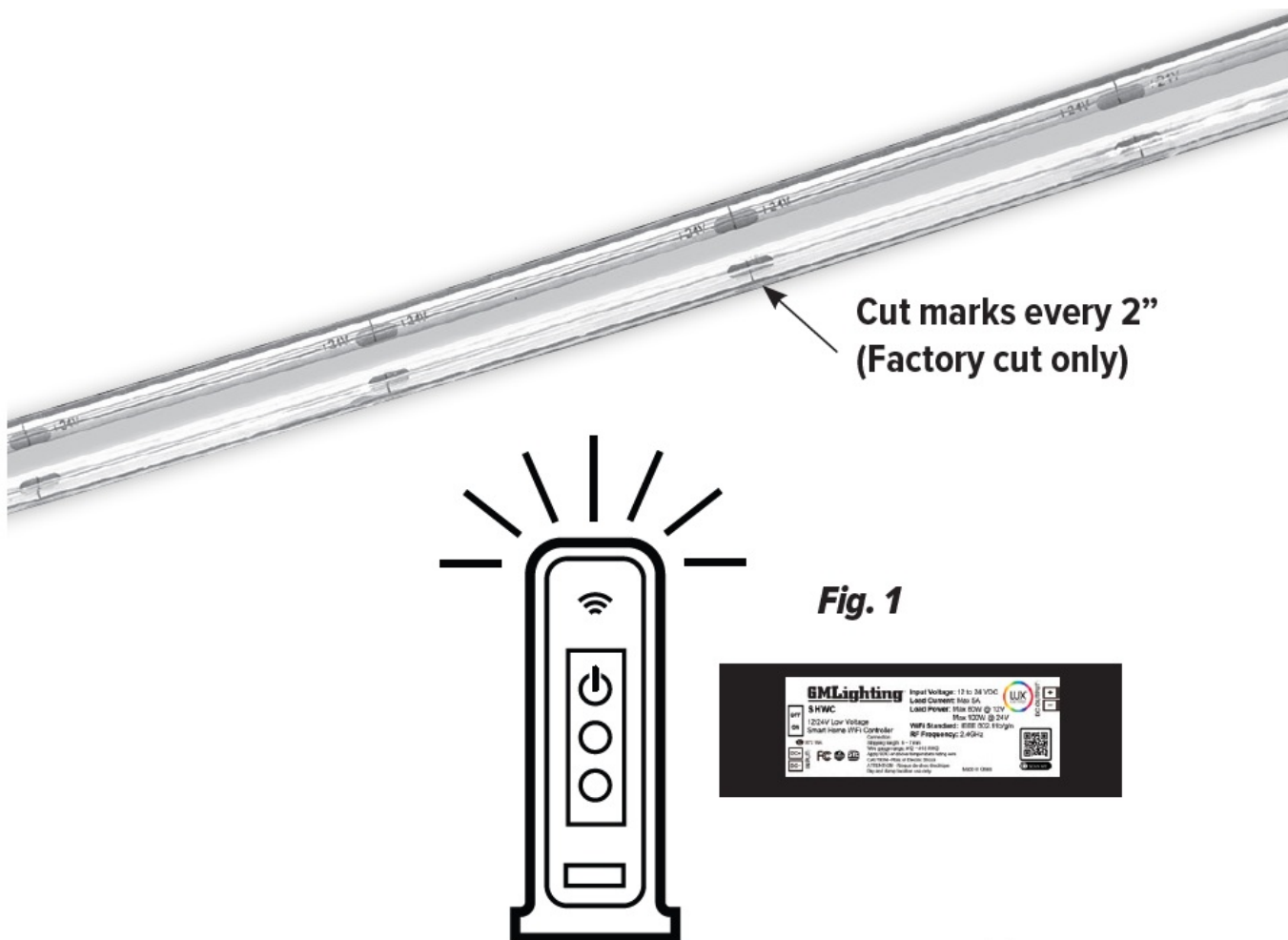
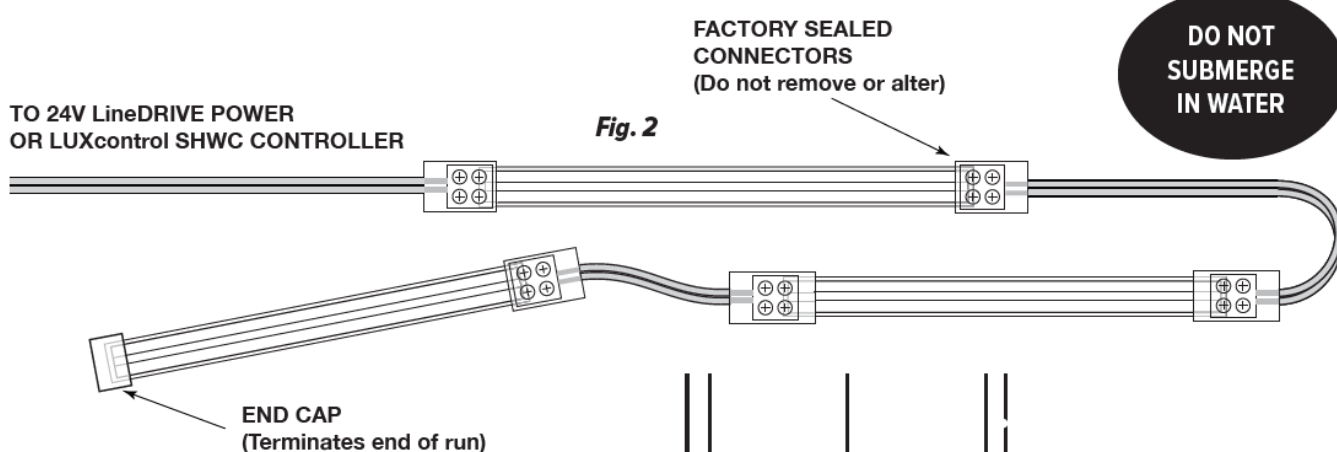


Fig. 1

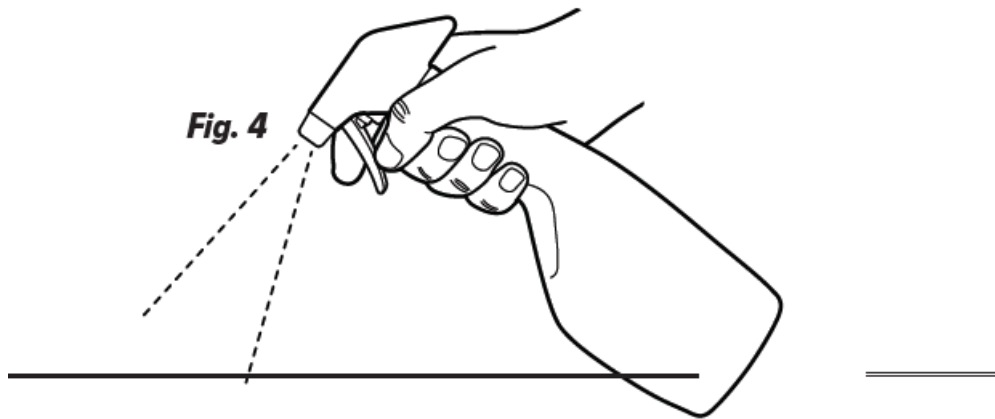
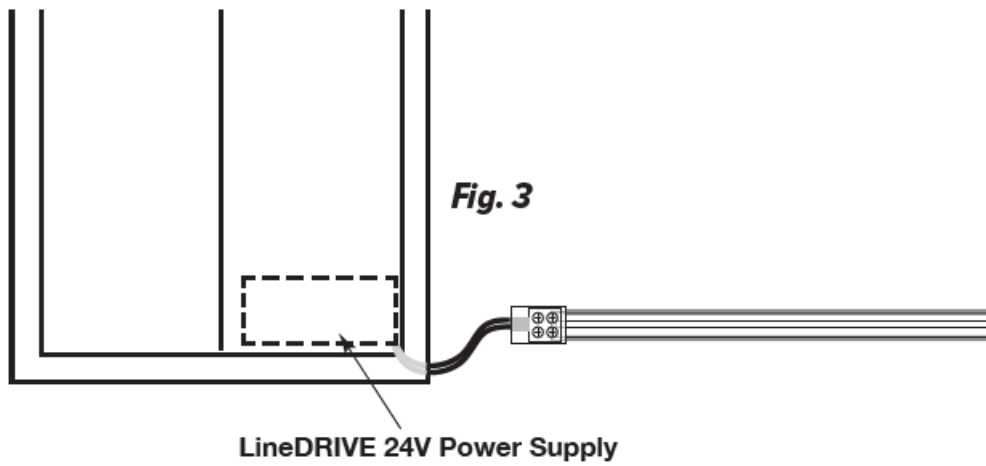
Product Arrangement and Placement

Your LTR-S-COB-WP configured layout consists of a power to tape connector, the tape and connectors that you specified when configuring your application, and an end cap to terminate your application run. Confirm that everything has been accurately cut and configured, and then begin mounting tape and connectors in place. Fig. 2. Locate LineDRIVE 24V power supply and get ready to mount power supply when tape layout is placed. If mounting outside, please check local electrical codes. NEMA housing may be required.



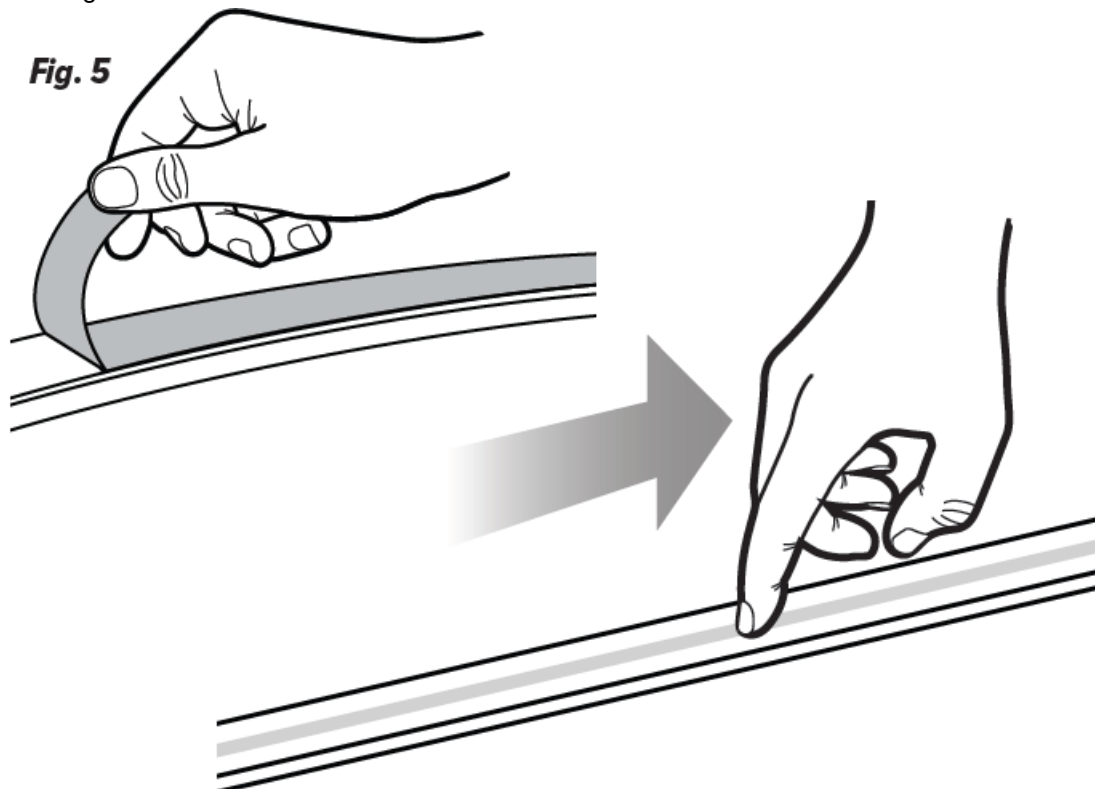
Preparing the Mounting Surface

Now that you've paired the controller, time to permanently mount your tape run. Dust will hamper adhesion. Clean all surfaces thoroughly with appropriate cleaner. Fig. 4. Wear protection, do not breathe in fumes.



Mounting With Adhesive Tape Only

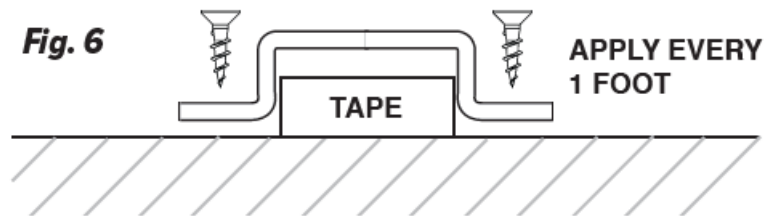
Your LTR-S-COB-WP configured layout came with enough 3M double stick tape to adhere your complete configured application to the surface. Additional tape may be ordered separately. Peel back paper covering to expose adhesive and then burnish down onto surface with finger, being careful not to press too hard against COB linear element. Fig. 5.



Using Mounting Clips

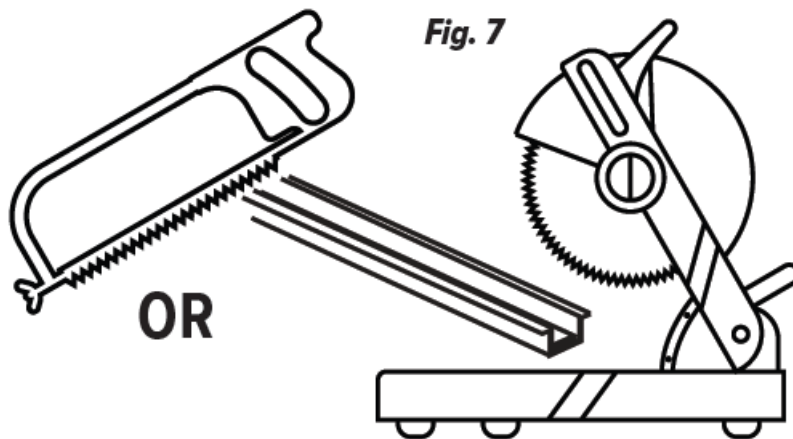
Your application may require the use of mounting clips to capture the tape along a path. Place tape in position,

and anchor with a clip by placing it over tape and screwing into mounting surface every 12". Fig. 6.

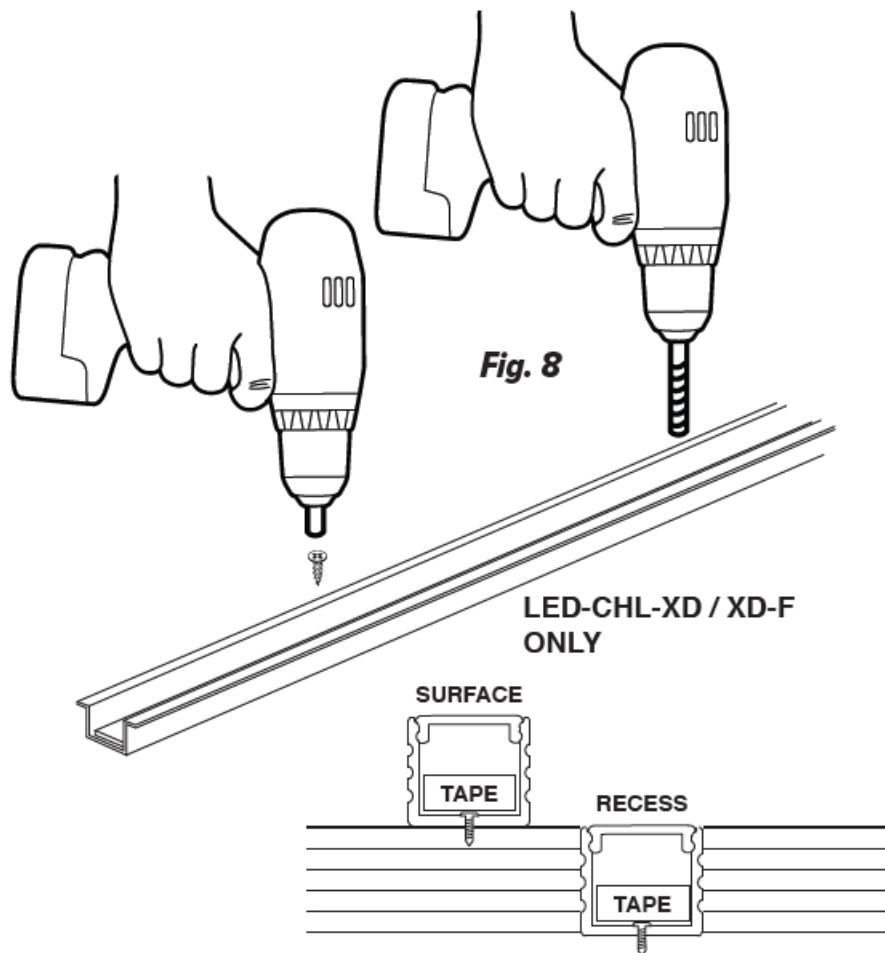


Using Mounting Channels (LED-CHL-XD only)

We offer a complete line of architectural quality aluminum extruded mounting channels and lenses in both 4' and 8' lengths. In measuring out a channel for your installation, take note that not all channels accept connectors within them. Best to make your connections outside of the channel. Cut channel using a metal blade in a circular saw or with a hacksaw. Make sure you observe all proper safety precautions and wear protective goggles. If using a hacksaw, insure that channel is tightly clamped to work bench. Fig. 7.



Mount channels using counter sunk screws (by others). Sink screw every 12" along length of channel. Fig. 8.



Lay tape in using adhesive backing to adhere tape to channel. Press firmly along length of tape. Do not apply a roller to tape as this may damage the COB linear element.

If your application calls for the use of a lens, simply snap lens into channel, working from one end to the other. Lens will seat into channel with an audible 'pop' sound.

18700 Ridgeland Ave., Tinley Park, IL 60477 Toll-Free: (866) 671-0811 • FAX: (708) 478-2640

www.gmlighting.net tech@gmlighting.net

LTR-S-COB-WPInstructions_062121

Documents / Resources

	<p>GMLighting LTR-S-COB-WP LEDTask™ Flexible LED Tape [pdf] Instruction Manual</p> <p>LTR-S-COB-WP LEDTask Flexible LED Tape, LTR-S-COB-WP, LEDTask Flexible LED Tape, Flexible LED Tape, LED Tape, Tape</p>
--	--

References

- [GM GM Lighting - Lighting Enhanced by Design](#)