



GlucoRx Voyager Software User Guide

[Home](#) » [GlucoRx](#) » GlucoRx Voyager Software User Guide 



Voyager Software User Guide



Contents

- [1 Voyager Software](#)
- [2 Documents / Resources](#)
 - [2.1 References](#)

Voyager Software

How to set up GlucoRx Voyager for Windows

1. Navigate to <https://www.glucorx.co.uk/our-services/software/> and select the Voyager Download



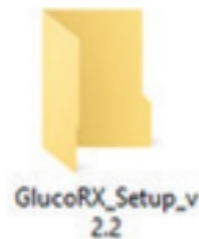
2. The download will start, progress will display in the bottom left corner of your browser.



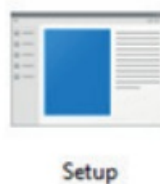
3. Double left click the Gluco_Setup zip file.



4. Double left click the Gluco_Setup file.

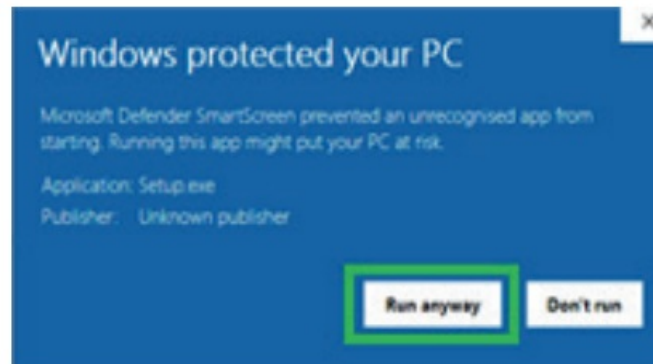
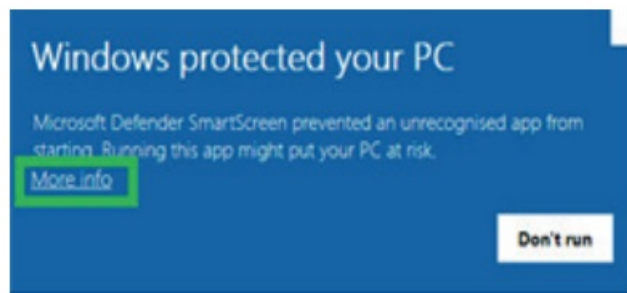


5. To start the installation, double left click the "Setup" file.

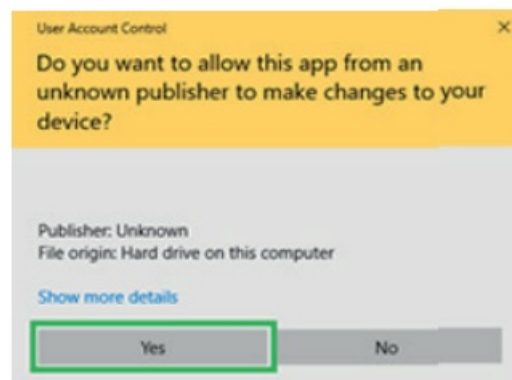


6. PLEASE NOTE

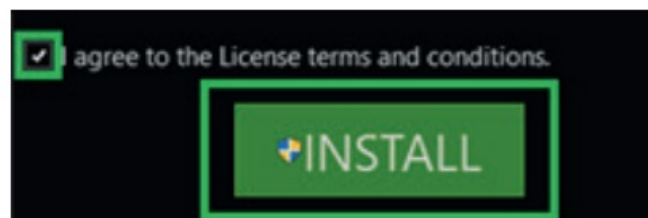
If you see this pop up, click "More Info" then click "Run anyway"



7. If this message shows, select “Ye s”.



8. Tick the “I agree to the License terms and conditions”. Select “Install”.



How to import readings from USB Meters to Voyager for Windows

1. Navigate to <https://www.glucorx.co.uk/ourservices/software/> and select the Voyager Download button.

CREATE ACCOUNT

First Name*

Last Name*

☐ Male ☒ Female

Select a date 15

Email*

Password*

Confirm Password*

Thank you for signing up for GlucoRX. Please click on the following button to verify your email and get started.




Best Regards,
GlucoRX Support Team

- To login, Input your email address and password.

Welcome To GlucoRx

Login



Email / User ID

Password

[Forgot Password?](#)

SUBMIT

[Create Account](#)

- The user is prompted to input their Low and high blood glucose limits. This is personal to each person. If you are unsure what your limits are you should speak with your healthcare professional. (This is only required on the user's first login)

Thresholds	
Units of Measure	mmol
Low Limit	4.1
High Limit	9.5
High Alarm	10.5
Low Alarm	3.5

- Plug your meter into the computer using a USB cable.
- When "USB or PC" is displayed on the screen, select the meter name from the devices dropdown and select "Connect".
If this is the first time you have connected your meter it may fail to connect. It is recommended you restart your computer if a failure to connect occurs.
- New readings will automatically be imported.
- The GlucoRx Voyager portal will open in a web browser.



8. To log into the portal without importing any results, open GlucoRx.exe and click the “visit Portal” button. You can also login from any web browser by going to www.grxvoyager.com



Documents / Resources



[GlucoRx Voyager Software](#) [pdf] User Guide
Voyager Software, Voyager, Software

References

- [GRX Voyager – Health in your Hands – Telehealth GRX Voyager](#)
- [Rx Our Products | Diabetes Test | GlucoRx](#)