



## Glorious Core (BETA) USER GUIDE

[Home](#) » [GLORIOUS](#) » Glorious Core (BETA) USER GUIDE 



### Contents

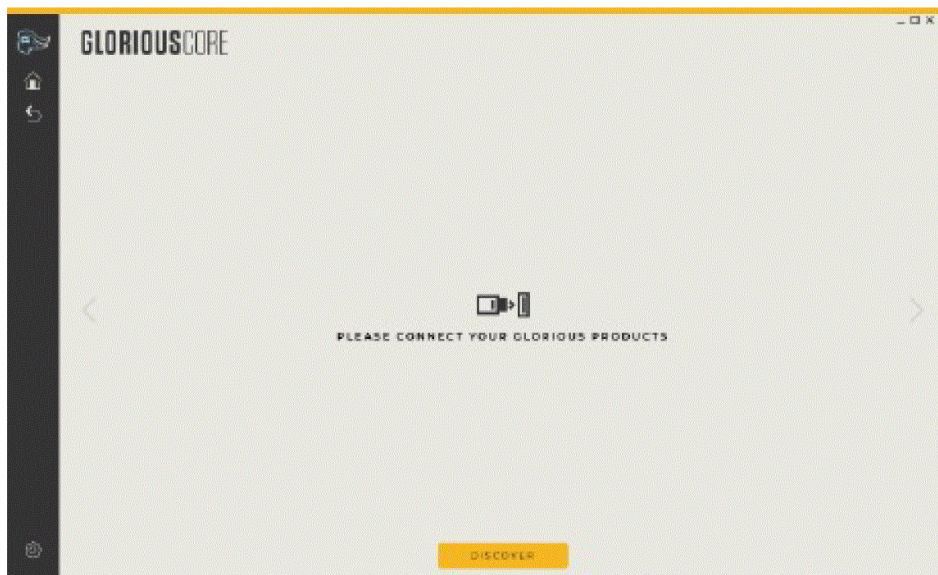
- [1 Glorious Core \(BETA\) USER GUIDE](#)
- [2 CONNECTING YOUR GMMK PRO TO CORE](#)
- [3 PROFILES & LAYERS](#)
- [4 LIGHTING](#)
- [5 PERFORMANCE](#)
- [6 SETTINGS & UPDATES](#)
- [7 Glorious Core \(BETA\) USER GUIDE](#)
- [8 Related Posts](#)

## Glorious Core (BETA) USER GUIDE



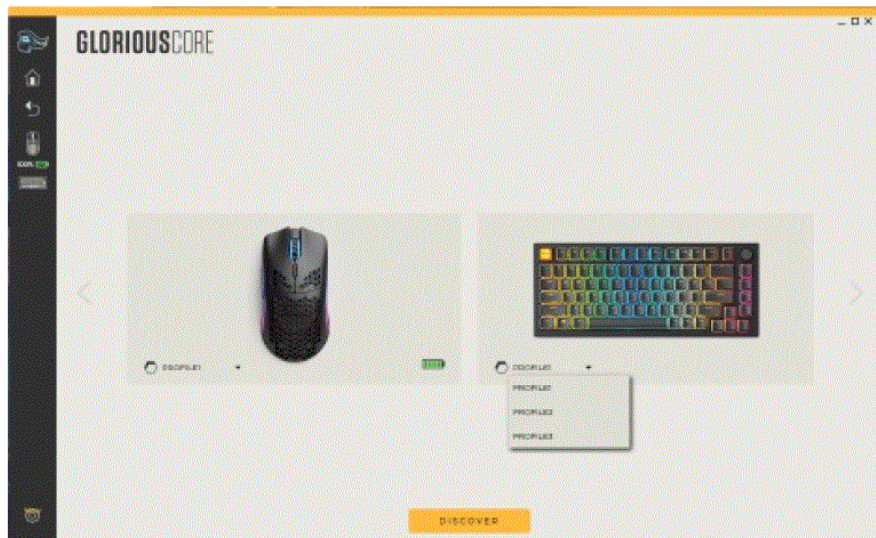
### CONNECTING YOUR GMMK PRO TO CORE

Upon launching CORE, you will see this screen. It may take a few minutes for your GMMK PRO to register with CORE. (You do not need to select the “DISCOVER” button.)

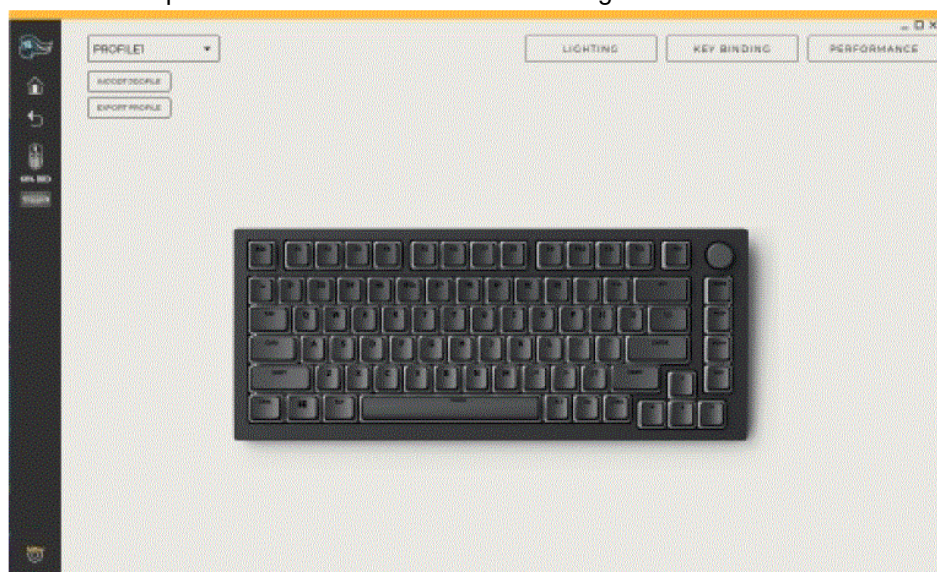


Once your Glorious products are detected by CORE, they will show on the “home” page. You can get back to this view at any time by selecting the Home icon.





You can toggle which custom profile your PRO is currently using from the home screen. You can select the GMMK PRO icon in the sidebar or the picture of the PRO in the window to go to the GMMK PRO customization screen.



## PROFILES & LAYERS

On the customization screen, you can export profiles for your GMMK PRO and import up to three different profiles at a time. Profiles consist of three layers that you can apply custom RGB effects to and create key binds on. You can cycle through profiles or layers without opening CORE by using built-in hotkeys.

- **Cycle Profiles Up**

FN + CTRL + [+]

- **Cycle Layers Up**

FN + CTRL + ALT + [+]

- **Cycle Profiles Down**

FN + CTRL + [≤]

- **Cycle Layers Down**

FN + CTRL + ALT + [<1]

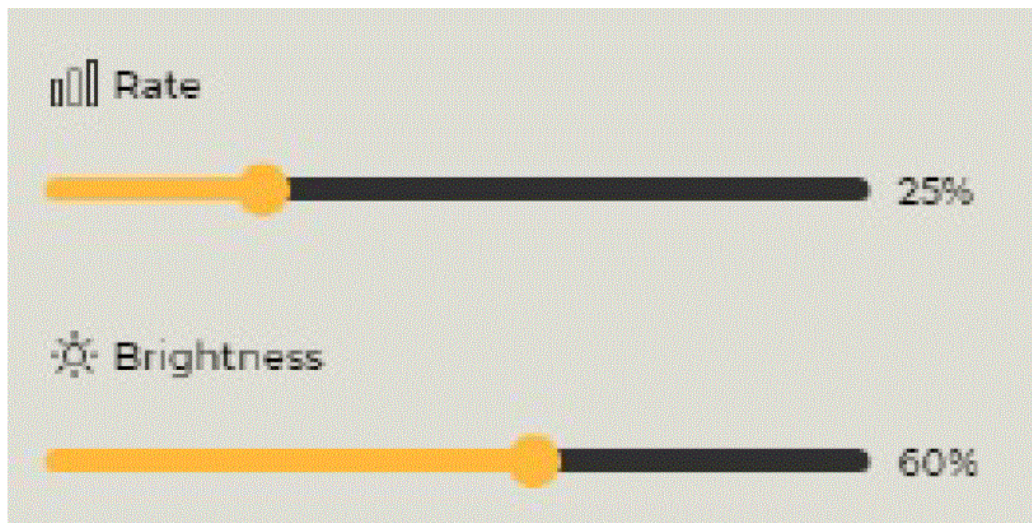
We recommend exporting your selected profile before updating CORE or your GMMK PRO firmware in the case that an update resets your GMMK PRO settings. You can restore your customizations by importing the profile following an update.



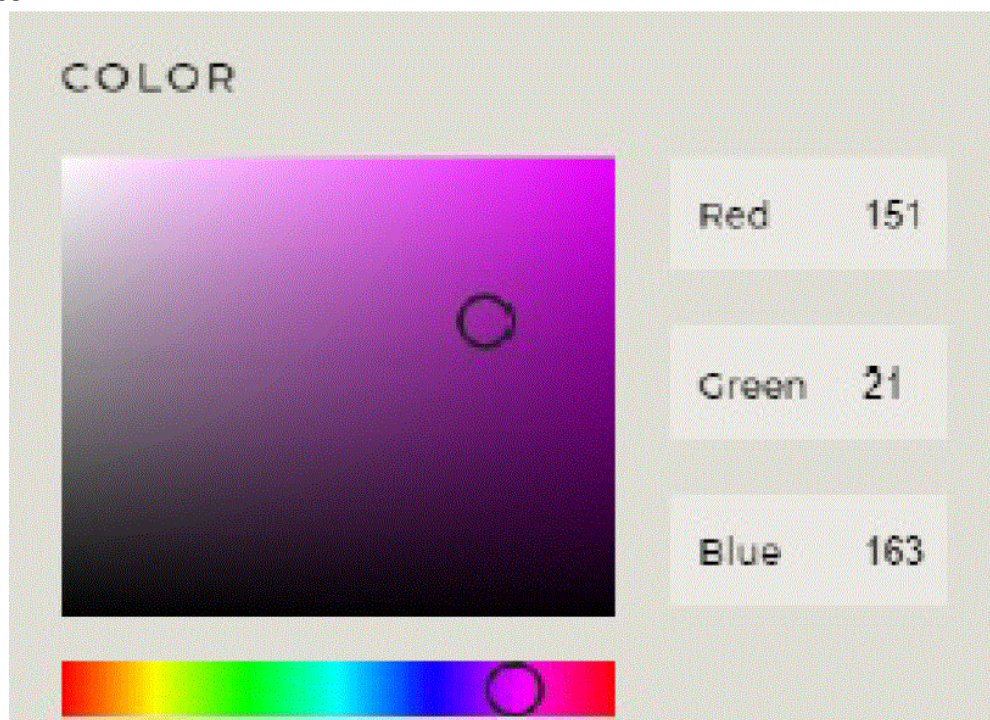
## LIGHTING

### Presets

The GMMK PRO has 18 preset lighting effects that can be selected from the Effect drop-down, as well as an option to turn the LEDs off. Brightness and Rate (speed) can be adjusted for most effects using the slider bars in 5% increments.



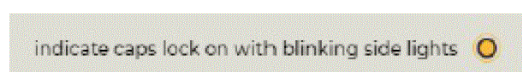
A custom color can be used with some effects by moving the circles on the color palette or by entering GB values in the text boxes.



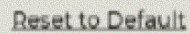
RGB(Fixed) can be applied to some effects by selecting the toggle.



By default, the sidelights will breathe when Caps Lock is on. This can be disabled by turning off “Indicate caps lock on with blinking side lights.”



Effects or changes will not be applied to your GMMK PRO until you select the “Save” button.



The Reset to Default button in this panel will restore the LEDs to Glorious Mode at 100% brightness, but will not overwrite any Per Key effects applied.

### Per Key

Per Key lighting applies on top of whatever Preset is selected. So, if you apply per key lighting to one key, the preset lighting will remain applied to the other keys. However, selecting “All” in the Quick Key Selection will override the preset effect. You can select a single key or a group of keys from Quick Key Selection, adjust the color and brightness, and/or toggle Breathing on or off. Then hit Save

You can remove the Per Key effect from a single key or group of keys from Quick Key Selection by selecting the eraser tool and then clicking the desired key or key selection button and hitting Save. (Don’t forget to click the Pencil again to go back to editing.)



You can default to whichever preset you had selected at any time by selecting the “Reset to Default” option to clear your per key lighting. Reset to Default is independent on each of the Presets and Per Key panels. Selecting Reset to Default on the Per Key panel will remove Per key lighting but not override the selected preset effect.

### KEY BINDING

Select a key from the GMMK PRO on the screen, select your key binding, and then hit Save.

#### Single Key / Combo Key

Bind the selected key to another key or a modifier + key.

#### Keyboard Function

Bind the selected key to cycle profiles or layers up or down.

#### Mouse Function

Bind the selected key to a mouse button or function (like scroll up)

#### Macro

Bind a macro function to the selected key.

Select “New Macro” and then Name Your Macro. Select your type of macro from the drop down.

**No Repeat:** The macro will execute once upon key press.

**Toggle:** The macro will execute upon key press until the key is pressed again. Repeat While holding: The macro will execute upon key press until the key is released.



Select Record, then Start Record when you're ready to press the desired macro buttons. Hit Stop Record when you're done.



You can drag key presses closer together or farther apart on the timeline or shorten/lengthen individual button presses.



Be sure to hit Save to apply your macro. You can also export, import, and delete macros.

## Multimedia

Bind the selected key to a media function such as opening the media player, play/pause, or next track.

## Shortcuts

Bind the selected key to launch a program, a website, or a Windows application.

## Disable

Disable the selected key.

## PERFORMANCE

In the performance tab, you can change the polling rate of your GMMK PRO to 125Hz, 250Hz, or 500Hz from the default 1000Hz. Polling Rate is how often the OS checks for input from the GMMK PRO. This is a factor in determining the maximum input latency of key presses. A high polling rate takes up more CPU resources than lower polling rates.

## SETTINGS & UPDATES

The settings panel for Glorious CORE can be accessed by selecting the gear icon from the sidebar. From this screen, you can manage your preferences for whether CORE launches on computer startup and how long your

devices will stay on if they're inactive.

From this screen, you can update CORE software or your GMMK PRO firmware. Clicking "Check for Updates" will let you know if any updates are available. You should update your GMMK PRO firmware upon plugging it in for the first time.

## **Glorious Core (BETA) USER GUIDE**

**Download PDF:** [Glorious Core \(BETA\) USER GUIDE](#)

[Manuals+](#).