



13064 SOPHIE PLUG-IN
WALL SCONCE

Globe 13064 Sophie Plug-in Wall Sconce Instruction Manual

[Home](#) » [globe](#) » Globe 13064 Sophie Plug-in Wall Sconce Instruction Manual 

Contents

- 1 Globe 13064 Sophie Plug-in Wall Sconce
- 2 ELECTRICAL INSTALLATION
- 3 INSTALLATION
- 4 FREQUENTLY ASKED QUESTIONS
- 5 References



Globe 13064 Sophie Plug-in Wall Sconce



Thank you for selecting Globe as your lighting choice for your home. With proper care, this product will provide years of pleasure and enjoyment. Carefully follow the instructions in order to ensure that this product functions safely and properly for years to come.

WALL SCONCE

FOR YOUR SAFETY:



Most electrical accidents are caused by carelessness or ignorance. If you combine a basic knowledge of electricity, a healthy respect for it, and a dose of common sense, you can safely tackle many household electrical repairs. Here are some basic guidelines for working with electricity:

- Before working on a circuit, go to the main service panel and remove the fuse or trip the breaker that controls that circuit. Tape a sign to the panel warning others to leave the circuit alone while you work.
- Before touching any wire, use a voltage tester to make sure it's not live.
- Whenever you check for voltage in a receptacle, check both outlets – each may be controlled by a separate wiring circuit.
- When replacing fuses, turn off the main power first. Make sure your hands and feet are dry, and place one hand

behind your back to prevent electricity from making a complete circuit through your chest. Touch a plug fuse only by its insulated rim. Remove cartridge fuses with a fuse puller.

- Use tools with insulated handles and ladders made of wood or fibreglass.
- To protect children, place safety covers over any unused outlets.
- When unplugging a power tool or appliance, pull on the plug, not on the power cord.
- Improperly used extension cords are a leading cause of electrical fires. They are for temporary use only – do not use them to extend a circuit permanently.
- Keep dry-chemical fire extinguishers in the kitchen, basement, and workshop.
- Never disable grounding devices. Make sure that all appliances requiring grounding are properly grounded, and that the electrical system itself is properly grounded.
- Meet or exceed all electrical code requirements that cover the work you are doing.
- Always work with enough light to see what you are doing; it's easy to make mistakes when you're working in dim light.
- When in doubt about the safety of any electrical repair or test, call in a professional.

CONSULT A QUALIFIED ELECTRICIAN TO ENSURE THE CORRECT BRANCH CIRCUIT CONDUCTOR.

Since 1932, Globe has taken pride in offering products of the highest quality, and a level of service unparalleled in the industry. Should you encounter any difficulties, have any questions or simply wish to offer us your valuable feedback, you may contact us in the following ways:

Toll Free Telephone: 1-[888-543-1388](tel:888-543-1388) (North America Only)

Toll Free Fax: 1-[800-668-4562](tel:800-668-4562) (North America Only)

E-Mail: info@globe-electric.com

Mail: Globe Electric Customer Service Department 150 Oneida, Montreal, Quebec, Canada H9R 1A8 Please visit our website to discover other quality Globe products: <http://www.globe-electric.com>

ELECTRICAL INSTALLATION

- **FIG. 1.** Place the wall switch in the “OFF” position. Depending on which type of fuse box you have in your home:
- **FIG. 2.** Place either the main (Master) switch in the “Off” position, cutting off power to your entire home OR turn off the individual switch that provides power to where the fixture will be installed. OR
- **FIG. 3.** Place either the main (Master) switch in the “OFF” position, cutting off power to the entire home OR unscrew the fuse that provides power to where the fixture will be installed.

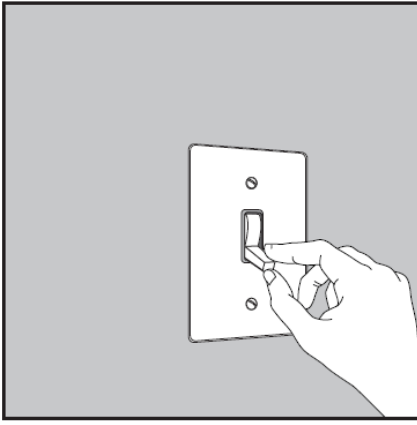


FIG. 1
WALL SWITCH

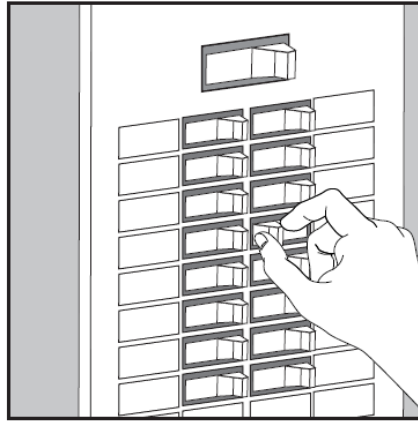


FIG. 2
BREAKER PANEL

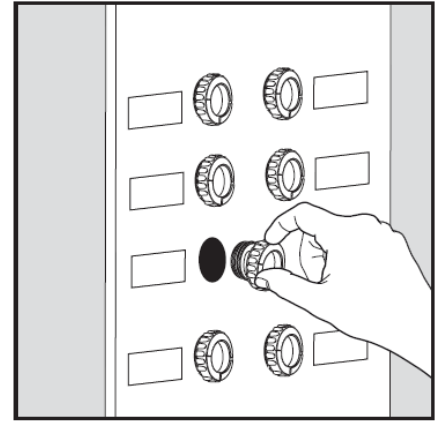


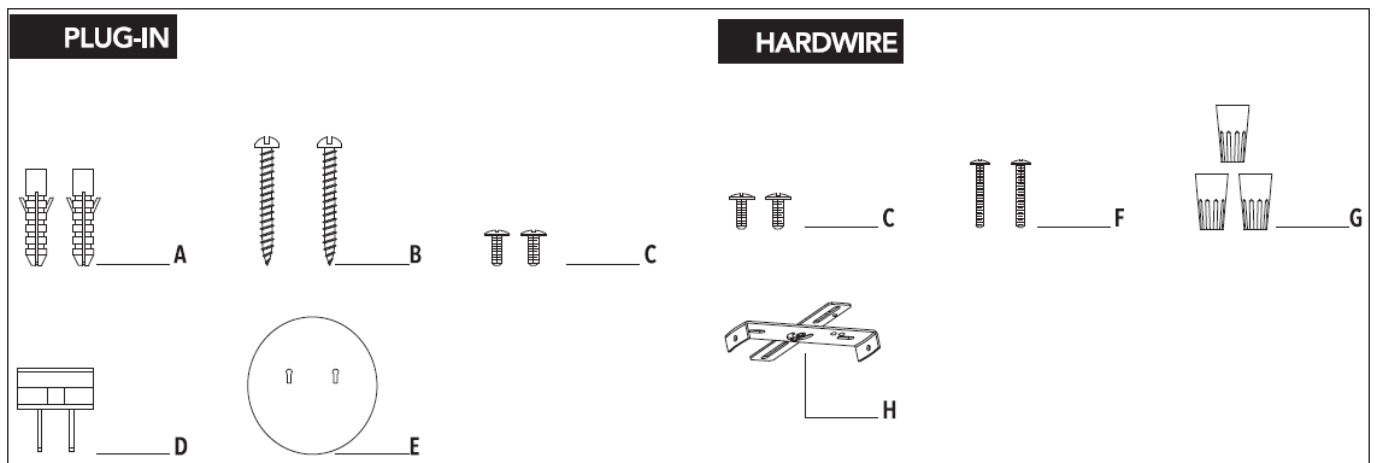
FIG. 3
FUSE BOX

NOTE: Shutting off a wall switch that controls the light is not sufficient to prevent electrical shock.

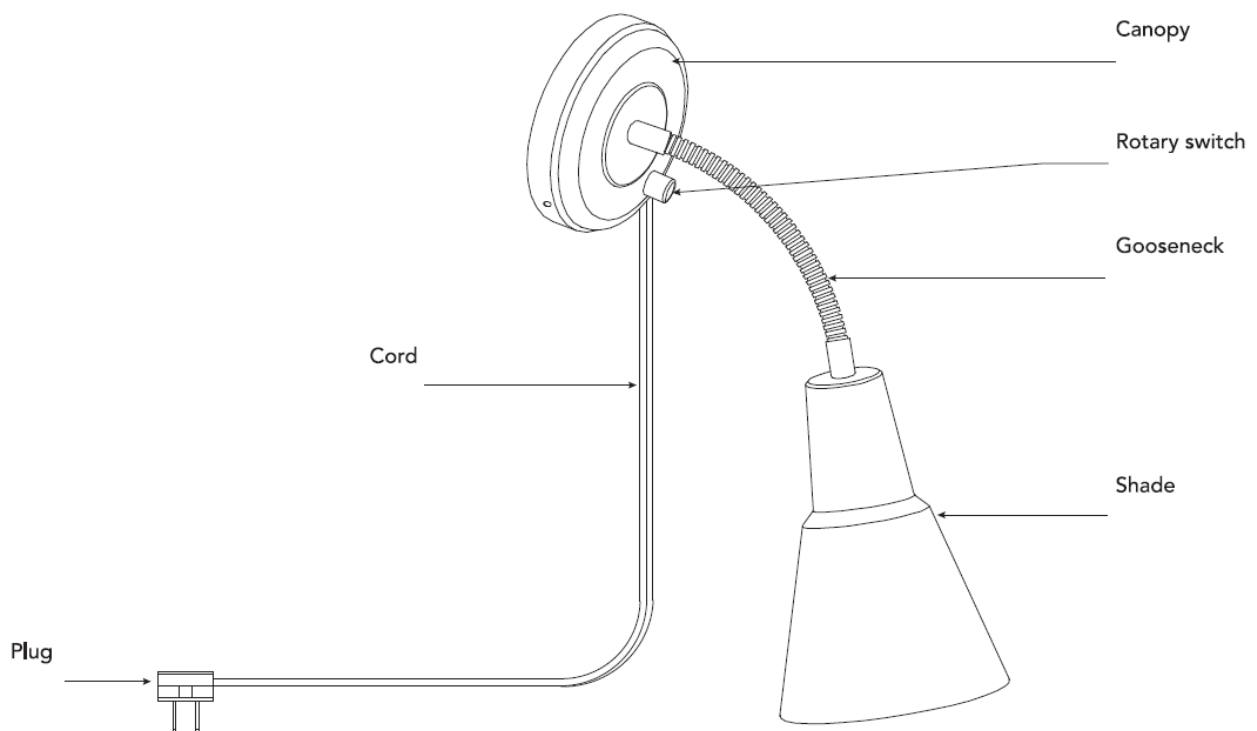
HARDWARE INCLUDED

NOTE: Hardware not shown to actual size.

PART	DESCRIPTION	QUANTITY
A	Wall anchor	2
B	Mounting wall screw	2
C	Backplate/mounting bracket screw	2
D	Plug	1
E	Back plate	1
F	Outlet box screw Vis de soutien	2
G	Wire connectors	3
H	Mounting bracket Support	1



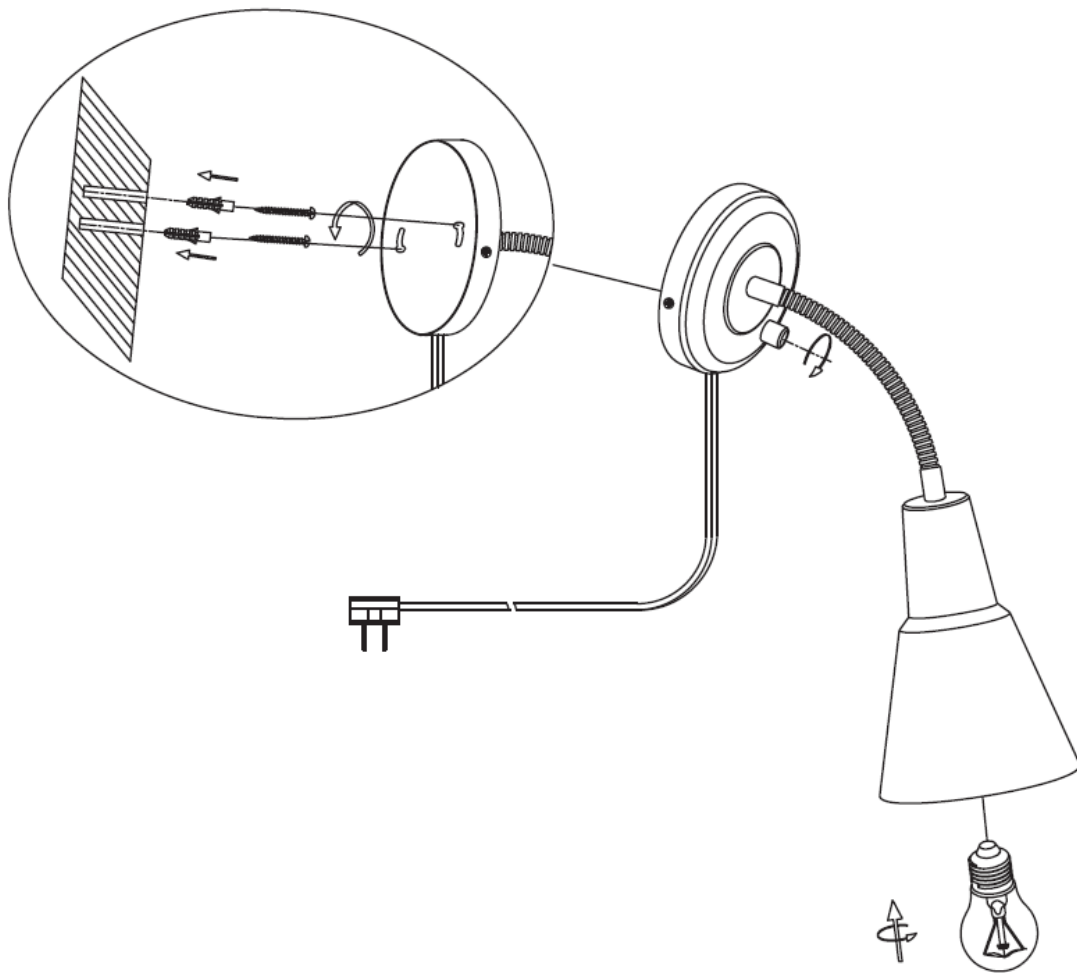
PACKAGE CONTENTS



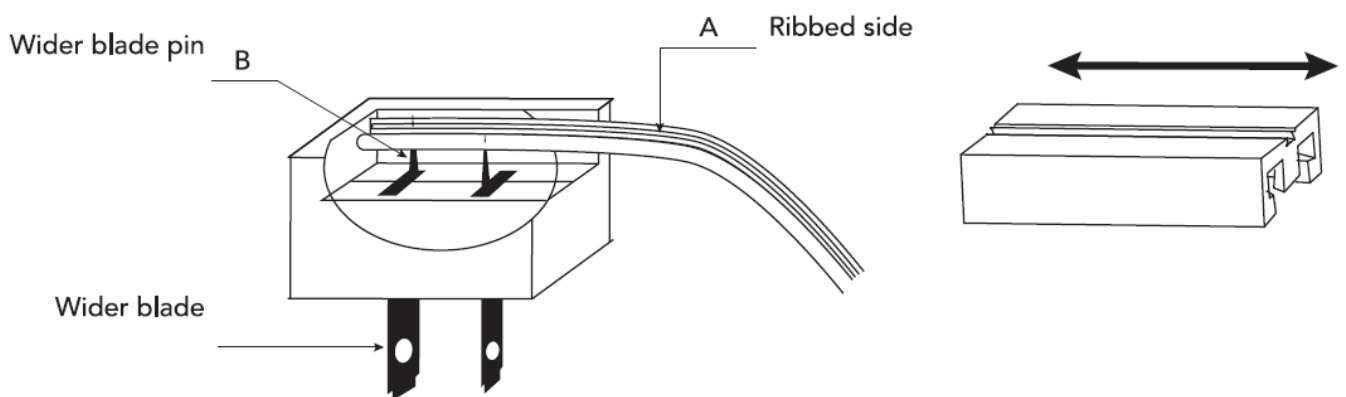
INSTALLATION

PLUG-IN INSTALLATION

- MOUNTING THE CANOPY** Unscrew the back plate from the canopy. Place the back plate on the wall. Mark the location for the anchors. Use a drill to make the holes. Insert the anchors into the wall. Secure the back plate onto the wall by screwing the mounting screws into the anchors. Secure the fixture onto a back plate with back plate screws.

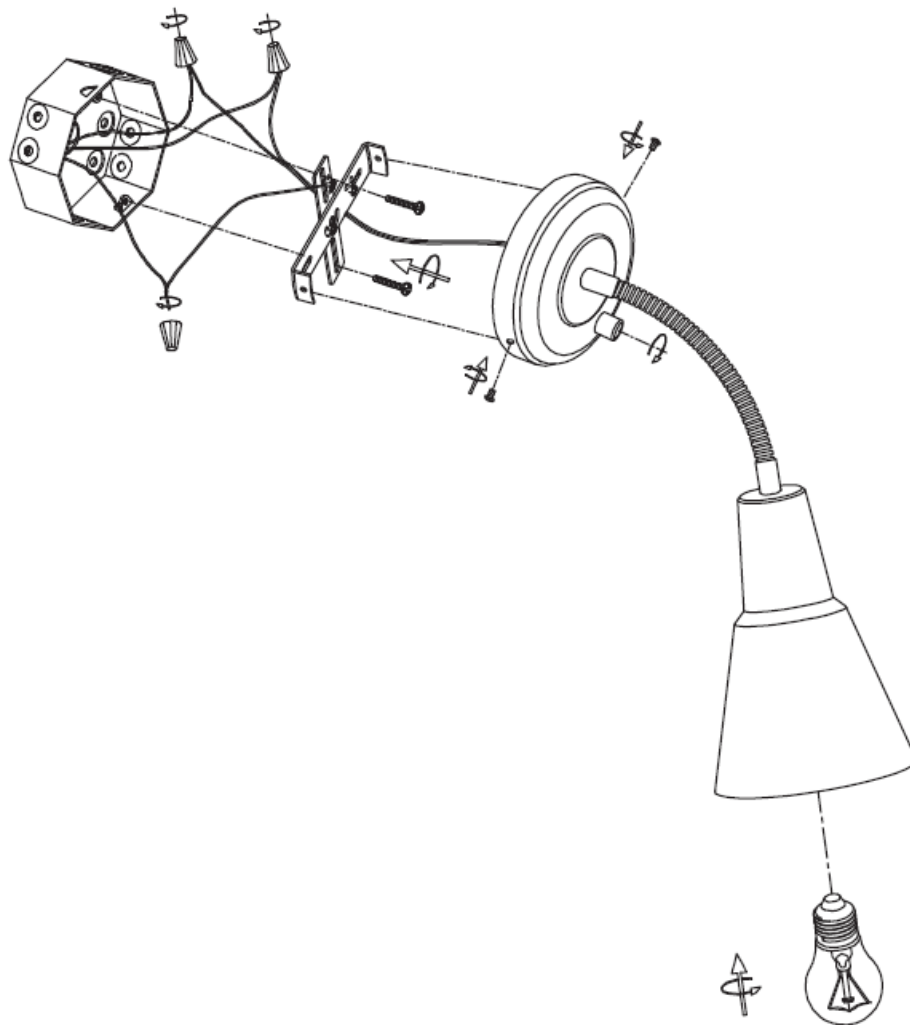


- **ADJUST CORD LENGTH (OPTIONAL)** The cord length between the plug and the canopy should be at least 5ft (152.4cm). Slide the plug cap off of the cord plug as shown in image below. Cut the cord to desired length. Re-attach cord to cord plug by inserting the cord back into the cord plug and pressing it down firmly. Secure the cord by sliding the plug cap back onto the cord plug.



Consult a qualified licensed electrician to ensure all wires connect to the correct polarity.

HARDWIRE INSTALLATION



REMOVE THE CORD

- Remove the back plate by unscrewing the back plate screws. Unwire the black and white wire from the cord (making sure to keep the rotary switch black wire connected/intact). Slide cord out through the hole and remove.

INSTALL MOUNTING BRACKET

- Install mounting bracket to inside of canopy by securing with mounting bracket screws (also known as back plate screw).

CONNECTING THE WIRES

- The cord length between the wire connectors and the canopy should be at least 6" (152.4mm)
- If needed, strip plastic coating from the white and black wire approximately 1" (2.5 cm) to expose the metal wire inside.
- Wrap the ground wire from the mounting crossbar around the ground screw on the outlet box. Use a wire connector to connect the ground wire from the fixture to the ground wire from the outlet box.
- Use a wire connector to connect the white wire from the fixture to the white wire (neutral wire) from the outlet box.

- Use a wire connector to connect the black wire from the fixture to the black wire (live wire) from the outlet box.
- Wrap the three wire connections with electrical tape for a more secure connection.
- Position the wires back inside the outlet box.

ATTACHING THE CANOPY

- Position the canopy over the outlet box and secure it with outlet box screws.

Requires 1 x medium screw base, type A, 60-watt maximum bulb (sold separately)

WARNING: consult a qualified licensed electrician who will ensure the fixture is installed in accordance with local installation codes.

FREQUENTLY ASKED QUESTIONS

What are the dimensions of the Globe Electric 13064 Sophie Plug-in Wall Sconce?

The Globe Electric 13064 Sophie Plug-in Wall Sconce has dimensions of 5 inches in length, 5 inches in width, and 15.55 inches in height, making it a compact yet impactful light fixture for any room.

How much does the Globe Electric 13064 Sophie Plug-in Wall Sconce weigh?

The Globe Electric 13064 Sophie Plug-in Wall Sconce weighs 16 ounces, making it light and easy to install while still offering durability and style.

How is the Globe Electric 13064 Sophie Plug-in Wall Sconce controlled?

The Globe Electric 13064 Sophie Plug-in Wall Sconce is controlled via an app, allowing users to conveniently adjust the lighting from their smartphone or tablet, if compatible.

What is the voltage requirement for the Globe Electric 13064 Sophie Plug-in Wall Sconce?

The Globe Electric 13064 Sophie Plug-in Wall Sconce operates at 120 volts, the standard voltage for most residential lighting systems in North America.

What wattage does the Globe Electric 13064 Sophie Plug-in Wall Sconce support?

The Globe Electric 13064 Sophie Plug-in Wall Sconce supports 60 watts, providing a moderate level of brightness suitable for mood lighting or accent lighting in rooms like the bedroom or living room.

What type of switch does the Globe Electric 13064 Sophie Plug-in Wall Sconce use?

The Globe Electric 13064 Sophie Plug-in Wall Sconce features a push button switch, allowing for simple on and off control.

How large is the Globe Electric 13064 Sophie Plug-in Wall Sconce?

The Globe Electric 13064 Sophie Plug-in Wall Sconce is compact in size, measuring 5 x 5 x 15.55 inches, allowing it to fit well into smaller or tighter spaces while still providing ample lighting.

When was the Globe Electric 13064 Sophie Plug-in Wall Sconce first available?

The Globe Electric 13064 Sophie Plug-in Wall Sconce was first available on October 16, 2018, providing a stylish and contemporary lighting option for homes and businesses.

DOWNLOAD THE PDF LINK: [Globe 13064 Sophie Plug-in Wall Sconce Instruction Manual](#)

REFERENCE: [Globe 13064 Sophie Plug-in Wall Sconce Instruction Manual-Device.Report](#)

References

- [User Manual](#)

[Manuals+](#), [Privacy Policy](#)

This website is an independent publication and is neither affiliated with nor endorsed by any of the trademark owners. The "Bluetooth®" word mark and logos are registered trademarks owned by Bluetooth SIG, Inc. The "Wi-Fi®" word mark and logos are registered trademarks owned by the Wi-Fi Alliance. Any use of these marks on this website does not imply any affiliation with or endorsement.