



Global Synthetics GS_015 Pro Grid PP Geo Composite Geogrid Instruction Manual

[Home](#) » [Global Synthetics](#) » Global Synthetics GS_015 Pro Grid PP Geo Composite Geogrid Instruction Manual



Global Synthetics GS_015 Pro Grid PP Geo Composite Geogrid Instruction Manual



Contents

- [1 Biaxial soil reinforcement, stabilization & separation recomposite](#)
- [2 Product Information](#)
- [3 Applications](#)
- [4 ProGrid® Polypropylene \(PP\) Geocomposite](#)
- [5 Benefits and Features](#)
- [6 About Us](#)
- [7 Documents / Resources](#)
 - [7.1 References](#)
- [8 Related Posts](#)

Biaxial soil reinforcement, stabilization & separation recomposite



Product Information

ProGrid® PP Reinforcement Geocomposite is formed by punching holes and stretching a stiff polypropylene sheet to form a geogrid with uniform openings which then has a polyester (PET) nonwoven geotextile heat bonded to one side.

ProGrid® PP Reinforcement Geocomposite provide stiff, high modulus reinforcement with the added benefit of separation and filtration. These features combine to allow the construction of roads and other amenities over weak, low bearing subgrades.

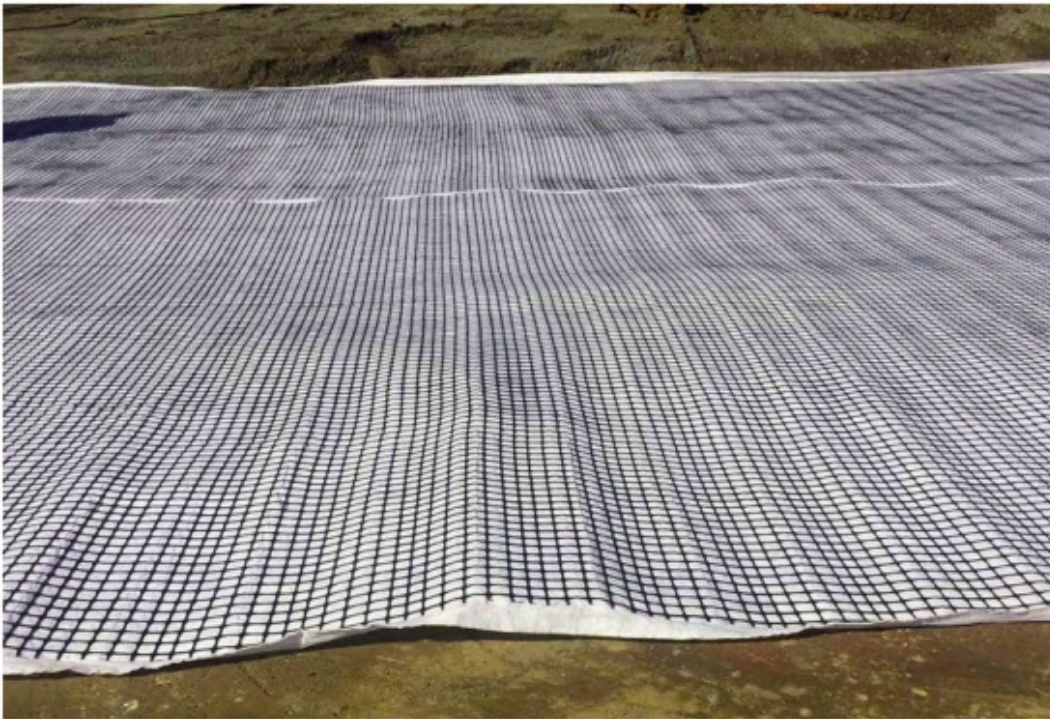
Applications

- Base, sub-base stabilisation and reinforcement
- Subgrade / soil stabilisation and reinforcement
- Raft reinforcement construction
- Road, railway and airport pavements
- Suitable for placement directly on subgrade due to separation benefits of the attached geotextile

ProGrid® Polypropylene (PP) Geocomposite

Benefits and Features

- Reinforcement/stabilisation, separation, filtration and drainage combined. Making installation easier and faster in a single operation to provide significant cost and time savings
- Increases lateral confinement of unbound & modified gravel material layers
- Improves soil/subgrade bearing capacity
- Helps control expansive soil/subgrade movements and associated longitudinal cracks in sealed road pavements
- Robust against installation damage, and chemical and biological attack



Product Data Sheet

Product Grade

Geogrid Properties	Test Method	Units	20/20	30/30	40/40
Ultimate Tensile Strength (MD /CD)	ASTM D4595 or EN ISO 10319 / ASTM D6637	kN/m	20/20	30/30	40/40
Strain @ Ultimate Strength (MD/CD)	ASTM D4595 or ISO 10319 / ASTM D6637	%EN	13/13	13/13	13/13
Tensile Strength @ 2% Strain (MD/CD)	ASTM D4595 or EN ISO 10319 / ASTM D6637	kN/m	7/7	11/11	14/14
Tensile Strength @ 5% Strain (MD/CD)	ASTM D4595 or EN ISO 10319 / ASTM D6637	kN/m	14/14	22/22	28/28
Junction Efficiency (MD/CD)	ASTM D7737/D7737M-15	%	100/100	100/100	100/100
Aperture Size (MD/CD)	mm		38/43	34/41	37/43
Aperture Stability	ASTM D 7864	N-m/degree	0.50	0.75	0.98
Installation Damage Resistance	ASTM D5818 or ISO 10722	%	98	98	98
Radial Stiffness @ 0.5% strain	ASTM D4595 or EN ISO 10319 / ASTM D6637	kN/m	>350	>550	N/A
pH Resistance	EN 14030	—	4 to 9	4 to 9	4 to 9

Geotextile Properties	Test Method	Units	Geofirma® AS15 0A (Standard)	Geofirma® AS2 70C (Optional)
Grab Strength	–	N	≥ 780	≥ 1330
CBR Burst Strength	AS3706.4	kN	≥ 1.8	≥ 3.5
Trapezoidal Tear Strength	AS 3706.3	N	≥ 310	≥ 480
G-Rating	Austrorads	–	≥ 1750	≥ 2825
Characteristic Opening Size	AS 3706.7	µm	≤ 110	≤ 100
Permeability	AS 3706.9	l/m ² /s	≥ 210	≥ 150
Permittivity	AS 3706.9	s-1	≥ 2.1	≥ 1.5

Dimensions		Units	20/20	30/30	40/40
Roll width	–	m	3.9/5.9	3.9/5.9	3.9/5.9
Roll length	–	m	50	50	50



About Us

Leaders in Geosynthetics

Global Synthetics is a 100% Australian-owned company, proud to offer a complete range of high-quality geosynthetic products backed by over 200 years of combined staff experience in the industry. We have supplied products to some of the largest recent infrastructure works in Australia. Global Synthetics provides major benefits to any geotechnical engineering project with the right products and our technical expertise.

Global Synthetics products are used in the following applications:

- Pavement Stabilisation
- Ground Improvement
- Soil Reinforcement and Retaining Structures
- Water Management
- Drainage Systems & Hydraulic Works
- Landfills
- Coastal Erosion Structures

Get in Touch

AUSTRALIA

Website

globalsynthetics.com.au

Email

info@globalsynthetics.com.au

New South Wales

(02) 9725 4321

North Qld

(04) 5921 1692

Victoria/Tasmania

(03) 9791 1772

Queensland

(07) 3865 7000

South Australia

(08) 8384 8894

Western Australia

(08) 9459 4300

NEW ZEALAND

Website

globalsynthetics.co.nz

Email

info@globalsynthetics.co.nz

Auckland

0800 510 120

Christchurch

0800 510 120

All information provided in this publication is correct to the best knowledge of the company and is given out in good faith. The information presented herein is intended only as a general guide to the use of such products and no liability is accepted by Global Synthetics Pty Ltd for any loss or damage however arising, which results either directly or indirectly from the use of such information.

Global Synthetics Pty Ltd have a policy of continuous development so information and product specifications may change without notice.

February 2025

Documents / Resources



[Global Synthetics GS_015 Pro Grid PP Geo Composite Geogrid](#) [pdf] Instruction Manual GS_015, GS_015 Pro Grid PP Geo Composite Geogrid, GS_015, Pro Grid PP Geo Composite Geogrid, Grid PP Geo Composite Geogrid, Geo Composite Geogrid, Composite Geogrid, Geogrid

References

- [User Manual](#)

Manuals+, Privacy Policy

This website is an independent publication and is neither affiliated with nor endorsed by any of the trademark owners. The "Bluetooth®" word mark and logos are registered trademarks owned by Bluetooth SIG, Inc. The "Wi-Fi®" word mark and logos are registered trademarks owned by the Wi-Fi Alliance. Any use of these marks on this website does not imply any affiliation with or endorsement.