

## global sources US-SSD01 Smart Dimmer Switch User Manual

[Home](#) » [global sources](#) » global sources US-SSD01 Smart Dimmer Switch User Manual 

# GLOBAL

### User Manual Installation for Smart Dimmer Switch Model: US-SSD01

#### Contents

- 1 [Power off the break](#)
- 2 [Find Neutral Wires.](#)
- 3 [Connect wires according to the marks on the switch.](#)
- 4 [FQA:](#)
- 5 [Wiring Examples](#)
- 6 [Documents / Resources](#)
- 7 [Related Posts](#)

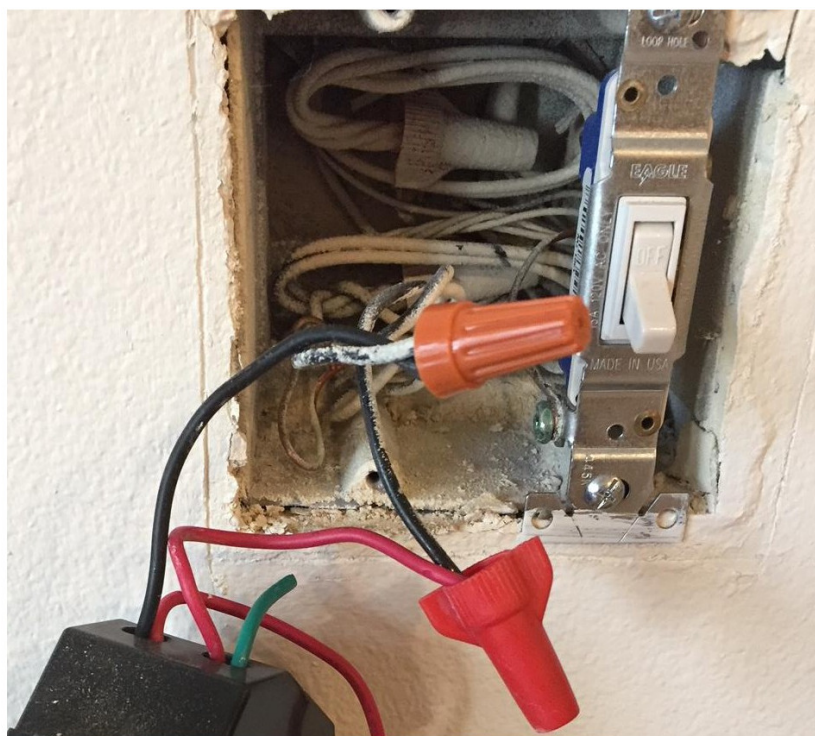
#### Power off the break



### **Find Neutral Wires.**

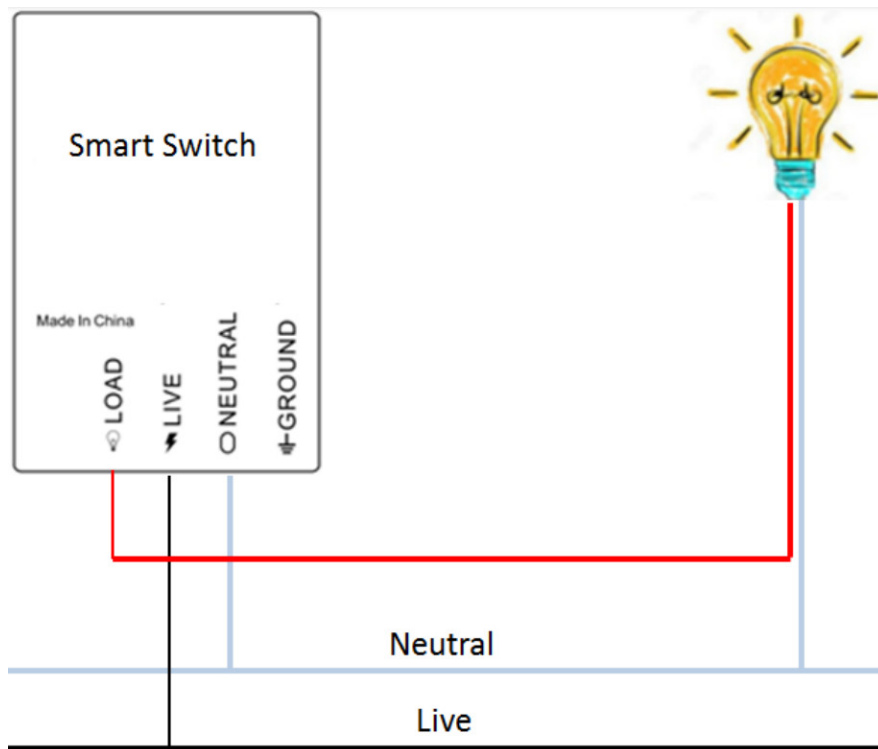
Make sure there is a neutral wire for the Wi-Fi switch. If not, the switches cannot work properly. Neutral wires are white and NOT used by your old switch. You can send us photos of the wiring status.

Figure 1 – Identify neutral wires



### **Connect wires according to the marks on the switch.**

Figure 2 – Wiring Diagram for Single Pole Circuit



Neutral Wires are necessary If you have any doubts, send us photos of the wiring condition

#### Notice:

1. Three lines must be connected (Live Line, Load Line, and Neutral Line);
2. If you really cannot find out a Neutral Line in the outlet box, STOP installing the switch and consult with a professional electrician or contact our service team.
3. After correct wiring, the switch must work well manually. Then, go to pair the switch on App.

#### FQA:

##### 1. How can I know it is connected correctly?

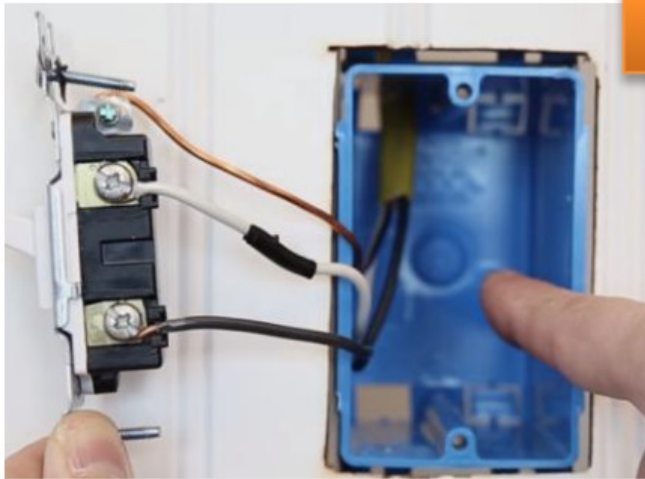
A: Press/Tap the switch button. It will work well manually after correct wiring.

##### 2. I cannot find the neutral wire in both outlet boxes; Can I still use this switch?

A: No, the neutral wire is necessary for the Smart Switch.

Although old switches do not need a neutral wire, there are spare white neutral wires in common outlet boxes.

Please send us photos of the wires inside the outlet boxes for assistance.



NO



YES

### 3. How can I find which one is the live (hot) line, which one is the load line?

A: Besides the ground wire, there are two wires on your old switch in general:

Use a tester to check which one has power when the hold switch is off status; You can connect them on wifi switch by trial and error;

### Wiring Examples

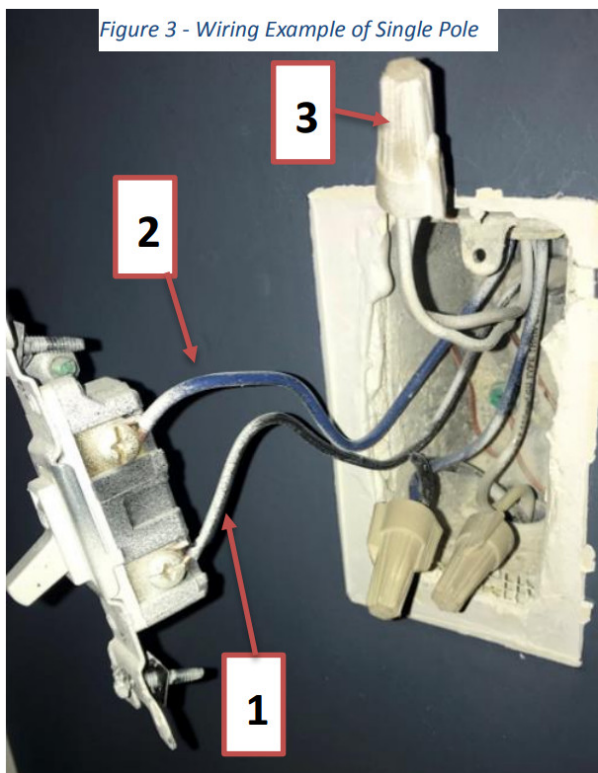


Figure 3 - Wiring Example of Single Pole

1 -- > Live  
2 -- > Load  
3 -- > Neutral

This equipment has been tested and found to comply with the limits for a Class B digital device, pursuant to Part 15 of the FCC Rules. These limits are designed to provide reasonable protection against harmful interference in a residential installation. This equipment generates uses and can radiate radio frequency energy and, if not installed and used in accordance with the instructions, may cause harmful interference to radio communications. However, there is no guarantee that interference will not occur in a particular installation. If this equipment does cause harmful interference to radio or television reception, which can be determined by turning the equipment off and on, the user is encouraged to try to correct the interference by one or more of the following measures:

- Reorient or relocate the receiving antenna.
- Increase the separation between the equipment and receiver.
- Connect the equipment into an outlet on a circuit different from that to which the receiver is connected.

— Consult the dealer or an experienced radio/TV technician for help.

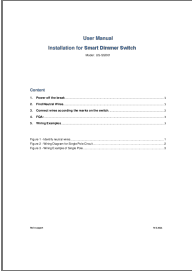
This device complies with part 15 of the FCC Rules. Operation is subject to the following two conditions:

(1) This device may not cause harmful interference, and (2) this device must accept any interference received, including interference that may cause undesired operation.

Changes or modifications not expressly approved by the party responsible for compliance could void the user’s authority to operate the equipment.

This equipment complies with FCC radiation exposure limits set forth for an uncontrolled environment. This equipment should be installed and operated with a minimum distance 20cm between the radiator and your body.

**Documents / Resources**

	<a href="#">global sources US-SSD01 Smart Dimmer Switch</a> [pdf] User Manual SSD, 2ANJ7-SSD, 2ANJ7SSD, US-SSD01 Smart Dimmer Switch, US-SSD01, Smart Dimmer Switch
---	--