



## global sources SMART1 Smart Doorbell User Guide

[Home](#) » [global sources](#) » global sources SMART1 Smart Doorbell User Guide 

### global sources SMART1 Smart Doorbell User Guide



#### Contents

- [1 Main Features](#)
- [2 Preparation](#)
- [3 Set up App & Configure Device](#)
- [4 Setting up the chime unit & pairing chime to doorbell](#)
- [5 How to mount your doorbell](#)
- [6 Charging Your Doorbell](#)
- [7 Privilege Service](#)
- [8 FCC Information](#)
- [9 Documents / Resources](#)
- [10 Related Posts](#)

#### Main Features



100% Wire-free  
operation



Super wide view an



IP65 Waterproof



Clear night-vision



1080P FULL HD  
video



Two-way full-duplex  
communication



TF card recording up  
to 128GB

## Packing List

Open the package and make sure the Smart Wi-Fi battery doorbell (device) is intact, and with all the below accessories.



1 x Smart wifi battery doorbell



1 x USB Cable



1 x User manual



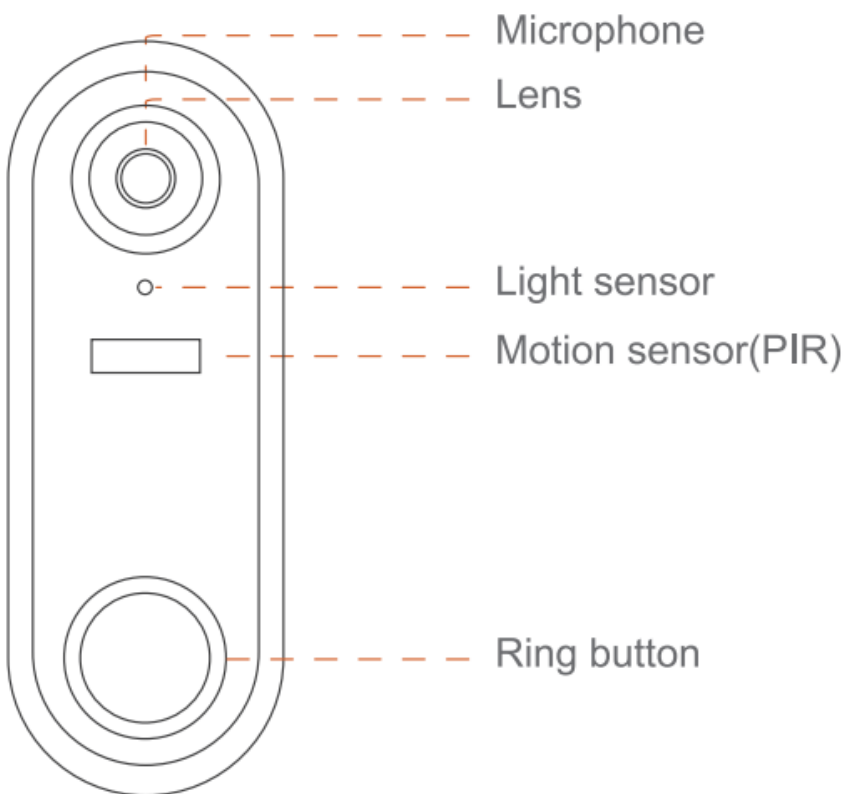
1 x Screw Package  
Screw, Screw cap



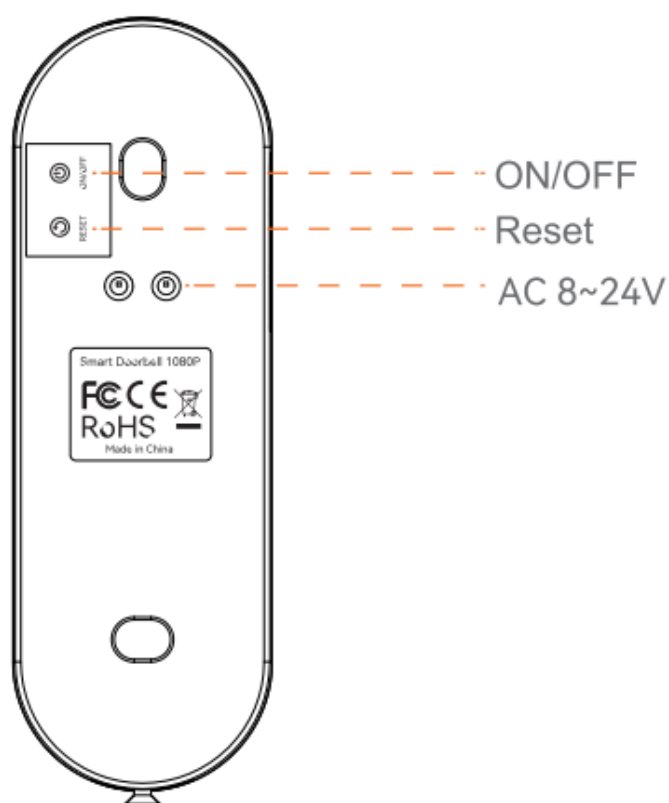
1 x 3M Stickers



1 x Small wrench



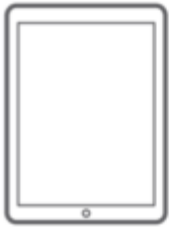
Component	Description
Speaker	Audio channel
Lens	Capture Videos
Infrared LED	Additional Light in Low-light Conditions
Light Sensor	Infrared Light Adjustment
Indicator light	Status indicator light which shows the device's working status.
Doorbell button	You will receive notification or call by the App when its pressed
Microphone	Transfer the sound to "TUYA SMART" App



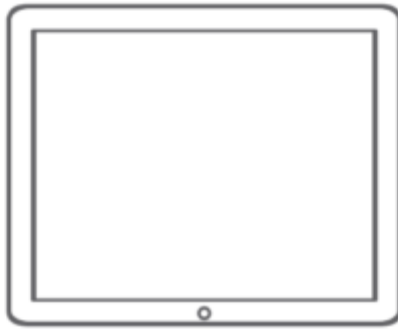
Component	Description
CE Label	Product Label
Reet	By pressing the reset button on the back of the device for more than 3 seconds, you will hear a sound and see the indicator light blinks red. (Be advised that all your data on the device will be reset to default).
USB Port	Connect to charge the unit
Power Switch	Power OFF/ON

## Preparation

One smartphone or tablet PC with IOS 9.0 or Android 4.4 operating system or higher (This model does not work with a Mac or Windows PC).



Android phone



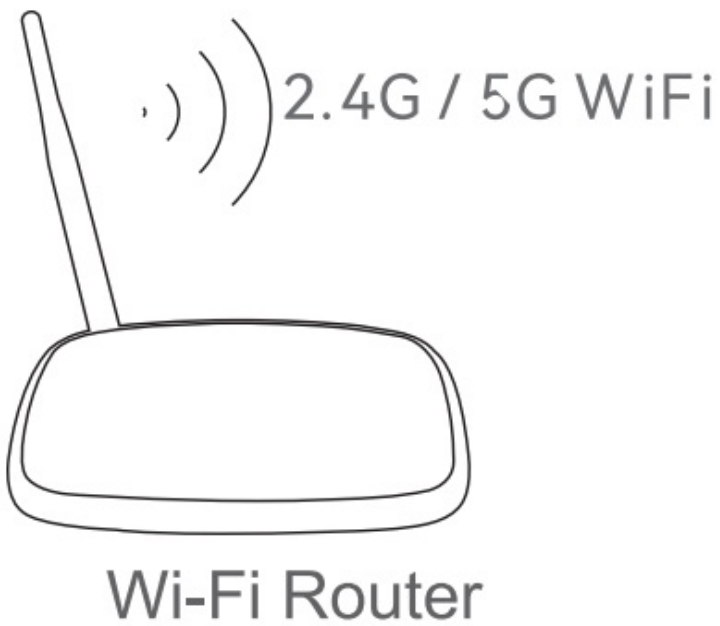
iPad



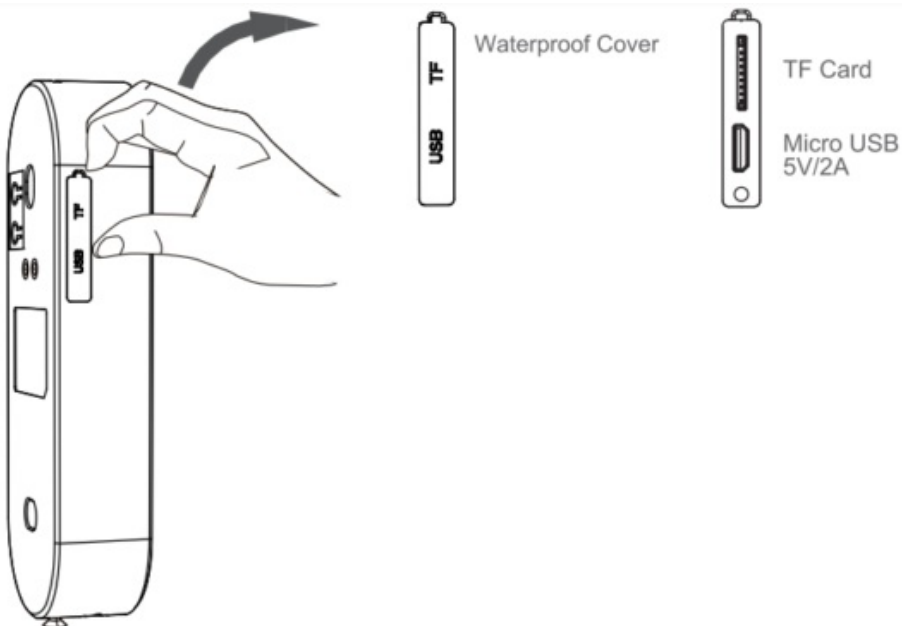
iPhone

### Wi-Fi Router

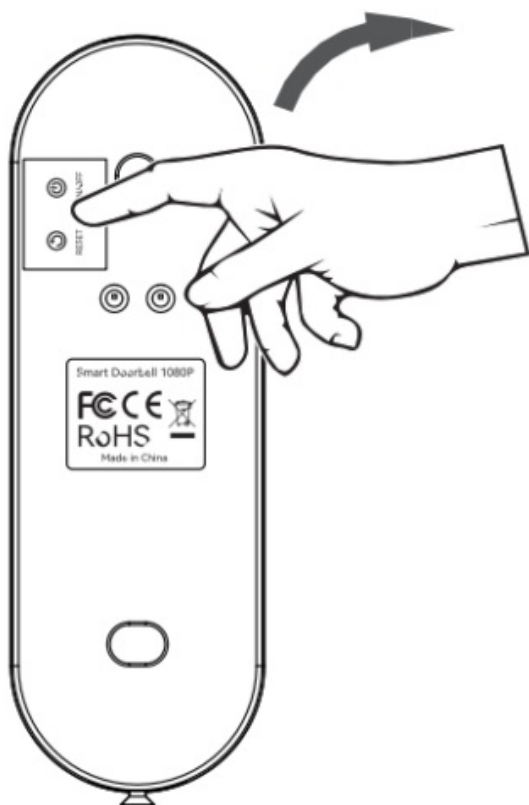
- This device support 2.4G and 5G Wi-Fi both, please select a strong Wolff to connect it to mobile app.



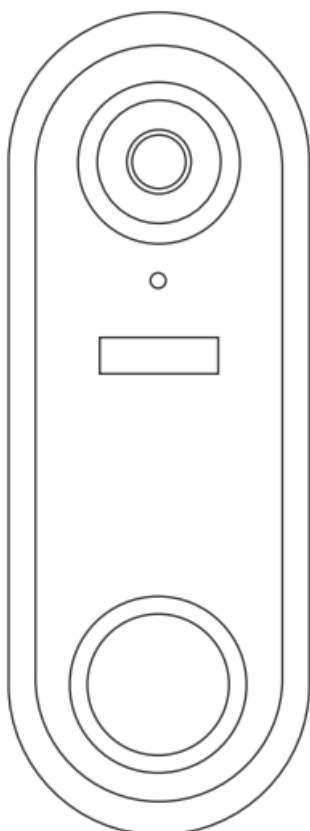
1. open the waterproof cover on the side of the device slot and insert the TF card into car.



2. Switch it from [OFF] to [ON], and press the reset buttons.



3. If you see the red Indicator light blinking, then the operation has already begun.



NO.	LED Status	Device Status
	Blue on and slow blinking red LED	Configuration status;
2	Blue on and fast biking red LED	Trying to connect to WiFi
3	Blue and red are on	Low power
4	Blue LED	Network is successful and working properly or watch live video
5	Blue and red LED are off	Sleep mode or off-line

## Set up App & Configure Device

Search and download-rum win-in major application markets or scan the QR code below to download the APP.



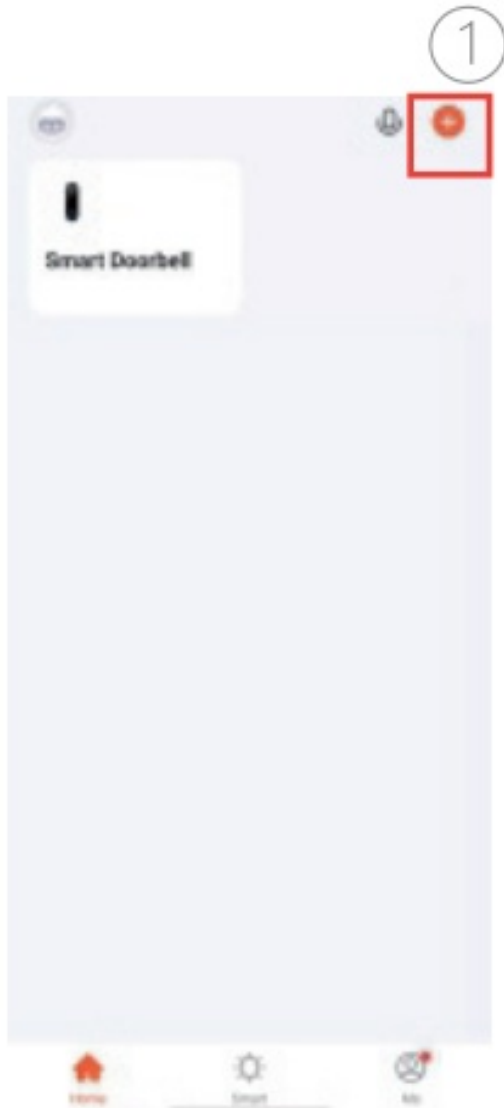
Once you download the APP to your smart phone, you may enter the first page which you can Login with existing account or Register.

( If you are the new user of TUYA SMART and don't have an account. please choose register first and follow the below screenshots to complete the registration. )

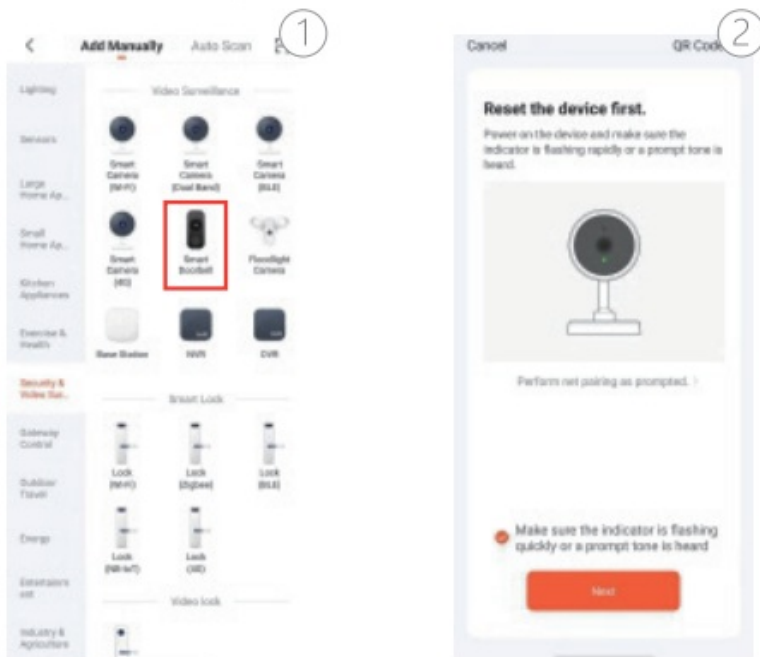




**Step 1:** click “Add Device “or click”+” on top of right on this page.

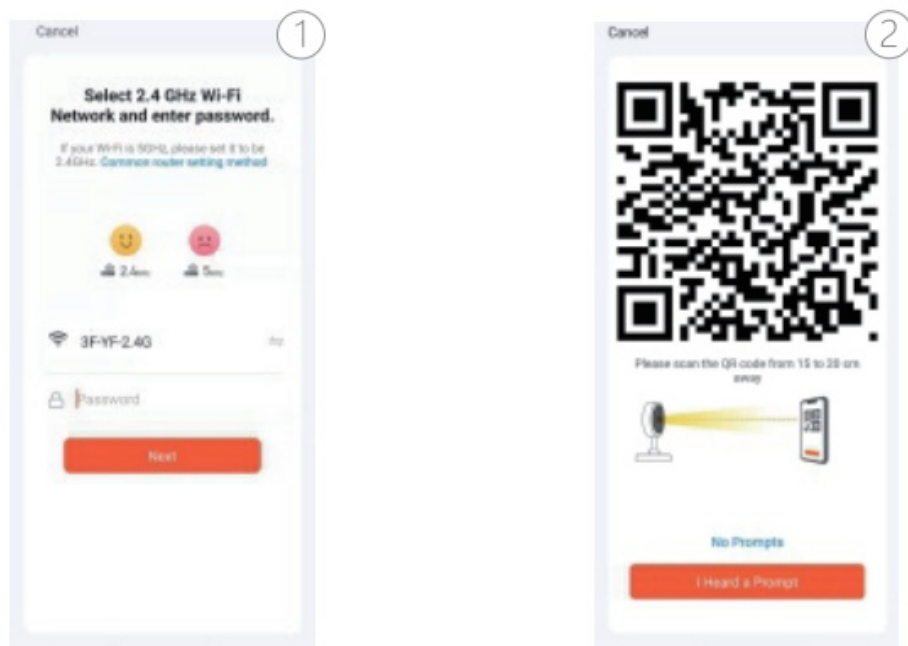


**Step 2:** Choose “Security & Sensor and follow the screenshots below.

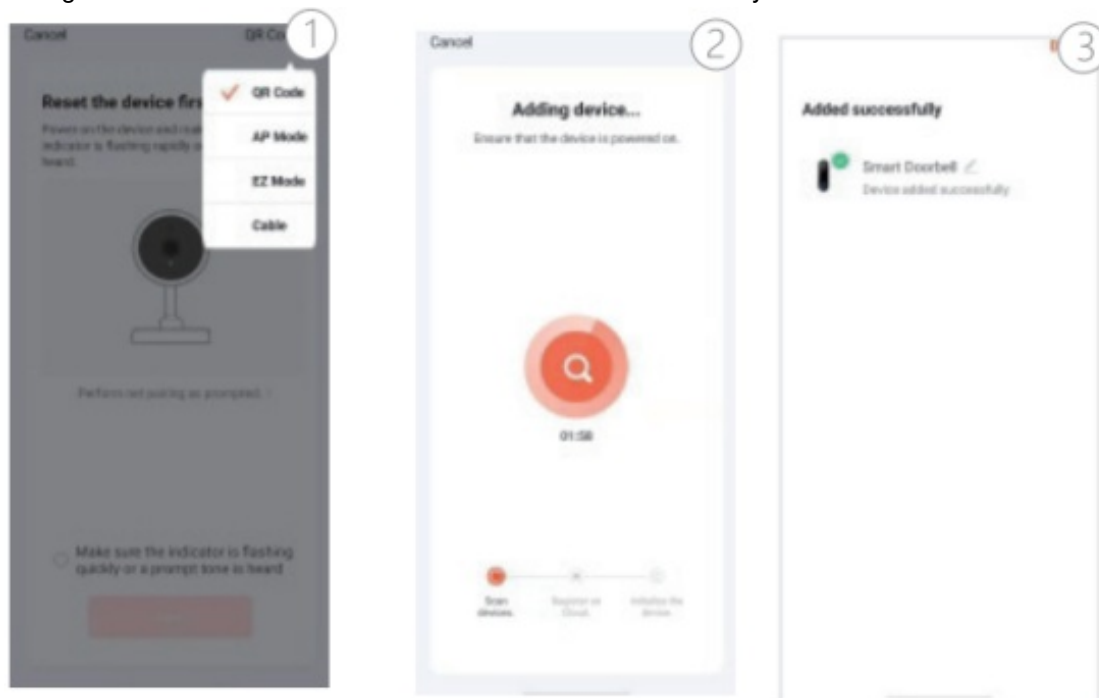


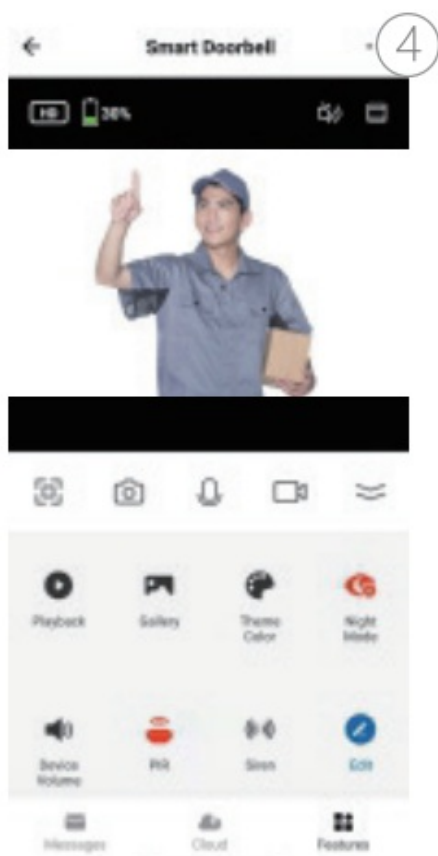
**Step3:** You may choose next step to go to QR code pairing mode or you may go to “other Mode” on top of right to

enter the page of choosing QR Code Net-pairing or Smart configuration, if you choose the “next step”, you may follow the below screenshots:



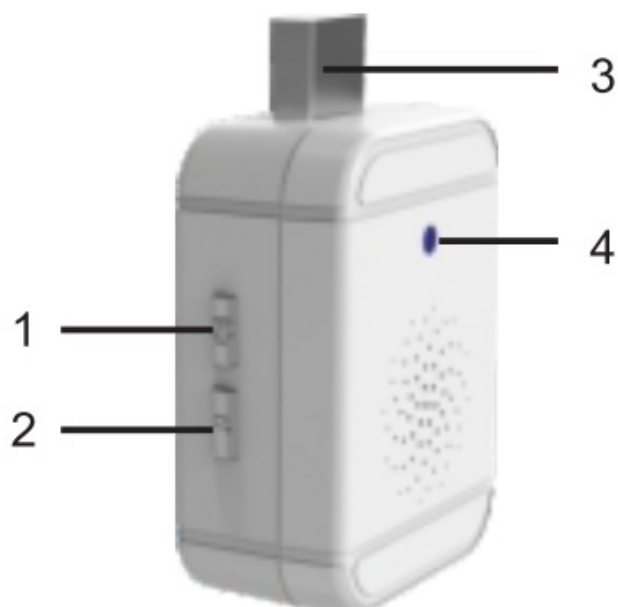
**Step 4:** If you choose "the other mode" on the top of the right side, you may find QR Code Net-pairing Which you will go back to the "Add Device" page and process it again like above procedure. Or you can choose "Smart configuration" and follow the below screenshots and after that you will see the device added successfully.





## Setting up the chime unit & pairing chime to doorbell

### Overview



1. Playing button: play current melody
2. Cycle select button: cycle play next melody
3. USB plug (power)
4. Status indicator

### Pairing with video doorbell

1. Power the doorbell by using a USB adapter (not included) close to the video doorbell. After installation, you can relocate the door chime.
2. Open the app “Tuya Smart” on your mobile device.
3. Add the video doorbell on the app.
4. Press and hold the playing button and cycle select button for 3s, until the indicator turn red, then press the call button on video doorbell in 15s to connect the chime to the doorbell, then the indicator off and chime ringing.
5. Test the device by pressing the doorbell button on the video doorbell.
6. Relocate and power the doorbell anywhere else within a range of 30meter.(Open environment) from the doorbell.

### **Volume selection**

Cycle play and select the volume by short pressing the Playing button and Cycle select button at same time. There are 3 level ringing volume.

### **Melody selection**

The chime device provides a choice of 20 different melodies. When the chime is powered, press the Cycle select button to play next music until you hear the one you like.

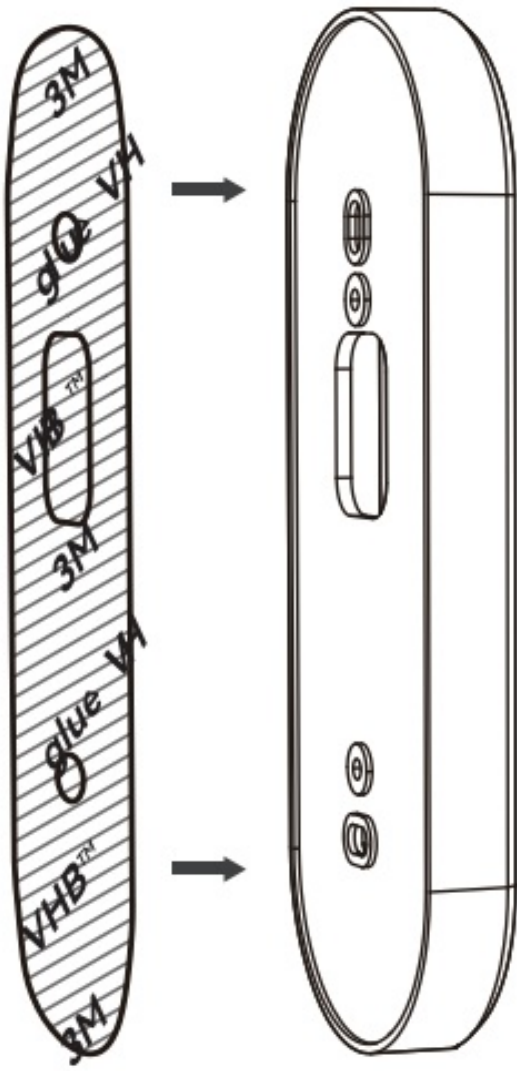
### **Clean all pairing memory**

Press and hold the Playing button and Cycle select button until plug into the USB slot for 3s, the indicator will be flashing red, after the indicator off it means the clean operation successfully, then you can release the two buttons.

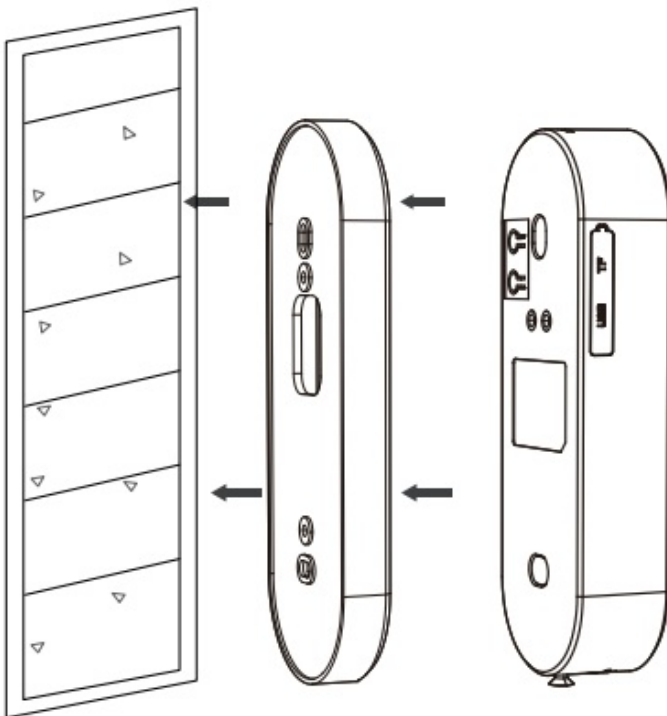
## **How to mount your doorbell**

### **Method 1:** Attaching to a smooth wall surface

1. Stick the double sided 3 m sticker on the bracket (rain cover).

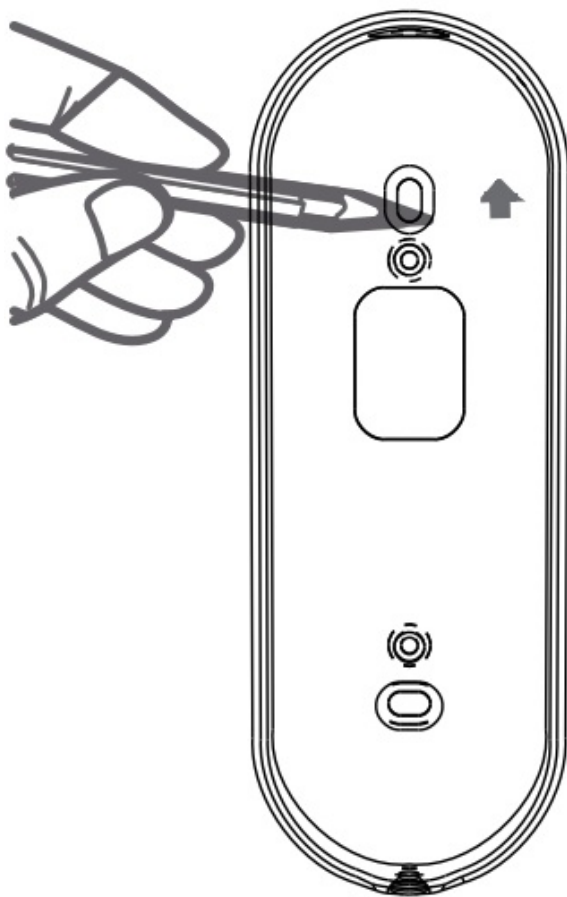


2. Tear off the protective film on the 3M sticker, apply it on a smooth wall surface at the appropriate height. Hang the device on the bracket from top down lining up the hole at back of device. Tighten the screw on the

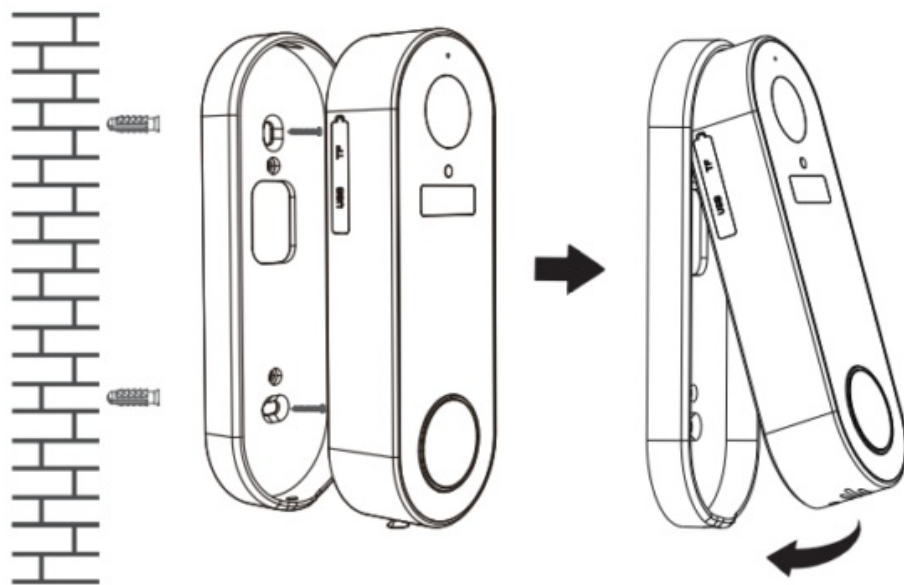


**Method 2:** If you want install the device on a rough wall (such as concrete, brick or a wooden surface), use screws to fix the bracket.

1. Line up the bracket at your desired location on the wall and mark your drill points within the top and bottom holes.



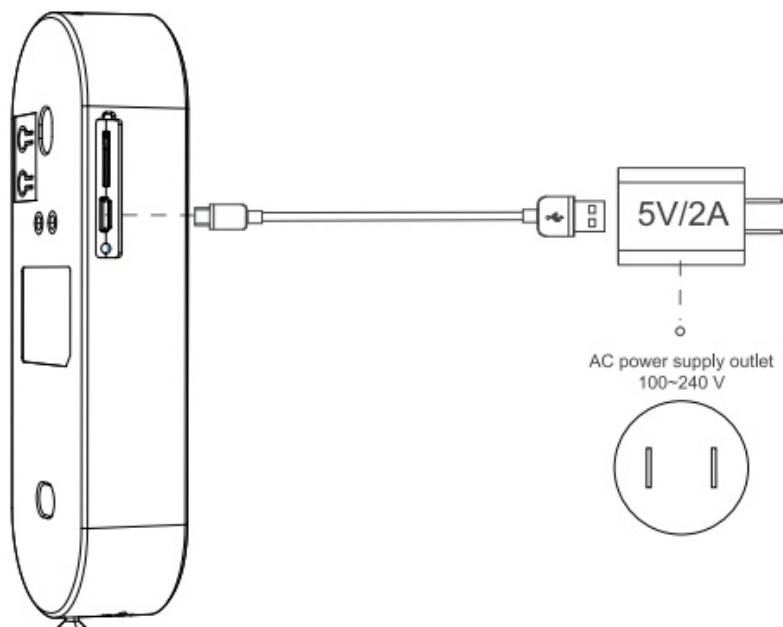
2. Using a drill and suitable drill bit, tighten the bottom screw into the surface until secure. Repeat for the top hole. Then insert doorbell into the bracket and affix security screw.



## Charging Your Doorbell

- Chosen the screw at the bottom of the doorbell and remove the doorbell from bracket. You will hear the alarm sound for approx. 1 minute.
- Take the device inside for charging. Using the supplied micro USB cable, connect the device to a 5V/2A USB power adaptor and allow the unit to charge for a minimum of 4 hours. (For convenience, you can use the USB

adaptor of your mobile phone)



### Privilege Service



30 Day  
Money Back



1 Years  
Warranty



Lifetime  
Tech Support



90-Days  
Replacement

Warm tip

Scan it to activate the 12 months replacement service



[www.koorui.net](http://www.koorui.net)



[Support@koorui.net](mailto:Support@koorui.net)

## FCC Information

This equipment has been tested and found to comply with the limits for a Class B digital device, pursuant to part 15 of the FCC Rules. These limits are designed to provide reasonable protection against harmful interference in a residential installation. This equipment generates, uses and can radiate radio frequency energy and, if not installed and used in accordance with the instructions, may cause harmful interference to radio communications. However, there is no guarantee that interference will not occur in a particular installation. If this equipment does cause harmful interference to radio or television reception, which can be determined by turning the equipment off and on, the user is encouraged to try to correct the interference by one or more of the following measures:

- Reorient or relocate the receiving antenna.
- Increase the separation between the equipment and receiver.
- Connect the equipment into an outlet on a circuit different from that to which the receiver is connected.
- Consult the dealer or an experienced radio/TV technician for help.

This device complies with part 15 of the FCC Rules. Operation is subject to the following two conditions:

1. This device may not cause harmful interference, and
2. this device must accept any interference received, including interference that may cause undesired operation.

changes or modifications not expressly approved by the party responsible for compliance could void the user's authority to operate the equipment.

This equipment complies with FCC exposure limits set forth for an uncontrolled environment.

This equipment should be installed and operated with minimum distance of 20 cm between the radiator and your body.

This transmitter must not be co-located or operating in conjunction with any other antenna or transmitter.

## Documents / Resources





[global sources SMART1 Smart Doorbell](#) [pdf] User Guide  
SMART1, 2A536-SMART1, 2A536SMART1, SMART1 Smart Doorbell, Smart Doorbell