

global sources

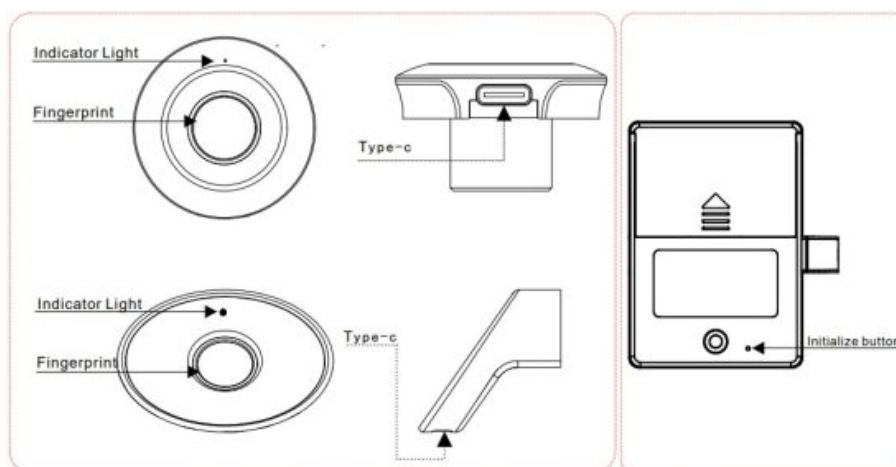
User Manual

— S102&C200-F-TY —

Contents [[hide](#)]

- [1 Product Introduction](#)
- [2 Technical parameter](#)
- [3 Operation instruction](#)
- [4 Special feature description](#)
- [5 Documents / Resources](#)
 - [5.1 References](#)

Product Introduction



Technical parameter

material	ABS&&zinc alloy	Fingerprint capacity	50 pcs	App	TuyaSmart/Smart Life
Operating temperature	-20° ~ 55°	Recognition time	≤0.5s	USB key	Optional
Working humidity	10% ~ 85% RH	Static current	≤45uA	Battery type	3 AAA (No. 7) alkaline batteries
Number of users	10 to 50 pcs are optional	Dynamic current	≤120mA	Emergency power supply	Type-c

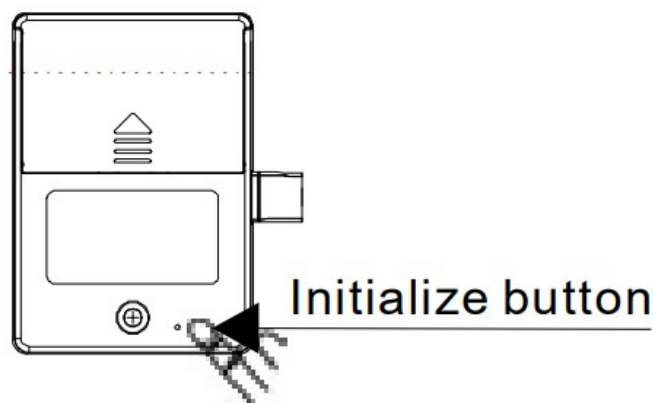
Operation instruction

1. No fingerprint is added at the factory, and any fingerprint can be unlocked.
2. Please pay attention to the light prompts of the smart lock. (A green indicator light means correct, and a red indicator light means wrong).

I. Initialize

Insert three AAA-sized alkaline batteries into the battery compartment on the rear panel. Subsequently, plug the connector of the rear panel into the socket of the front panel. Press and hold the Initialize button until the green LED remains steadily lit, indicating the lock has been initialized. After initialization, the device will be unpaired, and all programmed fingerprint templates will be erased.

(The lock is pre-initialized at the factory.)



II. Networking of devices

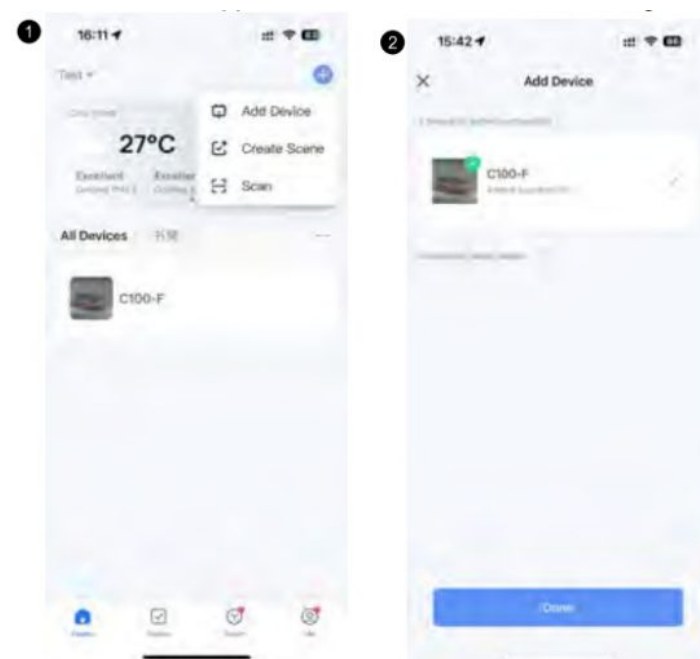
>**Tip:** This product is a Bluetooth smart cabinet lock. The App administrator is the final administrator of the lock. The owner of the Bluetooth smart cabinet lock must download the Smart Life App or the Tuya App for binding.

1. Please download and install the Smart Life App or Tuya Smart from the Apple Store or mobile app market.
2. After the installation is complete, follow the prompts to register and log in.
3. Users can also scan the following QR code to download and install the application:

	
https://smartapp.smart321.com/smartlife	https://smartapp.tuya.com/tuya

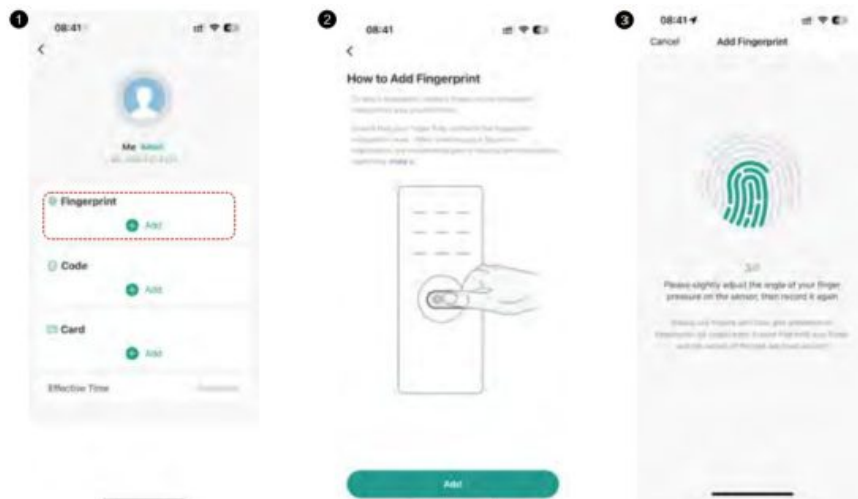
III. Add Bluetooth lock

>To add a device to the app, touch the fingerprint to wake up the device before adding.



IV. Fingerprint Registration

Place your finger in the fingerprint area and read the same finger repeatedly (different angles) to complete the registration.



Special feature description

►► Illegal Fingerprint Alarm:

When a wrong fingerprint is detected, the red light will turn on.

►► Low voltage alarm:

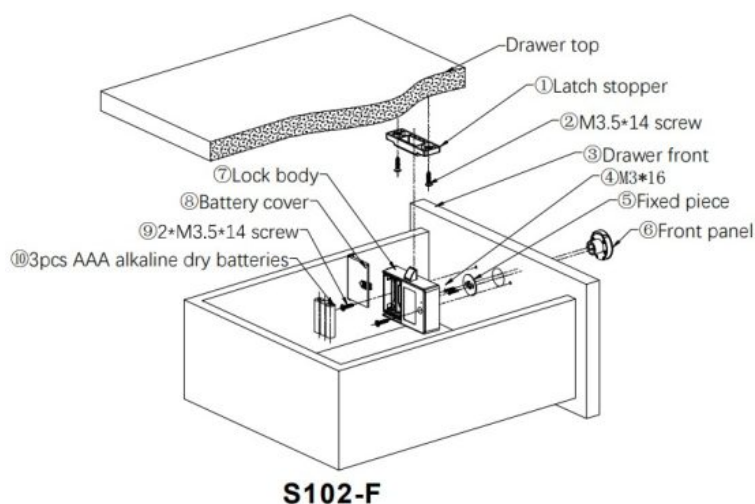
When the red indicator light flashes continuously for 3 seconds during unlocking, it indicates that the smart lock is in a low-voltage state. Please replace the battery in a timely manner.

►► Emergency unlocking:

When the smart lock cannot be unlocked due to low power, you can use a 5V power bank to unlock the smart lock through the Type-C interface.

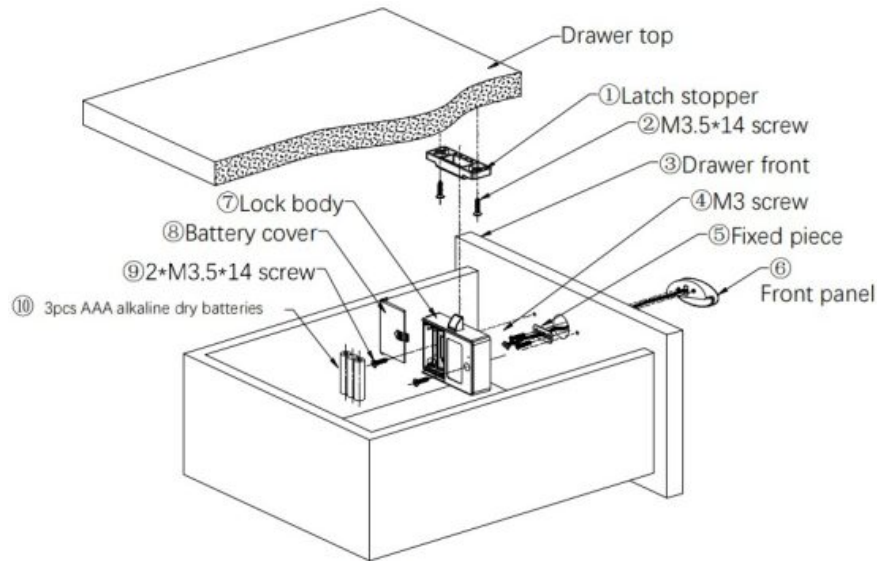
► Before installation, test whether the smart lock works properly

► Please scan the QR code on the right to watch the installation video





<https://qr61.cn/o0un0S/qLTlnN9>



C200-F



<https://qr61.cn/o0un0S/qHtkNjZ>

global
sources

Documents / Resources

	Global Sources S102 Bluetooth Smart Cabinet Lock [pdf] User Manual S102-F, C200-F-TY, S102 Bluetooth Smart Cabinet Lock, S102, Bluetooth h Smart Cabinet Lock, Smart Cabinet Lock, Cabinet Lock
--	---

References

- [User Manual](#)

global sources

Bluetooth Smart Cabinet Lock, C200-F-TY, Cabinet Lock, global sources, S102, S102 Bluetooth Smart Cabinet Lock, S102-F, Smart Cabinet Lock

Leave a comment

Your email address will not be published. Required fields are marked *

Comment *

Name

Email

Website

☐ Save my name, email, and website in this browser for the next time I comment.

Post Comment

Search:

e.g. whirlpool wrf535swhz

Search

[Manuals+](#) | [Upload](#) | [Deep Search](#) | [Privacy Policy](#) | [@manuals.plus](#) | [YouTube](#)

This website is an independent publication and is neither affiliated with nor endorsed by any of the trademark owners. The "Bluetooth®" word mark and logos are registered trademarks owned by Bluetooth SIG, Inc. The "Wi-Fi®" word mark and logos are registered trademarks owned by the Wi-Fi Alliance. Any use of these marks on this website does not imply any affiliation with or endorsement.