

global sources LSP902C High Quality 2.1CH 60W Soundbar



# global sources LSP902C High Quality 2.1CH 60W Soundbar User Guide

[Home](#) » [global sources](#) » global sources LSP902C High Quality 2.1CH 60W Soundbar User Guide 

## Contents

- 1 [global sources LSP902C High Quality 2.1CH 60W Soundbar](#)
- 2 [Product Information](#)
- 3 [Product Usage Instructions](#)
- 4 [Frequently Asked Questions](#)
- 5 [Safety Caution](#)
- 6 [Product function](#)
- 7 [Remote control](#)
- 8 [Battery installation](#)
- 9 [Product connection and use](#)
- 10 [Product operation Instructions](#)
- 11 [Bluetooth Play](#)
- 12 [Troubleshooting](#)
- 13 [Technical Specification](#)
- 14 [FCC STATEMENT](#)
- 15 [Product installation instructions](#)
- 16 [Documents / Resources](#)
  - 16.1 [References](#)



global sources LSP902C High Quality 2.1CH 60W Soundbar



## Product Information

### Specifications

- Model: LSP-902(C)
- Product Type: Soundbar
- Input Ports: 3.5mm audio, HDMI eARC/ARC, USB, Optical fiber, DC power
- Control: Remote control with Bass, Treble, and EQ settings
- Power Source: Power button

### Product Usage Instructions

#### Safety Caution

To ensure safety while using the soundbar:

- Avoid exposing the device to rain or humidity.
- Do not place liquid objects near the device.
- Unplug the power cord when not in use.

#### Battery Installation

To install batteries in the remote control:

1. Open the battery case at the bottom of the remote control.
2. Insert two AAA/R03 1.5V batteries with correct polarity.
3. Close the battery case securely.

### Product Connection and Use

#### Connect to TV via HDMI eARC/ARC

1. Connect HDMI cable from TV to soundbar's HDMI eARC/ARC port.

2. Set HDMI CEC to on in TV settings.
3. Set soundbar as external sound system in TV settings.
4. Ensure soundbar is in eARC/ARC mode.

### **Connect to TV via Fiber Optics**

1. Use a fiber cable to connect TV's fiber output to soundbar's audio fiber input.
2. Set soundbar as sound system in TV settings.
3. Tune soundbar to fiber mode.

### **Connect to TV via Bluetooth**

1. Power on the soundbar and switch input mode to Bluetooth (BT).
2. In TV settings, search for Bluetooth devices and select soundbar name LSP-902(C) to connect.

## **Frequently Asked Questions**

### **Q: How do I adjust the bass and treble settings?**



A: Long press the Bass or Treble button on the remote to enter settings, then use the up/down keys to adjust. Short press to exit.

### **Q: What should I do if the remote control is not working?**

A: Check battery polarity and replace if needed. If not in use for a long time, remove the batteries to prevent leakage.

## **Safety Caution**

### **Symbols in these instructions**

-  Warning
  - Danger to human being
-  Caution
  - Potential danger to devices or other objects

### **Important safety instructions**

This device is designed and manufactured to ensure your personal safety. However, improper use can result in a potential electrical shock or fire hazard. Please read all safety and operation instructions carefully before installation and use, and keep these instructions for future reference. Please pay attention to all the warnings listed in these instructions and devices.

1. Water and fog

The device should not be used near water. For example: near a bathtub, wash basin, kitchen sink, laundry tub, swimming pool or basement.

## 2. Ventilation

Stay away from areas that affect the heat dissipation of the device (for example: beds, sofas, bookcases or cabinets) and keep the air flowing while the device is playing.

## 3. Heat source

The device should be kept away from heat sources such as heaters or other heat generating appliances (including loudspeakers).

## 4. Power supply

The device may only be connected to a power supply of the type described in the operating instructions or marked on the device.

## 5. Power cable protection

The power cord should be well placed and not trampled or squeezed by other objects. If you do not use this device for a long time, pull out its power cable plug from the socket.

## 6. Clean

This device can only be cleaned with dry cloth

## 7. Debris and liquids

Do not allow debris or liquid to enter the device from the opening.

## 8. Accessories

Please don't use accessories that are not recommended by the manufacturer.

## 9. Lightning and surge protection

Unplug the device from the wall socket. This prevents damage to the product due to lightning strikes and power line surges.

## 10. Overload

Please don't load too much equipment in the wall socket or drag online, otherwise it may lead to electric shock risk.

## 11. Maintenance

In the following cases, this device should be by qualified maintenance personnel to carry out maintenance

- a. the power cord or plug is damaged
- b. Object falling or liquid splashing into the housing of the device.
- c. The device was drenched in rain
- d. The device is dropped or the shell is damaged
- e. The device cannot operate normally or its performance has obvious changes

## 12. When the device is not in use

If the device is not used for a long time, such as a month or more, the power cord should be unplugged from the device to prevent damage.

## 13. Repair

Please don't remove any cover, internal device or adjust the internal device without authorization. Please leave it to our professional personnel for repair.

## 14. Warning

Refer to the manual, or the information on the bottom of the device housing, for electrical parameters and safety information before installing or operating the device.

- To reduce the risk of fire or electric shock, don't expose the device to rain or humidity. The device shall not be exposed to dripping or splashing water, and shall not be placed on the device with liquid objects, such

as vases.

- The power plug is used to disconnect the power supply of the device. When it is used up, the power cord should be unplugged and kept safe and ready for operation at any time.

The following symbols can be found on the device and should indicate the following information.



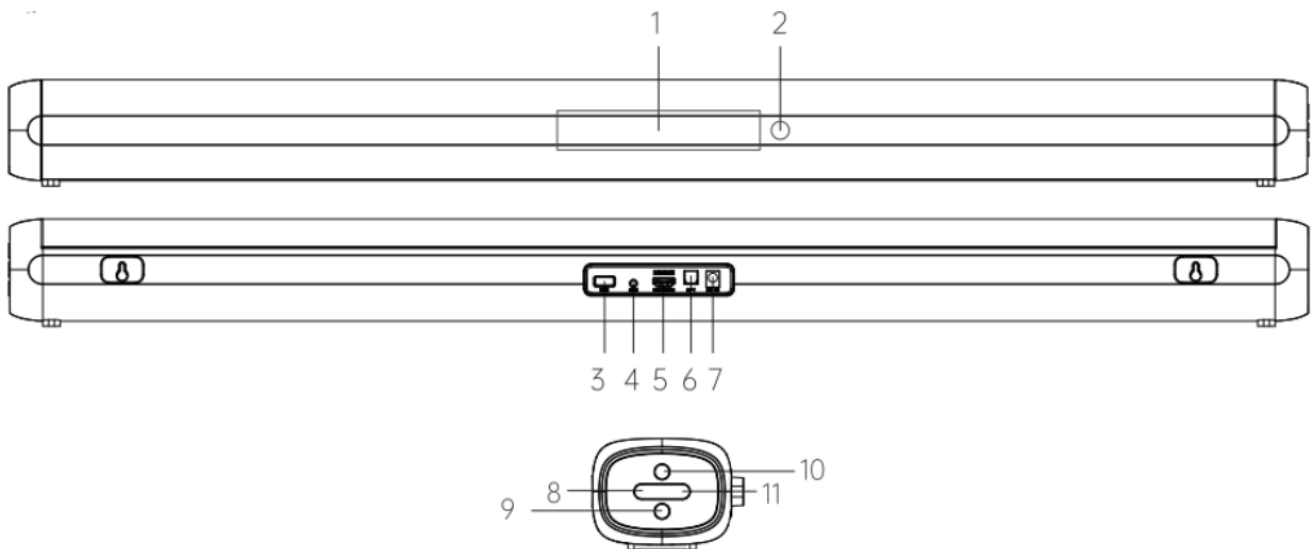
- The lightning symbol warns users of dangerously high pressure inside the enclosure



- An exclamation mark indicates that important instructions or maintenance 4 instructions in the accompanying guide should be noted.

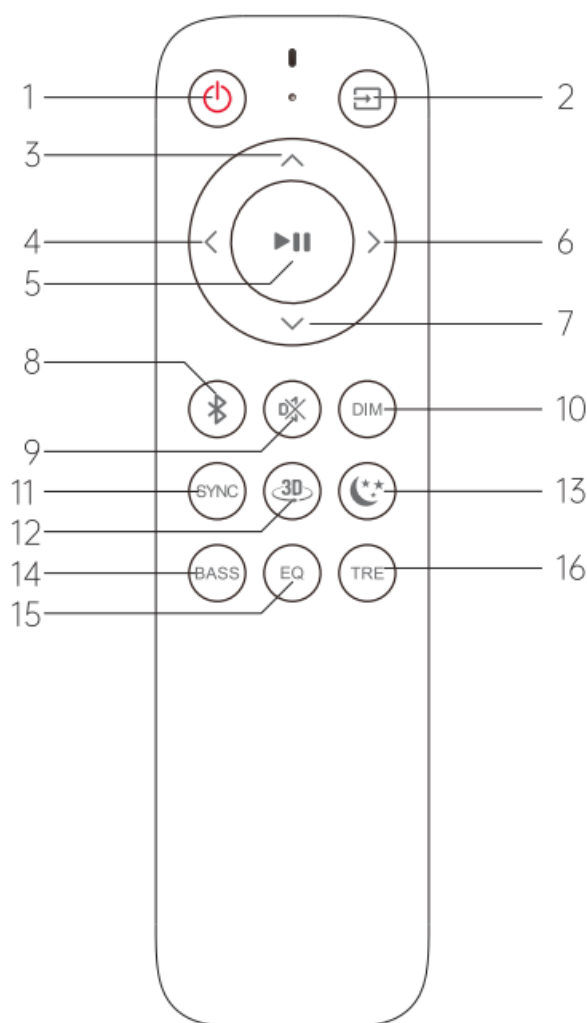
## Product function

### Soundbar



1. LED display panel
2. Remote control receiver
3. USB interface.
4. 3.5MM audio input port
5. HDMI eARC/ACR port
6. Optical fiber interface
7. DC power input port
8. Volume-
9. Input source
10. Power button
11. Volume-

## Remote control



### 1. Power

Press to turn on or off

### 2. Input

Press to change the input source

### 3. Volume +(up)

Press to increase volume

### 4. Previous

Switch the previous song in the BT/USB input

### 5. Enter/Play /Pause

Press to select an option Press to play or pause

### 6. Next

Switch to the next song in the BT/USB input

### 7. Volume -(down)

Press to decrease volume

### 8. Bluetooth

Short press to check Bluetooth status long press to disconnect the current connection, and re-enter the Bluetooth pairing state

### 9. Mute

Press to mute/unmute

#### 10. DIM

Press to adjust display brightness

#### 11. Sync

Long press to enter Audio Sync settings, then short press the up/down key to adjust and short press to exit Audio sync Settings.

#### 12. 3D Surroun

press to turn on/off 3D Surround mode .

#### 13. Night

Short press to enable/disable night mode

#### 14. Bass

Long press to enter the Bass Settings, then short press the up/down key to adjust, and short press to exit the Bass Settings

#### 15. EQ

Switch three modes: MUSIC, MOVIE and NEWS

#### 16. Treble

Long press to enter Treble Settings, then short press the Up/down key to adjust, and short press to exit Treble Settings

### **Battery installation**

Open the battery case at the bottom of the remote control. Insert two AAA/R03 1.5V batteries and close the battery case (be noted about the correct polarity, see Battery case section).

### **Attention**

If the remote control is not used for a long time (more than one month), please remove the battery, because the battery may leak and damage the remote control.

### **Notices about the batteries**

1. If the battery leaks, wipe the leakage from the battery case and replace the battery with a new one.
2. Please do not use other batteries which are not specified by the device..
3. Please do not heat or remove the battery and throw them into fire or water.
4. Please do not carry or store other metal objects with the battery. Otherwise, the battery may short circuit, leak or explode.

### **Product connection and use**

#### **Connect the soundbar to the TV**

Connect to the TV through HDMI eARC/ARC Connect the HDMI cable to the TV (HDMI eARC/ARC) port and the audio HDMI eARC/ARC port. The HDMI CEC is set to be on in TV setting, the soundbar is set to "external sound" in the TV setting, and the soundbar is set to eARC/ARC mode



Soundbar and TV

### Connect to the TV through fiber optics

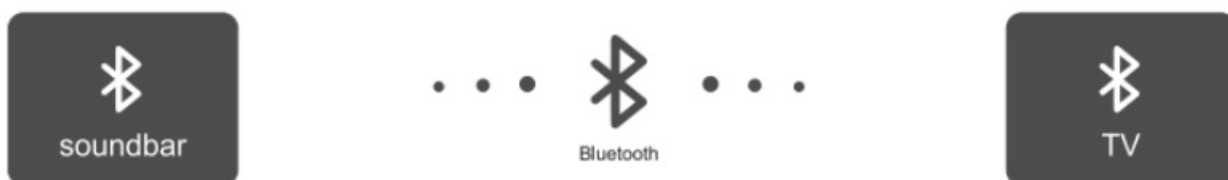
A fiber cable is used to connect the TV fiber output interface and the audio fiber input interface. The soundbar is set as "sound system" in the TV setting, and the soundbar is tuned to the fiber mode



Soundbar and TV

### Connect to the TV through Bluetooth

After the soundbar is powered on, press the power button to start, and set the input mode to Bluetooth (BT). In the TV Settings, find Bluetooth and click Search. After searching for the soundbar name LSP-902(C), click Confirm to automatically connect

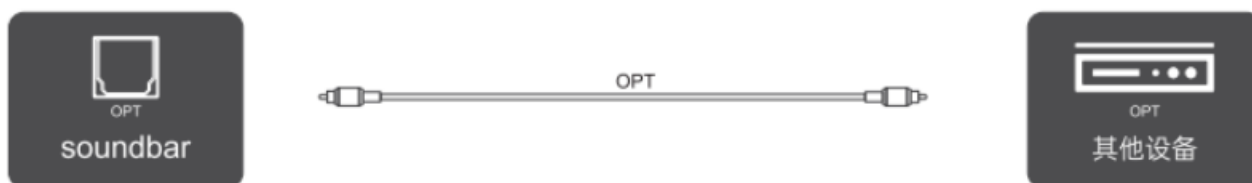


Soundbar and TV

### Connect the soundbar to (set-top box, player, Blu-ray DVD, computer etc.)

#### Connect to other devices via fiber optic cable

Use a fiber optic cable to connect the fiber optic output connector of other devices (set top box, player, Blu-ray DVD, computer) to the soundbar fiber optic input connector.



#### Connect to other devices via AUX cable



Use an AUX cable to connect the left and right channel output jacks of other devices (set-top box, player, Blu-ray DVD, computer) to the Soundbar AUX input jacks. The audio output mode of other devices (set-top box, player, Blu-ray DVD, computer) should be set to PCM mode.




## Connect the bar to mobile phone

Connect to your phone via Bluetooth

After power on, press the power button to turn on the soundbar, turn the input mode to Bluetooth state, then find the Bluetooth in the phone settings and tap Search, after find the Bluetooth which name is “LSP-902 (C)”, tap to confirm and it will connect automatically.



## Product operation Instructions

1. When the Soundbar is connected to the 220V power socket with the power adapter (24V/2A), the soundbar enters the standby mode.
2. Press the power button of the remote control or the power button of the soundbar to turn on the soundbar, when the display of the front panel shows “HELLO”, it is turned on.
3. According to the way you choose to connect the soundbar, press the switch mode button  on the remote control or the button Con the soundbar to switch the input mode (BT, OPT, AUX, USB,HDMI eARC/ARC).
4. When switching to USB mode, you need to insert a USB flash drive containing music files in the back panel of the device to play.
5. When you want to switch to the BT (Bluetooth) mode, you need to turn on your other devices (TV, cell phone, etc.) for Bluetooth pairing.

NOTE: When you switch the connection mode, the corresponding mode information is displayed on the front of the soundbar.

## Bluetooth Play

### Bluetooth Play Manuals:

This soundbar has built-in V5.0 Bluetooth receiver module, which supports Bluetooth connection with other external devices to play music, with an effective receiving distance of about 10 meters (depending on the surrounding environment). Due to the different manufacturers, models and software versions of devices on the market, it is impossible to guarantee that this soundbar is compatible with all external Bluetooth devices.

## Some notes about Bluetooth pairing

1. Before using this soundbar with external devices (such as TV, mobile phone, tablet, etc.), it must be connected to the soundbar via BT pairing.
2. Make sure the external devices (such as TV, mobile phone, tablet, etc.) with Bluetooth function and turn it on.
3. When the soundbar is turned on and switched to Bluetooth mode, the word "BT" on the LED display will flash.  
And when the word "BT" stops flashing, it means the pairing is successful.
4. Refer to "page 8 and 9" for connecting TV and mobile phone via Bluetooth connecting

Note: If the soundbar is connected to a mobile phone via Bluetooth to play music, when playing music, the phone receiving an incoming call, the soundbar will pause to play music, and the phone call sound is not played through the soundbar. After the call is over the soundbar will automatically continue to play music.

## Troubleshooting

If a malfunction occurs, check the following points before sending the device for repair. Due to the risk of electric shock when servicing this unit, users should not open the soundbar to view the internal structure. If you cannot solve the problem by following the instructions below, please consult the dealer or service center.

Warning: Under no circumstances should you attempt to repair the equipment yourself, as this will void the warranty.

malfunction	possible cause	solution
The soundbar has no sound output	The device is not connected to the soundbar	1) Check if the connection cable is damaged, or the jack is loose. 2) Check whether the soundbar is switched to the right input source
	The volume is too low	Increase the volume of the soundbar
		Increase the volume of the audio source
	Mute function is turned on	Press the mute button to turn off the mute function
The device plays via Bluetooth, no sound from soundbar Output	The device cannot pair with the soundbar	Check if the audio source supports A2DP norm
	Other devices have been connected to the soundbar via BT	Check if other devices are already connected to the soundbar via Bluetooth.
	Bluetooth version is not supported	Use other playback units
The soundbar occurs stuck issue or in snatches when playing via Bluetooth	Bluetooth device is out of signal receiving distance	Move the Bluetooth device to the distance where the Bluetooth signal from the soundbar can be received. (No obstructions within 10 meters)
The remote control does not operate properly	Low battery	replace a new battery
When playing via USB, the soundbar has no sound	This USB format is not compatible with the soundbar	Replace other USB driver

## Technical Specification

- Main engine power input.....DC24V2A~50-60Hz
- Rated power.....60Wrms, 120Wpeak
- Standby power consumption.....≤ 0.5W
- Remote Control Battery.....3V2 x AAA/R03
- Remote control distance .....10 meters(angle≤30°)
- Output Power.....15Wx2+30W
- Full range.....2 x 2" 8 Ohm 15W
- Woofer.....2 x 2.5" 8 Ohm 15W
- Frequency response.....50Hz-20KHz
- Product size .....900 x 92 x 70 mm

## Bluetooth

- Bluetooth version ..... V5.0
- Transmitting range ..... 10 Meters
- Transmitting frequency ..... 2.4 GHz
- Audio transmission protocol ..... A2DP 1.2
- Bluetooth matching name ..... LSP-902(C)

Dolby, **Dolby Atmos**, and the double-D symbol are registered trademarks of Dolby Laboratories Licensing Corporation. Manufactured under license from Dolby Laboratories. Confidential unpublished works. Copyright 2012-2021 Dolby Laboratories. All rights reserved.

## FCC STATEMENT

### Main engine power input

NOTE: This equipment has been tested and found to comply with the limits for a Class B digital device, pursuant to part 15 of the FCC Rules. These limits are designed to provide reasonable protection against harmful interference in a residential installation. This equipment generates, uses and can radiate radio frequency energy and, if not installed and used in accordance with the instructions, may cause harmful interference to radio communications. However, there is no guarantee that interference will not occur in a particular installation. If this equipment does cause harmful interference to radio or television reception, which can be determined by turning the equipment off and on, the user is encouraged to try to correct the interference by one or more of the following measures:

- Reorient or relocate the receiving antenna.
- Increase the separation between the equipment and receiver.
- Connect the equipment into an outlet on a circuit different from that to which the receiver is connected.
- Consult the dealer or an experienced radio/TV technician for help.

Warning: Changes or modifications not expressly approved by the party responsible for compliance could void the user's authority to operate the equipment.

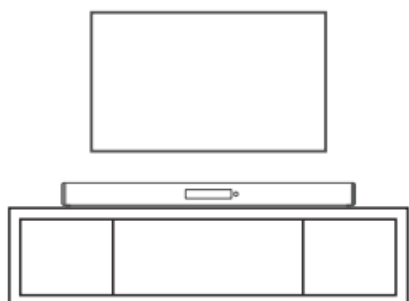
This device complies with part 15 of the FCC Rules. Operation is subject to the following two conditions: (1) This device may not cause harmful interference, and (2) this device must accept any interference received, including interference that may cause undesired operation.

The distance between user and device should be no less than 20cm

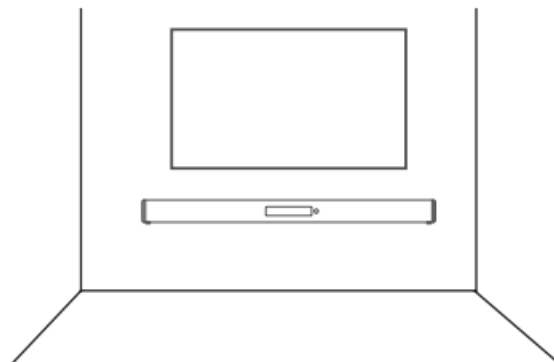
## Product installation instructions

### Product installation method

Place the soundbar on the TV cabinet (A)

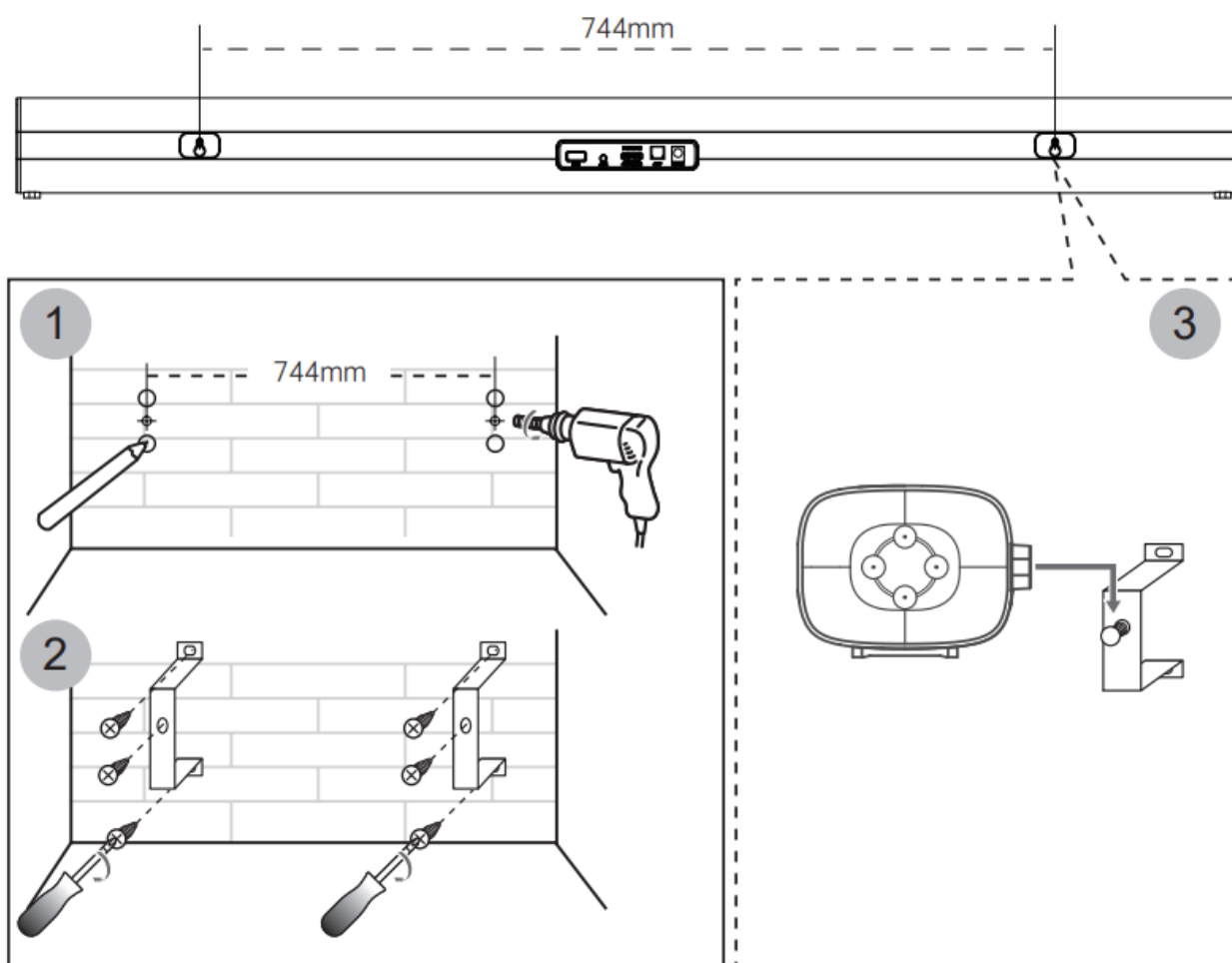


A



B

Hang the soundbar on the TV wall (B)



## Documents / Resources

	<p><a href="#">global sources LSP902C High Quality 2.1CH 60W Soundbar</a> [pdf] User Guide LSP902C High Quality 2.1CH 60W Soundbar, LSP902C, High Quality 2.1CH 60W Soundbar, Quality 2.1CH 60W Soundbar, 2.1CH 60W Soundbar, Soundbar</p>
---	--

## References

- [User Manual](#)

**Manuals+.** [Privacy Policy](#)

This website is an independent publication and is neither affiliated with nor endorsed by any of the trademark owners. The "Bluetooth®" word mark and logos are registered trademarks owned by Bluetooth SIG, Inc. The "Wi-Fi®" word mark and logos are registered trademarks owned by the Wi-Fi Alliance. Any use of these marks on this website does not imply any affiliation with or endorsement.