



## global sources J50 Bluetooth Receiver User Manual

[Home](#) » [global sources](#) » global sources J50 Bluetooth Receiver User Manual 

global sources J50 Bluetooth Receiver User Manual

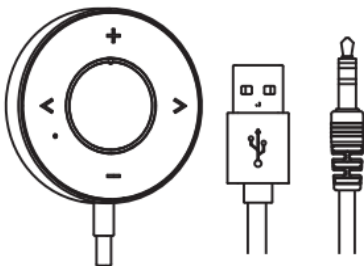


## Contents

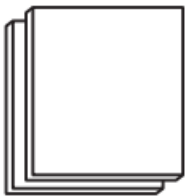
- 1 Packing List
- 2 Product Diagram
- 3 Fixed Method
- 4 Pairing Operation
- 5 Operation Instructions
- 6 Indicator instructions
- 7 Prompt tone instructions
- 8 Why can't the receiver be connected?
- 9 Why doesn't it play sound after connecting Bluetooth?
- 10 Why is the sound of the receiver too low?
- 11 Why can't the receiver be turned on when connected with power?
  - 11.1 FCC Compliance Statement:
  - 11.2 Documents / Resources
    - 11.2.1 References
  - 11.3 Related Posts

## Packing List

- Bluetooth Receiver\*1



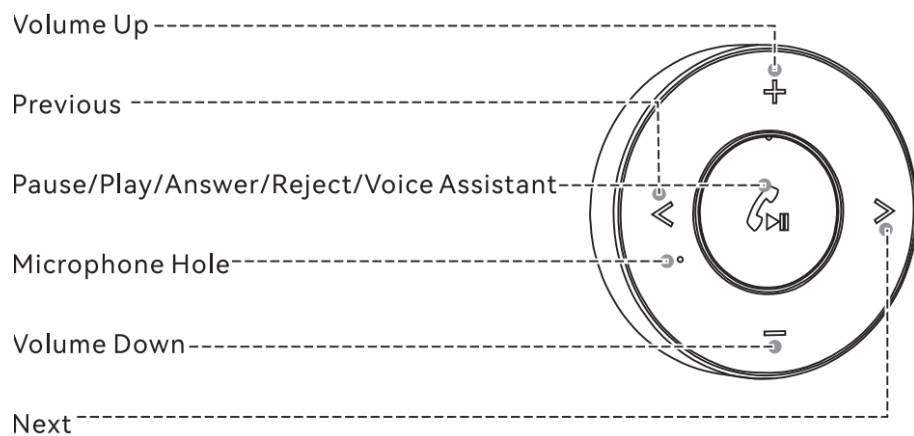
- 3M Film 2



- Manual 1

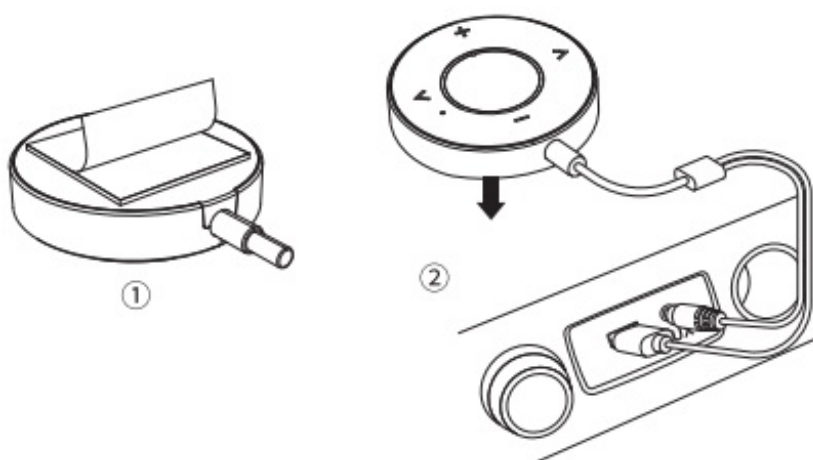


## Product Diagram

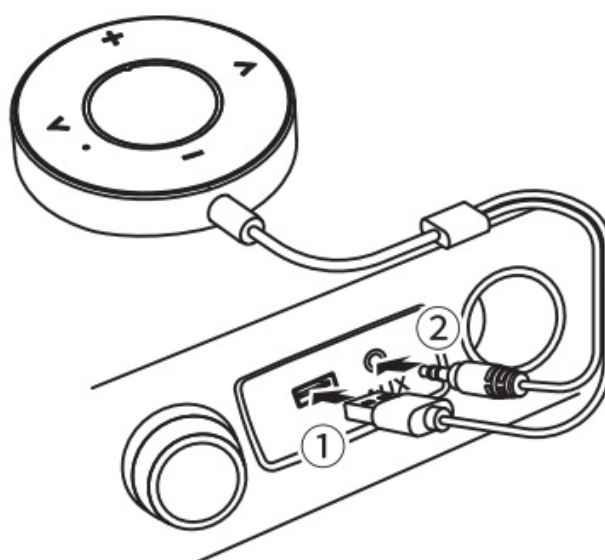


## Fixed Method

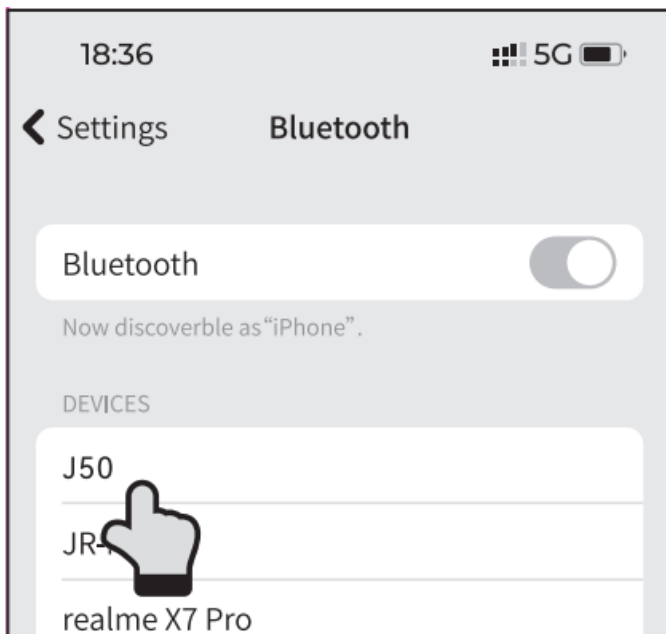
1. Remove the protective film.
2. Stick the Bluetooth receiver on the dashboard.



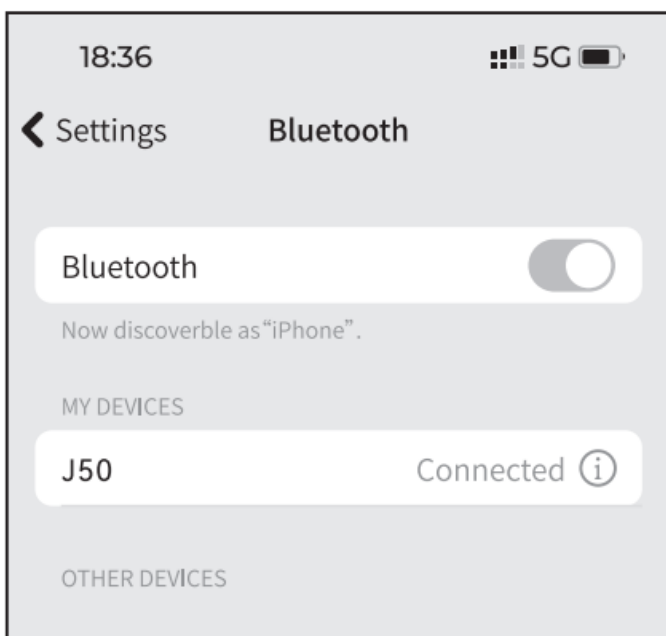
## Pairing Operation



1. Insert the USB connector of the receiver into a power supply, the light ring will light up which means the receiver is turned on.
2. Plug the 3.5mm audio cable of the receiver into the 3.5mm AUX port of the car audio system.
3. Turn the phone's Bluetooth function on, search for the Bluetooth device "J50", click to pair and connect with it.



4. After connecting successfully, you can start to use the receiver to enjoy music or answer calls.



## Operation Instructions

### 1. Music function

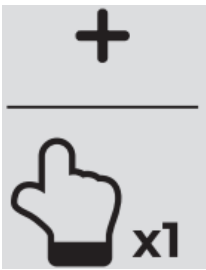
#### Play/Pause:

Click the play/pause button



#### Volume Up:

Click/Long Press the volume up button



**Volume Down:**

Click/Long Press the volume down button



**Previous:**

Click the previous button

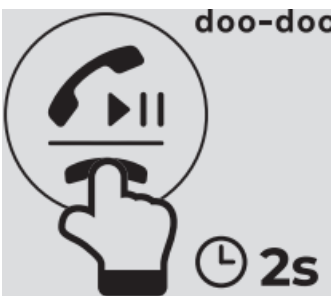


**Next:**

Click the next button



**2. Voice assistant**



Press and hold the call button for 2s, and then release after hearing a “doo-doo-doo-doo” sound

**3. Call function**

**Answer Call:**

Click the call button

**End Call:**

Click the call button

**Reject Call:**

Press and hold the call button for 2s

**Redial Last Number:**

Double-click the call button

**4. Factory reset****Restore Factory Settings:**

Under turned on status, press and hold the "+" and "-" buttons simultaneously for 5s

**Indicator instructions**

**Ready for Pairing:** The light ring flashes slowly in breathing mode

**Pairing Successfully:** The light ring keeps on

**Turn Lights On/Off:** Press and hold the “Next” button for 3 seconds. to manually turn off/on the lights

**Restore Factory Settings:** LED stays on for 1S and then turns to breathe

## **Prompt tone instructions**

**Volume Up:** Raise it to the loudest and it will “doo-doo”

**Volume Down:** Reduce the volume to the maximum and it will “doo-doo”

**Connected:** “doo” sound

**Restore Factory Settings:** “doo-doo-doo-doo”

**Activate Voice Assistant:** “doo-doo-doo-doo”

---

**Why can't the receiver be connected?**

---

**Why doesn't it play sound after connecting Bluetooth?**

Please try switching the AUX button on the car.

---

**Why is the sound of the receiver too low?**

---

**Why can't the receiver be turned on when connected with power?**

A:The USB charging port and cable may not be connected properly, please pull the cable out and plug it in again repeatedly to make sure it is well inserted. Please use adapters or car chargers that conform to national/ regional safety standards to supply power for the product. Adapters with excessive power may be incompatible. ③ The product does not support PD protocol, when using PD power adapters to supply power for the product, it may be incompatible.

## **FCC Compliance Statement:**

Changes or modifications not expressly approved by the party responsible for compliance could void the user's authority to operate the equipment. This equipment has been tested and found to comply with the limits for a Class B digital device, pursuant to Part 15 of the FCC Rules. These limits are designed to provide reasonable protection against harmful interference in a residential installation. This equipment generates, uses and can radiate radio frequency energy and, if not installed and used in accordance with the instructions, may cause harmful interference to radio communications. However, there is no guarantee that interference will not occur in a particular installation. If this equipment does cause harmful interference to radio or television reception, which can be determined by turning the equipment off and on, the user is encouraged to try to correct the interference by one or more of the following measures:

- Reorient or relocate the receiving antenna.
- Increase the separation between the equipment and receiver.
- Connect the equipment into an outlet on a circuit different from that to which the receiver is connected.
- Consult the dealer or an experienced radio/TV technician for help.

---

## Documents / Resources



[global sources J50 Bluetooth Receiver](#) [pdf] User Manual  
J50, 102015271, J50 Bluetooth Receiver, Bluetooth Receiver, Receiver

## References

- [User Manual](#)

### Manuals+, Privacy Policy

This website is an independent publication and is neither affiliated with nor endorsed by any of the trademark owners. The "Bluetooth®" word mark and logos are registered trademarks owned by Bluetooth SIG, Inc. The "Wi-Fi®" word mark and logos are registered trademarks owned by the Wi-Fi Alliance. Any use of these marks on this website does not imply any affiliation with or endorsement.