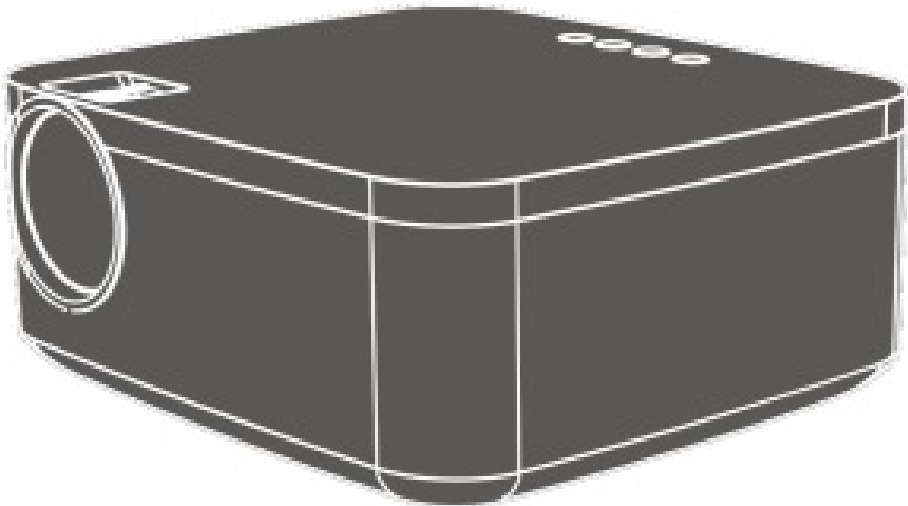




global sources H1 1080P Projector User Guide

[Home](#) » [global sources](#) » global sources H1 1080P Projector User Guide 

User guide

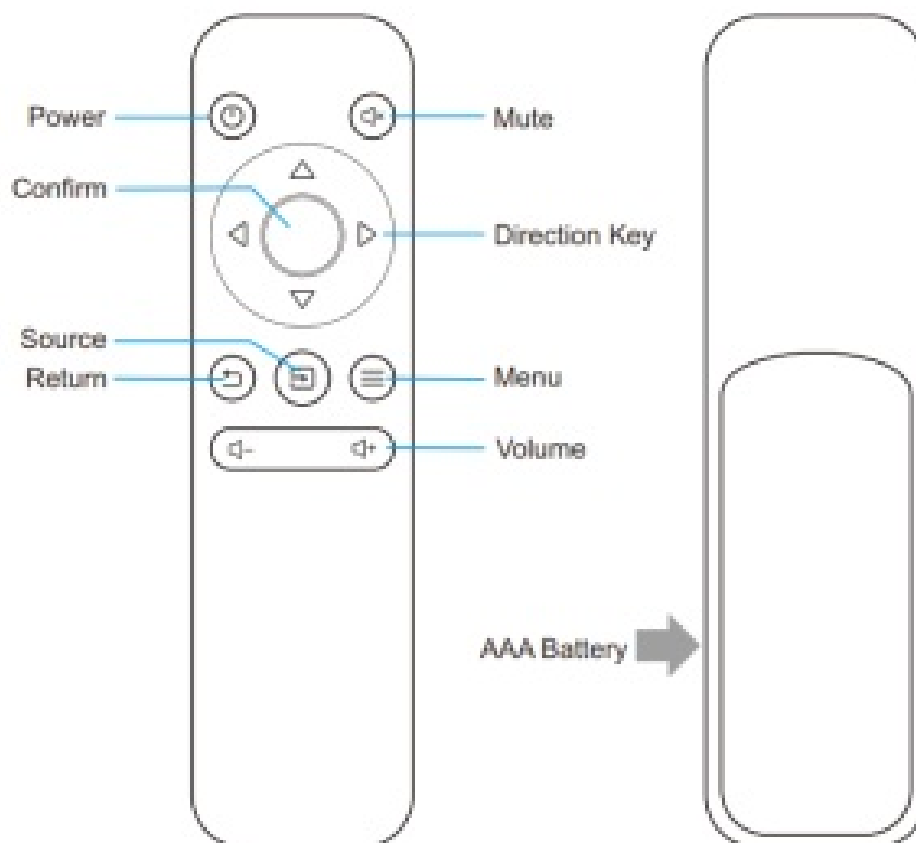


1080P Projector

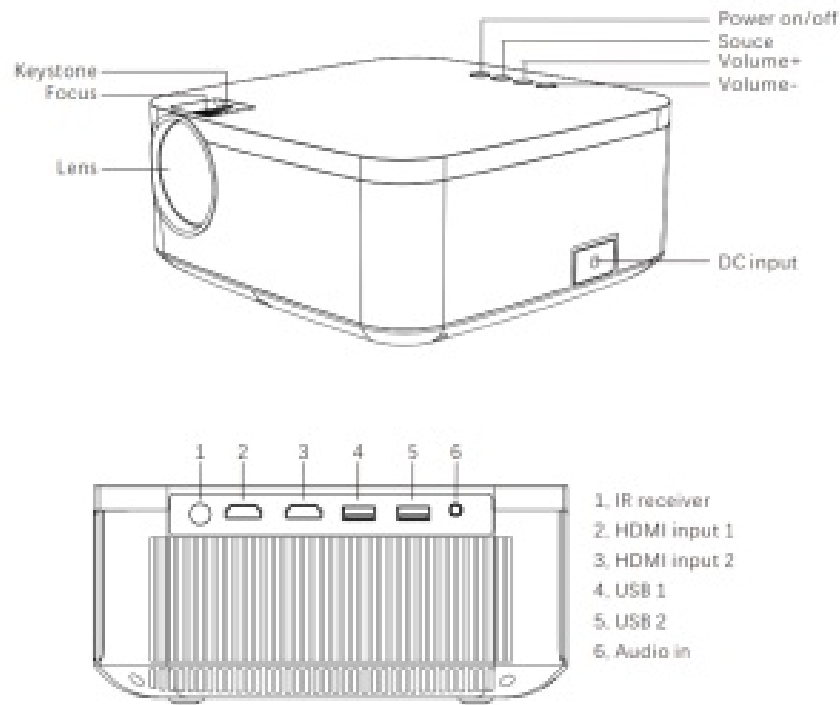
Contents

- 1 REMOTE CONTROL
- 2 LOCATION OF PARTS AND CONTROLS
- 3 HDMI Connection to iPhone/iPad
- 4 HDMI Connection to Macbook
- 5 HDMI Connection to Android Devices
- 6 HDMI Connection to Streaming Sticks
- 7 HDMI Connection to Laptop
- 8 Multi-media Play
- 9 Supported format
- 10 Wireless Connection to Android Devices
- 11 Wireless Connection to Apple Devices
- 12 Connect to the network
- 13 OTA upgrading
- 14 Documents / Resources
- 15 Related Posts

REMOTE CONTROL

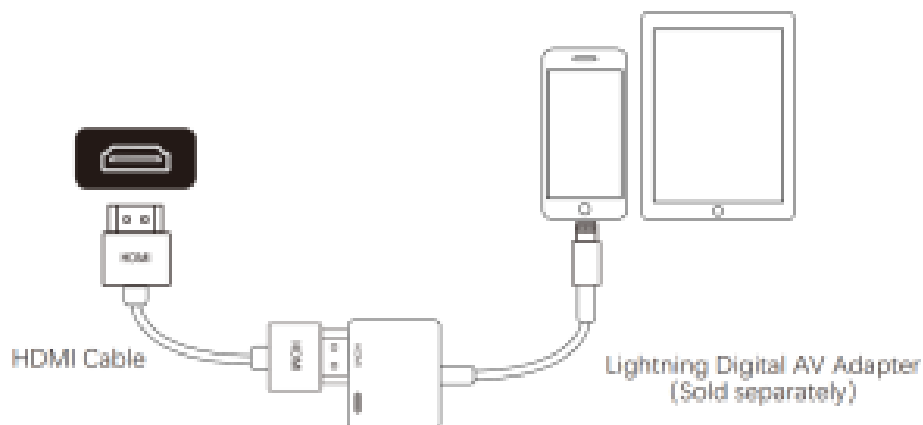


LOCATION OF PARTS AND CONTROLS



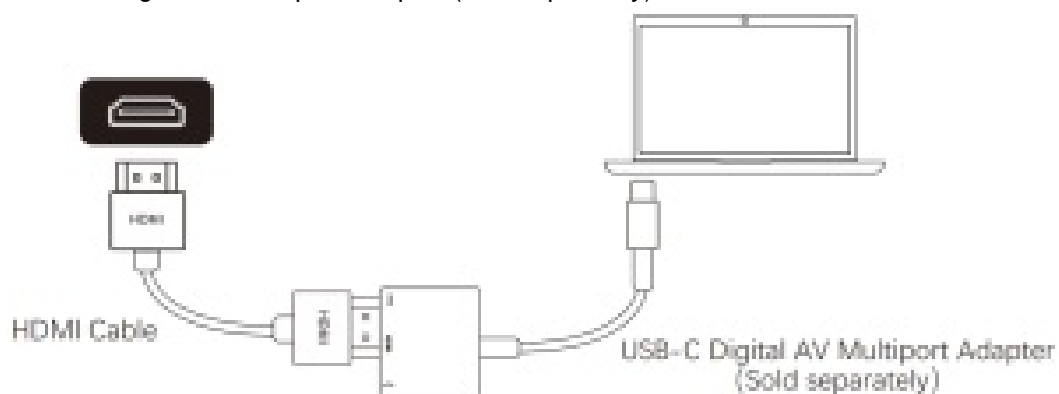
HDMI Connection to iPhone/iPad

You will need an Apple Digital AV Adapter (sold separately) and a HDMI cable.



HDMI Connection to Macbook

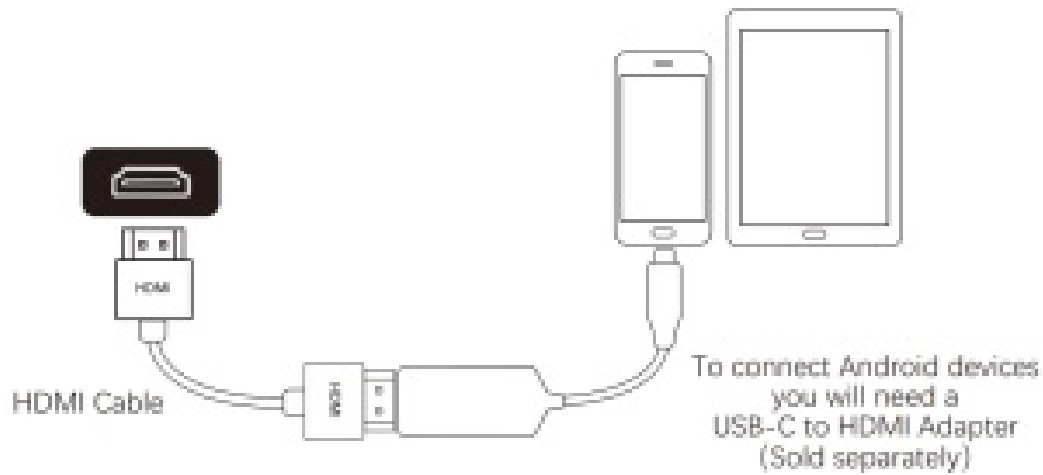
You will need USB-C Digital AV Multiport Adapter (sold separately) and a HDMI cable.



HDMI Connection to Android Devices

You will need an USB-C to HDMI Adapter (sold separately) and a HDMI cable.

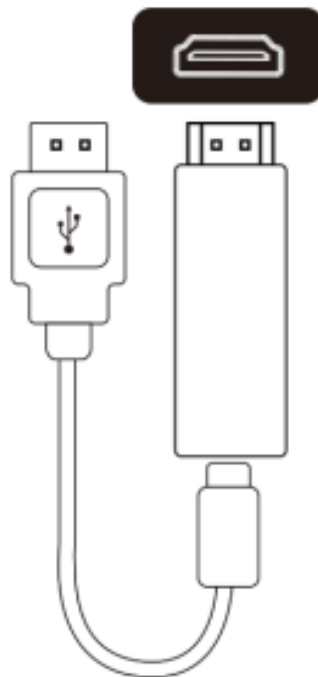
Note: Make sure your android device support video output.



HDMI Connection to Streaming Sticks

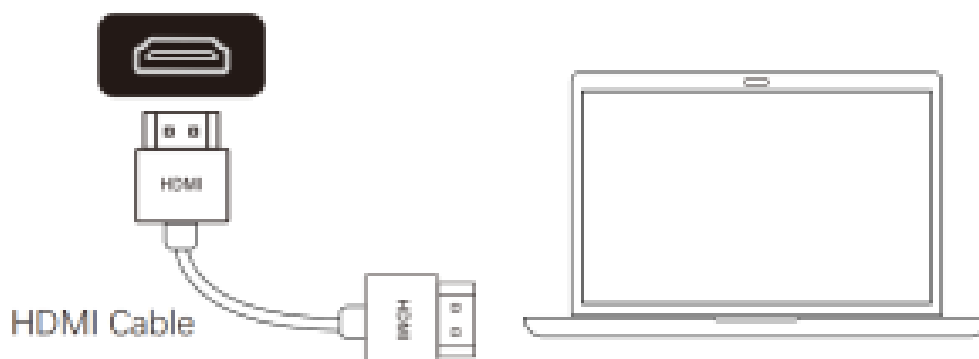
Simply plug the FireTV, Roku TV, Chromecast or other streaming sticks to the projector. the projector can provide 5V/1A power to the stick.

Note: Some streaming sticks need their own power.



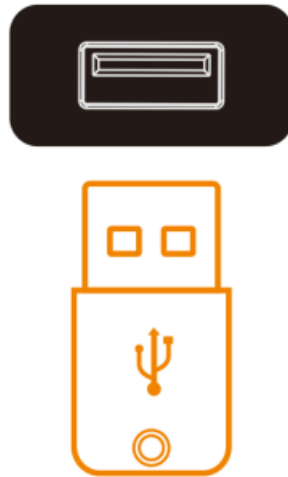
HDMI Connection to Laptop

Connect to the laptop directly with a HDMI cable.



Multi-media Play

The projector can read the videos and images from USB or Micro SD directly.



Supported format

Video: mp4,avi,mov,wmv,mkv,rm,rmvb, mpg, mpeg
1080P@30fps, 720P@60fps

Image: JPG 15360 x 8640 Up to 1024×768 for progressive format
PNG, 9600 x 6400 (Up to 1200×800 for interlace format)

Wireless Connection to Android Devices

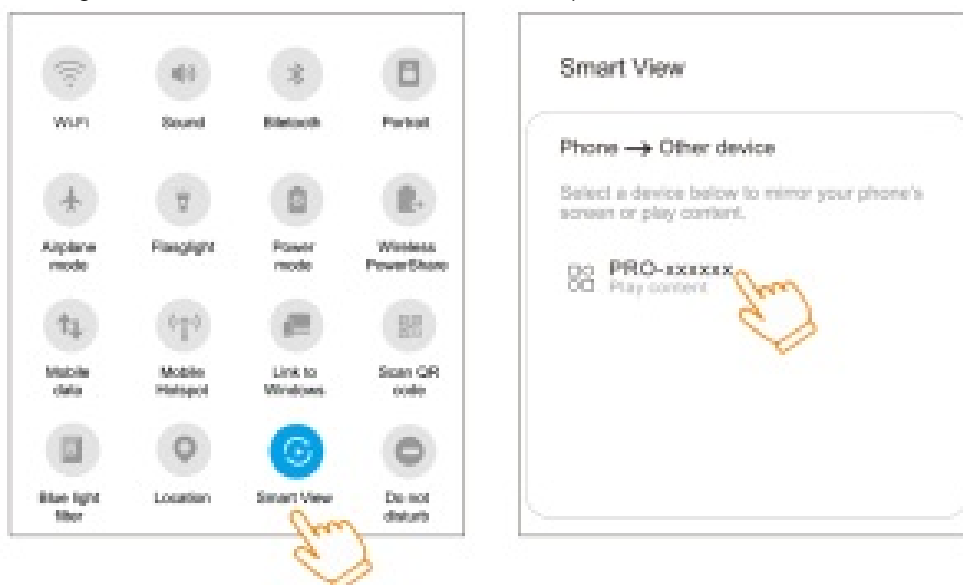
To connect your Android device to the projector by Smart view/Miracast

Steps 1: Turn on the projector and enter the wireless page.

Steps 2: Open the quick menu of Android device, and active Smart view/Miracast.

Steps 3: The Projector named PRO-xxxxxx, find and connect it.

Note: You may need to check with your android device manufacturer to verify that your Android device supports video out..(In Samsung device, this function named Smart view)



Wireless Connection to Apple Devices

To connect your Apple device to the projector by Screen mirroring/Airplay.

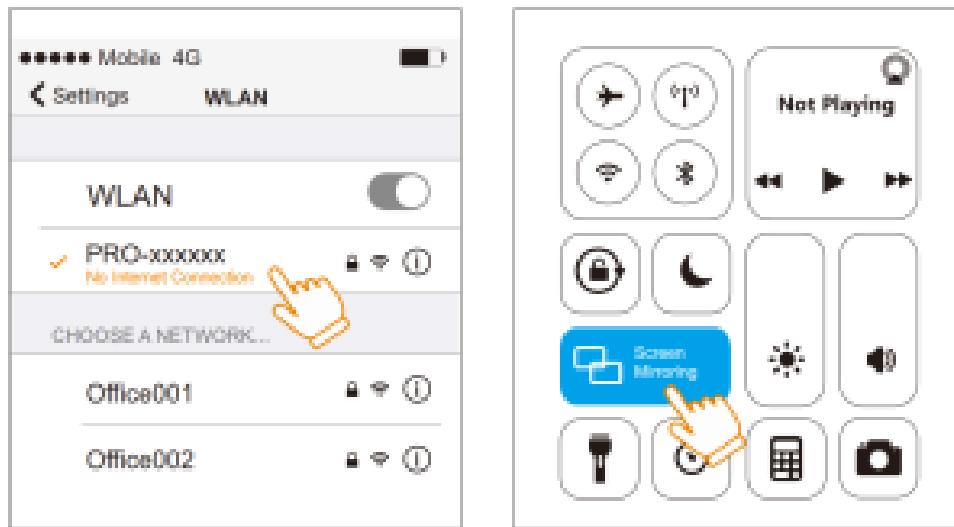
Steps 1: Turn on the projector and enter the wireless page, you will see the device name and password in the

upper left corner.

Steps 2: Set the Wi-Fi of your Apple device to connect to the projector.

Steps 3: Open the quick menu of Apple device to active the screen mirroring, to look for the projector and connect it.

Note: If the projector and Apple device are connected to the same network, screen mirroring can also work. Some Streaming apps don't allow video output, such as Netflix.



Connect to the network

Before upgrading or connecting to an Apple device via Wi-Fi network, you need to connect the projector to the network first..

Steps 1: Turn on the projector and enter the wireless page, you will see the device name and password in the upper left corner.

Steps 2: Set the Wi-Fi of your mobile device to connect to the projector.

Steps 3: Open the web browser of your device and log on the URL 192.168.49.1 Set the projector to connect to the network. there will be a router icon in the upper right corner if connected to the network successfully.

OTA upgrading

Check the new URL 192.168.xxx.xxx in the projected screen, log on in your mobile device, then you can see the 'upgrade' button and do the OTA upgrading.



Documents / Resources



[global sources H1 1080P Projector](#) [pdf] User Guide
H1 1080P, Projector

