



global sources G9300+i886 Wireless Mouse and Keyboard Combo User Manual

[Home](#) » [global sources](#) » global sources G9300+i886 Wireless Mouse and Keyboard Combo User Manual 

Contents

- [1 global sources G9300+i886 Wireless Mouse and Keyboard Combo](#)
- [2 Product Information](#)
- [3 PACKAGE CONTENTS](#)
- [4 Features](#)
- [5 Specification](#)
- [6 Troubleshooting](#)
- [7 FCC Statement](#)
- [8 Documents / Resources](#)
- [9 Related Posts](#)

global  sources

global sources G9300+i886 Wireless Mouse and Keyboard Combo



Product Information

The product is an electronic device that requires approval from the manufacturer for any changes or modifications. Failure to comply with this caution could result in voiding the user's authority to operate the equipment.

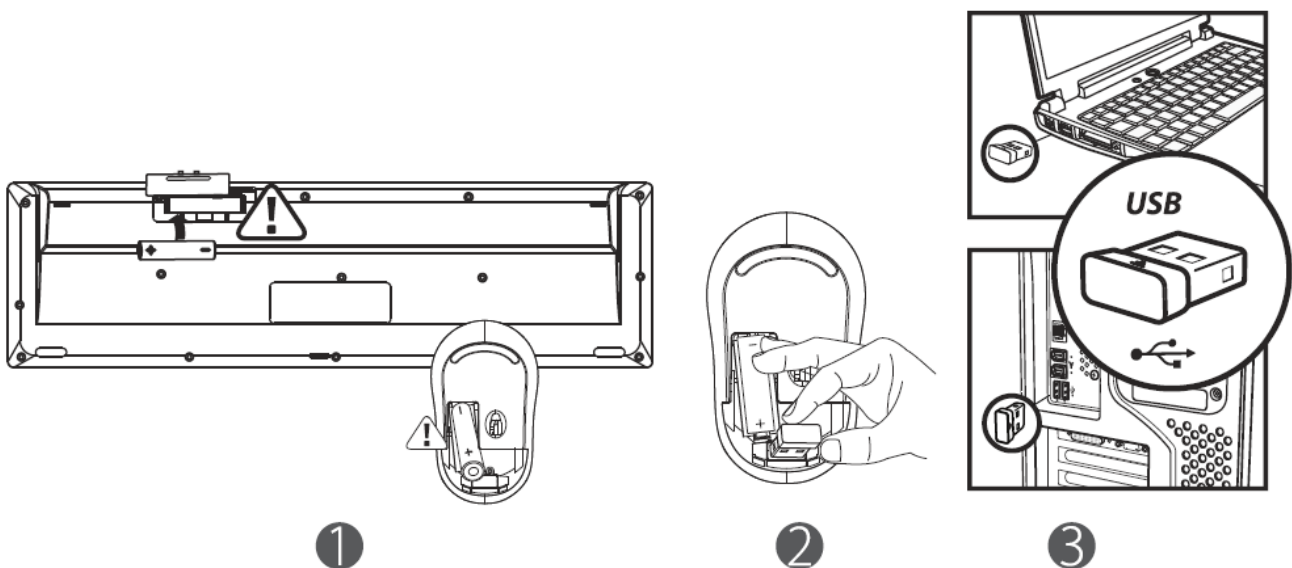
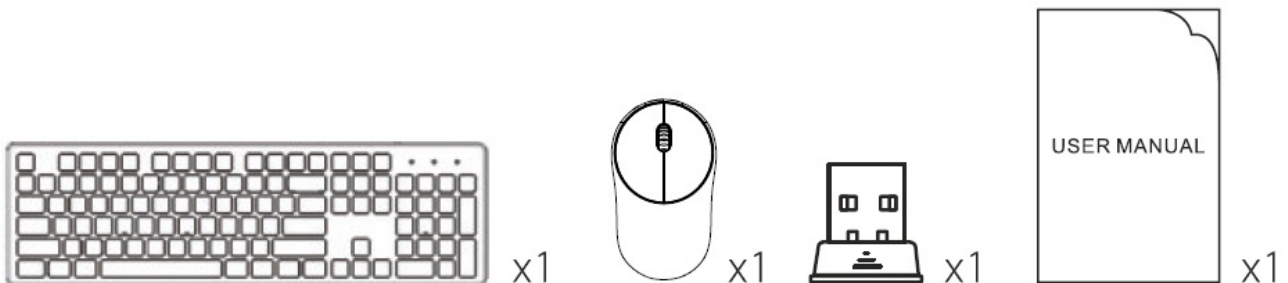
Product Usage Instructions

It is important to note that if there is no operation for 15 minutes, the device will automatically shut off. To continue using the device, simply turn it back on.

When using the device, be cautious of making any changes or modifications without explicit approval from the manufacturer.

Doing so could result in voiding your authority to operate the equipment.

PACKAGE CONTENTS



Usage

Remove the battery cover under keyboard and insert one AAA battery. Plug the receiver into the USB port of computer. Please wait for about 3s and the drive will install automatically for your usage.

Features

- **Connection:** Connect computer with wireless USB receiver.
- **Transmission:** 2.4 GHz wireless stable transmission.
- Effective connecting distance: 15m.
- Extra-large fashion chocolate keycap, with a little sunken, bring you better hand feeling.
- **Drainage outlet in the bottom:** Water can flow away from keyboard easily to prevent damage.
- **Compatibility:** Windows2000/ME/XP//7/8/10, VISTA and Mac Pair with a mute three-button mouse, with 1600 DPI and 250Hz return rate. Ultra-thin design bring you comfortable hand feeling, which can be used by right or left hand and easy to carry.
- **Power-saving design:** If no operation for 15 minutes, the mouse will be in sleep mode automatically to save energy. Press any button to wake it up. The battery's life may last maximally for 24 months.

Notes:

1. The indicators are off when the keyboard is out of work.
2. When you press NUM, the light "" will light up and light out after 3 seconds.
3. When you switch CAPSLK, the light "A" will light up and light out after 3 seconds.
4. If it is out of power, the low-battery indicator will flash and remind you to change another battery.
12 multimedia kevs(Mac OS does not support multimedia keys.)

Fn+F1	Fn+F2	Fn+F3	Fn+F4	Fn+F5	Fn+F6
Media player	Decrease volume	Increase volume	Mute	Previous track	Next track
Fn+F7	Fn+F8	Fn+F9	Fn+F10	Fn+F11	Fn+F12
Play/pause	Stop	Homepage	Email	My computer	Favorites

Specification

Keyboard:

- **Working voltage:**1.5V
- **Working current:**3mA
- **Standby current:** < 0.03mA
- **Lifespan of button:** ≥10,000,000 times
- **Size:** 440*129*27mm

Mouse

- **Working voltage:**1.5V
- **Working current:** 11 mA

- **Standby current:** 1.3mA
- **Sleep current:** 30uA
- **Lifespan of button:** ≥3,000,000 times
- **Size:** 106*62*40mm

Troubleshooting

After installing a battery, keyboard will enter the code mode when pressing “ESC” and “+/=” at the same time. (Low-battery indicator is on.) Plug USB receiver into computer within 20s in this mode to match code. LED indicator will go off if it is matched successfully.

FCC Statement

Operation is subject to the following two conditions:

1. This device may not cause harmful interference, and
2. This device must accept any interference received, including interference that may cause undesired operation.
3. This device has been evaluated to meet general RF exposure requirement. The device can be used in portable exposure condition without restriction.


Note:

This equipment has been tested and found to comply with the limits for a Class B digital device, pursuant to part 15 of the FCC Rules. These limits are designed to provide reasonable protection against harmful interference in a residential installation. This equipment generates, uses and can radiate radio frequency energy and, if not installed and used in accordance with the instructions, may cause harmful interference to radio communications. However, there is no guarantee that interference will not occur in a particular installation. If this equipment does cause harmful interference to radio or television reception, which can be determined by turning the equipment off and on, the user is encouraged to try to correct the interference by one or more of the following measures.

- Reorient or relocate the receiving antenna.
- Increase the separation between the equipment and receiver.
- Connect the equipment into an outlet on a circuit different from that to which the receiver is connected.
- Consult the dealer or an experienced radio/TV technician for help.

Caution: Any changes or modifications to this device not explicitly approved by manufacturer could void your authority to operate this equipment.

Documents / Resources

	<p>global sources G9300+i886 Wireless Mouse and Keyboard Combo [pdf] User Manual 2BAKP-ZX-K301, 2BAKPZXK301, zx k301, G9300 i886, Wireless Mouse and Keyboard Combo, G9300 i886 Wireless Mouse and Keyboard Combo, Mouse and Keyboard Combo</p>
---	---