

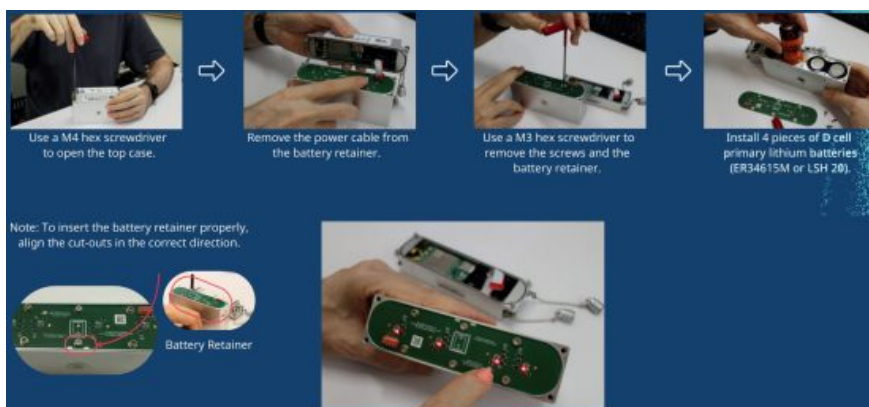


QUICK START GUIDE

Contents [[hide](#)]

- 1 [STEP 1 INSTALL THE BATTERY](#)
- 2 [STEP 2 INSTALL SIM & POWER ON](#)
- 3 [STEP 3 HOW TO CONFIGURE YOUR DATA NEED](#)
- 4 [Documents / Resources](#)
 - 4.1 [References](#)

STEP 1 INSTALL THE BATTERY

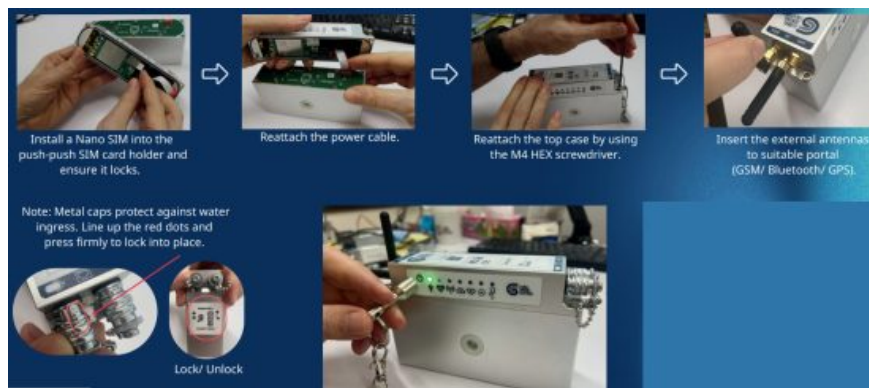


To CHECK THE BATTERY WORKS,

Press and hold the button for 2 seconds.

When all four lights are illuminated, the batteries are supplying power.

STEP 2 INSTALL SIM & POWER ON



TO TURN ON YOUR DEVICE,

Position the magnet close to the On/Off position to start the device, with green lights indicating activation.

Need help with the SIM installation? Scan this QR code to watch the video tutorial.



<https://youtu.be/8g-TmhBrMuU>

STEP 3 HOW TO CONFIGURE YOUR DATA NEED



DATA YOU WANT...

WHERE YOU WANT IT. HOW YOU WANT IT. WHEN YOU WANT IT.



Supported device types include vibration monitors, tilt meters, sound meters and data loggers.

It allows you to continuously log, communicate, process, and provide scheduled or real-time data visibility and comprehensive reporting.



Need More Help?

Full Quick Start Guide



<https://youtu.be/w3ug3522lmQ>

Customer Portal Login




<https://www.globalsensingsolutions.com/downloads-page/>

GLOBAL SENSING SOLUTIONS LIMITED | Email: info@globalsensingsolutions.com

www.globalsensingsolutions.com

Documents / Resources

	<p>Global Sensing Solutions BAFeFG4aD1w Cutting Edge MEMS Vibration and Tilt Monitor [pdf] User Guide</p> <p>DAGgvxe9Yxs, BAFeFG4aD1w Cutting Edge MEMS Vibration and Tilt Monitor, BAFeFG4aD1w, Cutting Edge MEMS Vibration and Tilt Monitor, MEMS Vibration and Tilt Monitor, Vibration and Tilt Monitor, Tilt Monitor, Monitor</p>
---	---

References

- [User Manual](#)

Global Sensing Solutions

BAFeFG4aD1w, BAFeFG4aD1w Cutting Edge MEMS Vibration and Tilt Monitor, Cutting Edge MEMS Vibration and Tilt Monitor, DAGgvxe9Yxs, Global Sensing Solutions, MEMS Vibration and Tilt Monitor, Monitor, Tilt Monitor, Vibration and Tilt Monitor

Leave a comment

Your email address will not be published. Required fields are marked *

Comment *

Name

Email

Website

☐ Save my name, email, and website in this browser for the next time I comment.

Post Comment

Search:

Search

[Manuals+](#) | [Upload](#) | [Deep Search](#) | [Privacy Policy](#) | [@manuals.plus](#) | [YouTube](#)

This website is an independent publication and is neither affiliated with nor endorsed by any of the trademark owners. The "Bluetooth®" word mark and logos are registered trademarks owned by Bluetooth SIG, Inc. The "Wi-Fi®" word mark and logos are registered trademarks owned by the Wi-Fi Alliance. Any use of these marks on this website does not imply any affiliation with or endorsement.