



GLIDEAWAY Motion for Bluetooth App Instructions

[Home](#) » [GLIDEAWAY](#) » GLIDEAWAY Motion for Bluetooth App Instructions 



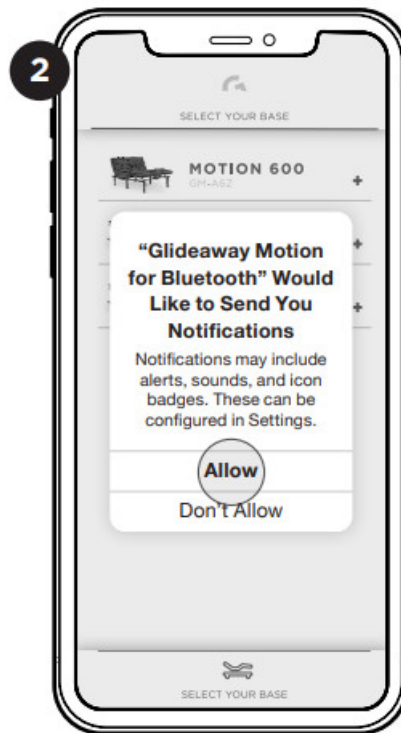
Set up your base and confirm that your base and control box is functioning properly.

Search for the “Glideaway Motion for Bluetooth” app in the Apple App Store or Google Play Store. Install and open the Glideaway Motion for Bluetooth app.

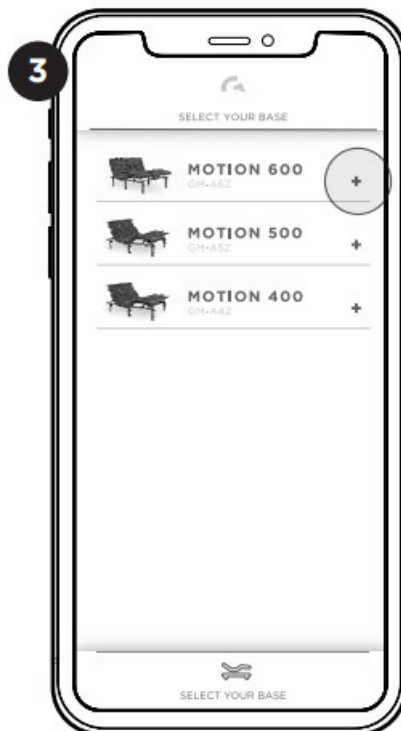


Download on Apple App Store or Google Play

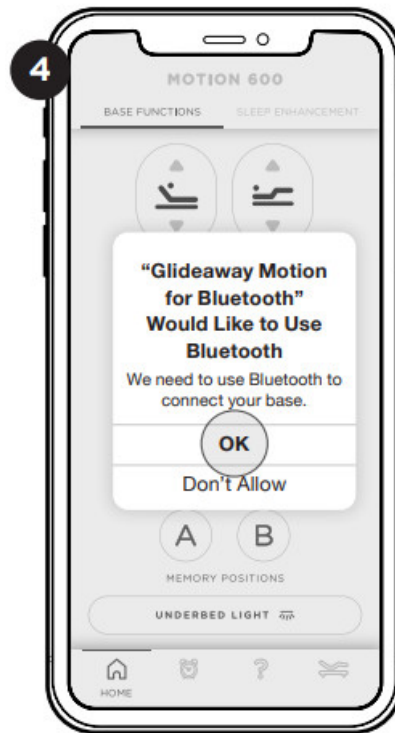




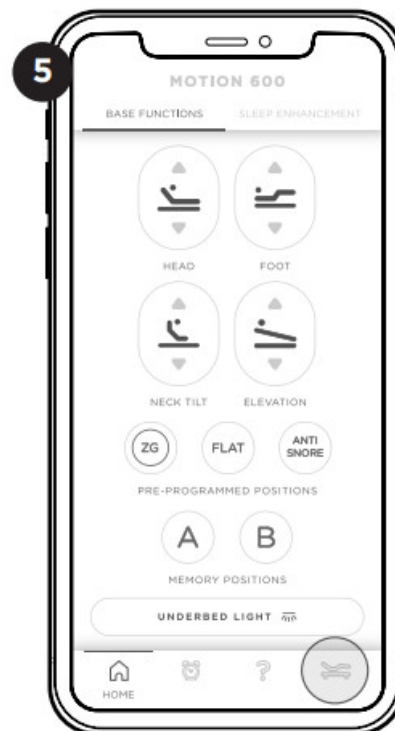
Choose to allow notifications.



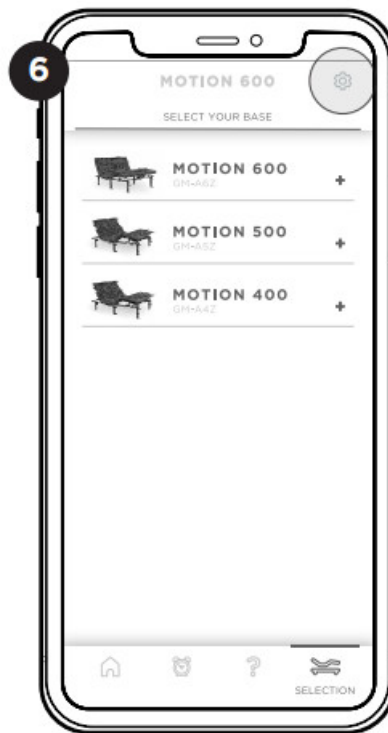
Select the model of your base.



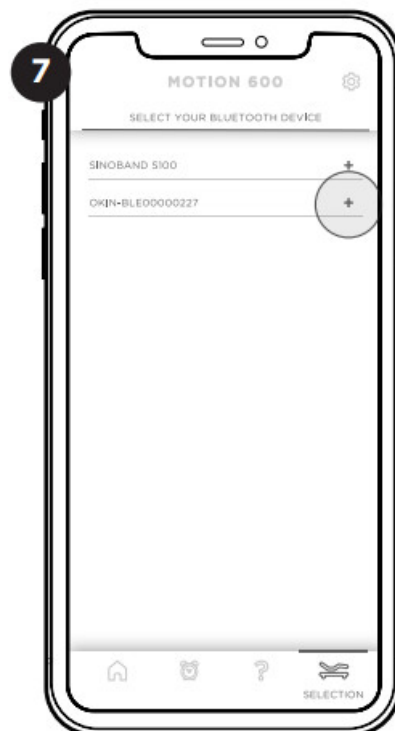
Allow Glideaway Motion for Bluetooth to use Bluetooth to connect to your base.



Tap the base icon to set up the Bluetooth module.



Tap the gear icon.



Connect to the Bluetooth module by selecting OKIN-BLEXXXXX.



Press any of the buttons on your new Bluetooth remote to activate your base.

Contents

- [1 Documents / Resources](#)
- [2 Related Posts](#)

Documents / Resources

	<p>GLIDEAWAY Motion for Bluetooth App [pdf] Instructions Motion for Bluetooth App, MOTION</p>
--	---