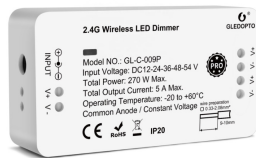


[Skip to content](#)

## Manuals+

User Manuals Simplified.



# GLEDOPTO GL-C-009P LED Dimmer Controller Pro Instruction Manual

[Home](#) » [GLEDOPTO](#) » GLEDOPTO GL-C-009P LED Dimmer Controller Pro Instruction Manual



## GLEDOPTO

GL-C-009P LED Dimmer Controller Pro  
Instruction Manual



### Contents [hide](#)

- [1 Features:](#)
- [2 Button reset](#)
- [3 Product Parameter](#)
- [4 RGB+CCT Remote Control \(GL-RC-006Z\)](#)
- [5 Compability Chart](#)
- [6 Documents / Resources](#)
- [7 Related Posts](#)

### Features:

Gateways/hubs Gledopto Zigbee products Directly work with: HUE, Amazon echo plus, smart things, Osram lightify, Homee, etc Via Hue gateway, can work with google home, all other Alexa devices

**Apps work with Hue gateway:** Hue, huge party, hue Disco,iConnectHue, Hue Widget, Light DJ, etc

**Work with Home Assistant:**

<http://bitly.ws/dELh>

**Work with Homekit:**

<http://bitly.ws/ejZY>

**Sync effect with screen bloom:**

Sync your lights with movies, music, and games, Enjoy the lighting effect which synchronizes with the plot of the picture immediately, and experience the more delicate atmosphere lighting effect.

**How to sync?**

Gledopto HDMI SYNC Box Please follow this website: <http://www.screenbloom.com/>

Sync Show Demo: [https://youtu.be/zZjtJMy\\_774](https://youtu.be/zZjtJMy_774)

**Q&A or more info, please go to :**

[www.gledopto.com](http://www.gledopto.com) or email to [sales@gledopto.com](mailto:sales@gledopto.com), or

<https://www.reddit.com/r/Gledopto/> (Not official)

Thanks for buying our products.

In this manual, we will explain the connection of wires and the connection with a ZigBee Light Link Gateway.

These devices work with many ZigBee Light Link /ZigBee 3.0 Gateways\* like Philips Hue, Amazon Echo Plus, or SmartThings.

### Wire Connection:

1. Please prepare the cable like picture P1 and strip the isolation to 9-10 mm. The cable cross-section must be between 0,33 and 2,08mm<sup>2</sup>(AWG22-14).
2. Now push down the terminal with a screwdriver and put in the cable, see picture P2.
3. Take the screwdriver away and the cable is connected to the terminal.

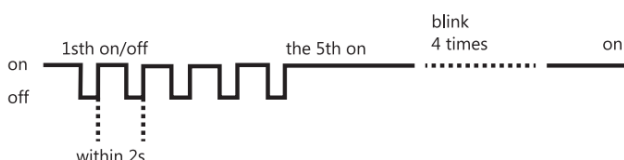
In Figure P3, an example of the connection of an LED controller is shown: – P3 for a single color LED product, use a Dimmer controller.

### Connection with Gateway:

1. Connect the LED product to the controller see section "wire connection".
2. Start the device by searching on the ZigBee Light Link/ZigBee 3.0 Gateway, it could take some time. If the Gateway does not find the device, plug power off/on or make a reset.
3. The Gateway found your device and you can assign it to the different rooms/zones/groups.
4. Now you can use the device.

### Reset:(Button reset: please see the last page.)

1. Switch on your device.
2. Now switch off and on within 2 seconds.
3. Repeat off/on five times.
4. Reset is done when the device is switched on in the fifth time and the light stays on after blinking 4 times.



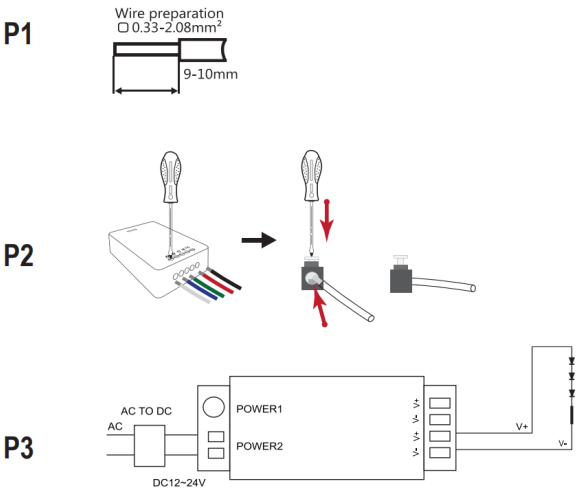
Please check the **Compatibility Chart** showing what gateways and how our products work with, this chart just shows the gateways we test, we will keep updating it . Welcome to check with our sales and website.

**LED-Trading** Tobias Ebert

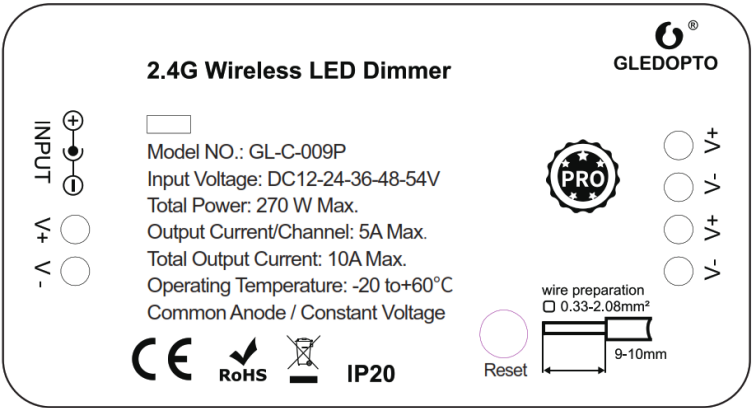
EC

REP

Schoeneicher Str. 42, Schoeneiche b. Berlin,



Germany, 15566 0049 30 641 689 17 [info@led-trading.de](mailto:info@led-trading.de)



**Button reset**

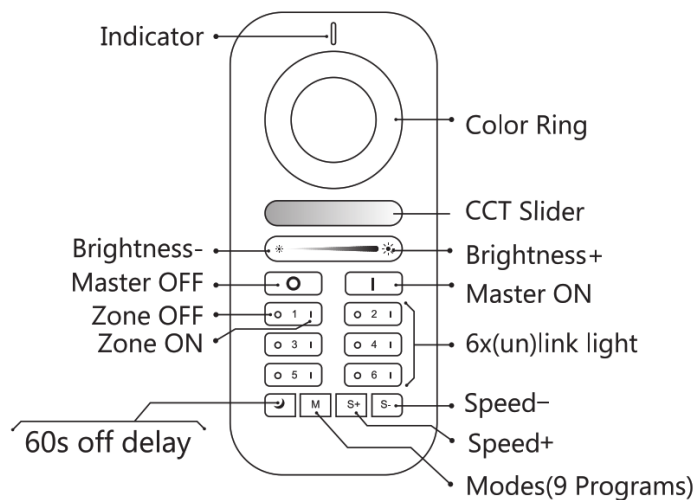
1. Short press to turn on or off
2. Long press over 2 seconds, the LED strip blinks 3 times, Reset is successful.

**Product Parameter**

Product Name	LED Dimmer Controller Pro
Model NO.	GL-C-009P
Size	23.5x48x89mm
Input Voltage	DC12-24-36-48-54 V
Protection Rate	IP20
Total Power	270 W Max
Output Current/Channel	5 A-Max
Total Output Current	10 A-Max
Operating Temperature	-20°C–60°C

**RGB+CCT Remote Control (GL-RC-006Z)**

This manual describes RGB+CCT remote control used for our RGB+CCT products. The remote control can control the LED lights in up to six different Zones, change the color, dim/brighten the lights, warm/cool white, and different programs. In this manual, you will learn.



#### How to link & use with remote control

1. Within 3 seconds after power-on, click the "on" button of the group to conduct code matching, and the LED light turns green, indicating successful code matching.
2. Long press the "off" button of the remote control to enter the night light mode, and the brightness and color can still be adjusted at this time.
3. long-press the small moon key to enter the 60 seconds delay shutdown state.
4. Long press the M key to enter automatic mode.

#### How to unlink

1. If the LED is still connected to the ZigBee gateway, long-press the "on" button on the remote control within 3 seconds after power-on or press the button for 5 times continuously, and the light will flash 3 times in the current color;
2. If the LED is not connected in the ZIGBEE gateway state, long-press the "on" button on the remote control within 3 seconds after power-on or press the button for 5 times continuously, then the LED light will be fully bright and flashing for 4 times;

#### Mode description

Mode 1: Static warm light (warm light alone)

Mode 2: Static white light (cold light and warm light are equally bright)

Mode 3: Static cold light (cold light alone)

Mode 4: Static red light

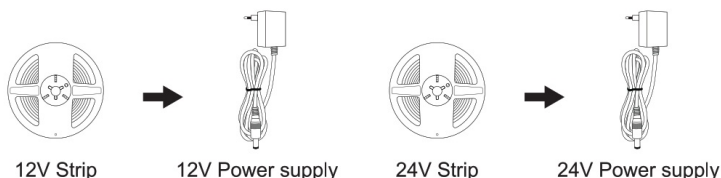
Mode 5: Static green light

Mode 6: Static blue light

Mode 7: RGB fade in fade out (Color fade in fade out from red to green, then to blue, then to red, and so on, speed adjustable.)

Mode 8: RGB flash (Color flash from red to green, then to blue, then to red, and so on, speed adjustable.)

Mode 9: Color breathing (In this mode, the brightness of the current color will cycle from 100%-0%, then from 0%-400%. At the same time, you can switch the color and have a cycle repeatedly. Pressing switch /mode button to exit this mode.)



#### Attention:

#### Compatibility Chart

Gateways Item	Philips Hue 1	Amazon Echo Plus 2	Smart Things 3	IKEA Tradfri 4	Combee 5	Tenancy 6	Homee 7	Smart Friends 8
Dimmer	Yes/Ja	Yes/Ja	Yet a	Yes/Ja	Yes/Ja	Yes/Ja	Yes/Ja	Yes/Ja



1.2. 3.4.5.6. are already tested by GLEDOPTO, SO are from our customers, just for your information, not verified by GLEDOPTO.

#### FCC Warning Statement

Changes or modifications not expressly approved by the party responsible for compliance could void the user's authority to operate the equipment. This equipment has been tested and found to comply with the limits for a Class B digital device, pursuant to Part 15 of the FCC Rules. These limits are designed to provide reasonable protection against harmful interference in a residential installation. This equipment generates uses and can radiate radio frequency energy and, if not installed and used in accordance with the instructions, may cause harmful interference to radio communications. However, there is no guarantee that interference will not occur in a particular installation. If this equipment does cause harmful interference to radio or television reception, which can be determined by turning the equipment off and on, the user is encouraged to try to correct the interference by one or more of the following measures:

- Reorient or relocate the receiving antenna.
- Increase the separation between the equipment and receiver.
- Connect the equipment into an outlet on a circuit different from that to which the receiver is connected.
- Consult the dealer or an experienced radio/TV technician for help.

#### Documents / Resources



[GLEDOPTO GL-C-009P LED Dimmer Controller Pro](#) [pdf] Instruction Manual

GL-C-009P, GLC009P, 2A6ZUGL-C-009P, 2A6ZUGLC009P, GL-C-009P LED Dimmer Controller Pro, GL-C-009P, LED Dimmer Controller Pro

#### Manuals+

- [home](#)
- [privacy](#)