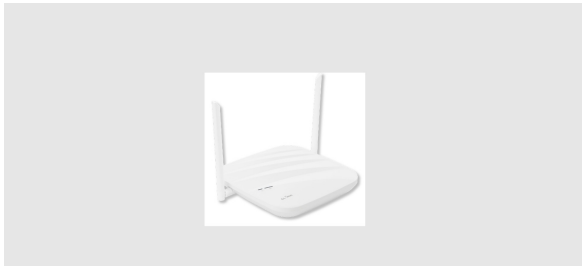


[Skip to content](#)

Manuals+

User Manuals Simplified.



GL Technologies AP1300C4 Wireless Access Point User Manual

[Home](#) » [GL Technologies](#) » GL Technologies AP1300C4 Wireless
Access Point User Manual

Contents [hide](#)

[1 GL Technologies AP1300C4 Wireless Access Point](#)

[2 SETTING Up](#)

[3 POWER SUPPLY OPTIONS](#)

[4 SUPPORT](#)

[5 WITH 4G MODULE](#)

[6 WARRANTY](#)

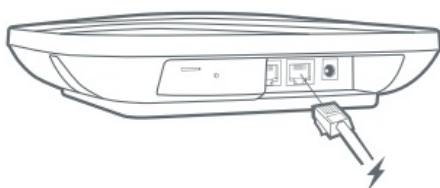
[7 FCC Rules](#)

[8 Documents / Resources](#)

[9 Related Posts](#)



GL Technologies AP1300C4 Wireless Access Point



Plug in the Ethernet cable with PoE power

SETTING Up

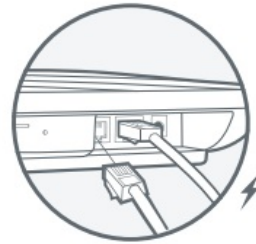
Power On

When powered up, your GL-AP1300 will broadcast two Wi-Fi signals with the sSID: GL-AP1300-xxx and GL-AP1300-xxx-56.
The POE injector should be compatible with active o passive 48V 802.3at standard.



Connect to the Wi-Fi

- Connect to the 2GHz W-Fi called
- GL-AP1300-xxx, and input the default Wi-Fi



Plug the cable connecting to your computer into LAN port



- password Goodlife, which is also printed on the bottom of the router.

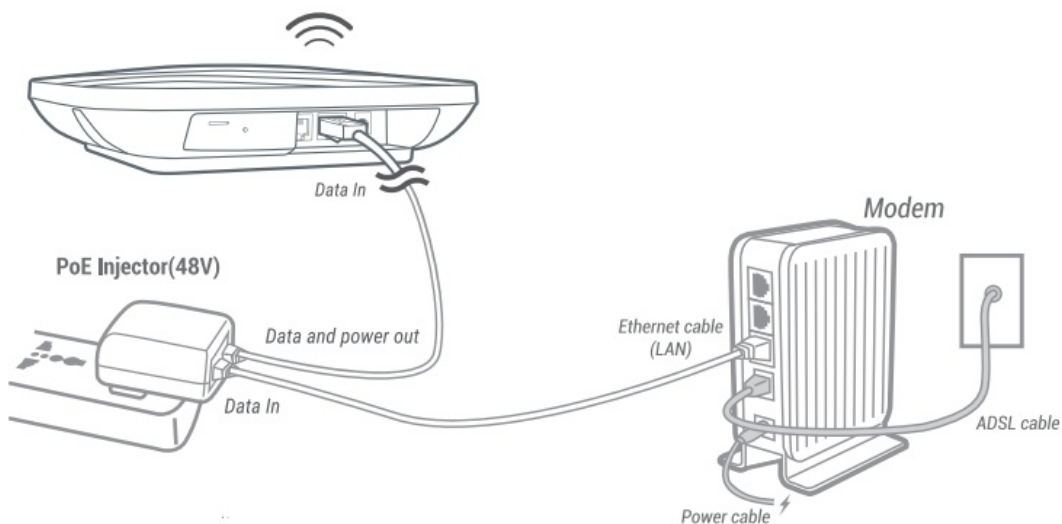
Set up Router

Visit <http://192.168.8.1> in your browser to set up your router; start by choosing your preferred language.

POWER SUPPLY OPTIONS

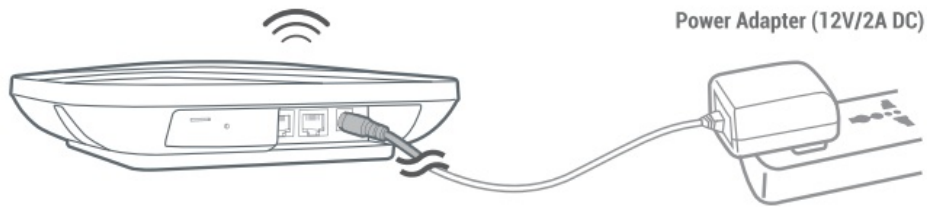
PoE power over Ethernet)

The PoE injector should be compatible with 48V 802.3at standard. PoE only works on the WAN port.

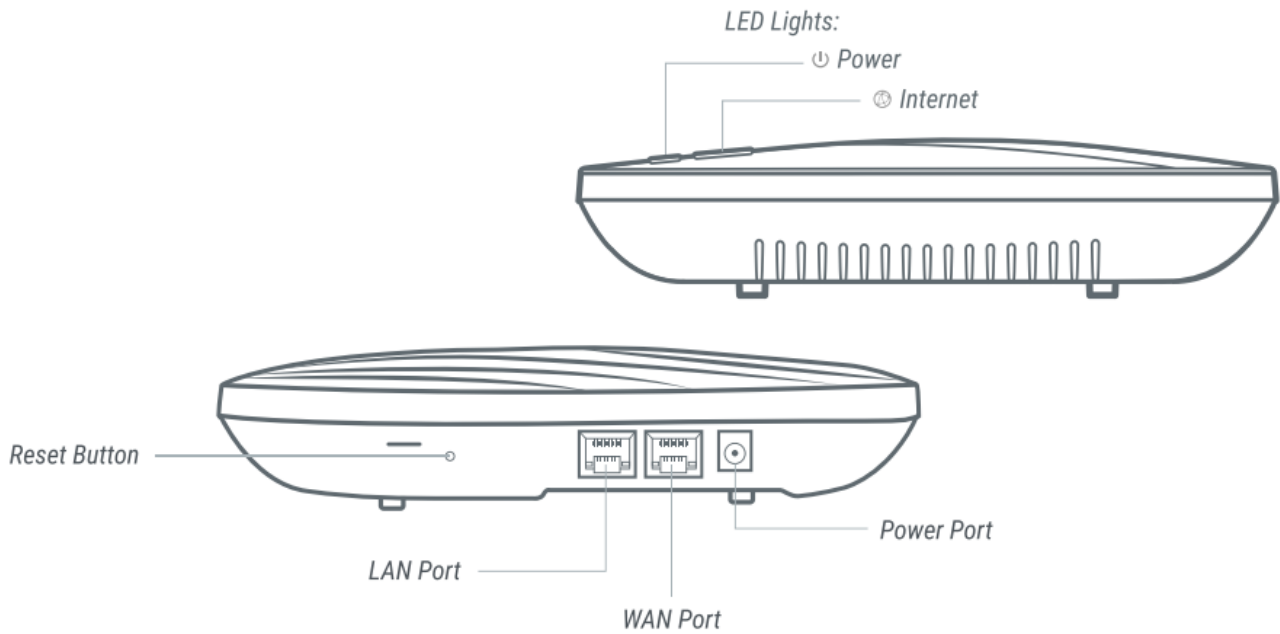


Power cable

Please use power cable (12V/2A DC).



SUPPORT



Repair/Reset

If you cannot access the web-based setup page or cannot connect to the router, you can press the Reset button:

Press and hold for 3 seconds, and then release to repair your network.

Press and hold for 10 seconds, and then release to reset the router to factory settings. All user data will be cleared.

Technical Support

For more detailed and updated instructions, please visit our website docs.gl-inet.com

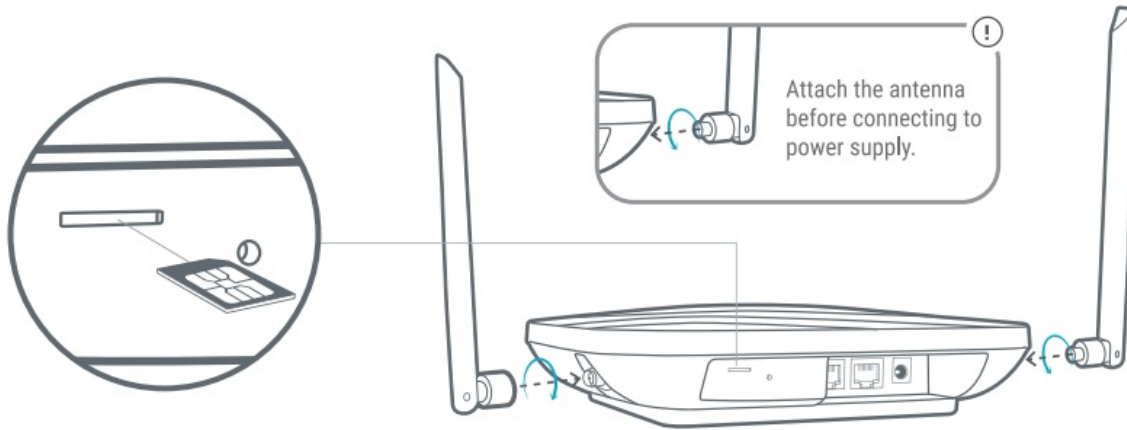
For further questions, you can get help from the following ways:

Email to support@gl-inet.com

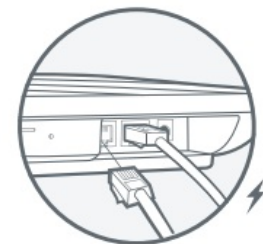
Message us on our Facebook: facebook.com/gl.inet. wfi/Post questions in our forum: forum.gl-inet.com

Ask professionals in other forums e.g. OpenWrt, LEDE or other professional websites

WITH 4G MODULE



Insert Nano SIM Card & Attach the External Antennas



Plug the cable connecting
to your computer into LAN port



Insert Nano SIM Card and attach the antennas before connecting to a power supply.

- Hot-plug for nano-SIM card is not supported for this router.

WARRANTY

- We provide one-year limited warranty for routers and 3-month limited warranty for accessories. Extra warranty may apply according to the local law in which the product purchase took place.
- Highly recommend using the included 12V/2A power adapter.
- Any damage to the router caused by not following the instructions will render this warranty null and void.
- Any damage to the router caused by modifying the PCBA, components or case will render this warranty null and void.
- Issues caused by the use of third-party firmware may not get official support from us.
- Any damage to the router caused by inappropriate use, e.g. inappropriate voltage input, high temperature, dropping in the water or on the ground will render this warranty null and void.
- Pictures on the instructions are only for reference. We reserve the right to change or modify these materials without further notice.

FCC Rules

This device complies with Part 15 of the FCC Rules. Operation is subject to the following two Conditions:

(1) This device may not cause harmful interference, and (2) This device must accept any interference received, including interference that may cause undesired operation. Changes or modifications not expressly approved by the party responsible for compliance could void the user's authority to operate the equipment.

Note: This equipment has been tested and found to comply with the limits for a Class B digital device, pursuant to part 15 of the FCC Rules. These limits are designed to provide reasonable protection against harmful interference in a residential installation. This equipment generates, uses, and can radiate radio frequency energy and, if not installed and used in accordance with the instructions, may cause harmful interference to radio communications. However, there is no guarantee that interference will not occur in a particular installation. If this equipment does cause harmful interference to radio or television reception, which can be

determined by turning the equipment off and on, the user is encouraged to try to correct the interference by one or more of the following measures:

- Reorient or relocate the receiving antenna.
- Increase the separation between the equipment and receiver.
- Connect the equipment into an outlet on a circuit different from that to which the receiver is connected.
- Consult the dealer or an experienced radio/TV technician for help with important announcement

FCC Radiation Exposure Statement

This equipment complies with FCC radiation exposure limits set forth for an uncontrolled environment. This equipment should be installed and operated with minimum distance 20cm between the radiator and your body. This transmitter must not be co-located or operating in conjunction with any other antenna or transmitter. The Equipment named above is confirmed to comply with the requirements set out in the European Council Directive on the Approximation of the Laws of the Member States relating to RED (2014/53/EU). The equipment passed the test which was performed according to the following European standards:

Caution:

The device for operation in the band 5150-5250 MHz is only for indoor use to reduce the potential for harmful interference to co-channel mobile satellite systems.

This product uses Wi-Fi 2.4GHz. Operating Frequency is 2400-2483.5MHz.

5GHz Operating Frequency is 5150-5250MHz and 5725-5850MHz;

EN 301 489-1 2.1.1; EN 301 489-17 V3.1.1; EN 301 489-52 V1.1.0

EN 300 328

EN 301 893 V2.1.1

EN 62311:2018

The Product complies with Directive 2011/65/EU and its

Documents / Resources



[GL Technologies AP1300C4 Wireless Access Point](#) [pdf] User Manual
AP1300C4 Wireless Access Point, Wireless Access Point, Access Point

[Manuals+](#)

- [home](#)
- [privacy](#)