

## GITOPER

**G2 Mini Multi-  
Function  
Transparent  
Custom  
Keyboard**



# GITOPER G2 Mini Multi Function Transparent Custom Keyboard Instructions

[Home](#) » [GITOPER](#) » GITOPER G2 Mini Multi Function Transparent Custom Keyboard Instructions 

## Contents

- 1 GITOPER G2 Mini Multi-Function Transparent Custom Keyboard
- 2 Product Usage Instructions
- 3 Frequently Asked Questions
- 4 Maintenance record
- 5 Power indicator
- 6 Lighting setting
- 7 Connection method
- 8 Wired connection
- 9 List of items
- 10 Quality assurance card
- 11 Contact
- 12 Documents / Resources
  - 12.1 References

# GITOPER

## GITOPER G2 Mini Multi-Function Transparent Custom Keyboard



## Specifications:

- Model: 1SPEVDUJNQMFNFOUBUJPOTUBOEBSEOVNCFS
- Color: FZCPBSE
- Dimensions: (#5 /PUF)
- Power Source: USB

## Product Usage Instructions

### Initial Setup:

1. Connect the device to a power source using the provided USB cable.
2. Press the power button to turn on the device.
3. Follow on-screen instructions for initial setup.

### Basic Functions:

To use the basic functions of the product, follow these steps:

- Press the designated buttons to navigate through the menu options.
- Use the provided manual for reference on specific functions.

### Cleaning and Maintenance:

Ensure the product is unplugged before cleaning. Use a soft,damp cloth to wipe the surface of the device. Avoid using harsh chemicals or abrasive materials.

## Frequently Asked Questions

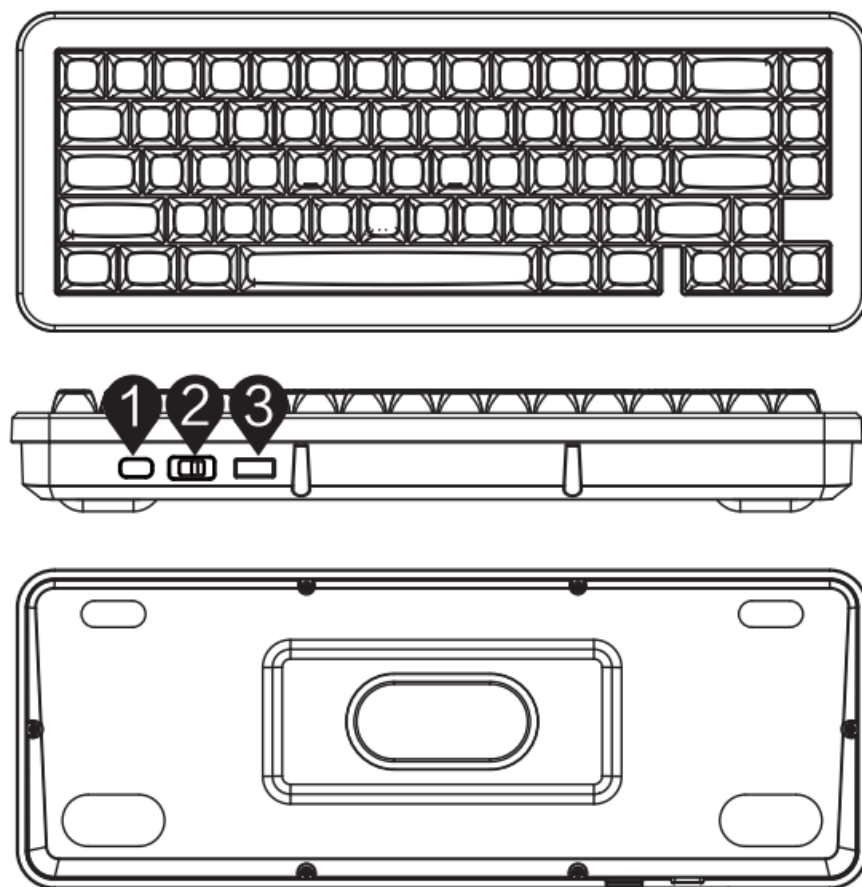
- **Q: How do I charge the device?**
  - A: To charge the device, connect it to a power source using the provided USB cable.
- **Q: How do I reset the device?**
  - A: To reset the device, locate the reset button on the back and press it using a small pointed object.
- **Q: What should I do if the device malfunctions?**
  - A: If the device malfunctions, refer to the troubleshooting section in the user manual or contact customer support for assistance.

## Maintenance record

- Product model: G2 MINI
- Bluetooth name: BT3.0KB/BT5.0KB
- Battery parameters:3.7V 3750mAh
- Enter:5V $\overline{\text{---}}$ 1A
- Driver: Support (go to the official website to download or consult the purchase platform customer service request)

- Connection mode: Wired connection, Bluetooth connection (3.0+5.0), 2.4G connection drive
- Wireless version: 2.4G
- Wireless connection distance:10 meters (unimpeded open environment)
- Charging port: Type-C(USB-C)
- Supported systems: Windows, macOS, iOS, Android
- Product size: Length:336mm width:126mm Height :48mm
- Product weight: 1075g
- Switch: Kailh

1. Type-C Indicates the interface
2. Three-segment switch
3. 2.4G receiver storage area



## FCC Statement

This device complies with part 15 of the FCC Rules. Operation is subject to the following two conditions:

1. this device may not cause harmful interference, and
2. This device must accept any interference received, including interference that may cause undesired operation.

Changes or modifications not expressly approved by the party responsible for compliance could void the user's authority to operate the equipment. This equipment has been tested and found to comply with the limits for a Class B digital device, pursuant to Part 15 of the FCC Rules.

These limits are designed to provide reasonable protection against harmful interference in a residential installation. This equipment generates uses and can radiate radio frequency energy and, if not installed and used in accordance with the instructions, may cause harmful interference to radio communications. However, there is no guarantee that interference will not occur in a particular installation. If this equipment does cause harmful interference to radio or television reception, which can be determined by turning the equipment off and on, the user is encouraged to try to correct the interference by one or more of the following measures:

- Reorient or relocate the receiving antenna.
- Increase the separation between the equipment and receiver.
- Connect the equipment into an outlet on a circuit different from that to which the receiver is connected
- Consult the dealer or an experienced radio/TV technician for help.

### **Dormancy mechanism**

Release the key in wireless mode for 5 minutes to enter standby mode, the keyboard backlight is off, press any key to light up; When a key wakes up the keyboard, the key value must trigger the function. In wired mode, the keyboard does not sleep. Standby for 30 minutes to enter hibernation. The first key is invalid and the keyboard wakes up. The second key is valid.

### **Power indicator**

In wireless mode, when the battery voltage is lower than 3.3V, the low voltage indicator flashes (low voltage state, red light flash reminder, until no power, the keyboard stops working. Charging state, blue light breathing flicker. Full state, green light long bright.) When plugged in the cable charging, you can resume normal use.

### **Lighting setting**

#### **FN+\ Toggle lighting effects:**

With the tide, ripples, stars, endless flow, like shadow, mountains, sine waves, colorful springs, snow without trace, flowers, two birds with one stone, peaks and turns, colorful, all over the sky snow, meteor, steady on, dynamic breathing, spectral cycle, custom (drive), music rhythm electric sound (drive), music rhythm classic (drive), light mode (drive) Drive);

- FN+Enter Toggle light color: Colorful, red, orange, yellow, green, blue, blue, purple, white;
- FN+<— Light speed slows down;
- FN+→ Light speed increases;
- FN+ ↓ Increased light brightness;
- FN+↑ Reduced light brightness;

### **multimedia key and function key**

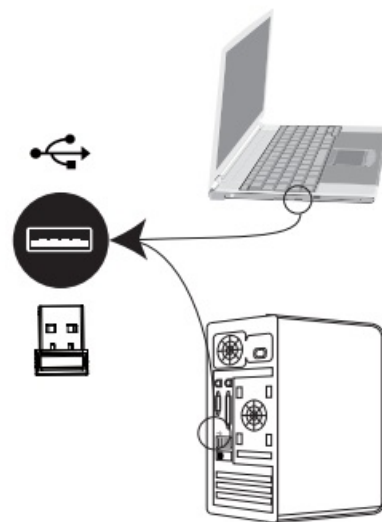
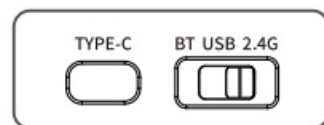
Automatic detection of switching system after connection

Trigger mode	WIN	MAC
FN+ 1	F1	My computer
FN+ 2	F2	Mailbox
FN+ 3	F3	homepage
FN+ 4	F4	search
FN+ 5	F5	Refresh
FN+ 6	F6	MUSICIANS
FN+ 7	F7	Previous song
FN+ 8	F8	Play/pause
FN+ 9	F9	Next song
FN+ 10	F10	Sound off

Trigger mode	WIN	MAC
FN+ 11	F11	Volume -
FN+ 12	F12	Volume +
FN+WIN	Lock the WIN and APP keys	No
FN+ESC for three seconds	Factory data reset	Factory data reset
FN+U	Prtsc	Prtsc
FN+I	Scrlk	Scrlk
FN+O	Pause	Pause
FN+J	Ins	Ins
FN+L	End	End

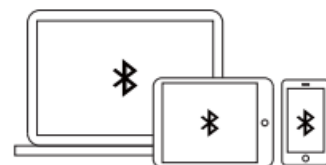
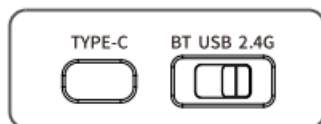
## Connection method

### 2.4G connection



2.4G mode: Insert the dedicated receiver that has been coded, turn the three-segment switch to the 2.4G mark, and the keyboard can be used normally.

### Bluetooth connection



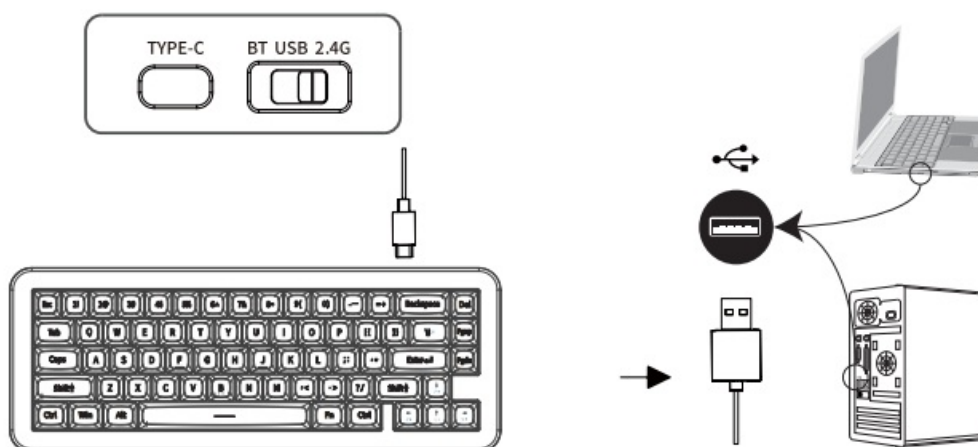
- Bluetooth Name (BT3.0KB/BT5.0KB)
- Bluetooth mode: The three-segment switch is turned to the Bluetooth identifier.

### Three Bluetooth channels:

- Press FN+Q: Bluetooth 1 FN+W: Bluetooth 2 FN+E: Bluetooth 3. Open the device to be paired for Bluetooth pairing, and the keyboard can be used normally. When multiple Bluetooth devices are connected at the same

time, press the corresponding Bluetooth key to switch Bluetooth devices. (Long press the corresponding Bluetooth key for Bluetooth matching code)

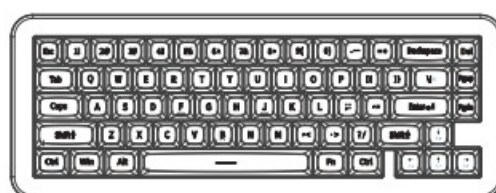
## Wired connection



**Wired mode:** First insert the cable into the TYPE-C interface, the other end is connected to the computer, the three-section switch is turned to the USB identifier, and the keyboard can be used normally.

## List of items

1. A keyboard
2. One TYPE-C charging cable
3. 2.4G receiver
4. Key extractor
5. A manual warranty card



Keyboard



TYPE-C charging cable



2.4G receive

## Quality assurance card

Thank you for your purchase of our products! In order to let you rest assured that the use of this product, better protect your rights and interests, our company in strict implementation of the State Administration of Quality Supervision, Inspection and Quarantine joint Information Product Department and the State Administration for

Industry and Commerce jointly issued the “Microcomputer commodity repair, replacement and return responsibility Provisions” on the basis of the implementation of after-sales service, hereby make the following commitments:

1. Validity period of service: Effective from the date of purchase, that is, the date recorded in this document.
2. Service Content:
  1. Within 7 days from the date of purchase, the packaging is not damaged, does not affect the re-sale of products, consumers are not satisfied, return or replacement.
  2. Within 15 days from the date of purchase, the consumer is not satisfied with the company's products of the same value.
  3. Since the date of purchase, the product failure caused by poor electrical performance will be repaired free of charge during the warranty period. (Specific maintenance matters are handled by the provincial representative of the region or the product head office)
3. Not within the scope of services:
  1. Has exceeded the effective service or free maintenance period.
  2. Failure or damage caused by failure to use, maintain and store according to the correct instructions.
  3. Failure or damage caused by maintenance not authorized by the company's product maintenance organization.
  4. Products without dealer's information and seal on the certificate of three guarantees.
  5. Unauthorized alteration of the contents of the three packages.
  6. Consumers remove the QC PASS sticker at the bottom of the product.
  7. Product defects caused by force majeure (such as earthquake, fire, flood).
  8. Poor products caused by human factors (such as operation error, handling damage, bump, input inappropriate voltage, etc.).
  9. Failure or damage caused by other non-product design, technology, manufacturing, quality and other problems.

#### The name and content of toxic substances or elements in the product

Part name	Poisonous or harmful substance or element					
	Lead (pb)	Mercury (Hg)	Cadmium (Cd)	Hexavalent chromium (Cr(vi))	Polybrominated biphenyls (PBB)	Polybrominated diphenyl ethers (PBDE)
Printed circuit board assembly	×	○	×	○	○	○
Shell and accessories	×	○	×	○	○	○



- 0= indicates that the content of the toxic and harmful substance in all homogeneous materials of the part is below the limit requirements specified in the SJ/T11363-2006 standard.
- X= indicates that the content of the toxic or hazardous substance in at least one homogeneous material of the part exceeds the limit requirements specified in the SJ/T11363-2006 standard.

Printed circuit board components: including printed circuit boards and their components, electronic components, etc. Note: 90% of the components of this product are made of non-toxic and environmentally friendly materials, and the components containing toxic and harmful substances or elements cannot be replaced due to the limitation of the global technological development level. Electronic information products sold within the territory of the

People's Republic of China must be marked with this mark, the number in the mark represents the environmental protection life of the product under normal use.

- This certificate is an important basis for the company's after-sales service, please keep it properly!

### Sales record

User information	User name		Contact number	
	Mailing address and postcode			
	E-mail			
Product information	Product name			
	Product number			
	Product serial number			
Sales information	Seller name			
	Contact address			
	Contact number		Postal code	
	Production date		Sale date	
	Dealer's seal		Invoice number	

### Maintenance record

- To be filled in by the maintenance organization

Maintenance frequency	Maintenance unit	Address	Telephone	Postcode
1				
2				
3				

**Note:** Please fill in each item clearly, please do not alter it without authorization, and take good care of this warranty service card to protect your legitimate rights and interests. For service or questions, please consult your local distributor or contact us.


### Contact

- DONGGUAN JITUO ELECTRONIC TECHNOLOGY CO.,LTD
- ADD: Zone B, 4th floor, Building F, no.177, Wenming Road (Qiao Tou section), Qiaotou Community, Qiaotou Town,
- Dongguan City, China
- Postal Code: 523523
- Website: [www.gitoper.com](http://www.gitoper.com)
- Email: [service@gitoper.com](mailto:service@gitoper.com)



- Product implementation standard number: Keyboard GB/T 14081-2010
- Note: the product picture is for reference only, there may be differences\ with the actual, please refer to the actual prevail, please forgive me!

## Documents / Resources

	<a href="#">GITOPER G2 Mini Multi Function Transparent Custom Keyboard</a> [pdf] Instructions G2 Mini, G2 Mini Multi Function Transparent Custom Keyboard, Multi Function Transparent Custom Keyboard, Transparent Custom Keyboard, Custom Keyboard, Keyboard
---	--

## References

- [User Manual](#)

### Manuals+, Privacy Policy

This website is an independent publication and is neither affiliated with nor endorsed by any of the trademark owners. The "Bluetooth®" word mark and logos are registered trademarks owned by Bluetooth SIG, Inc. The "Wi-Fi®" word mark and logos are registered trademarks owned by the Wi-Fi Alliance. Any use of these marks on this website does not imply any affiliation with or endorsement.