



## Girmi RB15 Multifunction Robot User Manual

[Home](#) » [Girmi](#) » Girmi RB15 Multifunction Robot User Manual 



### Contents

- 1 RB15 Multifunction Robot
- 2 SAFETY INSTRUCTIONS
- 3 GENERAL INFORMATION
- 4 DESCRIPTION RB15
- 5 SAFETY MODE
- 6 FIRST USE
- 7 CHOPPING/BLENDING
- 8 KNEADING/MIXING
- 9 SLICING/GRATING
- 10 TURBO OPTION
- 11 CLEANING
- 12 TECHNICAL FEATURES
- 13 Documents / Resources
  - 13.1 References
- 14 Related Posts

**RB15 Multifunction Robot**



**User manual**  
**Mod.: RB15**  
**Technical model: GM-3010E**  
**Robot Multifunzione**

## PROTECTION CLASSES



**WARNING**

ELECTRIC SHOCK RISK

DO NOT EXPOSE TO RAIN OR MOISTURE



This symbol warns the user that un-insulated dangerous voltage inside the system may cause an electrical shock. Do not open the case.



Class II Appliance symbol. The double insulated electrical appliance is one which has been designed in such a way that it does not require a safety connection to electrical earth/ground.



**Caution:** this symbol reminds the user to read carefully the important operations and maintenance instructions in this owner's guide.

## SAFETY INSTRUCTIONS

The following are important notes on the installation, use and maintenance; save this instruction manual for future reference; use the equipment only as specified in this guide; any other use is considered improper and dangerous; therefore, the manufacturer cannot be held responsible in the event of damages caused by improper, incorrect or unreasonable use.

Before use, ensure the equipment is undamaged; if in doubt, do not attempt to use it and contact the authorized service center; do not leave packing materials (i.e. plastic bags, polystyrene foam, nails, staples, etc.) within the reach of children as they are potential sources of danger; always remember that they must be separately

collected. Make sure that the rating information given on the technical label are compatible with those of the electricity grid; the installation must be performed according to the manufacturer's instructions considering the maximum power of the appliance as shown on the label; an incorrect installation may cause damage to people, animals or things, for which the manufacturer cannot be considered responsible thereof.

If it is necessary to use adapters, multiple sockets or electrical extensions, use only those that comply with current safety standards; in any case do not exceed the power consumption limits indicated on the electrical adapter and / or extensions, as well as the maximum power shown on multiple adaptor.

Do not leave the unit plugged; better to remove the plug from the mains when the device is not in use. Always disconnect from power supply if you leave it unattended.

Cleaning operations should be carried out after unplugging the unit.

If the unit is out of order and you do not want to fix it, it must be made inoperable by cutting power cord.

- Do not allow the power cord to get closer to sharp objects or in contact with hot surfaces; do not pull it to disconnect the plug.

- Do not use the appliance in the event of damage to the power cord, plug, or in case of short circuits; to repair the product only address an authorized service center.

- Do not handle or touch the appliance with wet hands or bare feet. Do not expose the appliance to harmful weather conditions such as rain, moisture, frost, etc..

Always store it in a dry place.

- This appliance cannot be used by children, even if they're more than 8 years old.

- This appliance can be used by persons with reduced physical, sensory or mental capabilities or lack of experience and knowledge if they received supervision or instruction concerning use of appliance in a safe way and understand the hazards involved.

- Children must not play with the appliance.

- Keep the appliance and its cord out of reach of children less than 8 years.

If the power cord is damaged, or in case of failure and / or malfunction do not tamper with the unit. The reparation must be done by manufacturer or by service center authorized by the manufacturer in order to prevent any risk. Failure to comply with the above may compromise the unit safety and invalidate the warranty.

- This appliance is intended to be used in household and similar applications such as: staff kitchen areas in shops, offices and other working environments; by clients in hotels, motels and other residential type environments; farm houses, bed and breakfast type environments.

- The appliance is not intended to be operated by means of an external timer or separate remote-control system.

- Before every use, unroll the power cord.

- Use original spare parts and accessories only.

- Do not subject the product to strong impacts, serious damages may result.

- Do not use near or under flammable materials (like curtains), heat, cold spots and steam.

## GENERAL INFORMATION

At the first use, wash carefully all the parts that will be in touch with food such as containers, lids and blades.

Warning: always assemble the container and close the lid before operating the product.

Disconnect the plug from the socket before touching any accessory, especially the blades.

Bring knob on "0" (OFF) position before inserting the plug in the socket. Do not insert large pieces, especially hard foods such as carrots, celery etc... It is recommended to pre-chop food.

Never leave the appliance unattended while it is running.

Always use the appliance on a flat and stable surface. Do not use the appliance running continuously for more than one minute, then wait for at least 5 minutes before restarting.

Do not use the appliance while it's empty and with the accessories already assembled.

Before connecting the power cord, ensure that the speed selector is switched to "0" and that the accessory is correctly assembled.

Never put hands inside the container when the appliance is connected to the power supply.

Use only the food presser to introduce food.

Do not insert food too hot (maximum temperature 60 Co).

Never exceed the maximum capacity.

When processing fruits, remove pit and tough peel. In addition, the product is not suitable to work hard foods such as ice, frozen food, cheese rind, bones or fish bones.

At the end of the process, wait for the blade to completely stop before removing the food from the glass container.

Disconnect the plug from the electrical outlet immediately after using and / or touching any accessory, especially the blades. Also, if some food stops the blades, before removing it, unplug the appliance.

Once finished using the unit, it is recommended to wrap the power cord so as to ensure a better cleaning avoiding any risk of damage.

To clean the appliance, it is recommended only using warm tap water. In case of using detergents, rinse thoroughly. Do not immerse the motor unit in water or other liquids; clean it with a damp cloth.

The blades are very sharp: be careful not to cut yourself when cleaning or while removing food from the container.

## **DESCRIPTION RB15**

1. Food presser
2. Lid
3. Stainless steel grating discs
4. Plastic support
5. Plastic blade for kneading 6 Chopping blade
6. Support
7. Container
8. On-off control knob, 10 speeds + TURBO
9. S/S accessory for julienne and grating

## **SAFETY MODE**

This appliance features a double safety device: the unit only works if the container (8) is correctly assembled and stuck on the motor unit and the lid (2) is correctly stuck on top of the container.

## **FIRST USE**

Remove and install the container a few times without plugging it or adding any fruits or vegetables. Follow these steps to make practice with the object. Wash lids, glass container and accessories in hot water and detergent. Other accessories with electrical parts, such as the motor unit, must be cleaned with a damp cloth and dry immediately.

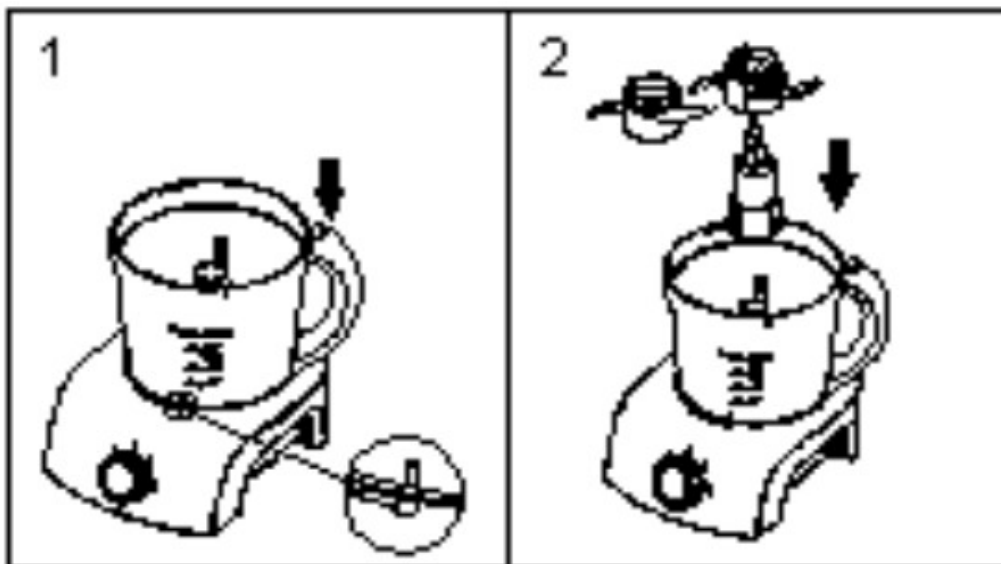
## **CHOPPING/BLENDING**

The knife, consisting of 2 blades, allows to chop and shred fruits, vegetables, meat and, after having add some liquids, to prepare baby food.

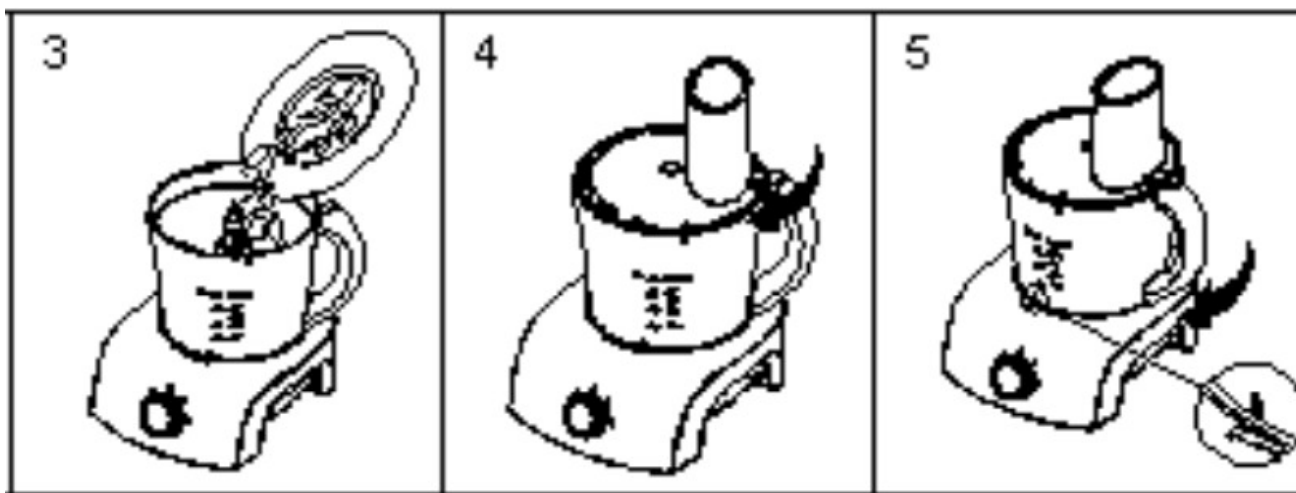


For a correct use, follow the steps below:

- Chop fruits and vegetables in pieces before putting them in the glass.
- Prepare baby food adding water or milk as you prefer, without exceeding the maximum capacity of the container.
- Check that the plug is disconnected from the electrical outlet.
- Place the container (8) on top of the motor unit (9) and lock it by turning it clockwise (Fig.1).
- Insert the support (7) by pushing it to the bottom (Fig. 2).



- Insert the chopping blade (6) on the support (Fig. 2).
- Place food in the container without exceeding the maximum capacity and close the lid (Fig. 3 and Fig. 4).
- Plug the appliance.



- Move the control knob (5) to select the speed; the unit turns on.
- Be careful not to use the appliance for a long time continuously. Correct timing is shown in the following table.
- Once finished, turn off the device and remove the power plug from the electrical outlet.

Ingredients	Quantity max	Operation time
Onions	300 g	30 seconds
Ham	200 g	30 seconds
Strawberries	200 g	25 seconds
Walnuts	100 g	20 seconds
Almonds	100 g	20 seconds
Cheese	100 g	20 seconds
Eggs	4 eggs	25 seconds
Meat	200 g	30 seconds

**Note:** be careful not to exceed either the weights or the time shown in the table. In any case, do not operate for more than 1 minute continuously.

For best results, it is recommended to start from the lowest speeds and move gradually to the higher, removing with a spatula food from the container walls. During process, use the spatula to remove and rework foods attached to the walls. Do not operate with your hands.



## KNEADING/MIXING

Use the plastic blades (5) shown in the figure.

Follow the instructions of “Chopping/Blending” paragraph, assembling (5) the plastic blades instead of the chopper blades (6). Use plastic blades with low/medium speeds.



## SLICING/GRATING

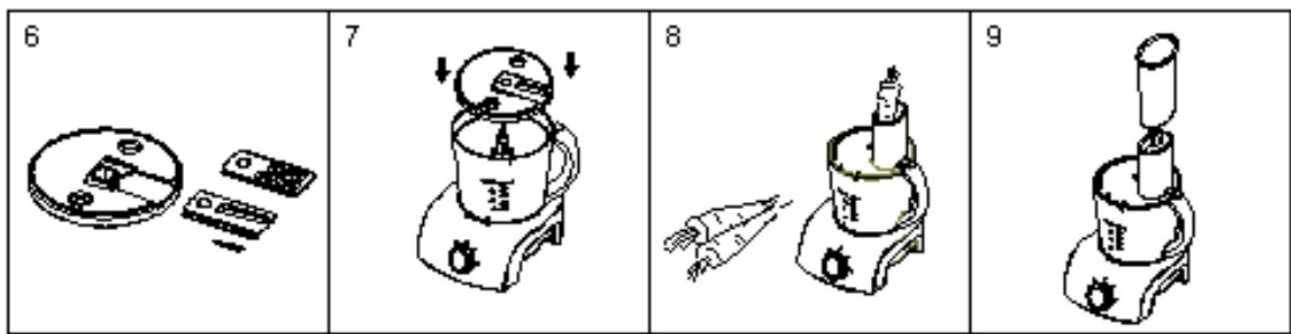
Use the plastic support (4) and one of the attachments (3 or 10).

The first accessory (3) is used to slice, the second one (10) is designed for grating and prepare vegetables julienne.



Use these accessories at low and medium speeds.

- Check the unit is unplugged.
- Place the container (8) on top of the motor unit and lock it by turning it clockwise. (Fig. 1).
- Insert the support (7) by pushing it to the bottom (Fig. 2).
- Install one of the insert (3 or 10) on the plastic disc (4) as shown in Figure 6.
- Insert the support (\$) as shown on Figure 7 and close the lid (Figure 8).
- Plug the appliance to the power outlet.



– Insert food through the hole in the lid (2) using the food presser (1) as shown on Figure 9. Correct timing is shown in the following table.

Ingredients	Quantity (max )	Time	
		Slice	Grate
Potatoes	400g	50s	30s
Melon	400g	50s	30s
Carrots	400g	50s	30s

**Note:** be careful not to exceed either the weights or the time shown in the table. In any case, do not operate for more than 1 minute continuously.

## TURBO OPTION

Press “TURBO” button (9) for working at full speed. This option is available only when the speed selector (9) is located in Turbo position, and the speed will increase up to the maximum level.

## CLEANING

**CAUTION:** Clean and remove accessories only when the unit is disconnected from the power outlet.

The accessories, container, lid and blades can be treated like normal dishes and washed with hot water; they are also dishwasher-safe. Before assembling them again on the motor unit, dry them all completely. The motor cannot be placed in water. Avoid any splashing of liquids. Clean it with a damp cloth and mild detergent. Store it in a dry place and out of the reach of children. All accessories can be stored inside the container.

## TECHNICAL FEATURES

- Power supply: AC 230V~50Hz. Power: 300W
- 10 working speeds selector with TURBO option
- Accessories: chopping blade, plastic kneading blade, plastic disc, 2 stainless steel inserts for grating and slicing, food presser, spatula.

## WASTE OF ELECTRIC AND ELECTRONIC EQUIPMENT



The product is made of non-biodegradable and potentially polluting substances if not properly disposed of; other parts can be recycled. It's our duty to contribute to the ecological health of the environment following the correct procedures for disposal. The crossed out wheeled bin symbol indicates the product complies with the requirements of the new directives introduced to protect the environment (2002/96/EC, 2003/108/EC,



2002/95/EC, 2012/19/EC) and must be properly disposed at the end of its lifetime. If you need further information, ask for the dedicated waste disposal areas at your place of residence. Who does not dispose of the product as specified in this section shall be liable according to the law.

To find the nearest service center, please call the telephone number 0541 694246, fax number 0541 756430 or contact us at [assistenza@trevidea.it](mailto:assistenza@trevidea.it) asking for the service centers supervisor.

**CE** Appliance is conform to the pertinent European regulation and is therefore marked with the CE mark.

# Girmi

BY TREVIDEA

[www.girmi.it](http://www.girmi.it)

TREVIDEA S.r.l.

TREVIDEA S.R.L.


– Strada Consolare Rimini

– San Marino n. 62 – 4792

4 – RIMINI (RN) – ITALY

MADE IN CHINA

## Documents / Resources

	<p><a href="#">Girmi RB15 Multifunction Robot</a> [pdf] User Manual RB15 Multifunction Robot, RB15, Multifunction Robot, Robot</p>
---	--

## References

- [G Piccoli Elettrodomestici | Girmi | Vendita Piccoli Elettrodomestici](#)
- [User Manual](#)