

# GIGABYTE How to Configure ErP Lot 9 in BIOS Setup User Guide

[Home](#) » [Gigabyte](#) » GIGABYTE How to Configure ErP Lot 9 in BIOS Setup User Guide 

## GIGABYTE How to Configure ErP Lot 9 in BIOS Setup User Guide

# GIGABYTE™

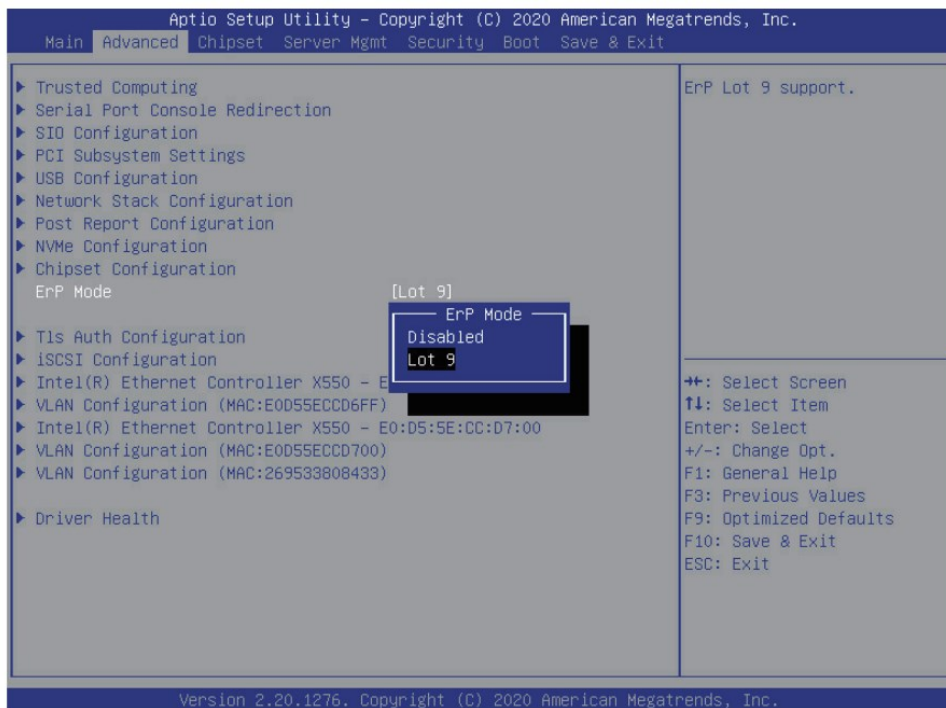
### Contents

- [1 How to Configure ErP Lot 9 in BIOS Setup](#)
- [2 Documents / Resources](#)
- [3 Related Posts](#)

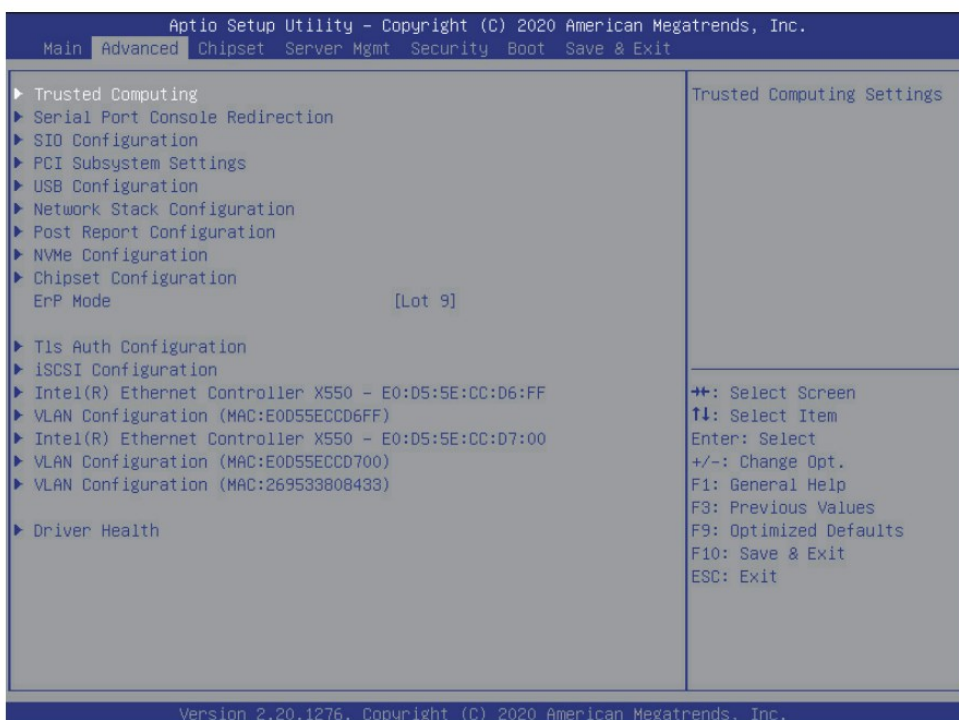
## How to Configure ErP Lot 9 in BIOS Setup

Follow the instructions to enable the ErP Lot 9 function.

1. Access the BIOS Setup program by pressing the <DEL> key during the POST when the power is turned on.
2. Go to Advanced Page.
3. Select ErP Mode and select Lot 9.
4. Go to Save & Exit Page to save the configuration.



- When ErP Mode is enabled, fan speed will be adjusted and any redundant PSU will be placed into a standby state (“Cold Redundancy”) in order to decrease power consumption when the server is in idle mode.



#### NOTE!

ErP mode will be enabled only when no add-on cards are installed in the server or motherboard, and BMC firmware has also been updated to the latest version with ErP mode support.

## Documents / Resources



## [GIGABYTE How to Configure ErP Lot 9 in BIOS Setup](#) [pdf] User Guide

ErP Lot 9 in BIOS Setup, How to Configure ErP Lot 9 in BIOS Setup, ErP Lot 9 in BIOS SetupE  
rP Lot 9 in BIOS Setup