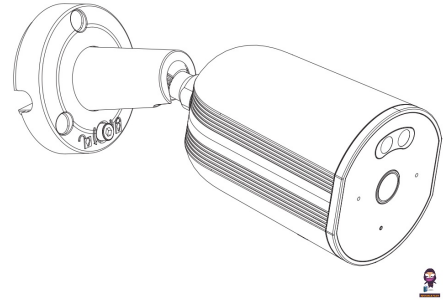


GIEC
GKIPC20AA Smart
Wi-Fi Camera



GIEC GKIPC20AA Smart Wi-Fi Camera User Manual

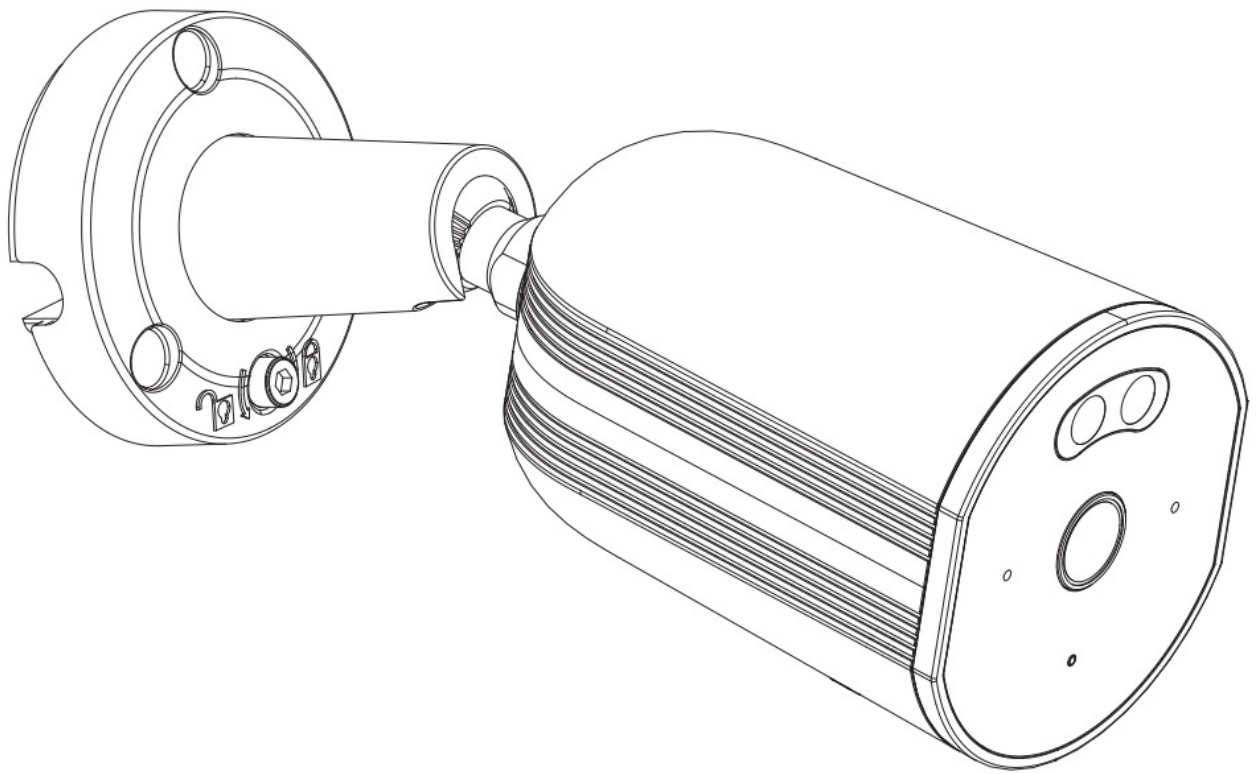
[Home](#) » [GIEC](#) » GIEC GKIPC20AA Smart Wi-Fi Camera User Manual 

Contents

- [1 GIEC GKIPC20AA Smart Wi-Fi Camera](#)
- [2 FCC Radiation Exposure Statement](#)
- [3 FCC Compliance Statement](#)
- [4 Frequently Asked Questions](#)
- [5 Documents / Resources](#)
 - [5.1 References](#)

GIEC

GIEC GKIPC20AA Smart Wi-Fi Camera



Thank you for purchasing a Smart Camera. Get started using your new devices by downloading TuyaSmart, one convenient app that manages everything straight from your phone. Easily connect to your home Wi-Fi and control multiple devices from the touch of your fingertips.

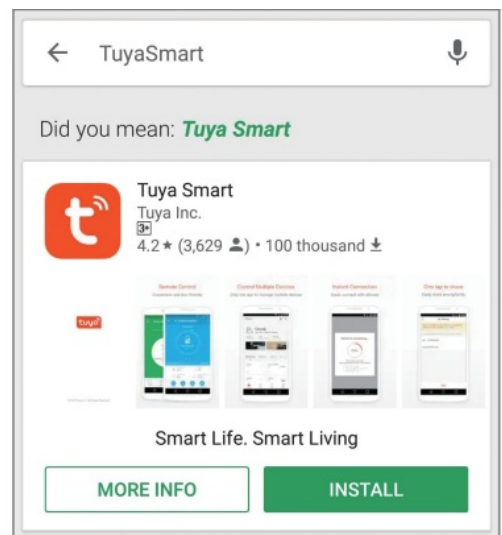
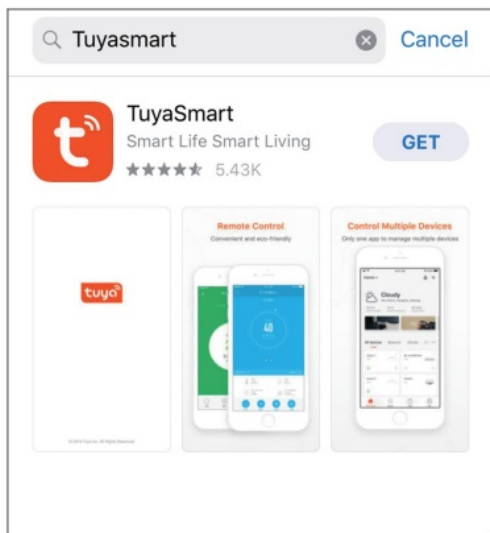
What's in the Box

- Smart Camera x1|
- User Manual x1
- Adapter x1
- Screw Bag x1
- Network Interface Protection Kit x 1
- Different products have different accessories, please refer to physical packing.

Get Ready

- Know your Wi-Fi network and password
- Make sure your mobile device is running iOS® 9 or higher or Android™ 4.1x or higher.
- Make sure the WiFi network is available, compatible with 2.4GHz

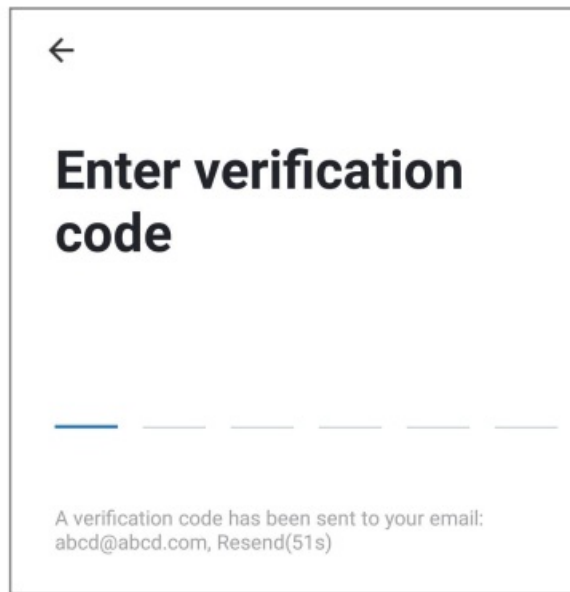
Download the TuyaSmart app from the App Store or Google Play.



Register an account on your TuyaSmart app

- STEP 1. Enter your mobile phone number or email address.

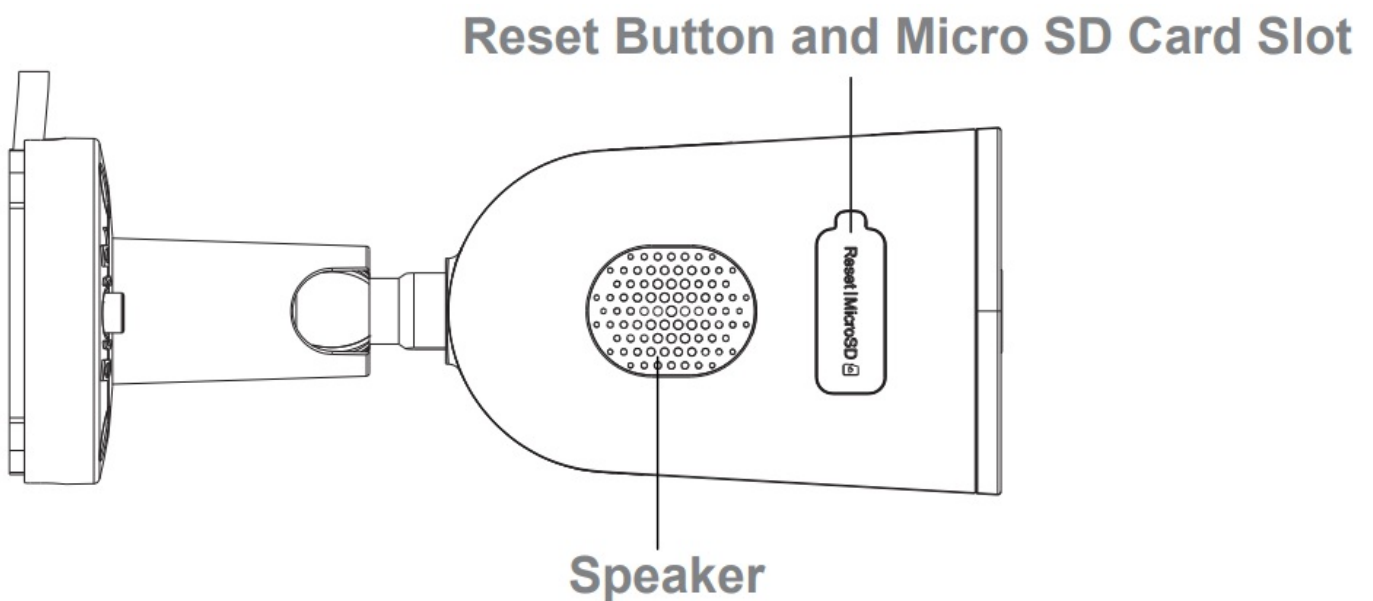
- STEP 2. Enter the verification code and create a passPlugin



3 Plug-in

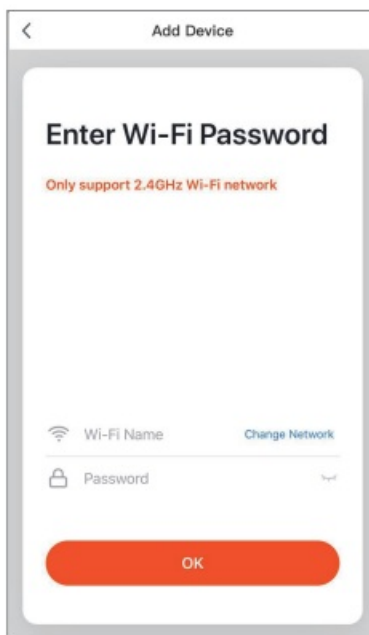
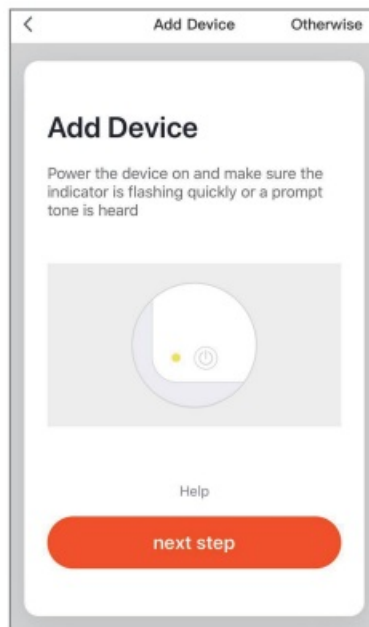
How do I reset my device?

- Press the Reset Button beside the Micro SD card slot for several seconds until the camera starts to beep.



4 Add device

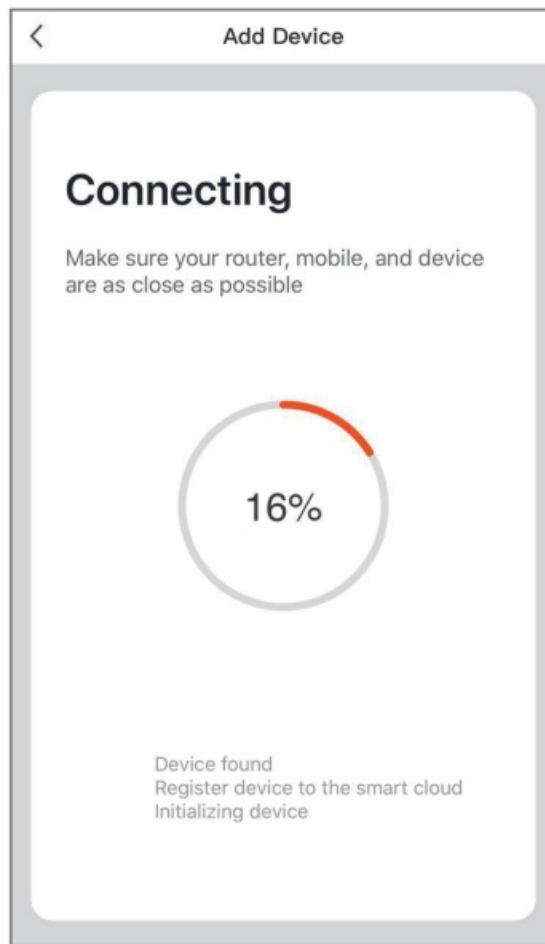
- Othe the pen TuyaSmart APP, click “+” on the top right corner of the page “HOME”, then select “Smart Camera”.
- Make sure the indicator light on the device is flashing red quickly, then press “Next Step”.
- Enter your “Wi-Fi network and password d”, click “OK”.



- Rinstructionstruction about “Scan with the and camera”, click “Continue”.
- Scan the QR Code on your phone with a camera. Heard a prompt tone, click “Heard the beep”.



- When the indicator light on the device turns from a flashing red light to a steady green light, the network configuration is complete.



The other way to add a device quickly is based on the following steps:

1. Turn on your smartphone first;
2. Press “Add Device” icon in the TuyaSmart app, you’ll see “Discovering Devices...” and “Add” progress, then, check the
3. Press “Add” icon then enter your Wifi password and then, click “Next” icon;
4. When the device is connected with your smartphone, click “Done”;

Please refer to the specific APP interface if there are differences.

Add Device(Wired Mode)

Steps:

- Power on the camera with adapter, connect the IP camera to the home router with a network cable;
- Open TuyaSmart APP, click “+” on the top right corner of the page “HOME”, then your smartphone will scan nearby devices using the same network, when you find it then add it;
- When the indicator light turns from a flashing red light to a steady green, network configuration is complete. Note: Make sure your smartphone and camera are on using the same network;

Technical Specifications

- Audio: Internal Speaker and Microphone

- Storage: supports up to 128G Micro SD card (not included)
- WiFi: IEEE 802.11 ac/b/g/n/a, support 2.4GHz/5GHz

FCC Radiation Exposure Statement

This equipment complies with FCC radiation exposure limits set forth for an uncontrolled environment. This equipment should be installed and operated with a minimum distance of 0cm between the radiator & your body.

FCC Compliance Statement

This equipment has been tested and found to comply with the limits for a Class B digital device pursuant to Part 15 of the FCC Rules. These limits are designed to provide reasonable protection against harmful interference in a residential installation. This equipment generates, uses, and can radiate radio frequency energy and, if not installed and used in accordance with the instructions, may cause harmful interference to radio communications. However, there is no guarantee that interference will not occur in a particular installation. If this equipment does cause harmful interference to radio or television reception, which can be determined by turning the equipment off and on, the user is encouraged to try to correct the interference by one or more of the following measures: Reorient or relocate the receiving antenna. Increase the separation between the equipment and receiver. Connect the equipment to an outlet on a circuit different from that to which the receiver is connected. Consult the dealer or an experienced radio/TV technician for help. Changes or modifications not expressly approved by the party responsible for compliance could void the user's authority to operate the equipment.

This device complies with Part 15 of the FCC Rules. Operation is subject to the following two conditions:

1. This device may not cause harmful interference.
2. This device must accept any interference received, including interference that may cause undesired operation.

WARNING: This product can expose you to chemicals known to the State of California to cause cancer. For more information, go to www.P65Warnings.ca.gov.

Frequently Asked Questions

Can I share with family and friends?

you can share your cameras with family and friends who will have access to view the camera and control your bulbs, plugs, and other devices. In the app, press the Profile button and click on the Home Management button, and you will be able to give or revoke sharing permissions. In order to share, the other user should already have downloaded the app and registered a new account.

What's the Wireless Range?

The range of your home Wi-Fi is heavily dependent on your home router and the conditions of the room. Check with your router specifications for exact range data.

How many cameras can I control?

TuyaSmart app can control an unlimited amount of devices in an unlimited amount of locations. Your router may have a limit of how many devices can be connected to one router.

My device can't be connected to network with App

Make sure the device is under the config status (indicator light is flashing quickly) Make sure the Wi-Fi is available and not too far away from router Make sure the Wi-Fi password you input is correct If the connection still fail, reset the device

My device shows offline in my App

Make sure the device is powered on Make sure the network is stable and the Wi-Fi name and password not modified. If not, add device again. If the network is normal, but it's still offline. Check if there are too many Wi-Fi connections. You can restart your router to check the status of the device.

Documents / Resources

	GIEC GKIPC20AA Smart Wi-Fi Camera [pdf] User Manual GKIPC20AA, GKIPC20AA Smart Wi-Fi Camera, Smart Wi-Fi Camera, Wi-Fi Camera, Camera
--	--

References

- [User Manual](#)

[Manuals+](#), [Privacy Policy](#)

This website is an independent publication and is neither affiliated with nor endorsed by any of the trademark owners. The "Bluetooth®" word mark and logos are registered trademarks owned by Bluetooth SIG, Inc. The "Wi-Fi®" word mark and logos are registered trademarks owned by the Wi-Fi Alliance. Any use of these marks on this website does not imply any affiliation with or endorsement.