



# GIANT Amiti E+ 1 & 2 Smart Gateway Service Kit Instruction Manual

[Home](#) » [GIANT](#) » GIANT Amiti E+ 1 & 2 Smart Gateway Service Kit Instruction Manual 

## Contents

- [1 GIANT Amiti E+ 1 & 2 Smart Gateway Service Kit](#)
- [2 Product Information](#)
- [3 Product Usage Instructions:](#)
- [4 Models](#)
- [5 Kit Contents](#)
- [6 Troubleshooting Flowcharts](#)
- [7 Parts Overview](#)
- [8 Documents / Resources](#)
- [9 Related Posts](#)



**GIANT Amiti E+ 1 & 2 Smart Gateway Service Kit**



## Product Information

- **Product Name:** Smart Gateway Service Kit
- **Version:** 1.0 – March 2023

### Compatible Models:

Amiti E+ 1 & 2, Amiti E+ 3, Embolden E+ (ALL), Explore E+ 1/2/3, Fastroad E+ (ALL), Intrigue X E+ (ALL), Intrigue E+ (ALL), PakYak E+, Reign E+ (ALL), Revolt E+, Road E+ (ALL), Stance E+ Pro (ALL), Stance E+ 1, Stance E+ 2 (625wh Battery), Talon E+ (ALL), Tempt E+ (ALL), Thrive E+ (ALL), Trance E+ (ALL), Trance X E+ (ALL), Voya E+

## Product Usage Instructions:

**To use the Smart Gateway Service Kit, please follow these instructions:**

1. Identify the specific model and year of your bike from the compatible models listed above.
2. Refer to the Troubleshooting Flowcharts on pages 3-5 of the user manual for any issues you may encounter.
3. Review the Kit Parts Overview on pages 6-15 to familiarize yourself with the components included in the kit.
4. Locate the specific part(s) needed for your bike model from the kit contents list.
5. Install the Smart Gateway Ergo Button Pad or the Smart Gateway Ergo2 w/USB-C Button Pad, depending on your bike model.
6. If applicable, install the Smart Gateway Ergo3 Handlebar Ring Remote for additional functionality.
7. Install the Smart Gateway Evo LCD Display to replace the existing display on your bike.
8. If desired, install the Smart Gateway GO Top Tube LED Button Pad for enhanced visibility.
9. Replace the existing Com/Bluetooth Unit with the RideControl SMART GATEWAY SG Com Unit to enable communication with the motor and other devices.
10. Connect the Battery Terminal Shim & Screws to ensure a secure connection.
11. Use the T25 Security Torx Wrench to tighten screws and secure components.
12. If needed, refer to the Main Display Cable SG 4pin to connect lights, resolve power issues, lighting issues,

assist mode issues, or Live Valve issues.

13. Ensure that all components are properly connected and secured.
14. Refer to the specific functions of each component as described in the user manual for operation details.

For any further assistance or inquiries, please refer to the complete user manual provided with the Smart Gateway Service Kit.

## **Models**

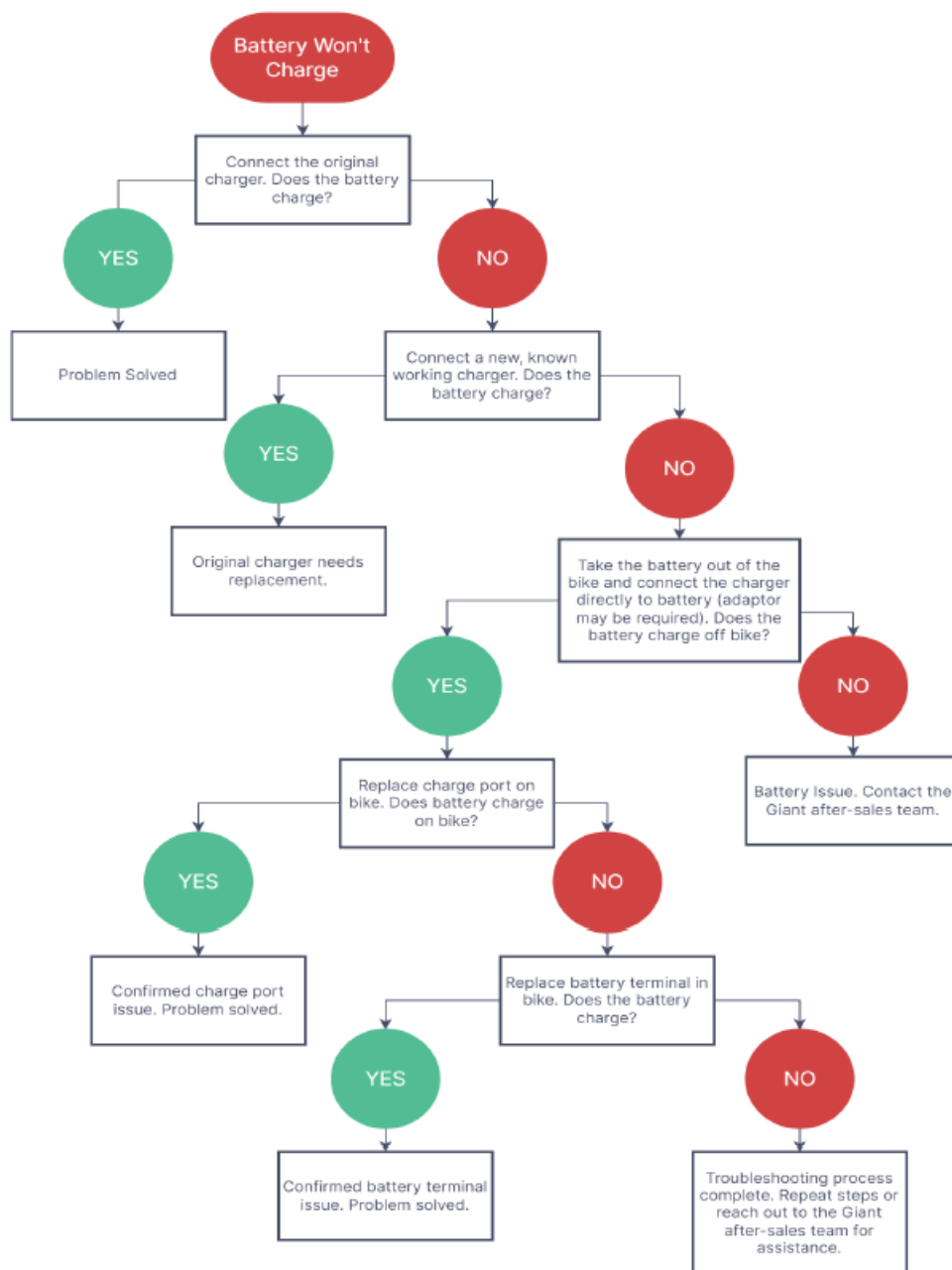
This Kit Services the following models: Smart Gateway (SG) Range	
Year	Model
20-23	Amiti E+ 1 & 2
21-23	Amiti E+ 3
22-23	Embolden E+ (ALL)
21-23	Explore E+ 1/2/3
21-22	Fastroad E+ (ALL)
21-23	Intrigue X E+ (ALL)
22-23	Intrigue E+ (ALL)
22	PakYak E+
22-23	Reign E+ (ALL)
21	Revolt E+
21	Road E+ (ALL)
21-23	Stance E+ Pro (ALL)
22-23	Stance E+ 1
22	Stance E+ 2 (625wh Battery)
22-23	Talon E+ (ALL)
22-23	Tempt E+ (ALL)
21-22	Thrive E+ (ALL)
21-22	Trance E+ (ALL)
21-23	Trance X E+ (ALL)
22-23	Voya E+ (ALL)
20-23	Amiti E+ 1 & 2
21-23	Amiti E+ 3
22-23	Embolden E+ (ALL)
21-23	Explore E+ 1/2/3
21-22	Fastroad E+ (ALL)
21-23	Intrigue X E+ (ALL)
22-23	Intrigue E+ (ALL)

## Kit Contents

	Part Description	Part Sku	Part Photo
A	Smart Gateway Ergo Button Pad	245-FLRMSP-01	
B	Smart Gateway Ergo2 w/USB-C Button Pad	245-FLRMCT-01	
C	Smart Gateway Ergo3 Handlebar Ring Remote	2417-FLRMRG-01	
D	Smart Gateway Evo LCD Display	245-FLDPEV-01	
E	Smart Gateway GO Top Tube LED Button Pad	245-PGRMNF-01	
F	Smart Gateway Com/Bluetooth Unit Repla	245MPGSGYM-02V	
G	SG Downtube Cable Type 1 – 4 pin connector	147L-HCRCTM-01	
H	Wheel Speed Sensor Type 1–Dropout Mount	4430-FSJISS-01	
I	Wheel Speed Sensor Type 2–Stay Mount	245MYAMH-02V	
J	Battery Terminal Shim & Screws (Set of 3)	2120MWASHER-520V	
K	SyncDrive Motor Spider Tool – 36mm Socket	2520-36NUT-02V	
L	T25 Security Torx Wrench	2520-T25-01V	

## Troubleshooting Flowcharts

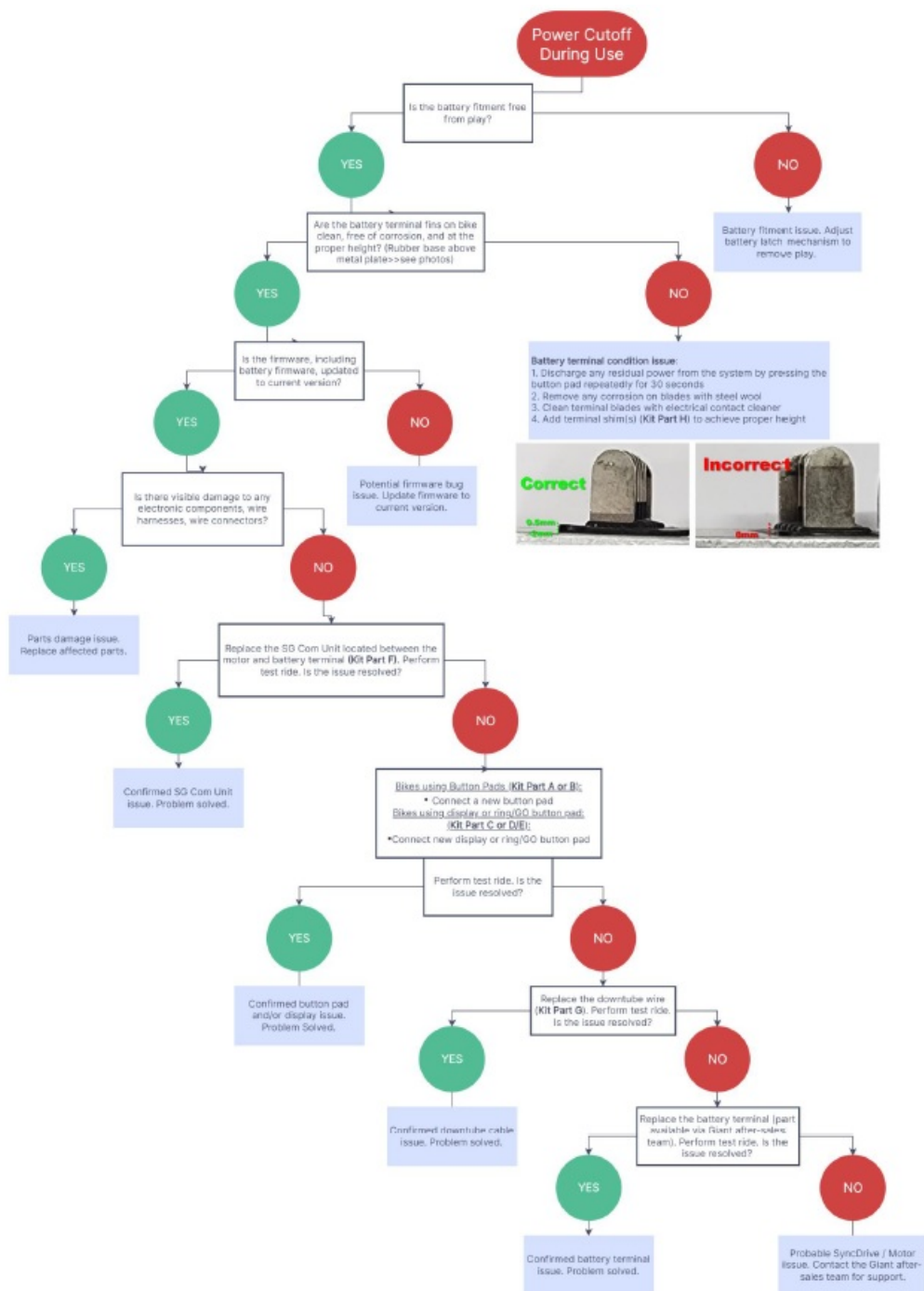
### Battery Charge Issues:



**Bike Cannot Power On:**



## Power Cutoff During Use:



## Parts Overview

### 245-FLRMSP-01

21-23 RideControl Ergo SG LED Button Pad





### Functions

- Turns bike on and off
- Shows Charge Status
- Selects assist modes
- Selects Smart Assist (Automatic Mode)
- Activates Walk Assist
- Turns lights on and off
- Changes information screens
- Changes screen brightness

### Diagnostics

- Use in place of Ergo2 or Dash 2n1.

### **245MFLRMCT-01V**

21 RideControl Ergo2 CT SG LED Remote Button Pad w/USB-C



### Functions

- Turns bike on and off
- Shows Charge Status
- Selects assist modes
- Selects Smart Assist (Automatic Mode)
- Activates Walk Assist
- Turns lights on and off
- Changes information screens
- Changes screen brightness

### Diagnostics

- Use in place of Ergo or Dash 2n1.

### 245-FLDPEV-05

21-23 RideControl Evo SG LCD Display



### Functions

- Responds to button pad
- Displays:

- Current speed
- Battery Charge Percentage
- Assist mode
- Trip info
- Max Speed
- Trip Distance
- Shows if the lights are on and off

### **Diagnostics**

- Use in place of Dash 2n1 with Ergo or Ergo2.

### **As an add-on accessory**

- For any SG-equipped bike with Ergo, Ergo2 or Dash 2n1

### **147L-HCRCTM-01**

21 Main Display Cable SG 4pin 730mm(DC)



### **Functions**

- Connects RideControl System Button and Display to Smart Gateway Communication Unit, Battery, and Motor
- Connects lights to Motor and System Controls
- Connects lights to Battery

### **Diagnostics**

- on/off power issues
- lighting issues
- Assis mode issues
- Live Valve issues

### **As an add-on accessory**

- To add 6v lights to work with Ergo, Ergo2 and Dash 2n1
- To add 36v lights

### **245MPGSGYM-02V (- 09V)**

21-23 RideControl SMART GATEWAY SG Com Unit



### **Functions**

- Holds bike's operating system programming and Bluetooth/ANT+ Radio
- Reads Button Functions to communicate with motor
- Broadcasts Speed to Display and Phone App
- Sends Battery info to Display and Phone App

### **Diagnostics**

- On/Off Power issue
- Programming issues
- Speed issues
- lighting issues
- Assis mode issues
- Phone App issues

### **245-PGRMNF-01**

22 RideControl Go SG Top Tube LED Control Button



### Functions

- Power on/off
- Changing Modes
- Connects to Ergo3

### Diagnostics

- On/Off Power issue
- Assis mode issues

### 2417-FLRMRG-01

22 RideControl Ergo3 Remote Ring SG 750mm



### Functions

- Changing Modes
- Walk Assist

- Connects to RideControl Go

### Diagnostics

- On/Off Power issue
- Assis mode issues
- Walk Assist issues

### 4430-FSJISS-01

20-23 Wheel Speed Sensor (Pro/Sport1) Integrated 600mm



### Functions

- Speed info to motor

### Diagnostics

- Speed issues

### 245MYAMH-02V

17-21 Speed Sensor Chain Stay Mounted 700mm



### Functions

- Speed info to motor

## Diagnostics

- Speed issues

### 2120MWASHER-520V

19+ Integrated Battery Terminal SHIM (3 w/screws)



- **Functions**
- Alters height of terminal blades.

## Diagnostics

- Power issues
- Charging issues

### 2520-36NUT-02V

17+ Sport Life Motor 36mm Spider Lock Ring Tool 3/8 Socket



## Functions

- Chainring Sider Removal for Core, Life, Sport Motors


### 2520-T25-01V



## Functions

- Remove chainstay-mounted speed sensors
- Remove and Adjust EMTB Battery Locks

## Documents / Resources

 <p><b>GIANT</b>   <b>AMITY</b>   <b>E+ 1 &amp; 2</b>   <b>SMART GATEWAY</b>   <b>SERVICE KIT</b> Version 1.0   March 2023</p> <p><b>Table of Contents</b></p> <ul style="list-style-type: none"><li>1. Introduction</li><li>2. Smart Gateway Kit Contents</li><li>3-5. Troubleshooting Flowcharts</li><li>6-10. Kit Parts Overview</li></ul>	<p><a href="#">GIANT Amity E+ 1 &amp; 2 Smart Gateway Service Kit</a> [pdf] Instruction Manual</p> <p>Amity E 1 2 Smart Gateway Service Kit, Amity E 1 2, Smart Gateway Service Kit, Gateway Service Kit, Service Kit</p>
--	---