



[Home](#) » [GHOST CONTROLS](#) » **GHOST CONTROLS GCAXMC-R Ghost Multi Connect Kit**

Instructions 

Contents [[hide](#)]

- [1 GHOST CONTROLS GCAXMC-R Ghost Multi Connect Kit](#)
- [2 Product Specifications](#)
- [3 Product Usage Instructions](#)
- [4 AXMC-R INSTRUCTIONS](#)
- [5 FCC Warning](#)
- [6 CUSTOMER SERVICE](#)
- [7 FAQ](#)
- [8 Documents / Resources](#)
 - [8.1 References](#)



GHOST CONTROLS GCAXMC-R Ghost Multi Connect Kit



Product Specifications

- **Product Name:** Ghost Multi Connect™ Kit
- **Model:** AXMC-R
- **Control:** Mobile device
- **Compliance:** FCC Part 15
- **Operating Distance:** Mobile device range

Product Usage Instructions

1. Step 1: Mounting the Multi Connect™ Kit

- Mount the kit close to the control box.

2. Step 2: Replacing the Strain Relief

- Remove the strain relief on the bottom of the control box and replace it with the included grommet.

3. Step 3: Adding the Ghost Multi Connect™ Kit to the Control Board

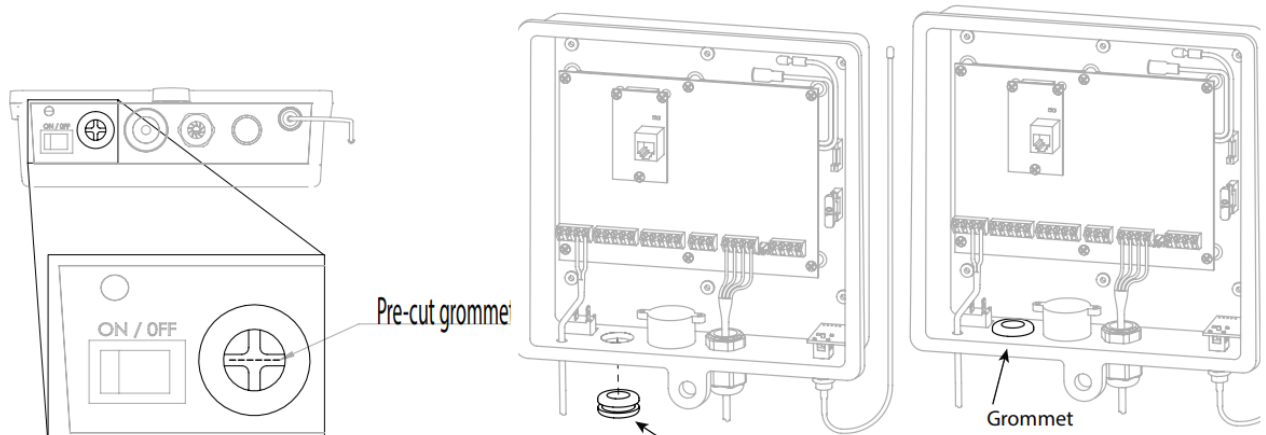
- Connect the Ghost Multi Connect™ wire into the terminal on the control board.
- Insert the cable through the new hole in the bottom of the control box.
- For detailed setup and app download, refer to the Google Play Store or Apple App Store for the Remootio app.

AXMC-R INSTRUCTIONS


This kit gives you the ability to control your gate with your mobile device.

1. **STEP 1.** MOUNT THE MULTI CONNECT™ KIT CLOSE TO THE CONTROL BOX
2. **STEP 2.** REMOVE THE STRAIN RELIEF ON THE BOTTOM OF THE CONTROL BOX AND REPLACE IT WITH THE GROMMET

- **Add the included grommet**



3. **STEP 3.** ADDING THE *GHOST MULTI CONNECT™ KIT TO THE CONTROL BOARD

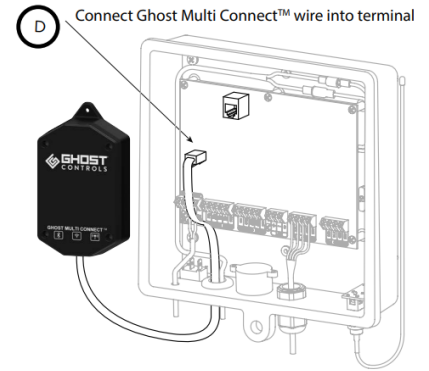
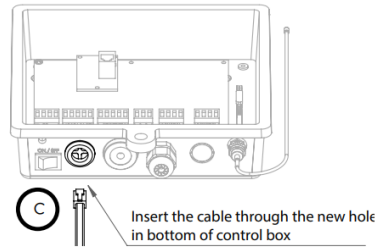
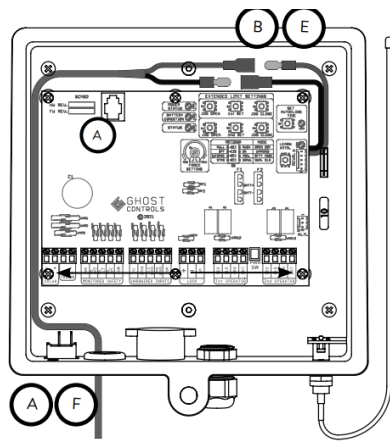
- **A.** Turn off the gate opener at the control box
- **B.** Disconnect the battery terminal cables in the control box.
- **C.** Route the Ghost Multi Connect™ Kit cable wire into your control box using the new grommet you added in Step 2.
- **D.** Plug in your Ghost Multi Connect™ Kit terminal into the socket on the control board (A)
- **E.** Re-connect the battery terminal cable.
- **F.** Turn on the control box.
- **G.** Go to the Google Play or Apple App Store and download the Remootio App to your phone (free) 
- **H.** Follow the setup instructions in the app



Google Play
Remootio



Apple App
Remootio



FCC Warning

This device complies with part 15 of the FCC rules. Operation is subject to the following two conditions:

1. This device may not cause harmful interference,
2. This device must accept any interference received, including interference that may cause undesired operation.

Changes or modifications not expressly approved by the party responsible for compliance could void the user's authority to operate the equipment.

NOTE: This equipment has been tested and found to comply with the limits for a Class B digital device, under part 15 of the FCC Rules. These limits are designed to provide reasonable protection against harmful interference in a residential installation. This equipment generates uses and can radiate radio frequency energy and, if not installed and used according to the instructions, may cause harmful interference to radio communications. However, there is no guarantee that interference will not occur in a particular installation. If this equipment does cause harmful interference to radio or television reception, which can be determined by turning the equipment off and on, the user is encouraged to try to correct the interference by one or more of the following measures:

- Reorient or relocate the receiving antenna.
- Increase the separation between the equipment and receiver.
- Connect the equipment to an outlet on a circuit different from that to which the receiver is connected.
- Consult the dealer or an experienced radio/TV technician for help.

Radiation Exposure Statement

This equipment complies with FCC radiation exposure limits set forth for an uncontrolled environment. This equipment should be installed and operated with a minimum distance of 20cm between the radiator and your body.

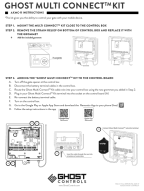
CUSTOMER SERVICE

- www.GhostControls.com
- Made in China, AXMCIM
- Rev. 202307
- ©2023 GHOST CONTROLS®

FAQ

- **Q: What should I do if I encounter interference with my Ghost Multi Connect™ Kit?**
 - **A:** If interference occurs, try reorienting or relocating the receiving antenna, increasing the separation between the equipment and the receiver, or consulting a professional for assistance.
- **Q: What is the operating distance of the Ghost Multi Connect™ Kit?**
 - **A:** The kit operates within the range of your mobile device.
- **Q: Is there a minimum distance requirement for installation?**
 - **A:** Yes, maintain a minimum distance of 20cm between the radiator and your body during installation and operation.

Documents / Resources

	GHOST CONTROLS GCAXMC-R Ghost Multi Connect Kit [pdf] Instructions GCAXMC-R, GCAXMC-R Ghost Multi Connect Kit, Ghost Multi Connect Kit, Multi Connect Kit
---	--

References

- [User Manual](#)

■ GHOST CONTROLS

🔑 GCAXMC-R, GCAXMC-R Ghost Multi Connect Kit, GHOST CONTROLS, Ghost Multi Connect Kit, Multi Connect Kit

Leave a comment

Your email address will not be published. Required fields are marked *

Comment *

Name

Email

Website

☐ Save my name, email, and website in this browser for the next time I comment.

Post Comment

Search:

Search

[Manuals+](#) | [Upload](#) | [Deep Search](#) | [Privacy Policy](#) | [@manuals.plus](#) | [YouTube](#)

This website is an independent publication and is neither affiliated with nor endorsed by any of the trademark owners. The "Bluetooth®" word mark and logos are registered trademarks owned by Bluetooth SIG, Inc. The "Wi-Fi®" word mark and logos are registered trademarks owned by the Wi-Fi Alliance. Any use of these marks on this website does not imply any affiliation with or endorsement.

