

**GHome**  
Smart  
**SW19 Smart**  
Ceiling Fan and  
Light Dimmer



## GHome Smart SW19 Smart Ceiling Fan and Light Dimmer Switch User Guide

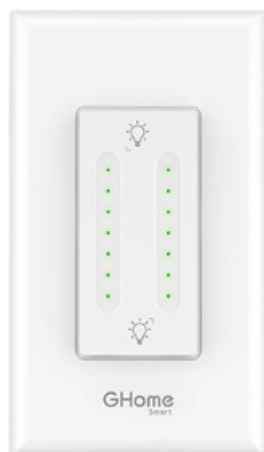
[Home](#) » [GHome Smart](#) » GHome Smart SW19 Smart Ceiling Fan and Light Dimmer Switch User Guide 

### Contents

- 1 [GHome Smart SW19 Smart Ceiling Fan and Light Dimmer Switch](#)
- 2 [Specifications](#)
- 3 [Product Usage Instructions](#)
- 4 [Product Overview](#)
- 5 [Before You Install](#)
- 6 [How to Pair with the App](#)
- 7 [Reset](#)
- 8 [Warnings and Precautions](#)
- 9 [Frequently Asked Questions](#)
- 10 [Documents / Resources](#)
  - 10.1 [References](#)

**GHome**  
Smart

### GHome Smart SW19 Smart Ceiling Fan and Light Dimmer Switch



## Specifications

- **Product Name:** Smart Ceiling Fan & Light Dimmer Switch SW19
- **Model:** SW19
- **Dimensions:** 75x100mm
- **Weight:** 105g/4C
- **Version:** 4.02.000.1092 V1.0
- **Release Date:** 2024/4/12

## Product Usage Instructions

### Installation:

1. Ensure the power is off at the circuit breaker.
2. Connect the Smart Ceiling Fan & Light Dimmer Switch following the wiring configuration: Neutral-In, Live-In, Fan-Out, Led-Out, Ground.

### Pairing with the App:

1. Open the Gosund app and create an account.
2. Turn on the switch and place it near the router.
3. Hold the ON/OFF button for 5 seconds until it starts blinking slowly.
4. In the app, click the + symbol to add a device and follow the on-screen instructions.
5. You can pair using Bluetooth Auto-Discovery Mode or Slow Flash Mode (AP).

### Reset:

To reset the device, turn on the power, and hold the Reset button for 5 seconds until it starts flashing slowly.

### Warnings and Precautions:

- Avoid placing the device in humid environments or near heating devices.
- Keep out of reach of children and pets.
- Do not disassemble or repair the device yourself.
- Do not use the device if visibly damaged.
- Avoid storing in extreme conditions or using aggressive detergents for cleaning.

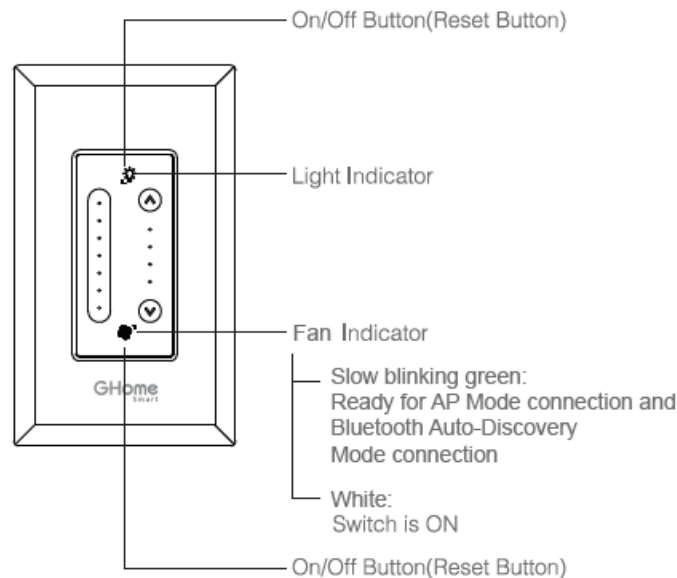
### Smart Ceiling Fan& Light Dimmer Switch SW19

Since the device only supports a 2.4G Wi-Fi connection, please ensure that the mobile phone and the device are connected under 2.4G Wi-Fi simultaneously.

- **Model:** SW19
- **FCC ID:** 2BGPL-SW19
- **Input:** 120V~ 50/60Hz, 4A
- **Fan Max Power:** 120W
- **Light Max Power:** 400W

- **Max output:** 150W LED, 150W CFL, 400W INC, 1A ceiling fan
- **Operating Temp:** -10-40°C

## Product Overview



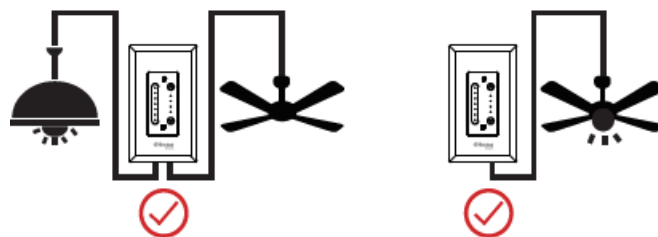
Bluetooth Auto-Discovery Mode/AP mode long press the pair button for 5 seconds. Slowly blinking indicates it's ready to pair.

## Before You Install

### Installation Tips!

#### **WARNING: SHOCK HAZARD**

Incorrect installation may be dangerous or illegal. Multiple circuit breakers may need to be de-energized for safe installation. If you are unfamiliar with electrical work, please call a professional electrician.



## Before You Install











- **Live Wire (Line Wire):** A live wire is a wire carrying an electric current. If you keep your tester here, it will show an indication when power is there.
- **Load Wire:** The load wire connects your light switch to your light fixture. It is usually attached to a brass terminal on the previous switch. It is sometimes black or red. 2 load wires are required to connect with the Smart Ceiling Fan& Light Dimmer Switch.
- **Neutral Wire:** A neutral wire which is normally in white allows the switch to be powered while simultaneously allowing the lighting circuit connected to your lights to be powered off.

- **Ground Wire:** Ground wire is a bare copper wire that provides a conducting path to the earth.

If the wires in your switch wall box are different from the ones listed below, we recommend consulting a qualified electrician.

## Identify Wires By Color

- Tip #1: An easy way to identify the wires in your wall box is by looking at the color.

<b>Neutral</b> White or Grey	 
<b>Ground</b> Green, Copper, or Green with Yellow Strip	  
<b>Line</b> Black	
<b>Load</b> Red or Black	 
<b>Traveler</b> White or Black	 

## If Line and Load Are Both Black

- **Tip #2:** The Load wire is usually coming from the top of the box. The Line wire is generally coming from the bottom of the box.
- **Tip #3:** Before removing the switch, test each wire with a voltage tester.

## CAUTION

Risk of electric shock. Do NOT touch any wires during this process.

- After removing the face plate, turn the breaker back on.
- Very carefully, press the voltage pen against each wire.
- The pen will glow red when the wire is hot.
- The wire that causes the pen to glow red is the hot wire; also known as the Line wire.
- The wire that does not cause the pen to glow red is the Load wire.

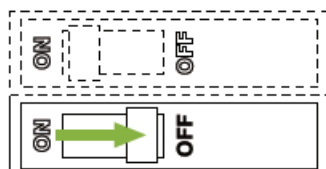
## CAUTION:

Risk of electric shock. Before continuing with the rest of the installation process, make sure to turn the power breaker off.

## Install the GHome Smart Ceiling Fan& Light Dimmer Switch

### Step 1

Shut OFF the power at the circuit breaker for the switch you are replacing.



You may need to shut OFF more than one circuit breaker/switch to make sure the switch you're working on is

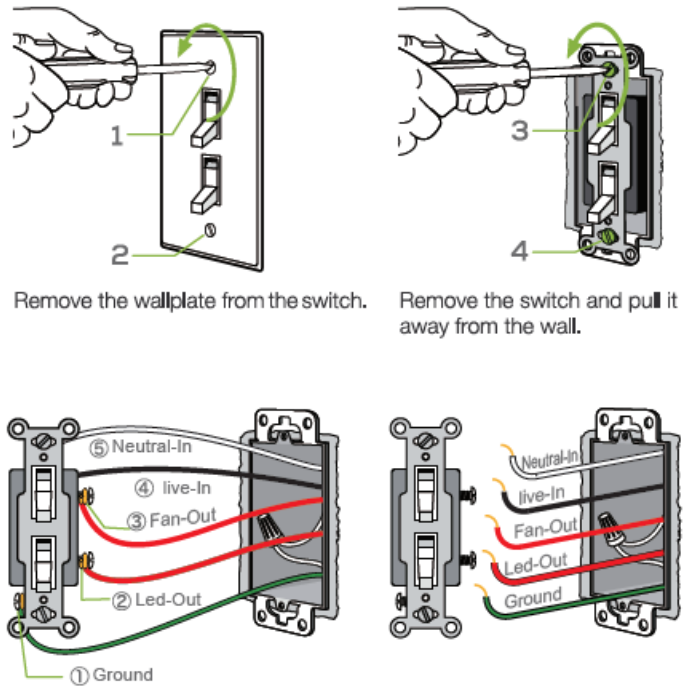
powered OFF.

**IMPORTANT:**

USE A NON-CONTACT VOLTAGE DETECTOR OR FLIP YOUR LIGHT SWITCH A FEW TIMES TO MAKE SURE THAT THE POWER IS OFF.

**Step 2**

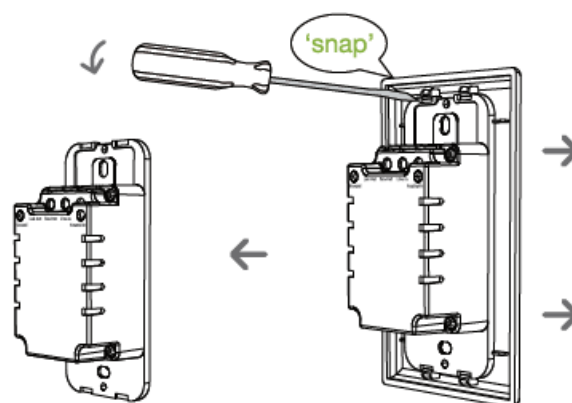
Unscrew and disconnect the wires from the old switch using a screwdriver.



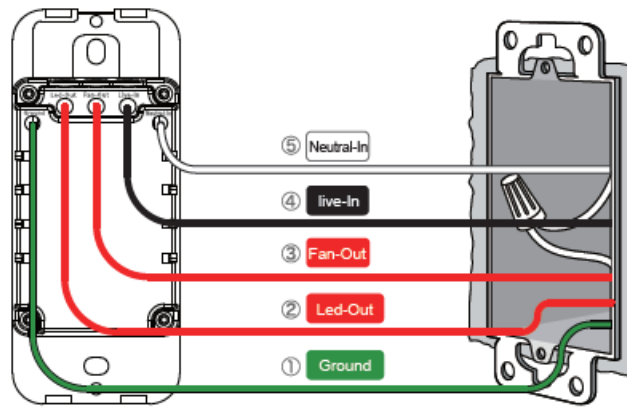
Disconnect all five wires from the switch.

**Step 3**

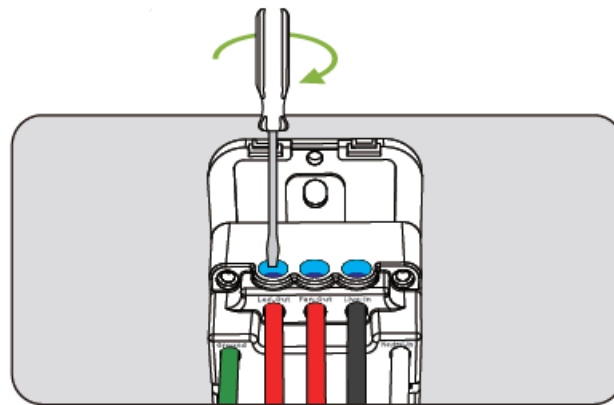
Install the Smart Ceiling Fan& Light Dimmer Switch Insert wire into the terminal, then tighten the screw.



Use a flat-head screwdriver to pry open the panel,



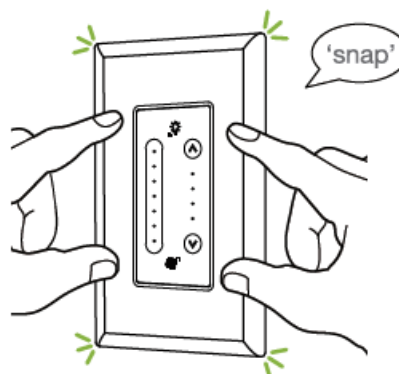
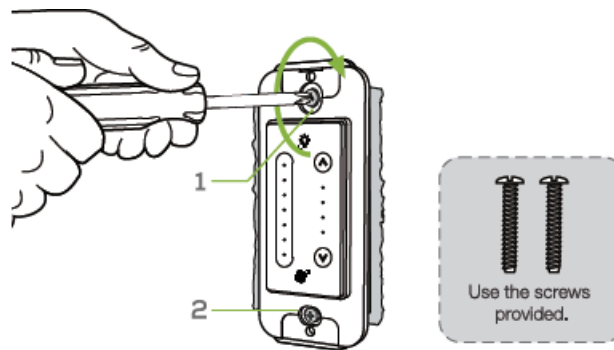
Connect the wires in order.



Tighten the incoming wires.

#### Step 4

Mount the device using the provided screws.

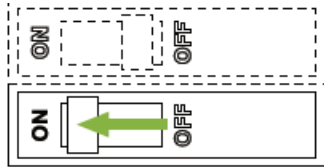


Close the top cover.

(If you installed the dimmer next to other dimmers or switches, you'll need to install a wallplate with the correct size/number of openings to accommodate all the devices.)

## Step 5

Turn the power on at the circuit breaker.



## How to Download the Gosund App

- **Option 1:**

Search for 'Gosund' in the Apple APP Store or download page.

- **Option 2:**

- Scan the QR code below to enter the download page.



## How to Pair with the App

1. Open the "Gosund" app and create your Gosund account.
2. Turn on the switch and place it near the router when pairing.
3. Hold the ON/OFF button for 5 seconds and release it when the switch starts to blink slowly to enter the network pairing mode.

Connect your phone to the Wi-Fi router, and click the "+" at the top right corner of the homepage to add a device. You can add a device in two ways.

1. **Bluetooth Auto-Discovery Mode (Recommended)**

The app will suggest you turn on Bluetooth and Wi-Fi on your phone and then select the device you want to add. Enter your Wi-Fi name and Wi-Fi password (supports 2.4G Wi-Fi only), and it will automatically connect to the network.

2. **"Slow Flash" Mode (AP)** If Bluetooth networking fails, you can try AP networking mode. Select "SW19" under "Electrician", enter your Wi-Fi name and Wi-Fi password (supports 2.4G Wi-Fi only), choose "SlowBlink" to ensure the LED indicator blinks slowly, connect your phone to the device hotspot: "SmartLife-XXXX", then return to the app interface, it will automatically connect to the router, completing the configuration.

## Reset

Turn on the power, hold the Reset button for 5 seconds, and let it go when the Switch starts to flash slowly, the reset is successful.

When the Switch is in a new network environment, you need to restore the factory settings, and then reconnect to the network.

## Warnings and Precautions

- Keep it out of the reach of children and pets.
- Do not use this product in humid environments or outdoors. It's for indoor use only.
- Do not place this product near heating devices, like microwave ovens, stoves, or radiators.
- Protect the product from extreme temperatures, direct sunlight, strong jolts, high humidity, moisture, flammable gases, vapors, and solvents.
- Do not disassemble, modify, or repair your device, and ask for help from authorized professionals for device malfunction.
- Do not use the device when it is malfunctioning or visibly damaged.
- Do not store the device for extended periods in poor ambient conditions.
- Never use aggressive detergents such as rubbing alcohol or other chemical solutions because these could damage the casing or even impair the functioning of the product.

**Note:**

The image shown in the manual is indicative only. If there is inconsistency between the image and the actual product, the actual product shall govern.

MADE IN CHINA 4.02.000.1092 v1.0

**FCC WARNING**

This device complies with part 15 of the FCC Rules. Operation is subject to the following two conditions:

1. This device may not cause harmful interference, and
  2. This device must accept any interference received, including interference that may cause undesired operation.
- Any changes or modifications not expressly approved by the party responsible for compliance could void the user's authority to operate the equipment.

**NOTE:**

This equipment has been tested and found to comply with the limits for a Class B digital device, under Part 15 of the FCC Rules. These limits are designed to provide reasonable protection against harmful interference in a residential installation. This equipment generates, uses, and can radiate radio frequency energy and, if not installed and used by the instructions, may cause harmful interference to radio communications. However, there is no guarantee that interference will not occur in a particular installation. If this equipment does cause harmful interference to radio or television reception, which can be determined by turning the equipment off and on, the user is encouraged to try to correct the interference by one or more of the following measures:

- Reorient or relocate the receiving antenna.
- Increase the separation between the equipment and the receiver.
- Connect the equipment to an outlet on a circuit different from that to which the receiver is connected.
- Consult the dealer or an experienced radio/TV technician for help.

To maintain compliance with FCC's RF Exposure guidelines, This equipment should be installed and operated with a minimum distance between 20cm of the radiator and your body: Use only the supplied antenna.

**FCC ID:** 2BGPL-SW19

**Frequently Asked Questions**



- **Q: How do I know if the Smart Ceiling Fan & Light Dimmer Switch is ready for pairing?**

A: If it blinks slowly, it is ready for pairing in Bluetooth Auto-Discovery Mode or AP mode.

- **Q: What should I do if the pairing fails?**

A: Try resetting the device and then attempt to pair again following the instructions provided.

## Documents / Resources



[GHome Smart SW19 Smart Ceiling Fan and Light Dimmer Switch](#) [pdf] User Guide  
SW19, SW19 Smart Ceiling Fan and Light Dimmer Switch, Smart Ceiling Fan and Light Dimmer Switch, Ceiling Fan and Light Dimmer Switch, Light Dimmer Switch

## References

- [User Manual](#)

### Manuals+, Privacy Policy

This website is an independent publication and is neither affiliated with nor endorsed by any of the trademark owners. The "Bluetooth®" word mark and logos are registered trademarks owned by Bluetooth SIG, Inc. The "Wi-Fi®" word mark and logos are registered trademarks owned by the Wi-Fi Alliance. Any use of these marks on this website does not imply any affiliation with or endorsement.