

**GHome<sup>Smart</sup>**  
**KD10 Palm Vein**  
**Recognition Wi-**  
**Fi Smart Lock**



# GHome Smart KD10 Palm Vein Recognition Wi-Fi Smart Lock User Guide

[Home](#) » [GHome Smart](#) » GHome Smart KD10 Palm Vein Recognition Wi-Fi Smart Lock User Guide 

## Contents

- [1 GHome Smart KD10 Palm Vein Recognition Wi-Fi Smart Lock](#)
- [2 Product Introduction](#)
- [3 Specifications](#)
- [4 Parts List](#)
- [5 Installation Overview](#)
- [6 Product Installation](#)
- [7 Programming Instructions](#)
- [8 Add Device](#)
- [9 App Usage Precautions](#)
- [10 How to Use](#)
- [11 Other Product Features](#)
- [12 FCC STATEMENT](#)
- [13 CONTACT](#)
- [14 Documents / Resources](#)
  - [14.1 References](#)

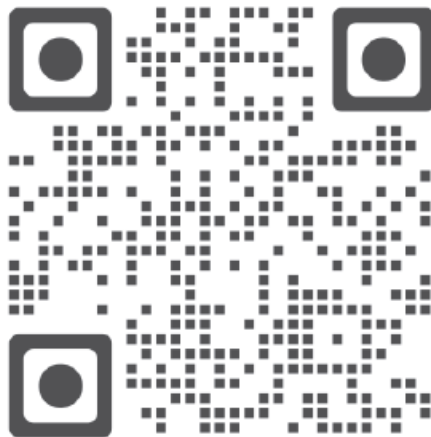


**GHome Smart KD10 Palm Vein Recognition Wi-Fi Smart Lock**



### Online Instructions

- Scan the QR code below for Installation Video, Feature Introduction Video, and more. If you have any questions, feel free to reach out!



### Online Customer Service

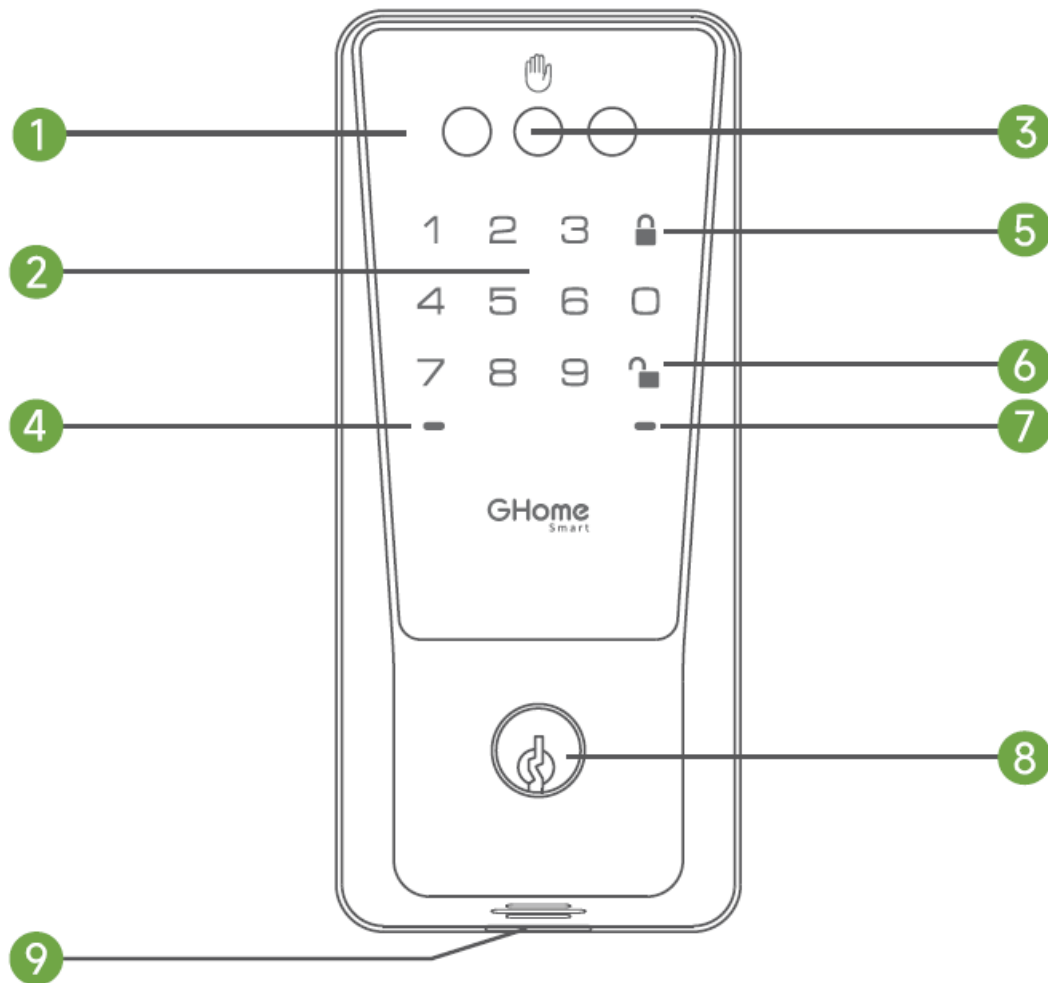
- After-sale Service Tel: 1-[844-394-5218](tel:844-394-5218)

- PST 9 am – 5 pm (Monday-Friday)
- Email: [service@ghomesmart.com](mailto:service@ghomesmart.com)

The products, accessories, user interfaces, etc. in this manual are schematic diagrams for reference only. Due to product updates and upgrades, the actual product and the schematic diagram may differ slightly. Please refer to the actual product

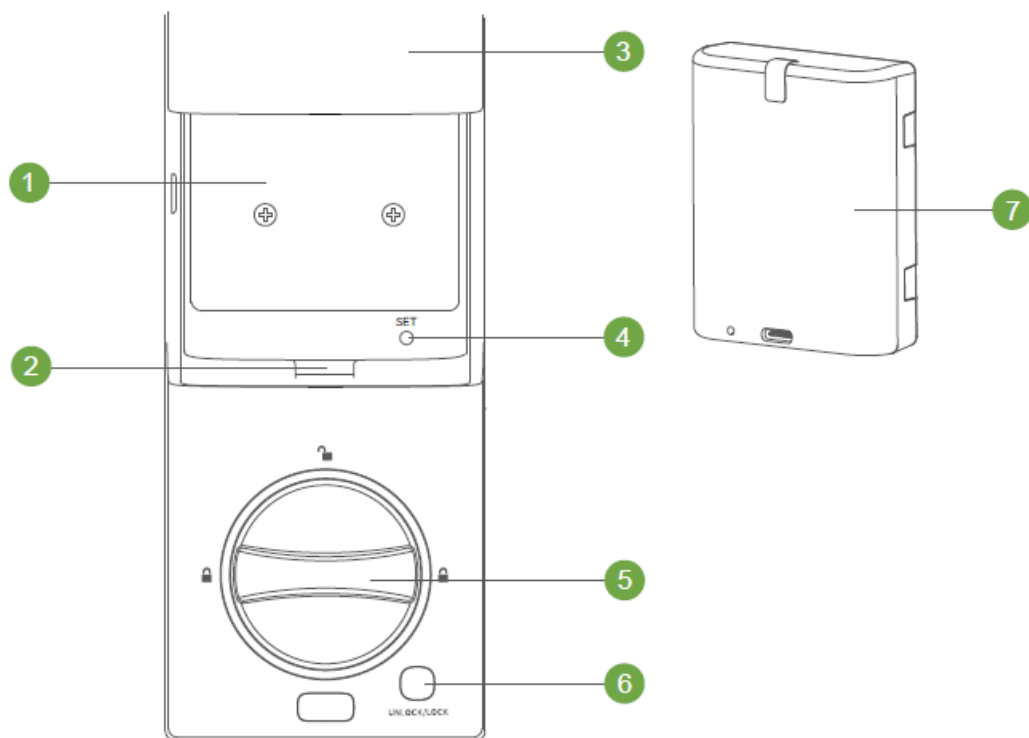
## Product Introduction

### Overview



1. Fill Light: When the palm vein is activated, the fill light lights up.
2. Touch Keypad
3. Palm ID Reader
4. Red Status Light: Abnormal status detected.
5. Lock Button: Press this button to lock the door.
6. Unlock Button: After inputting the right password, press this button to unlock the door.
7. Green Status Light: Succeed(Door Unlock).
8. Keyhole
9. USB Type-C/Emergency Power Supply Port: When the battery runs out, use this port to connect an external 5V/ 1A power supply for temporary operation.

**Note:** The USB port is for charging only and does not support data transfer.



1. Lithium Battery Box
2. Battery Interface
3. Battery Cover
4. SET Button
5. Manual Lock/Unlock Knob
6. Unlock/Lock Button
7. Rechargeable Lithium Battery

## Specifications

Name	Parameter
Product Model	KD10
Unlock Method	Palm Vein, Permanent Password, Temporary Password, APP, Mechanical Key , Alexa & Google Assistant
Palm Vein Capacity	50 pcs
Password Capacity	50 pcs
Password Length	6~8 digits
Power Supply	Rechargeable lithium battery 7800mAh@3.6V
Backup Power Supply	USB Type-C (5V,1A)
Wi-Fi	802.11/b/g/n, 2.4 GHz (only)
Auto Lock	Count down, default 10s
Waterproof Level (Exterior Assembly)	IP54
Working Temperature	-20°C ~ 60°C (Exterior Assembly) -20°C ~ 50°C (Interior Assembly)

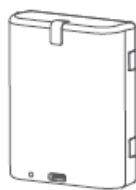
## Parts List



Exterior Assembly



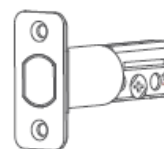
Interior Assembly



Battery



Mounting Plate



Deadbolt



Strike Plate



Strike Box



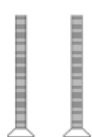
Keys (x2)



Strike Screws  
(x4) 25mm



Silicone Plug  
(x1)



**A**

Mounting Plate  
Screws (x2) 35mm



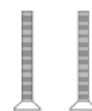
**B**

Interior Assembly  
Screws (x1) 18mm



**C**

Interior Assembly  
Screws (x2) 5mm



**D**

Mounting Plate  
Screws (x2) 28mm

**TOOL REQUIRED (Not Provided)**

- All you need is a manual Phillips screwdriver or an electric Phillips screwdriver.

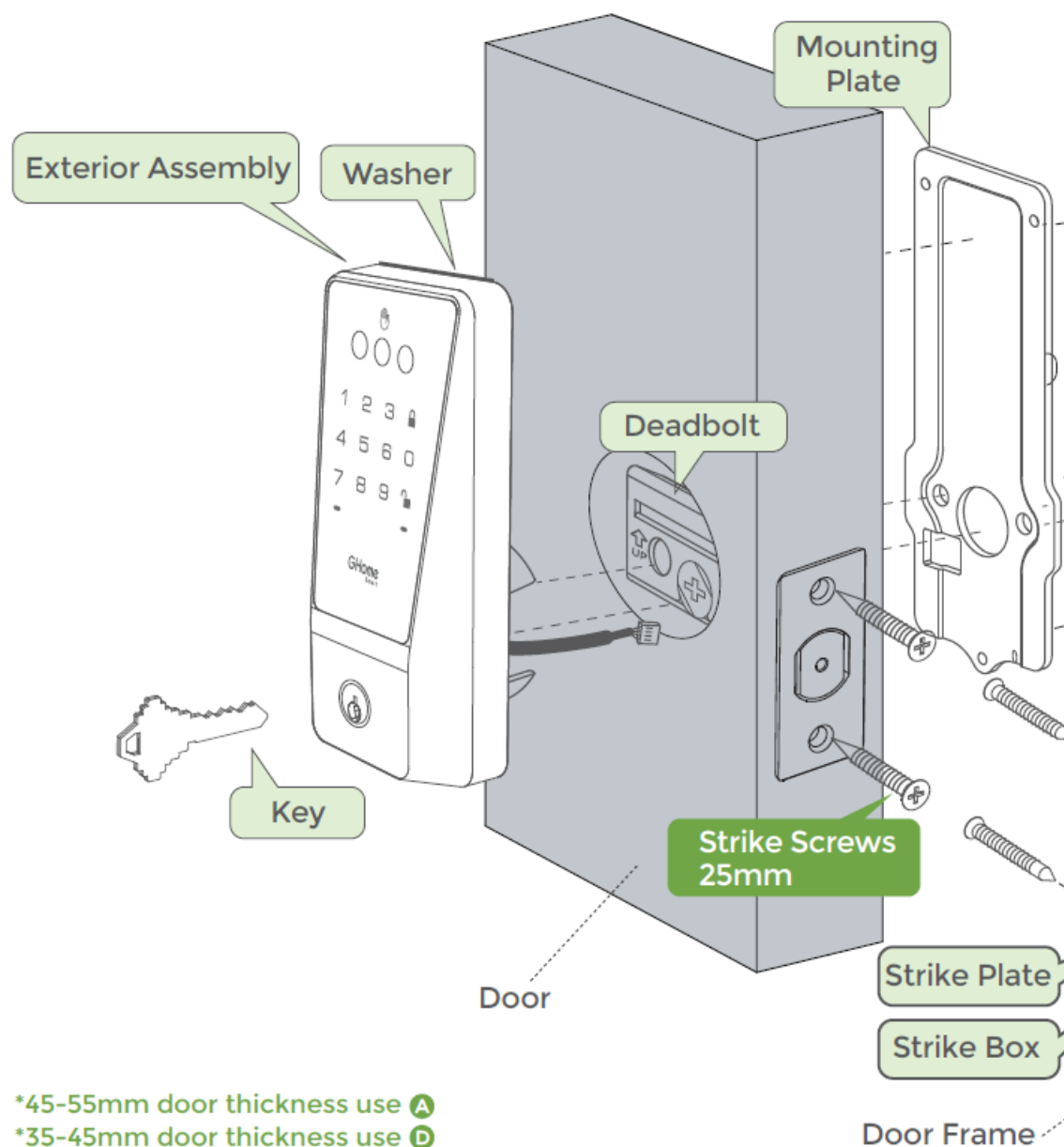


**IMPORTANT:** Do not load batteries until the lock is completely installed.

- Tools necessary only for new doors or adjusting existing preparation.(Not Provided)

					
Drill	Pencil	Wood Mortise Chisel	Tape Measure	Utility Knife	Level

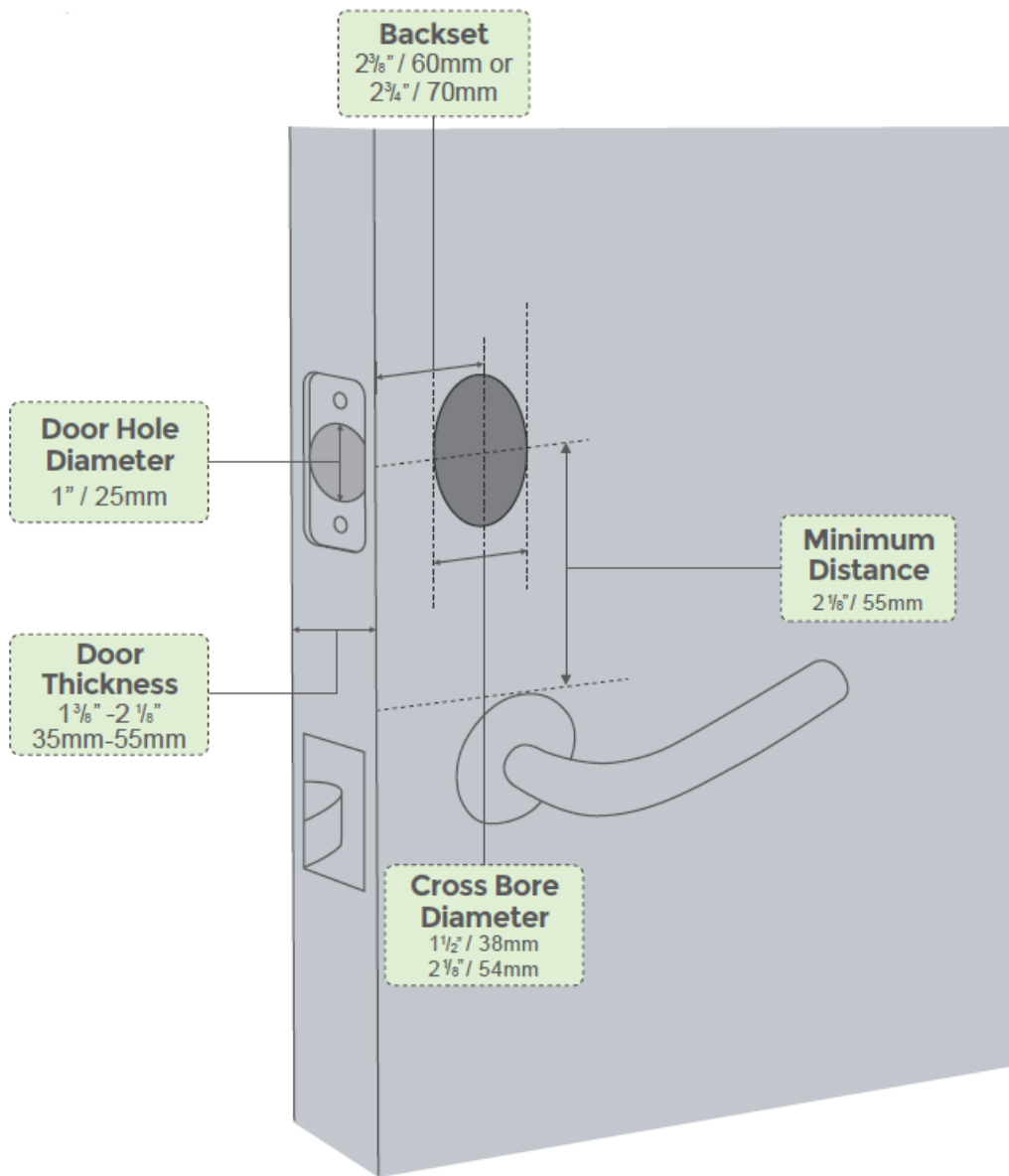
## Installation Overview



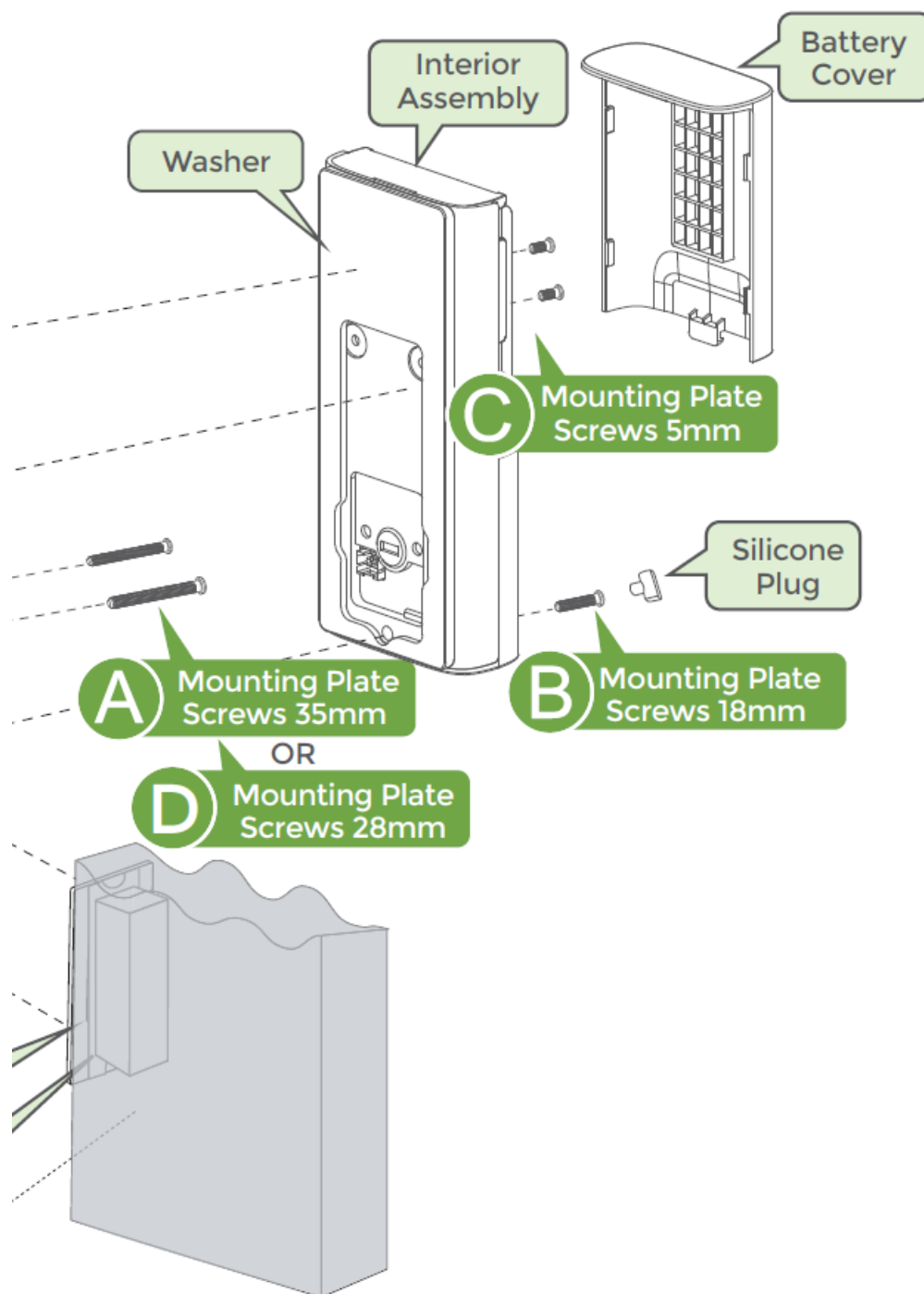
## Product Installation

### Compatible Doors

- Prepare the door and check the dimensions. If the hole size isn't correct, you can drill holes in the door based on the installation template included in the package.



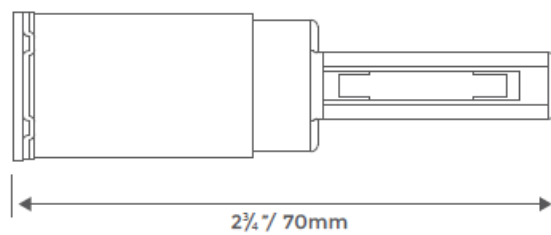
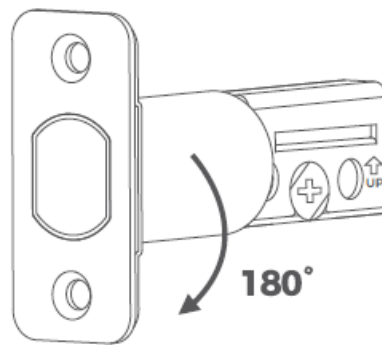
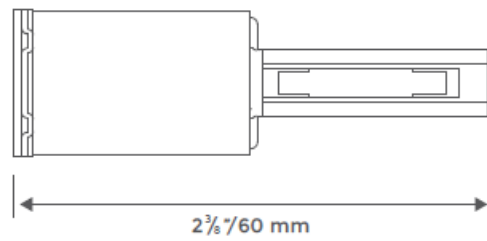




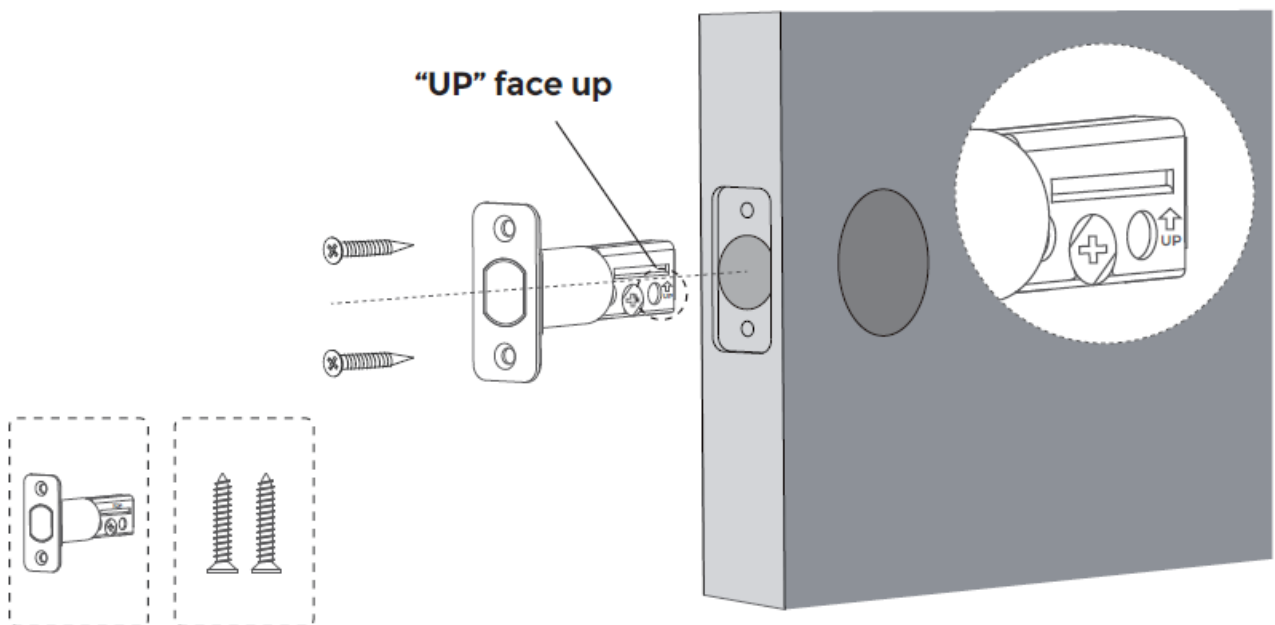
### Step 1. Install Deadbolt

1. Check your door to see if the deadbolt requires adjustment.

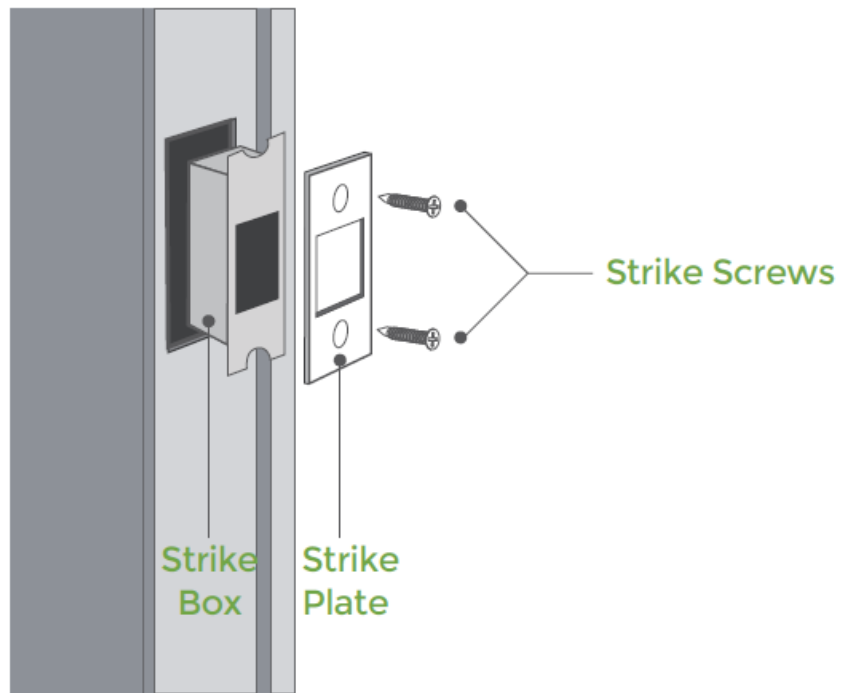
If the backset is 70mm, turn the faceplate 180° to extend the length.



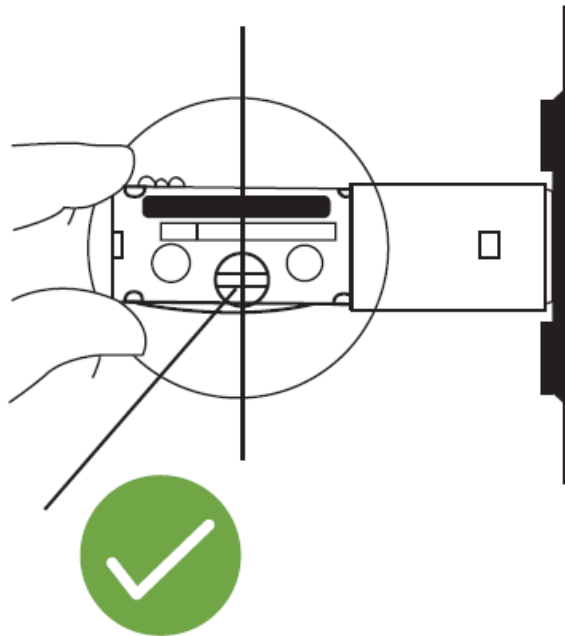
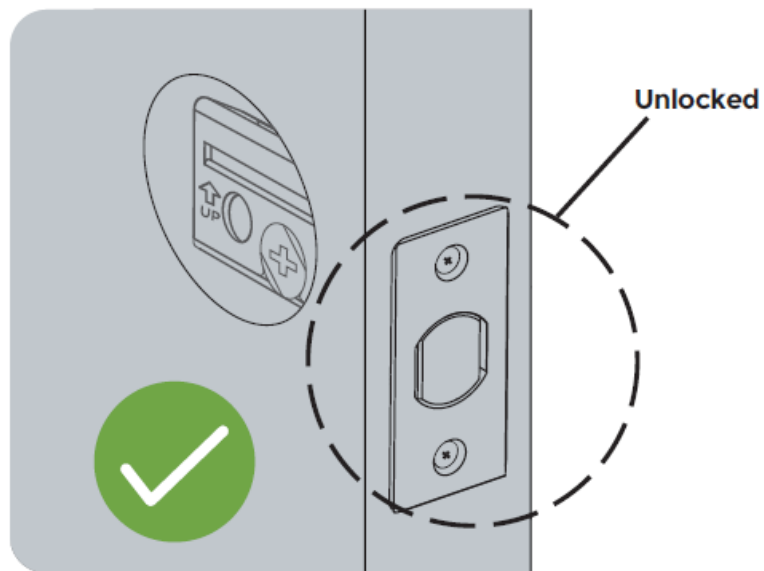
2. Insert and screw the deadbolt into the door hole.  
Make sure the word "UP" on the deadbolt faces up.



## Step 2. Install Strike Plate

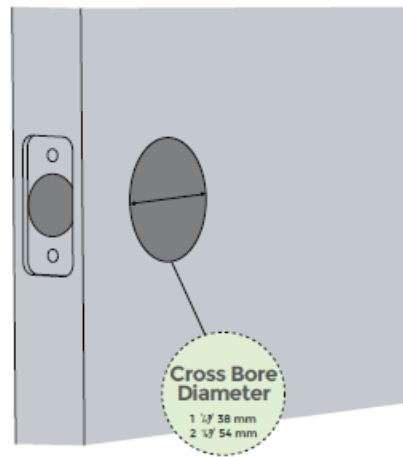
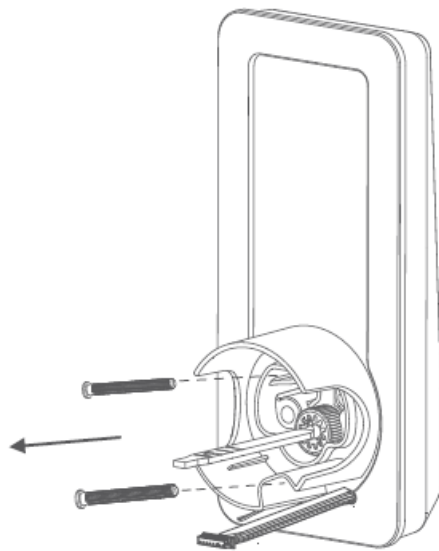


- After the bolt installation is complete, keep the bolt in the unlocked position, and keep the slotted hole centered in the door hole.



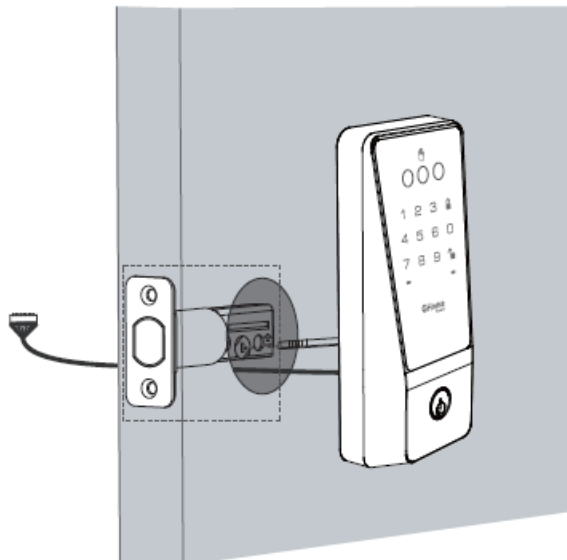
### Step 3. Prepare Exterior Assembly

- If you have a 38mm cross bore, please remove the screw and remove the positioner before installation.
- If you have a 54mm cross bore, please install it directly.

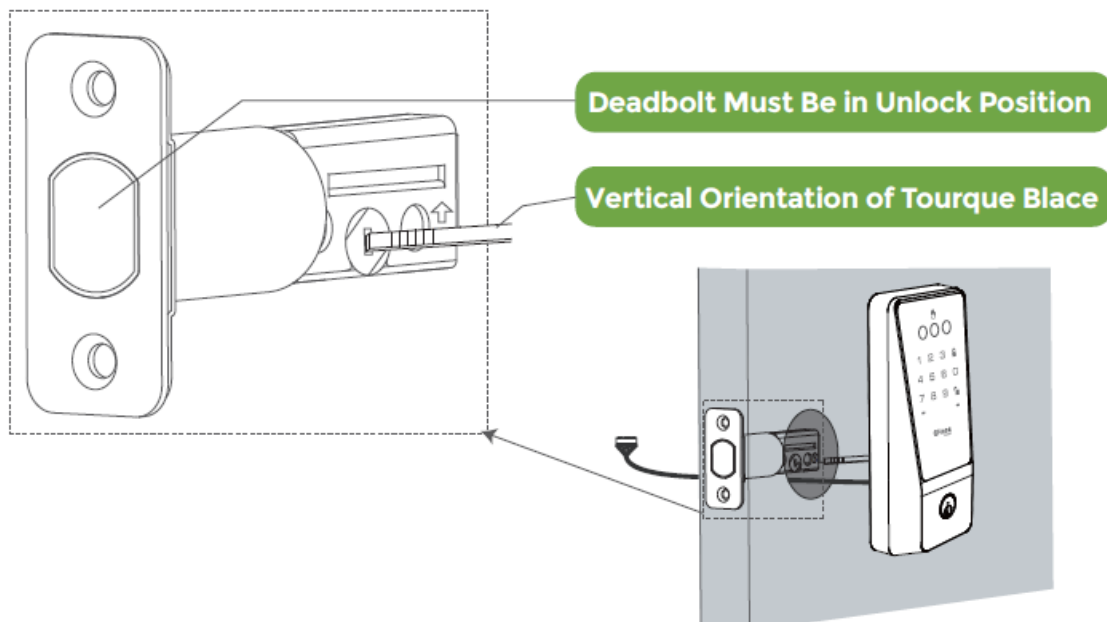


#### Step 4. Install Exterior Assembly

1. Route the cable below the deadbolt.

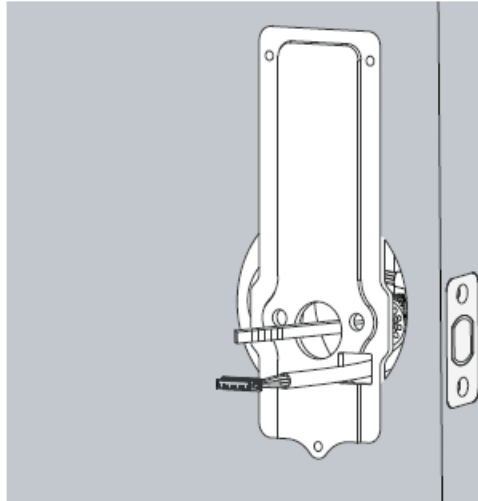


2. Put the exterior assembly into the corresponding position of the deadbolt and press it against the door.

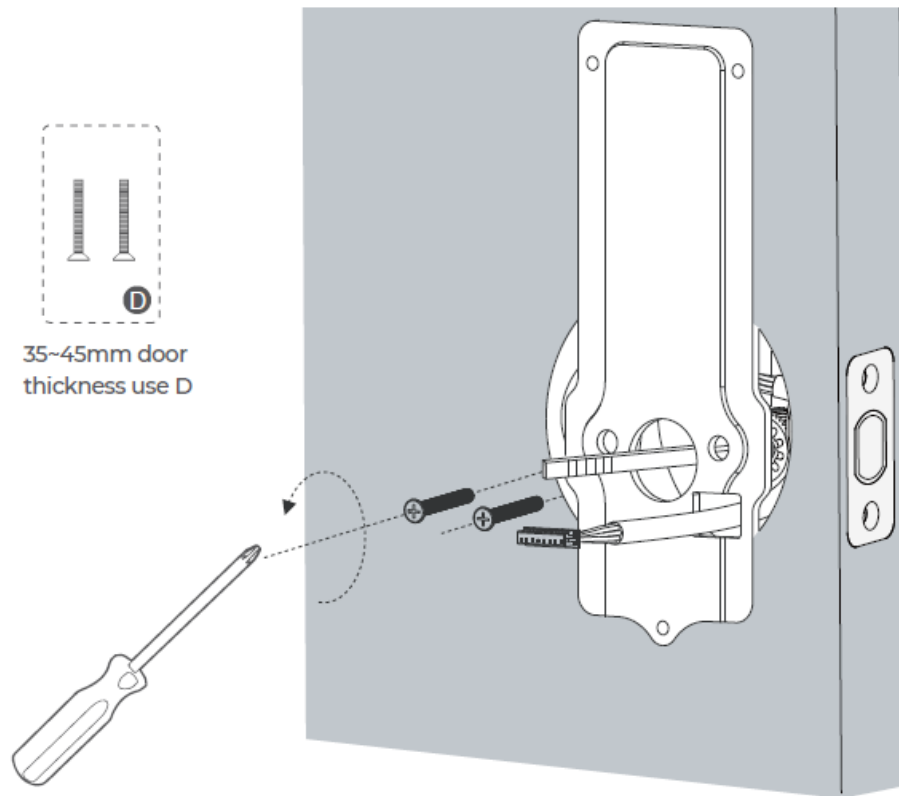
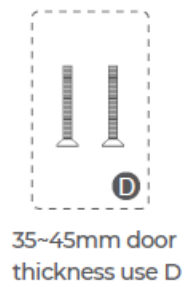
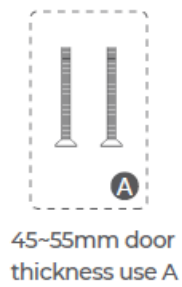


## Step 5. Install Mounting Plate

1. Run the wires through the mounting plate.

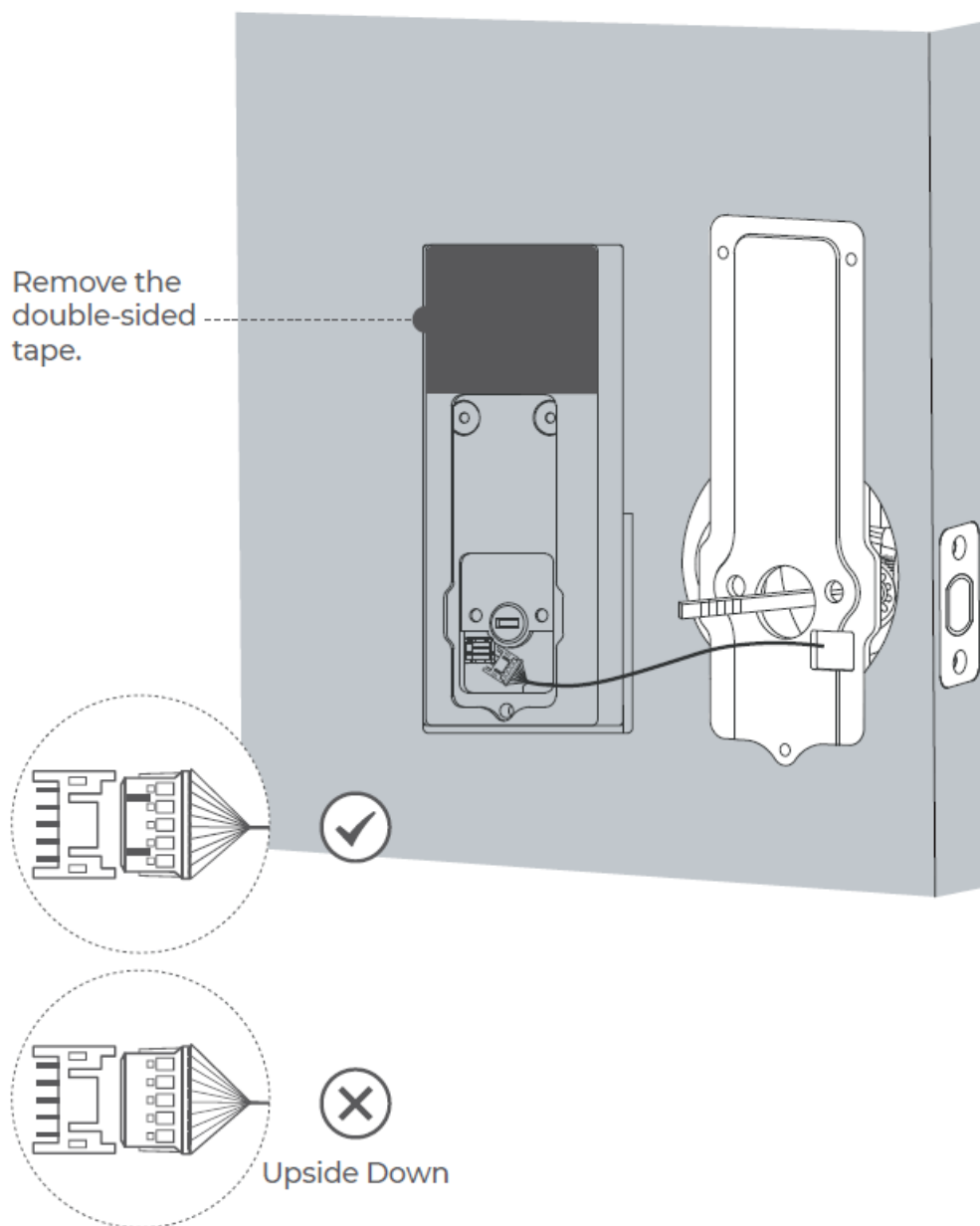


2. Secure the mounting plate with corresponding screws.

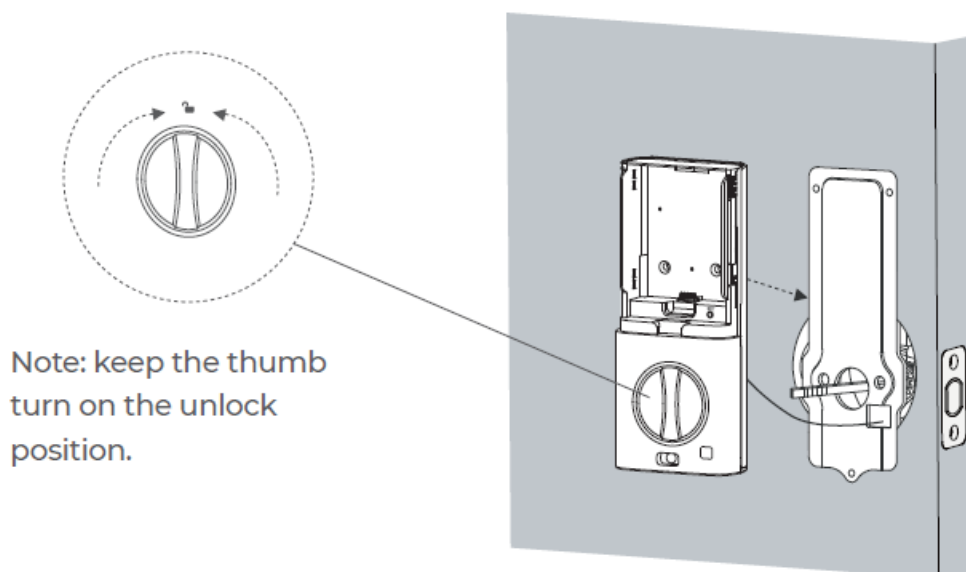


## Step 6. Install Interior Assembly

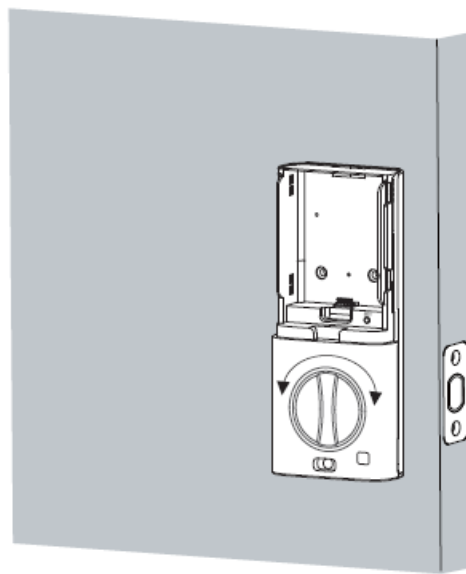
1. Wire to the interior assembly.



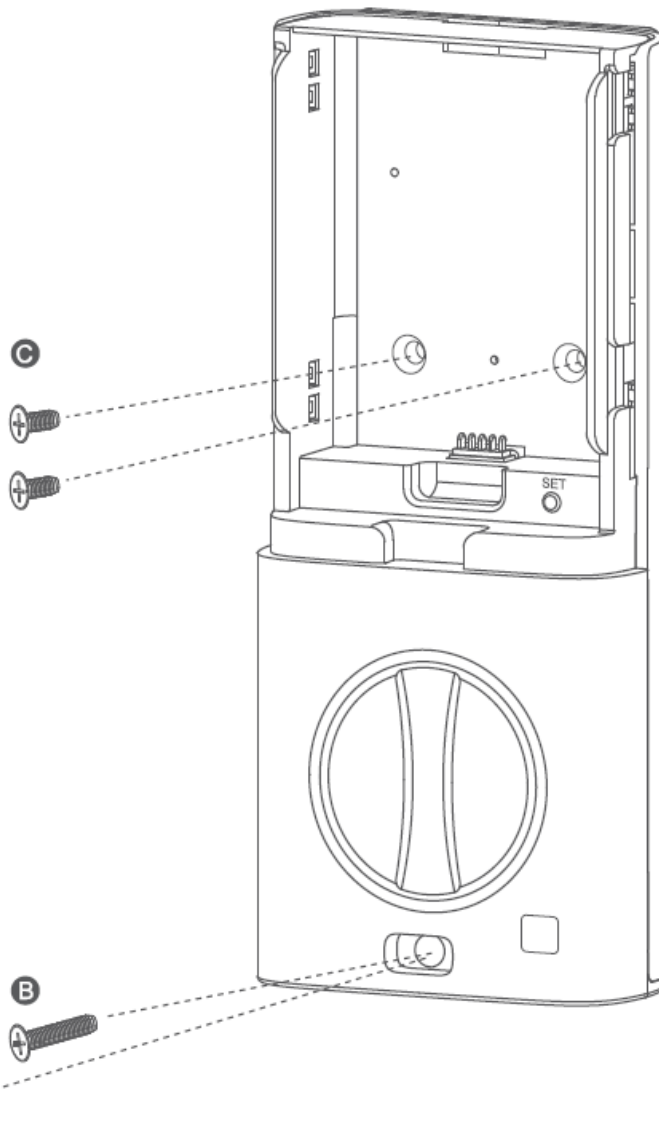
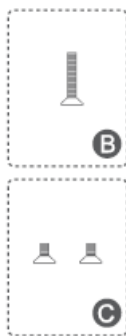
2. Mount the interior assembly. Make sure both wires are tucked into the cabin on the back of the interior assembly.



3. Check if the deadbolt retracts by turning the thumbturn.



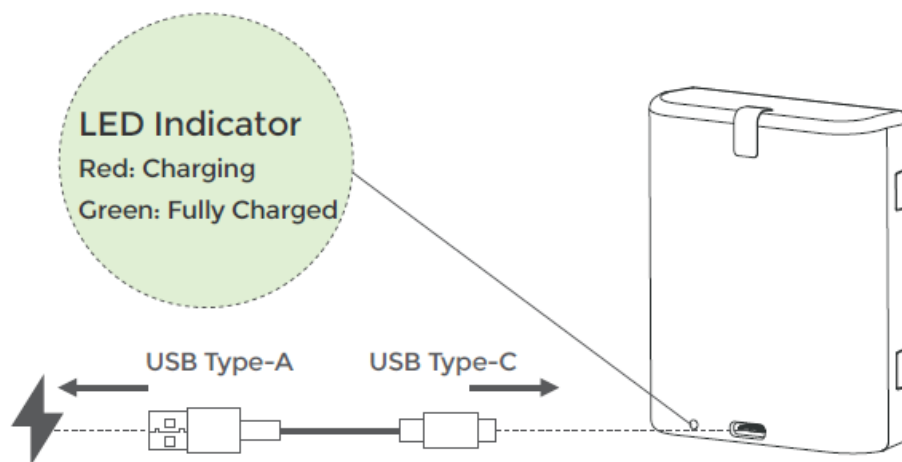
4. Tightly fasten the screws in place, install the silicone plug.



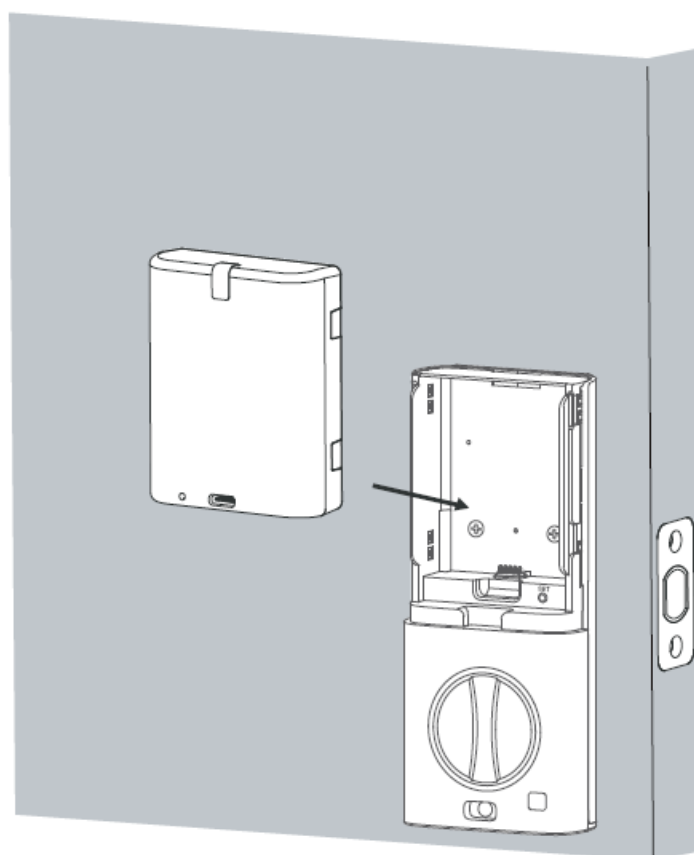
Silicone plug

5. Fully charge the battery before first use. It might take about 6 hours.





- While the door is open and unlocked, load the battery into the interior assemble.



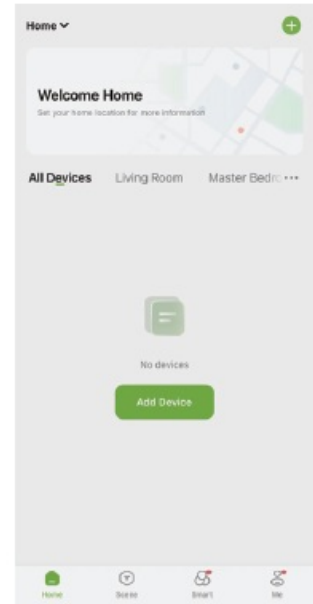
**Note:** Remove the battery cover when setting up the smart door lock, and install the battery cover after the setup is complete.

## Programming Instructions


### App Connection Guide

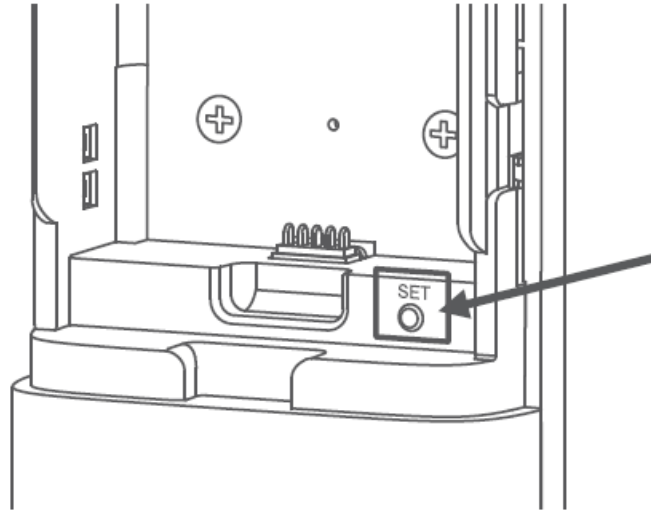
#### APP Download

- Connect your phone to the Wi-Fi router (supports 2.4G Wi-Fi only), scan the QR code below to download and install the app, then sign up for an account.



## Restore Factory Settings

- **Step1:** Press and hold the “SET” button, and after 4 seconds, the lock will start emitting a “beep” sound (7 times).
- **Step2:** Hold the button until you hear the voice prompt: To confirm, Please press the unlock  button.
- **Step3:** Press the unlock button within 4 seconds, you will hear the voice prompt: Factory reset succeeded.





**Note:** After the door lock is restored to factory settings:

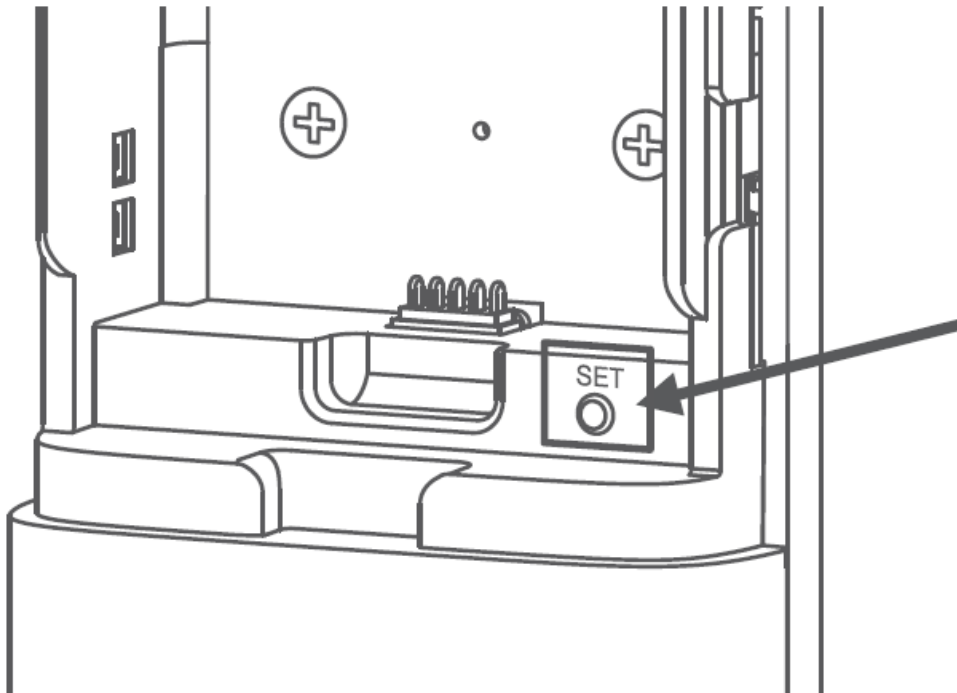
1. Any 6-8-digit password or palm vein can be used to unlock it unless an administrator password is set.
2. You can short-press the “SET” button and follow the voice prompts to set an administrator password.



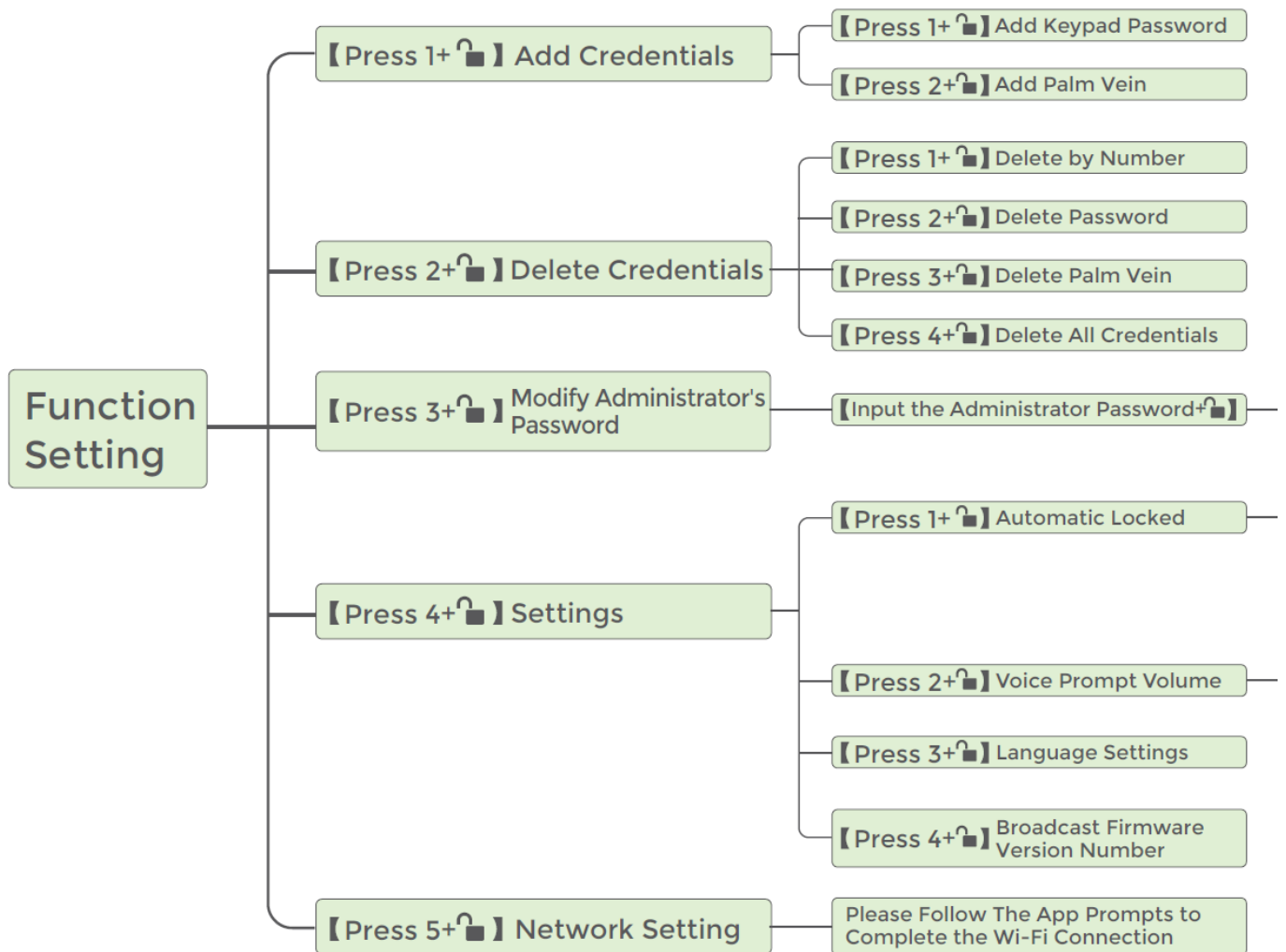
### Set Administrator Password

- **Step1:** Short press the “SET” button on the interior assembly for one second. If no administrator password has been set before, you will hear a voice prompt: Please set the administrator password.
- **Step2:** After inputting the administrator password, press the  button to confirm.
- **Step3:** Follow the voice prompt instructions, enter the administrator password again, and press the  button to confirm.

**Note:** The first time you set the administrator password, you will directly enter the function setting mode.

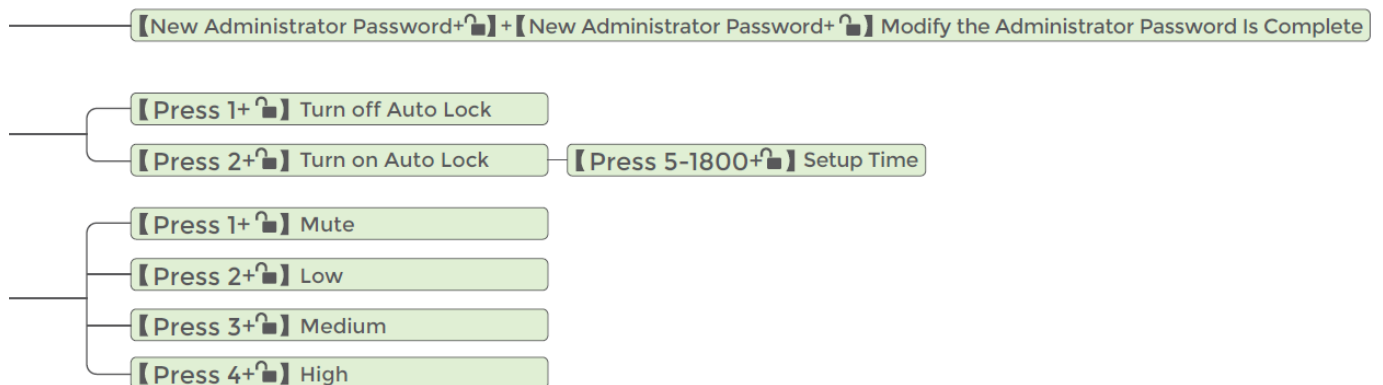


**For reference: Function list of function setting mode**



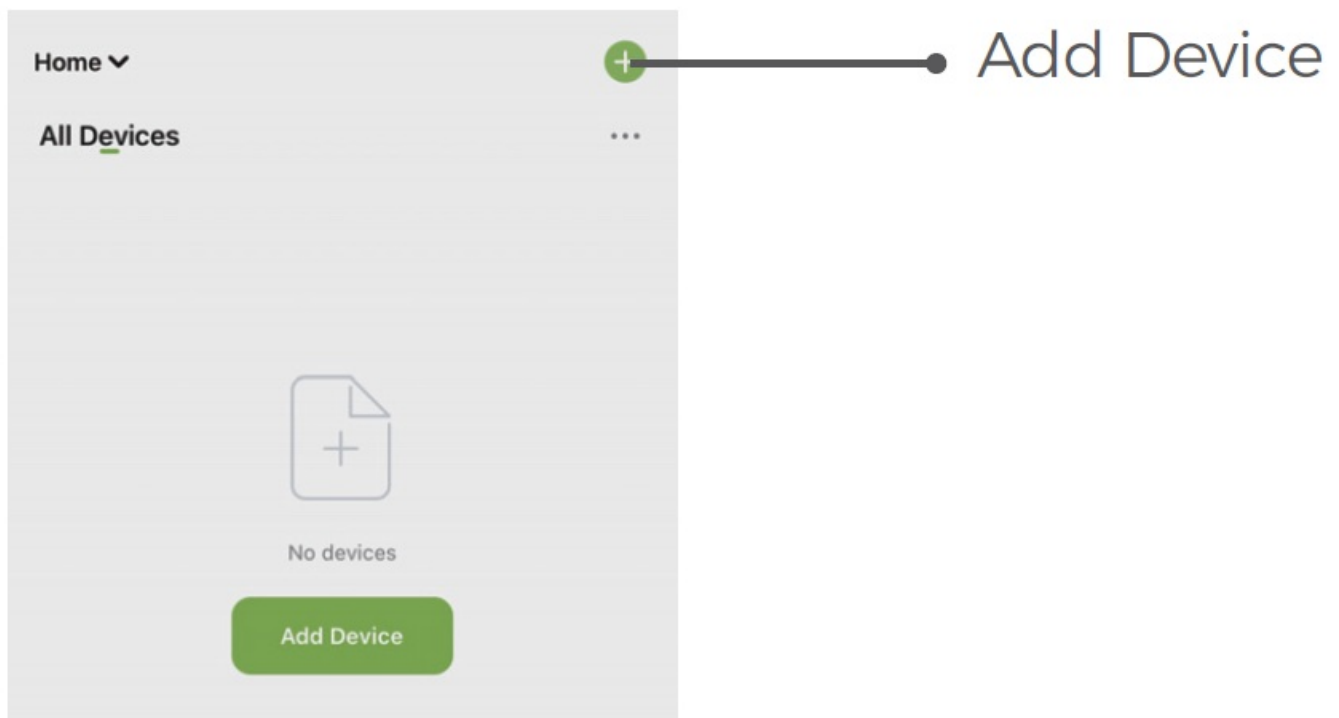
## Enter Network Configuration

- If you are not in function setting mode, and the administrator password has been set, short press the set button, enter the correct administrator password according to the voice and confirm to enter.
- If you have entered function setting mode, press “5” +unlock key, and the voice prompt “Network configuration in progress” will be heard. At this time, the red indicator light starts flashing, which means the door lock has entered the network configuration state.



## Add Device

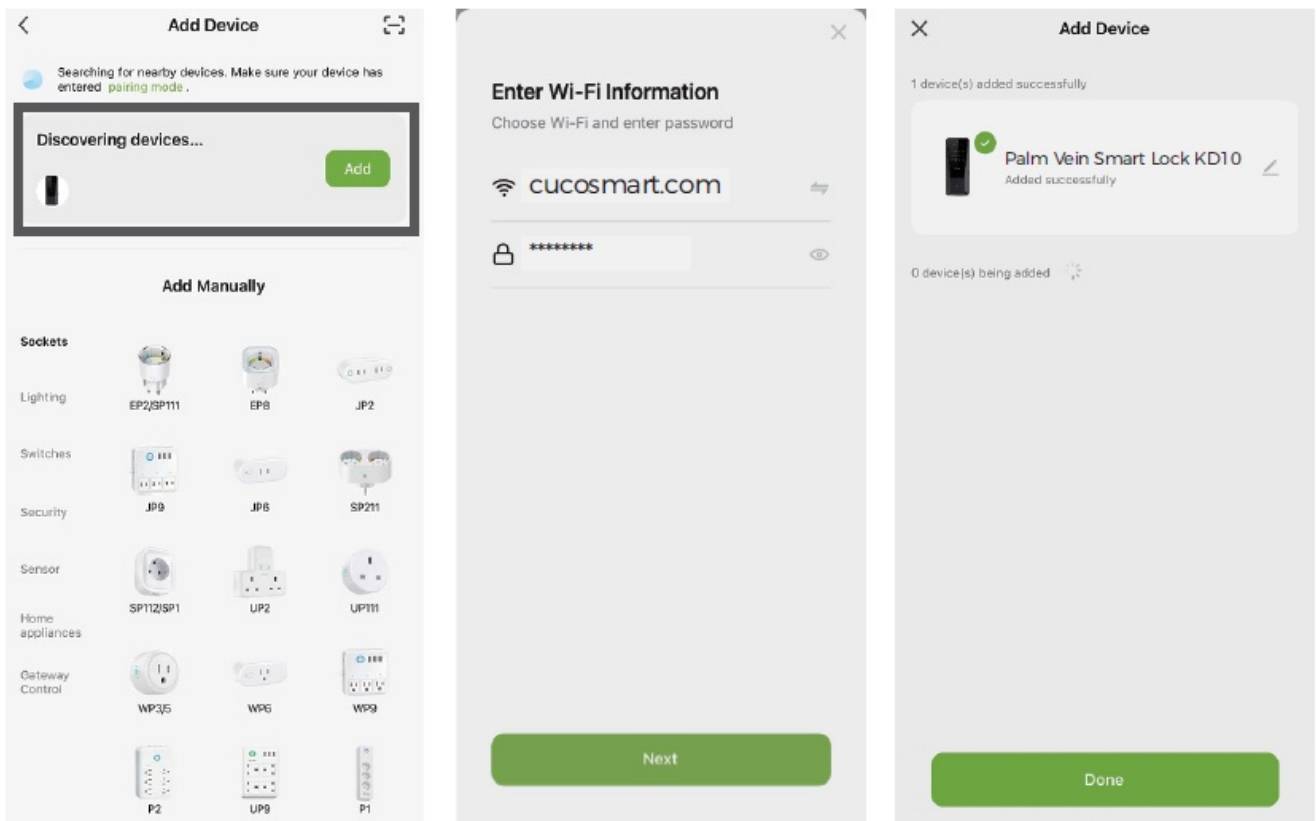
- When the door lock is in the network configuration state, tap the “+” at the top right corner of the homepage to add a device.



You can add a device in two ways.

#### 1. Bluetooth Auto-Discovery Mode (Recommended)

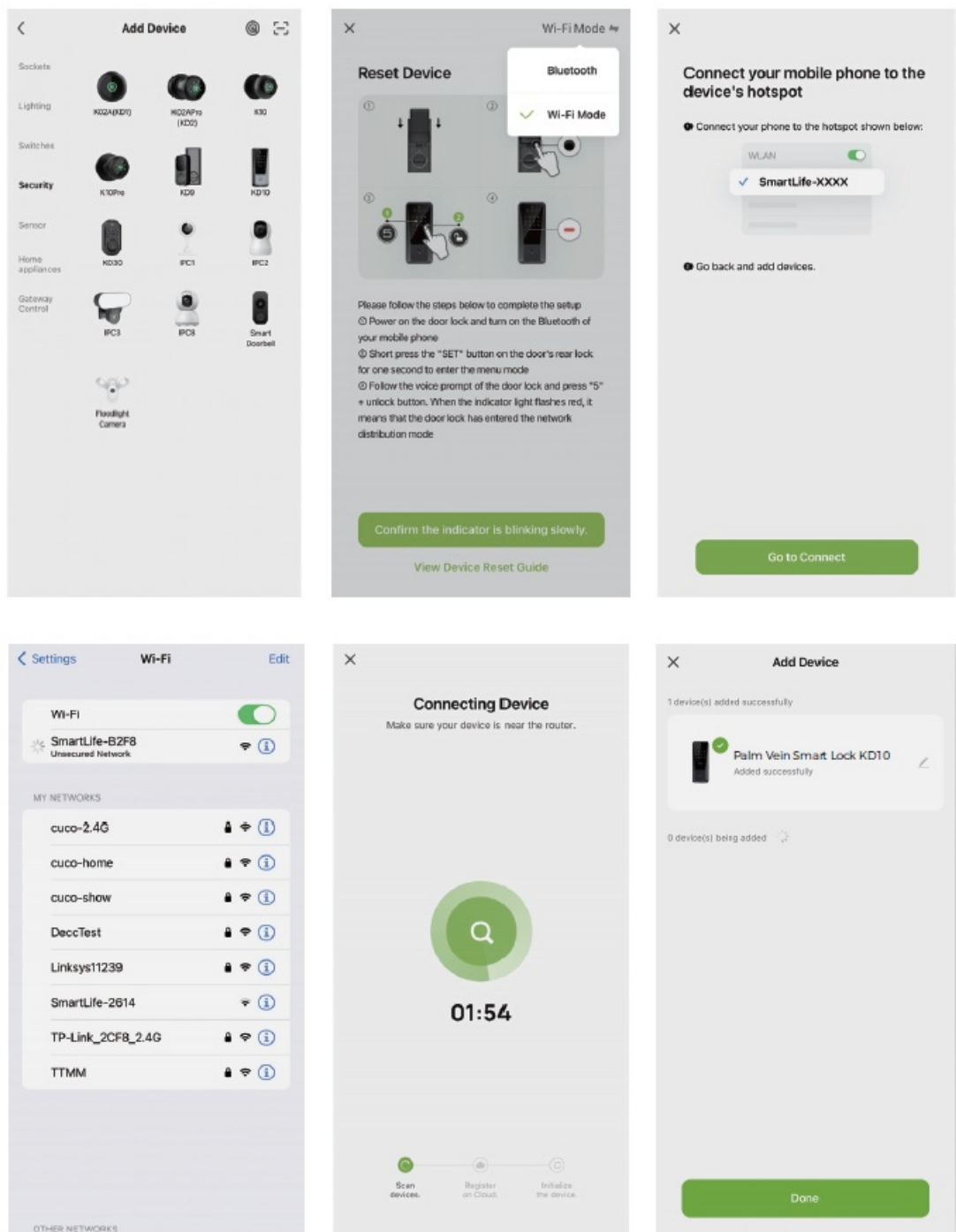
The app will suggest you turn on Bluetooth and Wi-Fi on your phone and then select the device you want to add. Enter your Wi-Fi name and Wi-Fi password (supports 2.4G Wi-Fi only), and it will automatically connect to the network.



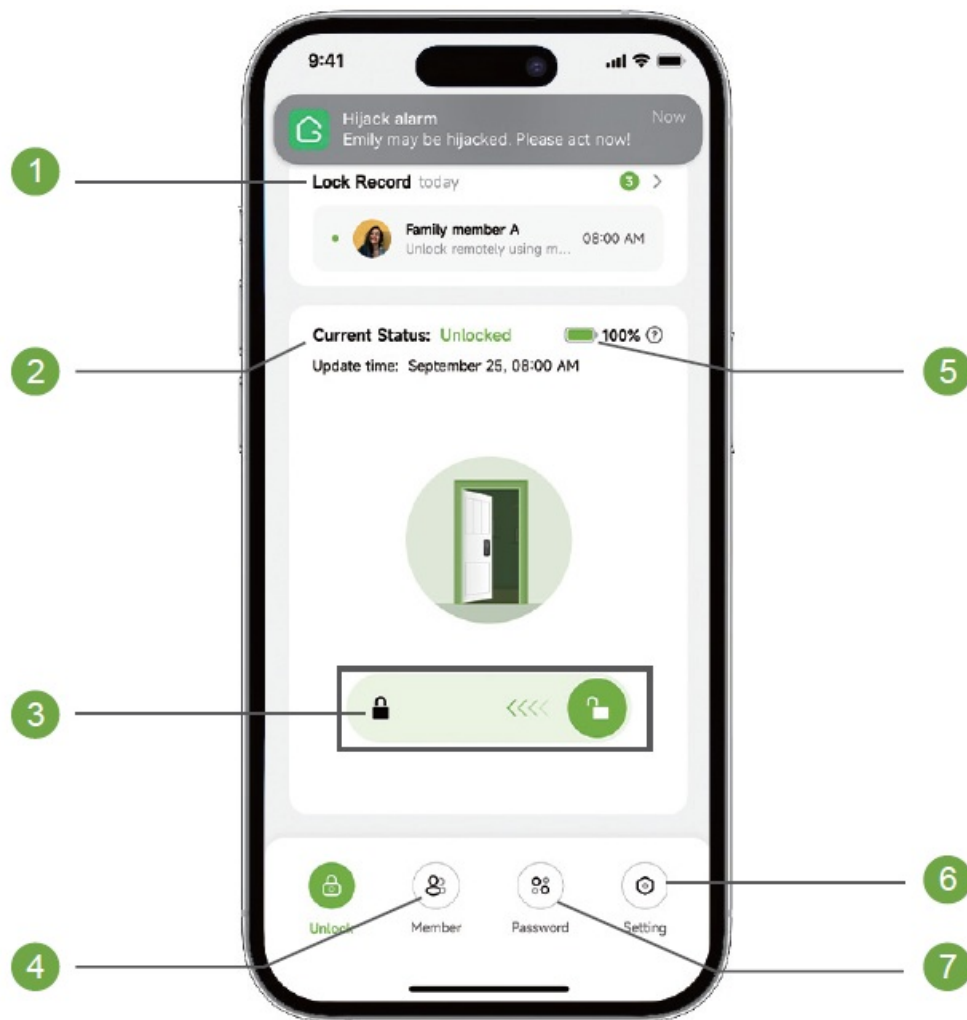
#### 2. Wi-Fi Mode

If Bluetooth networking fails, you can try Wi-Fi networking mode. Select “KD10” under “Security”, enter your Wi-Fi name and Wi-Fi password ( supports 2.4G Wi-Fi only), choose “Wi-Fi Mode” to ensure the KD10 red indicator light is flashing, connect your phone to the device hotspot: “SmartLife-XXXX”, then return to the app

interface, it will automatically connect to the router, completing the configuration.



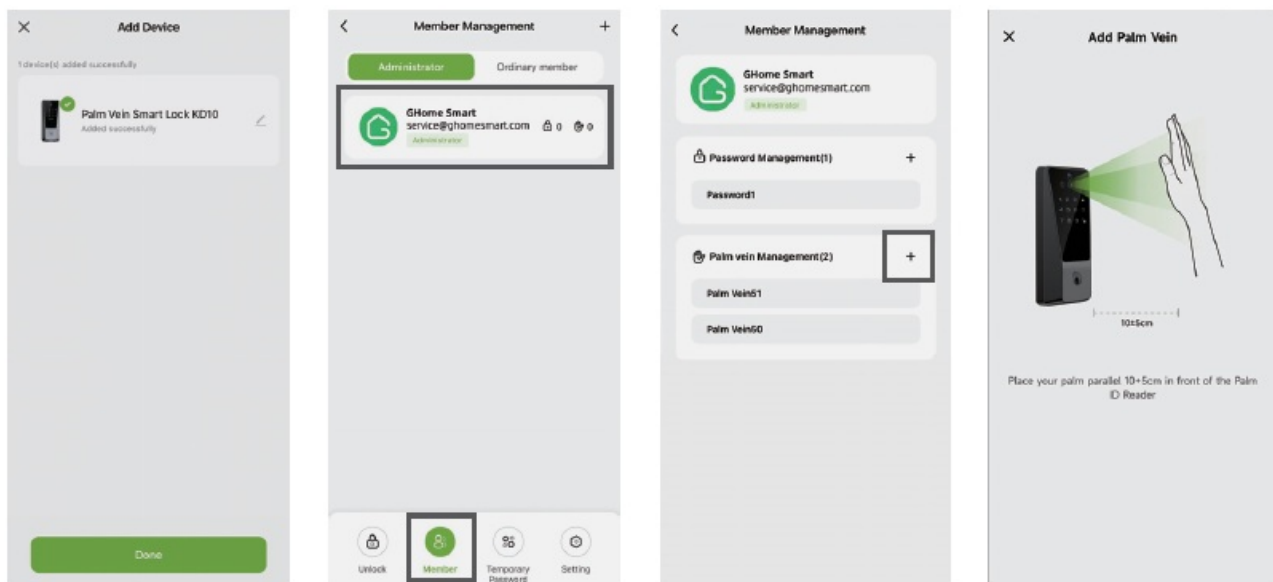
## APP Introduction



1. Lock Record: Door opening record, alarm record
2. Current Lock Status
3. Lock / Unlock: Slide to lock/unlock the door
4. Member: Member management, unlocking method management (palm vein, password)
5. Battery Power
6. Setting: Remote switch, auto lock, silent mode, navigation volume, smart scenes
7. Temporary Password: Includes offline temporary password and online temporary password

### How to Add a Palm Vein ID?

1. Before enrolling your palm vein ID, ensure that the lock has been added successfully.
2. Tap [Member] and select your corresponding account, then tap "+" to add palm vein.
3. Follow the on-screen image guide to enroll your palm vein.
4. Once successful, you'll hear a voice prompt, and the page will display [Palm Vein Added Successfully].



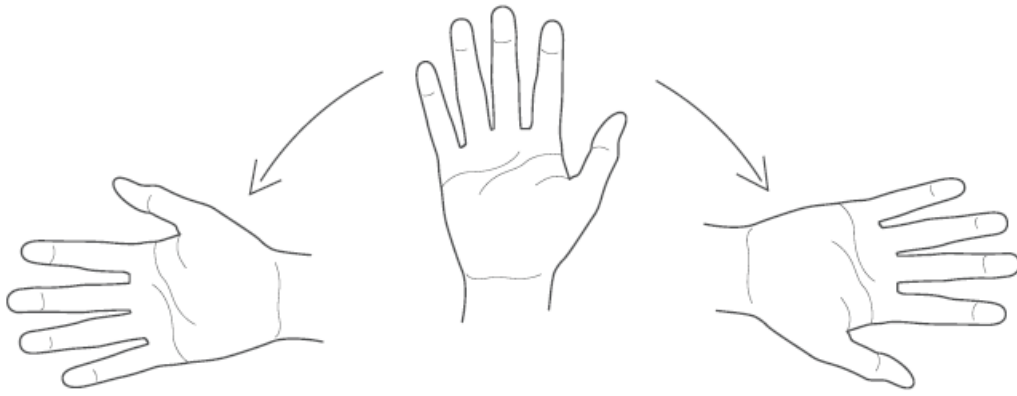
- Of course, you can also enter the function setting mode by short pressing the set button for 1 second, and adding the palm vein based on the voice prompts.



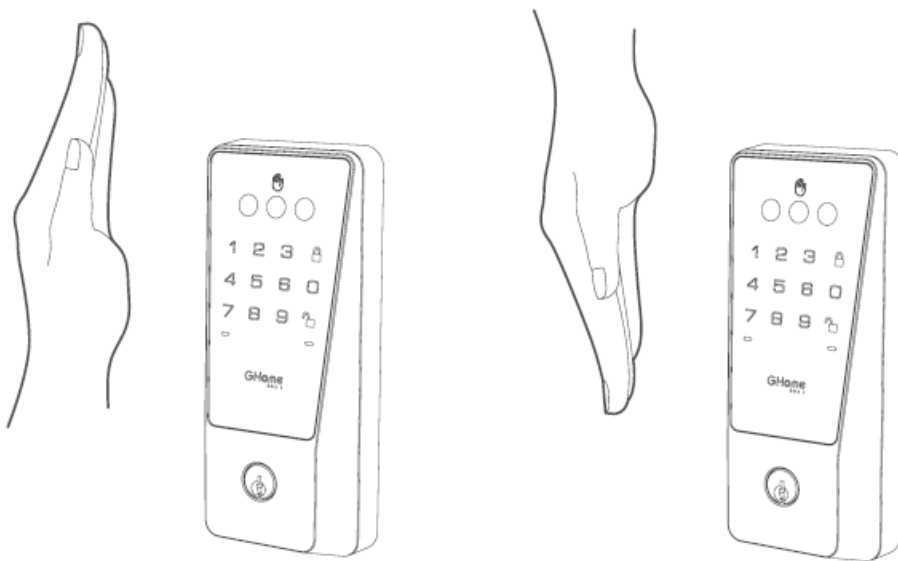
## Tips

- Ensure your palm is about 2"-6" (10±5cm) from the Palm ID Reader. Ensure that nothing covers the Palm ID Reader or your palm. Hold your hand still during the Palm ID enrollment process.
- After adding a Palm ID, the Palm ID reader can recognize any palm direction within a 180-degree range centered on the palm.





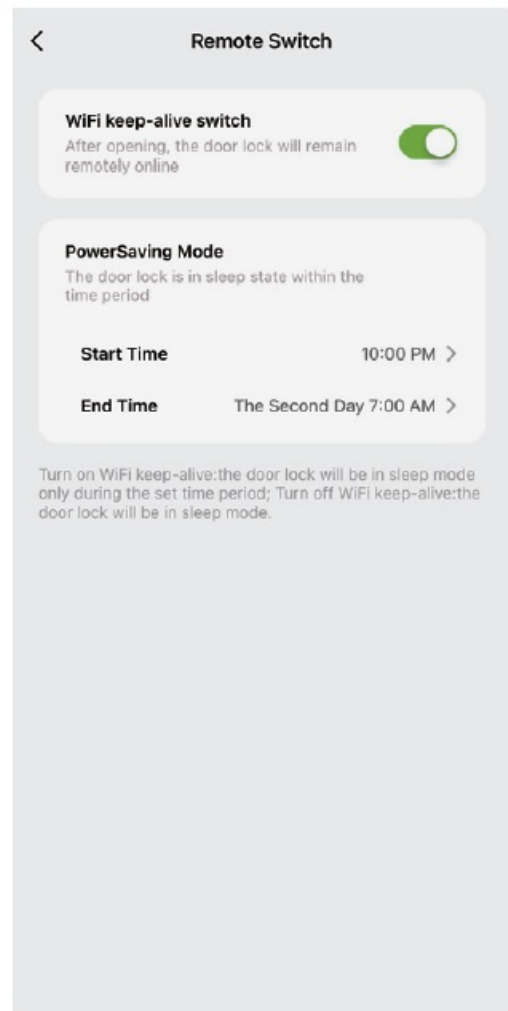
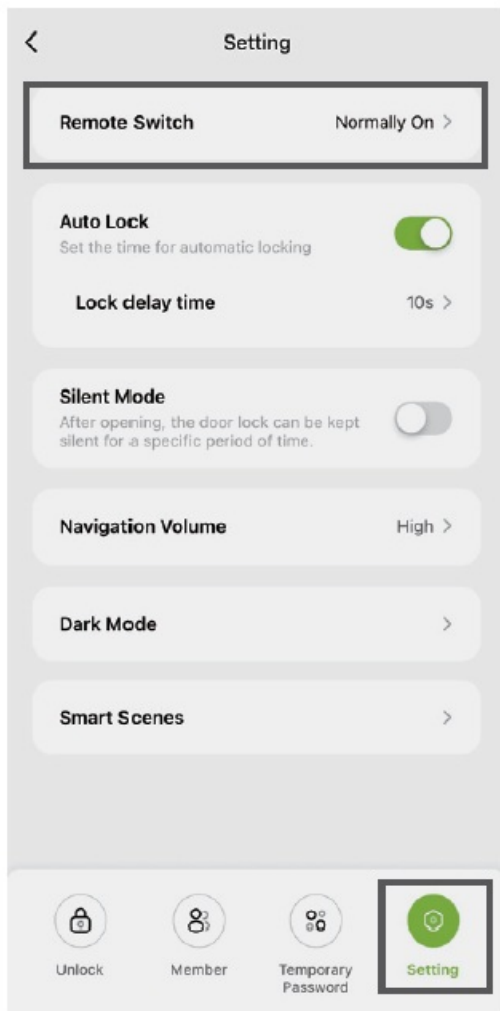
- It is recommended to add two Palm IDs for each palm. Place your palm upward to add the first Palm ID, and place the same palm downward to add the second Palm ID.
- This way, you will be able to unlock the lock regardless of the position of your palm.



## App Usage Precautions

### Enter PowerSaving Mode

The “Remote Switch” function in the “Settings” is “Normally on” by default. when the “Remote Switch” is turned off or the door lock is in the “PowerSaving Mode” time, the door lock will enter the “PowerSaving Mode” to conserve power.



1. The functions of controlling the door lock via the app will no longer be available, including unlocking, and managing palm vein data, or passwords through the app.
2. At this time, you can only view the “Lock Record” through the app. To unlock, add passwords, or register palm veins, you must operate using the door lock keypad.


### Exit PowerSaving Mode

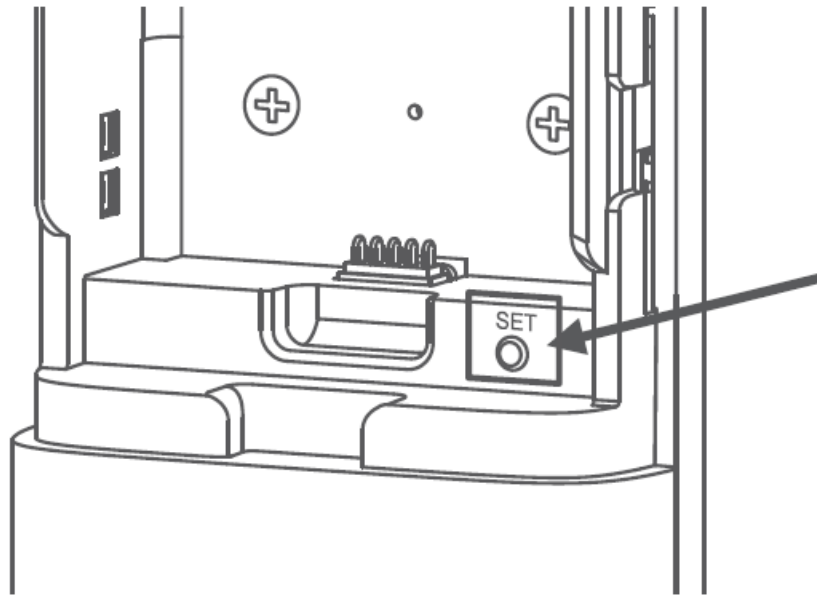
- To exit “PowerSaving Mode”, you must manually wake the door lock using the keypad, wait for the app to reconnect with the lock, and then turn on the “Remote Switch” or reset the “PowerSaving Mode” time.

### Set Up Door Lock Locally

After setting the administrator password on the local door lock, apart from being able to configure your door lock through the app, you can also directly set the relevant settings on the local door lock by following the instructions below.

### Enter the Function Settings Mode

- Short press the “SET” button. You will hear a voice prompt saying, “Please input the administrator password, Press the unlock button to confirm”. Enter the correct administrator password, then press the  button to confirm. If the password verification is successful, you will enter the function setting mode.



## Function List of Local Door Lock

Referring to the previous list of function setting modes, you can directly:

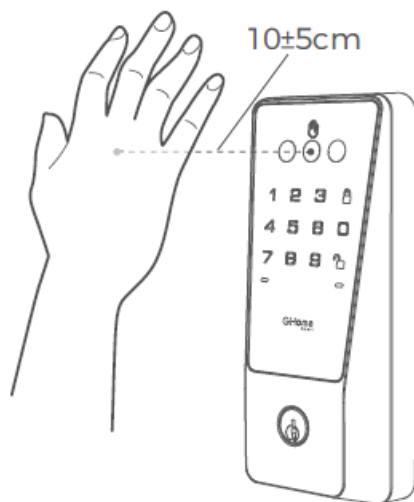
- Add/Delete Credentials
- Modify Administrator's Password
- Voice Prompt Volume
- Language Settings
- Networking Setting

## How to Use

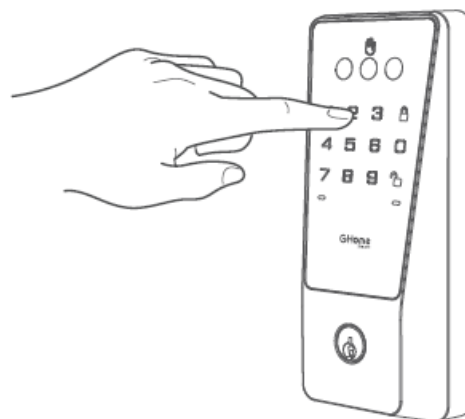
### Unlock from Outside

- The unlocking is successful, the green indicator light is on, and there is a voice prompt for successful unlocking in non-silent mode.
- The unlocking fails, the red indicator light is on, and there will be a voice prompt for unlocking failure in non-silent mode.

### 1 Palm Vein



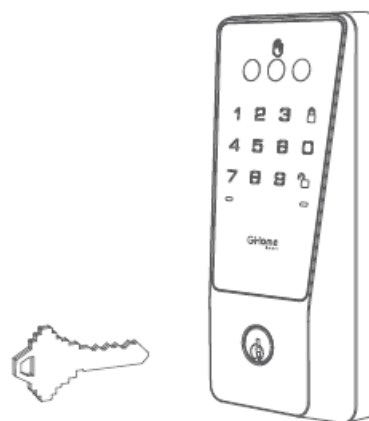
### 2 Permanent Password Temporary Password



### 3 APP



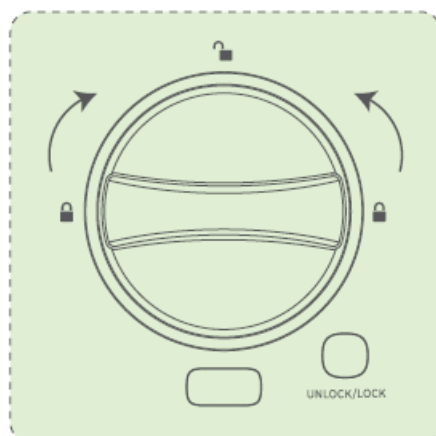
### 4 Mechanical Key



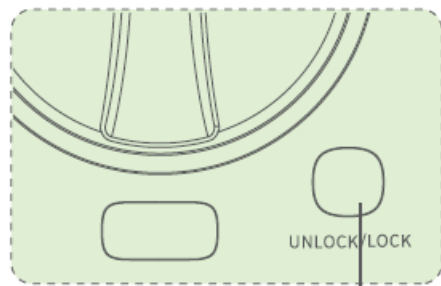
## Unlock from Inside

1. Rotate the thumb turn to unlock position.

**(Note:** Turn right or left according to the actual situation

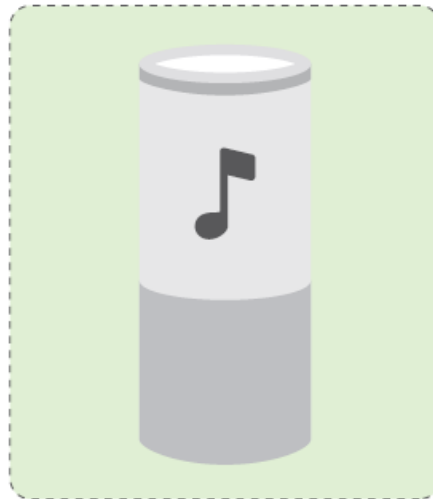


2. Short press the UNLOCK button.



UNLOCK button

### 3. Alexa & Google Assistant



### Lock from Outside

#### 1. Auto lock mode

The deadbolt will extend out automatically within the time set by the APP, the default is 10s.

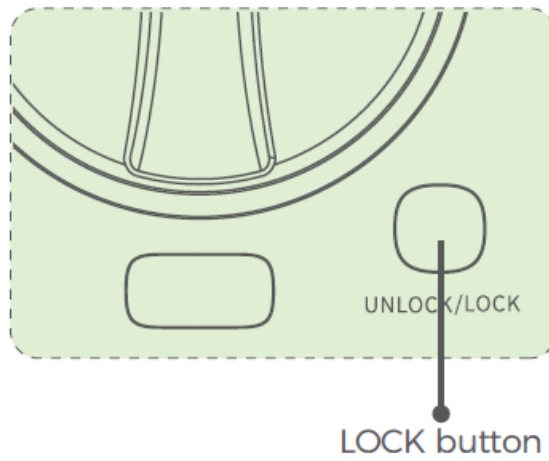
#### 2. Manual mode

Press the lock button “” on the keypad



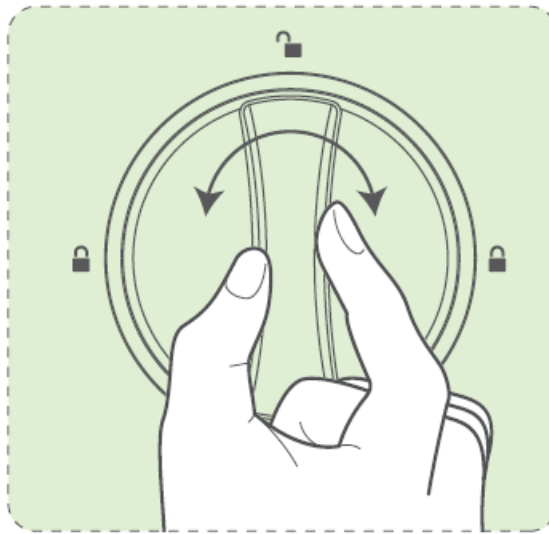
### Lock from Inside

#### 1. Short press the LOCK button.



2. Rotate the thumb turn to the lock position.

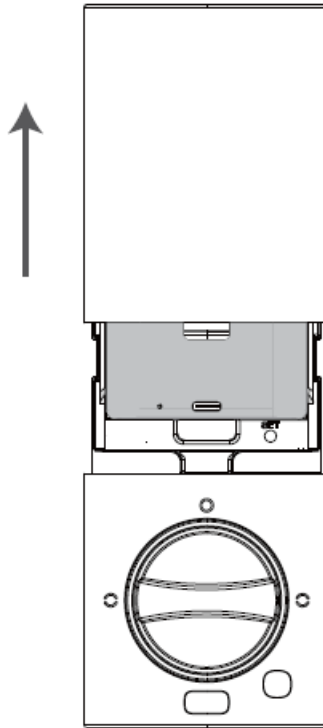
Note: Turn right or left according to the actual situation



### Battery Charging

When the door lock battery is low, charge it as soon as possible.

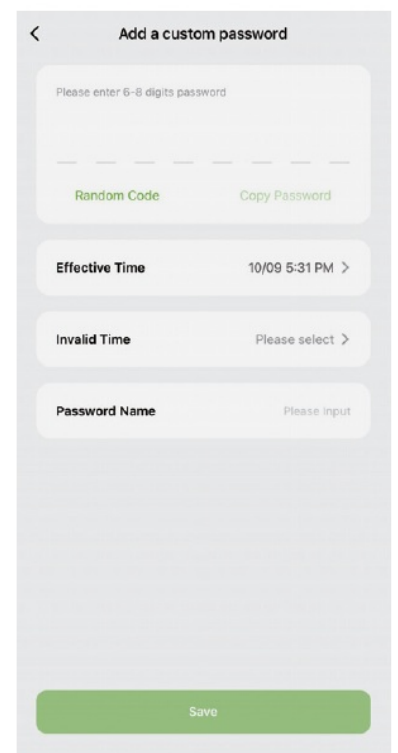
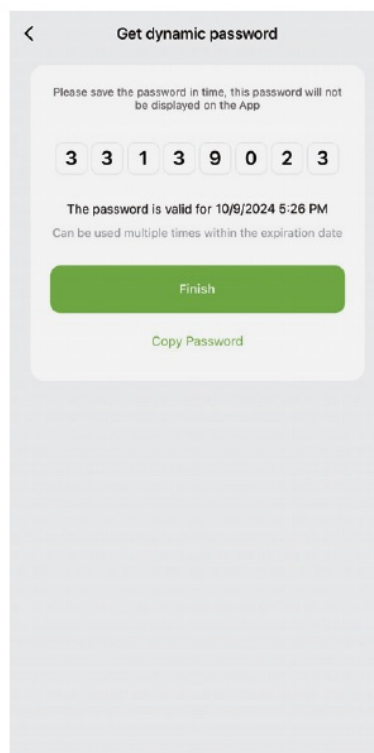
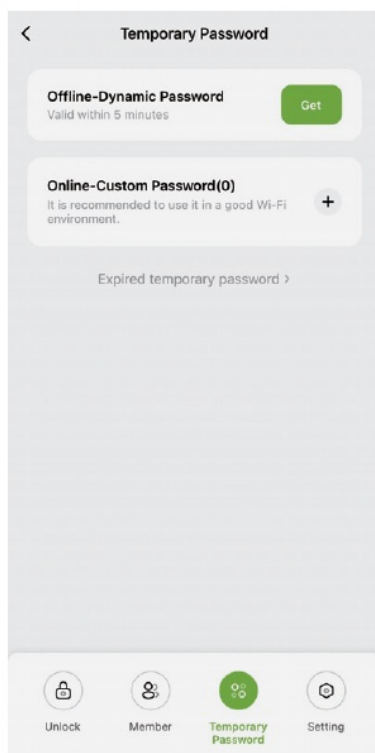
1. Remove the battery cover and take out the battery.
2. Connect the charging cable, the LED will turn red to indicate charging, and green to indicate full charge.
3. Put the battery back into the door lock and cover the battery cover.



## Temporary Password

- Offline dynamic password is 8 digits, valid for 5 minutes, and can be used multiple times before expiration.
- Online-Custom password can customize password and validity period.

**Note:** Online-Custom password is only valid when the door lock is connected to the Internet.



## Other Product Features

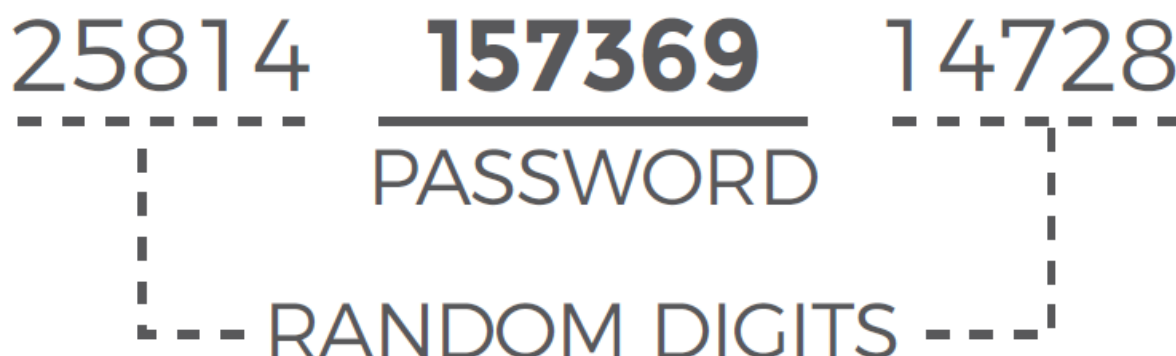
1. Multiple unlocking failure alarms: The password and fingerprint have 5 consecutive trial and error opportunities

within 5 minutes. If exceeded, the system will be locked for 60 seconds, and a local reminder will be given that multiple trials have been locked for the 60s + APP reminder.

2. Low battery alarm: When the battery is lower than 20%, the lock will give a voice prompt, a red light will flash, and the APP will push a [Low Battery Reminder].

The low battery reminder and message push will also be given every time the lock is unlocked.

3. Anti-peeping password: Password length 6-8 digits, support virtual password (support up to 20 digits).



4. Silent Mode: Set the silent mode for a specific period in the APP. During the silent mode, except for the alarm sound, the door lock prompt sound will be muted, so you don't disturb your family when you return home late at night.
5. Volume adjustment: The volume supports APP settings and local settings, with four settings: high/medium/low/mute.
6. Anti-hijacking alarm function: When the user unlocks the lock with the pre-set [Coerced Palm] or [Coerced Password], a reminder will be pushed to the pre-set emergency contact on the APP: "The user administrator unlocks the phone with [Coerced Palm] or [Coerced Password]. A hijacking incident may occur. Please handle it in time!".  
**Note:** [Coerced Palm] or [Coerced Password] is marked on the cloud server when adding a password or palm vein in the app and does not need to be specially marked locally. "
7. Auto Lock: lock the deadbolt automatically with the preset time after unlocking, the function is turned on by default, with a preset delay of 10s, which can be adjusted via the APP or locally. If the function is turned off, door lock will enter the normally open mode, The door lock will only close after manual locking or pressing the lock button locks it.

## Disclaimer

1. Your biometric information is stored locally on the device rather than in the cloud, ensuring your personal information is safe and private.
2. IoT services are provided by Tuya, a third-party company. For information on how Tuya processes data, please refer to Tuya's privacy policy.
3. Do not use the device in the environment at too high or too low temperatures, never expose the device to strong sunlight or very wet environments. The suitable temperature for the product is -20°C to 50°C for the interior lock (Charging mode is 0-45°C), and -20°C to 60°C for the exterior lock.

## Warning

- Replacement of a battery with an incorrect type that can defeat a safeguard;
- Disposal of a battery into a fire or a hot oven, or mechanically crushing or cutting of a battery, that can result in



an explosion;

- Leaving a battery in an extremely high temperature surrounding environment that can result in an explosion or the leakage of flammable liquid or gas;
- A battery subjected to extremely low air pressure may result in an explosion or the leakage of flammable liquid or gas.

## FCC STATEMENT

**Warning:** Changes or modifications to this unit not expressly approved by the party responsible for compliance could void the user's authority to operate the equipment.

This device complies with Part 15 of the FCC Rules. Operation is subject to the following two conditions:

1. this device may not cause harmful interference, and
2. this device must accept any interference received, including interference that may cause undesired operation.

**Note:** This equipment has been tested and found to comply with the limits for a Class B digital device, according to part 15 of the FCC Rules.

These limits are designed to provide reasonable protection against harmful interference in a residential installation. This equipment generates, uses, and can radiate radio frequency energy and, if not installed and used under the instructions, may cause harmful interference to radio communications. However, there is no guarantee that interference will not occur in a particular installation. If this equipment does cause harmful interference to radio or television reception, which can be determined by turning the equipment off and on, the user is encouraged to try to correct the interference by one or more of the following measures:

- Reorient or relocate the receiving antenna.
- Increase the separation between the equipment and the receiver.
- Connect the equipment to an outlet on a circuit different from that to which the receiver is connected.
- Consult the dealer or an experienced radio/TV technician for help.

To maintain compliance with FCC's RF exposure guidelines, the distance must be at least 20cm between the radiator and your body, and fully supported by the operating and installation configurations of the transmitter and its antenna(s).

This device contains license-exempt transmitter(s)/receiver(s) that comply with Innovation, Science and Economic Development Canada's license-exempt RSS(s).

Operation is subject to the following two conditions:

1. This device may not cause interference.
2. This device must accept any interference, including interference that may cause undesired operation of the device.


The device has been evaluated to meet general RF exposure requirements. To maintain compliance with RSS-102 – Radio Frequency (RF) Exposure guidelines, this equipment should be installed and operated with a minimum distance of 20cm between the radiator and your body.

## CONTACT

**Manufacturer: Shenzhen Cuco Smart Technology Co., Ltd.**

- Address: Room 201, 301, Building A, No.12 Difu Road, Guxing Community,
- Xixiang Street, Bao'an District, Shenzhen, 518000, Guangdong, P. R. China
- After-sale Service Tel: 1-[844-394-5218](tel:844-394-5218)
- PST 9 am – 5 pm (Monday-Friday)
- Email: [service@ghomesmart.com](mailto:service@ghomesmart.com)

## Documents / Resources

 <p>Palm Vein Recognition Wi-Fi Smart Lock KD10</p>	<p><a href="#">GHome Smart KD10 Palm Vein Recognition Wi-Fi Smart Lock</a> [pdf] User Guide  2BGPL-KD10, 2BGPLKD10, kd10, KD10 Palm Vein Recognition Wi-Fi Smart Lock, KD10, Palm Vein Recognition Wi-Fi Smart Lock, Vein Recognition Wi-Fi Smart Lock, Recognition Wi-Fi Smart Lock, Wi-Fi Smart Lock, Smart Lock, Lock</p>
--	--

## References

- [User Manual](#)

### Manuals+, Privacy Policy

This website is an independent publication and is neither affiliated with nor endorsed by any of the trademark owners. The "Bluetooth®" word mark and logos are registered trademarks owned by Bluetooth SIG, Inc. The "Wi-Fi®" word mark and logos are registered trademarks owned by the Wi-Fi Alliance. Any use of these marks on this website does not imply any affiliation with or endorsement.