



GHome Smart B09JZDSLNC Series Wi-Fi Smart Switch User Manual

[Home](#) » [GHome Smart](#) » GHome Smart B09JZDSLNC Series Wi-Fi Smart Switch User Manual 

Contents

- [1 GHome Smart B09JZDSLNC Series Wi-Fi Smart Switch](#)
- [2 Parameters](#)
- [3 Package Includes](#)
- [4 How to download the APP](#)
- [5 Installation](#)
- [6 How to connect Alexa or Google Assistant](#)
- [7 WARNING](#)
- [8 FCC STATEMENT](#)
- [9 Warranty Term](#)
- [10 Documents / Resources](#)
 - [10.1 References](#)
- [11 Related Posts](#)

GHome Smart

GHome Smart B09JZDSLNC Series Wi-Fi Smart Switch



Since the device only supports a 2.4G Wi-Fi connection, please ensure that the mobile phone and the device are connected to 2.4G Wi-Fi simultaneously.

Parameters

- **Model:** SW5
- **Input:** 120V~ 50/60Hz 15A
- **Output:** 120V ~ 50/60Hz 15A Max. Resistive
- **Wi-Fi:** 802.11 b/g/n, 2.4GHz(only)
- **Operating Temp.:** 0~40
- Operating Control
- Type 1
- **Pollution Degree:** 2
- **Impulse Voltage:** 2500V

Package Includes

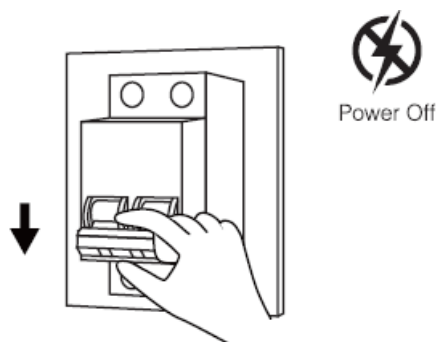
- WiFi Smart Switch x 1
- User Manual x 1
- Accessories x 1

How to download the APP

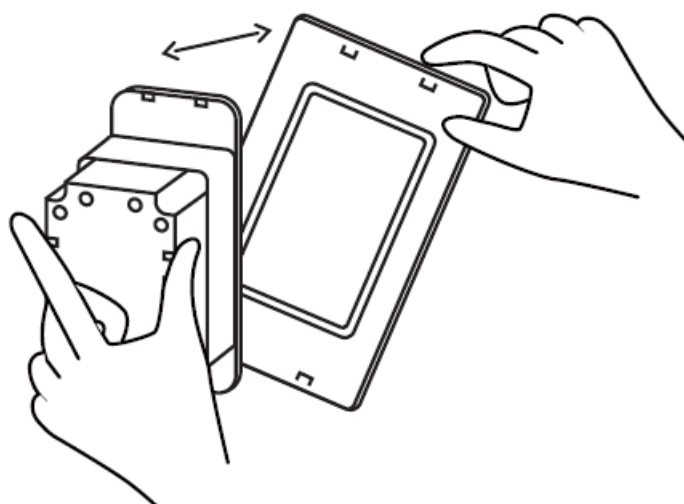
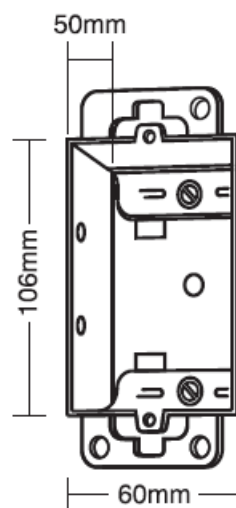
- **Option 1:**
Search for "Gosund" in the Apple APP Store or Google Play.
- **Option 2:**
Scan the QR code to enter the download page.

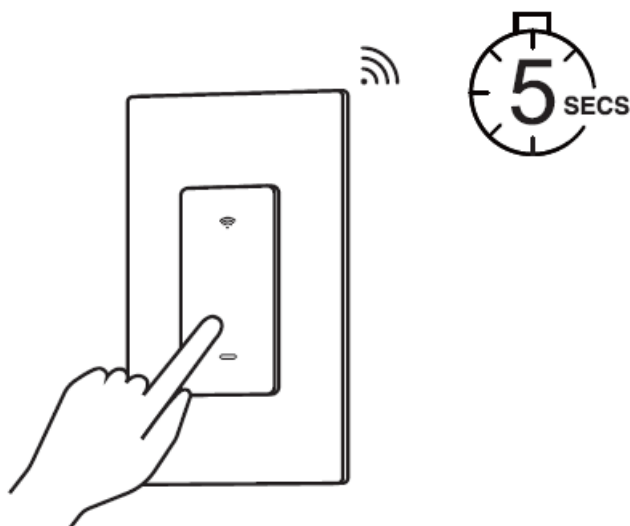
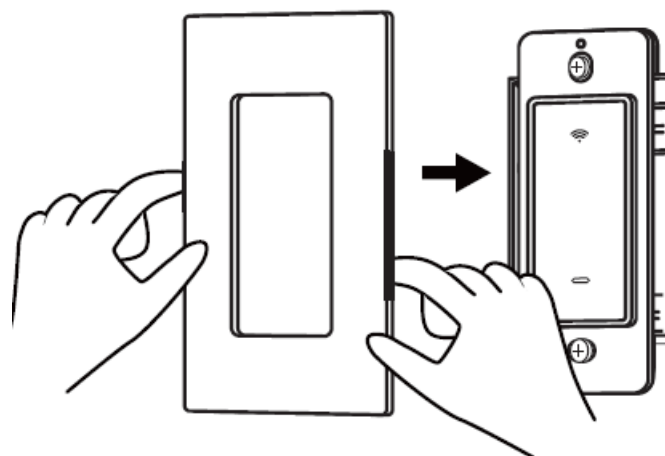
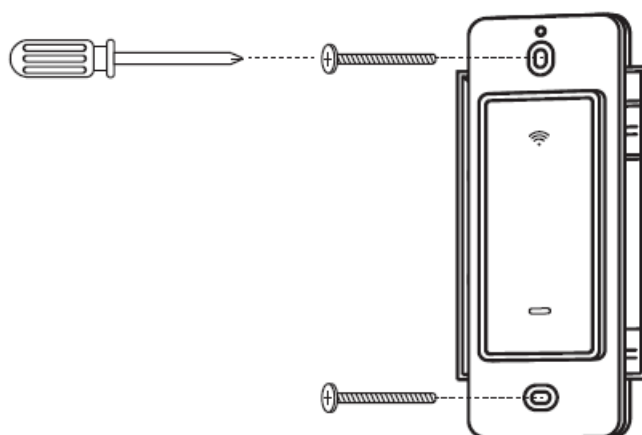
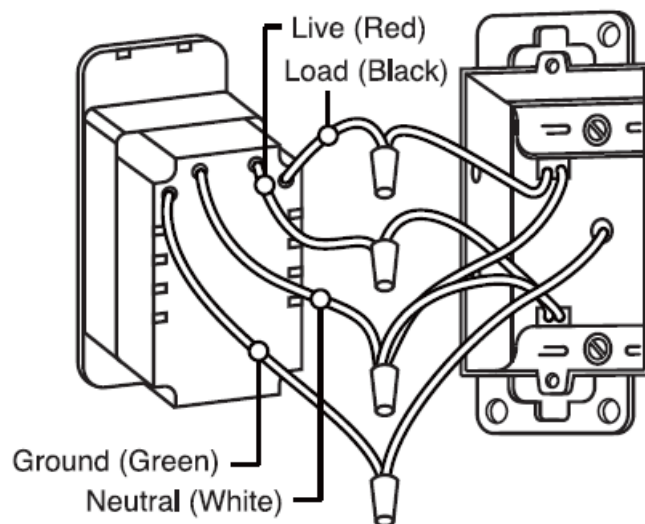


Installation

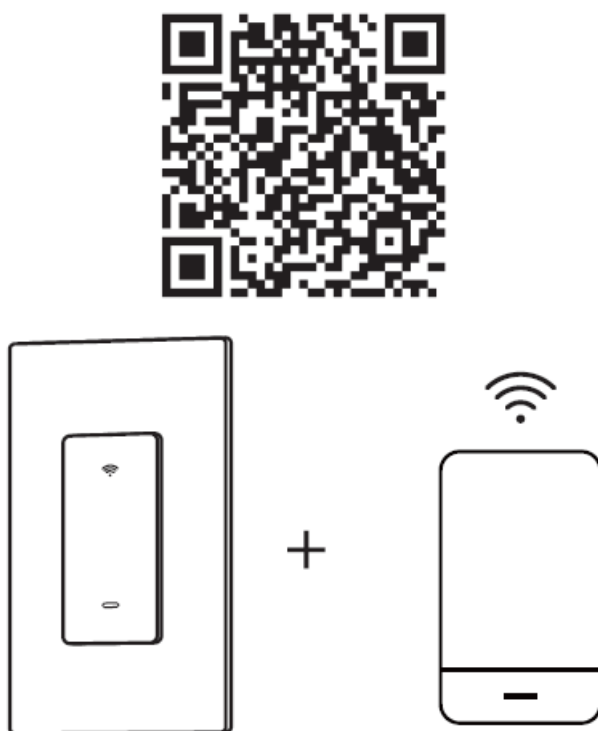


Screw Size
PM3.5x27.5mm
Screw Torque

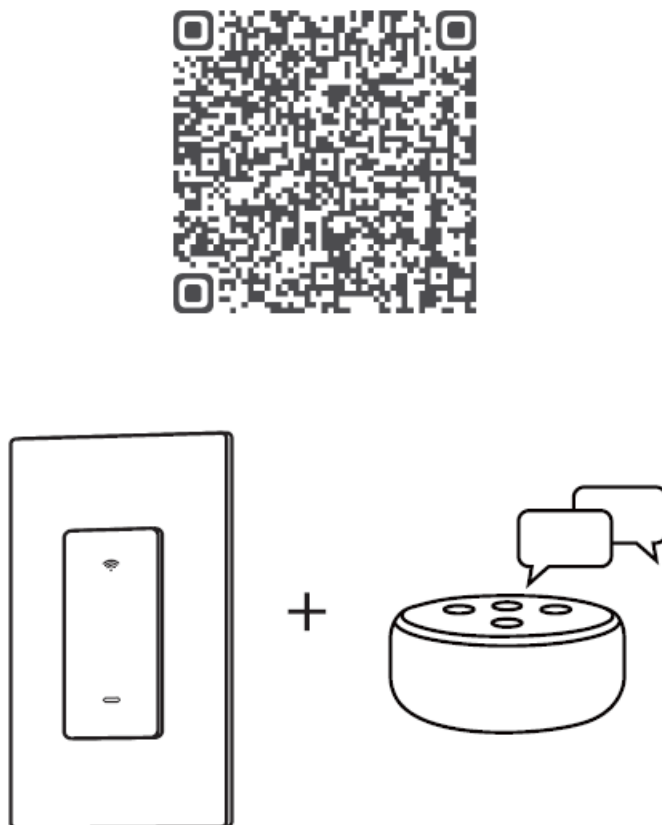




After downloading the APP and logging in, make sure the indicator is blinking, then please use our APP “Add device” scan the QR code and get into Quick Pairing, connect the device and APP. If you meet any issues, contact us via the official website or APP.



How to connect Alexa or Google Assistant



WARNING

- Keep it out of the reach of children and pets.

- Do not use this product in humid environments or outdoors. It's for indoor use only.
- Do not place this product near heating devices, such as microwave ovens, stoves, or radiators.
- Protect the product from extreme temperatures, direct sunlight, strong jolts, high humidity, moisture, flammable gases, vapors, and solvents.
- Do not disassemble, modify, or repair your device, and ask for help from authorized professionals for device malfunction.
- Do not use the device when it is no longer working properly or visibly damaged.
- Do not store the device for extended periods in poor ambient conditions.
- Never use aggressive detergents such as alcohol or other chemical solutions because these could damage the casing or even impair the functioning of the product.

FCC STATEMENT

NOTE:

This equipment has been tested and found to comply with the limits for a Class B digital device, according to part 15 of the FCC Rules. These limits are designed to provide reasonable protection against harmful interference in a residential installation. This equipment generates uses and can radiate radio frequency energy and, if not installed and used per the instructions, may cause harmful interference to radio communications.

However, there is no guarantee that interference will not occur in a particular installation. If this equipment does cause harmful interference to radio or television reception, which can be determined by turning the equipment off and on, the user is encouraged to try to correct the interference by one or more of the following measures:

- Reorient or relocate the receiving antenna.
- Increase the separation between the equipment and the receiver.
- Connect the equipment to an outlet on a circuit different from that to which the receiver is connected.
- Consult the dealer or an experienced radio/TV technician for help

Changes or modifications not expressly approved by the party responsible for compliance could void the user's authority to operate the equipment.

This device complies with Part 15 of the FCC Rules. Operation is subject to the following two conditions:

1. this device may not cause harmful interference, and
2. this device must accept any interference received, including interference that may cause undesired operation.


RF Exposure Warning Statements:

This equipment complies with FCC radiation exposure limits set forth for an uncontrolled environment. This equipment shall be installed and operated with a minimum distance of 20cm between the radiator & body.

Warranty Term

We warrant this unit against defects in material and workmanship for one (1) year from the original date of purchase.

Documents / Resources

	<p>GHome Smart B09JZDSLNC Series Wi-Fi Smart Switch [pdf] User Manual</p> <p>SW6-4, SW5-4, B0CLYCF1TM, B0BS3LG9TX, B09JZB9JZY, B09JZCN4QQ, B0BG82G8SJ, B09JZCVD4X, B0CL9ML296, B0BC15NNJ9, B09JZ6W1BH, B0BC16N4BV, B09JZ8BVJB, B09JZDSLNC, B09JZDSLNC Series Wi-Fi Smart Switch, B09JZDSLNC Series, Wi-Fi Smart Switch, Smart Switch, Switch</p>
---	--

References

- [User Manual](#)