



## ghd Curve Thin Wand User Guide

[Home](#) » [ghd](#) » ghd Curve Thin Wand User Guide 



### Contents

[1 ghd Curve Thin Wand](#)

[2 Documents /  
Resources](#)

[2.1 References](#)

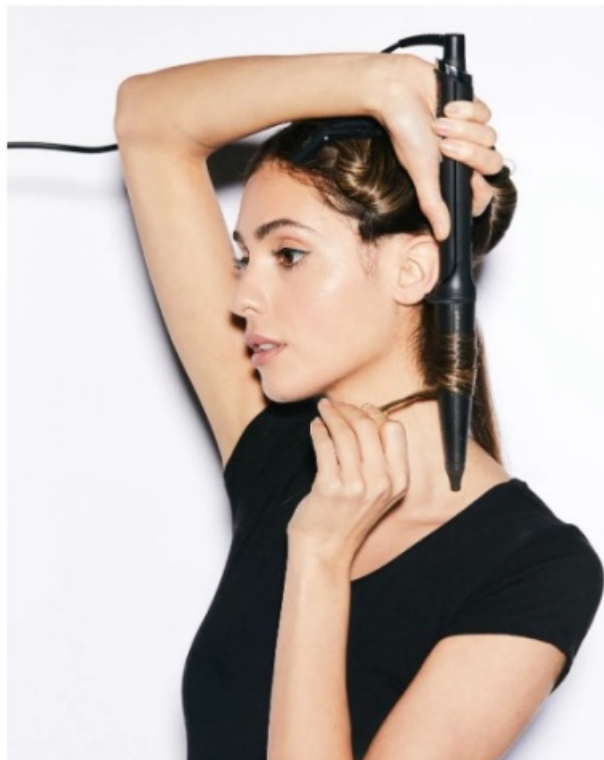
**ghd Curve Thin Wand**



## STEP 1

### PREP HAIR WITH PRODUCT

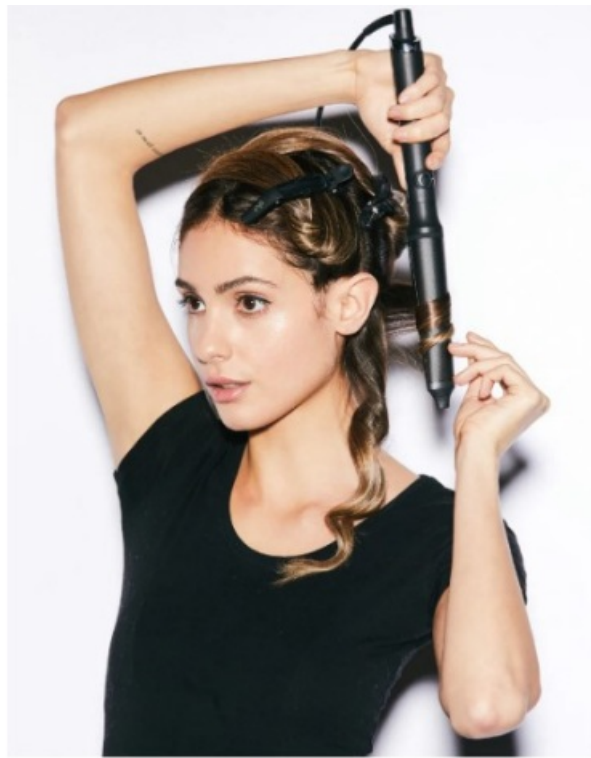
Liberoly apply ghd root lift sporty throughout hair roots



## STEP 2

### SECTION HAIR AND WRAP AROUND WAND

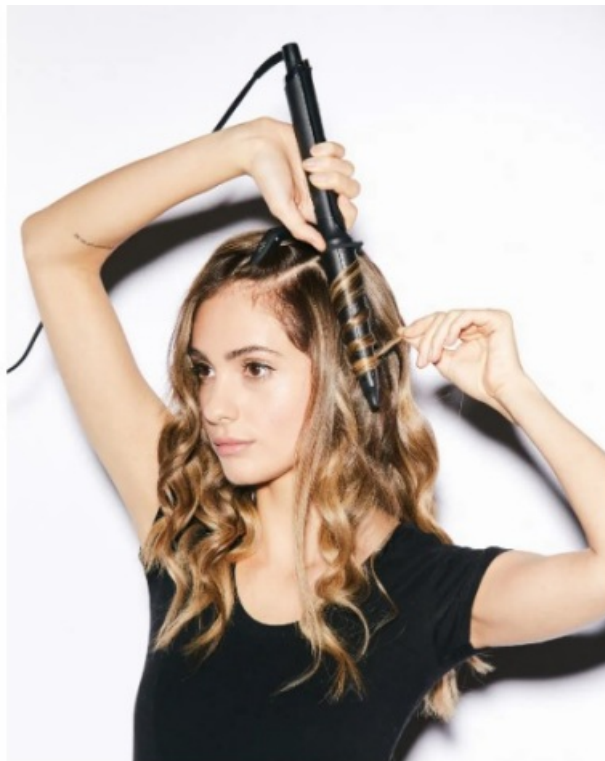
Starting at the side of the head take a vertical section above the ear Place the ghd curve creative curl wand under the hair and flat-wrap hair around the barrel. hold for 8 seconds then release. Pull on the curl slightly to loosen the wave.



### **STEP 3**

#### **CURL NEXT SECTION IN THE OPPOSITE DIRECTION**

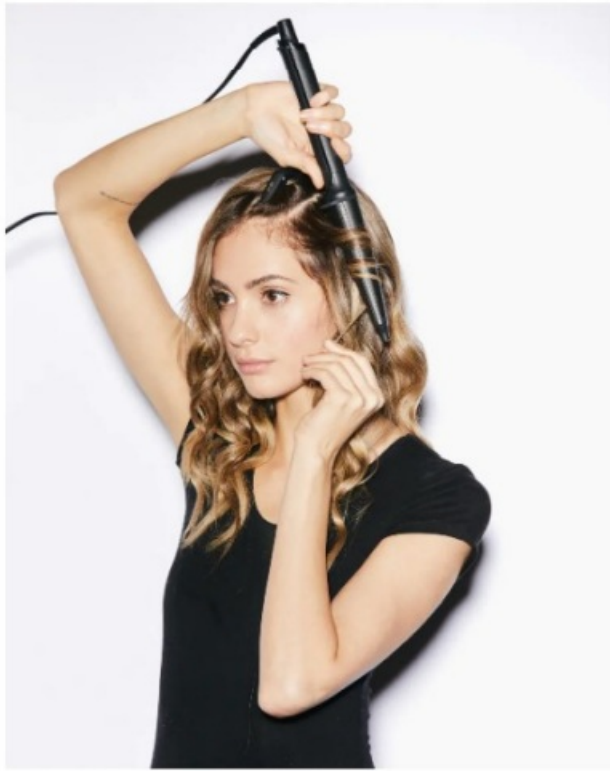
Taking the next section of hair, place the wand above the hair to curl in the opposite direction – this will create texture throughout.



### **STEP 4**

#### **REPEAT TECHNIQUE AROUND HEAD**

Repeat steps two and three throughout the head remembering to note the direction of the curl.



#### STEP 5

##### CURL FRONT SECTIONS AWAY FROM THE FACE

On the sections either side of the face, curl away from the face to sit correctly. Set the curl slightly lower for more of a modern feel.



#### STEP 6

##### DRSS OUT WITH A COMB

Once cool, comb through the hair using the gha detangle comb to break up the waves.



#### STEP 7

##### SPRAY HAIRSPRAY ONTO HANDS AND RUN THROUGH HAIR

Spray ghd 'inal f x hair spray into your hand and run fingers through the hair to add hold.




#### STEP 8

##### MASSAGE INTO HAIR

Massage and rub spray into hair for extra shape and texture.

---

Documents / Resources

	<a href="#">ghd Curve Thin Wand</a> [pdf] User Guide Curve Thin Wand, Thin Wand, Wand
---	--

References

- [User Manual](#)