

GEYER ER120WM Smart Wi-Fi Rail Power Relay Meter



GEYER ER120WM Smart Wi-Fi Rail Power Relay Meter Instruction Manual

[Home](#) » [GEYER](#) » GEYER ER120WM Smart Wi-Fi Rail Power Relay Meter Instruction Manual 

Contents

- [1 GEYER ER120WM Smart Wi-Fi Rail Power Relay Meter](#)
- [2 FAQ](#)
- [3 Download and Register Account](#)
- [4 Add New Device](#)
- [5 Function](#)
- [6 Modify Device Icon](#)
- [7 Create Group](#)
- [8 Specification](#)
- [9 Connection Diagrams](#)
- [10 Dimensions](#)
- [11 Documents / Resources](#)
 - [11.1 References](#)
- [12 Related Posts](#)

GEYER

GEYER ER120WM Smart Wi-Fi Rail Power Relay Meter



1. Download and Install the App on the Mobile

Connect your phone to local wifi, and use your smartphone to scan one of the QR codes below to download and install the App.

2. Register Account

Open the App, click on 'Me' and then select 'Register' to create a new account.

3. Set time program

After logging in, select a device, and set the time program according to your needs.

4. Manual operation

Manual control is available through the App by selecting the power button.

5. Countdown time

Set a countdown for the device to turn off automatically after the specified duration.

6. Astronomical function sunrise time

This function allows the device to turn on or off according to the local sunrise and sunset times.

7. Random Function

The random function enables the device to turn on and off at random times within a set period.

8. Master Function

Master control allows for control of multiple devices simultaneously.

9. Modify Device Icon

Users can personalize the device icon within the App.

10. Modify Device Name

Users can change the name of the device as displayed in the App.

11. Specification

Related Voltage	100-240V AC/50-60Hz
Rated Current	220V AC (2x5A/COS Φ =1)
Contact Configuration	1NO+1NC/SPDT(NO+NC)
Wifi Frequency	2.4Ghz
Mounting	Din Rail 35mm
Ambient Temperature range	-10°C – 60°C
Anti-condensation	Can set 30NO/30FF programs per day or per week
Countdown time	From 1 min to 23 hours 59 mins

12. Connection Diagram

A diagram illustrating the proper wiring setup for the device.

13. Dimensions

Dimensions of the device are provided for installation reference.

14. Troubleshooting

Guidelines for troubleshooting common issues that may arise during the use of the device.

Contact Information

- Geyer Hellas S.A. Drosia Chalkis, Evia, GR 34000, Greece
- Tel: +30 22210 98711
- email: csc@geyer.gr
- Website: www.geyer.gr

FAQ

- **How do I reset my device?**

- Press and hold the button on the device for about 5 seconds until the green LED blinks fast to reset.

- **Can I control the device if I am not at home?**

- Yes, the device can be controlled via the mobile App as long as it is connected to Wifi.

- **Is the device compatible with voice command services?**

- The device's compatibility with voice command services like Google Assistant or Amazon Alexa is not specified and would need to be checked in the product's specifications or with customer support.

Operating Instructions

Download and Register Account

Download and Install App by Mobile

Connect your phone to local wifi first Use your phone to scan any one of the QR code below to Download and install the App



Register Account

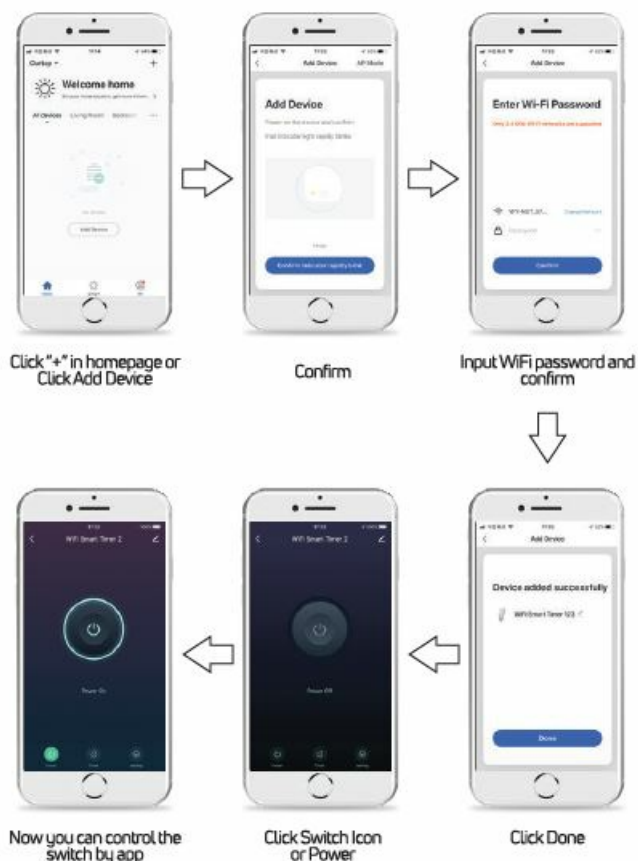


Add New Device

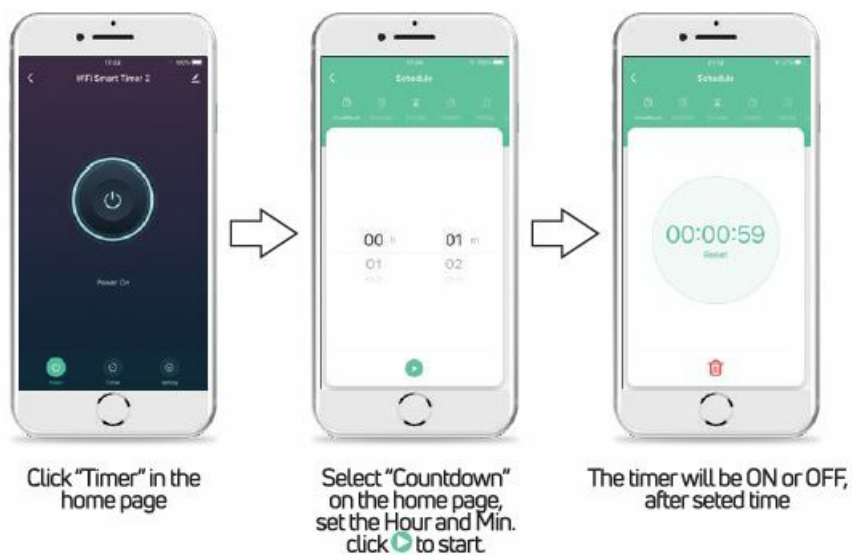
Connect the products with the power100-250VAC, the details connection diagrams please find it in this Instruction Press and hold the button for about 5 seconds until the Green LED light blinks fast.



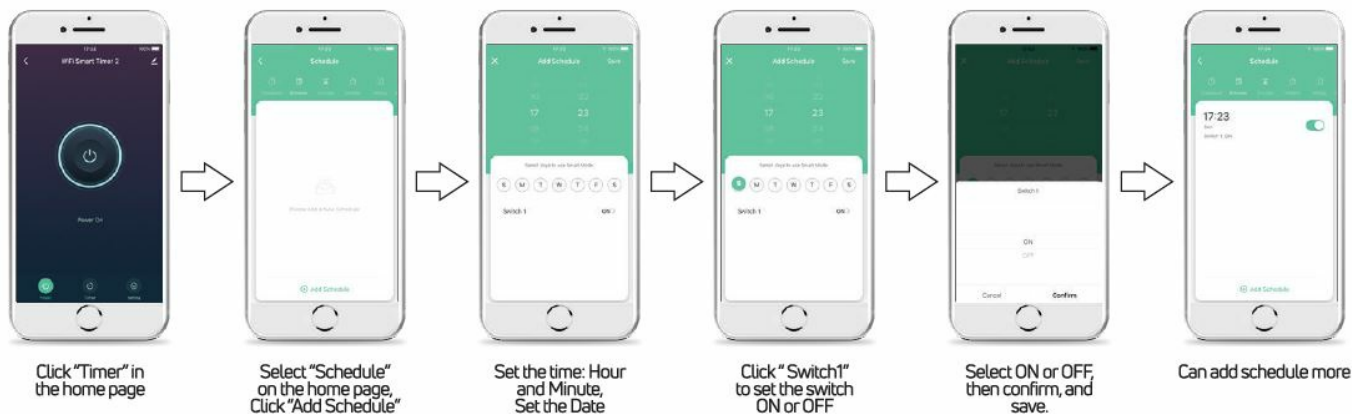
- After holding the switch for 5 seconds, if the LED light is red, press the switch again and you will see the green light blink



Count down time

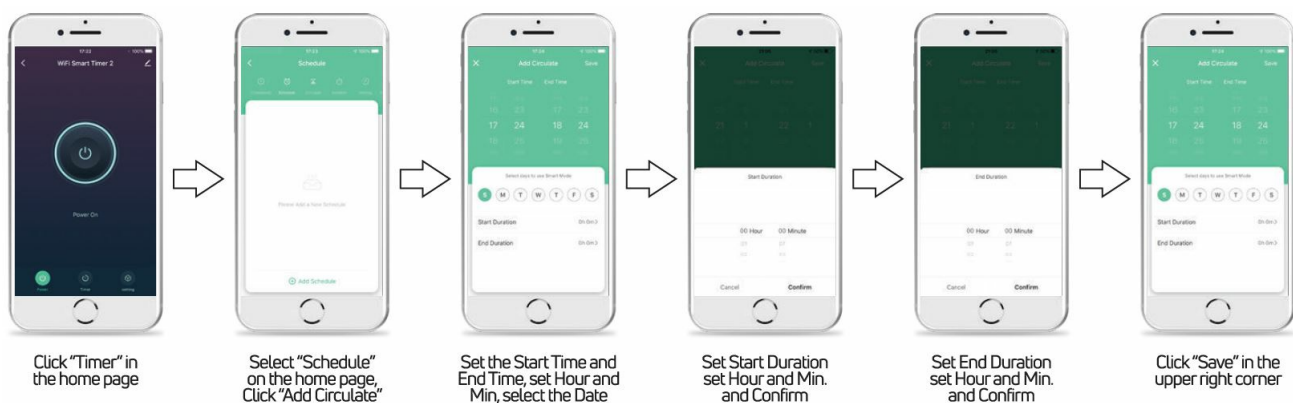


Set time programs

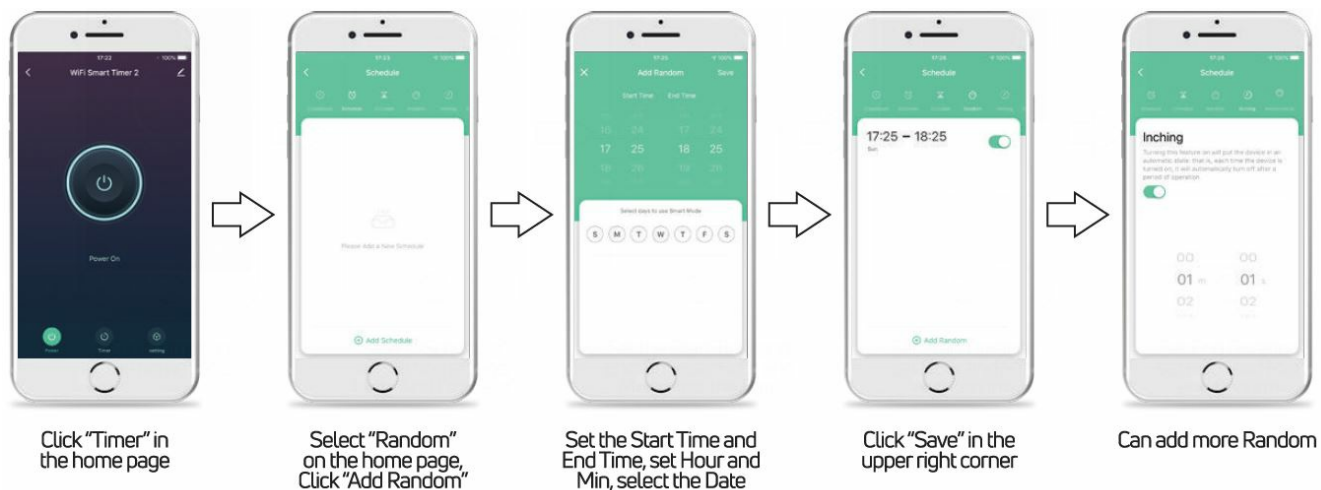


Function

• Circulate Function



• Random Function



• Meter Function

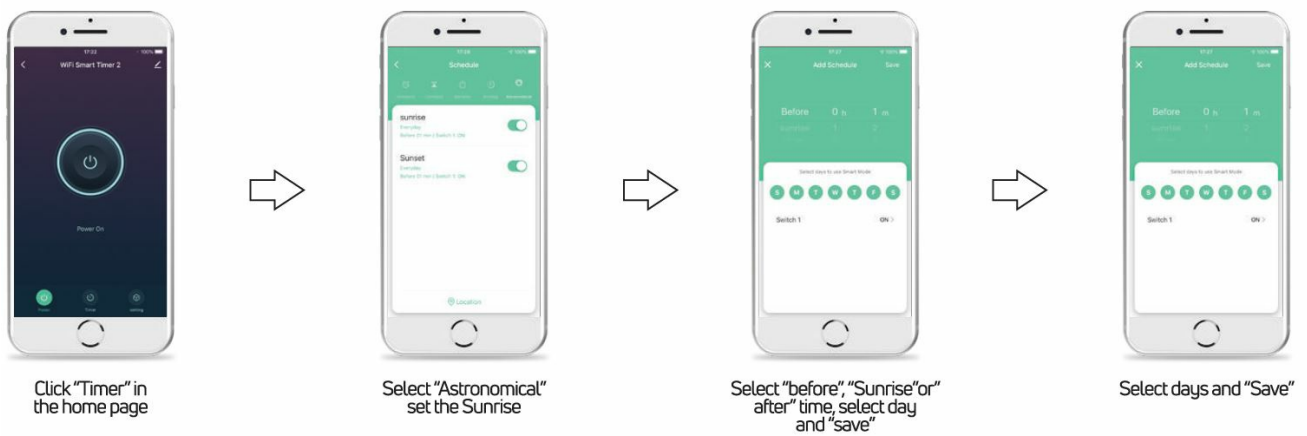


Click "Electric" in the home page

The following are displayed in the App:

- Daily Consumption (KWh)
- Current(mA)
- Power(W)
- Voltage (V)
- Total Consumption (KWh)
- Monthly Consumption (KWh)

• Astronomical Function set Sunrise time



• Astronomical Function set Sunset time



Click "Timer" in the home page



Select "Astronomical" set the Sunset



Select "before", "Sunset" or "after" time, select day and "save"

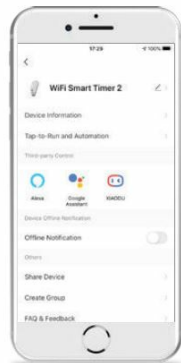



Select days and "Save"

Modify Device Icon



Click this mark  in the upper right corner



Click this mark  in the upper right corner



Click "Icon"

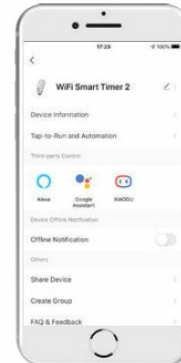



Take Photo or Select from Album if no need change Click "Cancel"

Modify Device Name



Click this mark  in the upper right corner



Click this mark  in the upper right corner



Click "Name"

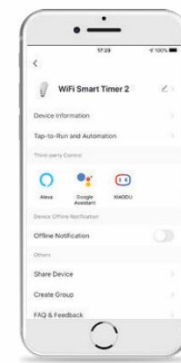


Change the name, and confirm

Share Device



Click this mark  in the upper right corner



Click "Share Device"




Click "Add Sharing"

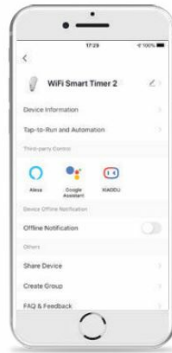


Input the cell phone number, and Click "Done"

Create Group



Click this mark  in the upper right corner



Click "Create Group"



Select the device, and confirm

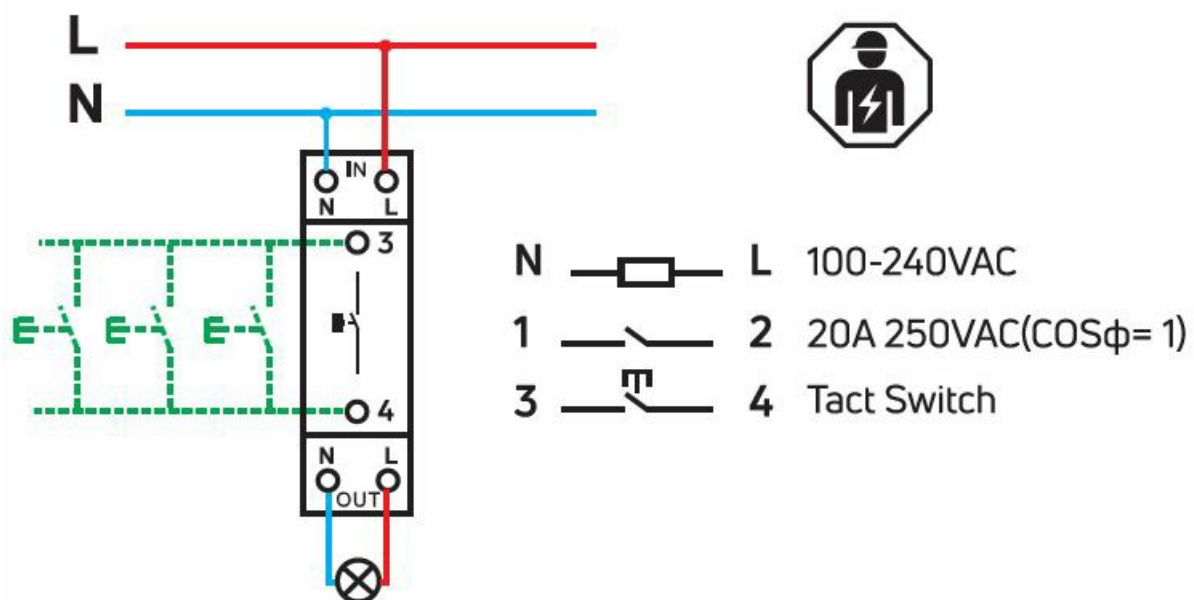


Enter Group Name and Save

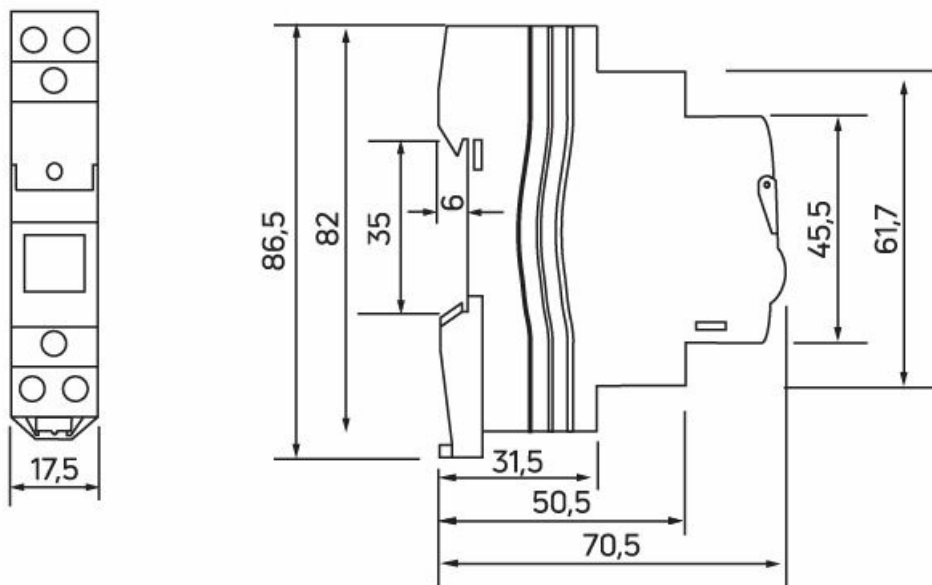
Specification

- Rated Voltage: 100-240 VAC 50-60Hz
- Rated Current: 20A 250VAC(COS ϕ =1)
- Contact configuration: 1NO(SPST-NO)
- WiFi Frequency: 2.4GHz
- Mounting: DIN Rail 35 mm(EN 60715)
- Ambient temperature range:
 - – 10°C. .. +60°C
- Can set 30 ON/OFF programs per day or per week.
- Countdown time, from 1 Min to 23 hours 59 Mins.
- If the product is disconnected from the network, the timer retains all programs set up by the Mobile App and works according to the set programs.
- With the memory function, when the product contact is in the close state, after the power failure, and then call the product contacts still keep the close state.
- Also can be controlled by tact switch from terminal 3 and 4.
- Can be shared with 20 users by Mobile App. If load exceeds 22A, then the relay will automatically disconnect the load circuit
- With Bluetooth function, when the Wifi signal is disconnected for 5 minutes, you can use the App to control the load through Bluetooth.

Connection Diagrams



Dimensions

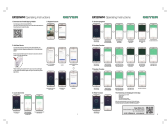


Geyer Hellas S.A. Drosia Chalkis, Evia, GR 34100, Greece

- Tel: +30 22210 98711
- email: cs@geyer.gr
- www.geyer.gr



Documents / Resources



[GEYER ER120WM Smart Wi-Fi Rail Power Relay Meter](#) [pdf] Instruction Manual
ER120WM Smart Wi-Fi Rail Power Relay Meter, ER120WM, Smart Wi-Fi Rail Power Relay Me
ter, Rail Power Relay Meter, Power Relay Meter, Relay Meter, Meter

References

- [User Manual](#)