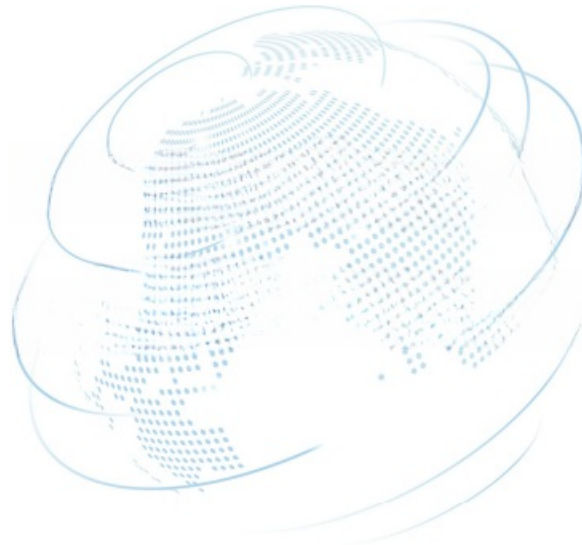


GEXUN WX6 WiFi Adapter Installation Guide



Contents

1 Quick Installation Guide

1.1 Wifi Adapter

1.1.1 1. Wifi Adapter Installation

1.1.2 2. Software Installation

1.1.3 Installation Steps:

1.1.4 FCC Warning

2 Documents / Resources

2.1 References

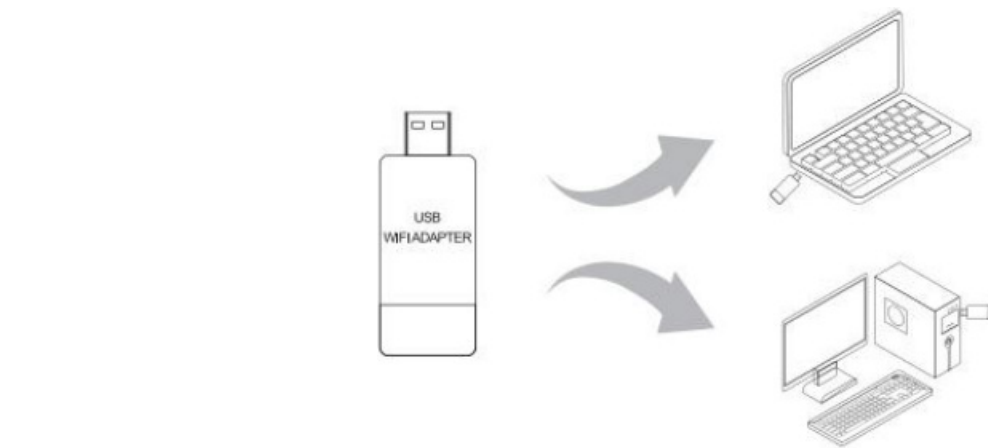
3 Related Posts

Quick Installation Guide

Wifi Adapter

1. Wifi Adapter Installation

No need to power off the computer, just plug the wifi adapter into the corresponding port.



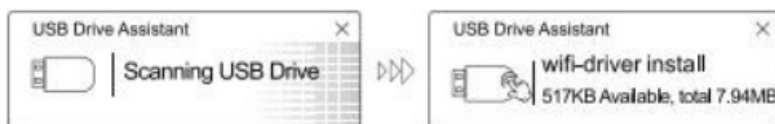
1. Keep away from heat source, keep ventilated, this equipment's operating temperature is 0~40 degrees.
2. Please note waterproofing during storage, transportation, and operation.
3. Do not disassemble on your own. In case of a fault, a professional repair person is needed.

2. Software Installation

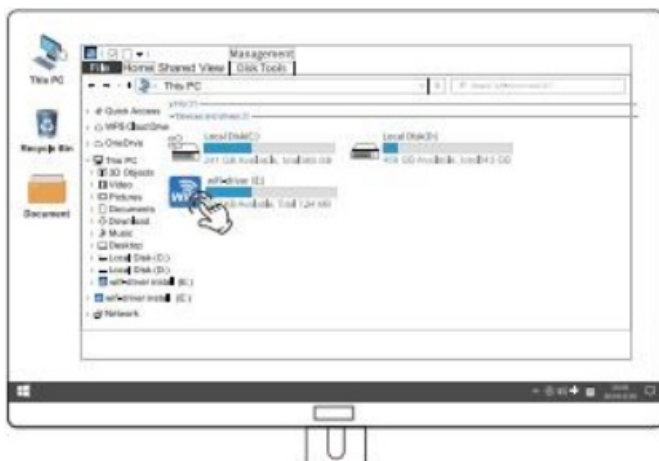
After the wifi adapter is inserted into the computer, it can be opened in the following two ways.

(The software installation process for Windows 7/8/10/11 is similar. The following uses Windows 10 as an example.)

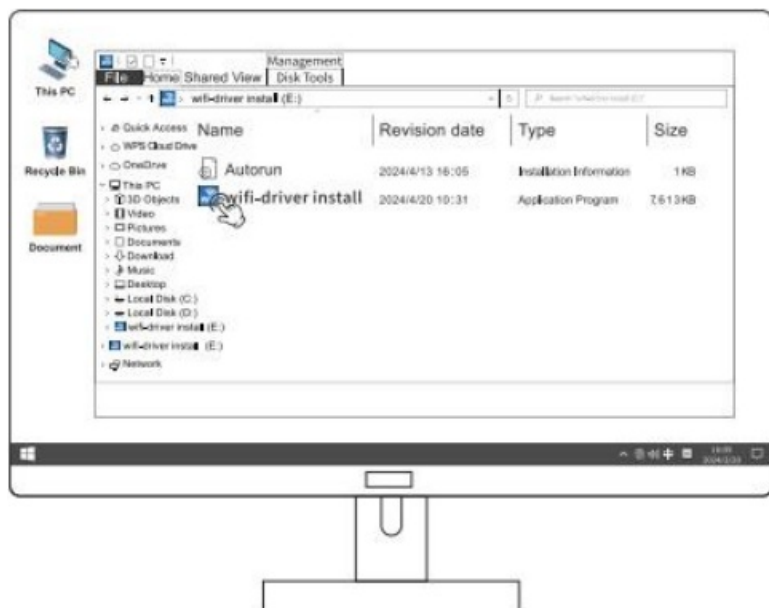
1. After inserting the wifi adapter, if there is a USB drive assistant installed, click on the displayed USB drive assistant to open the dialog box for installation, as shown in the following image:



2. Double-click on the desktop 'This PC' or 'My Computer', double-click the drive to wait for 10-30 seconds, and then you can start the installation.



3. After inserting the wifi adapter, some computers will automatically eject the driver.

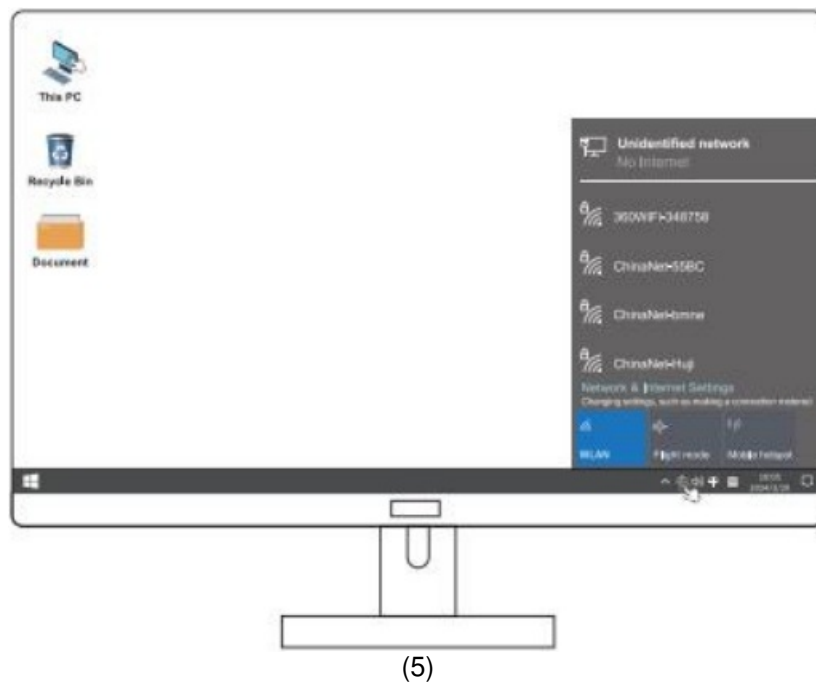


Tips:

If your computer cannot recognize the driver, please uninstall other installed driver of wifi adapter from Control Panel, and then reinsert the wifi adapter to begin installation.

Installation Steps:





Please feel free to contact our online customer service for any other questions.

FCC Warning

This device complies with part 15 of the FCC Rules. Operation is subject to the following two conditions: (1) This device may not cause harmful interference, and (2) this device must accept any interference received, including interference that may cause undesired operation.


Any Changes or modifications not expressly approved by the party responsible for compliance could void the user's authority to operate the equipment.

Note: This equipment has been tested and found to comply with the limits for a Class B digital device, pursuant to part 15 of the FCC Rules. These limits are designed to provide reasonable protection against harmful interference in a residential installation. This equipment generates uses and can radiate radio frequency energy and, if not installed and used in accordance with the instructions, may cause harmful interference to radio communications. However, there is no guarantee that interference will not occur in a particular installation. If this equipment does cause harmful interference to radio or television reception, which can be determined by turning the equipment off and on, the user is encouraged to try to correct the interference by one or more of the following measures:

- Reorient or relocate the receiving antenna.
- Increase the separation between the equipment and receiver.
- Connect the equipment into an outlet on a circuit different from that to which the receiver is connected.
- Consult the dealer or an experienced radio/TV technician for help.

The device has been evaluated to meet general RF exposure requirement. The device can be used in portable exposure condition without restriction.

Documents / Resources

	<p>GEXUN WX6 WiFi Adapter [pdf] Installation Guide WX6, WX6 WiFi Adapter, WiFi Adapter, Adapter</p>
---	---

References

- [User Manual](#)

[Manuals+](#), [Privacy Policy](#)

This website is an independent publication and is neither affiliated with nor endorsed by any of the trademark owners. The "Bluetooth®" word mark and logos are registered trademarks owned by Bluetooth SIG, Inc. The "Wi-Fi®" word mark and logos are registered trademarks owned by the Wi-Fi Alliance. Any use of these marks on this website does not imply any affiliation with or endorsement.