



# GeoVision GV-R Series SNVR Standalone Network Video Recorder User Guide

[Home](#) » [GeoVision](#) » GeoVision GV-R Series SNVR Standalone Network Video Recorder User Guide 

## Contents

- [1 GeoVision GV-R Series SNVR Standalone Network Video Recorder](#)
- [2 Introduction](#)
- [3 Connection](#)
- [4 Getting Started](#)
- [5 Upgrading Firmware](#)
- [6 Documents / Resources](#)
  - [6.1 References](#)
- [7 Related Posts](#)



## GeoVision GV-R Series SNVR Standalone Network Video Recorder



© 2024 GeoVision, Inc. All rights reserved.

Under the copyright laws, this manual may not be copied, in whole or in part, without the written consent of GeoVision. Every effort has been made to ensure that the information in this manual is accurate. GeoVision, Inc. makes no expressed or implied warranty of any kind and assumes no responsibility for errors or omissions. No liability is assumed for incidental or consequential damages arising from the use of the information or products

contained herein. Features and specifications are subject to change without notice.

GeoVision, Inc.  
9F, No. 246, Sec. 1, Neihu Rd.,  
Neihu District, Taipei, Taiwan  
**Tel: +886-2-8797-8377**  
**Fax: +886-2-8797-8335**  
<http://www.geovision.com.tw>

Trademarks used in this manual: GeoVision, the GeoVision logo and GV series products are trademarks of GeoVision, Inc. Windows is the registered trademark of Microsoft Corporation.

**Scan the following QR codes for product warranty and technical support policy:**



[Warranty]



[Technical Support Policy]

## Introduction

Welcome to the GV-R Series Quick Start Guide. In the following sections, you will learn about the basic installations and configurations. For more details, see GV-R Series User's Manual.

**Note:** The first time you run the NVR, you will be required to set your password immediately in order to protect your privacy. Please be sure to record your username and password and save them in a secure place.

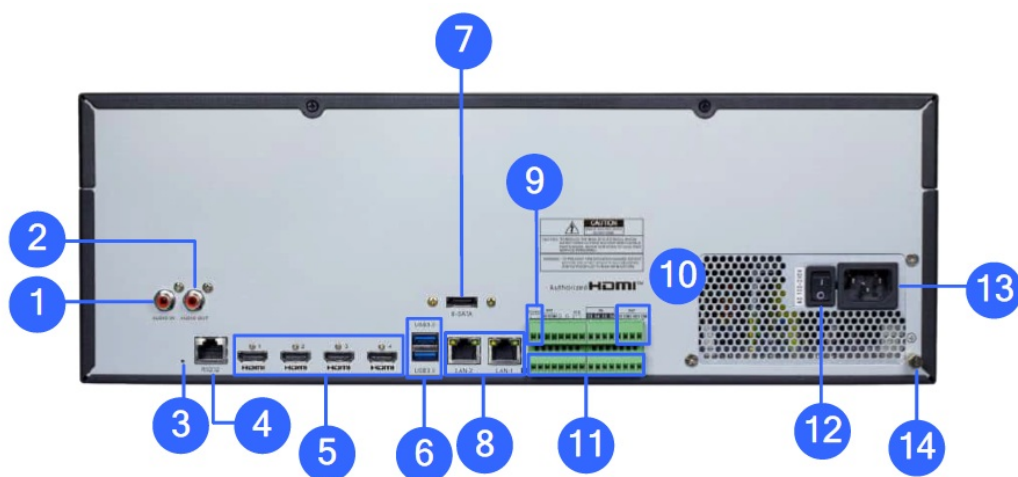
### GV-RNVR256G0-N Front View



No.	Item	Status	Description
1.	Standby button		It is used to power on/off the system when the device has a constant power supply. You can press and hold the button for three seconds to shut down the device, and you can press and hold the key for 10 seconds to forcefully restart the device.

2.	Power LED	Solid on	The device is operating properly.
		Not lit	The device is shut down or not powered on.
3.	HDD LED	Lit green	The hard disk is operating properly and no data is read or written.
		Flash green	The hard disk is operating properly and there is data read or written.
		Not lit	The hard disk cannot be detected or the hard disk is faulty.
4.	LAN1 /2 LED	Solid on	The hard disk is operating properly and no data is read or written.
		Not lit	The hard disk is operating properly and there is data read or written.
5.	USB Port		Connected to a mobile USB device or a mouse.

#### GV-RNVR256G0-N Rear View



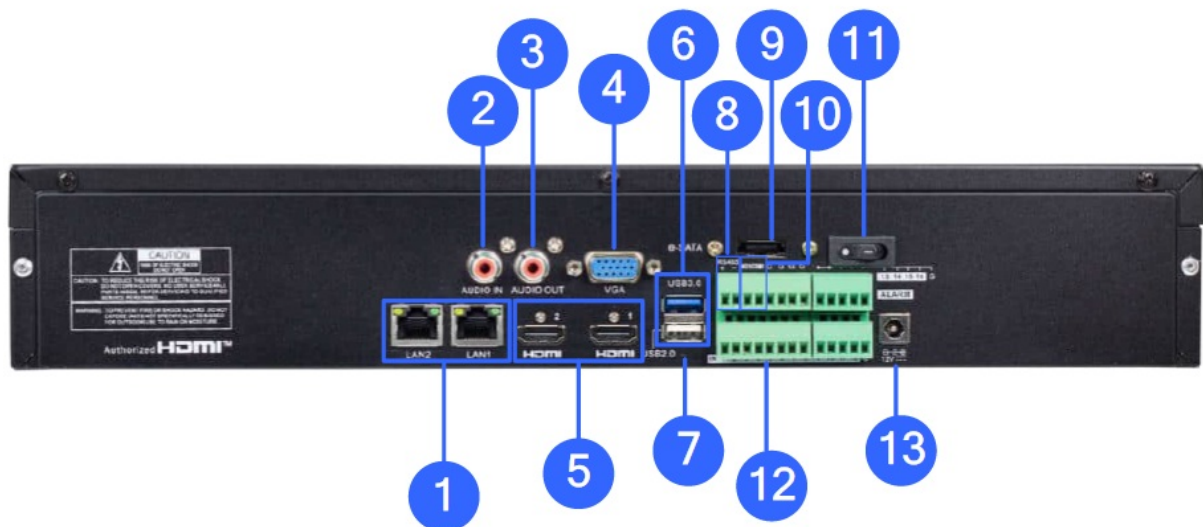
No.	Item	Description
1.	Audio input	Connected to an analog audio input device.
2.	Audio output	Connected to an analog audio output device.
3.	Reset button	Used to restore the factory settings. You can press and hold the button for 10 seconds to make the system automatically restore the factory settings, and the buzzer rings four times at the same time.
4.	RS232 interface	It is currently not functional.
5.	HDMI 1/2/3/4	Output interface of the device, supporting output with 8K/4K/1080p resolution.
6.	USB Port	Connect a USB device, such as USB mouse and USB flash disk.
7.	e-SATA	Connected to an external storage device. A maximum of one hard disk is supported.
8.	LAN1/2	Gigabit network interface for connecting network cables.
9.	RS-485 interface	Connected to a speed dome camera.
10.	Alarm output interface	Connected to alarm output devices.
11.	Alarm input interface	Connected to alarm input devices.
12.	Power switch	Used to power on/off the device.
13.	Power Port	Connect the attached power supply.
14.	Grounding Terminal	Connect to the grounding cable.
<b>Note:</b> The device only supports HDMI #1 output at 8K. If the output resolution of HDMI #1 is set to 8K, the maximum output resolution of HDMI #3 and #4 will be limited to 1080P, and HDMI #2 will be disabled.		

#### GV-RNVR3240-N Front View



No.	Item	Status	Description
1.	Power LED	Solid on	The device is operating properly.
		Not lit	The device is shut down or not powered on.
2.	HDD LED	Lit red	The hard disk is operating properly and no data is read or written.
		Flash red	The hard disk is operating properly and there is data read or written.
		Not lit	The hard disk cannot be detected or the hard disk is faulty.
3.	USB Port		Connected to a mobile USB device or a mouse.

#### GV-RNVR3240-N Rear View



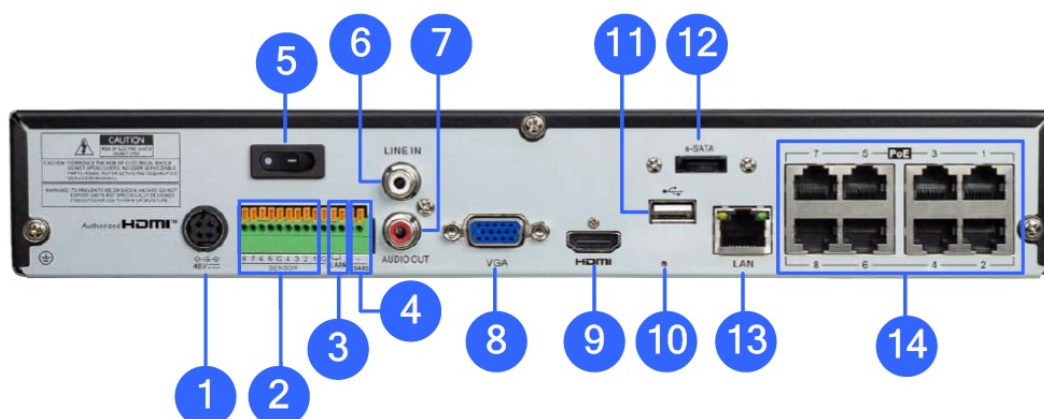
No.	Item	Description
1.	LAN1/2	Gigabit network interface for connecting network cables.
2.	Audio input	Connected to an analog audio input device.
3.	Audio output	Connected to an analog audio output device.
4.	VGA	Connected to a VGA monitor.
5.	HDMI 1/2	Output interface of the device, supporting output with up to 4K resolution.
6.	USB Port	Connect a USB device, such as USB mouse and USB flash disk.
7.	Reset button	Used to restore the factory settings. You can press and hold the button for 10 seconds to make the system automatically restore the factory settings, and the buzzer rings four times at the same time.
8.	RS-485 interface	Connected to a speed dome camera.
9.	e-SATA	Connected to an external storage device. A maximum of one hard disk is supported.
10.	Alarm output interface	Connected to alarm output devices.
11.	Power switch	Used to power on/off the device.
12.	Alarm input interface	Connected to alarm input devices.
13.	Power Port	Connect the attached power supply.
<b>Note:</b> The device only supports HDMI #1 output at 4K. The resolution of HDMI #1 and VGA outputs will be synchronized.		

#### GV-RNVRL810-P Front View



No.	Item	Status	Description
1.	Power LED	Solid on	The device is operating properly.
		Not lit	The device is shut down or not powered on.
2.	HDD LED	Lit red	The hard disk is operating properly and no data is read or written.
		Flash red	The hard disk is operating properly and there is data read or written.
		Not lit	The hard disk cannot be detected or the hard disk is faulty.
3.	USB Port		Connected to a mobile USB device or a mouse.

#### GV-RNVRL810-P Rear View

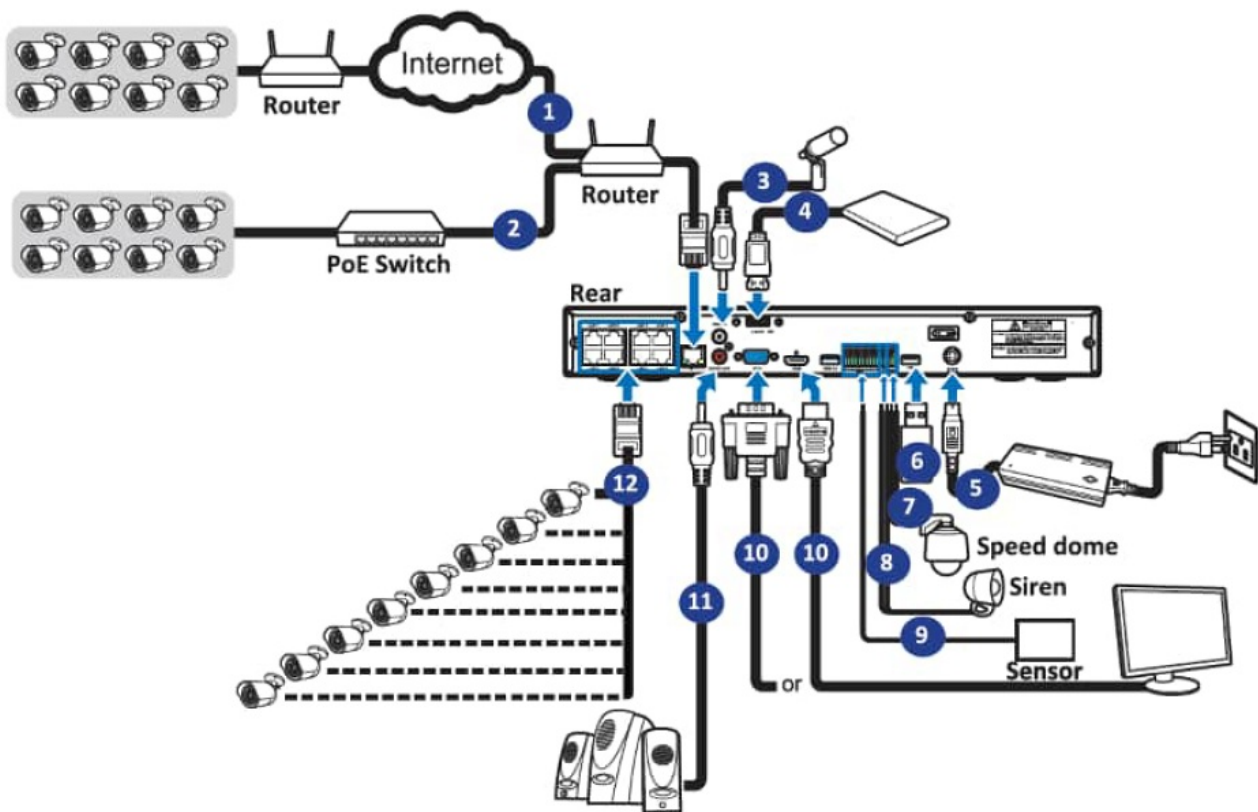
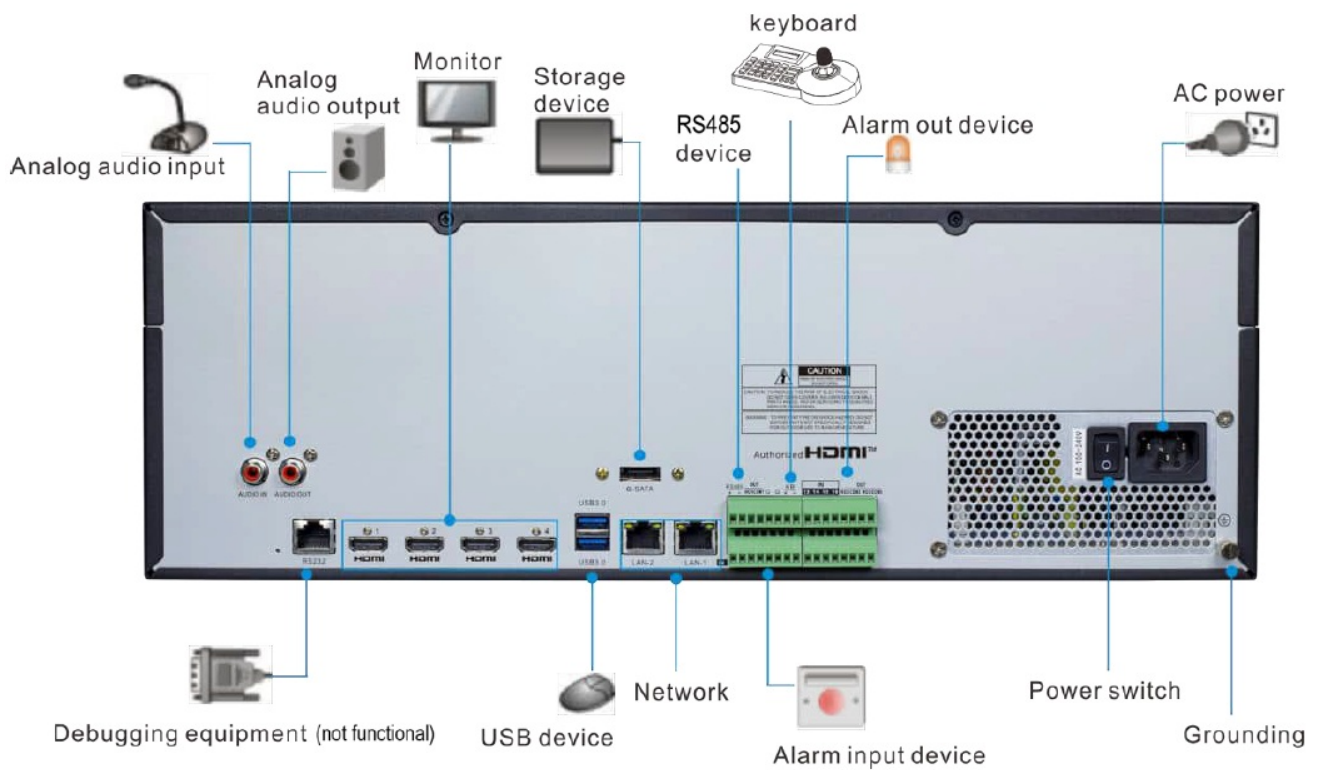


No.	Item	Description
1.	Power Port	Connect the attached power supply.
2.	Alarm input interface	Connected to alarm input devices.
3.	Alarm output interface	Connected to alarm output devices.
4.	RS-485 interface	Connected to a speed dome camera.
5.	Power switch	Used to power on/off the device.
6.	Audio input	Connected to an analog audio input device.
7.	Audio output	Connected to an analog audio output device.
8.	VGA	Connected to a VGA monitor.
9.	HDMI	Output interface of the device, supporting output with up to 4K resolution.
10.	Reset button	Used to restore the factory settings. You can press and hold the button for 10 seconds to make the system automatically restore the factory settings, and the buzzer rings four times at the same time.
11.	USB Port	Connect a USB device, such as USB mouse and USB flash disk.
12.	e-SATA	Connected to an external storage device. A maximum of one hard disk is supported.
13.	LAN	Gigabit network interface for connecting network cables.
14.	Megabit PoE ports	Connected to cameras, delivering power and network connection to the cameras.

## Connection

### Connection Diagram





**Note:** Above connection diagram is for illustration purpose only. The interfaces in your actual product may vary with models.

### HDD Installation

The number of 3.5" SATA hard drives that the NVR can support varies depending on the model. The following procedures are for reference only. The practical operation may be different depending on the NVR you purchased.

**Caution:** Do not install or remove the hard disk drive while the power is turned on.

1. Remove the placeholder from the ejector lever.



## 2. Install the ejector lever of the hard drive

Use screws to fix the hard drive on the ejector lever. You can distinguish between the left side and the right side in accordance with the indicators on the ejector lever.



## 3. Open the front panel

Press the buckles on the two sides on the upper part of the front panel and pull the front panel outwards



## 4. Insert the hard drive

Align the hard drive slot and insert the hard drive gently and smoothly.

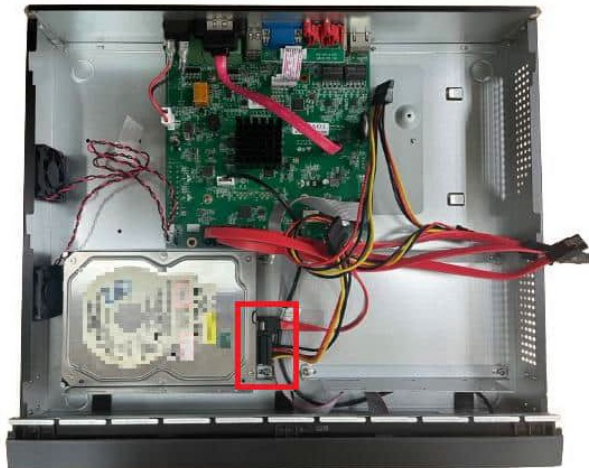


## 5. Buckle up the hard drive and close the front panel

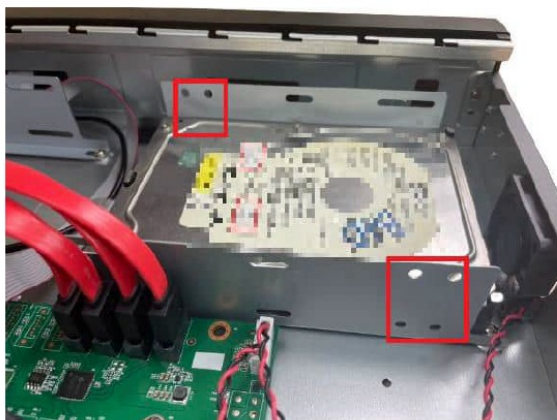
Push in the hard drive until you hear a click. After the hard drive is installed, close the front panel.

### GV-RNVR3240-N

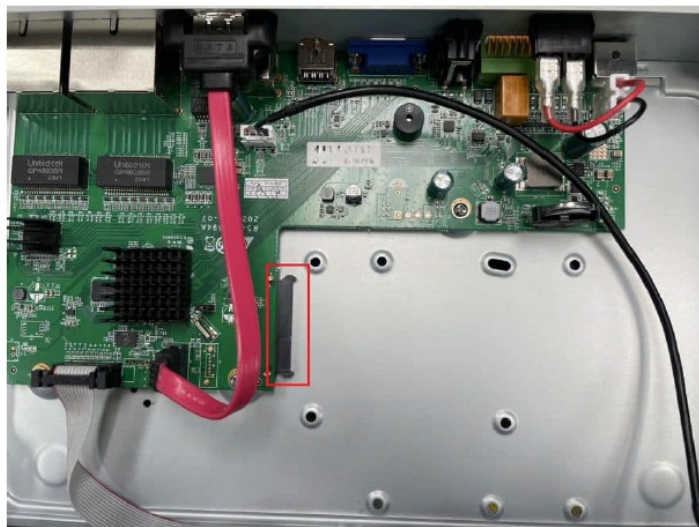
1. Connect the data and power cables to the hard disk drives and place them on the NVR case. Up to 2 hard disk drives can fit in one tray on each side.



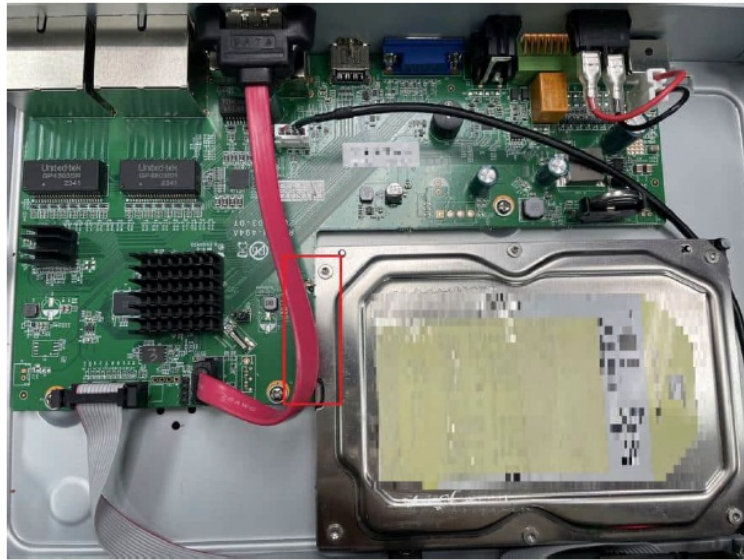
2. Secure the hard disk drives to the NVR with screws.



3. Align the hard drive with the power and data connectors indicated below.



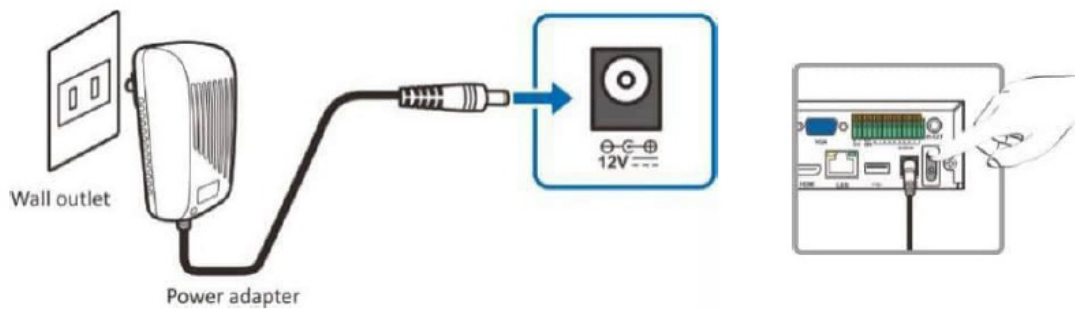
4. Mount the hard drive to finish the installation.



## Power Supply Connection

**Caution:** Only use the supplied power adapter that comes with the NVR.

Connect one end of the power adapter to the power connector on the back of the NVR. Plug the other end of the power adapter into the wall outlet. And press the Power Switch to turn on the power.

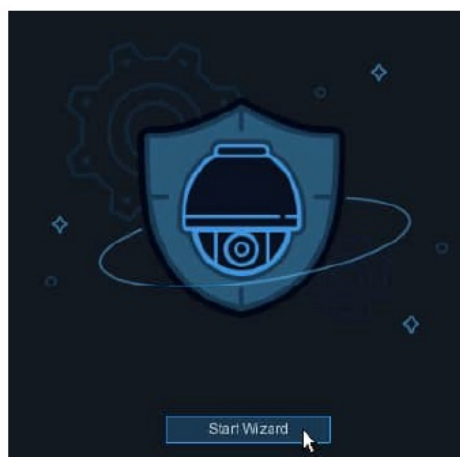


**Note:** Above connection diagram is for illustration purpose only. The interfaces in your actual product may vary with models.

## Getting Started

### Start Wizard

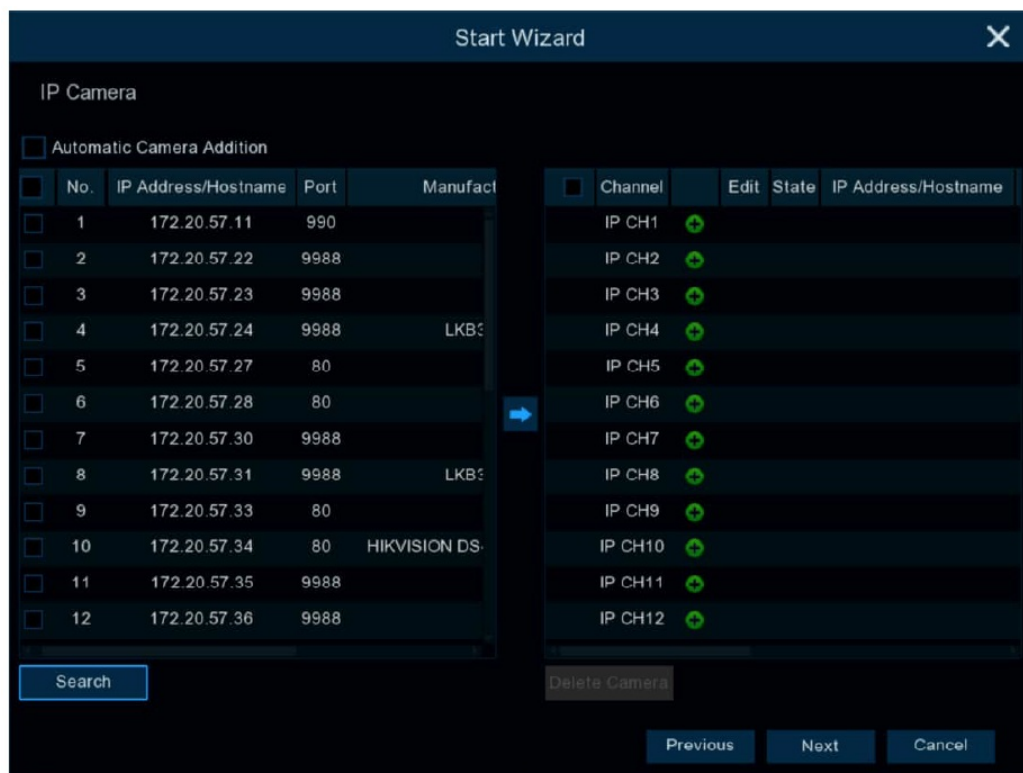
Click Start Wizard to proceed to the next step.



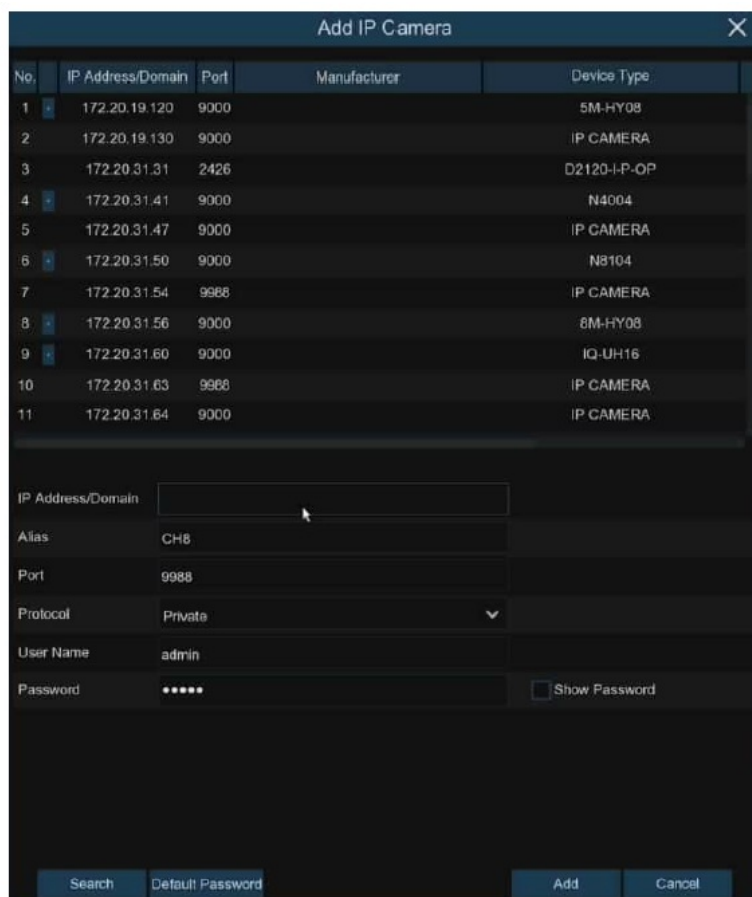
## Connecting IP Cameras



After finishing setting Network Configuration and Date and Time, this page appears.



Click Search to search for IP cameras in the same network. Select the IP camera(s) you want to add, and then click icon to add to the NVR. Or, click button to manually add an individual IP camera to a single channel. This dialog box appears.











- IP Address/Domain: Enter the IP address or domain name of the IP camera.

- Alias: Name the IP camera.
- Port: It is set to 80 by default. Modify it if necessary.
- Protocol: Select the protocol of the IP camera from the dropdown menu.
  - Select Onvif for GV-IP cameras
  - Select Private for GV-RBL5800 / RBL5811 / REB5800 / RFER12700
  - Select RTSP, and type the commands as shown below:
  - Main Stream: rtsp://IP address:port/rtsp/streaming?channel=xx&subtype=0
  - Sub Stream: rtsp://IP address:port/rtsp/streaming?channel=xx&subtype=1
- User Name: Enter the username of the IP camera.
- Password: Enter the password of the IP camera.
- Automatic Camera Addition: Enable this function for the device to automatically add cameras to the channels where cameras are not added.
- Click Add to add the IP camera to the NVR.

## Live View Overview

### Main Window



Name	Description
Camera Title	Display channel number.
Status Icon	 This indicates that the NVR is currently recording.  This icon appears when the camera has detected motion.  The icon indicates that the external I/O alarm device is triggered.  This icon indicates that the HDD is in error to work.  This icon indicates the HDD is unformatted.  This icon indicates the HDD is unformatted.  This icon indicates the HDD is full.  This icon indicates the HDD is read-only.
Camera Quick Toolbar	Left-click on the screen to quickly access the camera's toolbar. Refer to <i>4.2.1 Camera Quick Toolbar</i> in the manual for details.

### Task Menu Bar

Located at the bottom of the live view screen. Refer to 4.2.2 Taskbar in the manual for details.




### OSD

- **No Camera:** No camera is assigned.
- Failed to connect to camera, please check the network connection!: The added camera is off-lined or lost connection.
- User name or password error!: Incorrect user name or password of the camera.
- Resource Not Enough: No enough system resource to decode the camera images.
- No enough bandwidth for this camera!: The camera cannot get online because the total bitrate of all connected cameras exceeds the NVR's bandwidth limitation.

For details, see 4.2 Live View Screen Overview in the User's Manual.



### Recording Playback

#### Accessing the Playback Window on GV-RNVR Series


On the main window, click the Playback icon  on the toolbar at the bottom to play back the video. At the lower left corner of the main window, you can also click the Start icon  and Search  to open the playback window to customize the playback channels and event types, and then play back the video. For details, see Chapter 7 Search, Playback & Backup in the User's Manual.

## Exporting and Playing Recordings

### Saving Video Clips from Local GV-RNVR Series

1. At the lower left corner of the main window, click the Start icon  and Search to open the playback window.
2. Insert a USB flash drive, and click the Save icon  from the video playback controls to save the video clips.

### Exporting Video Clips from the Web interface of GV-RNVR Series

1. On the main page, click the Playback tab to open the playback page.
2. After searching for the desired recordings, click the Download icon  from the video playback controls.
3. Select the desired files and click Start Download to download the video clips.

### Playing Video Clips Exported Locally or from the Web Interface of GV-RNVR Series

1. Install one of the following players:
  - GV-R Series Video Player
  - VLC Media Player
  - KM Player
2. Launch the player and locate the recordings, and wait for 3 ~ 30 seconds before it starts to play.

**Note:** Make sure to launch and player first and locate the recordings on the player to prevent latency.

### Remote Access via Web Client

Use the Web Client to remotely access your NVR at any time via a PC. Before you access the Web Client, ensure that your PC's system meets the basic requirements and that the network settings of the NVR are configured properly.

### Basic System Requirements



Item	Minimum	Recommended
CPU	Intel Core™ i5 CPU	Intel Core™ i5 CPU or higher
RAM	4G or more	8G or more
Hard Drive	500G or more	1000G or more
Display RAM	2G or more	4G or more
Display Resolution	1280*1024	1920*1080
OS	Windows 7 or above Mac OS X 10.9 or above	
DirectX	DirectX 11	
Direct3D	Acceleration Function	
Ethernet Adapter	10/100/1000M Ethernet Adapter	
Browser	IE 10 / 11  Safari V12.1 or above Firefox V52 or above  Google Chrome V57 or above  Edge V79 or above	


### Looking Up the Dynamic IP Address

By default, when the NVR is connected LAN with DHCP server, it is automatically assigned with a dynamic IP address. Follow the steps below to look up its IP address.

#### Note:

1. By default, the Administrator's username is admin and cannot be modified.
2. This function is only applicable on GV-IP Device Utility V8.9.8 or later for

### GV-RNVR256G0-N / GV-IP Device Utility V9.0.1 for GV-RNVRL810-P.

1. Make sure the PC used to configure the IP address is under the same LAN as the NVR. Download and install GV-IP Device Utility from our website.
2. On the GV-IP Utility window, click the  button to search for the IP devices connected in the same LAN.  
Click the Name or Mac Address column to sort.
3. Find the NVR with its Mac Address, and click on its IP address.

IP Device Utility							
File Tool Version User Guide							
General settings							
Name	Mac Address	IP Address	Firmware Version	NOTE	Internal Temp...	Timer	
117. GV-BX2802	0013E224A412	<a href="#">192.168.6.134</a>	v1.00 2022-08-09	GV-BX2802	---		
118. GV-BX3400	0013E2FF1780	<a href="#">192.168.5.50</a>	v3.17 2018-10-31	GV-BX3400 (128M) (P_Iris)	52.5°C	2022/8/16 16:38:20	
119. GV-BX3400	0013E2FF167C	<a href="#">192.168.7.182</a>	v3.23 2021-09-24	GV-BX3400 (128M) (P_Iris)	63.3°C	2022/8/16 16:38:18	

4. For first-time users, you are requested to create a password.

5. Type a new password and click OK.

6. Click on its IP address again and select Webpage to open its Web interface.

7. Type the set password on the login page and click Login.

## IMPORTANT:

1. To change the password using GV-IP Device Utility, click on the NVR's IP address, and select Configure > Change Password. Or you can optionally change the password on the camera's Web interface by clicking Config → Security → User ; see "Modify User" in 4.8.1 User Configuration in the user's manual.
2. The security questions should be set after you log in. It is very important for you to reset your password when you forget your password. If you forget the admin password, you can reset the password by clicking Forget Password on the login page. For more details, see 4.8.1 User Configuration in the user's manual.

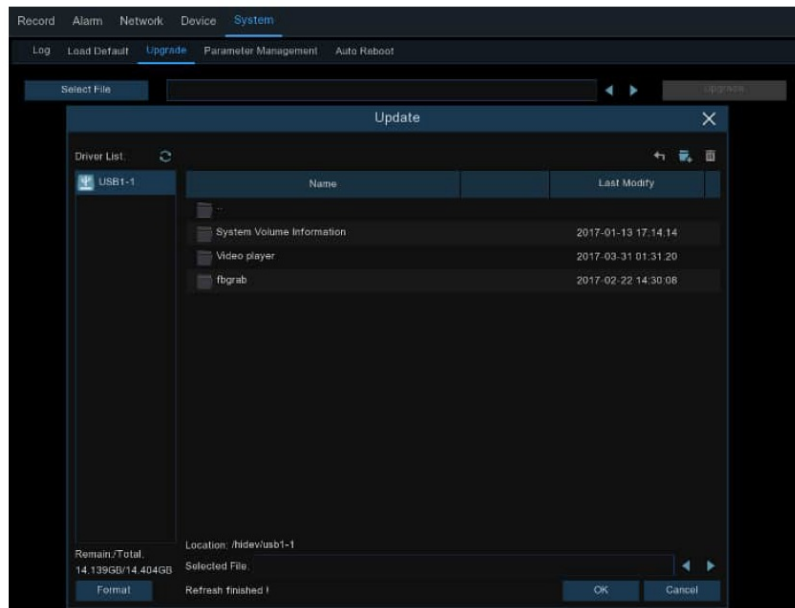
## Upgrading Firmware

You can upgrade the firmware either on GV-RNVR256G0-N / GV-RNVRL810-P or on the device remotely through GV-IP Device Utility. Follow the instructions below.

### Upgrading Firmware on GV-RNVR Series

1. Copy the firmware file to your USB drive, and insert the USB drive to the NVR's USB port.

2. Select System > Maintenance and open the Upgrade tab.
3. Click Select File to choose the firmware file in your USB drive and click OK.




4. Click Upgrade.

**Note:** The system upgrade will last around 5-10 minutes. DO NOT power off the NVR or remove the USB drive from it during firmware upgrade.


## Upgrading Firmware Using GV-IP Device Utility

**Note:** This is only applicable to GV-IP Device Utility V9.0.1 or later.




1. Make sure the PC used to configure the IP address is under the same LAN as the NVR. Download and install GV-IP Device Utility from our website.
2. On the GV-IP Utility window, click the  button to search for the IP devices connected in the same LAN. Click the Name or Mac Address column to sort.
3. Find the NVR with its Mac Address, and click on its IP address.

IP Device Utility							
File Tool Version User Guide							
General settings							
Name	Mac Address	IP Address	Firmware Version	NOTE	Internal Temp...	Timer	
117. GV-BX2802	0013E224A412	<a href="#">192.168.5.134</a>	v1.00 2022-08-09	GV-BX2802	---		
118. GV-BX3400	0013E2FF1780	<a href="#">192.168.5.50</a>	v3.17 2018-10-31	GV-BX3400 (128M) (P_Iris)	52.5°C	2022/8/16 16:38:20	
119. GV-BX3400	0013E2FF167C	<a href="#">192.168.7.182</a>	v3.23 2021-09-24	GV-BX3400 (128M) (P_Iris)	63.3°C	2022/8/16 16:38:18	

4. Click Configure and select the Firmware Upgrade tab.
5. Click Browse to locate the firmware file saved at your local computer.
6. Enter the username and password of the device.
7. Click Upgrade to process the upgrade.

	<p><b><a href="#">GeoVision GV-R Series SNVR Standalone Network Video Recorder</a></b> [pdf] User Guide  GV-RNVR256G0-N, GV-RNVR3240-N, GV-RNVRL810-P, GV-R Series SNVR Standalone Network Video Recorder, GV-R Series SNVR, Standalone Network Video Recorder, Network Video Recorder, Video Recorder, Recorder</p>
----------------------------------------------------------------------------------	--------------------------------------------------------------------------------------------------------------------------------------------------------------------------------------------------------------------------------------------------------------------------------------------------------------------------

## References

-  [KMPlayer Official Site | Best Video Player - We Play All](#)
-  [Geovision IP cameras | Geovision network CCTV cameras from a UK supplier](#)
-  [Official download of VLC media player, the best Open Source player - VideoLAN](#)
- [User Manual](#)

**Manuals+.** [Privacy Policy](#)

This website is an independent publication and is neither affiliated with nor endorsed by any of the trademark owners. The "Bluetooth®" word mark and logos are registered trademarks owned by Bluetooth SIG, Inc. The "Wi-Fi®" word mark and logos are registered trademarks owned by the Wi-Fi Alliance. Any use of these marks on this website does not imply any affiliation with or endorsement.