



George home GDK101B-22 Digital Controlled Kettle User Guide

[Home](#) » [George home](#) » George home GDK101B-22 Digital Controlled Kettle User Guide

George.
home

GDK101B-22 Digital Controlled Kettle
User Guide



GDK101B-22
Digital controlled kettle
User Guide
220-240V~50-60Hz 2550-3000W

Contents [[hide](#)]

- [1 GDK101B-22 Digital Controlled Kettle](#)
- [2 What's in the box](#)
- [3 Features](#)
- [4 Control panel](#)
- [5 Using your kettle](#)
- [6 Cleaning your kettle](#)
- [7 Boil dry safety function](#)
- [8 Cleaning the filter](#)
- [9 Documents / Resources](#)
- [10 Related Posts](#)

GDK101B-22 Digital Controlled Kettle

IMPORTANT: RETAIN FOR FUTURE REFERENCE

About this guide

We've written this manual to help you get the most from your kettle. Please keep hold of it for future reference.

WARNINGS:

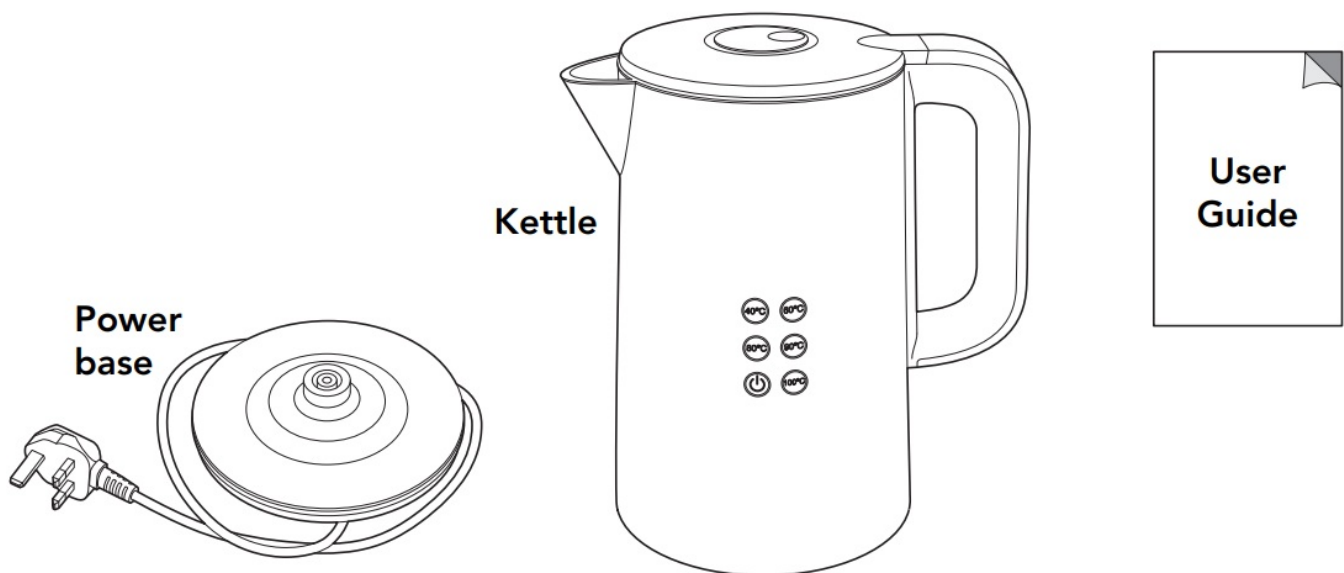
THIS PRODUCT WAS DESIGNED AND MANUFACTURED TO MEET STRICT QUALITY AND SAFETY

STANDARDS. THERE ARE, HOWEVER, SOME OPERATION PRECAUTIONS YOU SHOULD BE AWARE OF. CAUTION. RISK OF SCALDING. DO NOT OPEN LID WHILST KETTLE IS HOT. BE CAREFUL WHEN POURING BOILING WATER FROM YOUR KETTLE AS THIS CAN RESULT IN INJURY.

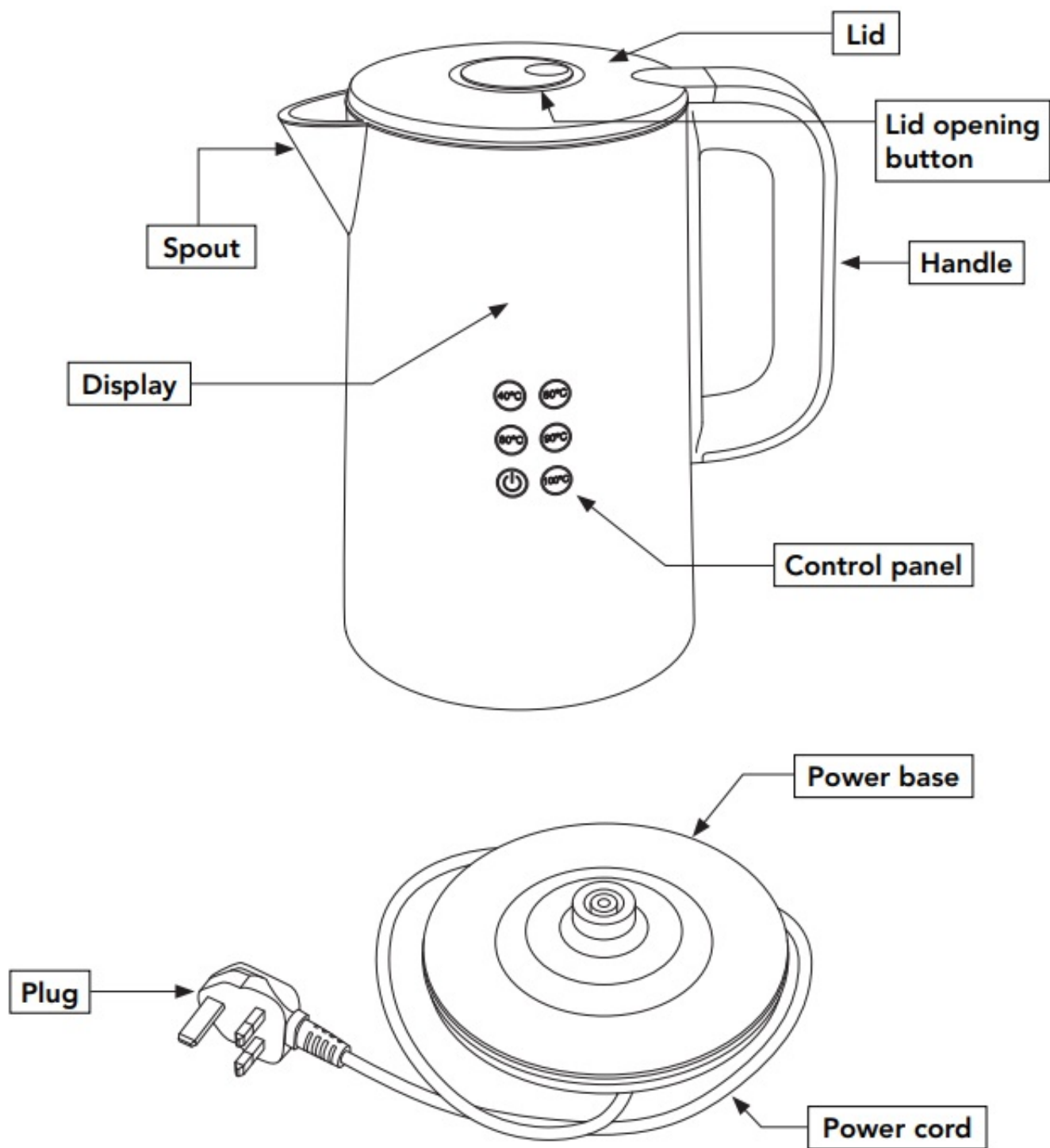
1. Please read these instructions carefully before using the water kettle for the first time.
2. This appliance can be used by children aged from 8 years and above if they have been given supervision or instruction concerning use of the appliance in a safe way and if they understand the hazards involved. Cleaning and user maintenance shall not be made by children unless they are older than 8 and supervised. Keep the appliance and its cord out of reach of children aged less than 8 years.
3. Appliances can be used by persons with reduced physical, sensory or mental capabilities or lack of experience and knowledge if they have been given supervision or instruction concerning use of the appliance in a safe way and understand the hazards involved.
4. Children shall not play with the appliance.
5. If the supply cord is damaged, it must be replaced by the manufacturer, its service agent or similarly qualified persons in order to avoid a hazard.
6. If the kettle is overfilled, boiling water may be ejected.
7. The kettle is only to be used with the stand provided.
8. This appliance is intended to be used in household and similar applications such as:
 - staff kitchen areas in shops, offices and other working environments;
 - farm houses;
 - by clients in hotels, motels and other residential type environments;
 - bed and breakfast type environments.
9. Please don't dismantle. If a fault occurs have the kettle inspected in a qualified repair shop or return to us at ASDA.
10. Avoid spillage on the connector.
11. Heating element surface is subject to residual heat after use.
12. Use the kettle according to this instruction, any misuse may cause electric shock or other hazards.
13. This appliance is not intended to heating liquid other than water.
14. Regarding how to clean the surfaces in contact food, please refer to section 'Cleaning'.
15. Before you connect the kettle to the mains supply, make sure that the voltage indicated on the rating plate, located on the bottom of the water kettle matches the mains voltage in your home. If it does not, contact your dealer and do not use the kettle.
16. The kettle will switch off automatically when the water reaches the selected temperature. If you want to stop the heating process before the kettle automatically switches off, press the ON/OFF button once.
17. After the kettle has switched off automatically (or has been switched off manually) it may need time to cool down. This kettle won't work if the selected temperature is lower than the water.
18. Always fill the kettle with water before switching it on.
19. Avoid boiling without water as this can damage the heating elements. If the water kettle is accidentally switched on without water, the boil dry protector will operate.
20. If the kettle ever boils dry, the power indicator will go out. Allow 15 minutes to cool before refilling with cold water. The safety cutout will automatically reset during this time.
21. Place the kettle on a stable flat surface.
22. Do not use this appliance outdoors.
23. Ensure that the kettle is switched off before removing it from its base.

24. Do not remove the kettle from its base during operation.
25. Never immerse the kettle or cord in water or any other liquid. Do not allow liquid to penetrate the electrical parts of this kettle.
26. Prevent children from pulling on the mains cord or knocking the kettle over.
27. Ensure that the mains lead does not overhang the work top surface.
28. The outside surface of the kettle may get hot during use, please take care when using the kettle.
29. Never fill the kettle with water above the maximum level marker.
30. Never use the kettle with the lid open.
31. Do not open the lid when steam is coming out of the spout.
32. Before cleaning the kettle disconnect from the power supply and wait until it was cooled down.
33. Always press the button on the lid to open, and push the lid closed without touching the button. Please be careful if the kettle has recently been heated as surfaces may be hot.
34. Environmental information: If at anytime in the future you should need to dispose of this product, please note that, in the UK, waste electrical products/batteries should not be disposed of with household waste.

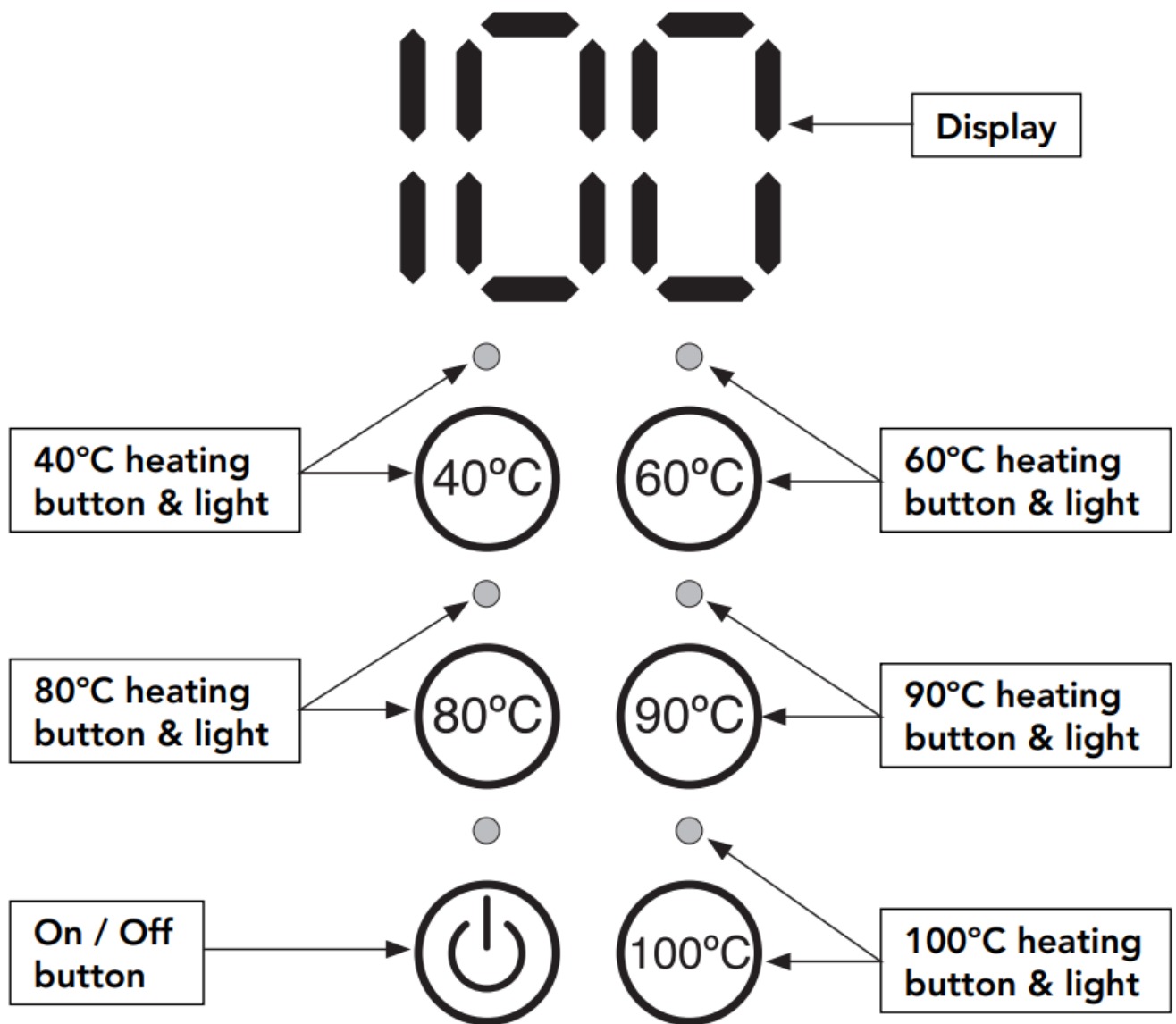
What's in the box



Features




Control panel









DISPLAY

The display shows the temperature of the water in the kettle. If the temperature of the water in the kettle is below 60°C the display will automatically switch off after 1 minute.

Press the  button to turn the display back on. When the water is over 60°C, the display will stay on showing the temperature of the water.

BUTTONS

	Press to turn the kettle display on. Press to start or stop the boiling process.
	Press to heat the water to 100°C.
	Press to heat the water to 90°C.
	Press to heat the water to 80°C.
	Press to heat the water to 60°C.
	Press to heat the water to 60°C.

Please note

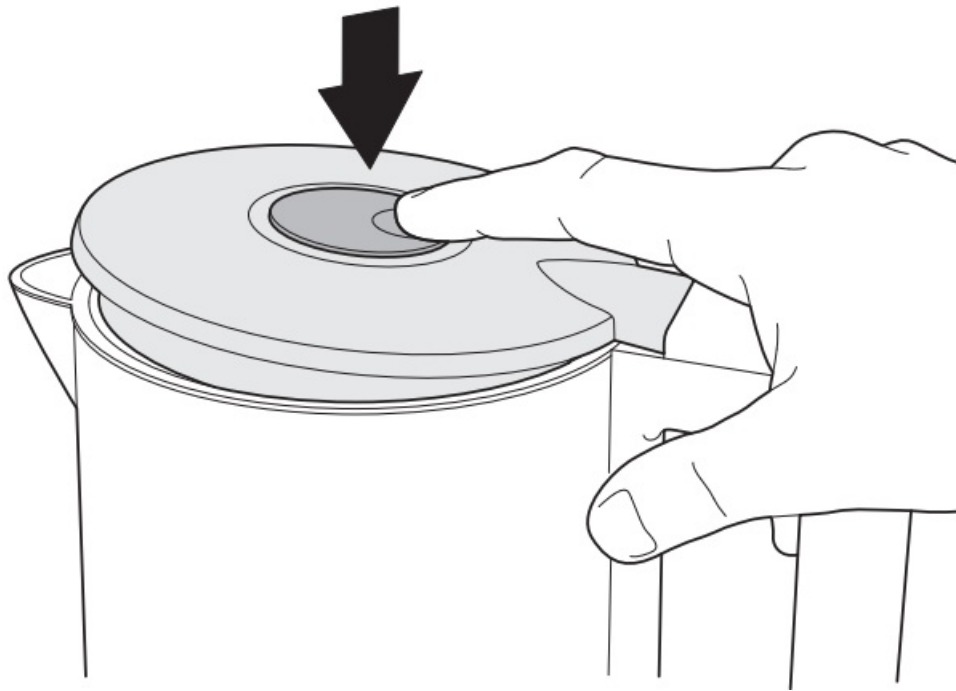
If you're using the kettle for the first time, we recommend cleaning before use by boiling and discarding a full kettle of water twice. Then simply wipe the surface down with a damp cloth.

If you accidentally boil the kettle when it's empty, the kettle will switch off automatically. If this happens, allow the kettle to cool before filling it with cold water and re-boiling.

You can shut off the power whilst the kettle is boiling by pushing the on/off button again.

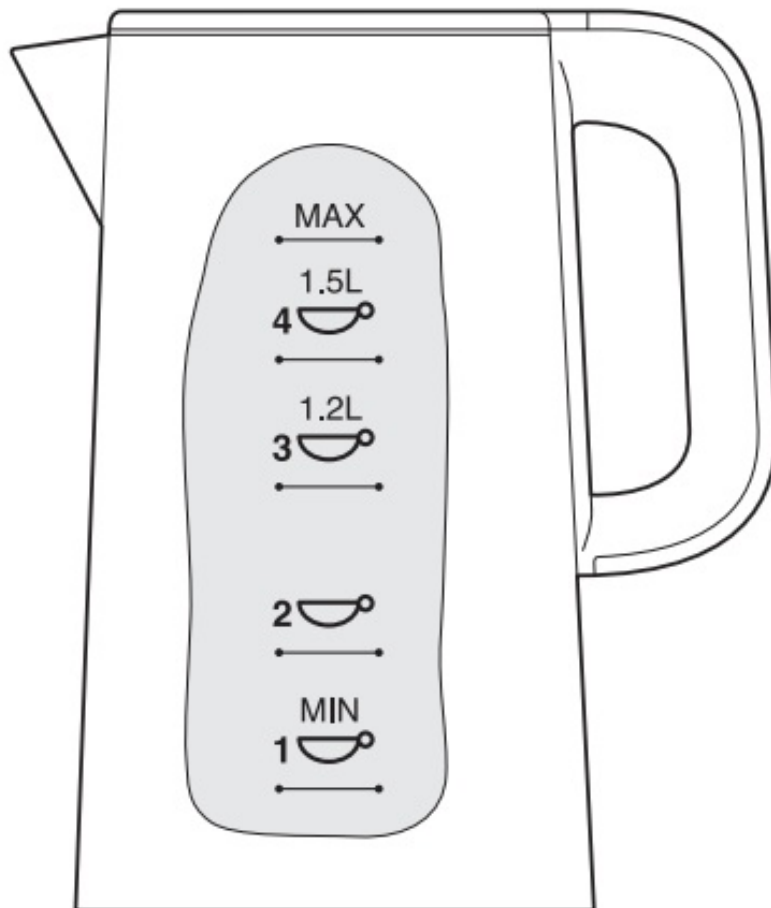
Using your kettle

1. Press the lid opening button on the top of the lid downwards.



The lid will open automatically after pressing the button.

2. If you look at the inside of the kettle you will see the filling guide.



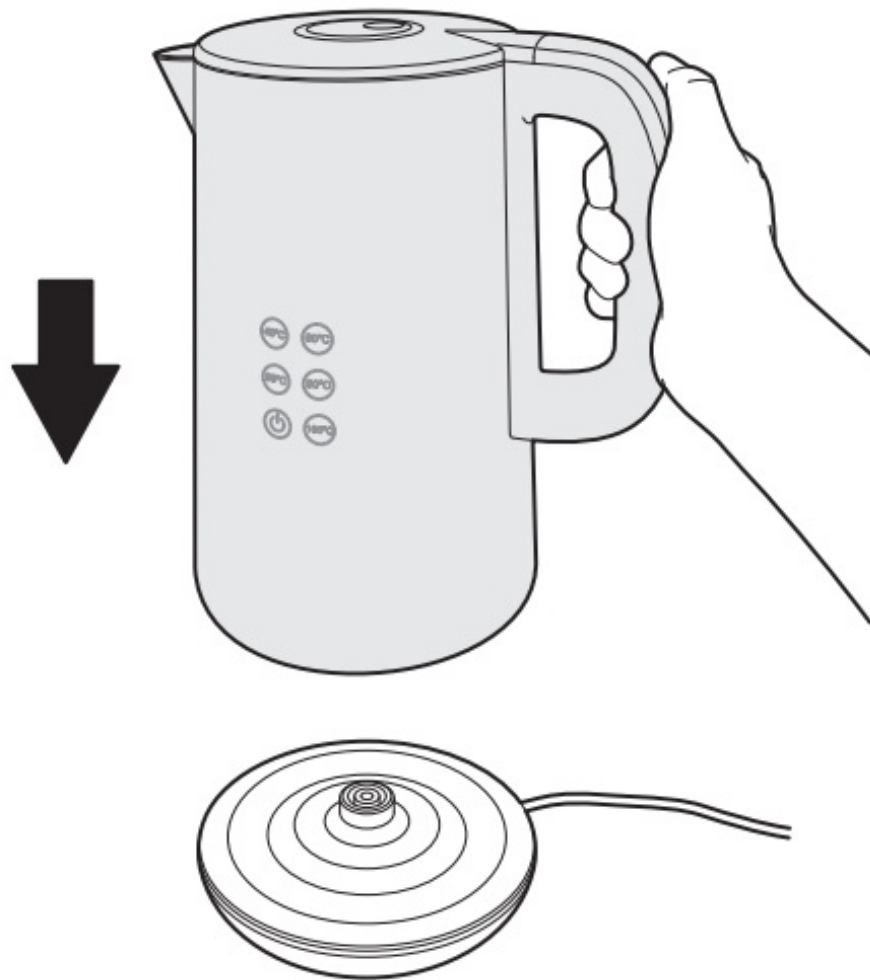
You **MUST** fill the kettle above the MIN level but **MUST NOT** exceed the MAX level.

3. Fill the kettle with water to the desired level.

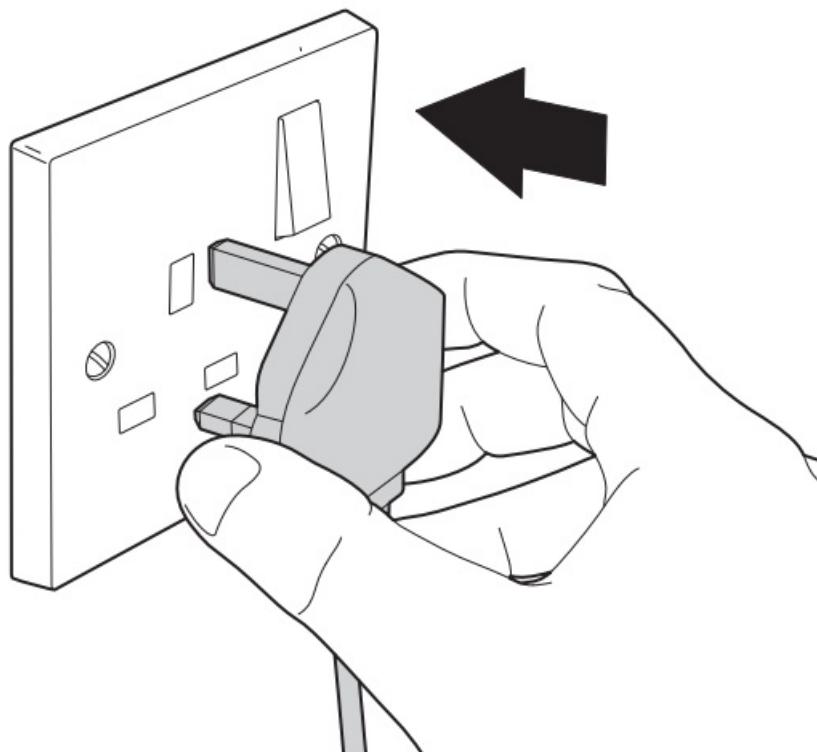


Push the lid closed (avoid touching the lid button).

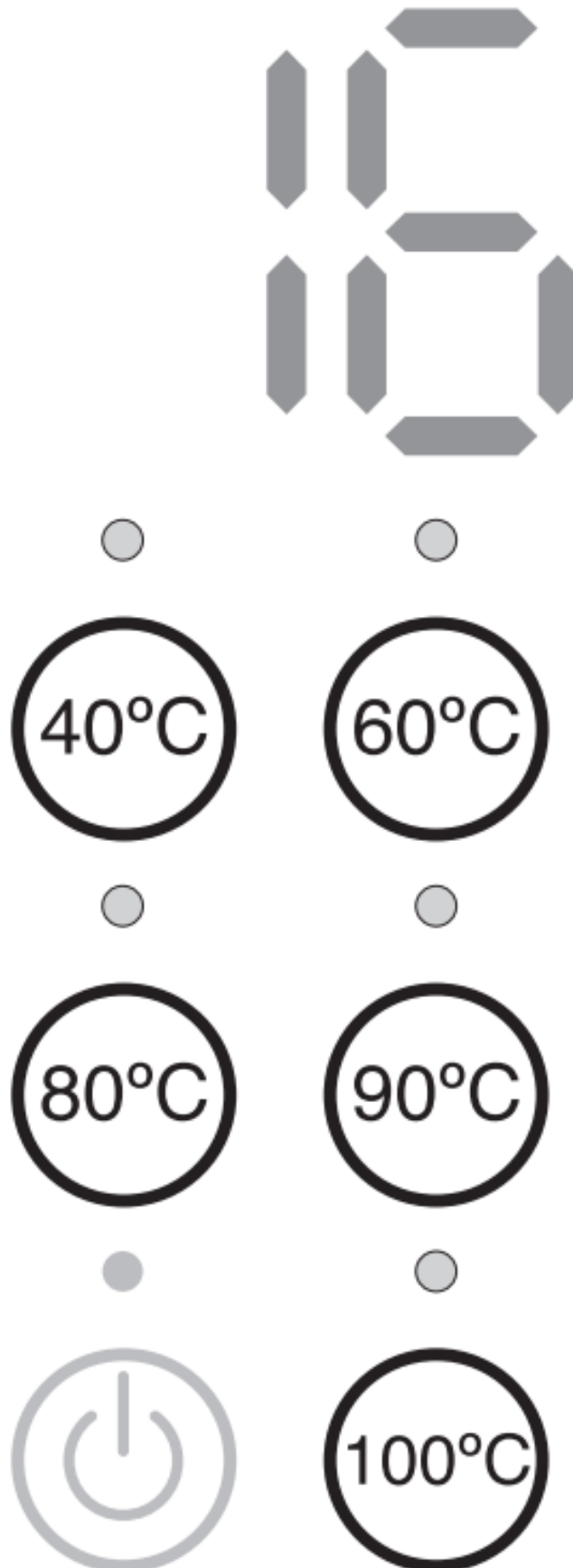
4. Place the kettle onto the power base.



5. Slot the plug into an electrical socket and then turn the power on if required. The display will light and show the current water temperature, ready to use. After 1 minute of inactivity, the kettle will go into standby mode- press the button to wake the kettle if needed.

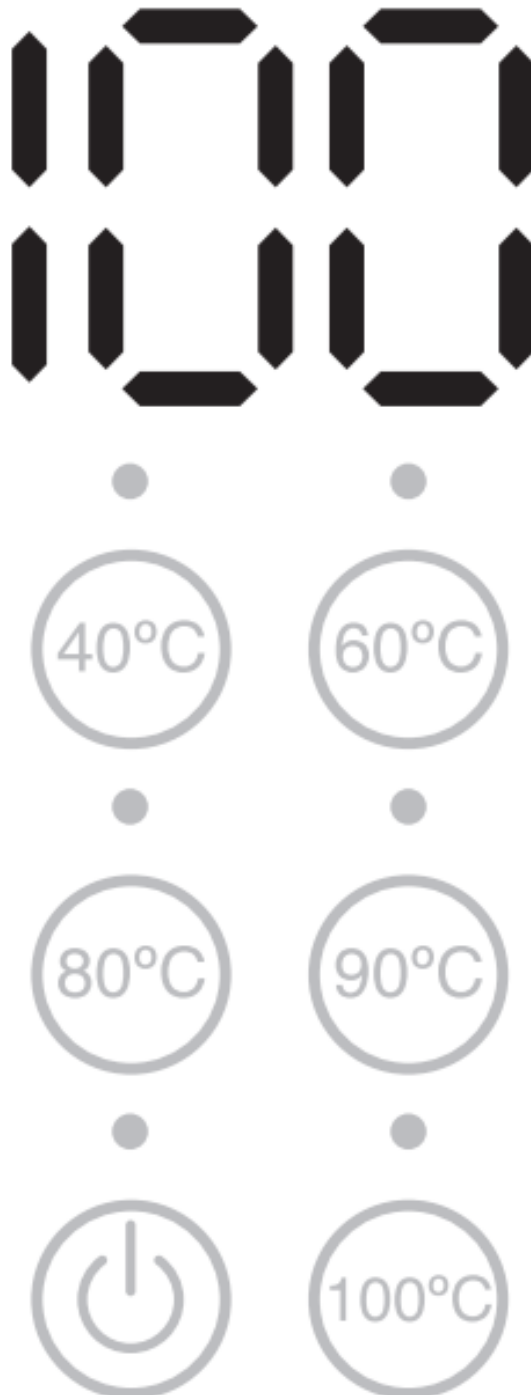



6. Select the temperature you wish to use by pressing one of the five pre-set temperature buttons. After 3 seconds the kettle will begin to heat. The light around the bottom of the kettle will illuminate to let you know boiling has begun. The display will show the live temperature change.

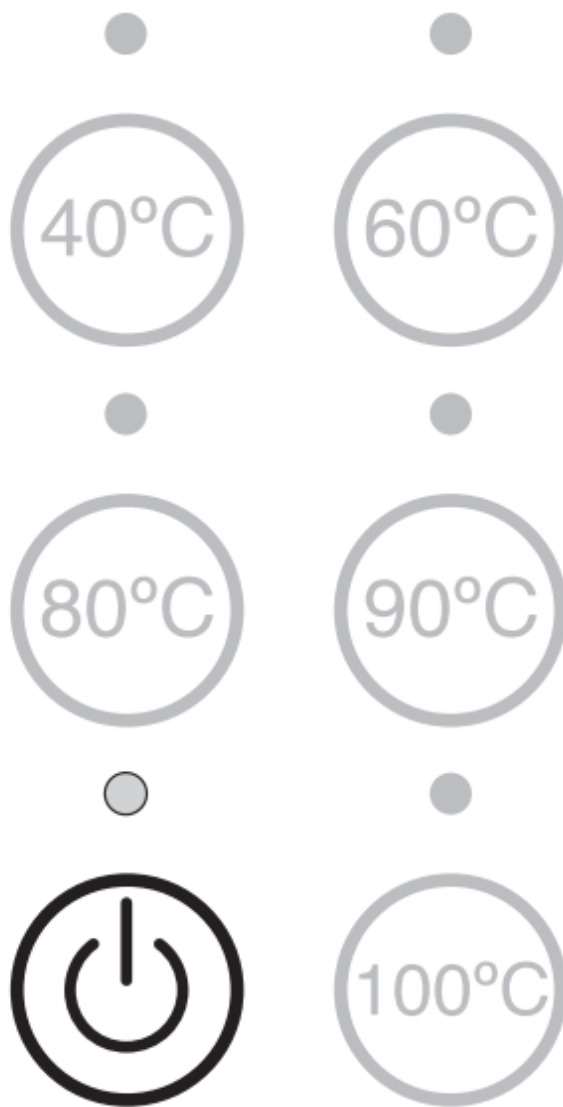


Note: You can change the water temperature when the kettle is boiling by pressing one of the other pre-set temperature buttons. When heating small quantities of water (e.g. 1-2 cups), the final temperature may be slightly higher than the selected option, particularly when using the lower temperature options. The display will show the live temperature of the water. For accurate results when heating to 40°C or 60°C, we recommend to fill the kettle with at least 3 cups of water.

7. When the water in the kettle reaches the desired temperature the kettle will automatically switch off.



8. Standby mode: To conserve energy, the kettle will go into standby mode if no button is pressed after 1 minute once the water temperature is below 60°C. Press  the button to wake the kettle, then press your preferred temperature button.



Cleaning your kettle

- First read the instructions in the section titled “WARNINGS.
- Always disconnect the kettle from electrical outlet before cleaning.
- Before cleaning make sure the kettle is cold enough.
- Empty the kettle, clean the exterior surface of the kettle with a clean, damp cloth to preserve its original highly polished finish. Dry and clean with a soft cloth.
- Do not use abrasive cleansers or scouring agents of any kind inside or on the exterior of the kettle.
- Only use the dry cloth to wipe the base of the kettle.
- Avoid wetting the electrical parts.
- NEVER immerse the kettle or power base in water or other liquid, and make sure the electrical kettle socket is kept dry.

Boil dry safety function

When the kettle is boiled without enough water it will shut down and must be allowed to cool before it can be used again.

When the kettle has cooled and reset, you can fill it with water and use as normal.

Descaling your kettle

Your kettle should be de-scaled regularly, depending on how often you use it and how hard your water is. Excessive scale can cause the kettle to switch off before boiling and may damage the elements, affecting your

warranty.

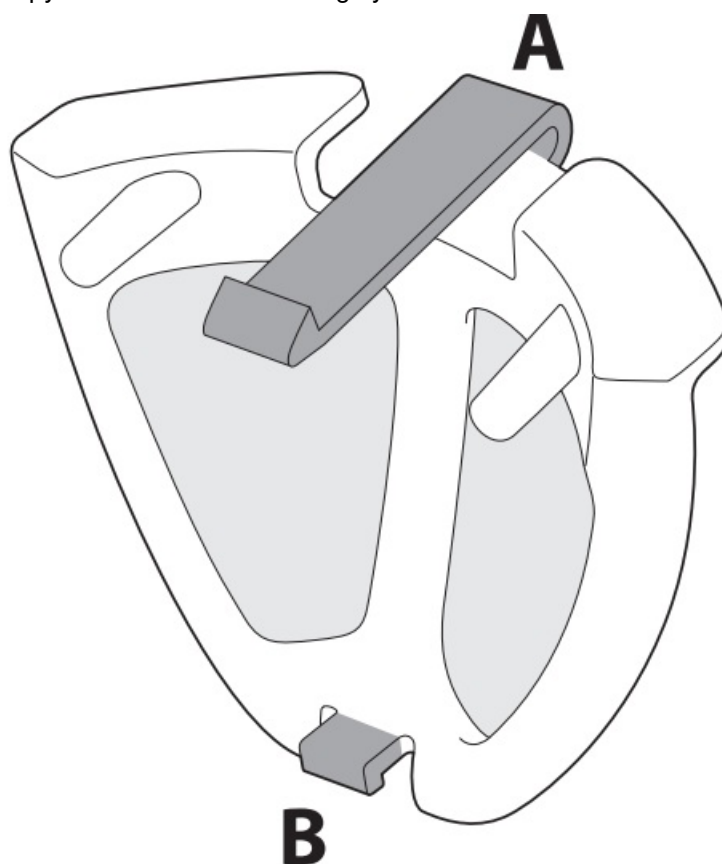
Half fill the kettle with tap water and add the juice of 1 lemon to the water. Boil this mixture and allow it to stand for 15 minutes. Re-boil the mixture and allow it to stand a further 15 minutes. Re-boil this mixture a third time then rinse the kettle well.

Or purchase an all-purpose de-scaling product suitable for your kettle and follow the instructions on the pack. Ensure the electric connections are completely dry before using the kettle.

Cleaning the filter

Make sure the device is disconnected from the power outlet, and the kettle is empty and completely cool.

1. To clean the filter, remove it by simply pushing the tab (A) in the top of the filter downwards, then pull the filter and out of its housing.
2. Wash the filter in warm, soapy water and rinse thoroughly.



3. Refit the filter by aligning the bottom lug (B) on the filter with the bottom slot in the spout. Then push the top tab (A) on the filter back into its housing until it locks in place.



If for any reason you're not completely satisfied with our product, return it within 100 days with your proof of purchase, and we'll give you an exchange or a refund. UK Mainland stores only.

Excludes franchises. The guarantee excludes flat pack furniture, which can't be returned if it has been partly or fully assembled unless faulty or mis-described.

Also excludes mattresses, which can't be returned for hygiene reasons once used, unless faulty or mis-described.

Need something else? www.GEORGE.com

We have a wide range of accessories and other products that can be ordered direct to your door.

Customer services information

If you require further information, spare parts or advice regarding your product, or if you are experiencing any problems, please contact customer services at the telephone number or address shown opposite. N.B. When calling or writing please quote the product name.

Call..... 0800 952 0101

Write..... ASDA, Leeds LS11 5AD

Product name: GDK101B-22 Digital Controlled Kettle

Product site code: 15A.09.22.145



To qualify for the 2 year warranty the appliance must have been used according to the manufacturer's instructions. For example kettles should have been regularly de-scaled. If your appliance stops working or develops a fault then return it to your nearest store and we will happily replace or refund the item, with exception of the below exclusions: **EXCLUSIONS**

ASDA shall not be liable to replace goods under the terms of the warranty where:

1. The fault has been caused or is attributable to accidental use, misuse, negligent use or use contrary to the user manual's recommendations or where the fault has been caused by power surges or damage caused in transit.
2. The appliance has been used on a voltage supply other than that described on the product rating label.
3. Repairs have been attempted by persons other than our service staff (or authorised dealer).

4. Where the appliance has been used for hire purposes or non-domestic use.
5. ASDA are not liable to carry out any type of servicing work, under the warranty.

This warranty does not confer any rights other than those expressly set out above and does not cover any claims for consequential loss or damage. This warranty is offered as an additional benefit and does not affect your statutory rights as a consumer. If for any reason this item is replaced during the 2 year warranty period, the warranty on the new item will be calculated from original purchase date. It is vital to retain your original proof of purchase to indicate the date of initial purchase.

Copyright

© 2022 ASDA Stores Limited.

All other trademarks appearing herein are the property of their representative owners. Specifications are subject to change without notice.


Manufactured for: ASDA, Leeds LS11 5AD/ ASDA, Antrim BT41 4GY.

Disposal

This symbol on the product or in the instructions means that your electrical and electronic equipment should be disposed at the end of its life separately from your household waste. There are separate collection systems for recycling in the UK. For more information, please contact the local authority or your retailer where you purchased the product.



Documents / Resources

	<p>George home GDK101B-22 Digital Controlled Kettle [pdf] User Guide</p> <p>GDK101B-22, Digital Controlled Kettle, Controlled Kettle, Digital Kettle, Kettle, GDK101B-22 Kettle</p>
---	---