

GEOPHYSICAL
MN73-254 LT NX
Concrete Scanning
Survey Systems



MN73-254 LT NX Concrete Scanning Geophysical Survey Systems User Guide

[Home](#) » [Geophysical](#) » MN73-254 LT NX Concrete Scanning Geophysical Survey Systems User Guide 

Contents

- 1 [Geophysical MN73-254 LT NX Concrete Scanning Survey Systems](#)
- 2 [Specifications](#)
- 3 [Product Usage Instructions](#)
- 4 [Have Questions?](#)
- 5 [Standard and Optional Accessories](#)
- 6 [Flex LT Physical Features](#)
- 7 [Flex LT Handle Adjustments](#)
- 8 [Powering Flex LT](#)
- 9 [Antenna and Marker Positions](#)
- 10 [Flex LT Dashboard](#)
- 11 [Flex LT Settings](#)
- 12 [Select Concrete Type](#)
- 13 [Data Collection Screen](#)
- 14 [Collecting GPR Data](#)
- 15 [Improving Data Visualization](#)
- 16 [Adjusting Display Options](#)
- 17 [Warranty Information](#)
- 18 [FAQs](#)
- 19 [Documents / Resources](#)
 - 19.1 [References](#)

GEOPHYSICAL

Geophysical MN73-254 LT NX Concrete Scanning Survey Systems



Specifications

- **Model:** Flex LT
- **Physical Features:**
 - Fully adjustable and removable handle
 - Colored markers for layout
 - 7in (17.8cm) High-Resolution Touchscreen
 - External USB Port
 - Environmental Rating: IP65
 - User Programmable Buttons Power On/Off

Product Usage Instructions

Flex LT Handle Adjustments

To adjust the handle:

1. Loosen the knob.
2. Reorient the handle to the desired position.
3. Tighten the knob to secure the handle.
4. To remove the handle, fully loosen the knob.

Powering Flex LT

To power on:

1. Press both buttons simultaneously.
2. Hold both buttons to power off.
3. Make sure the battery contacts are facing toward Flex LT and facing upward when inserting the battery.

Antenna and Marker Positions

Flex LT incorporates two GPR antennas with colored markers:

- Red markers indicate the center points of the Standard Orientation antenna.
- Green markers indicate the center points of the Cross Polarized antenna.

Flex LT Dashboard

The Main Dashboard is where Flex LT starts every new session. You can access system settings and start a 2D scan from this dashboard.

Flex LT Settings

The Settings Menu allows you to customize your Flex LT experience by assigning quick button options, adjusting volume, screen brightness, time/date, changing units, and language settings.

Have Questions?

We've Got Your Back

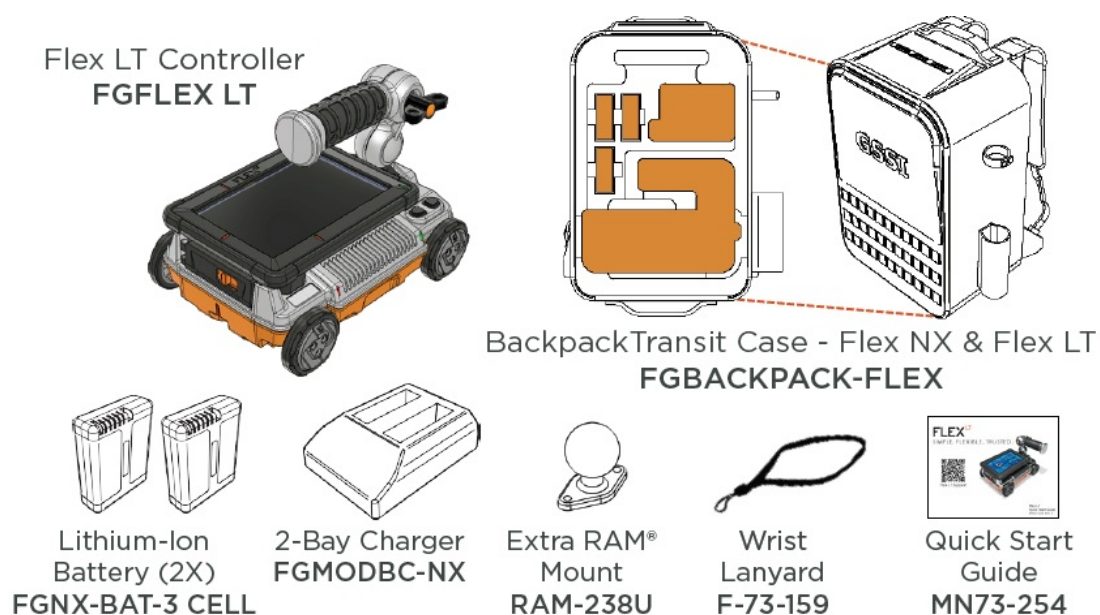
Our promise to you is to provide comprehensive training, unrivaled customer support, and world-class expertise. That's why your Flex LT comes with our industry-leading two-year warranty, complimentary training, and technical support access. For more information, visit us at www.geophysical.com.

We're Committed to Your Success

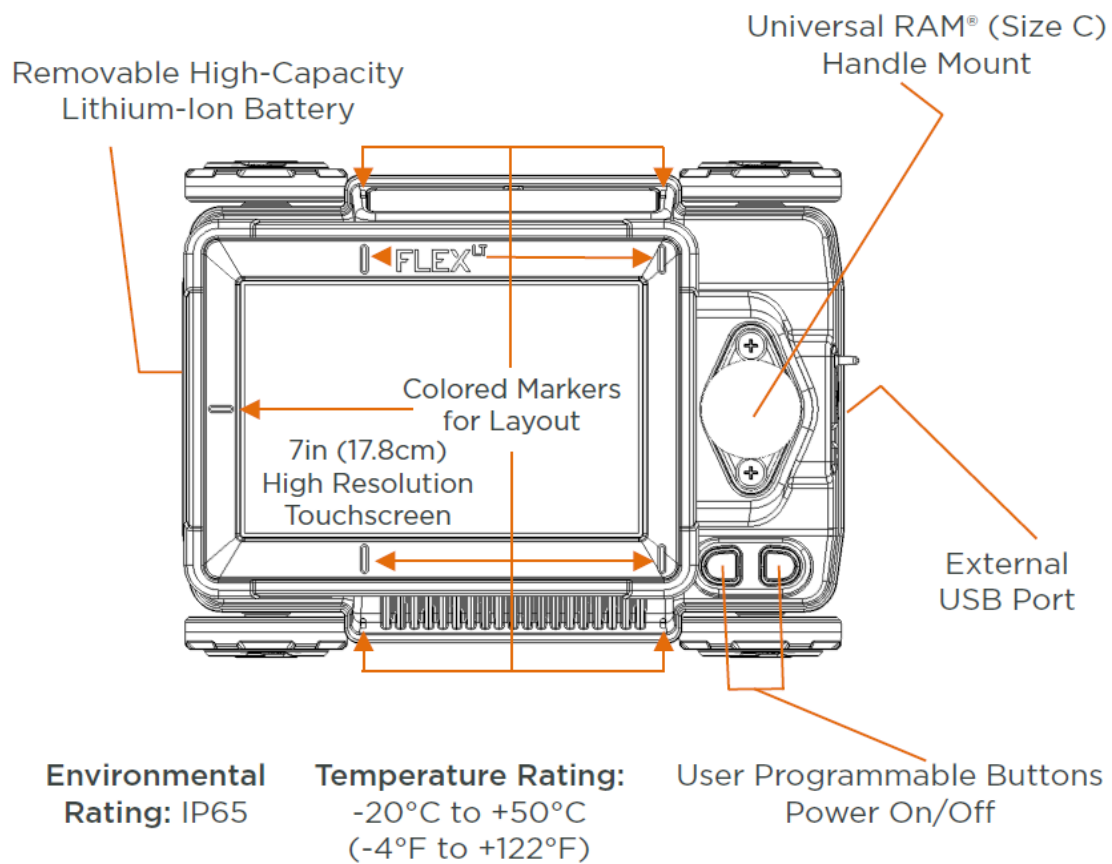
Our team of dedicated technical trainers is ready to work with users of all experience levels. GSSI Academy classes are offered on a revolving annual schedule. Check out the GSSI Academy offerings at www.geophysical.com/gssi-academy.



Standard and Optional Accessories

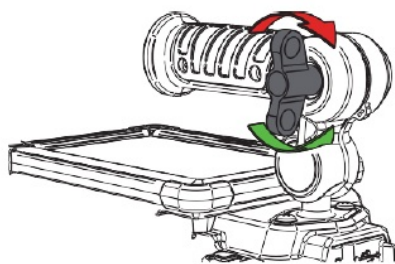


Flex LT Physical Features

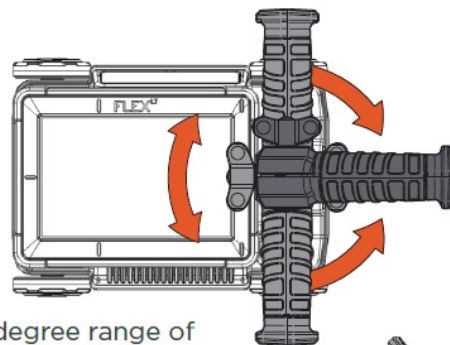
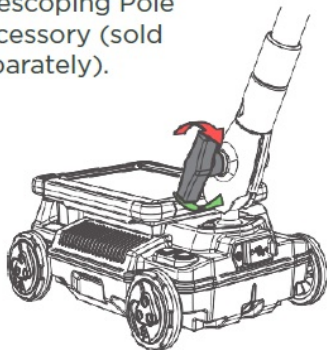


Flex LT Handle Adjustments

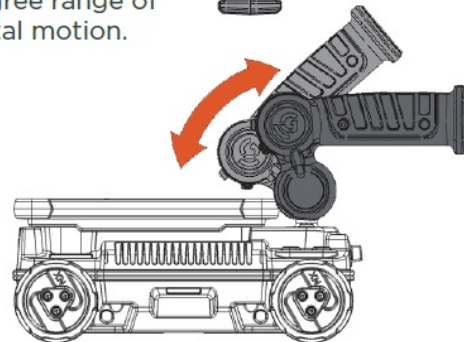
Your Flex LT features a fully adjustable and removable handle. To adjust, simply loosen the knob, reorient the handle, and tighten. To remove the handle, fully loosen the knob.



Remove the Flex LT handle to attach the Telescoping Pole Accessory (sold separately).

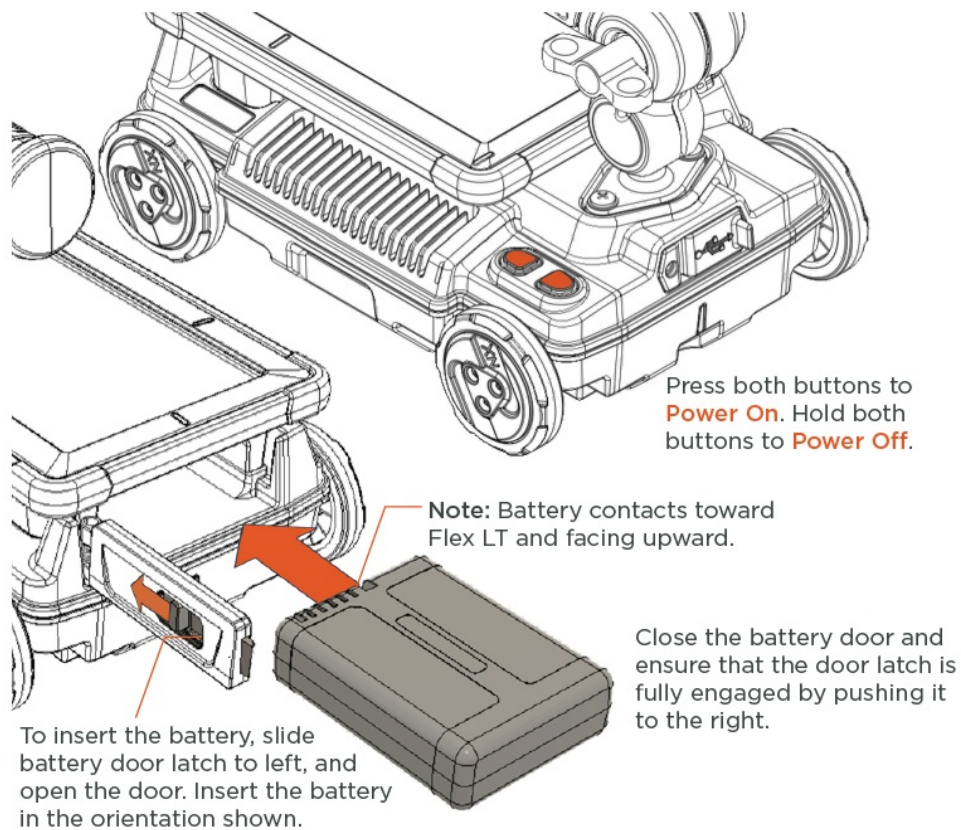


360 degree range of horizontal motion.



Vertical range of movement is limited to prevent display damage.

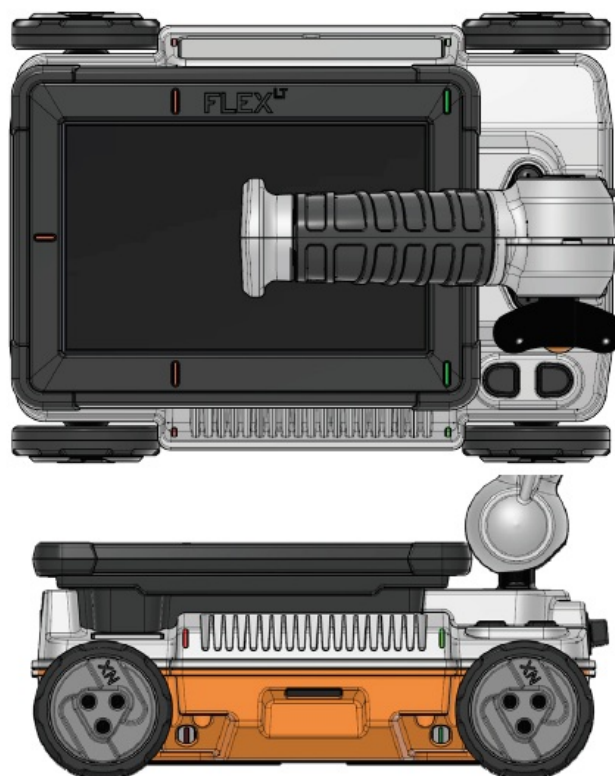
Powering Flex LT





Antenna and Marker Positions

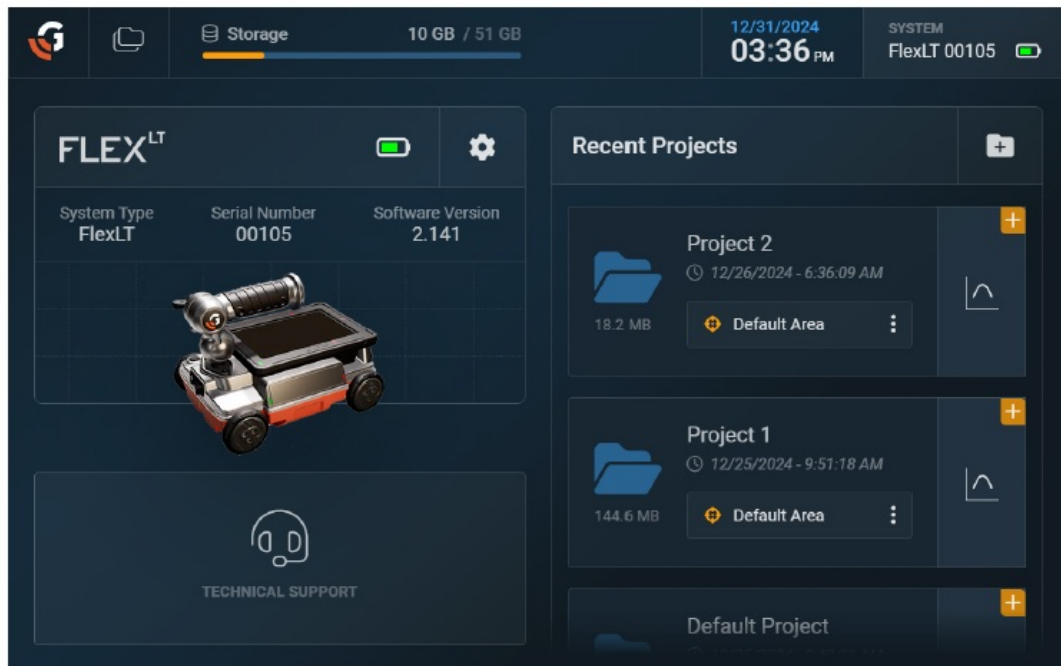
Flex LT incorporates two individual GPR antennas:

A Standard Orientation antenna (in front) and a Cross Polarized antenna (in back). The center of each antenna has colored markers for highly accurate markouts. Red markers, located on the top, front, and sides, show the center points of the Standard Antenna. These markers are aligned to the red backup cursor during collection. Green markers, located on the top, back, and sides, show the center points of the Cross Polarized Antenna. These markers are aligned to the green backup cursor during collection. Scanning with both antennas produces a more detailed and informative view of concrete targets, especially for complex jobs.



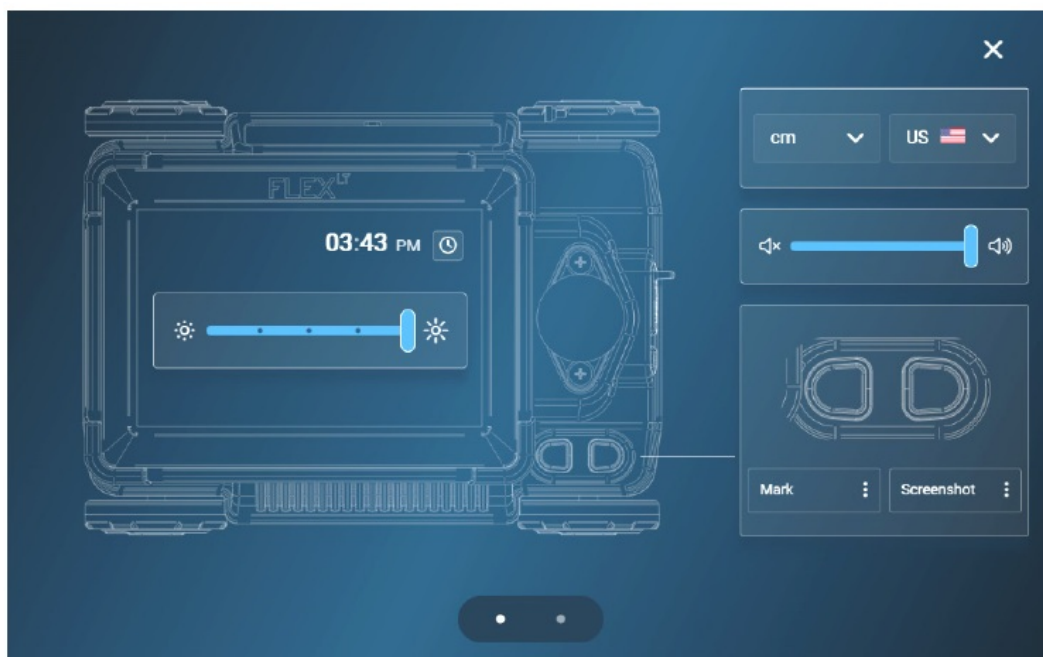
Flex LT Dashboard

- After powering on, Flex LT will start every new session on the Main Dashboard.
- Tap the  icon to access system settings. Tap the  icon to start a 2D scan



Flex LT Settings

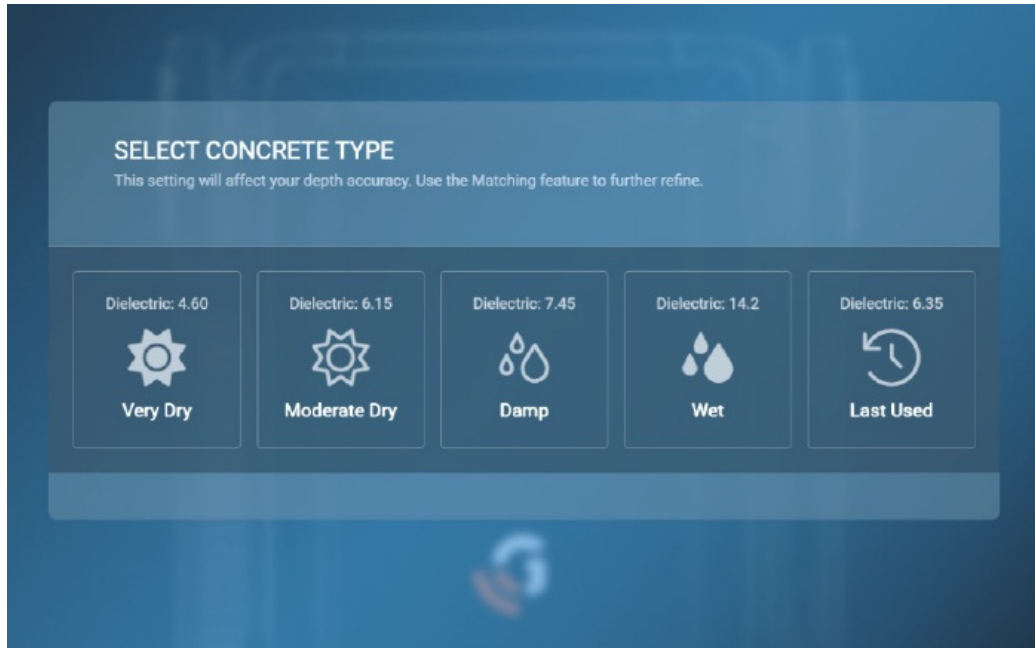
The Settings Menu is the control panel for customizing your Flex LT experience. Use this menu to assign quick button options, adjust volume, screen brightness, and time/date, and change units and language settings. Tap the X to return to the Main Dashboard.



Select Concrete Type


- Select the appropriate Concrete Type based on the state of the concrete cure.

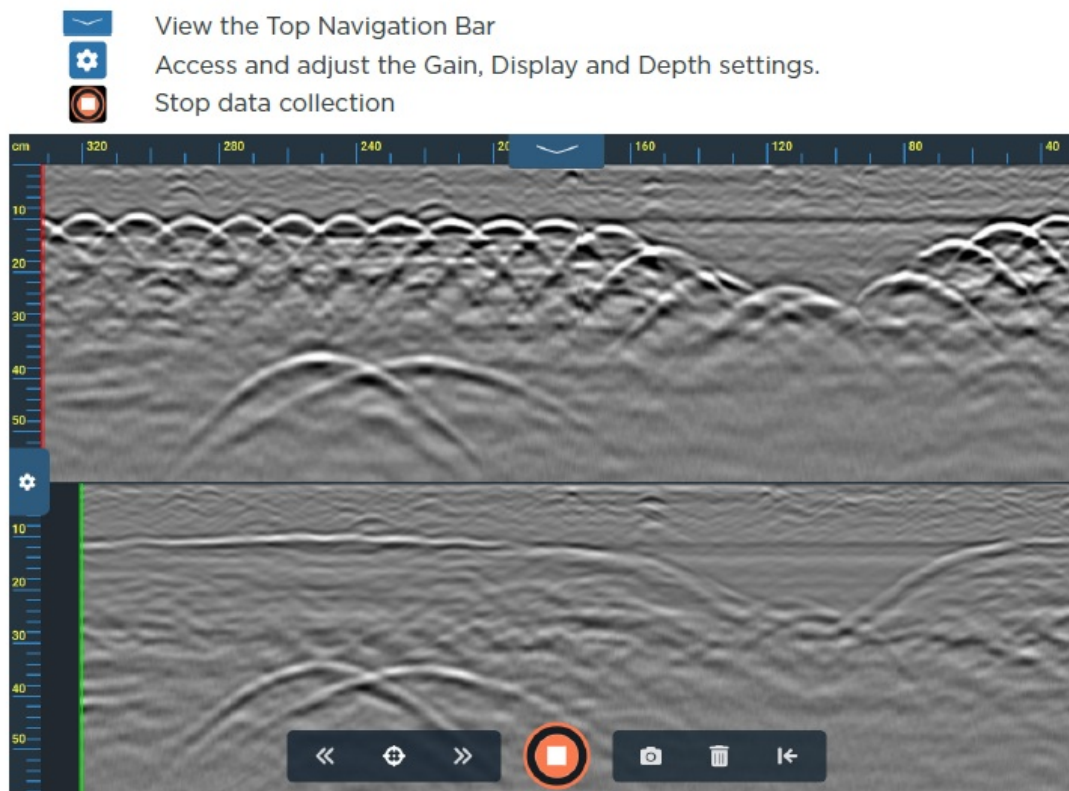
- This menu only appears once during each session.
- This setting will greatly impact depth readings. While collecting or viewing data, use the Depth Settings Menu to further refine the depth scale accuracy.



- The Last Used option will reuse the dielectric value from previous sessions.

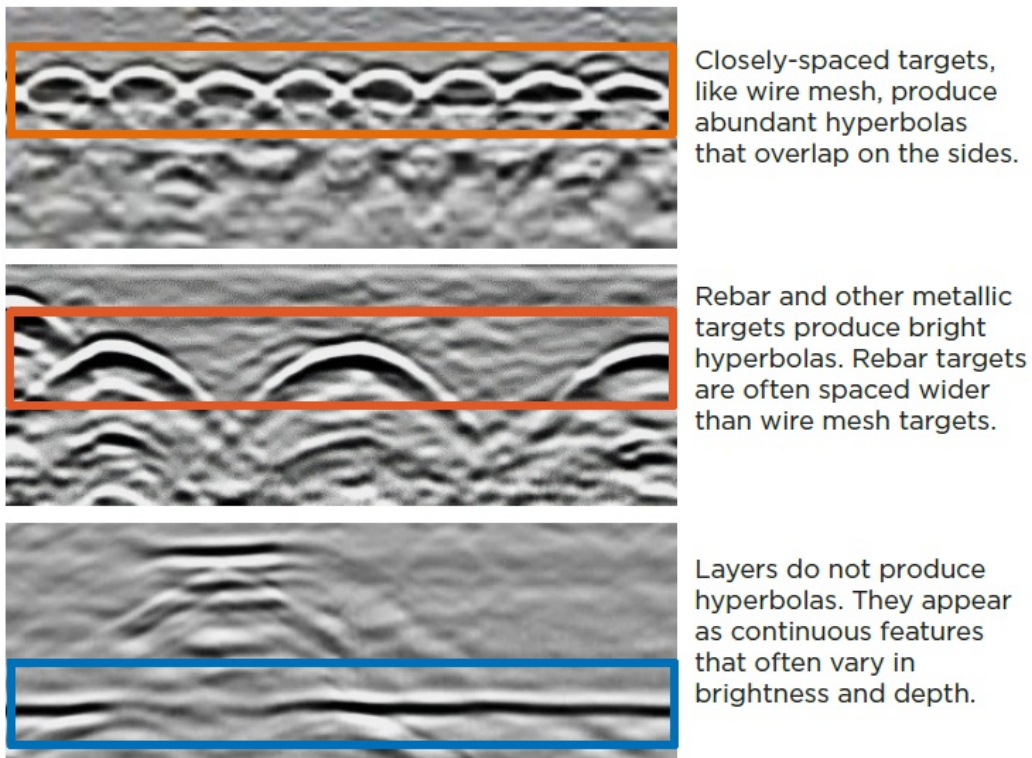
Data Collection Screen

A blank data collection screen will appear. Tap the  icon to initiate a scan, and then move Flex LT forward to begin collecting data. Data will populate from left to right. Move Flex LT in reverse to view backup cursors that align with the red and green colored markers on the top, sides, and front and back of the system.





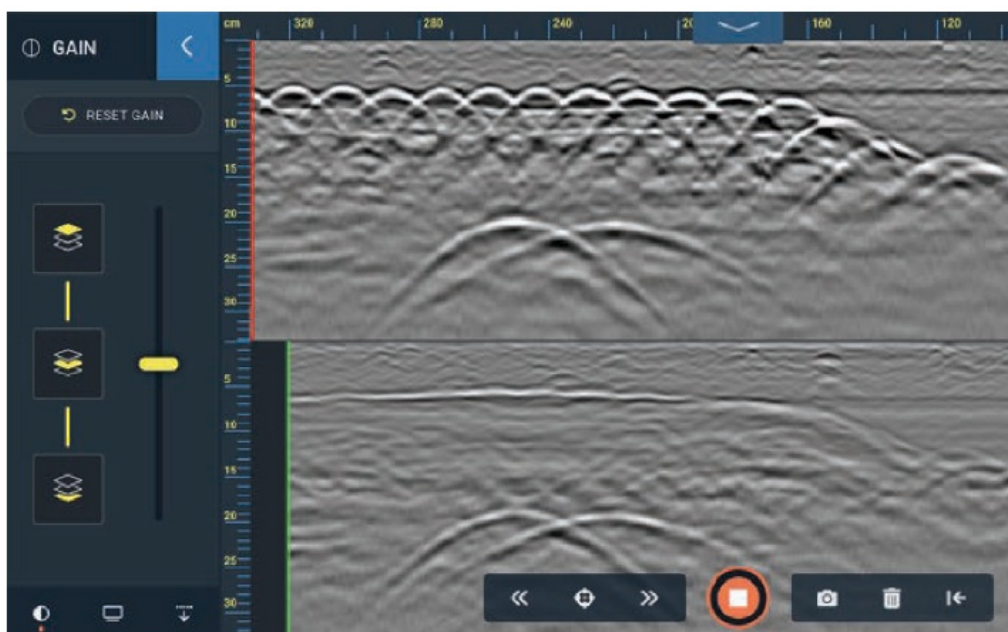
Collecting GPR Data

The GPR data will reveal two distinct categories of reflections: targets, and layers. Targets, such as rebar and conduit, are discrete objects below the surface and are represented by hyperbolas (orange boxes). Layers are continuous features, like the slab/grade contact (blue box).




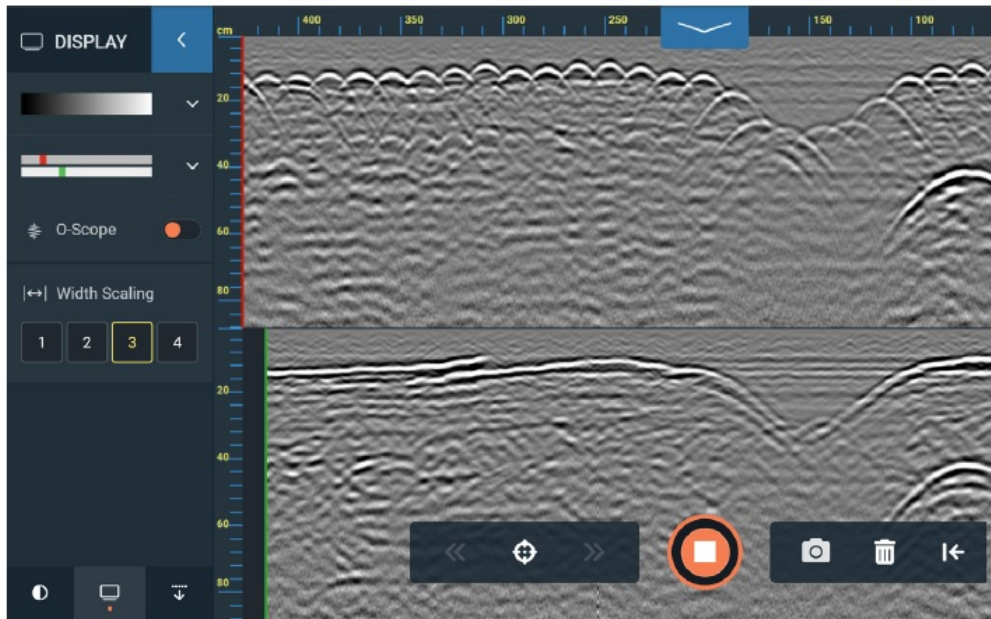
Improving Data Visualization

Tap the  icon on the depth scale to open a window with three nested menus: Gain, Display, and Depth. For now, click the Gain icon  in the lower left. Here you can use the slider to adjust the overall contrast of the data or select one of three general depth levels (shallow, medium, deep) to selectively adjust contrast.



Adjusting Display Options

Tap the  icon at the bottom of the panel to adjust the Display settings. Here you can quickly change your data display from the split screen with both antennas to full-screen options for the standard (front) and cross-polarized (rear) antennas. You can also adjust color tables, toggle the O-Scope, or adjust Width Scaling.



Warranty Information

Limited Warranty, Limitations of Liability and Restrictions

Geophysical Survey Systems, Inc. hereinafter referred to as GSSI, warrants that for 24 months from the delivery date to the original purchaser, this product will be free from defects in materials and workmanship. EXCEPT FOR THE FOREGOING LIMITED WARRANTY, GSSI DISCLAIMS ALL WARRANTIES, EXPRESS OR IMPLIED, INCLUDING ANY WARRANTY OF MERCHANTABILITY OR FITNESS FOR A PARTICULAR PURPOSE. GSSI's obligation is limited to repairing or replacing parts or equipment which are returned to GSSI, transportation and insurance prepaid, without alteration or further damage, and which in GSSI's judgment, were defective or became defective during normal use.

GSSI ASSUMES NO LIABILITY FOR ANY DIRECT, INDIRECT, SPECIAL, INCIDENTAL, OR CONSEQUENTIAL DAMAGES OR INJURIES CAUSED BY PROPER OR IMPROPER OPERATION OF ITS EQUIPMENT, WHETHER OR NOT DEFECTIVE. Before returning any equipment to GSSI, a Return Material Authorization (RMA) number must be obtained. Please call the GSSI Customer Service Manager who will assign an RMA number. Be sure to have the serial number of the unit available.

- Regulatory Information: <https://www.geophysical.com/regulatoryinformation>
- Copyright © 2023-2025 Geophysical Survey Systems, Inc.
- All rights reserved including the right of reproduction in whole or in part in any form.
- Published by Geophysical Survey Systems, Inc., 40 Simon Street Nashua,
- New Hampshire 03060-3075 USA. Printed in the United States. Flex NX, Nexus, and GSSI Fusion are registered trademarks of Geophysical Survey Systems, Inc.

Geophysical Survey Systems,

- Inc
- 40 Simon Street

- Nashua, NH 03060-3075 USA
- Patent www.geophysical.com/patents



Flex LT Support

FAQs

- **Q: How do I adjust the handle on Flex LT?**

A: To adjust the handle, loosen the knob, reorient the handle, and tighten the knob. To remove the handle, fully loosen the knob.


- **Q: How do I power on/off Flex LT?**

A: Press both buttons simultaneously to power on. Hold both buttons to power off.



- **Q: What do the colored markers on Flex LT antennas signify?**

A: Red markers indicate the center points of the Standard Orientation antenna, while green markers indicate the center points of the Cross Polarized antenna.

Documents / Resources

	<p>Geophysical MN73-254 LT NX Concrete Scanning Geophysical Survey Systems [pdf] User Guide</p> <p>MN73-254 LT, MN73-254 LT NX Concrete Scanning Geophysical Survey Systems, NX Concrete Scanning Geophysical Survey Systems, Scanning Geophysical Survey Systems, Geophysical Survey Systems, Survey Systems</p>
---	---

References

-  [Ground Penetrating Radar \(GPR\) Equipment | GSSI Inc. | Georadar](#)
-  [Patents - GSSI Geophysical Survey Systems, Inc.](#)
- [User Manual](#)

Manuals+, Privacy Policy

This website is an independent publication and is neither affiliated with nor endorsed by any of the trademark owners. The "Bluetooth®" word mark and logos are registered trademarks owned by Bluetooth SIG, Inc. The "Wi-Fi®" word mark and logos are registered trademarks owned by the Wi-Fi Alliance. Any use of these marks on this website does not imply any affiliation with or endorsement.