



Anco Retaining
Edge



GEO Anco Retaining Edge Installation Guide

[Home](#) » [geo](#) » GEO Anco Retaining Edge Installation Guide 

Contents

- [1 GEO Anco Retaining Edge](#)
- [2 Materials & Parts](#)
- [3 Equipment Required](#)
- [4 Installation Guide](#)
- [5 Documents / Resources](#)
 - [5.1 References](#)



GEO Anco Retaining Edge



Materials & Parts



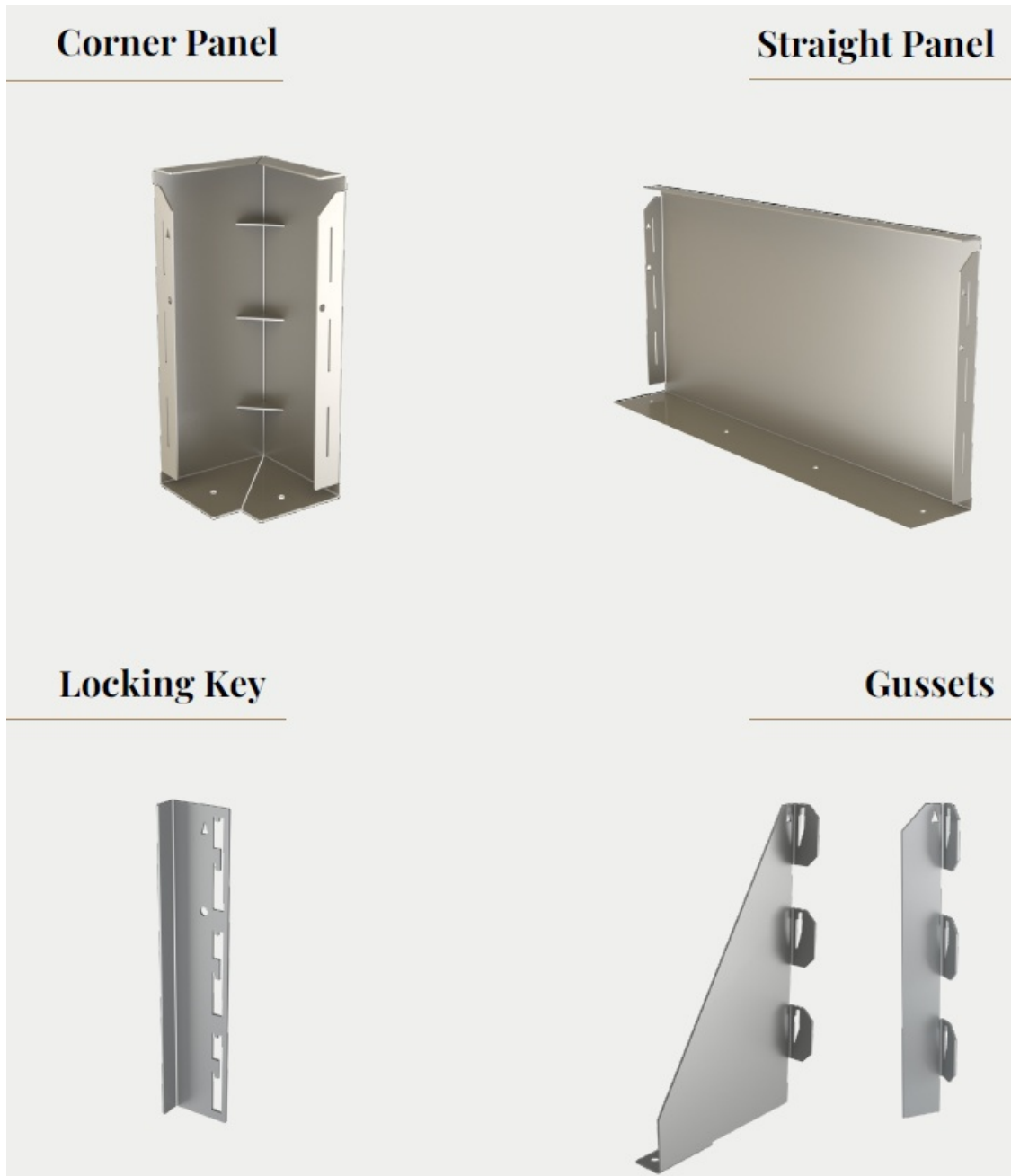
Parts List

- Planter Section
- Gussets
- Locking Key
- Ground Fixings
- Build plan

Equipment Required

- Hammer
- Stringline / Laser Level
- Hammer Drill

- Impact Driver



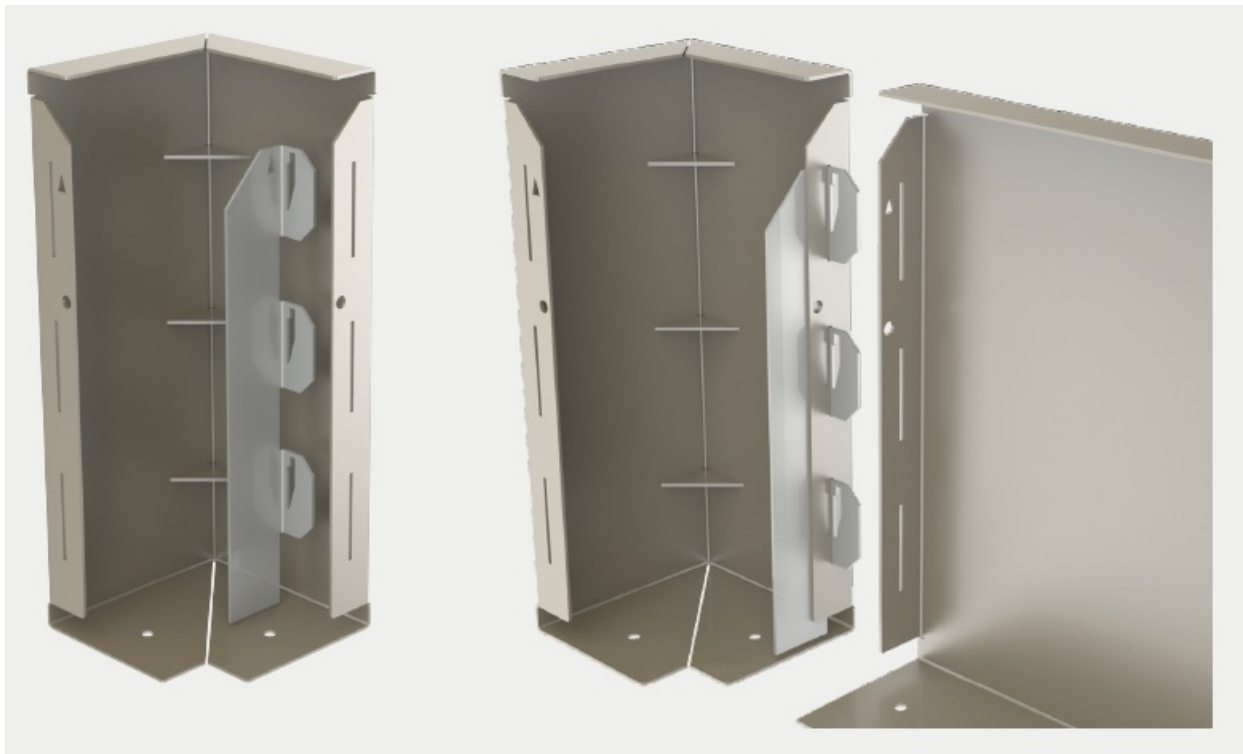
Installation Guide

Step 01

Assess area where planters are to be installed, ensuring that the foundation is suitable. The foundation must be firm, flat, even & free of debris.

Step 02

Starting with a corner section, slide the lugs of the gusset through the matching slots in the panel return. Each panel has a unique reference code which is shown on the drawings. Using this for reference, identify the next panel and slot this over the gusset lugs.



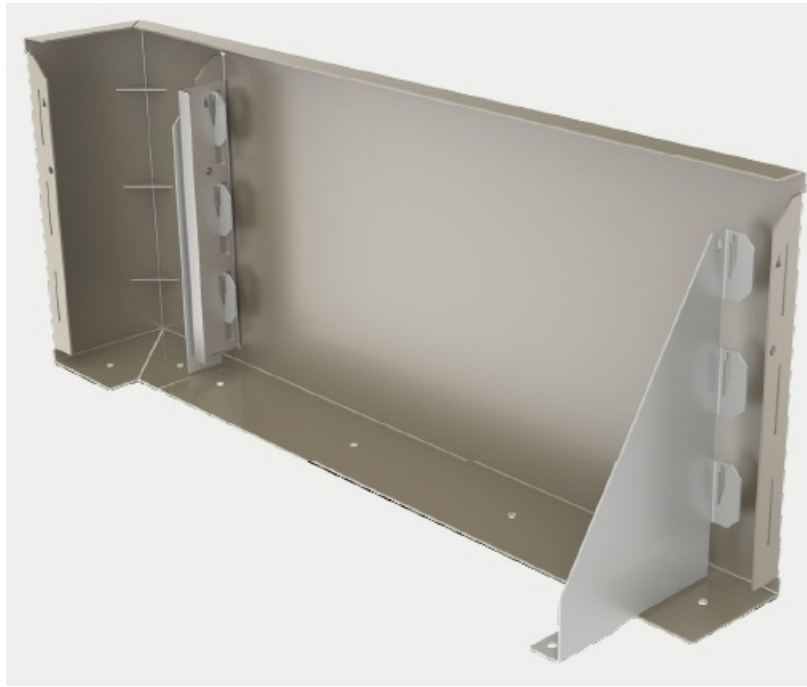
Step 03

Slide the locking key onto the exposed lugs, push forward and down to engage the locking teeth. Now start the process again with the next sections.



Step 04

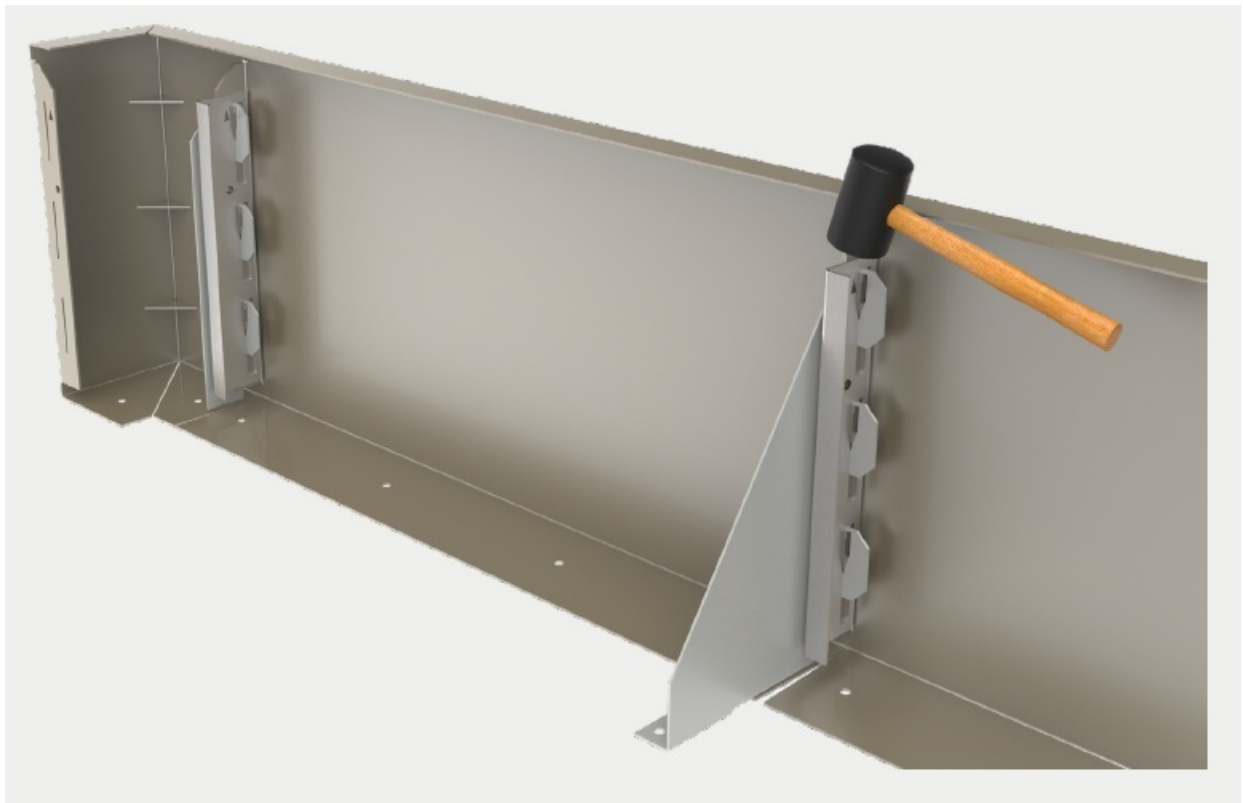
Slide the lugs of the correct structural gusset through the slots in the panel return.

**Step 05**

Add the next corresponding panel shown on the drawings to the exposed lugs, then add the locking key.

**Step 06**

Ensuring front and top edges are flush, drive home the locking key using a hammer to secure all the parts together.



Step 07

Finally, make sure the small triangle cut outs are correctly aligned. This ensures that the locking key is fully engaged and locked in position.

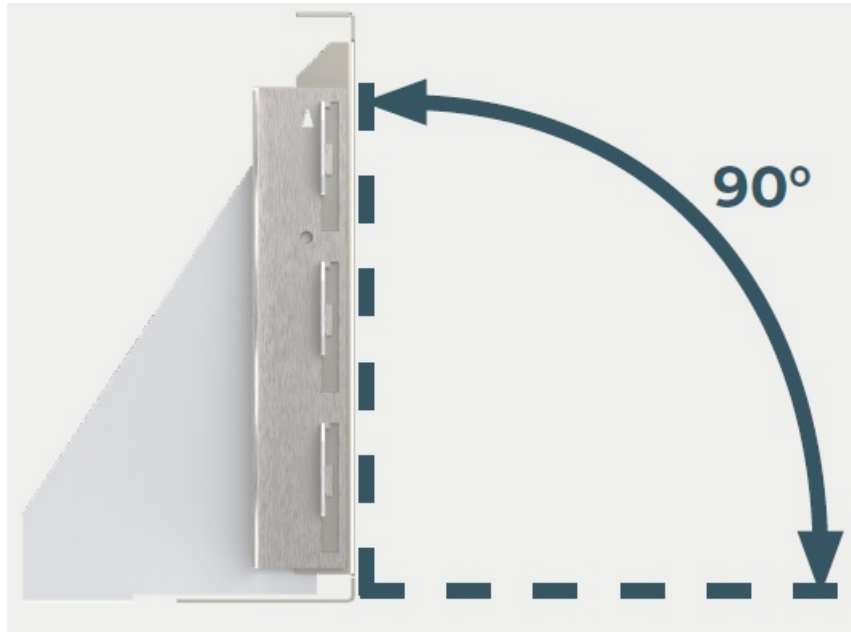


Step 08

Ensure that all the planter sections are installed in accordance with the dimensions and layout as shown on the

build plan.

Alignment must also be checked, and the face of each planter section is 90 degrees vertical. Any variation from this will adversely affect the appearance and stability of the finished planter.



Step 09

Drill through the existing holes into the concrete pad, then fix it in position with ground-fix bolts. Ensure the planter edge stays aligned.



REQUIRE ASSISTANCE?

Contact support on 01642 373400

HANDLING & CARE

Heavy Panels – Some panels may require a two-person lift. Sharp Edges – Always wear gloves.

DISCLAIMER

These instructions are provided to ensure the successful installation and ongoing satisfactory function of the

planter system. Failure to comply may result in, but not limited to, voidance of warranty, failure of planter system, of which Logic will not be held responsible for.

Any damages must be reported within 24 hours of delivery and include images to show such. Any defective parts must be reported prior to installation; Logic reserve the right to reject any claims made after assembly of parts.

Patent no: GB2600394

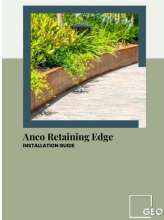
Registered Design – Europe: 008214910 & UK: 90082149100001

CONTACT

Email: configure@logic-bespoke.com

Phone: 01642 373400

Documents / Resources

	<p>GEO Anco Retaining Edge [pdf] Installation Guide Anco Retaining Edge, Retaining Edge, Edge</p>
---	---

References

- [BESPOKE.COM](#)
- [User Manual](#)

Manuals+, Privacy Policy

This website is an independent publication and is neither affiliated with nor endorsed by any of the trademark owners. The "Bluetooth®" word mark and logos are registered trademarks owned by Bluetooth SIG, Inc. The "Wi-Fi®" word mark and logos are registered trademarks owned by the Wi-Fi Alliance. Any use of these marks on this website does not imply any affiliation with or endorsement.