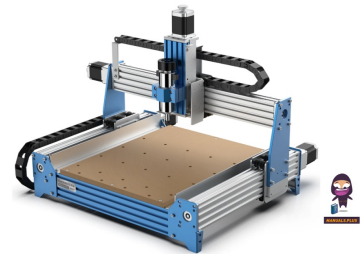


GENMITSU

4030 V1 PROVerXL
Spindle Set



Genmitsu 4030 V1 PROVerXL Spindle Set Instruction Manual

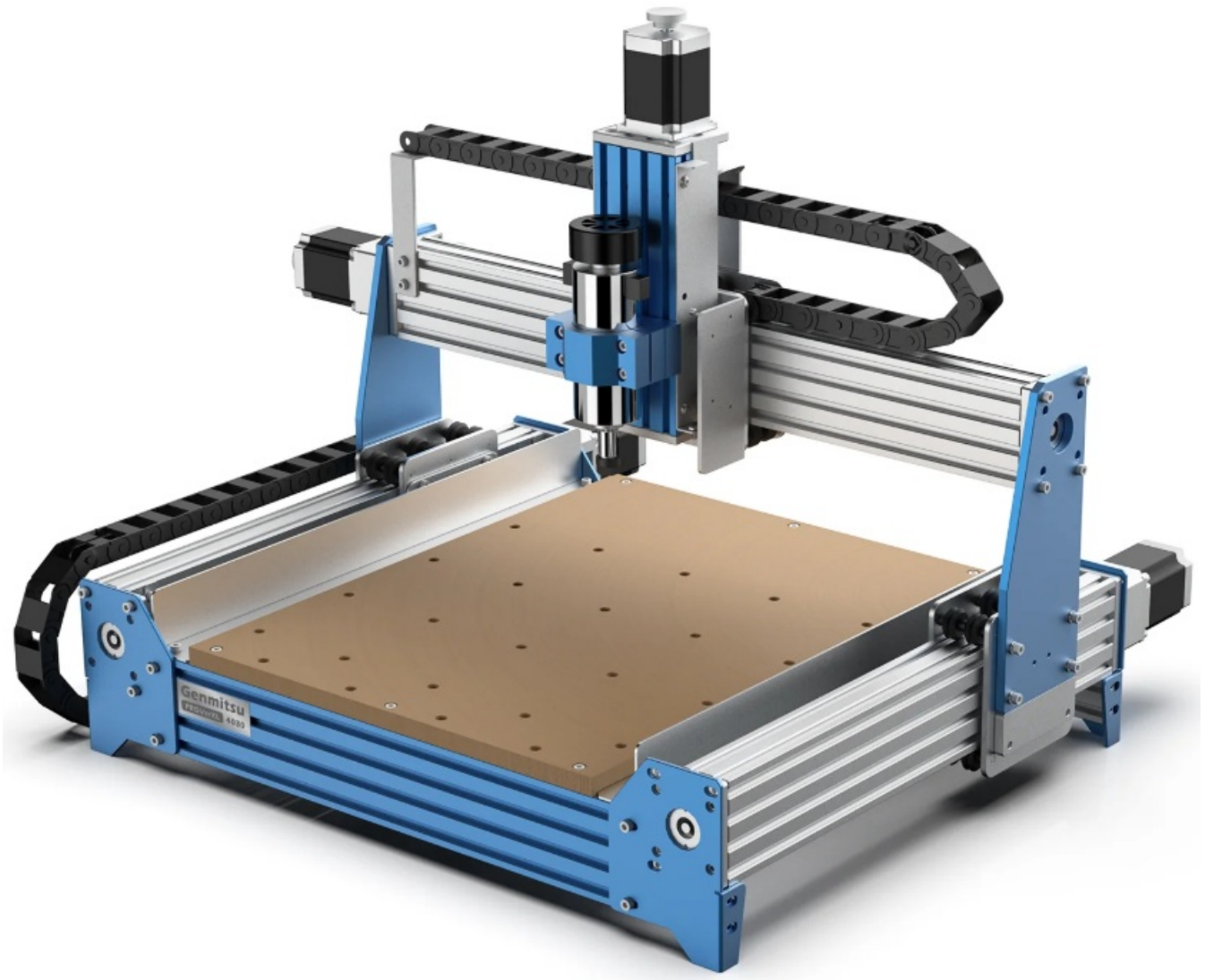
[Home](#) » [Genmitsu](#) » Genmitsu 4030 V1 PROVerXL Spindle Set Instruction Manual 

Contents

- [1 Genmitsu 4030 V1 PROVerXL Spindle Set](#)
- [2 INTRODUCTION](#)
- [3 Disclaimer](#)
- [4 Specifications](#)
- [5 CONTACT](#)
- [6 Documents / Resources](#)
 - [6.1 References](#)
- [7 Related Posts](#)

GENMITSU

Genmitsu 4030 V1 PROVerXL Spindle Set



INTRODUCTION

Welcome

Thank you for purchasing the Genmitsu PROVerXL 4030 CNC Router from SainSmart.

Included in your package will be a USB Stick, you will find:

- PDF version of this manual
- Windows USB Driver
- GrblControl/Candle software for Windows
- Sample files

Please visit the SainSmart Online Resource Center to install drivers and software for your CNC.

<https://docs.sainsmart.com/proverxl-4030>



The driver and software can also be found on the included USB stick. For technical support, please email us at support@sainsmart.com. Help and support is also available from our Facebook group.



Disclaimer

Please be careful when using your CNC machine. This machine is an electrical device with moving parts and dangerous areas.

- Genmitsu CNC Machines are for Indoor Use Only.
- You must be 18 years or older to operate this machine unless supervised by a knowledgeable adult familiar with the machine.
- Wear the proper Personal Protection Equipment (Safety Glasses etc.).
- Always place the CNC Machine on a stable surface.
- The SainSmart Genmitsu CNC Machine is supplied with a Switchable Power Supply 230 VAC or 115VAC. Never use a different power supply; it may cause malfunctions or damage to the machine.
- The PROVERXL 4030 utilizes a high amp power supply. It is recommended that you do not plug the CNC Router into an extension cord, or power strip as it may damage the machine.
- Ensure the Emergency stop button is easily accessible at all times.
- Never disassemble the Power Supply or Electrical Components. This will VOID the warranty.
- DO NOT TOUCH the machine spindle, or place any body part near the working area when the machine is operating. Serious Injury may occur.
- DO NOT leave children unsupervised with the CNC Machine even when it's not operating. Injury may occur.
- DO NOT leave the machine unattended while it's operating.
- Ensure your CNC Machine is in a well-ventilated area. Some Materials may discharge smoke or fumes during operation.

Specifications

| | |
|------------------------------|--|
| Working Area | 400 x 300 x 110mm |
| Motor | NEMA23 |
| Input Voltage | 115V/230V |
| Input Current | 8.5A/115V; 4A/230V |
| Spindle Speed | 12000r/min |
| Spindle Power | DC24V 300W |
| Drive System | Leadscrew T10 |
| MDF Spoilboard Size | 300 x 400 mm |
| Firmware | GRBL 1.1 |
| Emergency Stop Switch | YES |
| Limit Switch | X, Y, Z |
| Speed Control Button | YES |
| C-Beam® Linear Rail | X, Y, Z |
| Machine Weight | 26kg |
| Package Weight | 30kg |
| Color | Blue & Aluminum White |
| Supported OS | Windows XP, Windows 7 32/64 bits, Windows 8, Windows 10, Linux, Mac OS |
| Software | Grbl control(Candle) |
| Frame Material | Aluminum |

Part 1 – Unboxing

Please make sure all the following parts are included. If you are missing any part or have any questions, please email us at support@sainsmart.com

Mechanical Parts List



1 X-Axis & Spindle
Z-Axis Assembly



2 Y-Axis Base Assembly



3 Spindle



4 Collet



5 (2) Dust Baffle



6 (4) NEMA 23
Stepper Motor



7 (4) Stepper
Motor Mount



8 Drag Chain
Mount



9 Drag Chain Mount



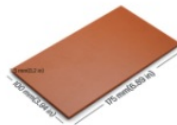
10 (2) Drag Chain Mount



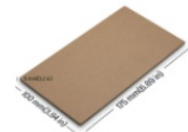
11 Cable Management



12 MDF Spoil Board



13 Bakelite Sheet
175 x 100 x 5mm



14 MDF Board
175 x 100 x 5mm

Electrical Parts List



15 PROVerXL
Control Center



16 USB Cable A-B



17 Power Cable (US)
1.2M

Tools/Accessories Parts List



18 (4) Material Clamp



19 Probe
Z-Height Mapping Probe



20 (10) Engraving Bit Kit
30 Degree, 0.2mm Cutting area,
3.175 Diameter



21 (10) Nano Blue Coat Bits
3.175mm Shank, Cutting Edge
Diameter: 0.8-3.0mm



22 (5) Allen Wrench
2.0mm, 2.5mm, 3.0mm,
4.0mm, 5.0mm



23 Wrench



24 Nylon Braided Wrap
340mm



25 User Manual



26 USB Stick

Screws/Other Parts List



27 (2) M5 T- Nut



28 (4) M5 x 8mm
Socket Cap Screw



29 (14) M5 x 16mm
Socket Cap Screw



30 (6) M5 x 20mm
Socket Cap Screw



31 (8) M5 x 50mm
Socket Cap Screw



32 (4) M5 x 55mm
Socket Cap Screw



33 (2) M4 x 6mm
Socket Cap Screw



34 (2) M4 x 8mm
Socket Cap Screw



35 (3) Coupler



36 (10) 5mm
Spring Washer



37 (10) 5mm
Flat Washer

Optional Accessories (Not Included)

Consider following optional upgrades or accessories to make your CNC experience better! You can find them on www.sainsmart.com. Save 10% with discount code PROVerXL



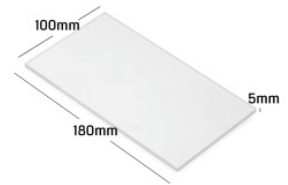
Router Bits Holder
Storage Case



CNC Router Bits
Essential Kit



Resin Board for CNC
Engraving, 2-Pack



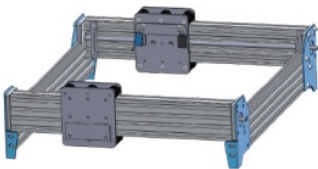
Acrylic Sheet for CNC,
180 x 100 x 5mm, 4-Pcs



Scan QR codes to learn more

Part 2 – Mechanical installation

Preparing your Base Assembly



2 Y-Axis Base Assembly



35 (2) Coupler



7 (2) Stepper
Motor Mount



6 (2) NEMA 23
Stepper Motor

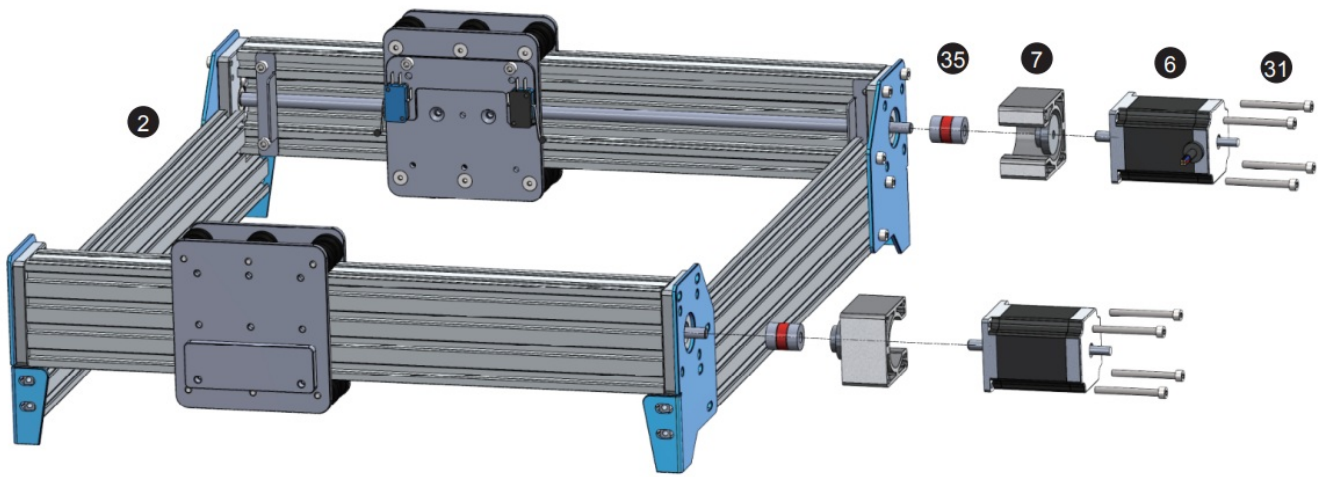


31 (8) M5 x 50mm
Socket Cap Screw

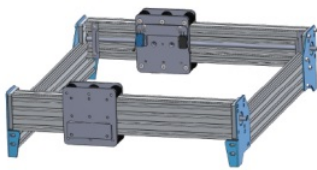


22 Allen Wrench

- **Step 1:** Inspect your Base Assembly after removing it from the packaging. Before starting assembly, verify the base is square by using a 90-degree straight edge, as shipping may have caused things to shift.
- **Step 2:** Install the flexible coupler onto each Y-Axis leadscrew. Loosen the small set screw to ensure the Lead Screw will completely seat inside.
- **Step 3:** Tighten (2) M6 x 16mm screws to secure the lead screw mount.
- **Step 4:** Next comes the Motor Mounts & Stepper Motor. Lay the Stepper Mount on your flat surface, positioning it so the open side will not face down when installed. Place the NEMA-23 Motor onto the mount aligning the screw holes. Insert the M5 x 50mm screws.
- **Step 5:** Holding the Mount & Motor together with the screws, install the assembly to base as shown in the diagram.



Finishing your Base Assembly



2 Y-Axis Base Assembly



29 (4) M5 x 16mm
Socket Cap Screw



30 (6) M5 x 20mm
Socket Cap Screw



12 MDF Spoil board

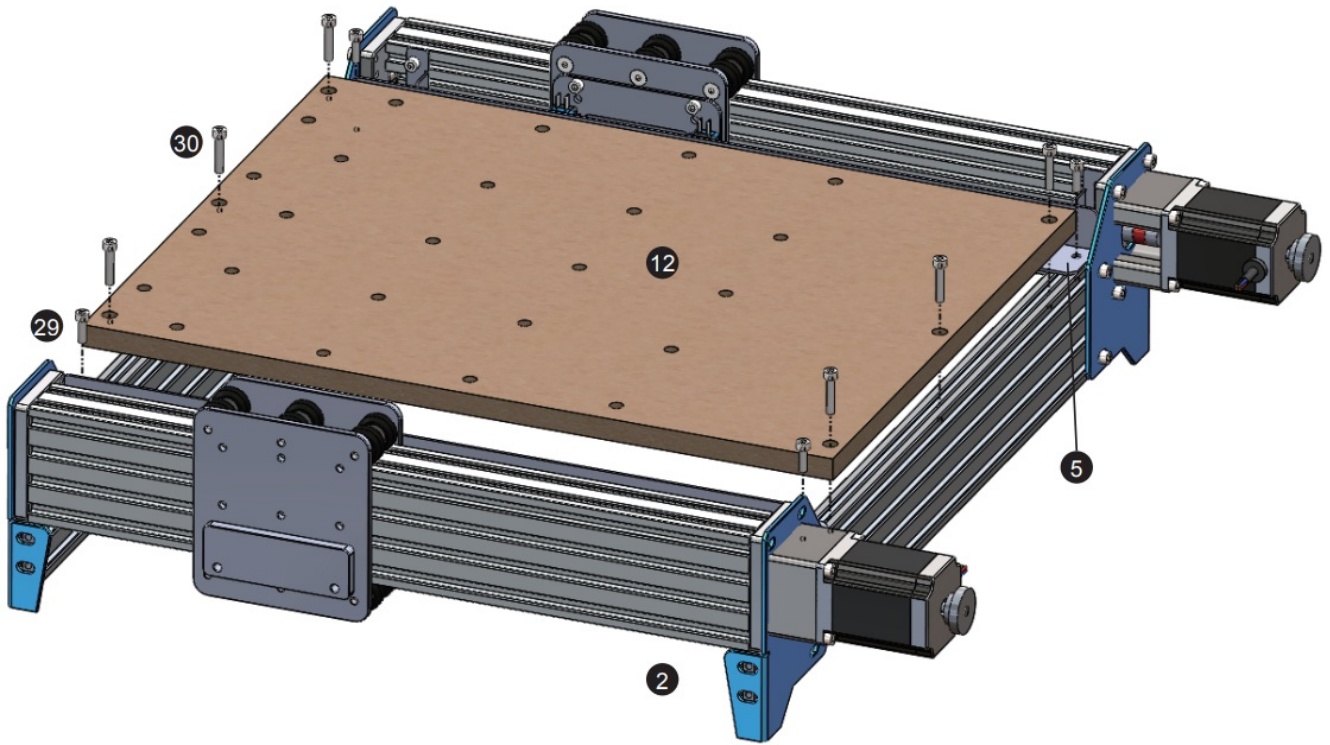


5 (2) Dust Baffle

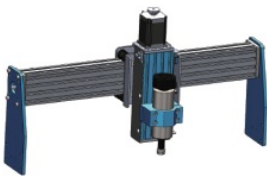


22 Allen Wrench

- **Step 1:** Position the MDF Spoilboard on the PROVerXL 4030 Base and align with the screw holes at the front and back of the machine. Be sure the board is right side up (Threaded Inserts should be towards the bottom, if you install it in reverse the mounting screws will protrude from the top of the spoil board). Tighten with M5 x 20mm Screws.
- **Step 2:** Align each Dust Baffle to the side of the spoil board, align with the screw holes and tighten down with the M5 x 16mm screws.



Preparing your X-Axis Gantry



1 X-Axis & Spindle
Z-Axis Assembly



35 Coupler



7 Stepper Motor Mount



6 (2) NEMA 23
Stepper Motor

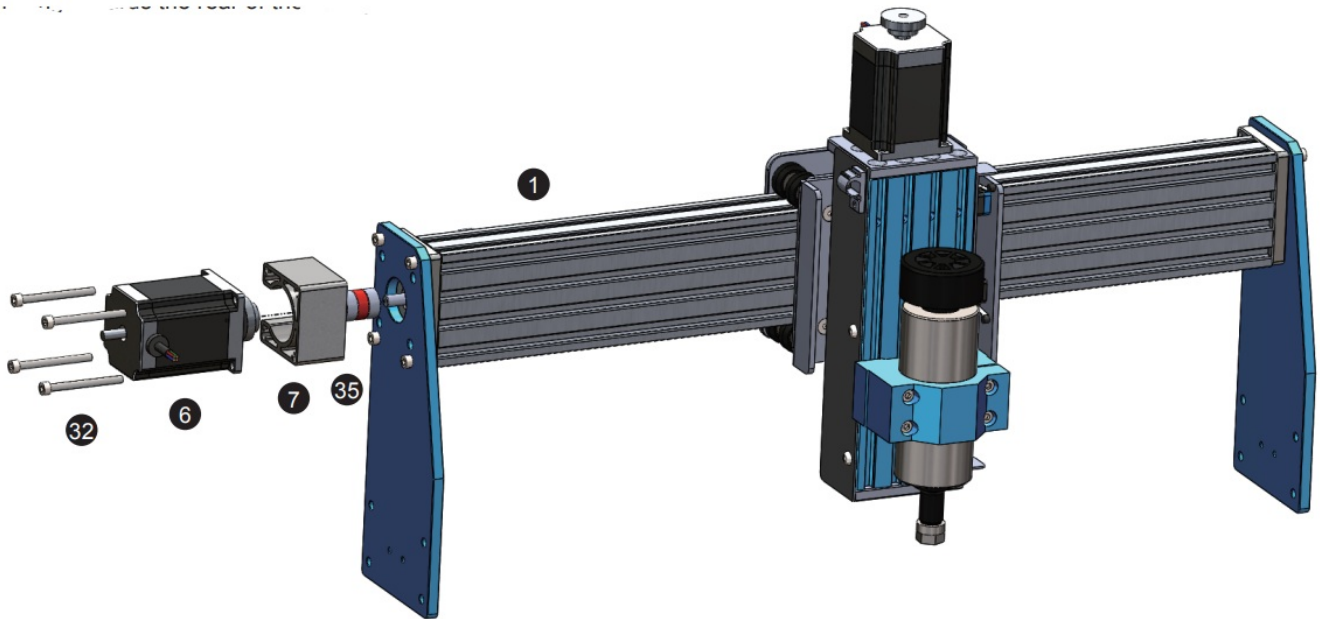


32 (4) M5 x 55mm
Socket Cap Screw



22 Allen Wrench

- **Step 1:** Install the flexible coupler to the X-Axis Leadscrew. Be sure to loosen the grub screws to ensure the shaft full seats inside.
- **Step 2:** Just like the Base preparation. Prep your Stepper Motor Mount + NEMA 23 Motor and 4 socket cap screws and remember to position the mount with the opening facing towards the rear of the gantry.
- **Step 3:** Mount the assembly to the X-Axis. Tighten the grub screws on the coupler. Manually twist the wheel on the Stepper Motor to verify smooth movement of the Gantry on the X-Axis.



Finishing your X-Axis Gantry



1 X-Axis & Spindle
Z-Axis Assembly



9 Drag Chain Mount

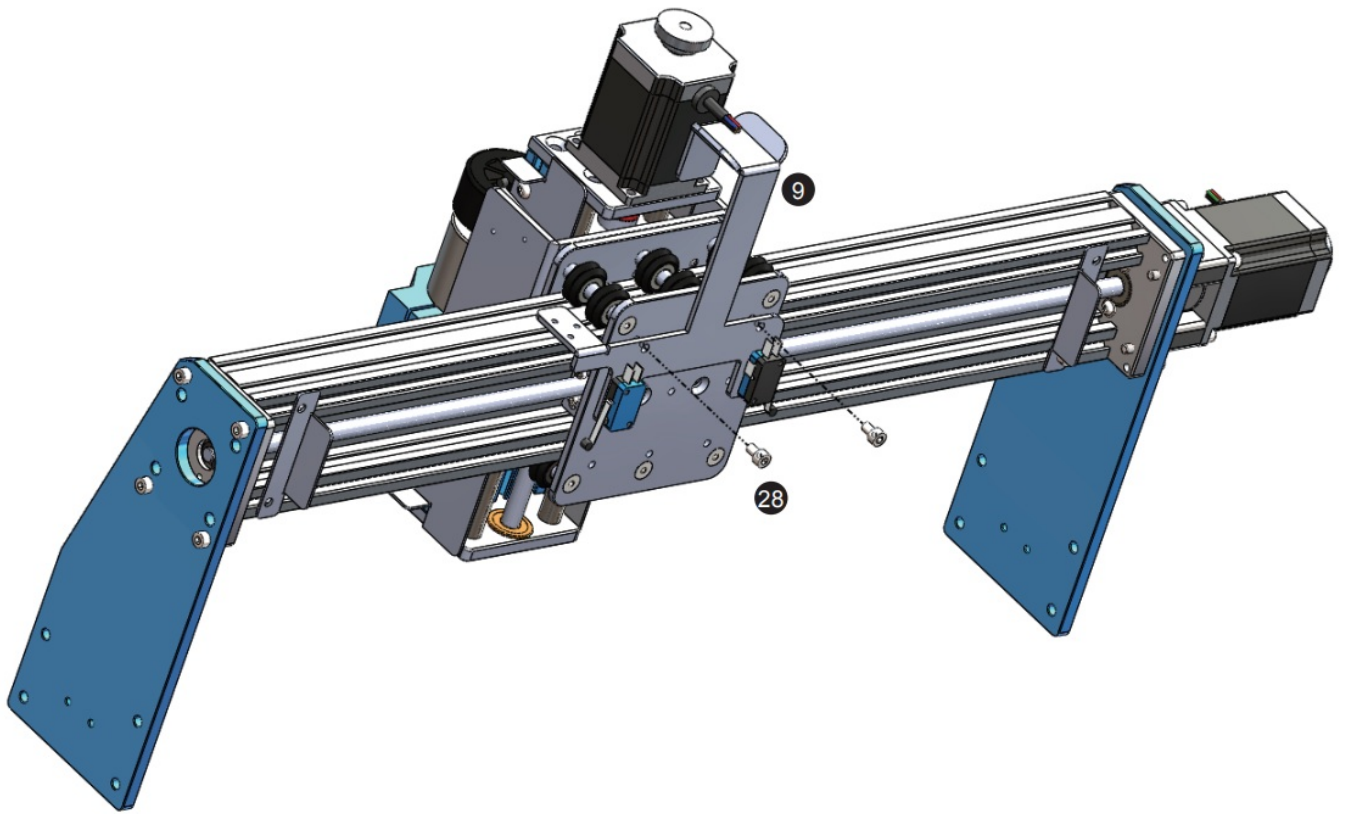


28 (2) M5 x 8mm
Socket Cap Screw



22 Allen Wrench

Step 1: Position the X-Axis Limiter to the rear of the Spindle Carriage as shown in the diagram. Install the bracket and tighten the screws.



Finishing Frame Assembly



36 (8) 5mm
Spring Washer



37 (8) 5mm
Flat Washer

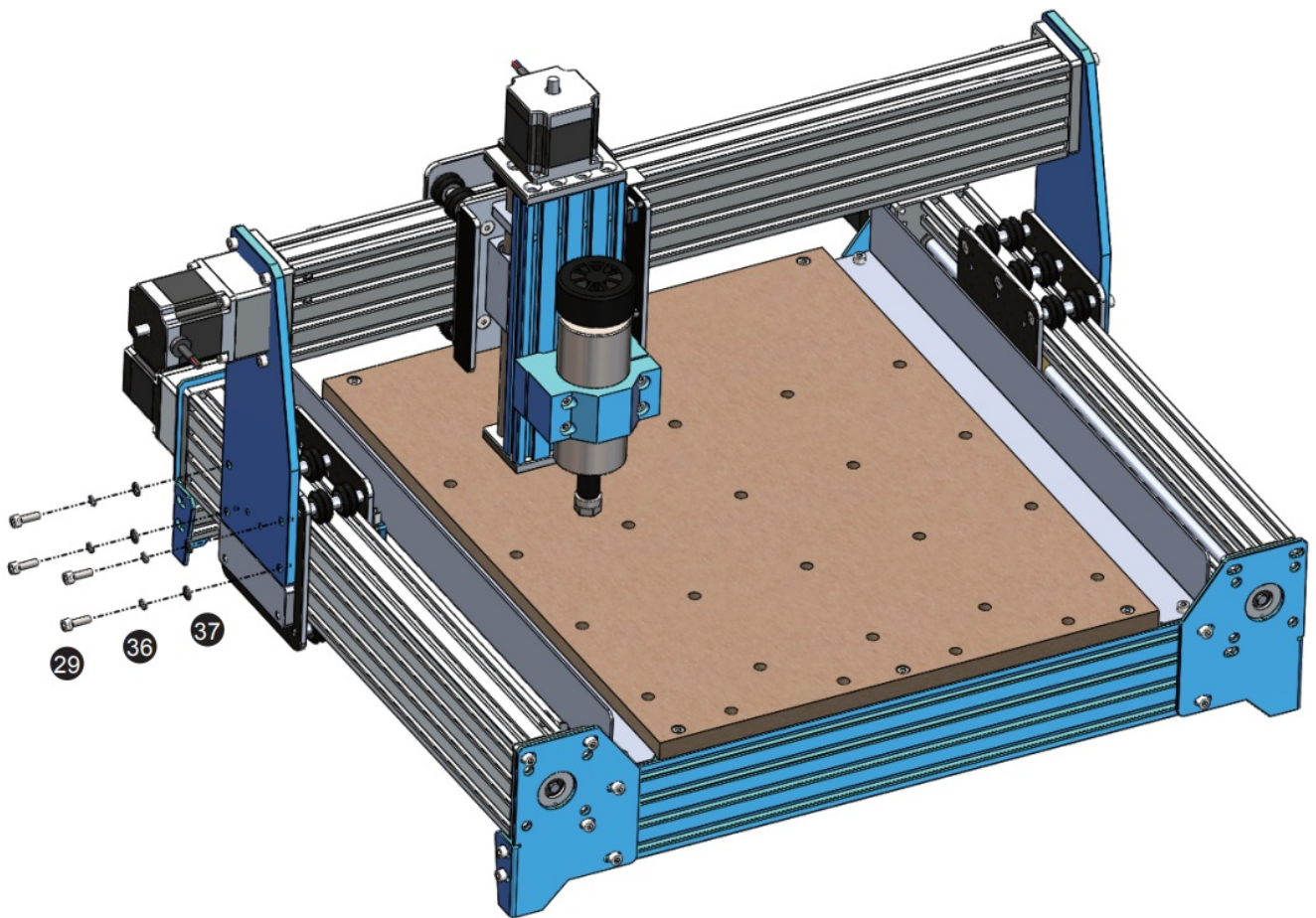


29 (8) M5 x 16mm
Socket Cap Screw



22 Allen Wrench

- **Step 1:** Position the X-Axis gantry onto the Y-Axis carriage mounts as shown in the diagram. Each carriage has an acrylic plate that will hold the gantry at the appropriate height. Install the gantry using a 5mm washer, 5mm spring washer then M5 x 16mm screw as shown in the diagram.
- **Step 2:** Secure the opposite side to complete the installation.
- **Step 3:** Rotate both wheels on your Y-Axis stepper motors to ensure smooth movement of the X-Axis Gantry along the Y-Axis.



Installing the X-Axis Drag Chain



8 Drag Chain Mount



27 (2) T- Nut M5



22 Allen Wrench



28 (2) M5 x 8mm
Socket Cap Screw

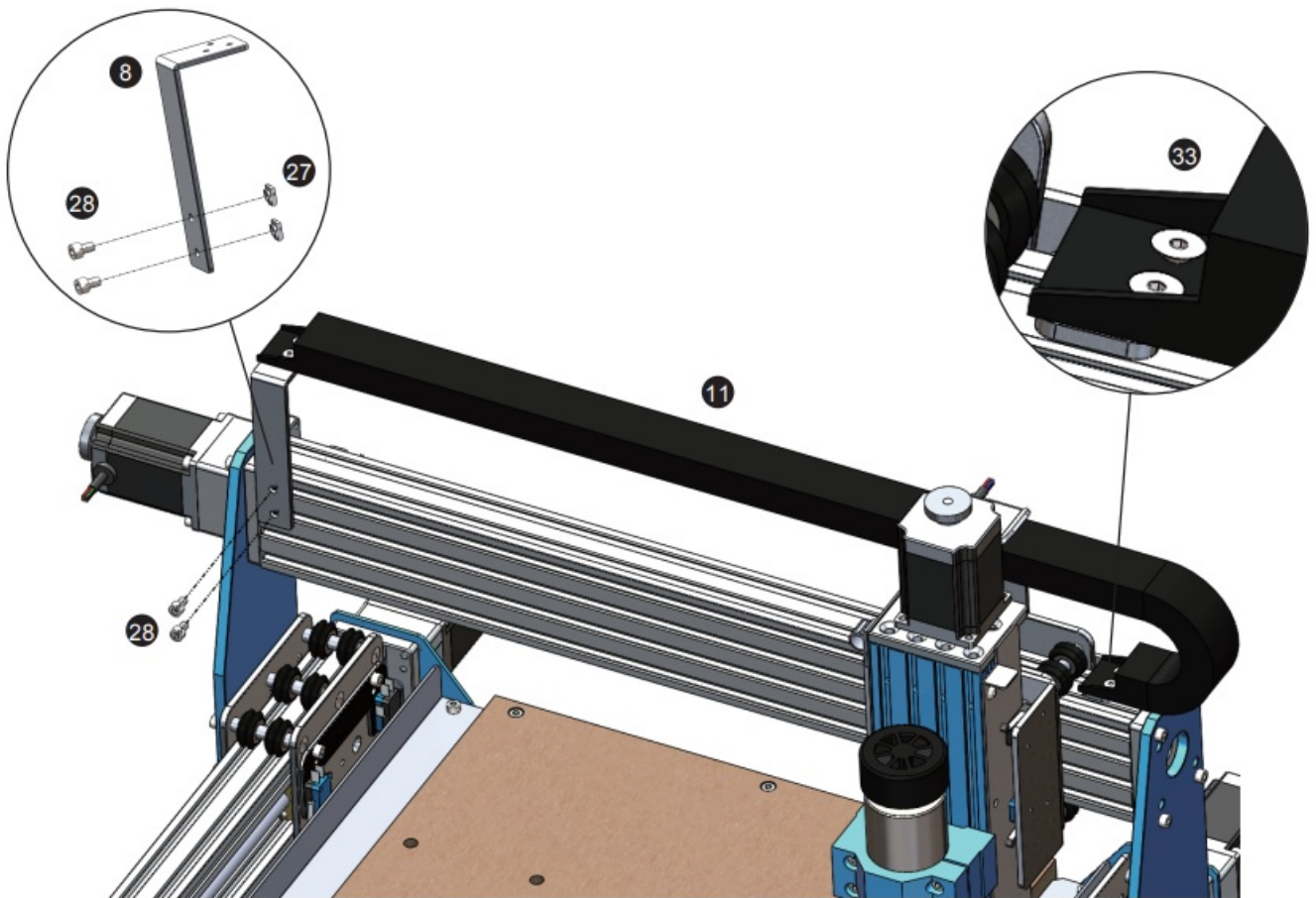


33 (5) M4 x 6mm
Socket Cap Screw

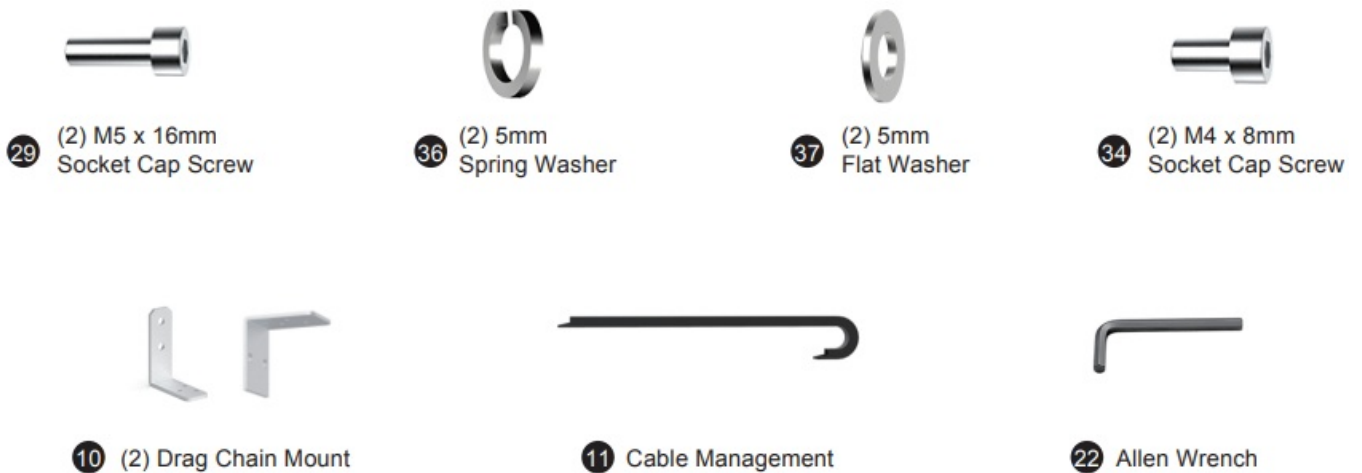


11 Cable Management
Drag Chain

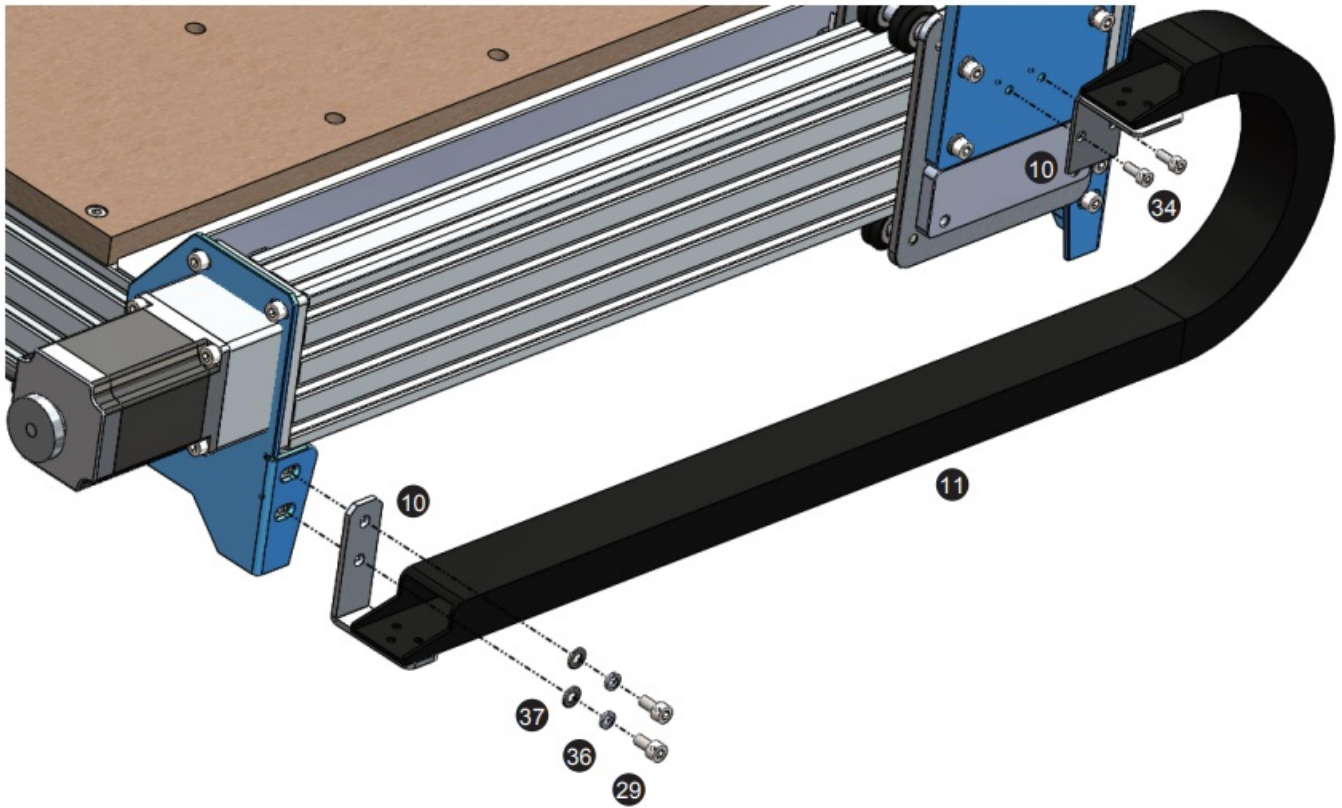
- **Step 1:** Per the diagram you will install the X-Axis drag chain mount. Align the T-Slot nuts with the bracket (the screws and nuts will be positioned on the top 2 channels of the C-Beam.) Secure the bracket with the screws.
- **Step 2:** Position the Drag Chain as shown in the diagram. Start with securing the side closest to the Spindle Gantry and secure with (3) M4 x 6mm screws.
- **Step 3:** Run the Drag Chain underneath the X-Axis limiter as shown in the diagram and secure to the Drag Chain Mount with your M4 x 6mm screws.



Installing the Y-Axis Drag Chain



- **Step 1:** Position the narrow drag chain mount to the rear of the machine as shown in the diagram. Attach the bracket with (2) M6 x 10mm socket cap screws.
- **Step 2:** Install the bracket to the carriage as shown in the diagram using (2) M4 x 8mm socket cap screws.
- **Step 3:** Position the drag chain per the diagram using (6) M4 x 6mm screws. (The side with the Compression DIN Connector for the spindle goes to the Control Box.) While mounting the drag chain take care not to damage any of the cables or connectors.



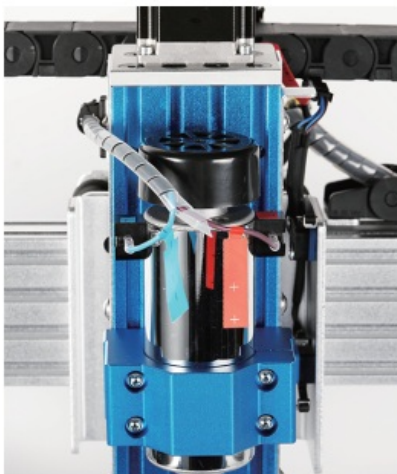
Congratulations! Now your PROVerXL machine body is fully assembled!

Part 3 – Wiring

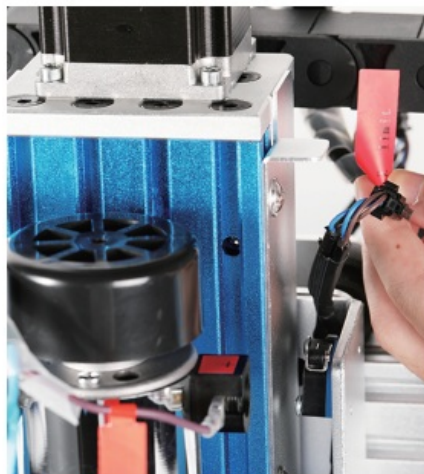
Wiring Your Electronics

- **Step 1:** Start with the Spindle and X-Axis Carriage. Using the labeled cable ends you need to connect the Z-Axis Limit Switches to the Cable whip and wire the Spindle (there is no requirement for which color goes onto which side of the spindle).
- **Step 2:** Connect your Z-Axis Stepper Motor

Spindle



Z-Axis Limit Switches

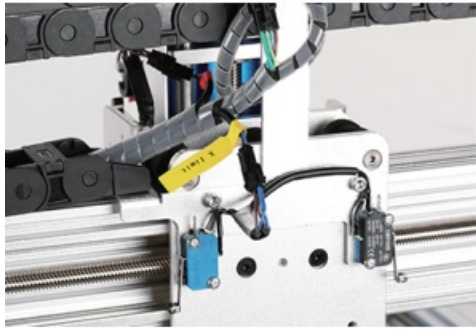


Z-Axis Stepper Motor



- **Step 3:** Connect your Limit Switches

X-Axis Limit Switches



Y-Axis Limit Switches



- **Step 4:** Wire the Y-Axis Stepper Motors. Find the longer Y-Axis Motor cable (Y2) and run that to the left side while reserving the shorter cable marked X for the X-Axis Motor and finally the medium length cable (Y1) for the right-side Y-Axis motor.

Y2 to Left Motor and Y1 to Right Motor



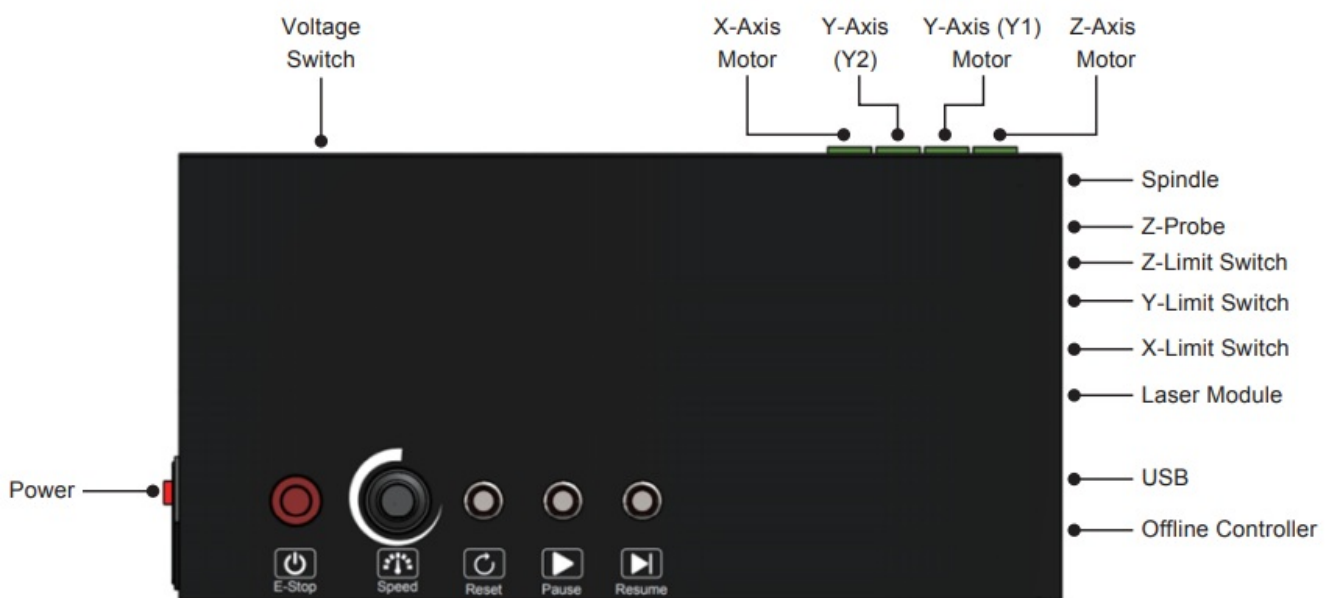
Cables to Control Box side



X Axis



- **Step 5:** Follow the Wiring Diagram Below in order to connect all the wires from the Cable Whip (Looks like central image above).



Check your voltage selection before powering on.

Label Description

| Mark | Description | Mark | Description |
|---------------------------|--|------------------|------------------------|
| USB | USB interface | -LASER | Laser module interface |
| Power | AC Power Input | Speed | Spindle RPM Speed |
| ON | Power ON | Unlock | Unlock Motors |
| OFF | Power OFF | Spindle + | Positive |
| Offline controller | Offline controller (Note: Only connect to our offline controller) | Spindle – | Negative |
| | | X | X Axis motor interface |
| ESTOP | Emergency stop switch interface | Y | Y Axis motor interface |
| Z-PROBE | Z Zero Tool interface | Z | Z Axis motor interface |
| X | X limit switch | Reset | Reset Mainboard |
| Y | Y limit switch | Pause | Pause Operations |
| Z | Z limit switch | | |

Final Checks

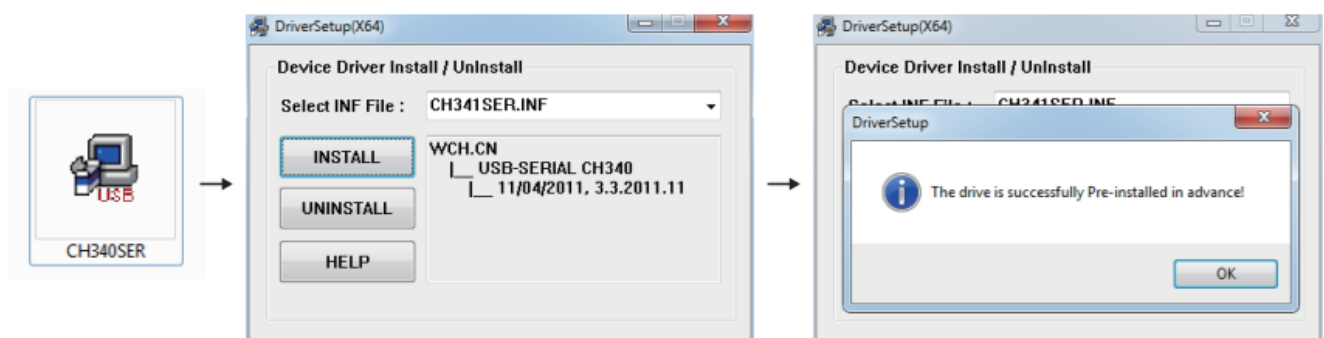
| | |
|-------------------------------------|---|
| Lubricate the Axes | <p>The Axis leadscrews are lubricated at the factory; however, we recommend you inspect drive screws and reapply if needed. It is suggested you use a “Dry” PTFE based lubricant or similar product (not included) to help prevent debris and dust from sticking to the rods or leadscrews.</p> <p>Please Note: Recommended normal maintenance includes cleaning of the threaded rods and lubricating as needed.</p> |
| Check Cables and Connections | <p>Ensure cables connecting the Z Axis and Spindle are not obstructed and mill move freely along the Z and</p> <p>X axis. Check limit switch connections and all motors.</p> <p>Verify the PROVerXL Control Box voltage switch is on the proper voltage for your region, default setting is 110V.</p> |
| Emergency Stop Button | <p>Before powering on your machine ensure the Emergency Stop Button is in the released position by turning</p> <p>the button in the direction of the arrows and letting it spring out.</p> |

Part 4 – Software Setup

Driver installation

1. Driver Installation

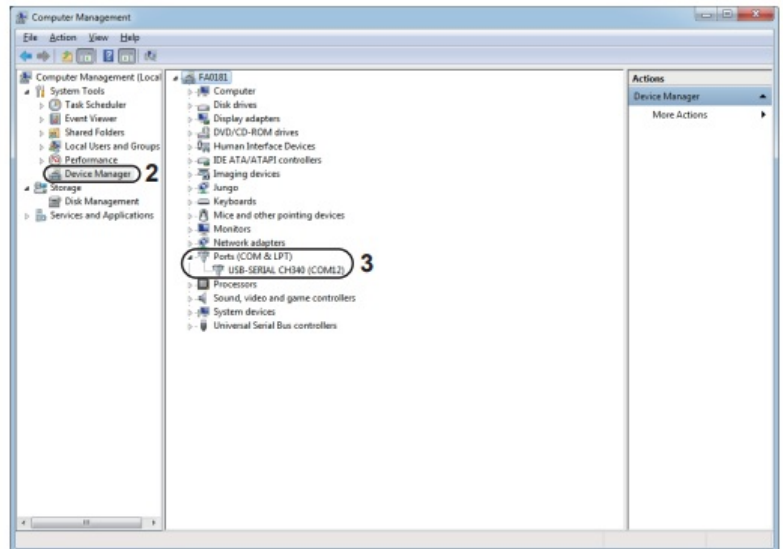
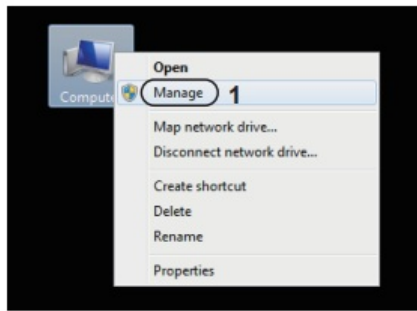
Install the driver (software Driver CH340SER.exe)



2. To Determine your Machine's COM port:

- **Windows XP:** Right click on “My Computer”, select “Manage”, select “Device Manager”.
- **Windows 7:** Click “Start” Right click “Computer” Select “Manage” Select “Device Manager” from left pane.
- In the tree, expand “Ports (COM & LPT)”
- Your machine will be the USB Serial Port (COMX), where the “X” represents the COM number, for example COM12.

- If there are multiple USB serial ports, right click each one and check the manufacturer, the machine will be “CH340”.



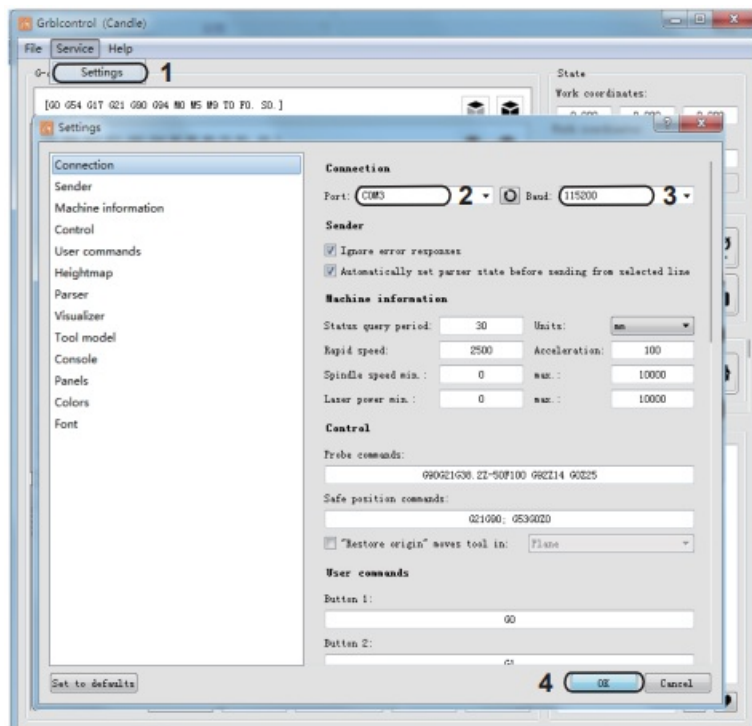
3. Grblcontrol (Candle) Connecting to the Controller

First time use will require you setup the appropriate COM PORT and Baud rate.

Step 1: Software should automatically select the port number.

Step 2: If it does not recognize automatically select the “Baud” drop down menu and select 115200.

Step 3: Click “OK” to save.

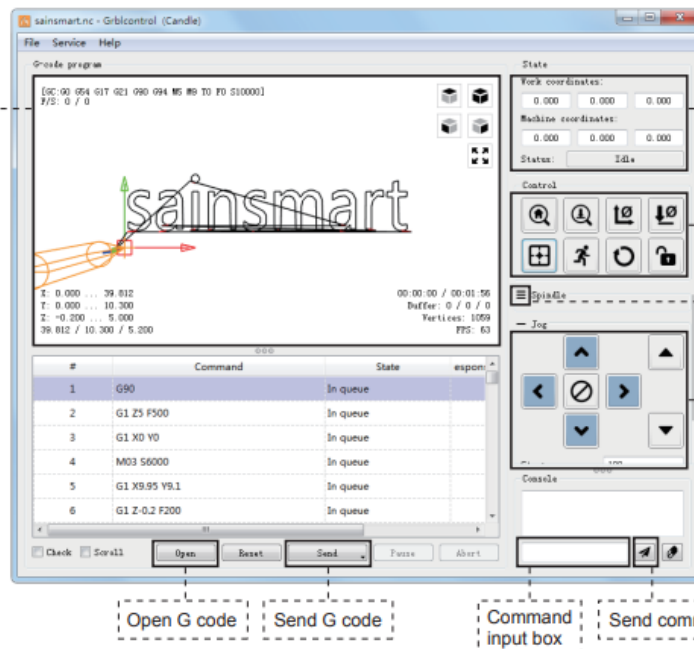


Part 5 – Test Project

Grblcontrol (Candle)

3D preview interface, hold the left mouse button, can rotate Angle, scroll the mouse wheel, can be enlarged, or reduced.

If you cannot see anything, you need to change to a computer with support for OpenGL2.0 graphics cards.

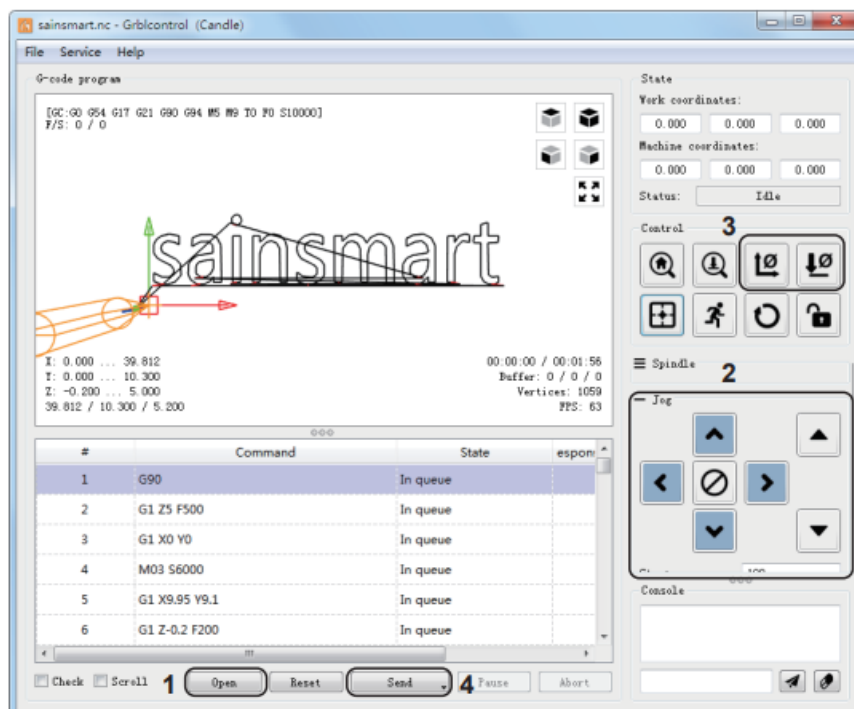


Run G code for processing

1. Click open , Select the G code to run.
2. Click on the manual operation panel, move the spindle to the starting. point of the engraving, so that the tool and the workpiece just touch.
3. Click ZeroXY Zero Z Clear the XYZ axis coordinate.
4. Click Send running G code.

About firmware parameters

The parameters of the control board have been configured according to PROVerXL 4030.




Part 6 – Z Probe Setup

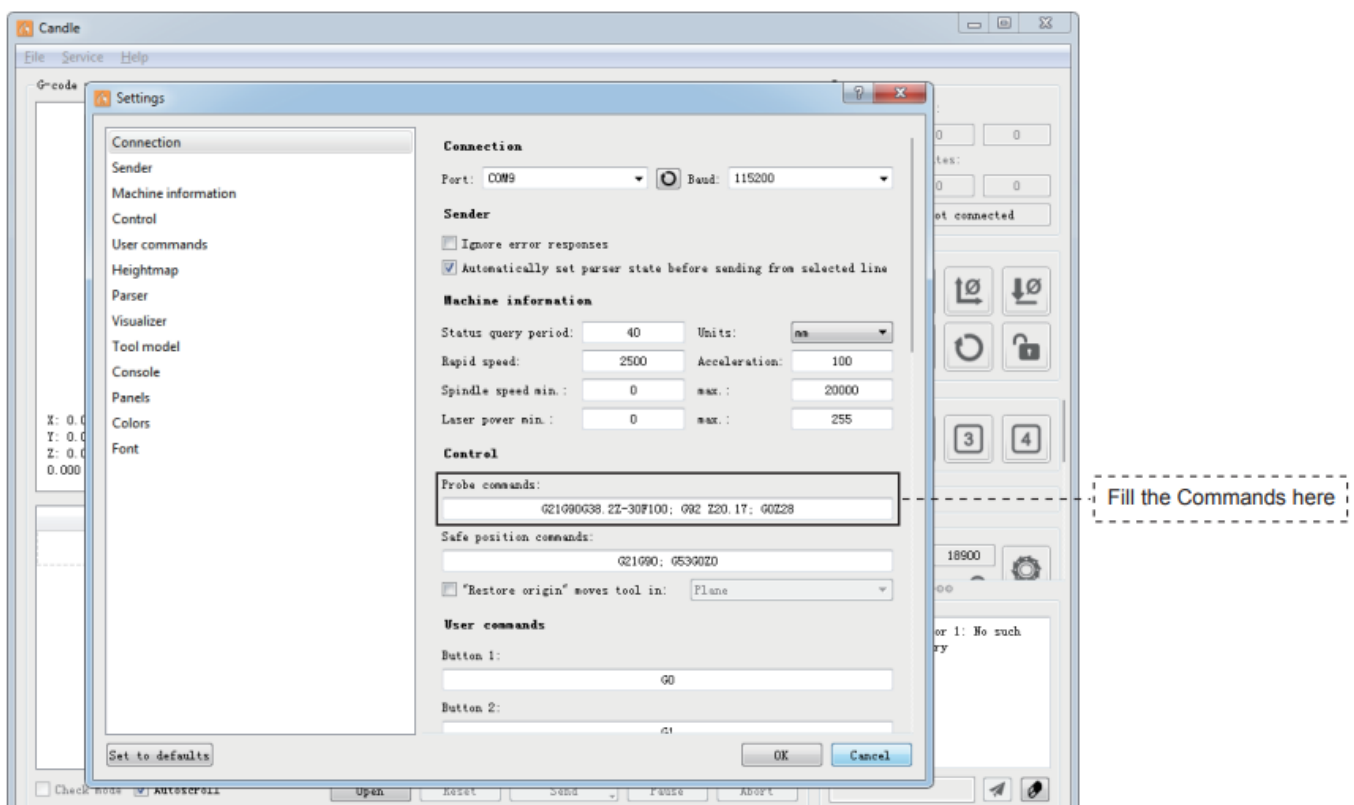
Probe function introduction

Grblcontrol (Candle) Probe operating instructions

Step 1: Probe commands editing Z14 is the height of the tool setting block, which requires actual measurement, and Z25 is the height of the tool lifting, which can be configured as required

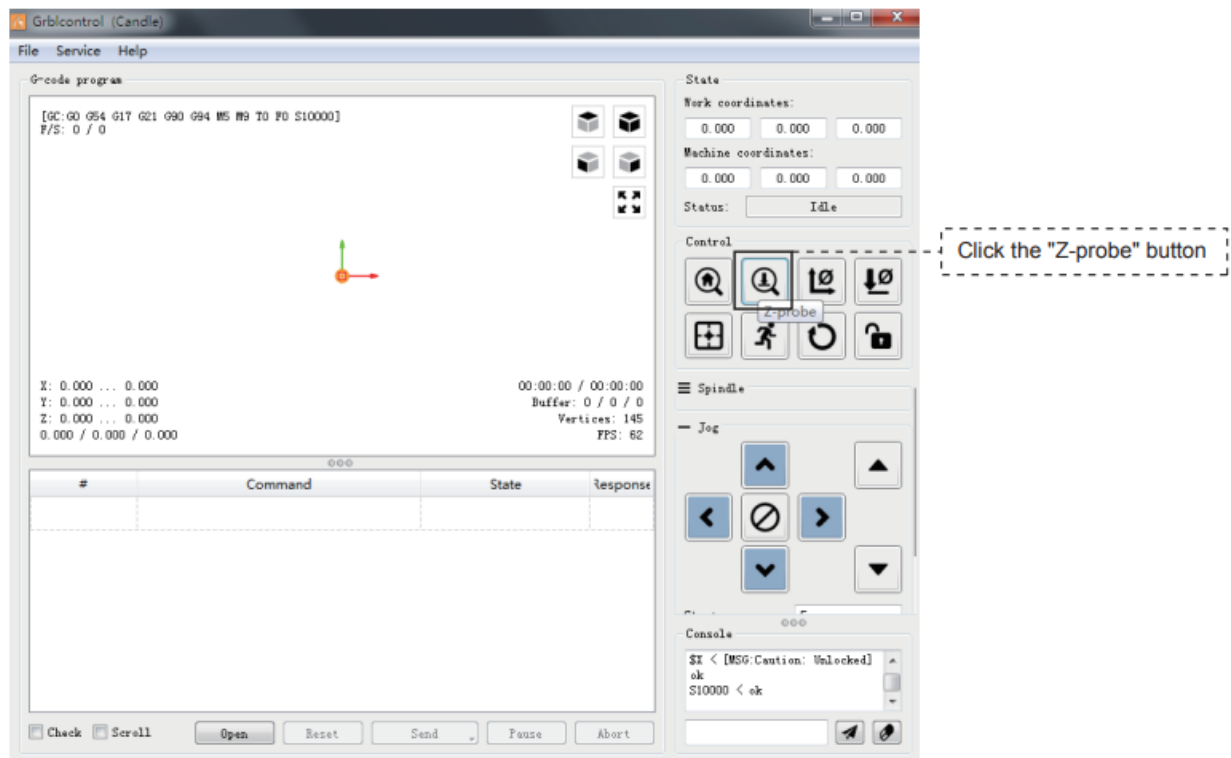
| Probe G code | After editing | Probe Tool height |
|--|---|--|
| G90G21G38.2Z-50F100 G92 Z14 G0 Z25 | G90G21G38.2Z-50F100 G92 Z20.17 G0 Z28 |  |

Step 2: Probe commands filled in Grblcontrol (Candle)



Step 3: Connect the probe tool to the controller probe interface.

Step 4: Click the “Z-probe” button, Z-axis automatic tool to zero.



Copyright © 2020 by SainSmart

All rights reserved. This manual or any portion thereof may not be reproduced or used in any manner whatsoever without the written permission of the publisher, except for the use of brief quotations embodied in critical reviews and certain other noncommercial uses permitted by copyright law. For permission requests, write to the publisher.

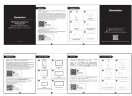
CONTACT

www.sainsmart.com

support@sainsmart.com

Vastmind LLC, 5892 Losee Rd Ste. 132, N. Las Vegas, NV 89081

Documents / Resources

| | |
|---|--|
|  | <p>Genmitsu 4030 V1 PROVerXL Spindle Set [pdf] Instruction Manual 4030 V1, 4030 V2, 4030 V1 PROVerXL Spindle Set, 4030 V1, PROVerXL Spindle Set, Spindle Set</p> |
|---|--|

References

- [User Manual](#)

[Manuals+](#). [Privacy Policy](#)

This website is an independent publication and is neither affiliated with nor endorsed by any of the trademark owners. The "Bluetooth®" word mark and logos are registered trademarks owned by Bluetooth SIG, Inc. The "Wi-Fi®" word mark and logos are registered trademarks owned by the Wi-Fi Alliance. Any use of these marks on this website does not imply any affiliation with or endorsement.