



Genmitsu 1010 XY-Axis Extension kit for PROVerXL 4030 Installation Guide

[Home](#) » [Genmitsu](#) » Genmitsu 1010 XY-Axis Extension kit for PROVerXL 4030 Installation Guide 

Contents

- [1 Genmitsu 1010 XY-Axis Extension kit for PROVerXL 4030](#)
- [2 Package List](#)
- [3 Before Installation](#)
- [4 Installation Steps](#)
 - [4.1 Installation Completed](#)
- [5 Parameter Setting](#)
- [6 Documents / Resources](#)
 - [6.1 References](#)
- [7 Related Posts](#)

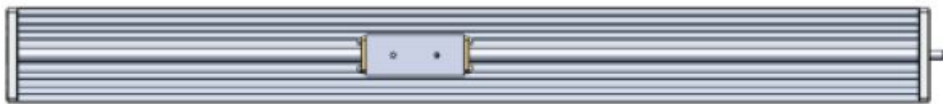
Genmitsu

Genmitsu 1010 XY-Axis Extension kit for PROVerXL 4030

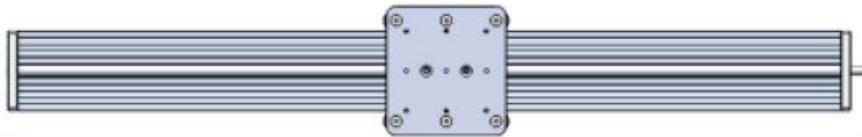


Package List

1. X-axis Aluminum Extrusion



2. 2×Y-axis Aluminum Extrusion



3. 2×Front/Back Plate



4. Cable Management (Drag Chain+Wiring)



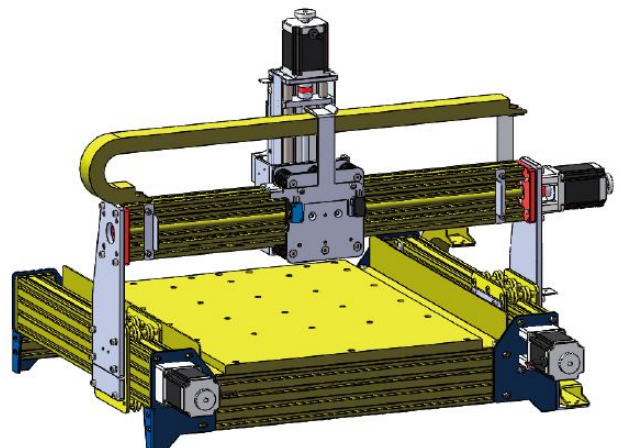
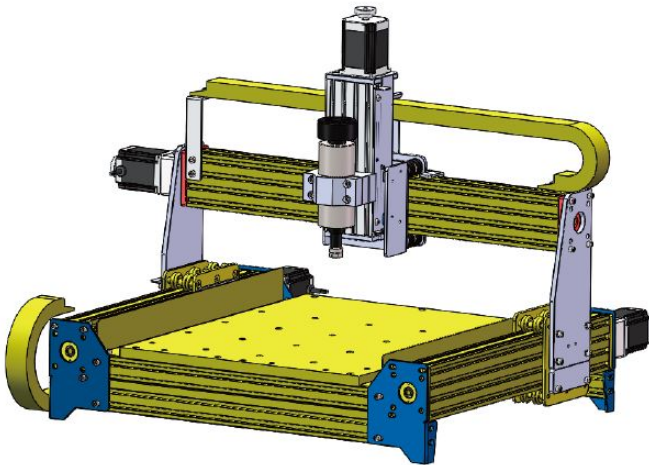
5. 2×M5*20 Screws
6. 2×M5*14 Screws
7. 2mm Hexagon Wrench
8. 2.5mm Hexagon Wrench
9. 3mm Hexagon Wrench

10. 4mm Hexagon Wrench

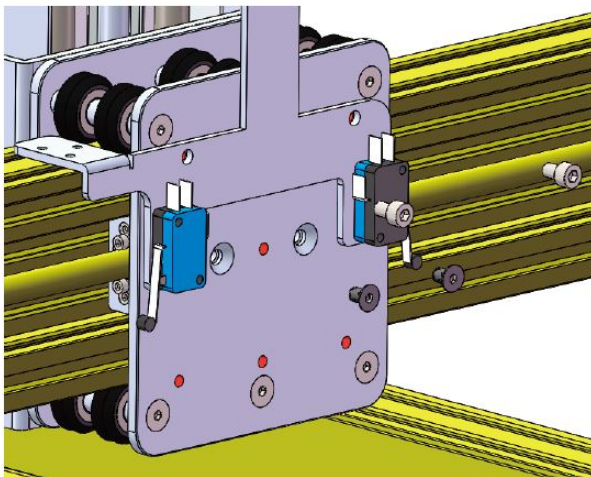
11. Installation Guide

Before Installation

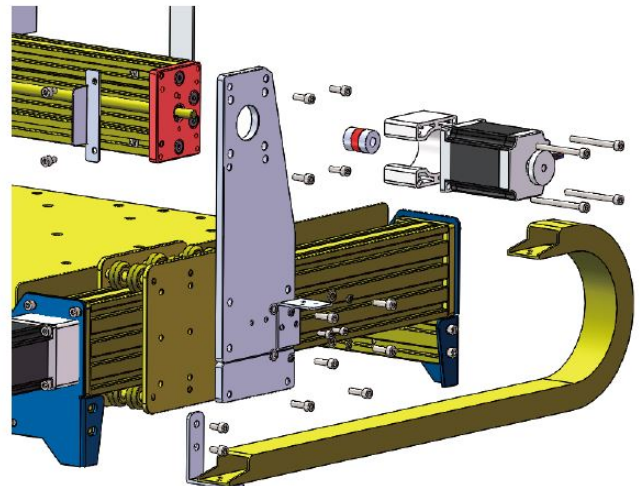
Uninstall the parts that are marked as Yellow.



- Step 1: Unplug all wiring and uninstall both cable chains.
- Step 2: Uninstall X limit switch assembly.

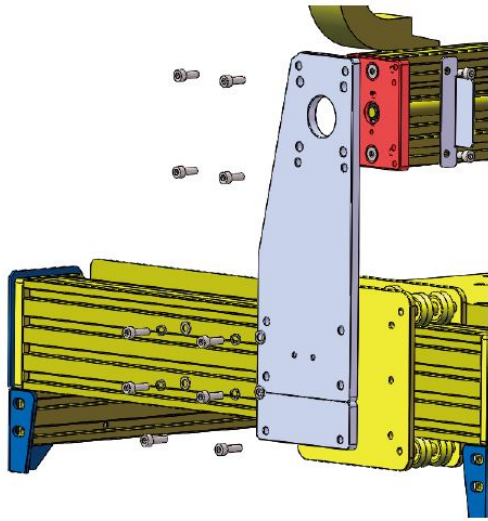


Step 1

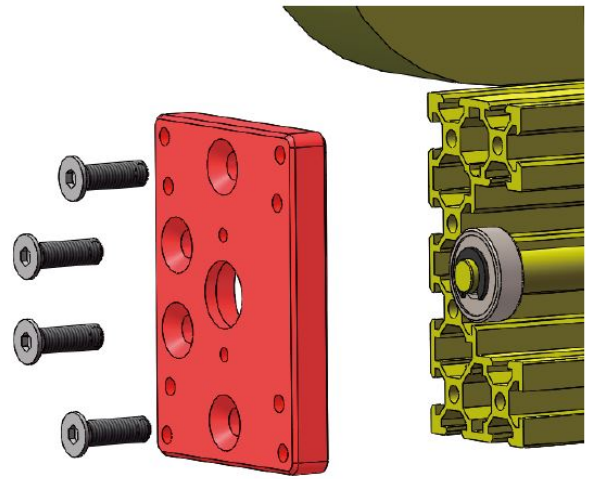


Step 2

- Step 3: Uninstall the X-Axis stepper motor and stepper motor mount, as well as all parts in blue.
- Step 4: Uninstall the red side plate from one side of the X-axis and slide the X-Z assembly off of the X-axis.

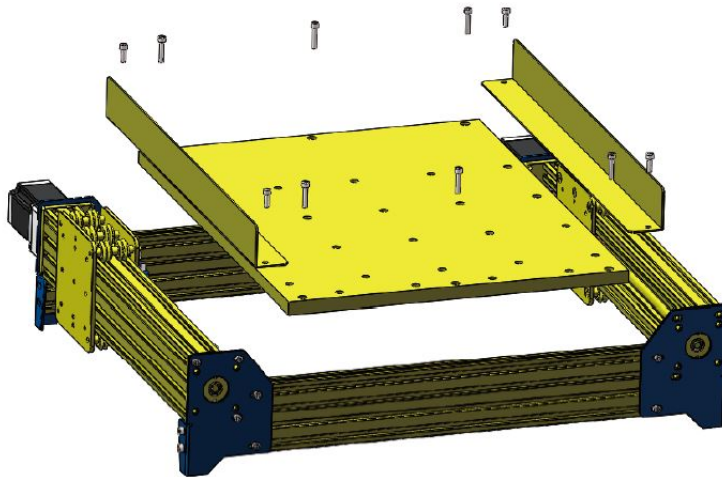


Step 3

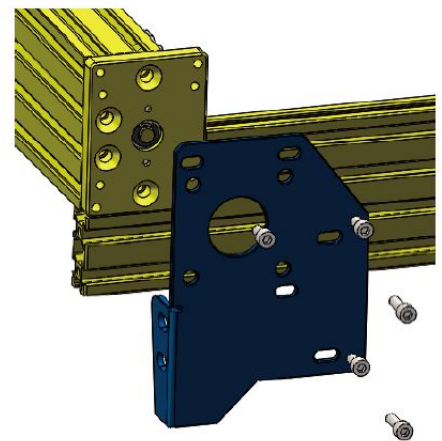


Step 4

- Step 5: Remove the Spoilboard and the Dust Baffle.
- Step 6: Remove 2 blue corner brackets of the CNC Base Frame.

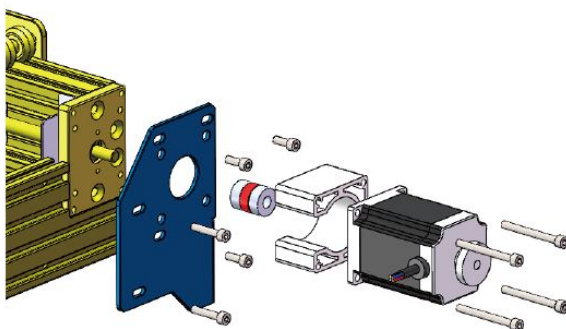


Step 5

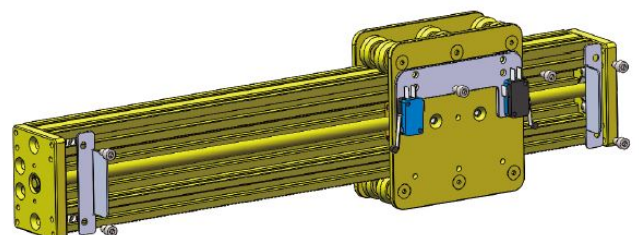


Step 6

- Step 7: Remove the Y-axis Stepper Motor and 2 blue corner brackets of the CNC Base Frame.
- Step 8: Remove the Y-Axis Limit Switch Assembly and Limit Block.



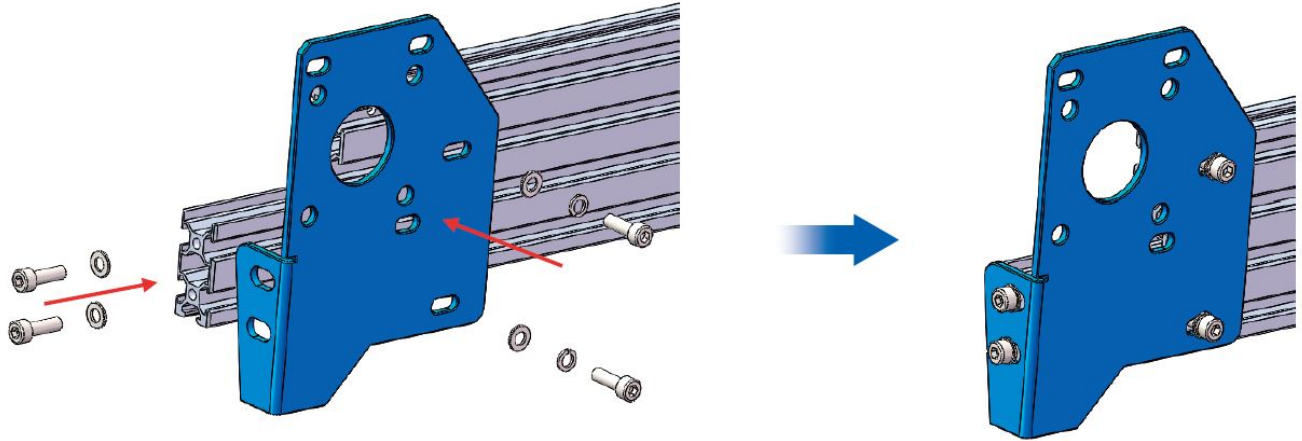
Step 7



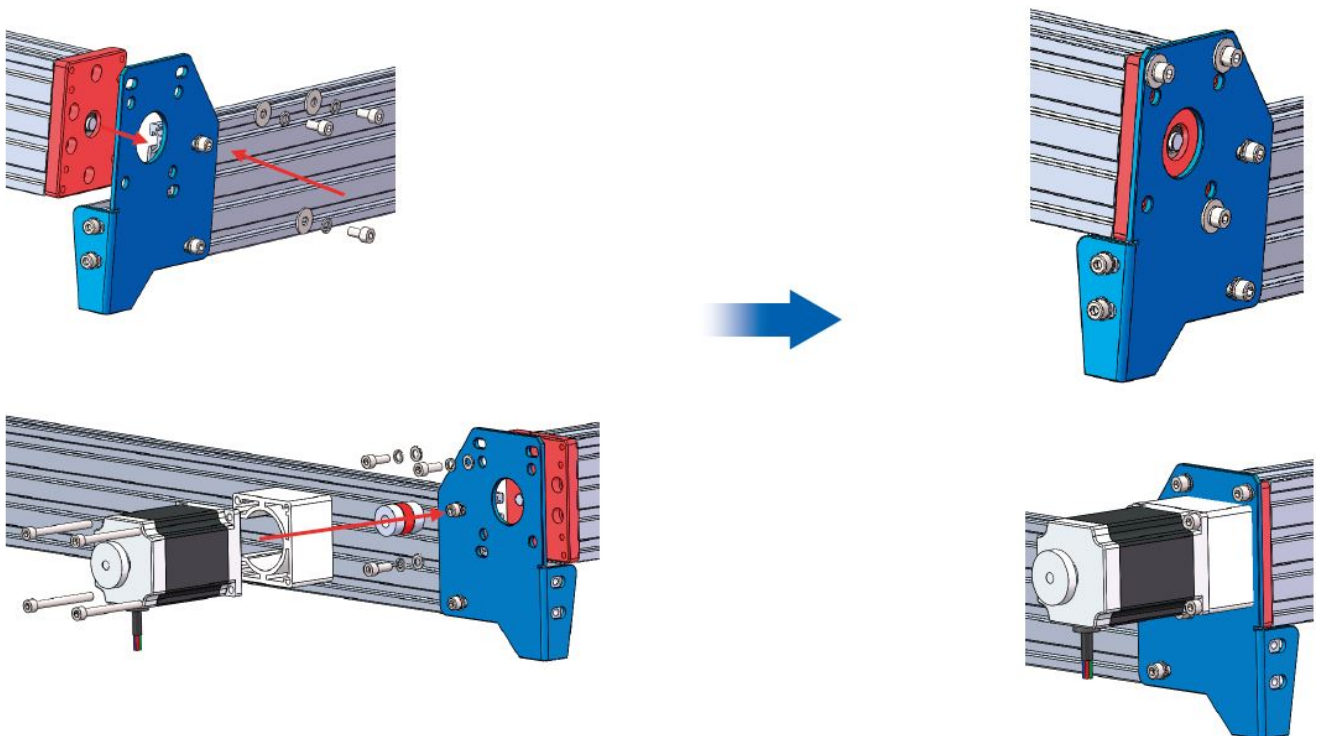
Step 8

Installation Steps

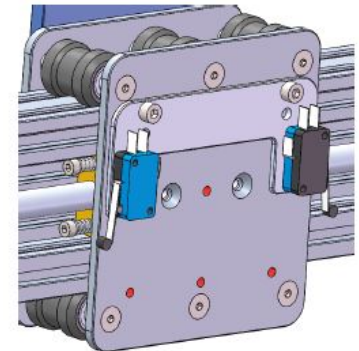
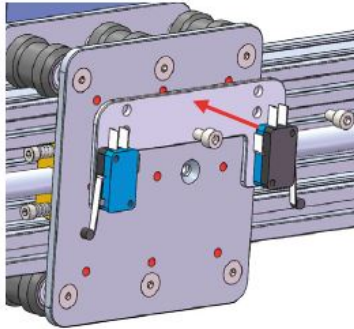
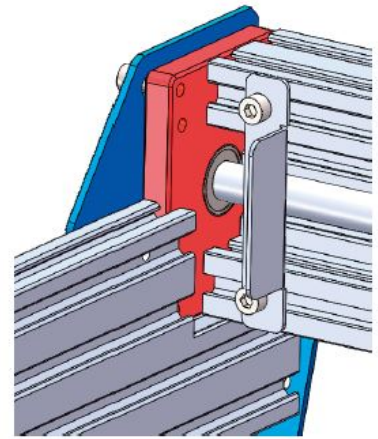
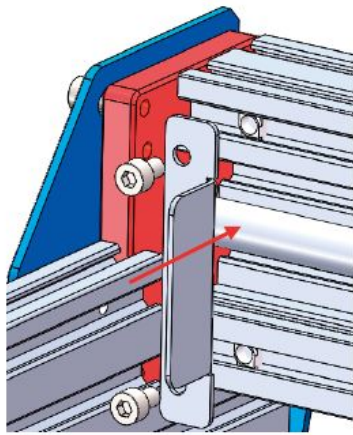
- Step 1: After disassembling your PROVerXL 4030, start by installing the longer aluminum extrusions into the blue corner brackets using the same screws as before. All extended parts of the 1010 kit will be installed just the same as their shorter 4030 counterparts, using the screws, spring washers, and flat washers that you got from disassembly.



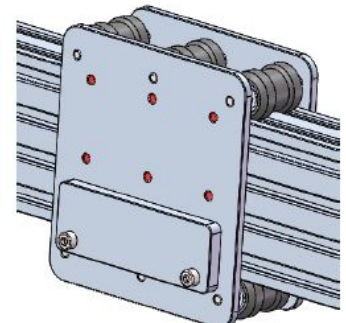
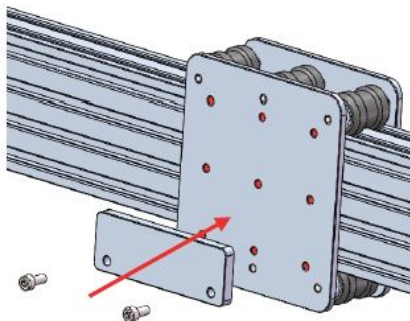
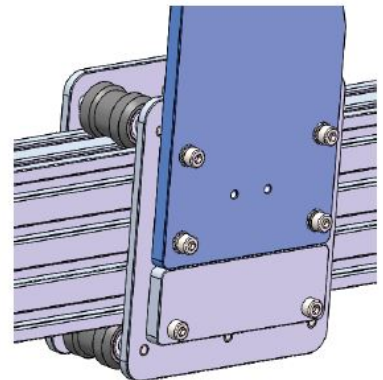
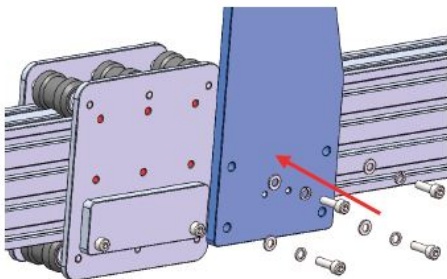
- Step 2: Install the coupler and motor, and tighten the screws of the coupler after the motor is installed. The left and right sides are installed in the same way.



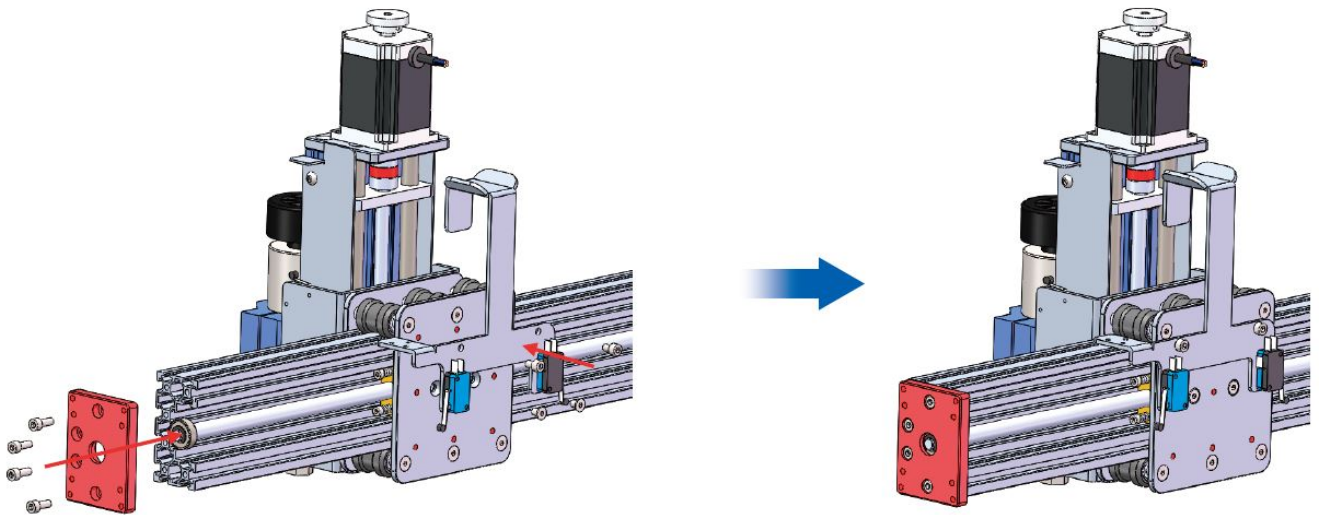
- Step 3: Use the removed screws to install the Y-Axis limit blocks and limit switches, then adjust the limit switches distance.



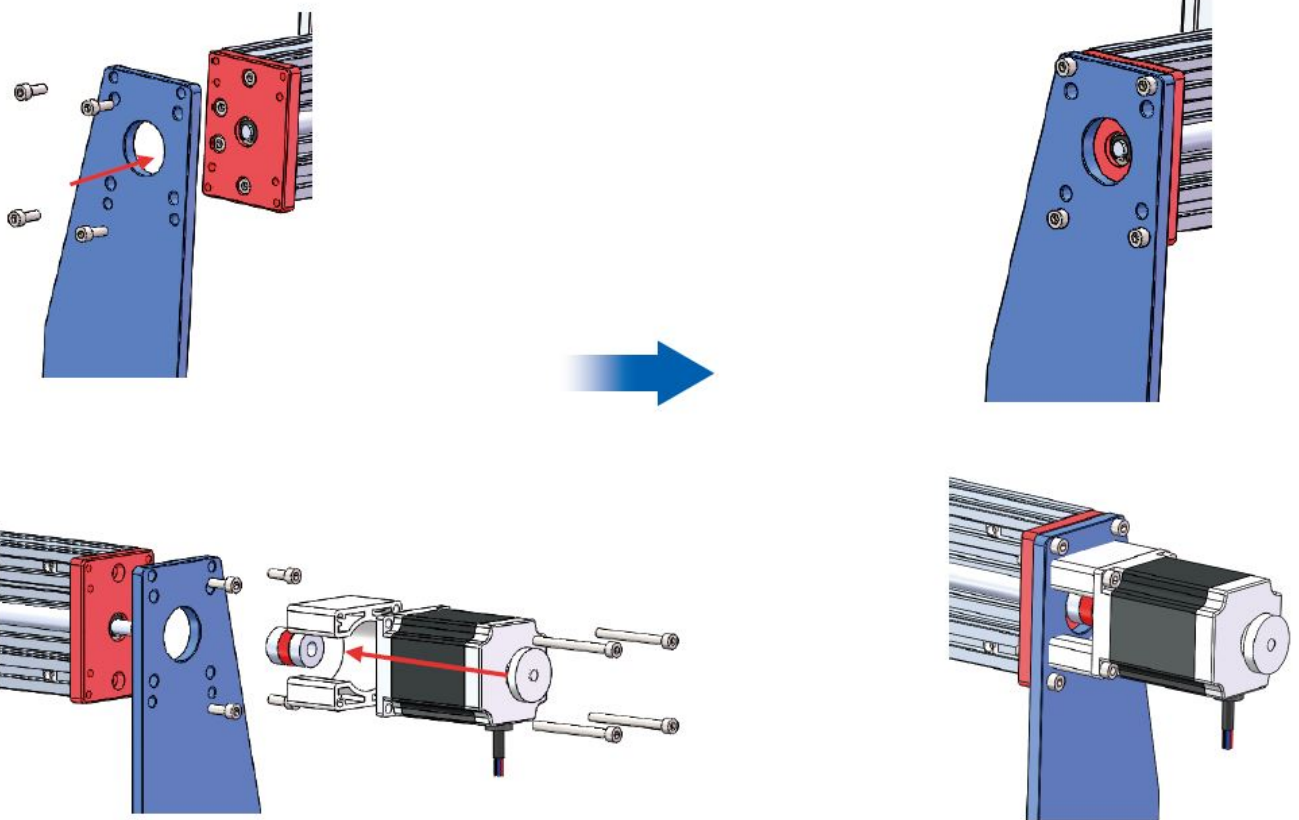
- Step 4: Install the mounting block and gantry assembly using the removed screws. The left and right sides are installed in the same way.



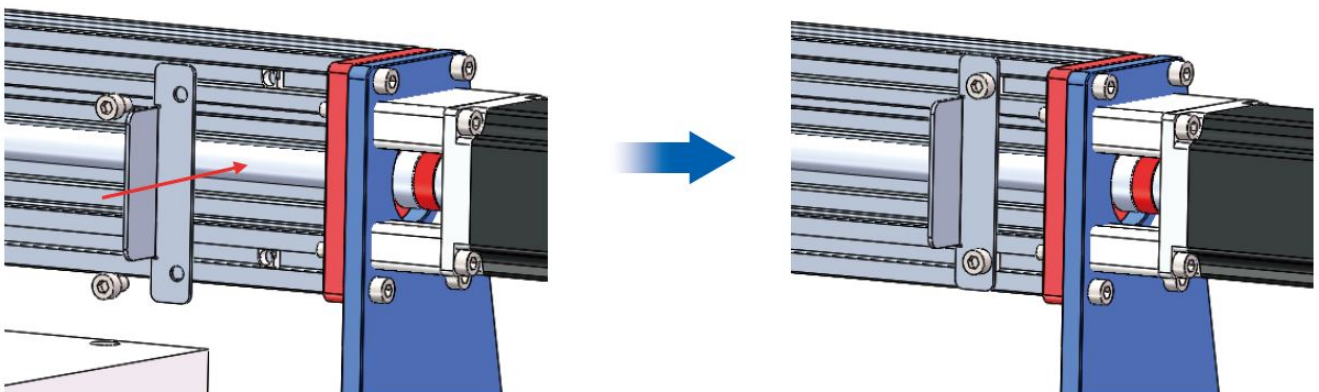
- Step 5: Firstly, remove the side panel of the X-axis gantry (the side without the shaft), then slide on the X-Z assembly so that the holes on the rear plate are aligned with the holes on the slider. With the X-Z assembly installed, put the side panel back on and re-install all screws.



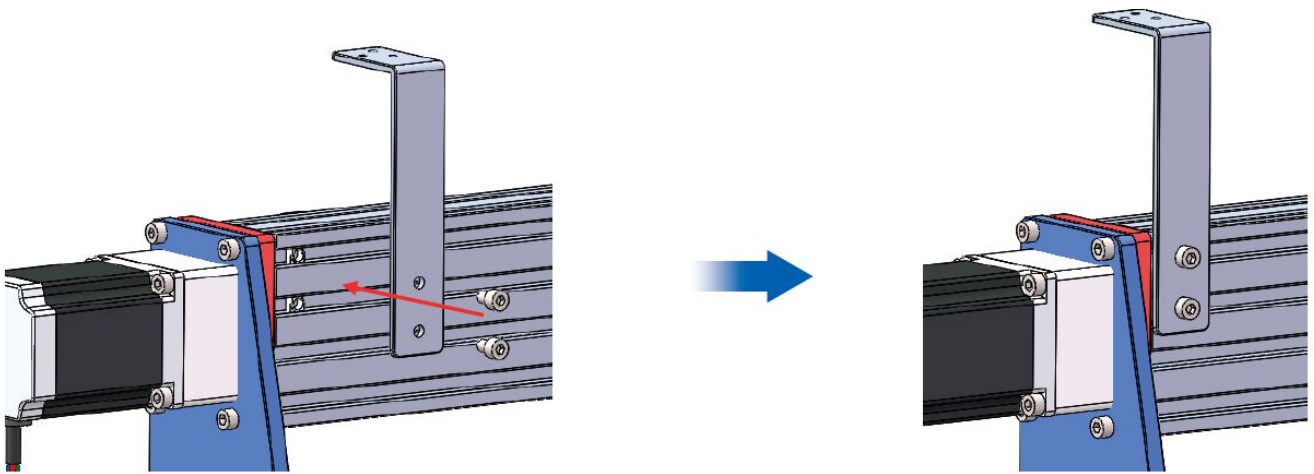
- Step 6: Install the left and right gantry arms with the removed screws.



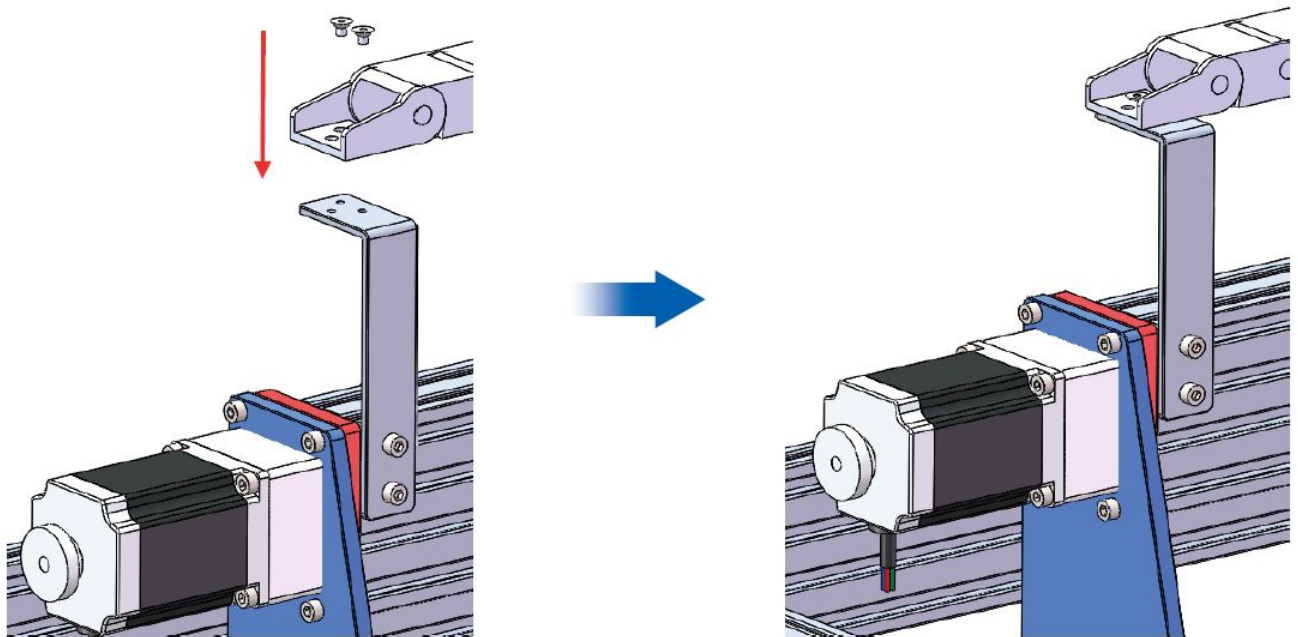
- Step 7: Install the X-axis limit blocks with the removed screws and adjust the limit switches distance.



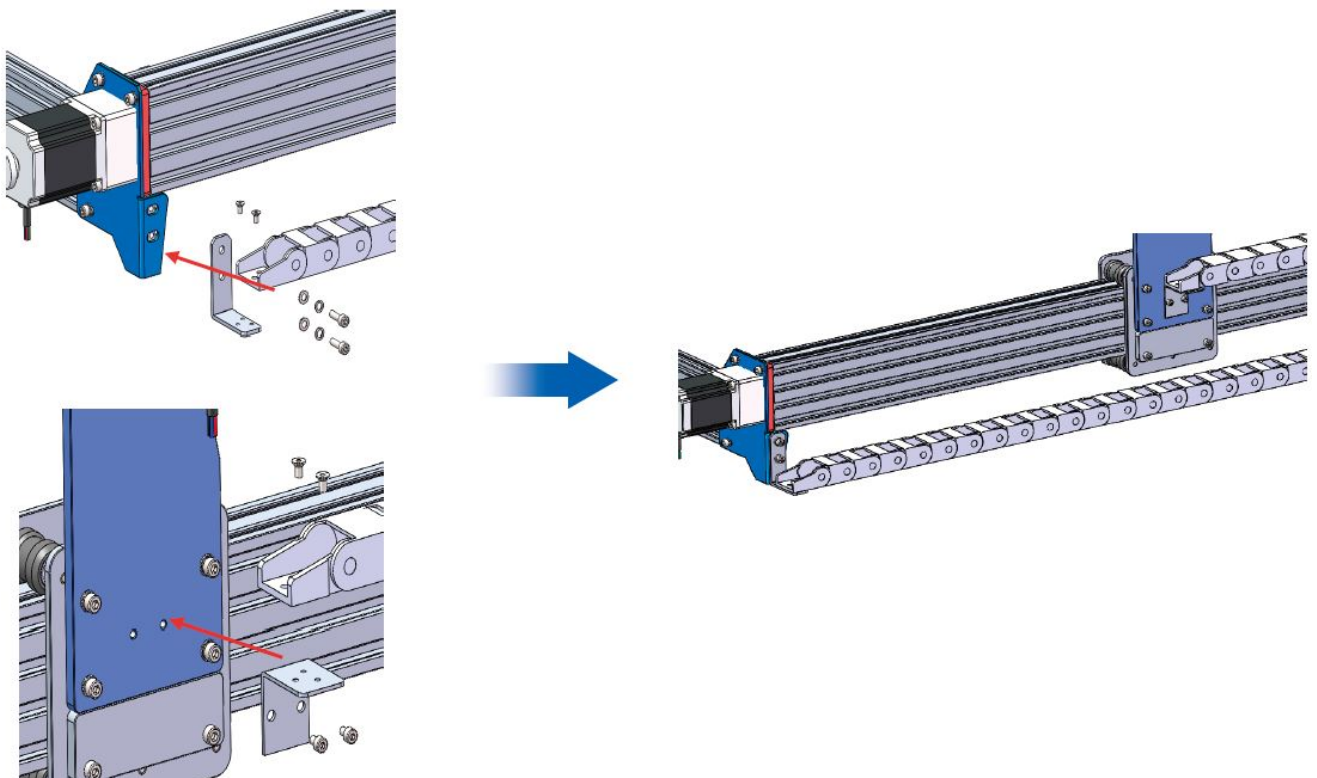
- Step 8: Install the X-axis drag chain fastener using the removed screws.



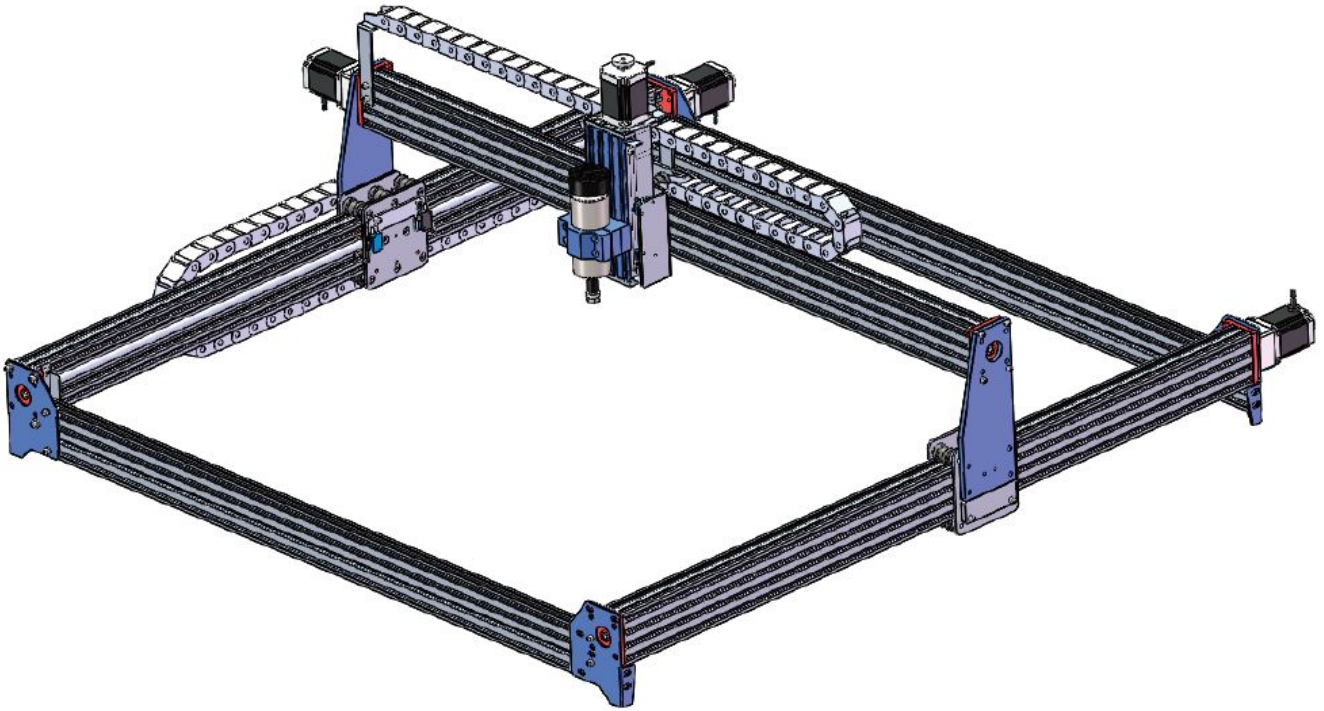
- Step 9: Install the X-axis drag chain using the removed screws.



- Step 10: Install the Drag Chain Mount and Drag Chain with the removed screws.




Installation Completed








Parameter Setting



1. Enter \$\$ in Candle or other software control port (console)


— Spindle
Speed: 


— Jog


  



 


Step: 

Feed: 



☐ Keyboard control




Console 



 


— Spindle
Speed: 


— Jog

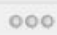
  

Step: 

Feed: 



☐ Keyboard control

Console 

```

$< < $0=5 (step pulse, usec)
$1=25 (step idle delay, msec)
$2=0 (step port invert mask: 00000000)
$3=2 (dir port invert mask: 00000010)
$4=0 (step enable invert, bool)
$5=0 (limit pins invert, bool)
$6=0 (probe pin invert, bool)
$10=3 (status report mask: 00000011)
$11=0.010 (junction deviation, mm)
$12=0.002 (arc tolerance, mm)

```

2. Check the original parameters and modify the following:

- \$21=1
- \$22=1
- \$27=3
- \$30=10000
- \$100=200
- \$101=200
- \$102=160
- \$110=2000
- \$111=2000
- \$112=2000

- \$120=300
- \$121=300
- \$122=300
- \$130=1000
- \$131=1000
- \$132=55

Documents / Resources



[Genmitsu 1010 XY-Axis Extension kit for PROVerXL 4030](#) [pdf] Installation Guide
1010 XY-Axis Extension kit for PROVerXL 4030

References

- [SainSmart | Desktop CNC, 3D Printing & DIY Tools | Power to the Makers – SainSmart.com](#)

Manuals+.