




Genius NX-7015 Wireless Mouse User Guide

[Home](#) » [GENIUS](#) » Genius NX-7015 Wireless Mouse User Guide 



Wireless Mouse
Multi-language quick guide
Copyright© KYE SYSTEMS CORP.

Contents

- [1 NX-7015 Wireless Mouse](#)
- [2 Disclaimer](#)
- [3 Overview](#)
- [4 Factory Settings](#)
- [5 Documents / Resources](#)
 - [5.1 References](#)
- [6 Related Posts](#)

NX-7015 Wireless Mouse

Federal Communication Commission(FCC) interference statement:

This equipment has been tested and found to comply with the limits of a Class B digital device, pursuant to Part 15 of the FCC Rules.

These limits are designed to provide reasonable protection against harmful interference in a residential installation. This equipment generates uses, and can radiate radio frequency energy and, if not installed and used in accordance with the instructions, may cause harmful interference to radio communications.

However, there is no guarantee that interference will not occur in particular installations. If this equipment does cause harmful interference to radio or television reception, which can be determined by turning the equipment off and on, the user is encouraged to try to correct the interference by one or more of the following measures:

- Reorient / Relocate the receiving antenna.

- Increase the separation between the equipment and receiver.
- Connect the equipment into an outlet on a circuit different from that to which the receiver is connected.
- Consult the dealer or an experienced radio / TV technician for help.

This device complies with Part 15 of the FCC Rules. Operation is subject to the following two conditions:

1. this device may not cause harmful interference. and
2. this device must accept any interference received, including interference that may cause undesired operation.

FCC CAUTION: Changes or modifications not expressly approved by the manufacturer responsible for compliance could void the user's authority to operate the equipment.

RF exposure warning: The equipment complies with RF exposure limits set forth for an uncontrolled environment. The antenna(s) used for this transmitter must not be co-located or operating in conjunction with any other antenna or transmitter.

You are cautioned that changes or modifications not expressly approved by the party responsible for compliance could void your authority to operate the equipment.

Disclaimer

The following does not apply to any country where such provisions are inconsistent with local law: KYE Systems Corp. makes no warranties with respect to this documentation, whether expressed or implied. All material is provided "as is". This includes, but is not limited to, any implied warranties of merchantability and fitness is for a particular purpose. The information covered in this document is subject to change without notice.

KYE Systems Corp. assumes no responsibility for any errors that may appear in this document.

All brand names mentioned in this manual are trademarks or registered trademarks of their respective companies.

Copyright KYE Systems Corp. All rights reserved.



Declaration of Conformity

The following designated product:

Wireless Mouse: NX-7XXX Series, NX-8XXXX Series, Micro Traveler 900S, ECO-8XXX Series, Micro Traveler 9000R, Ergo 8XXXX Series M/N:GM-150036/R

is herewith confirmed to comply with the requirements set out in the Council Directive on the Approximation of the Laws of the Member States relating to Radio Equipment Directive (2014/53/EU). For the evaluation regarding the electromagnetic compatibility, the following standards were applied:

EN 300 440 / EN 301 489-1 / EN 301 489-3 / EN 62479 / EN 62368-1

This declaration is prepared for the manufacturer: KYE SYSTEMS CORP.

#492, Sec. 5, Chongxin Rd., Sanchong Dist., New Taipei City 241017, Taiwan (R.O.C.)

Ricky Chen

Project Manager of QACSD

KYE SYSTEMS CORP.

Symbol for Separate Collection in European Countries

This symbol indicates that this product is to be collected separately.

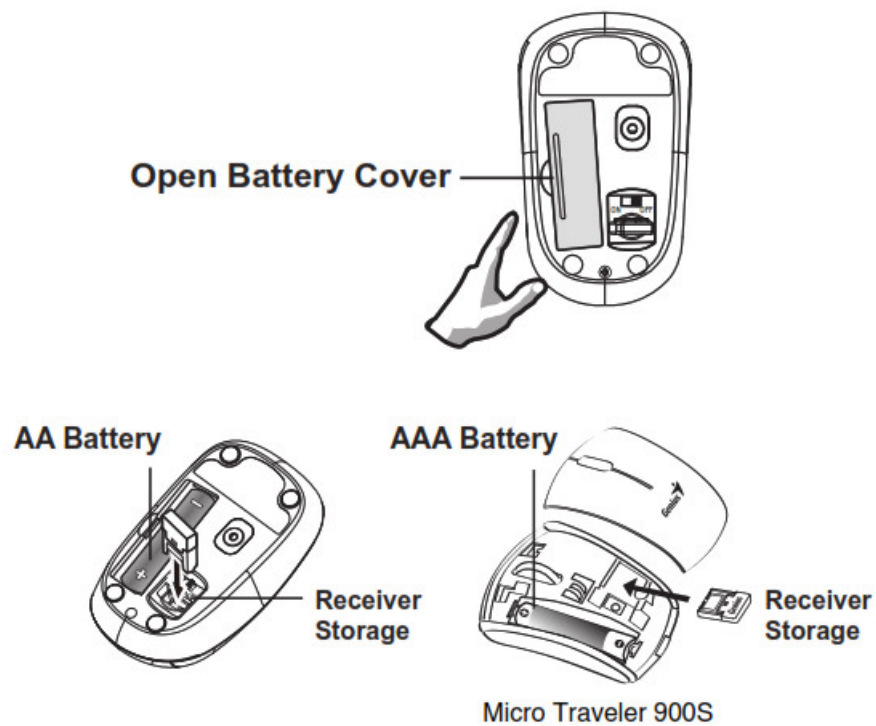


The following apply only to users in European countries:

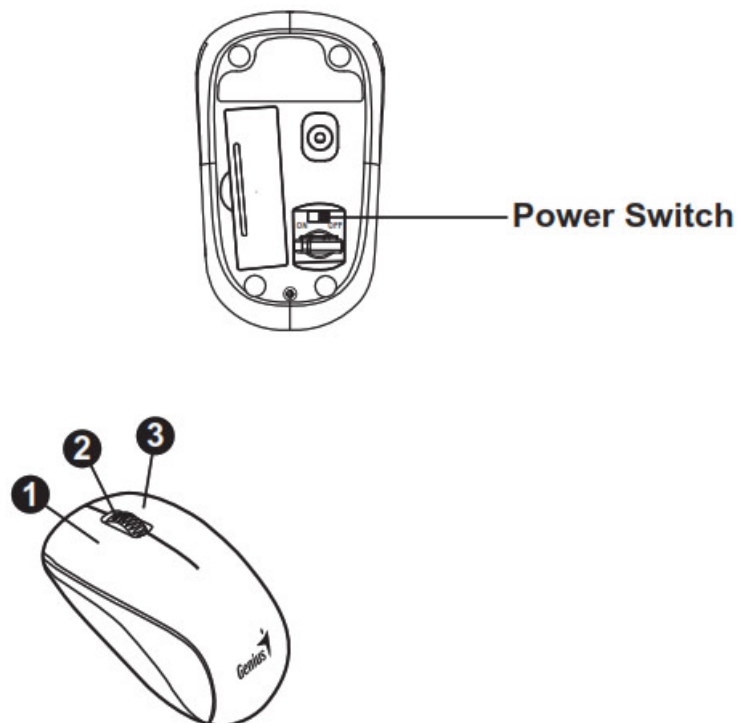
- This product is designated for separate collection at an appropriate collection point. Do not dispose of as household waste.
- For more information, contact the retailer or the local authorities in charge of waste management.

Overview

The instruction is as follows



* Battery life may vary based on user and computing conditions



Factory Settings

1. Left Button: Provides traditional mouse functions like click, double click and drag.
2. Magic-Roller: Press the "Magic-Roller" to surf the Internet and Windows documents.
3. Right Button: Provides traditional mouse click functions.

Remark : Product images shown on the manual are for reference ONLY.

Factory Settings

1. Left Button: Provides traditional mouse functions like click, double click and drag.
2. Magic-Roller: Press the “Magic-Roller” to surf the Internet and Windows documents.
3. Right Button: Provides traditional mouse click functions.

NX-7XXX Series

NX-8XXX Series

MicroTraveler 900S

M/N:GM-150036/R

FCC ID: FSUGMZLM

PATING 5V 100mA(max)

www.geniusnet.com

KYE Systems Corp.


MADE IN CHINA

* For actual items, refer to the physical goods contained herein.

* Product storage conditions : Temperature: -20°C~50°C / Humidity : 5%~85%.



Documents / Resources

	<p>Genius NX-7015 Wireless Mouse [pdf] User Guide</p> <p>NX-7015 Wireless Mouse, NX-7015, Wireless Mouse, Mouse</p>
---	---

References

- [Genius US Website – Genius designs personal peripheral devices with a target to provide a better](#)

[experience in everyone's lives. Visit Genius to find your devices with high quality, easy usage and effective cost.](#)

-  [Каталог декларацій відповідності МТІ](#)