



Genius KM-8206S Wireless Silent Keyboard Mouse Combo User Guide

[Home](#) » [GENIUS](#) » Genius KM-8206S Wireless Silent Keyboard Mouse Combo User Guide 

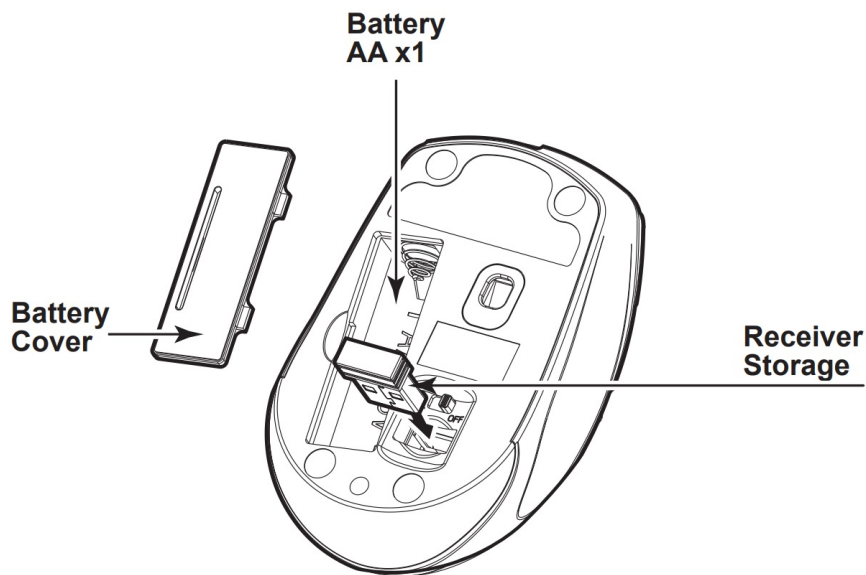
Genius KM-8206S Wireless Silent Keyboard Mouse Combo User Guide



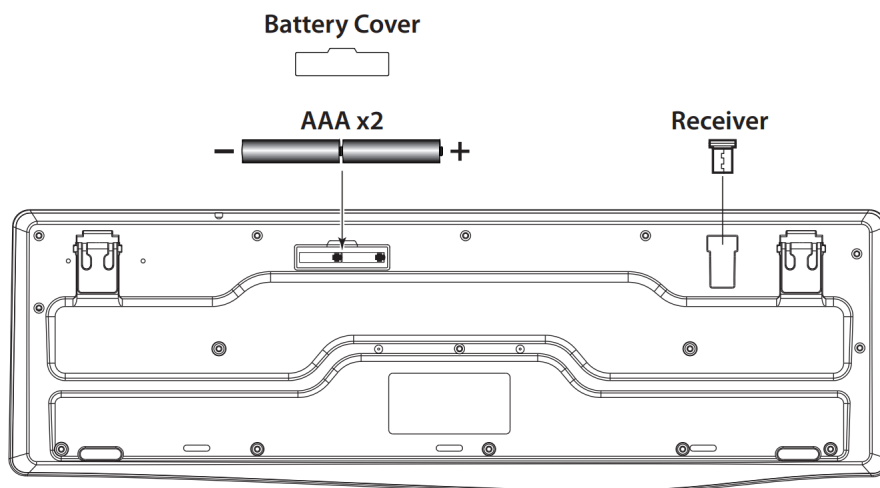
Contents

- 1 Remove the battery cover from the mouse. Install one AA battery into the mouse.
- 2 Remove the battery cover from the keyboard. Install two AAA batteries into the keyboard.
- 3 Plug the receiver into your computer
- 4 Declaration of Conformity
- 5 Documents / Resources
 - 5.1 References

Remove the battery cover from the mouse. Install one AA battery into the mouse.



Remove the battery cover from the keyboard. Install two AAA batteries into the keyboard.



Replace Batteries:

If the mouse or keyboard does not work properly, then the batteries have lost their charge, so you need to replace them.

Warning:

do not mix or use different types of batteries at the same time.

Notes on Battery Usage:

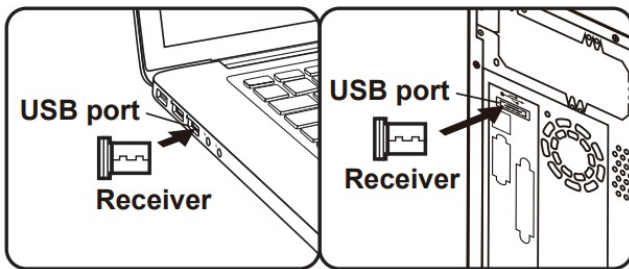
When you use the battery, carefully read and strictly observe the Safety Instructions and the notes described below:

- Different battery types and surrounding temperatures may affect the battery performance.
- Avoid using batteries in extremely cold environments as low temperatures can shorten the battery life and reduce wireless device performance.
- If you are using a new rechargeable battery or rechargeable battery that has not been used for an extended period of time (batteries that pass the expiry date are exceptions) it might affect the period of time according to local regulations.
- you can use this device. Therefore, to maximize their performance and lifetime, we recommend that you fully

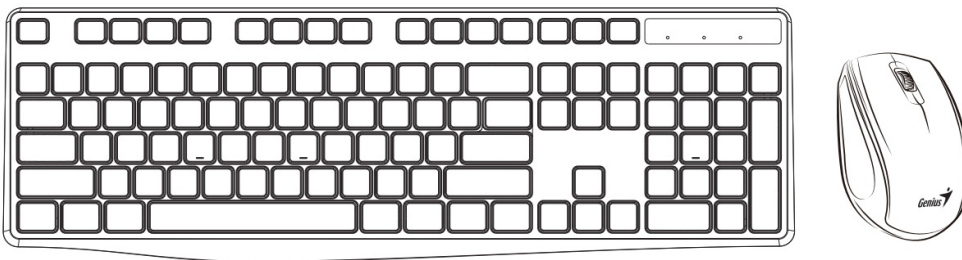
charge the batteries and discharge them for at least one complete cycle before use.

- The battery or wireless device may feel warm when using for an extended period of time.
- This is normal and not a malfunction.
- If you will not be using the batteries for an extended period of time, remove them from the wireless device to prevent leakage or corrosion.
- Always keep the terminals in a clean state.
- Risk of explosion if battery is replaced by an incorrect type.
- Dispose of used batteries according to local regulations.

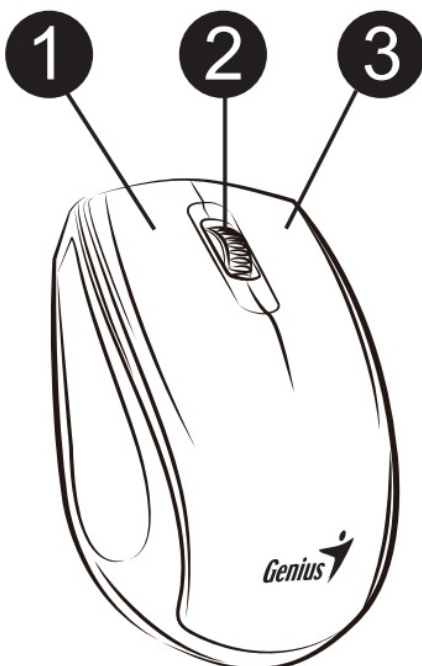
Plug the receiver into your computer



Connect both devices, wait 5-10 seconds and you are ready to begin



Mouse Button Assignments:

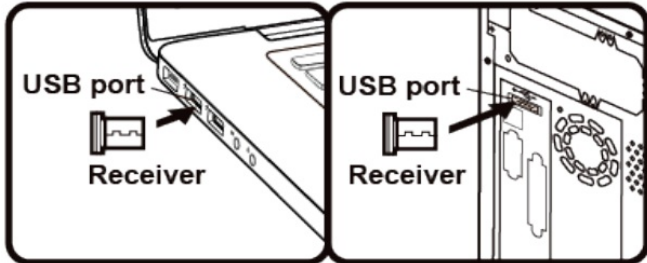


1. **Left Button:** Provides traditional mouse functions like click, double click and drag.

2. **Magic-Roller:** Scroll the button to surf the Internet and Windows documents.
3. **Right Button:** Provides traditional mouse right click function.

Hardware Installation:

1. Install one AA battery into the mouse and two AAA battery into the keyboard.
2. The Pico receiver from the mouse and plug it into a USB port on your PC.



Replace batteries:

If the mouse or keyboard does not work properly, then the batteries have lost their charge, so you need to replace them.

Warning: do not mix or use different types of batteries at the same time.

Mouse button assignments:

1. Left Button: Provides traditional mouse functions like click, double click and drag.
2. Magic-Roller: Scroll the button to surf the Internet and Windows documents.
3. Right Button: Provides traditional mouse right click function.

Function keys:

	Fn F1	Media Player
	Fn F2	Volume
	Fn F3	Volume
	Fn F4	Mute
	Fn F5	Previous Track
	Fn F6	Next Track
	Fn F7	Play / Pause
	Fn F8	Stop Playing
	Fn F9	Web / Home
	Fn F10	Email
	Fn F11	My computer

Declaration of Conformity

- The following designated product:

- **M/N: KM-8206S**

is herewith confirmed to comply with the requirements set out in the Council Directive on the Approximation of the Laws of the Member States relating to Radio Equipment Directive (2014/53/EU). For the evaluation regarding the electromagnetic compatibility, the following standards were applied:

- EN 300 328 / EN 301 489-1 / EN 301 489-17 / EN 62479 / EN 62368-1

- **This declaration is prepared for the manufacturer:**

KYE SYSTEMS CORP. # 492, Sec. 5, Chongxin Rd., Sanchong Dist., New Taipei City 241017, Taiwan (R.O.C.)

Ricky Chen

Project Manager of QACSD

KYE SYSTEMS CORP.

Symbol for Separate Collection in European Countries



This symbol indicates that this product is to be collected separately.

The following apply only to users in European countries:

- This product is designated for separate collection at an appropriate collection point. Do not dispose of as household waste.
- For more information, contact the retailer or the local authorities in charge of waste management.

Federal Communication Commission interference statement:

This equipment has been tested and found to comply with the limits of a Class B digital device, pursuant to Part 15 of the FCC Rules. These limits are designed to provide reasonable protection against harmful interference in a residential installation. This equipment generates uses, and can radiate radio frequency energy and, if not installed and used in accordance with the instructions, may cause harmful interference to radio communications. However, there is no guarantee that interference will not occur in particular installations. If this equipment does cause harmful interference to radio or television reception, which can be determined by turning the equipment off and on, the user is encouraged to try to correct the interference by one or more of the following measures: Reorient / Relocate the receiving antenna. Increase the separation between the equipment and receiver. Connect the equipment into an outlet on a circuit different from that to which the receiver is connected. Consult the dealer or an experienced radio / TV technician for help.

FCC CAUTION:

Changes or modifications not expressly approved by the manufacturer responsible for compliance could void the user's authority to operate the equipment.

This device complies with Part 15 of the FCC Rules. Operation is subject to the following two conditions:

1. this device may not cause harmful interference, and
2. this device must accept any interference received, including interference that may cause undesired operation.

RF exposure warning: The equipment complies with RF exposure limits set forth for an uncontrolled environment. The antenna(s) used for this transmitter must not be co-located or operating in conjunction with any other antenna or transmitter. You are cautioned that changes or modifications not expressly approved by the party responsible for compliance could void your authority to operate the equipment.

Disclaimer**The following does not apply to any country where such provisions are inconsistent with local law:**

KYE Systems Corp. makes no warranties with respect to this documentation, whether expressed or implied. All material is provided "as is". This includes, but is not limited to, any implied warranties of merchantability and fitness is for a particular purpose. The information covered in this document is subject to change without notice. KYE Systems Corp. assumes no responsibility for any errors that may appear in this document. All brand names mentioned in this manual are trademarks or registered trademarks of their respective companies.

Copyright© KYE Systems Corp. All rights reserved.

KYE SYSTEMS CORP.

492, Sec. 5, Chongxin Rd., Sanchong Dist.,
New Taipei City 241017, Taiwan

Ricky Chen

Ricky Chen
QADV Department
KYE SYSTEMS CORP

Receiver

M/N: GM-230004

FCC ID: FSUGMZMH

Rating: DC 5V 50mA (Max)



www.geniusnet.com

KYE Systems Corp.

MADE IN CHINA

The frequency band of product is 2400 MHz – 2483.5 MHz and the radio-frequency transmitted maximum power (equivalent isotropic radiated power, EIRP) less than 10 mW.

Operating temperature: 0 ~ 40°C

Product storage conditions: Temperature: -20°C ~ 50°C / Humidity: 5%~ 85%

KYE Systems Corp.

#492, Sec. 5, Chongxin Rd., Sanchong Dist.,
New Taipei City 241017, Taiwan

Tel: 886-2-2995-6645

Fax: 886-2-2995-6649

Email: support@geniusnet.com.tw (Tech. Support)

<http://www.geniusnet.com>



- For actual items, refer to the physical goods contained herein.
- Product storage conditions : Temperature: -20°C~50°C / Humidity : 5%~85%.



Documents / Resources



[Genius KM-8206S Wireless Silent Keyboard Mouse Combo](#) [pdf] User Guide

KM-8206S Wireless Silent Keyboard Mouse Combo, KM-8206S, Wireless Silent Keyboard Mouse Combo, Silent Keyboard Mouse Combo, Keyboard Mouse Combo, Mouse Combo, Combo

References

- [User Manual](#)

Manuals+. Privacy Policy

This website is an independent publication and is neither affiliated with nor endorsed by any of the trademark owners. The "Bluetooth®" word mark and logos are registered trademarks owned by Bluetooth SIG, Inc. The "Wi-Fi®" word mark and logos are registered trademarks owned by the Wi-Fi Alliance. Any use of these marks on this website does not imply any affiliation with or endorsement.