



Genius GX-17UV Vibration Gamepad User Guide

[Home](#) » [GENIUS](#) » Genius GX-17UV Vibration Gamepad User Guide 

Contents

- [1 Genius GX-17UV Vibration Gamepad](#)
- [2 Function Introduction](#)
- [3 Special Function](#)
- [4 Mode differentiation](#)
- [5 Connecting PC](#)
- [6 Warning or Notice](#)
- [7 CONTACT](#)
- [8 Documents / Resources](#)



Genius GX-17UV Vibration Gamepad



Function Introduction

1. **RT key:** Function command key, action button.
2. **RB key:** Function command key, action button.
3. **LB key:** Function command key, action button.
4. **LT key:** Function command key, action button.
5. **AUTO key:** Fully automatic continuous triggering function key.
6. **SELECT key:** Select key. No.7 key in the controller.
7. **C key:** CLEAR button, which cancels continuous triggering key with TURBO function set.
8. **START key:** It is the 8th key on the controller, and it is pause or start key in the game.
9. **MODE key:** Mode switching button, which can switch between Xinput/Dinput/Android modes by being long pressed for 6 seconds. The default mode is Xinput When powered on.
10. **X key:** Function command key, action button.
11. **Y key:** Function command key, action button.
12. **B Key:** Function command key, action button.
13. **A key:** Function command key, action button.
14. **Direction control key:** Controls the selection of direction during game settings.
15. **TURBO key:** Continuous triggering button.
16. LED indicator light.
17. **Left joystick:** Implement special functions within the game. Press down to function 9 key in the controller.
18. **Right joystick:** Implement special functions within the game. Press down to function 10 key in the controller.

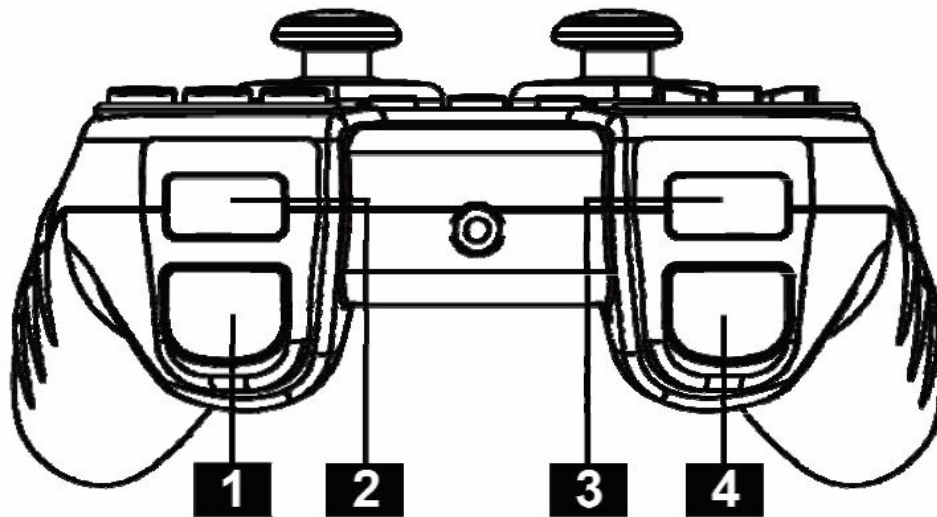


Figure 1

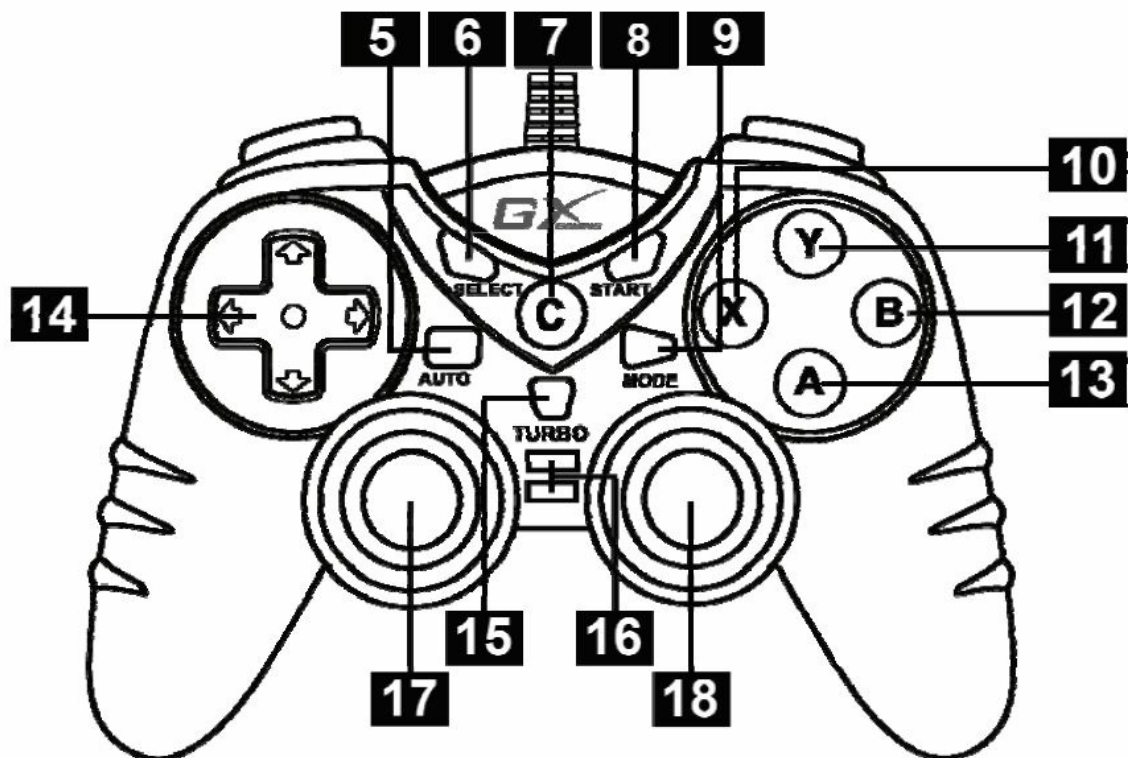


Figure 2

Special Function

1. **AUTO key:** AUTO key is a fully automatic continuous triggering function button; Setting method: Press any "Command key+AUTO key" on the gamepad, and the key will enter full automatic continuous triggering . After releasing the keys, the keys will also automatic continuous triggering. Cancel AUTO full automatic continuous triggering: Press the "Command key+AUTO key" with the AUTO function setting to cancel full automatic continuous triggering.
2. **TURBO key:** automatic continuous triggering function key; Setting method: Press any "Command key+TURBO

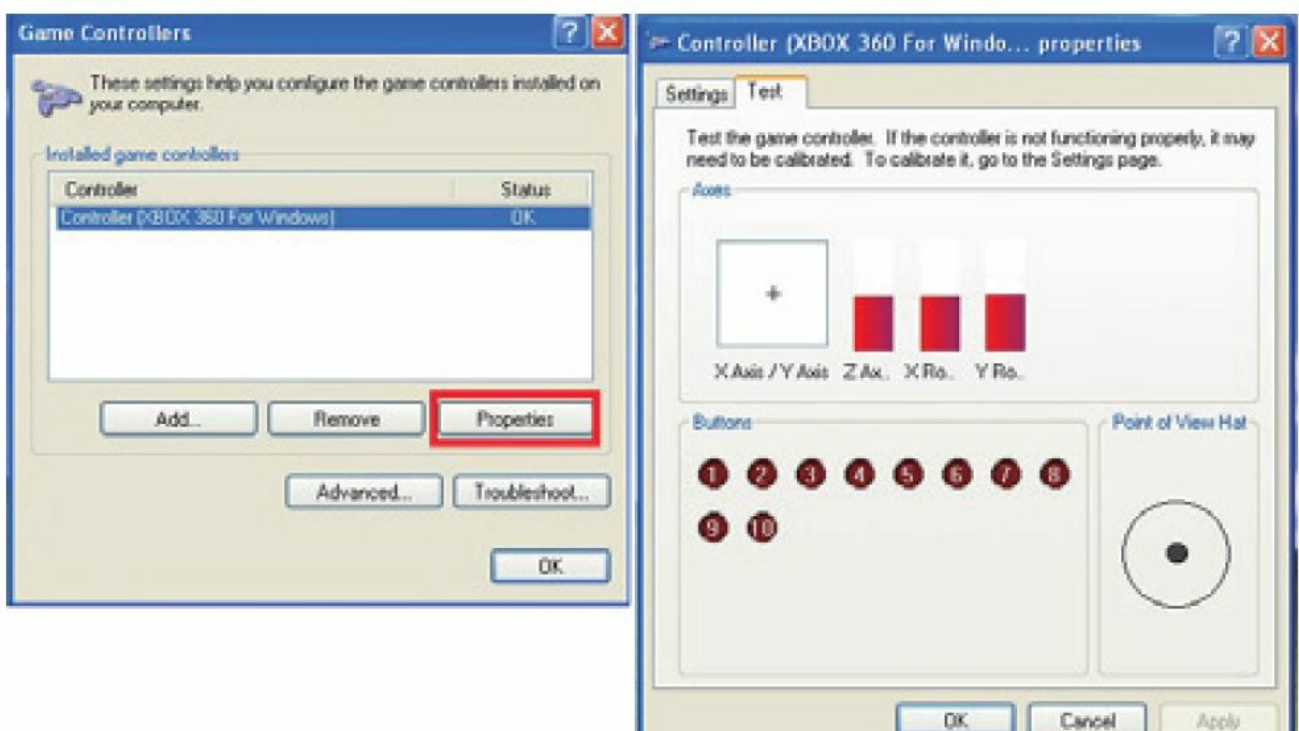
key” on the gamepad, and this key will enter the automatic triggering function; After setting, as long as we long press the command key, this key will enter automatic continuous triggering . Cancel TURBO triggering function: Press the “Command key+C key” with TURBO function setting to cancel automatic continuous triggering.

Mode differentiation

1. **PC-Xinput mode:** When powered on, the default Xinput mode (xbox360 mode) is selected, and the blue light of gamepad is on; Long press MODE key for 5 seconds, Both red and blue lights will light up in PC-Directinput mode. In Directinput mode, press MODE key one time, and enter Directinput digital mode with blue light lighting up. In digital mode, the left joystick replaces the cross key function, and the right joystick replaces the A/B/X/Y keys. It is suitable for playing fighting games in this mode.
2. **Android mode:** After the gamepad is connected to Android device, the default blue light is on. Long press MODE key for 5 seconds with the red and blue lights lighting up simultaneously, and then long press MODE key for 5 seconds again to indicate that the red light is on as Android mode. (Refer to figure 2, No.9 is Mode key)
3. **PS3 platform:** When the gamepad is connected to PS3 host, the default is PS3 mode and the blue light is on.

Connecting PC

- Connect the USB port of the gamepad to USB port (front or back) of PC, and PC system will automatically recognize it as a “USB ergonomic input device”.
- Then open “My Computer” → “Control Panel” → “Game Controller” (or “Game Options”), and after opened, you can see the Controller “USB Controller” and Status “OK” displayed. This indicates that the gamepad is connected to PC and can be used normally.



Warning or Notice


1. Important ergonomic information: Prolonged repetitive movements, inappropriate workspace arrangements, incorrect body posture, or bad work habits may lead to discomfort and damage to nerves, tendons, and muscles. If you feel pain, numbness, tingling, weakness, swelling, burning, cramps, or stiffness in your palms, wrists, arms, shoulders, neck, or back, please have a qualified doctor examine you.
2. It is recommended to develop good habits when using the product, such as taking a ten minute break every hour, keeping the wrists, elbows, and shoulders at the most relaxed angle, and keeping the forearms level with the ground.
3. Please do not disassemble the product, and do not use it in damp, greasy, dusty, and extreme temperatures (extreme low temperature, extreme high temperature); Prohibit exposure to sunlight and use non neutral chemical solvents for cleaning; Avoid liquid immersion.

CONTACT

- KYE Systems Corp.
- #492, Sec. 5, Chongxin Rd., Sanchong Dist.,
- New Taipei City 241017, Taiwan
- **Tel:** 886-2-2995-6645
- **Fax:** 886-2-2995-6649
- **Email:** support@geniusnet.com.tw. (Tech. Support)
- <http://www.geniusnet.com>.
- For actual items, refer to the physical goods contained herein.
- **Product storage conditions Temperature:** -20°C~50°C / Humidity : 5%~85%. 12030115400-A

Copyright© KYE SYSTEMS CORP

Documents / Resources

 <p>Multi-language quick guide Copyright © 2008 KYE</p>	<p>Genius GX-17UV Vibration Gamepad [pdf] User Guide GX-17UV Vibration Gamepad, GX-17UV, Vibration Gamepad, Gamepad</p>
--	---