


Geniatech
APC3588
Edge
Computing
Box



Geniatech APC3588 Edge Computing Box User Guide

[Home](#) » [Geniatech](#) » Geniatech APC3588 Edge Computing Box User Guide 

Contents

- [1 Geniatech APC3588 Edge Computing Box](#)
- [2 Product Usage Instructions](#)
- [3 Product Features](#)
- [4 External interface](#)
- [5 Setup Connection](#)
- [6 Settings](#)
- [7 WIFI](#)
- [8 Bluetooth](#)
- [9 HDMI](#)
- [10 Type-C DP](#)
- [11 RJ45 Port Verification](#)
- [12 SIM card](#)
- [13 Fcc Statement](#)
- [14 Customer Service](#)
- [15 Frequently Asked Questions](#)
- [16 Documents / Resources](#)
 - [16.1 References](#)

Geniatech

Geniatech APC3588 Edge Computing Box



Specifications

- **Model:** APC3588
- **Supports:** 32 channels 1080P 30FPS, 8K video editing and decoding
- **Memory:** LPDDR up to 32GB, EMMC up to 512GB
- **Interfaces:** HDMI IN, USB camera combination, Dual HDMI Output, DP Out (Through Type-C), TYPE-C/USB3.0/USB2.0/GPIO/CAN/RS485/RS232/TTL, M.2/SATA3.0/GT-IOT/SPI/I2C/UART/USB2.0
- **Network:** Dual Gigabit wired network port, optional POE power supply, 2.4G/5G dual-band wifi, Bluetooth
- **Operating Systems:** Android 13, Debian 11, Ubuntu

Product Usage Instructions

Hardware Setup

- Connect the Edge Computing Box to a power source using the provided power adapter.
- Connect your input devices, such as cameras or HDMI sources, to the appropriate ports on the box.
- Connect the box to your display or monitor using the HDMI output or DP Out port.

Software Installation

- Power on the Edge Computing Box and follow the on-screen instructions to set up your preferred operating system.
- Install any necessary drivers or software for your specific applications.

Device Configuration

- Configure network settings, such as Wi-Fi or Ethernet connections, based on your requirements.
- Adjust video settings and resolutions to suit your display and content needs.

Usage

- Utilize the various interfaces and features of the Edge Computing Box according to your project requirements.
- Explore video editing capabilities and decoding functions supported by the device.

Version History

Time	Version	Purpose	Author	Comment
2024.12.06	1.0	establish		

Product Features

- 1. supports 32 channels 1080P 30FPS, supports 8K video editing and decoding.
- 2. Supports LPDDR up to 32GB and EMMC up to 512GB.
- 3. Supports HDMI IN video input and USB camera combination.
- 4. Support Dual HDMI Output and DP Out(Through Type-C).
- 5. Support TYPE-C/USB3.0/USB2.0/GPIO/CAN/RS485/RS232/TTL peripheral interfaces.
- 6. Support M.2/SATA3.0/ GTIOT/SPI/ I2C/UART/USB2.0 and other internal expansion
- 7. Supports dual Gigabit wired network port with optional POE power supply, and at the same time can support 2.4G/5G dual-band wifi and Bluetooth.
- 8. Support multiple operating systems: Android13 & Debian11, & Ubuntu
- 9. The built-in watchdog and RTC battery can support 7*24 hours of stable operation.
- 10. Supports 4G/5G LTE/Zigbee communication module (optional).

External interface



Setup Connection

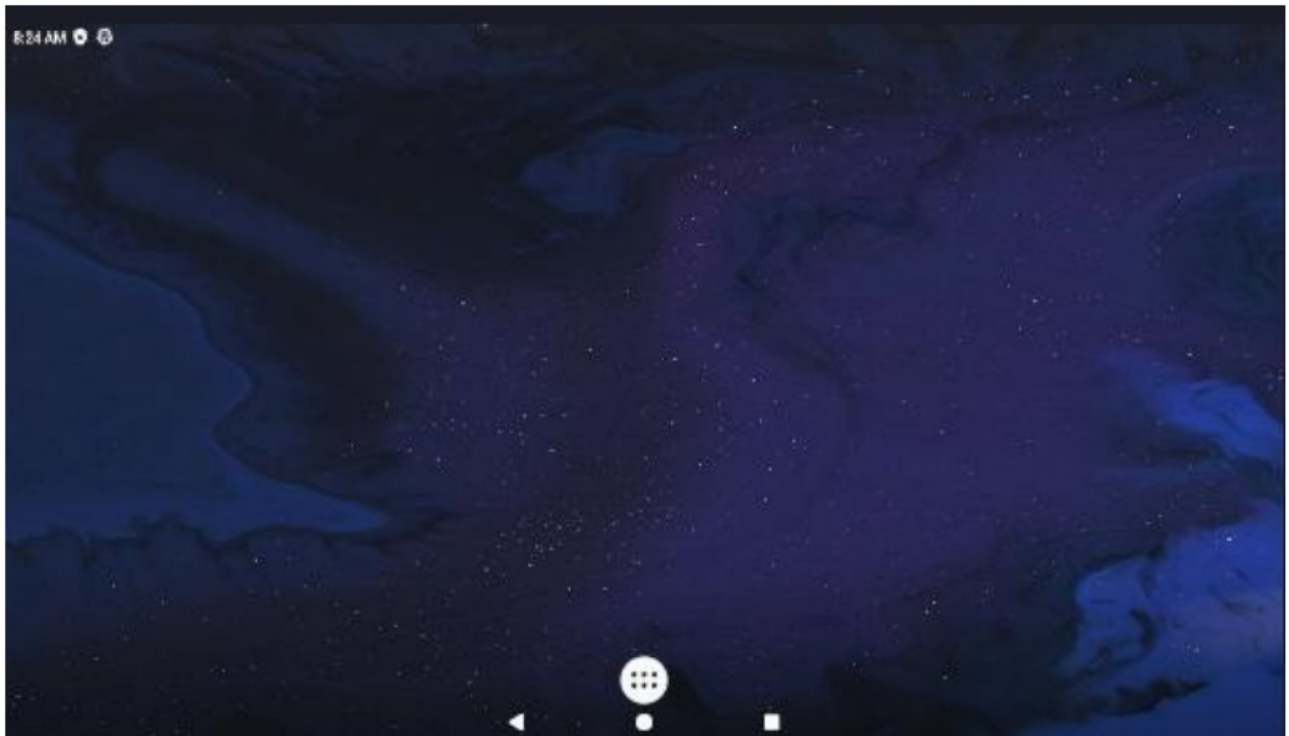
- Place APC3588 on a flat platform near the computer, and make sure nothing blocks the remote control signal.
- Power on automatically and go to homepage

Display when Power Up

- After powering on, the screen displays software version information.

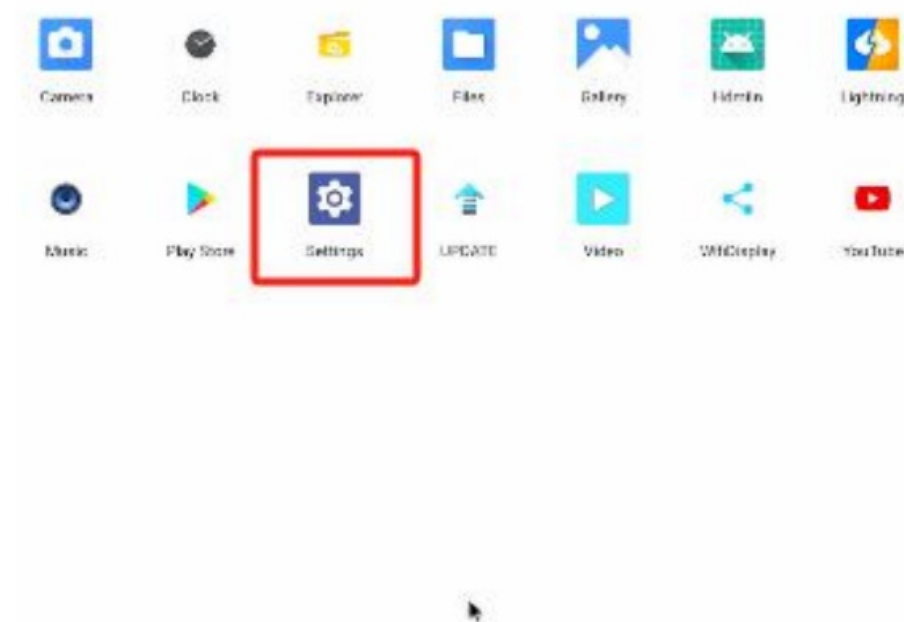


- Home Screen display.



Settings

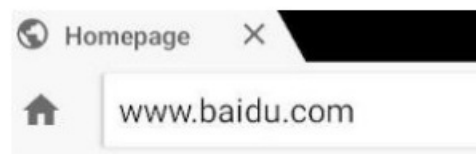
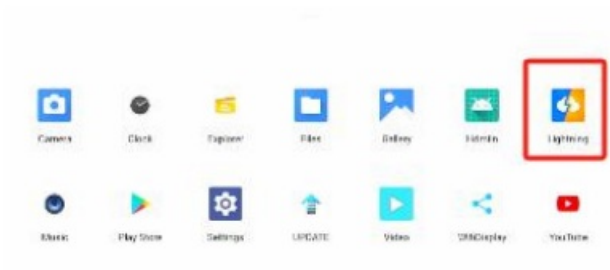
- Click on  the icon. Go to the Features home page and find the Settings bar.



WIFI

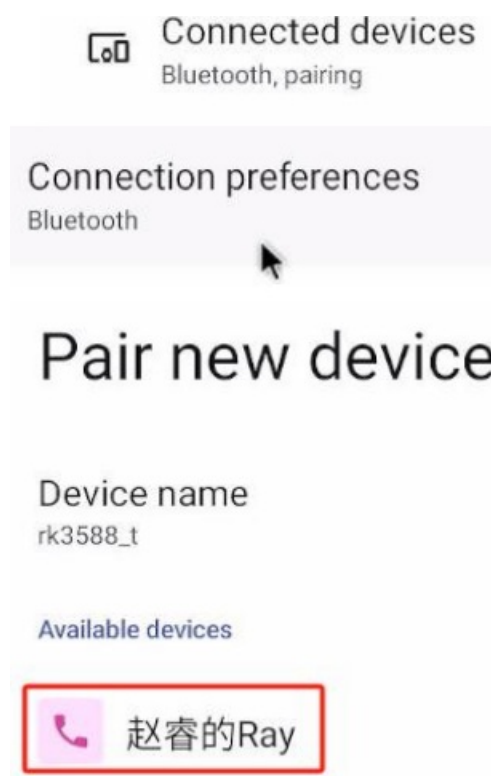
- Click on Settings and go to Network & internet
- Connect to the network and verify that the network is available. Input WWW.baidu.com.
- The network is working normally





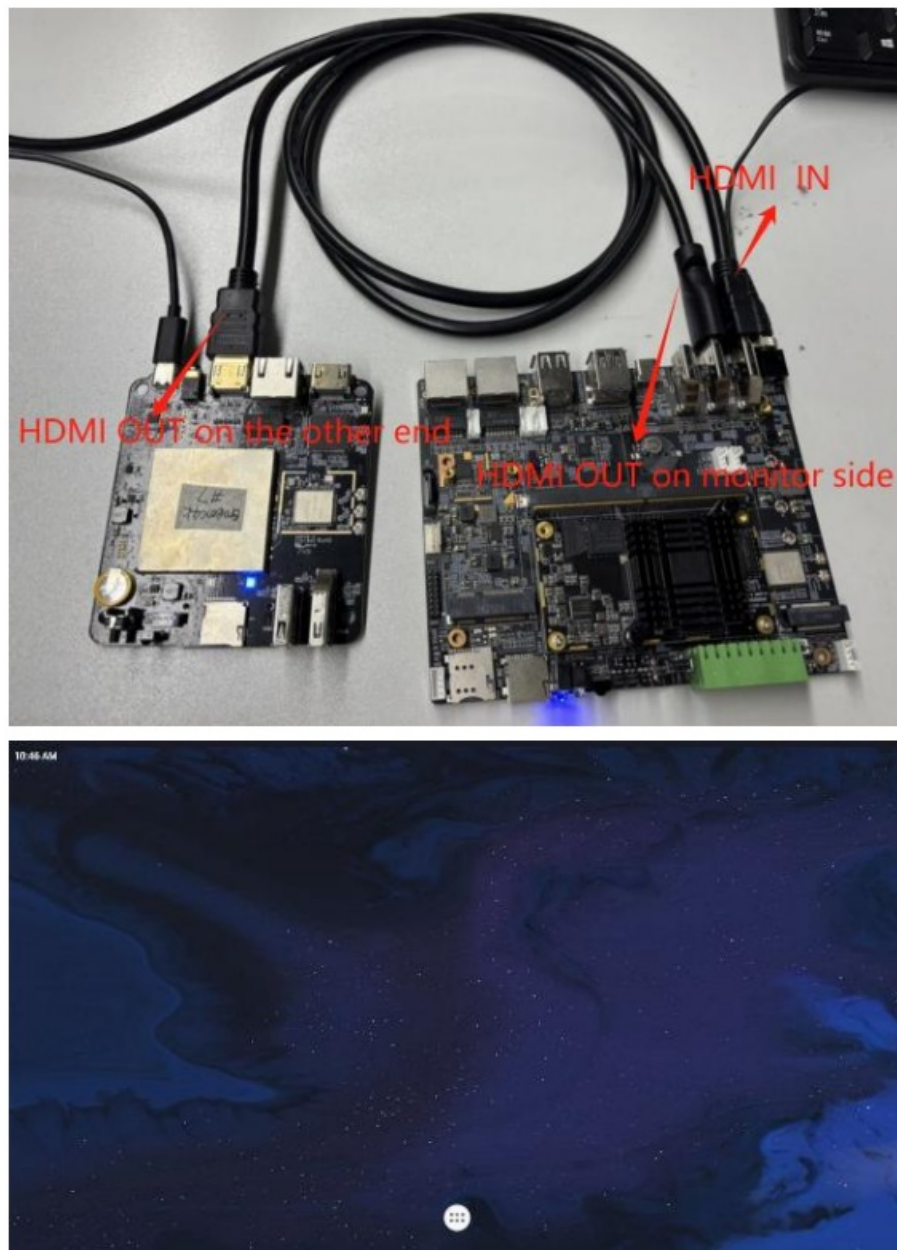
Bluetooth

- Click Connected devices, open the Bluetooth, complete the match, open the cell phone for file transfer, and verify that the Bluetooth can be used normally



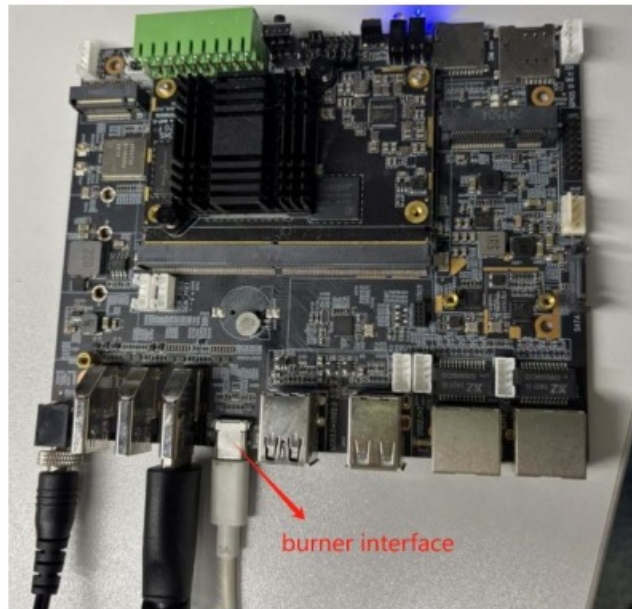
HDMI

- Verify HDMI IN and HDMI OUT (OUT1) at the same time, access HDMI IN, connect the monitor end OUT screen casting, with the help of the other end of the OUT screen output, can receive the screen, HDMI normal use



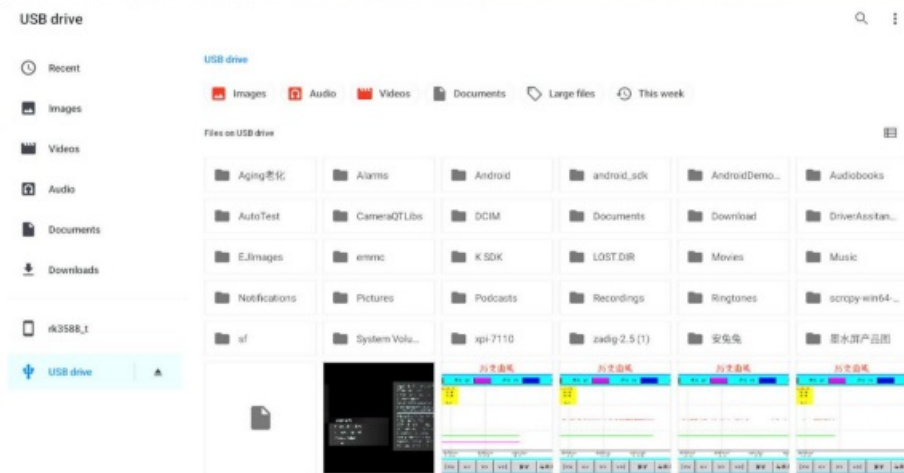
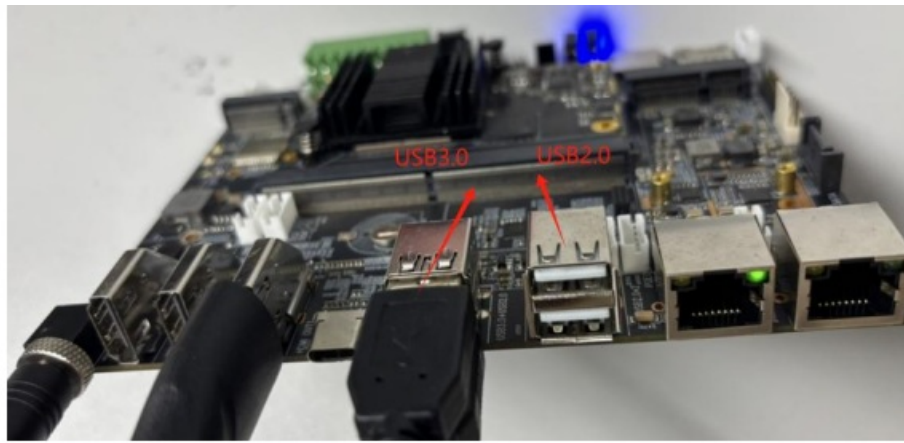
Type-C DP

- Type-C burn-in interface: Access Type-C while holding down the burn-in button, access the power supply, and enter the burn-in interface



USB2.0/3.0

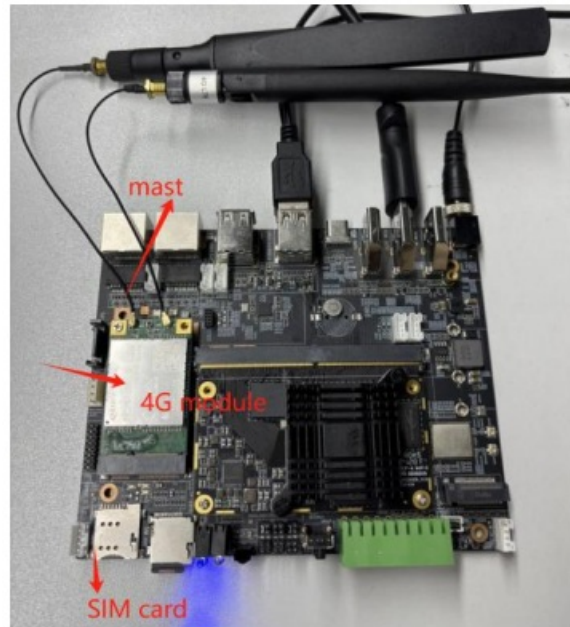
1. USB2.0, USB3.0 access to wired mouse and wired keyboard, mouse and keyboard can be used normally
2. Access to the U disk is automatically mounted, open the file, click on the U disk, USB interface normal use



RJ45 Port Verification

RJ45 dual-network wired connection: connected to the network cable, the network port status display orange light blinking is Gigabit, 100 megabit is a green light, you can enter the browser through the system Lightning APP www.baidu.com network for normal use

network is can be used normally.



Network & internet



Fcc Statement

This device complies with part 15 of the FCC rules. Operation is subject to the following two conditions:

1. this device may not cause harmful interference,
2. This device must accept any interference received, including interference that may cause undesired operation.

Changes or modifications not expressly approved by the party responsible for compliance could void the user's authority to operate the equipment.

NOTE: This equipment has been tested and found to comply with the limits for a Class B digital device, according to part 15 of the FCC Rules. These limits are designed to provide reasonable protection against harmful interference in a residential installation. This equipment generates uses and can radiate radio frequency energy and, if not installed and used under the instructions, may cause harmful interference to radio communications. However, there is no guarantee that interference will not occur in a particular installation. If this equipment does cause harmful interference to radio or television reception, which can be determined by turning the equipment off and on, the user is encouraged to try to correct the interference by one or more of the following measures:

- Reorient or relocate the receiving antenna.
- Increase the separation between the equipment and receiver.
- Connect the equipment into an outlet on a circuit different from that to which the receiver is connected.
- Consult the dealer or an experienced radio/TV technician for help.

The user manual or instruction manual for an intentional or unintentional radiator shall caution the user that changes or modifications not expressly approved by the party responsible for compliance could void the user's authority to operate the equipment

Radiation Exposure Statement

This equipment complies with FCC radiation exposure limits set forth for an uncontrolled environment. This equipment should be installed and operated with a minimum distance of 20cm between the radiator and your body.


Customer Service

- Room 02-04, 10/F, Block A, Building 8, Shenzhen International Innovation Valley, Dashi Road, Nanshan District, Shenzhen, Guangdong, China
- E-mail: support@geniatech.com
- Tel: +8675586028588
- Shenzhen Geniatech Inc., Ltd.
- www.geniatech.com

Frequently Asked Questions

- **Q: Can I connect multiple cameras to the Edge Computing Box?**
 - **A:** Yes, the box supports up to 32 channels for camera input.
- **Q: How do I switch between different operating systems?**
 - **A:** You can select the desired operating system during boot-up or through the system settings.
- **Q: What is the recommended distance between the device and my body?**
 - **A:** Maintain a minimum distance of 20cm between the device radiator and your body for radiation exposure compliance.

Documents / Resources

	<p>Geniatech APC3588 Edge Computing Box [pdf] User Guide APC3588, ZJU-APC3588, ZJUAPC3588, apc3588, APC3588 Edge Computing Box, APC3588, Edge Computing Box, Computing Box</p>
---	--

References

-  [User Manual](#)

[Manuals+](#), [Privacy Policy](#)

This website is an independent publication and is neither affiliated with nor endorsed by any of the trademark owners. The "Bluetooth®" word mark and logos are registered trademarks owned by Bluetooth SIG, Inc. The "Wi-Fi®" word mark and logos are registered trademarks owned by the Wi-Fi Alliance. Any use of these marks on this website does not imply any affiliation with or endorsement.