




## GENEXIS G2110C-2.5G FiberTwist Series User Guide

[Home](#) » [genexis](#) » GENEXIS G2110C-2.5G FiberTwist Series User Guide 

### Contents

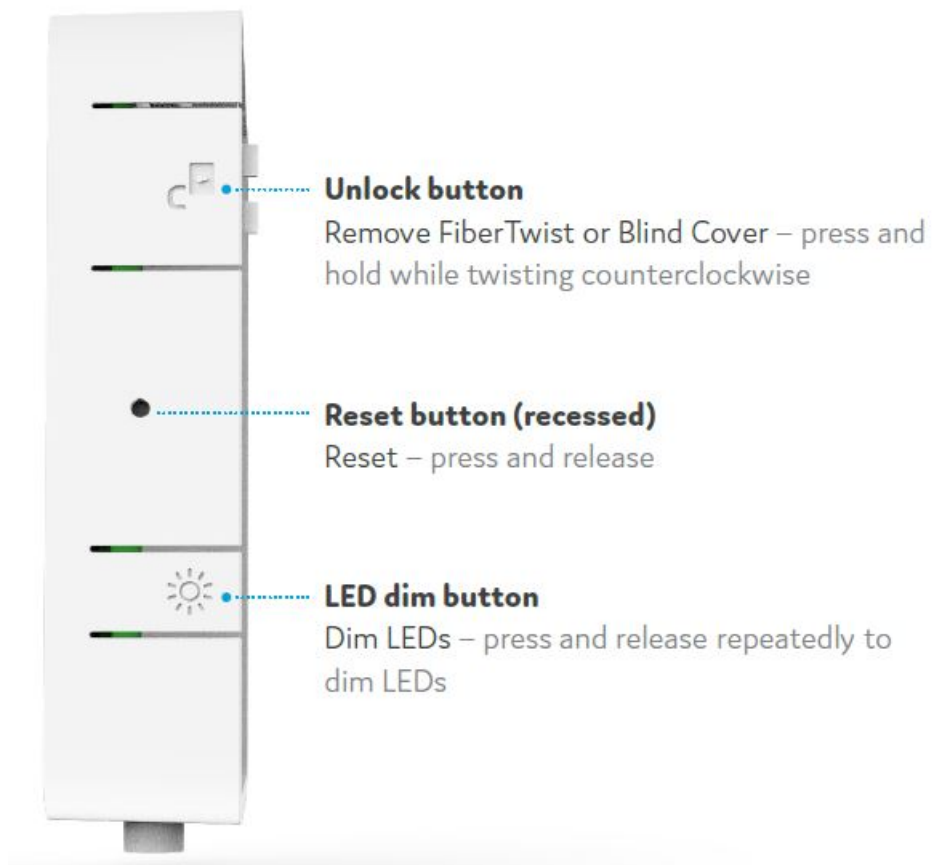
- 1 GENEXIS G2110C-2.5G FiberTwist Series
- 2 Button overview
- 3 Port overview
- 4 LED overview
- 5 Installation guide
- 6 Box contents
- 7 Preparation
  - 7.1 Connecting the FiberTwist
- 8 EU Declaration of Conformity
- 9 Documents / Resources
  - 9.1 References
- 10 Related Posts



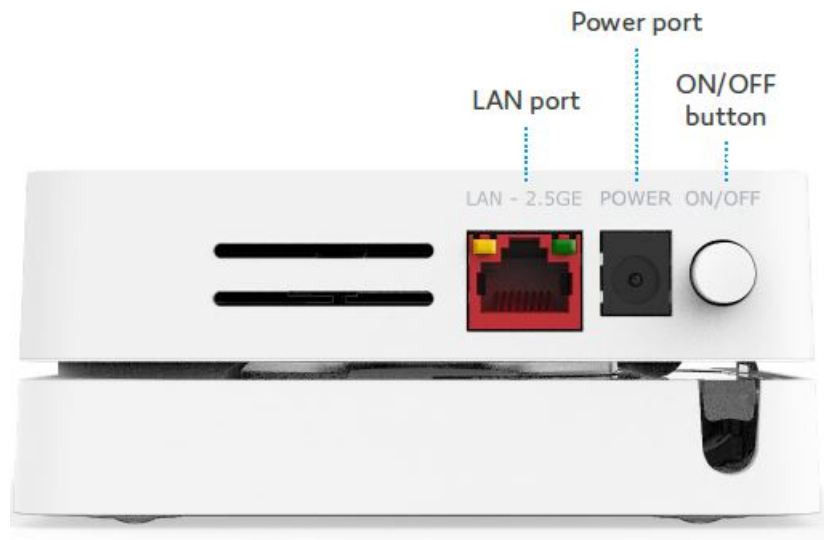
**GENEXIS G2110C-2.5G FiberTwist Series**



## Button overview



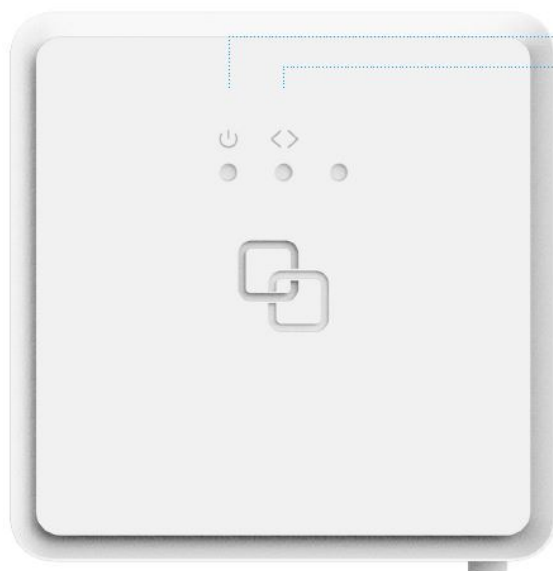
## Port overview



ON/OFF button

Power ON or OFF – press and release to switch device ON or OFF

## LED overview



### System

Green – system ok  
Green (blinking) – booting / firmware upgrade  
Red – system / booting failure  
Off – power off

### Uplink

Green – link ok  
Green (blinking) – link establishing  
Off – no link

## Installation guide

Various translations of this document (if available) and additional product information can be found on <https://genexis.eu/product/fibewist/downloads>

## Box contents

- Genexis FiberTwist (active device)
- Power adapter
- Labels (self-adhesive)

**Important:** Instructions need to be followed precisely and uninterrupted. This minimizes the risk of damage (a severe degradation of signal quality) to the fiber optic connectors.

## Label position

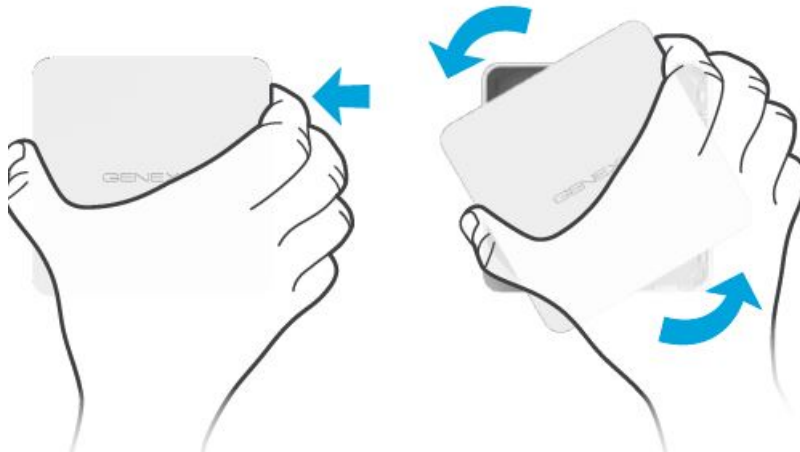
The product label is positioned on the back of the active device.

## Preparation

Ensure there is a power socket within reach of where the device is being installed.

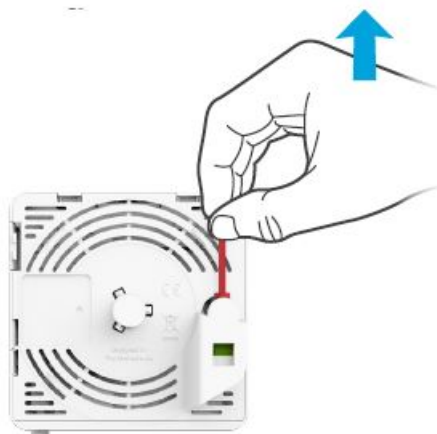
Remove Blind Cover (if present)

1. Press and hold the unlock button (see button overview).
2. Rotate the Blind Cover counterclockwise till it blocks.
3. Remove the Blind Cover from the baseplate (FTU) by pulling it towards yourself.
4. Store the Blind Cover in a safe place.



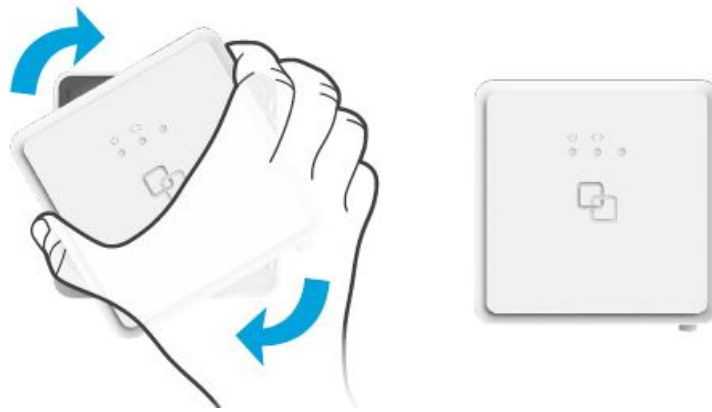
## Remove dust cap

1. Take the FiberTwist out of the box.
2. The dust cap is connected to the red string located on the rear of the FiberTwist.
3. Remove the dust cap by pulling the red string. Store the dust cap in a safe place.



## Twist!

1. Place the FiberTwist on the FTU as shown in the picture below.
  2. Rotate clockwise until it clicks into place.
  3. Make sure the FiberTwist is aligned squarely on the FTU, each edge must line up directly with the FTU below.
- Your FiberTwist is now installed!



### Connecting the FiberTwist

1. If required, connect your personal devices to the LAN ports via an RJ45 network cable.
2. Connect the supplied power adapter to the FiberTwist and plug the adapter into a power socket.
3. Press the ON/OFF button to power on the device.

If at some point in the future it becomes necessary to uninstall the FiberTwist, please place the Blind Cover back on the FTU immediately and put the dust cap back on the FiberTwist.

### Laser safety


This product contains a laser that emits invisible light. It is a Class 1 Laser Product, which means it is safe under all conditions of normal use. However, it is still advised to not look directly into the fiber connector when the product is powered on.

### EU Declaration of Conformity

Hereby, Genexis B.V. declares that the product Fiber Twist-G2110C-2.SG is in compliance with Directives 2014/30/EU, 2014/35/EU, 2011/65/EU, Delegated Directive 2015/863 and Ecodesign Directive 2009/125/EC. The full text of the EU declaration of conformity is available at the following internet address:

<https://genexis.eu/product/fibertwist/red/fibertwist-g2110c-2-5g>

### Documents / Resources

	<p><a href="#">GENEXIS G2110C-2.5G FiberTwist Series</a> [pdf] User Guide G2110C-2.5G, FiberTwist, FiberTwist Series, Series</p>
---	--

### References

- [FiberTwist | Downloads](#)
- [RED declaration | FiberTwist](#)