



GENESIS 605F Midi Tower Installation Guide

[Home](#) » [Genesis](#) » GENESIS 605F Midi Tower Installation Guide 

GENESIS 605F Midi Tower Installation Guide

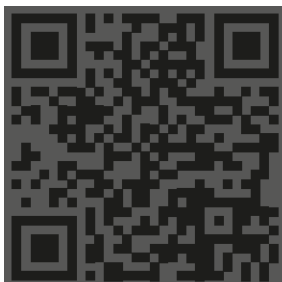


Contents

- 1 PRODUCT & SUPPORT INFORMATION
- 2 PRODUCT INFORMATION
- 3 PACKAGE CONTENT
- 4 INSTRUCTION
- 5 REGULATORY
- 6 SAFETY INFORMATION
- 7 GENERAL
- 8 Documents / Resources
 - 8.1 References
- 9 Related Posts

PRODUCT & SUPPORT INFORMATION

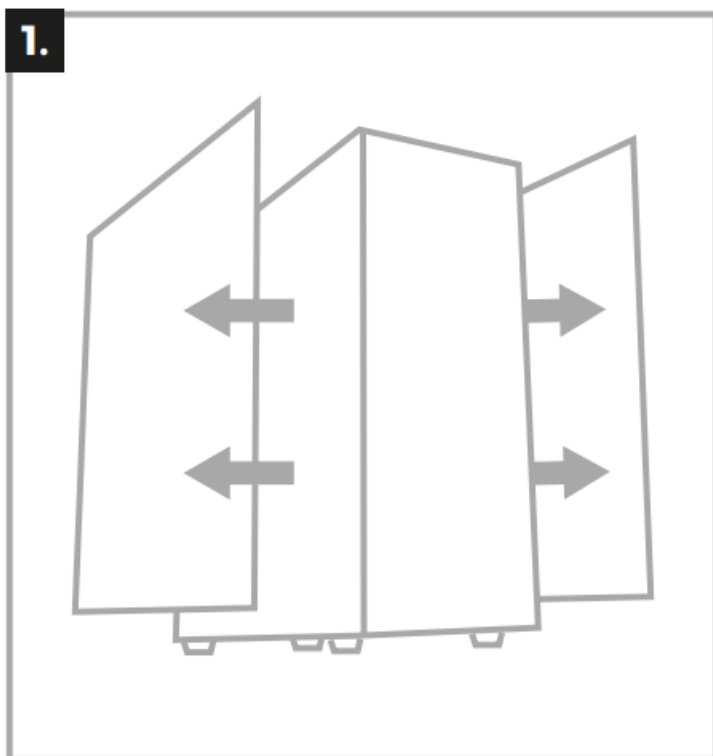
PLEASE SCAN QR CODE



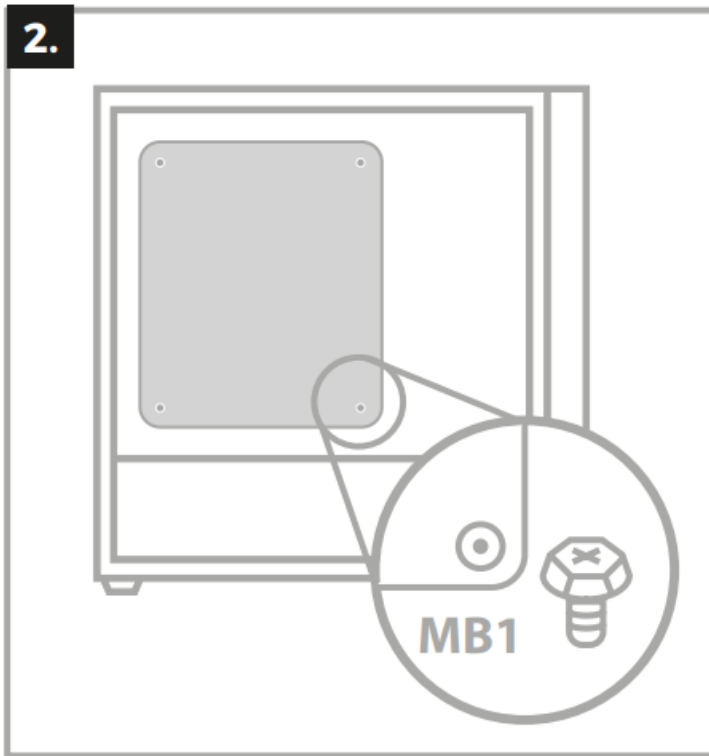
© **GENESIS**. All rights reserved. **GENESIS** name and logo, and all related product and service names, design marks and slogans are the trademarks or registered trademarks of **GENESIS**.
All other product and service marks contained herein are the trademarks of their respective owners. | V.3221

WWW.GENESIS-ZONE.COM

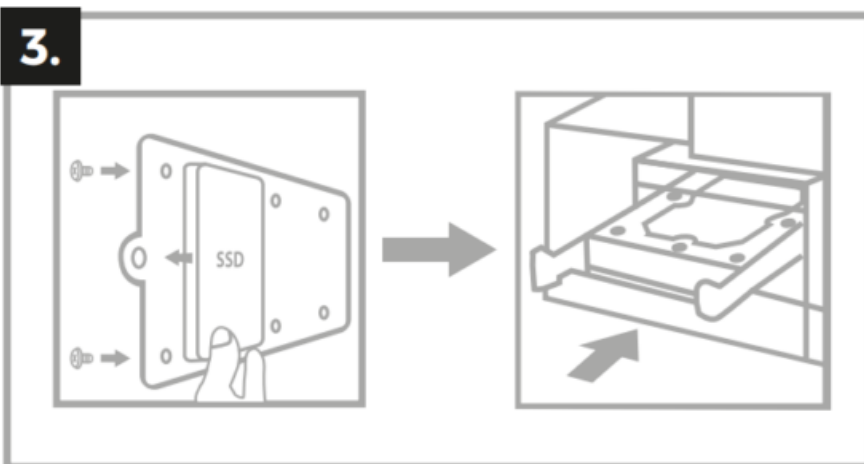
1. Unscrew and remove both side panels.



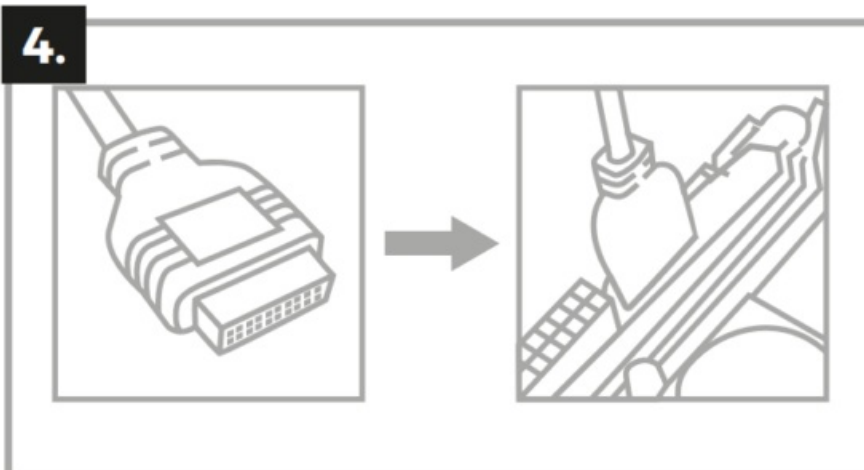
2. Screw the motherboard in using MB1 screws. If necessary, screw in additional SF-1 spacers beforehand.



3. If present, screw in the 2.5" drives (e.g. SSD) or 3.5" (HDD) using MB1 screws (for 2.5") or HD1 screws (for 3.5" HDD). You can access the HDD cage and SSD tray from the service bay side (from under the metal side panel of the case).

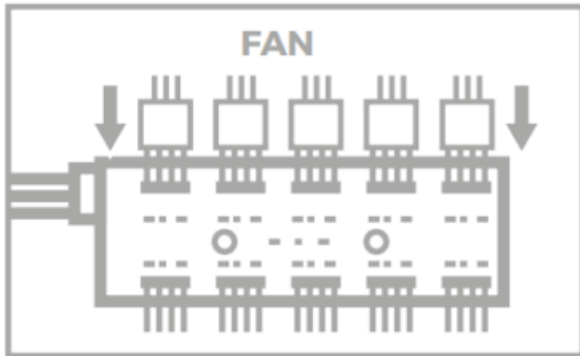
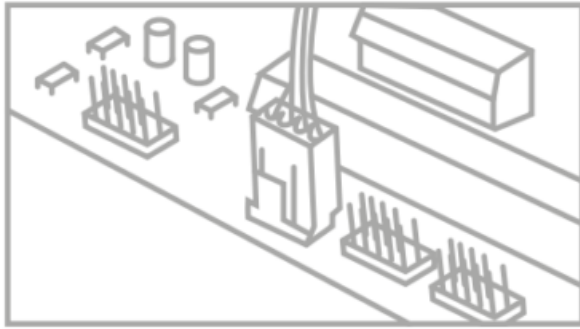


4. Connect the front panel connectors (including POWER, RESET), USB 3.0, USB 3.2 Gen 2 and HD Audio ports to the corresponding motherboard slots according to the motherboard's manual.



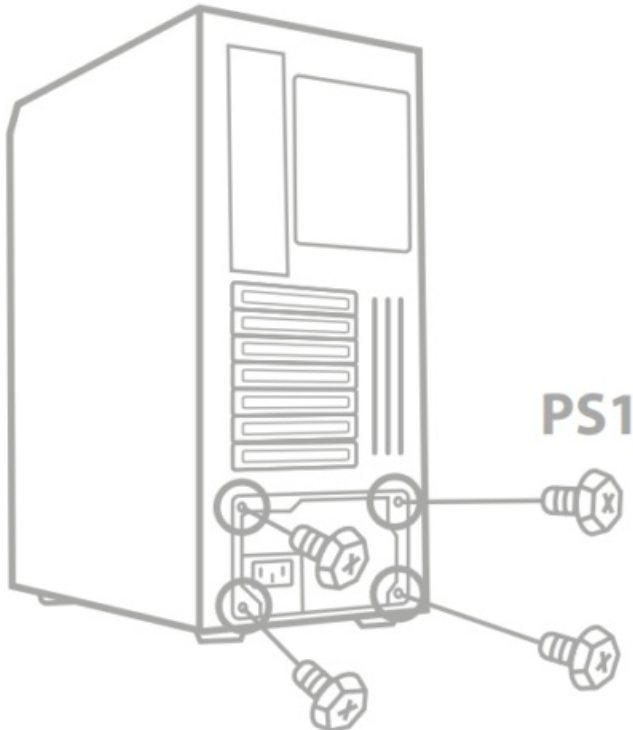
5. Connect the case fan distributor to the FAN connector on the motherboard. The speed of the fans can be controlled from the motherboard's UEFI or the included Windows application.

5.



6. Screw in the ATX power supply using PS1 screws, connect its wires according to the instructions of the power supply and the motherboard.

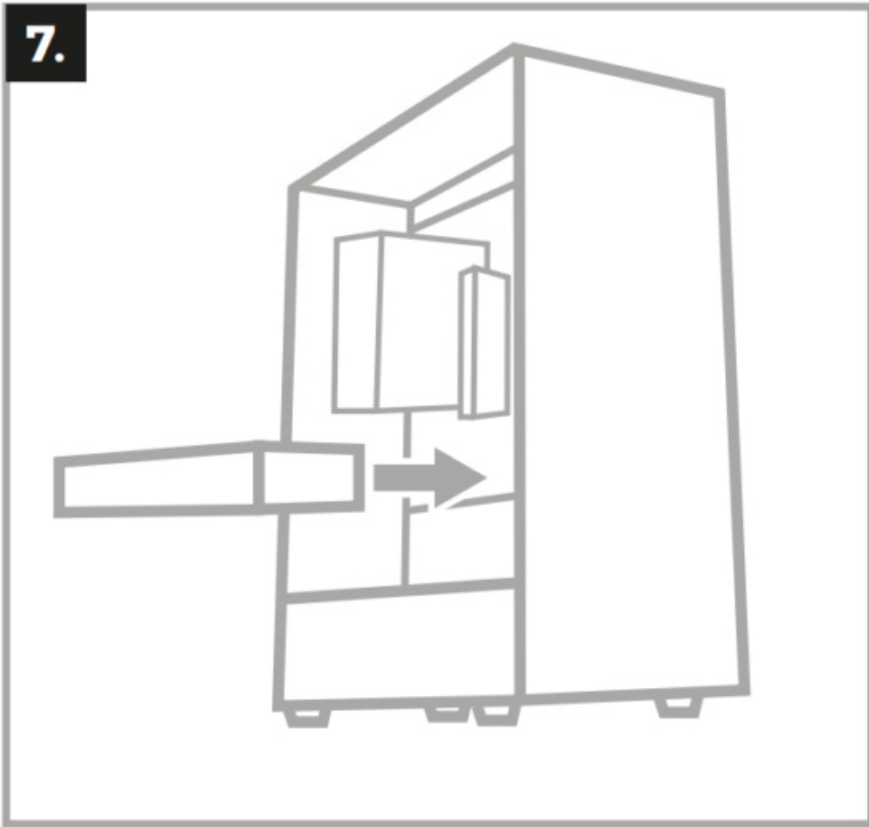
6.



7. If present, install the graphics card and connect its power cables (if the model requires them).

Note: If you need to replace the front fans or install a liquid cooling system (e.g., AIO LC), remove the front panel by pulling more firmly on the bottom part

7.



PRODUCT INFORMATION

PACKAGE CONTENT

- 1x PC case



- 5x 120 mm fan



- 3x SF1 – Screw stand-off for motherboard



- 6x PS1 – Screw for PSU



- 17x MB1 – Screw for Motherboard/SSD on HDD bracket



- 8x HD1 – Screw for HDD in bracket



- 8x Cable tie



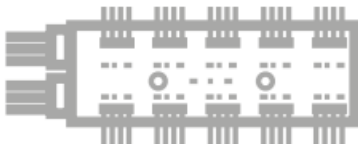
- 1x Speaker



- 1x Motherboard tray spacer screwing tool

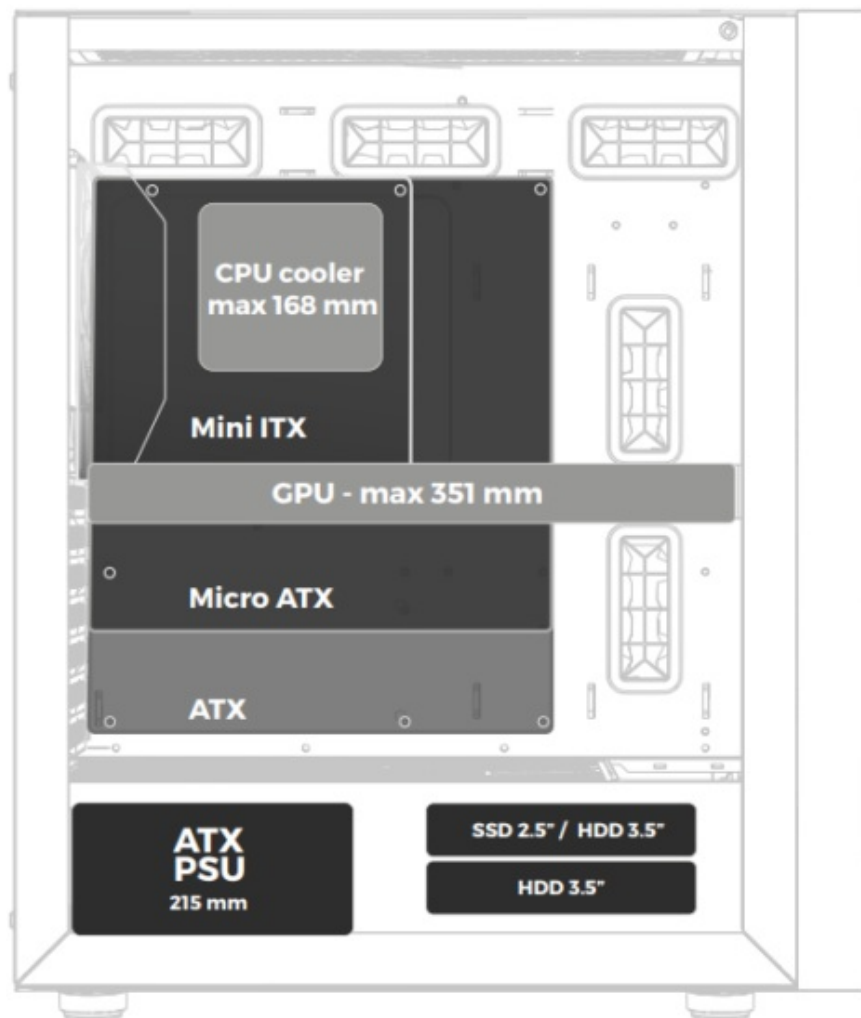


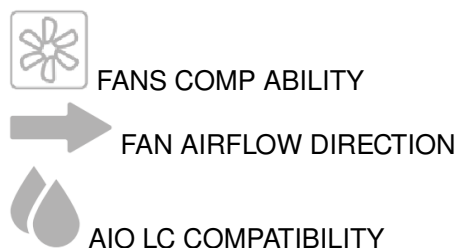
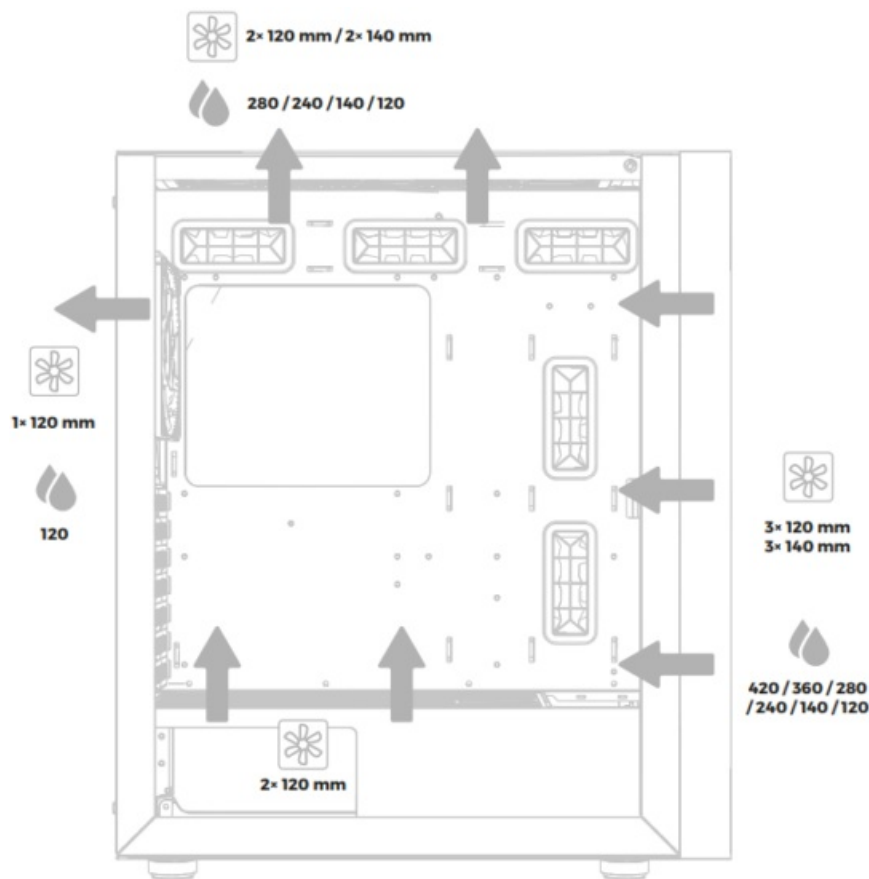
- 1x Sp litter



- 1x Installation guide

USER MANUAL





INSTRUCTION

REGULATORY

CE **EU Declaration of Conformity** – Hereby, IMPART S.A. declares that that the equipment type NPC-2046 is in compliance with Directives 2014/30/EU and 2011/65/UE. The full text of the EU declaration of conformity is available via the product tab at www.impakt.com.pl.



■ The WEEE symbol (the crossed-out wheeled bin) using indicates that this product in not home waste. Appropriate waste management aids in avoiding consequences which are harmful for people and environment and result from dangerous materials used in the device, as well as improper storage and processing. Segregated household waste collection aids recycle materials and components of which the device was made. In order to get detailed information about recycling this product please contact your retailer or a local authority.

**UK
CA** The safe product, conforming to the UKCA requirements.

SAFETY INFORMATION


- Use as intended. Improper usage may damage the device.
- Non-authorized repairs or disassembly voids the warranty and may damage the product.
- Dropping or hitting the device may lead to device being damaged, scratched or flawed in other way.
- Do not use the product in low and high temperatures, strong magnetic fields and damp or dusty surroundings.

GENERAL

- The safe product, conforming to the EU requirements.
- The product is made in accordance with RoHS European standard.
- 2 years limited manufacturer warranty



Documents / Resources

	GENESIS 605F Midi Tower [pdf] Installation Guide 605F Midi Tower, 605F, Midi Tower, Tower
---	--

References

- [📄 Producent i dystrybutor sprzętu IT | IMPAKT S.A.](#)
- [User Manual](#)

[Manuals+](#), [Privacy Policy](#)

This website is an independent publication and is neither affiliated with nor endorsed by any of the trademark owners. The "Bluetooth®" word mark and logos are registered trademarks owned by Bluetooth SIG, Inc. The "Wi-Fi®" word mark and logos are registered trademarks owned by the Wi-Fi Alliance. Any use of these marks on this website does not imply any affiliation with or endorsement.