

GENESIS 303TKL Thor TKL Silent Switch



GENESIS 303TKL Thor TKL Silent Switch User Manual

[Home](#) » [Genesis](#) » GENESIS 303TKL Thor TKL Silent Switch User Manual 

Contents

- [1 GENESIS 303TKL Thor TKL Silent Switch](#)
- [2 Product Information](#)
- [3 Product Usage Instructions:](#)
- [4 PRODUCT INFORMATION](#)
- [5 INSTALLATION](#)
- [6 Documents / Resources](#)
 - [6.1 References](#)
- [7 Related Posts](#)



GENESIS 303TKL Thor TKL Silent Switch



Specifications:

- **Brand:** Genesis
- **Model:** THOR 303TKL
- **Interface:** USB
- **Backlight:** RGB
- **Key Functions:** Arrow keys, W, A, S, D

Product Information

The Genesis THOR 303TKL is a compact gaming keyboard designed for gamers who value performance and aesthetics. With customizable RGB backlighting and programmable key functions, this keyboard offers a personalized gaming experience.

Product Usage Instructions:

Arrow Function Change:

To swap arrow function with W, A, S, D keys function, press FN + W.

Backlight Brightness:

To change the backlight brightness level, press keys FN + Arrow Up/Down.

Speed of Backlight Effects:

To change the speed of backlight effects, press keys FN + Arrow Left/Right.

Backlight Color Change:

To change the backlight color, press the keys FN + Del.

Backlight Mode Change:

To change between 20 backlight modes, press the keys FN + INS.

Game Backlight Mode:

To change between 5 game backlight modes, press the keys FN + 1-5.

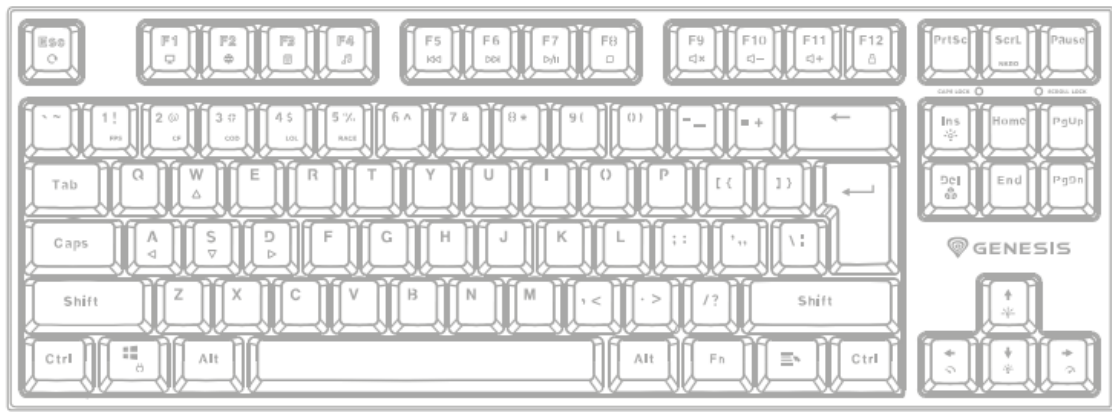
Restore Factory Settings:

All saved settings can be easily restored to default settings by pressing the keys [FN+ESC]. To restore factory settings, hold the keys [FN+ESC] for 5 seconds.

FAQ:

- **Q: What should I do if a key switch does not work after replacement?**
 - **A:** Check if the legs of the switch are installed correctly in the holes on the PCB board or if they have been bent.

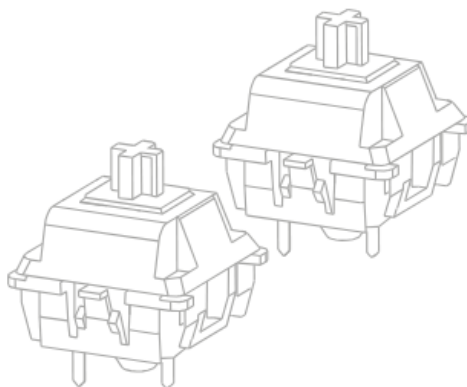
PRODUCT INFORMATION**PACKAGE CONTENT**



a)



b)



c)



d)

REQUIREMENTS

PC or compatible device with a USB port

INSTALLATION

- Connect the cable to a free USB port on your computer, it is necessary to wait about 15 seconds for the first connection until the drivers are fully installed.
- The keyboard includes software that allows you to set up advanced features, if you want to use these features, you need to download and install the software from our website www.genesis-zone.com
- Open the installation folder and then double-click the setup.exe file.
- Follow the instructions to install the program.
- After a successful installation, the software icon appears on the main bottom panel. Double-clicking the icon opens the settings interface.

1. REPLACING SWITCHES

- Disconnect the keyboard from the power source
- Remove the key cap by pulling up vertically

- Install a metal clamp under the switch body in place showed on the figure
- Push the clamp arms to the switch body and simultaneously pull up vertically
- Insert vertically replacement switch into the holes on the PCB board and gently push down
- Insert the key cap and connect the keyboard to the computer
- **Note:** If the switch does not work after replacement, check if the legs of switch are installed correctly in the holes on the PCB board or have not been bent.

2. **ARROW FUNCTION CHANGE**

- Press FN + W to swap arrow function with W, A, S, D keys function.

3. **BACKLIGHT BRIGHTNESS**

- To change the backlight brightness level press keys FN + Arrow Up/Down.

4. **SPEED OF BACKLIGHT EFFECTS**

- To change the speed of backlight effects press keys FN + Arrow Left/Right

5. **BACKLIGHT COLOR CHANGE**

- To change the backlight color, press keys FN + Del

6. **BACKLIGHT MODE CHANGE**

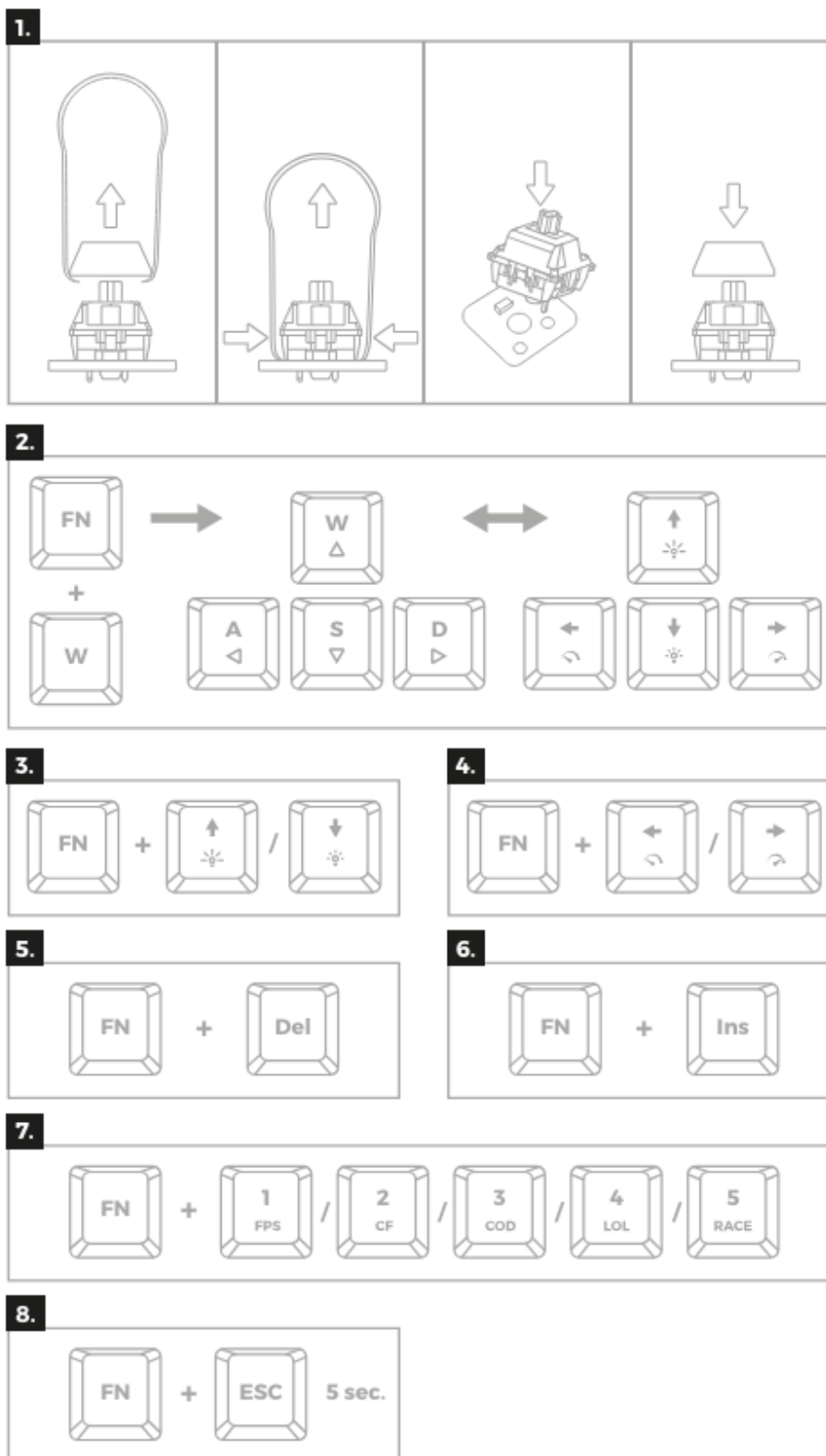
- Press the keys FN + INS to change between 20 backlight modes.

7. **GAME BACKLIGHT MODE**

- Press the keys FN + 1-5 to change between 5 game backlight modes.

8. **RESTORE FACTORY SETTINGS**

- All saved settings can be easily restored to default settings by pressing the keys [FN+ESC].
- To restore factory settings, hold the keys [FN+ESC] for 5 seconds



REGULATORY

EU Declaration of Conformity – Hereby, IMPAKT S.A. declares that that the equipment type NKG-1862, NKG-1864, NKG-1866, NKG-1882, NKG-1877, NKG-1883, NKG-1884, NKG-1885, NKG-1886 are in compliance with Directives 2014/30/EU, 2011/65/EU and 2015/863/EU. The full text of the EU declaration of conformity is available via the product tab at www.impakt.com.pl.

The WEEE symbol (the crossed-out wheeled bin) usage indicates that this product is not a household waste. Appropriate waste management aids in avoiding consequences, that are harmful for people and the environment and result from dangerous materials used in the device, as well as, improper storage and processing of such equipment. Segregated household waste collection allows the recycling of materials and components of which the device was made of. In order to get detailed information about recycling of this particular product, please contact

your retailer or a local authority.

The safe product conforms to the UKCA requirements.

SAFETY INFORMATION

- Use as intended, improper usage may break the device.
- Non-authorized repairs or disassembly voids the warranty and may damage the product.
- Dropping or hitting the device may lead to the device being damaged, scratched or flawed in another way
- Do not use the product in low and high temperatures, strong magnetic fields and damp or dusty surroundings.

GENERAL

- The safe product conforms to the EU requirements.
- The product is made in accordance with RoHS European standards.
- 2 years limited manufacturer warranty

DOWNLOAD SOFTWARE ON OUR WEBSITE



www.denesis-zone.com/support

CONTACT ME ON



WWW.GENESIS-ZONE.COM/CONTACT

© GENESIS. All rights reserved. GENESIS name and logo, and all related product and service names, design marks and slogans are the trademarks or registered trademarks of GENESIS. All other product and service marks contained herein

PRODUCT & SUPPORT INFORMATION

© GENESIS. All rights reserved. GENESIS name and logo, and all related product and service names, design marks and slogans are the trademarks or registered trademarks of GENESIS. All other product and service marks contained herein are the trademarks of their respective owners. | V.2240


WWW.GENESIS-ZONE.COM

PLEASE SCAN QR CODE



WWW.GENESIS-ZONE.COM

Documents / Resources

	GENESIS 303TKL Thor TKL Silent Switch [pdf] User Manual 303TKL Thor TKL Silent Switch, 303TKL, Thor TKL Silent Switch, Silent Switch, Switch
---	---

References

- [📄 Producent i dystrybutor sprzętu IT | IMPAKT S.A.](#)
- [📄 Producent i dystrybutor sprzętu IT | IMPAKT S.A.](#)
- [🎮 MSN Games](#)
- [User Manual](#)

[Manuals+](#), [Privacy Policy](#)

This website is an independent publication and is neither affiliated with nor endorsed by any of the trademark owners. The "Bluetooth®" word mark and logos are registered trademarks owned by Bluetooth SIG, Inc. The "Wi-Fi®" word mark and logos are registered trademarks owned by the Wi-Fi Alliance. Any use of these marks on this website does not imply any affiliation with or endorsement.