

GENESIS 230TKL Lite Thor Keyboard



GENESIS 230TKL Lite Thor Keyboard Installation Guide

[Home](#) » [Genesis](#) » GENESIS 230TKL Lite Thor Keyboard Installation Guide 

Contents

- [1 GENESIS 230TKL Lite Thor Keyboard](#)
- [2 PRODUCT INFORMATION](#)
- [3 INSTALLATION](#)
- [4 REGULATORY](#)
- [5 SAFETY INFORMATION](#)
- [6 Documents / Resources](#)
 - [6.1 References](#)
- [7 Related Posts](#)



GENESIS

GENESIS 230TKL Lite Thor Keyboard

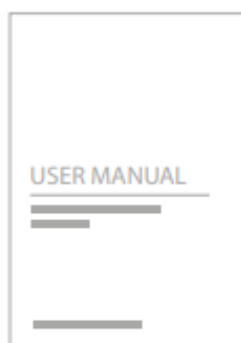


GENESIS. All rights reserved. GENESIS name and logo, and all related product and service names, design marks, and slogans are the trademarks or registered trademarks of GENESIS. All other product and service marks contained herein are the trademarks of their respective owners.

PRODUCT INFORMATION



a)



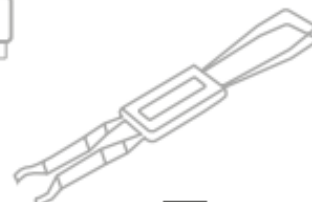
b)



c)



d)



e)

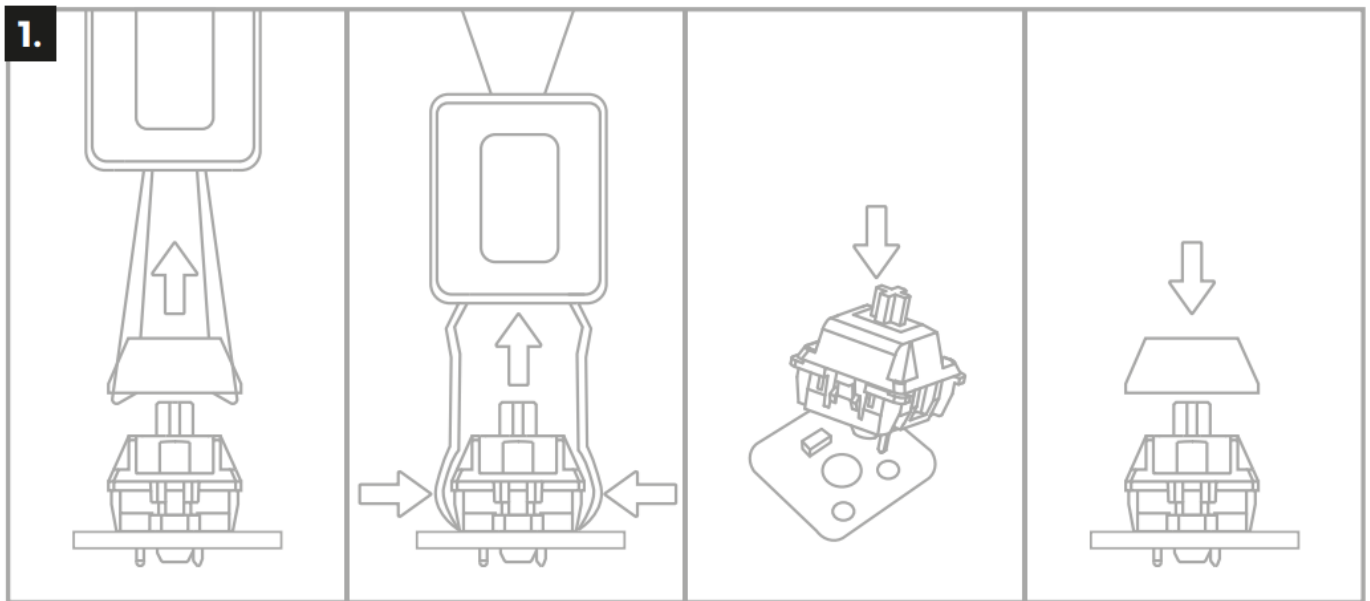
REQUIREMENTS

- PC or compatible device with a USB port
- Windows® 7/8/10/11, Android

INSTALLATION

- Connect the cable to a free USB port on your computer, it is necessary to wait about 15 seconds for the first connection until the drivers are fully installed.
- The keyboard includes software that allows you to set up advanced features, if you want to use these features, you need to download and install the software from our website www.genesis-zone.com
- Open the installation folder and then double-click the setup.exe file.
- Follow the instructions to install the program.
- After a successful installation, the software icon appears on the main bottom panel. Double-clicking the icon opens the settings interface.

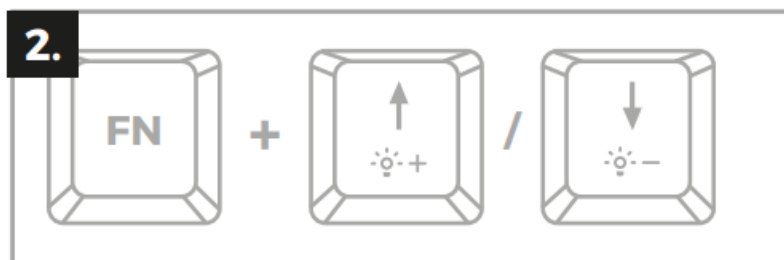
REPLACING SWITCHES



- Remove the keycap by pulling it up vertically
- Install a metal clamp under the switch body in place showed on the figure
- Push the clamp arms to the switch body and simultaneously pull up vertically
- Insert vertically replacement switch into the holes on the PCB board and gently push down
- Insert the keycap and connect the keyboard to the computer

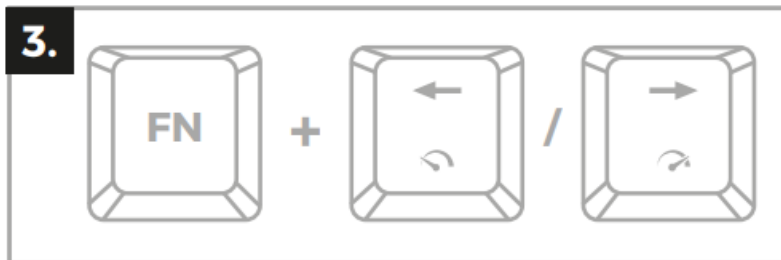
Note: If the switch does not work after replacement, check if the legs of the switch are installed correctly in the holes on the PCB board or have not been bent.

BACKLIGHT BRIGHTNESS



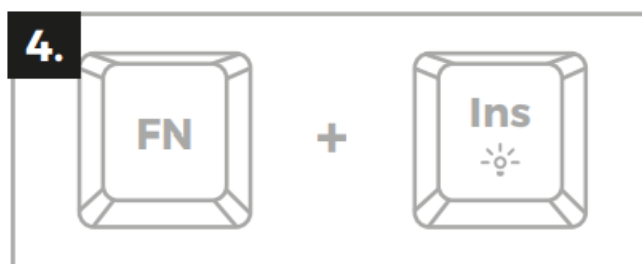
To change the backlight brightness level press keys Fn + Arrow Up/Down.

SPEED OF BACKLIGHT EFFECTS



To change the speed of backlight effects, press keys Fn + Arrow Left/Right

BACKLIGHT MODE CHANGE



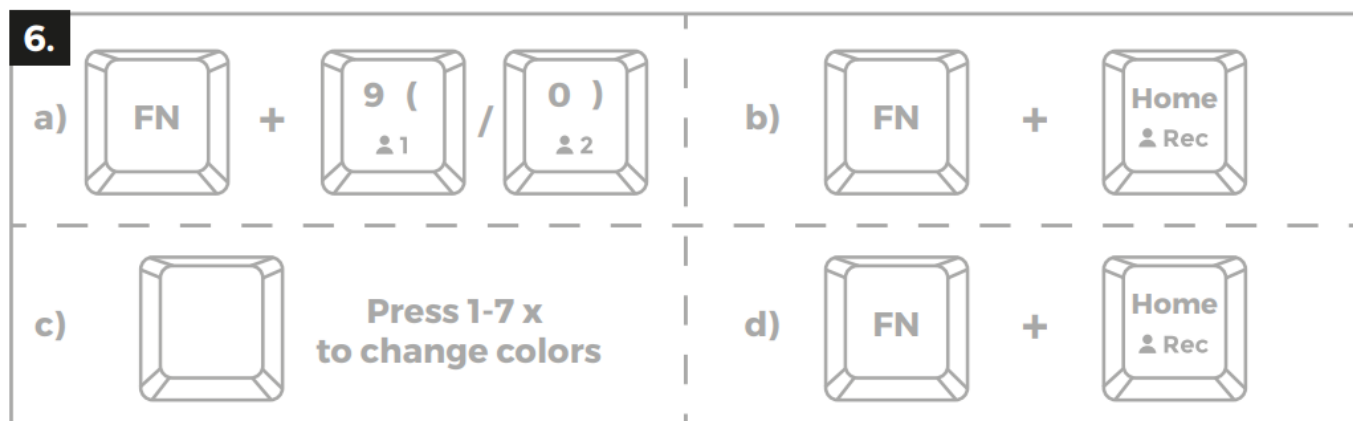
Press the keys Fn + Ins to change between 20 backlight modes.

GAME BACKLIGHT MODE



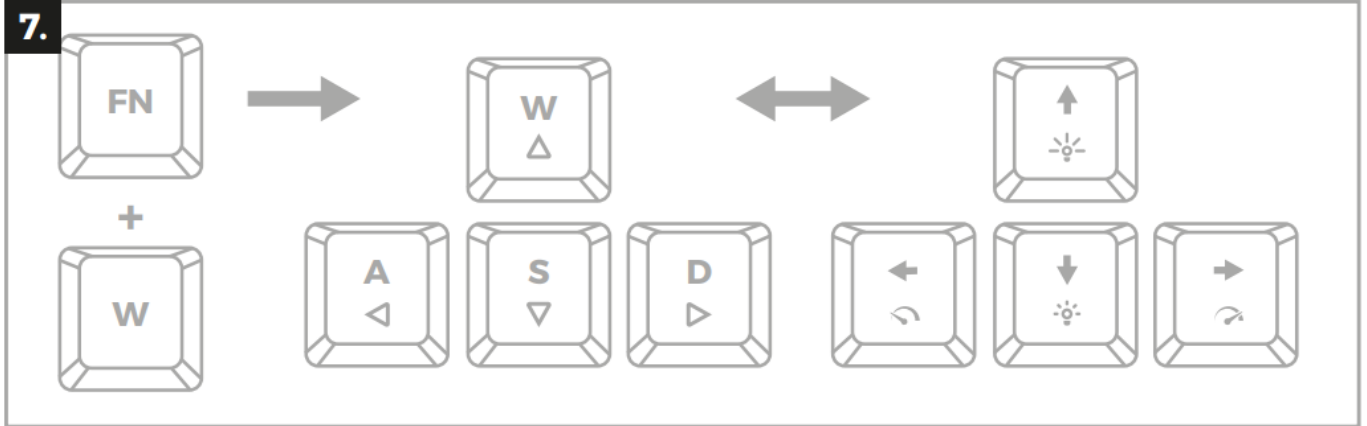
Press the keys Fn + 1/2/3 to change between 3 game backlight modes.

CUSTOM BACKLIGHT MODE



- Custom mode allows to set the individual illumination of each key.
- Select 1 of 2 available custom modes by pressing Fn + 9/0
- Press Fn + Home to start recording. Led indicator will start flashing
- Press any keys you want to backlight (for each key you can choose 1 of 7 predefined colors by pressing same key in loop)
- Press Fn + Home to finish recording and save settings. Led indicator will stop flashing

ARROW FUNCTION CHANGE



Press the keys FN + W to swap the arrow function with the W, A, S, and D keys functions.

RESTORE FACTORY SETTINGS



All saved settings can be easily restored to default settings by pressing the keys [FN+ESC]. To restore factory settings, hold the keys [FN+ESC] for 5 seconds.

- www.genesis-zone.com/support



REGULATORY

EU Declaration of Conformity

Hereby, IMPAKT S.A. declares that the equipment type NKG-2076 complies with Directives 2014/30/EU, 2011/65/EU, and 2015/863/EU. The full text of the EU Declaration of Conformity is available via the product tab at www.genesis-zone.com. The WEEE symbol (the crossed-out wheeled bin) usage indicates that this product is not a household waste. Appropriate waste management aids in avoiding consequences, that are harmful for people and the environment and result from dangerous materials used in the device, as well as, improper storage and processing of such equipment. Segregated household waste collection allows the recycling of materials and components of which the device was made of. To get detailed information about recycling this particular product, please contact your retailer or a local authority. The safe product, conforming to the UKCA requirements.

SAFETY INFORMATION

- Use as intended, improper usage may break the device.
- Non-authorized repairs or disassembly voids the warranty and may damage the product.

- Dropping or hitting the device may lead to device being damaged, scratched or flawed in other way.
- Do not use the product in low and high temperatures, strong magnetic fields and damp or dusty surroundings.

GENERAL

- The safe product conforms to the EU requirements.
- The product is made per RoHS European standards.
- 2 years limited manufacturer warranty



CONTACT ME ON

- WWW.GENESIS-ZONE.COM/CONTACT



Documents / Resources



[GENESIS 230TKL Lite Thor Keyboard](#) [pdf] Installation Guide
230TKL Lite Thor Keyboard, 230TKL, Lite Thor Keyboard, Thor Keyboard, Keyboard

References

- [📍 Genesis | Complete solutions for gamers - mice, keyboards, headphones and other devices](#)
- [📍 Genesis | Complete solutions for gamers - mice, keyboards, headphones and other devices](#)
- [📍 Support | Genesis](#)
- [🌐 MSN Games](#)
- [User Manual](#)

[Manuals+.](#) [Privacy Policy](#)

This website is an independent publication and is neither affiliated with nor endorsed by any of the trademark owners. The "Bluetooth®" word mark and logos are registered trademarks owned by Bluetooth SIG, Inc. The "Wi-Fi®" word mark and logos are registered trademarks owned by the Wi-Fi Alliance. Any use of these marks on this website does not imply any affiliation with or endorsement.