



[Home](#) » [Genesis](#) » **230 TKL Keyboard Genesis Gaming Installation Guide** 



WELCOME TO #GENESISGAMING

THOR 230TKL LITE

QUICK INSTALLATION GUIDE

Contents [[hide](#)]

[1 230 TKL Keyboard Genesis Gaming](#)

[2 PRODUCT INFORMATION](#)

[3 INSTALLATION](#)

[4 REGULATORY](#)

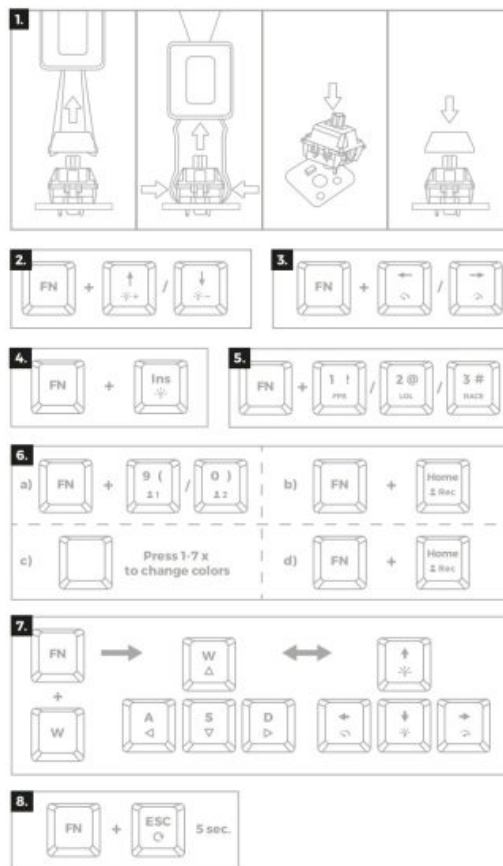
[5 Documents / Resources](#)

[5.1 References](#)

230 TKL Keyboard Genesis Gaming



<http://www.genesis-zone.com/shop>



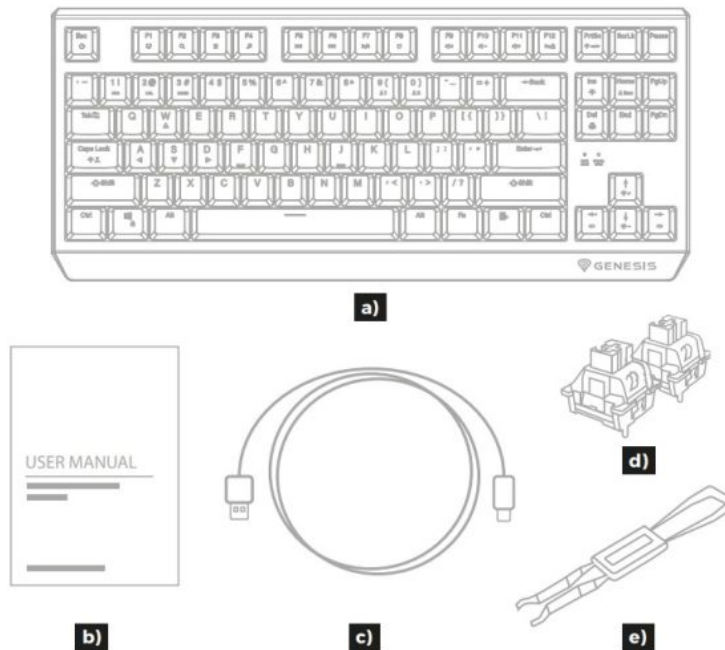
DOWNLOAD SOFTWARE ON OUR WEBSITE

www.genesis-zone.com/support



PRODUCT INFORMATION

PACKAGE CONTENT



REQUIREMENTS

PC or compatible device with a USB port

INSTALLATION

- Connect the cable to a free USB port on your computer, it is necessary to wait about 15 seconds for the first connection until the drivers are fully installed.
- The keyboard includes software that allows you to set up advanced features, if you want to use these features, you need to download and install the software from our website www.genesis-zone.com
- Open the installation folder and then double-click the setup.exe file.
- Follow the instruction to install the program.
- After a successful installation, the software icon appears on the main bottom panel. Double-clicking the icon opens the settings interface.

1. REPLACING SWITCHES

- Remove the keycap by pulling up vertically
- Install a metal clamp under the switch body in place showed on the figure
- Push the clamp arms to the switch body and simultaneously pull up vertically
- Insert vertically replacement switch into the holes on the PCB board and gently push down
- Insert the keycap and connect the keyboard to the computer

Note: If the switch does not work after replacement, check if the legs of switch are installed correctly in the holes on the PCB board or have not been bent.

2. BACKLIGHT BRIGHTNESS

To change the backlight brightness level press keys Fn + Arrow Up/Down.

3. SPEED OF BACKLIGHT EFFECTS

To change the speed of backlight effects, press keys Fn + Arrow Left/Right

4. BACKLIGHT MODE CHANGE

Press the keys Fn + Ins to change between 20 backlight modes.

5. GAME BACKLIGHT MODE

Press the keys Fn + 1/2/3 to change between 3 game backlight modes.

6. CUSTOM BACKLIGHT MODE

- Custom mode allows to set the individual illumination of each key.
- Select 1 of 2 available custom modes by pressing Fn + 9/0
- Press Fn + Home to start recording. Led indicator will start flashing
- Press any keys you want to backlight (for each key you can choose 1 of 7 predefined colors by pressing same key in loop)
- Press Fn + Home to finish recording and save settings. Led indicator will stop flashing

7. ARROW FUNCTION CHANGE

Press the keys FN + W for to swap arrow function with W, A, S, D keys function.

8. RESTORE FACTORY SETTINGS

All saved settings can be easy restored to default settings by pressing the keys [FN+ESC].

To restore factory settings, hold the keys [FN+ESC] for 5 seconds.

REGULATORY

CE EU Declaration of Conformity – Hereby, IMPAKT S.A. declares that that the equipment type NKG-2076 are in compliance with Directives 2014/30/EU, 2011/65/EU and 2015/863/EU. The full text of the EU declaration of conformity is available via the product tab at www.genesis-zone.com.



The WEEE symbol (the crossed-out wheeled bin) usage indicates that this product is not a household waste. Appropriate waste management aids in avoiding consequences, which are harmful for people and environment and result from dangerous materials used in the device, as well as, improper storage and processing of such equipment. Segregated household waste collection allows recycling of materials and components of

which the device was made of. In order to get detailed information about recycling of this particular product, please contact your retailer or a local authority.



The safe product, conforming to the UKCA requirements.

SAFETY INFORMATION

- Use as intended, improper usage may break the device.
- Non-authorized repairs or disassembly voids the warranty and may damage the product.
- Dropping or hitting the device may lead to device being damaged, scratched or flawed in other way.
- Do not use the product in low and high temperatures, strong magnetic fields and damp or dusty surroundings.

GENERAL

- The safe product, conforming to the EU requirements.
- The product is made in accordance with RoHS European standard.
- 2 years limited manufacturer warranty



WWW.GENESIS-ZONE.COM/CONTACT

PRODUCT & SUPPORT

INFORMATION | PLEASE SCAN QR CODE |


© GENESIS. All rights reserved. GENESIS name and logo, and all related product and

service names, design marks and slogans are the trademarks or registered trademarks of GENESIS.

All other product and service marks contained herein are the trademarks of their respective owners. | V.2520





Documents / Resources

	GENESIS 230 TKL Keyboard Genesis Gaming [pdf] Installation Guide 230 TKL Keyboard Genesis Gaming, 230 TKL, Keyboard Genesis Gaming, Genesis Gaming
---	---

References

- [MSN Games](#)
- [User Manual](#)

 230 TKL, 230 TKL Keyboard Genesis Gaming, Genesis, Genesis Gaming, Keyboard Genesis

 Genesis Gaming

[—Previous Post](#)

[GENESIS GV80 Coupe Slicks Back Its Roof Owner’s Manual](#)

[Next Post—](#)

[GENESIS 5 Year Care Plan Owner’s Manual](#)

Leave a comment

Your email address will not be published. Required fields are marked *

Comment *

Name

Email

Website

☐ Save my name, email, and website in this browser for the next time I comment.

Post Comment

[Manuals+](#), [Privacy Policy](#) | [@manuals.plus](#) | [YouTube](#)

This website is an independent publication and is neither affiliated with nor endorsed by any of the trademark owners. The "Bluetooth®" word mark and logos are registered trademarks owned by Bluetooth SIG, Inc. The "Wi-Fi®" word mark and logos are registered trademarks owned by the Wi-Fi Alliance. Any use of these marks on this website does not imply any affiliation with or endorsement.