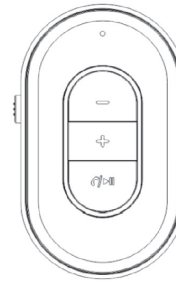


generic  
BT02 Stereo Smart  
4.0 Bluetooth Audio  
Receiver



# Generic BT02 Stereo Smart 4.0 Bluetooth Audio Receiver User Manual

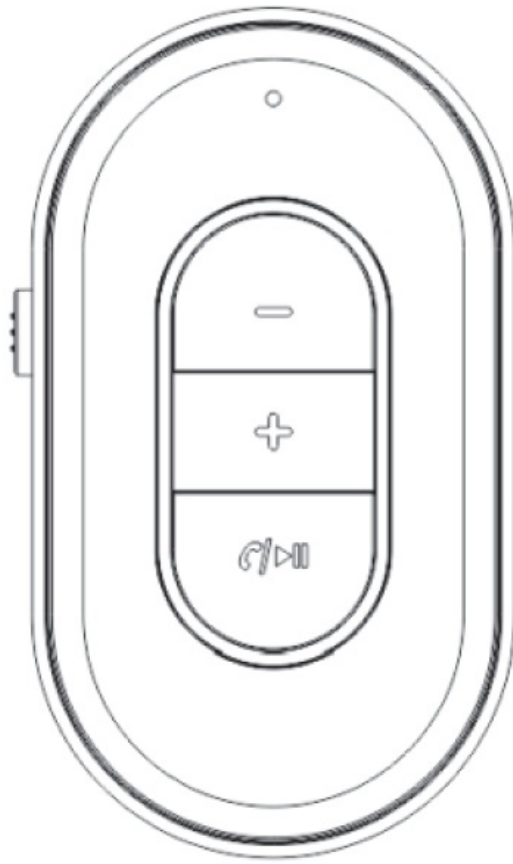
[Home](#) » [Generic](#) » Generic BT02 Stereo Smart 4.0 Bluetooth Audio Receiver User Manual 

## Contents

- [1 Generic BT02 Stereo Smart 4.0 Bluetooth Audio Receiver](#)
- [2 Charge the device](#)
- [3 Pair with your Bluetooth-enabled devices](#)
- [4 Paired with the second Bluetooth-enabled device](#)
- [5 Operations](#)
- [6 Specification](#)
- [7 Package Content](#)
- [8 Trouble Shooting](#)
- [9 Documents / Resources](#)
  - [9.1 References](#)

generic

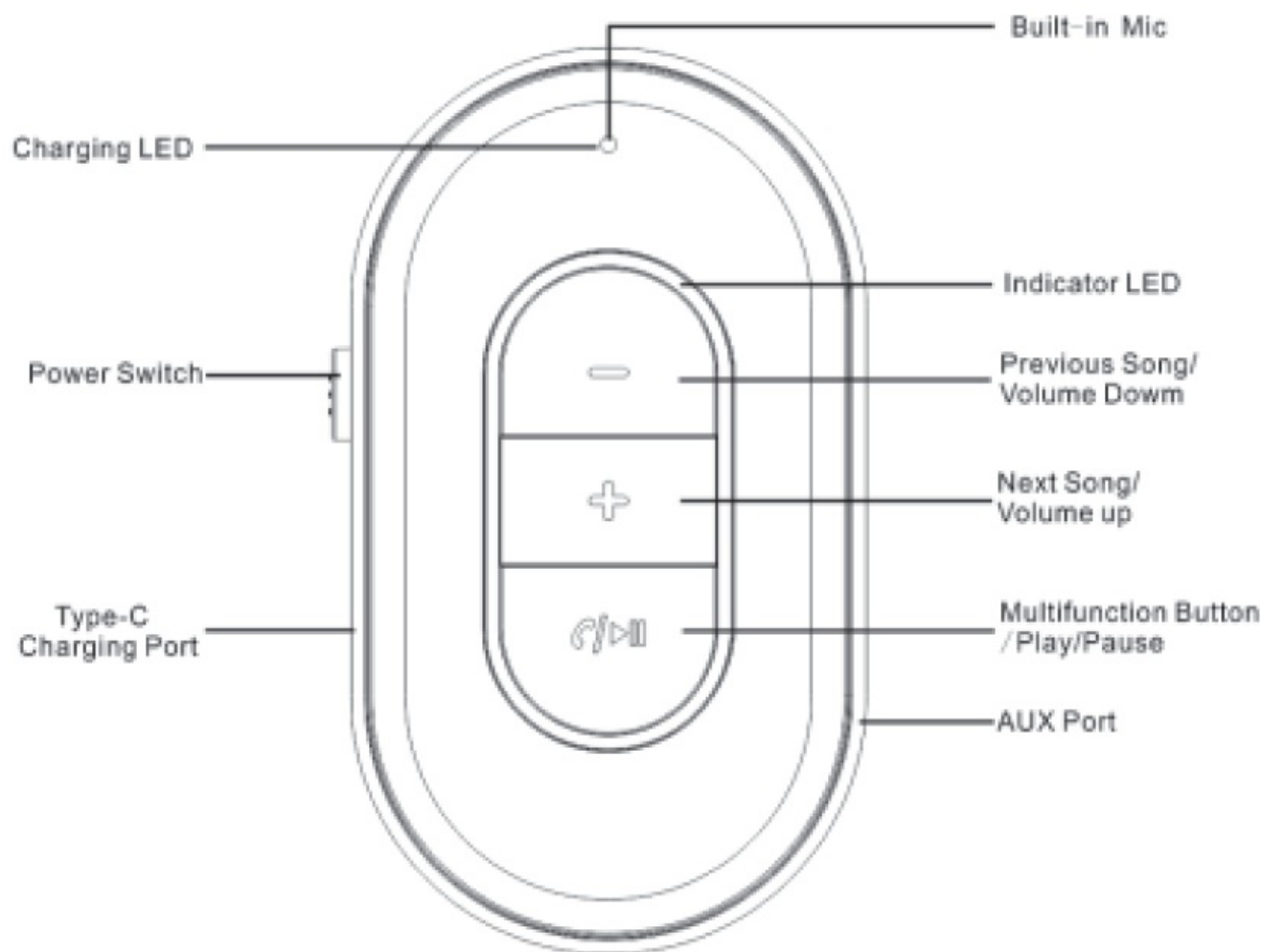
**Generic BT02 Stereo Smart 4.0 Bluetooth Audio Receiver**



### **Charge the device**

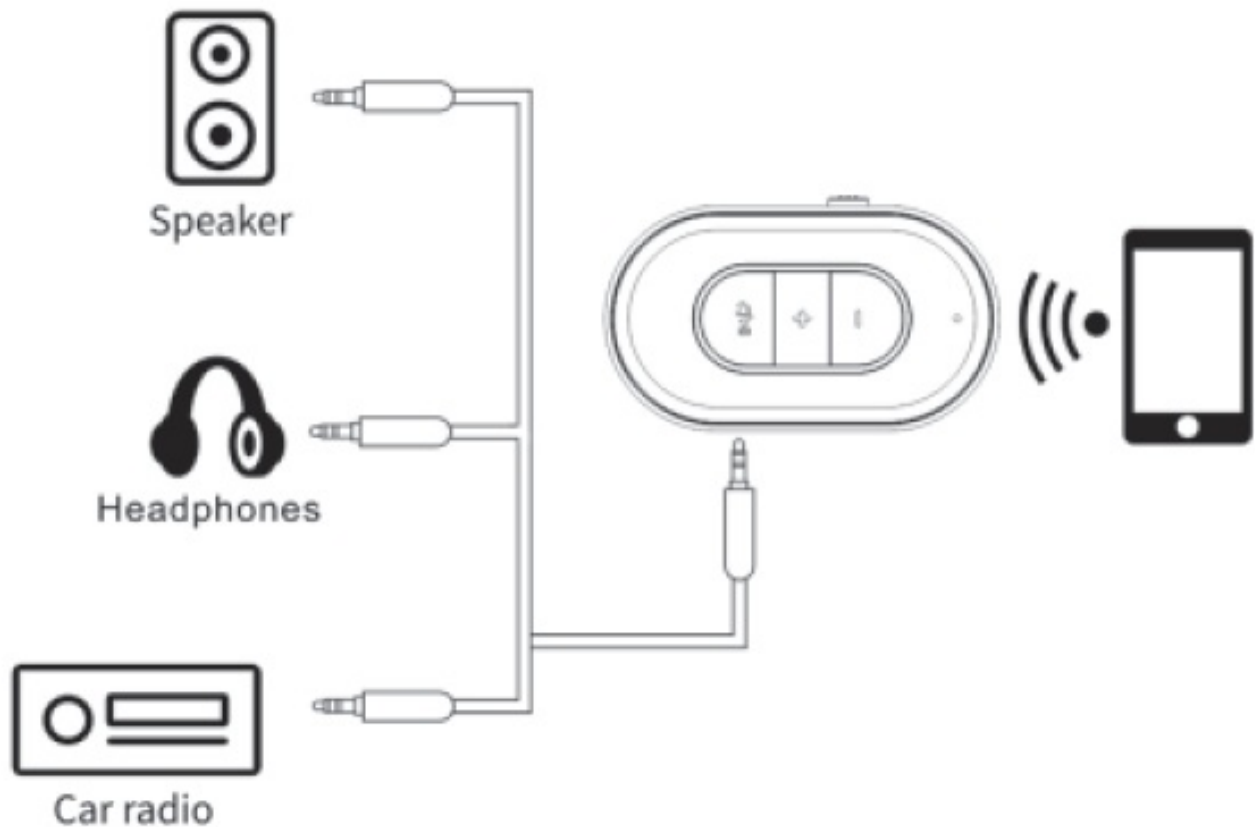
1. Please charge fully the product before first use the Charging light will stay red during charging and turn off when finished.
2. When the device is in low power state the indicator light will flash blue quickly, please charge with DC 5v power supply. (Do not use power supply higher than 5V)

**Note:** Charge the adapter every 3 months at least when not using for a long time.



### **Pair with your Bluetooth-enabled devices**

1. Put the power switch to ON and will into the pairing mode automatically, the blue light will flash quickly.
2. Turn on the Bluetooth on your Bluetooth device, search "BTO2" and connect. The indicator LED will flash slowly when connected
3. Plug the receiver to the aux port of your device like headphone/home speaker or car stereo system with provided 3.5mm audio cable, or plug your old 3.5mm wired earphone into the device.



4. Now you can enjoy music wirelessly or answer hands-free calls.

### Paired with the second Bluetooth-enabled device

1. After paired with the first device, turn off the Bluetooth function of the first device, and the receiver will enter into the pairing mode again.
2. Turn on the Bluetooth function of the second device, search for "BTO2" and connect.
3. Turn on the Bluetooth function of the first device, select "BTO2" in your pairing history and connect.
4. Now two device have connected to the receiver at the same time.

### Operations

- **Power on/off** Put the power switch ON/OFF
- **Play/Pause/Answer/Hand up** Press the Multi-function Button once
- **Reject a call** Long press the "MFB"
- **Redial the last number** Double-click the "MFB"
- **Volume Up/Down** Long press "+" or "-" Button
- **Next/Previous song** Short press "+" or "-" Button
- **Siri activation** Long press the "MFB"

### Auto Connection

This Bluetooth Receiver will pair with the last connected device when turn on next time.

### Auto Power Off

The product will power off automatically if not paired with any device in 10 minutes.

### Specification

- Bluetooth Version: 5.3
- Bluetooth: HFP / HSP / A2DP / AVRCP
- Bluetooth Range: 33FT/10m
- Battery: 250mA
- Working Current: 15-20mA
- Charge Voltage: DC5V
- Product Size: 55mm (L) x 33mm (W) x 12.3mm (H)

## Package Content

- 1 x BT02 Bluetooth receiver
- 1 x 3.5mm audio head
- 1 x User manual
- 1 x Charge cable

## Trouble Shooting

### Q1: The product can't pair with your Bluetooth-enabled device

1. Please make sure your receiver has battery and the indicator light is flash quickly
2. Clear the pair list of your Bluetooth-enabled phone or laptop etc, then try again.

### Q2: No sound output

1. Please check if the 3.5mm audio cable or plug is tightly inserted.
2. Turn up the volume of the Bluetooth enabled device.

This device complies with part 15 of the FCC Rules. Operation is subject to the following two conditions: (1) This device may not cause harmful interference, and (2) this device must accept any interference received, including interference that may cause undesired operation.

Any Changes or modifications not expressly approved by the party responsible for compliance could void the user's authority to operate the equipment.

**Note:** This equipment has been tested and found to comply with the limits for a Class B digital device, pursuant to part 15 of the FCC Rules. These limits are designed to provide reasonable protection against harmful interference in a residential installation.

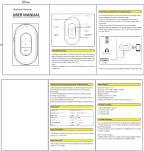
This equipment generates uses and can radiate radio frequency energy and, if not installed and used in accordance with the instructions, may cause harmful interference to radio communications. However, there is no guarantee that interference will not occur in a particular installation. If this equipment does cause harmful interference to radio or television reception, which can be determined by turning the equipment off and on, the user is encouraged to try to correct the interference by one or more of the following measures:

- Reorient or relocate the receiving antenna.
- Increase the separation between the equipment and receiver.
- Connect the equipment into an outlet on a circuit different from that to which the receiver is connected.
- Consult the dealer or an experienced radio/TV technician for help.

## FCC Radiation Exposure statement

The device has been evaluated to meet general RF exposure requirement. The device can be used in portable exposure condition without restriction.

## Documents / Resources

	<p><a href="#">Generic BT02 Stereo Smart 4.0 Bluetooth Audio Receiver</a> [pdf] User Manual BT02 Stereo Smart 4.0 Bluetooth Audio Receiver, BT02, Stereo Smart 4.0 Bluetooth Audio Receiver, 4.0 Bluetooth Audio Receiver, Audio Receiver, Receiver</p>
---	---

## References

- [User Manual](#)

### Manuals+, Privacy Policy

This website is an independent publication and is neither affiliated with nor endorsed by any of the trademark owners. The "Bluetooth®" word mark and logos are registered trademarks owned by Bluetooth SIG, Inc. The "Wi-Fi®" word mark and logos are registered trademarks owned by the Wi-Fi Alliance. Any use of these marks on this website does not imply any affiliation with or endorsement.