



[Home](#) » [General Lighting](#) » **General Lighting GL-BP0760 LED Flexible Display Screen User Manual** 

Contents [[hide](#)]

- [1 General Lighting GL-BP0760 LED Flexible Display Screen](#)
- [2 Specifications:](#)
- [3 Product Introduction](#)
- [4 Product Accessories](#)
- [5 Power Adapter Device Power Supply](#)
- [6 5m USB Power Cable Device Power Supply](#)
- [7 Device Connection](#)
- [8 Detailed Explanation of Screen](#)
- [9 3m USB Power Cable + Charger Device Power Supply](#)
- [10 APP Interface Description](#)
- [11 Program synchronization](#)
- [12 Precautions](#)
- [13 FCC Statement](#)
- [14 FCC Radiation Exposure Statement:](#)
- [15 Frequently Asked Questions](#)
- [16 Documents / Resources](#)
 - [16.1 References](#)



General Lighting GL-BP0760 LED Flexible Display Screen



Specifications:

- Operating System Compatibility:
 - Android: Minimum support for Android 7.0, compatible with 97.4% of Android devices on the market.
 - iOS: Requires iOS 12 or later, covering approximately 95% of iOS users.
- Power Adapter: Voltage 5V, Current 6A, Power 30W.
- Cable Configuration:
 - 5-meter USB power cable.
 - 3-meter USB power cable + charger.

Product Accessories:

- Display Screen Power Accessories: Choose 1 of 3 options
- Tape
- Power Adapter Device Power Supply:
 1. Always use the included power accessories provided with the product first.
 2. For self-powered setups, ensure compatibility with a DC-5.5 self-locking connector and a power output of 5V/6A.

Detailed Explanation of Screen Button Functions:

Ensure to follow the specific instructions provided for the respective power accessories to avoid any issues with the device.

Device Connection:

1. Before connecting the device, correctly wire and power it on according to the connection diagram.
2. Keep the device powered on for successful connection and use.
3. Permission authorization:
 - Allow necessary permissions for the APP to function normally.
 - Enable the mobile phone Bluetooth function and authorize Bluetooth usage permissions in the APP.

APP Interface Description:

Note: Screenshots may differ from the current version. Refer to the live app for the latest UI.

Bluetooth:

1. First-time device connection:
 - Open the APP and enter the homepage. If the device is not connected, follow the steps to connect successfully.
2. Troubleshooting if no device is found:
 - Refresh the list, check Bluetooth settings, permissions, and signal interference.
 - If no devices are found, restart both the device and the mobile phone Bluetooth functions.

Product Introduction

- Thank you for choosing our product! Please read this manual carefully before use to ensure correct and safe operation. We are committed to providing you with excellent products and services. Thank you for your trust and support! This product is an LED flexible display screen, controlled via a mobile app. Users can create personalized animations, customize graffiti works, and display dynamic text effects through the app. Additionally, the app includes a vast library of materials to unleash your creativity.

APP Compatibility Description

- Android System: Minimum support for Android 7.0, compatible with 97.4% of Android

devices on the market;

- iOS System Requires iOS 12 or later, covering approximately 95% of iOS users.

Download

1. App Store:

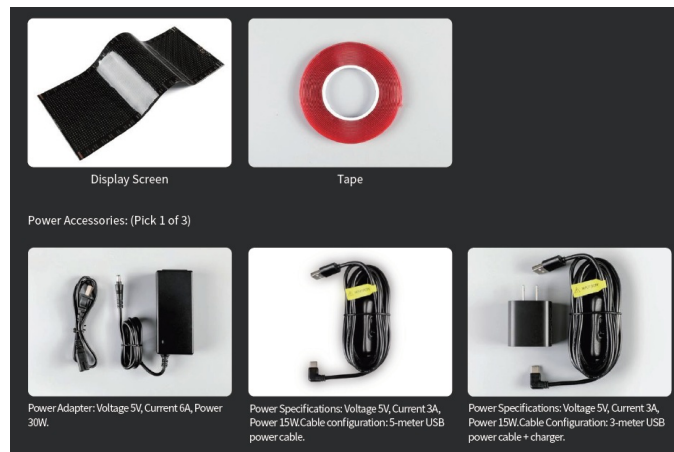
iOS Users: Go to the App Store and search for “Popusign” to download and install;

Android Users: Search for “Popusign” on Google Play to download.

2. QR Code Download: Scan the QR code below to jump to the corresponding page.

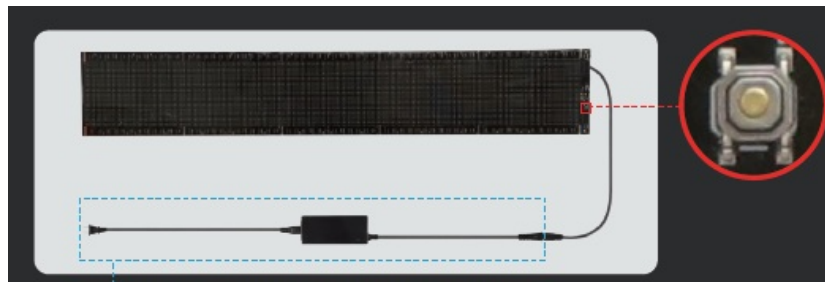


Product Accessories



Power Adapter Device Power Supply

1. Always use the included power accessories provided with the product first.
2. For self-powered setups, ensure compatibility with a DC-5.5 self-locking connector and a power output of 5V/6A interface, voltage 5V 6A.



5m USB Power Cable Device Power Supply

1. Always prioritize using the included power accessories provided with the product.
2. The power supply must be compatible with a USB-C interface; power output: 5V/3A.
3. Do not use all-protocol power supplies.

Device Connection

1. Before connecting the device, please correctly wire and power on the device according to the connection diagram, and keep the device powered on to ensure successful connection and use.
2. Permission authorization:
 1. Please allow the APP to obtain the necessary permissions to ensure normal operation of the APP functions.
 2. The mobile phone Bluetooth function needs to be enabled, and Bluetooth usage permissions need to be authorized in the APP.

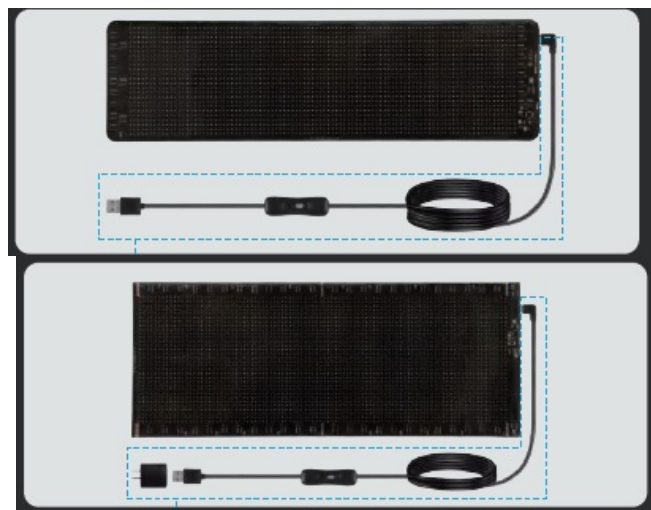
Detailed Explanation of Screen

Button Functions

1. Factory reset function: When the power is off, press and hold the button on the screen, then turn on the power. Release the button when the screen displays “**Reset...**” until the screen completes the factory default state. When the screen displays the Bluetooth name, the factory reset is successful.
Note: This operation will clear all custom settings and stored programs.
2. Program switching function: When the screen is playing a program, click the button to switch to the next program, and double-click the button to switch to the previous program.

3m USB Power Cable + Charger Device Power Supply

1. Always use the included power accessories provided with the product first.
2. For self-powered setups, ensure compatibility with a USB-C interface; power output: 5V/3A.




APP Interface Description


Note: Screenshots may differ from the current version. Refer to the live app for the latest UI.)

Bluetooth


1. First-time device connection

Open the APP and enter the homepage. The ”  ” in the upper left corner indicates

that the device is not connected. Click the “  ” button to enter the device search page, click the “Discover Device” button to search for the device’s Bluetooth. After finding your device’s Bluetooth, click the “Connect” button. After successful

connection, enter the homepage. The appearance of “  ” in the upper left corner indicates successful device connection.

2. Troubleshooting if no device is found


Step 1: Click the  icon in the upper right corner to refresh the list.

Step 2: If there are still no devices, please check:

1. The device Bluetooth is enabled and in discoverable mode.
 2. The mobile phone Bluetooth permissions have been authorized to the APP (confirm in system settings).
3. The device and mobile phone are within 15 meters, with no strong signal interference.

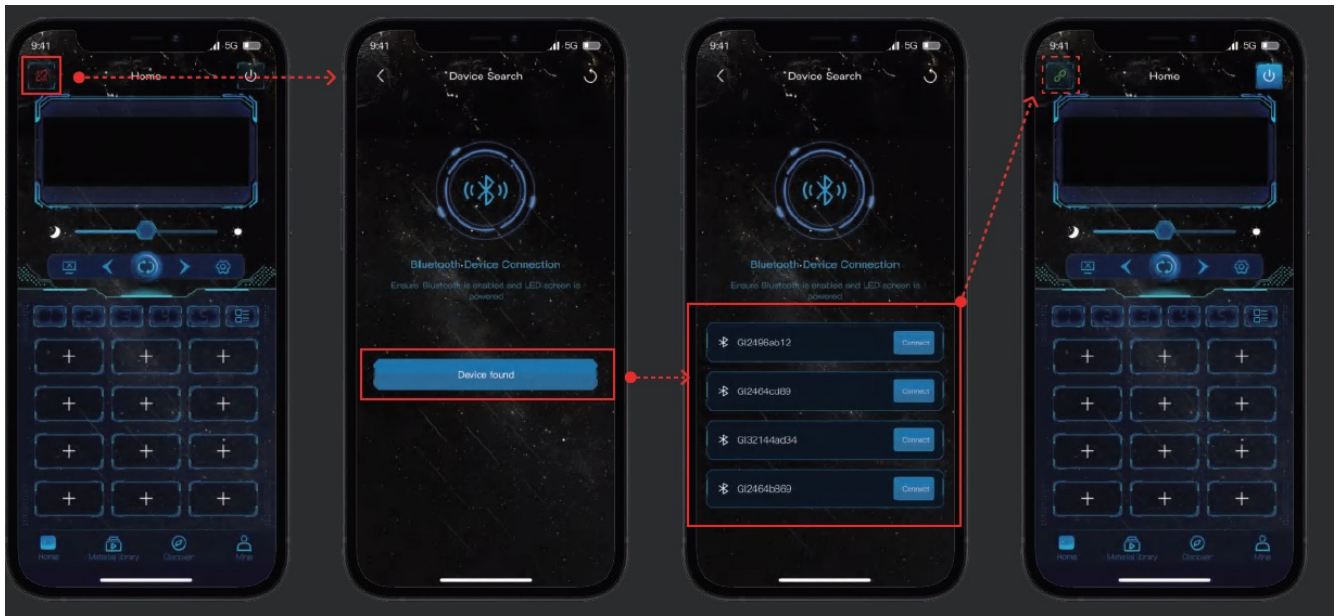
Step 3: Restart the device and the mobile phone Bluetooth function, and try again.

1. Actively disconnect the current connection


” On the APP homepage, click the  icon in the upper left corner and select ‘Disconnect.’”

4. Connect a new device

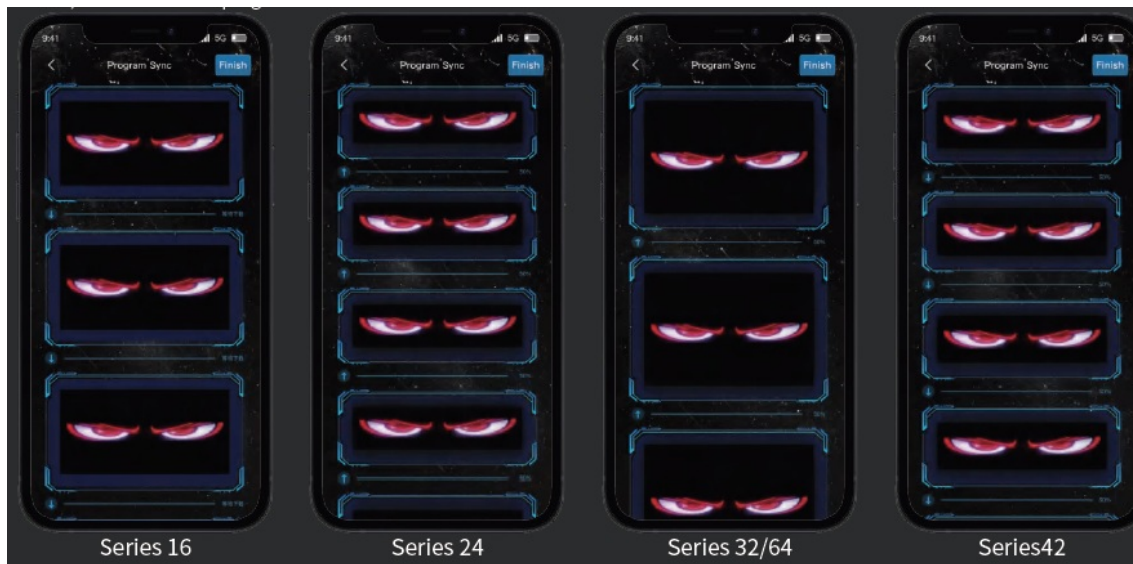
1. Follow the steps in “(3) Actively disconnect the current connection” to disconnect the current device.
2. Follow the steps in “(1) First-time device connection.”



Program synchronization

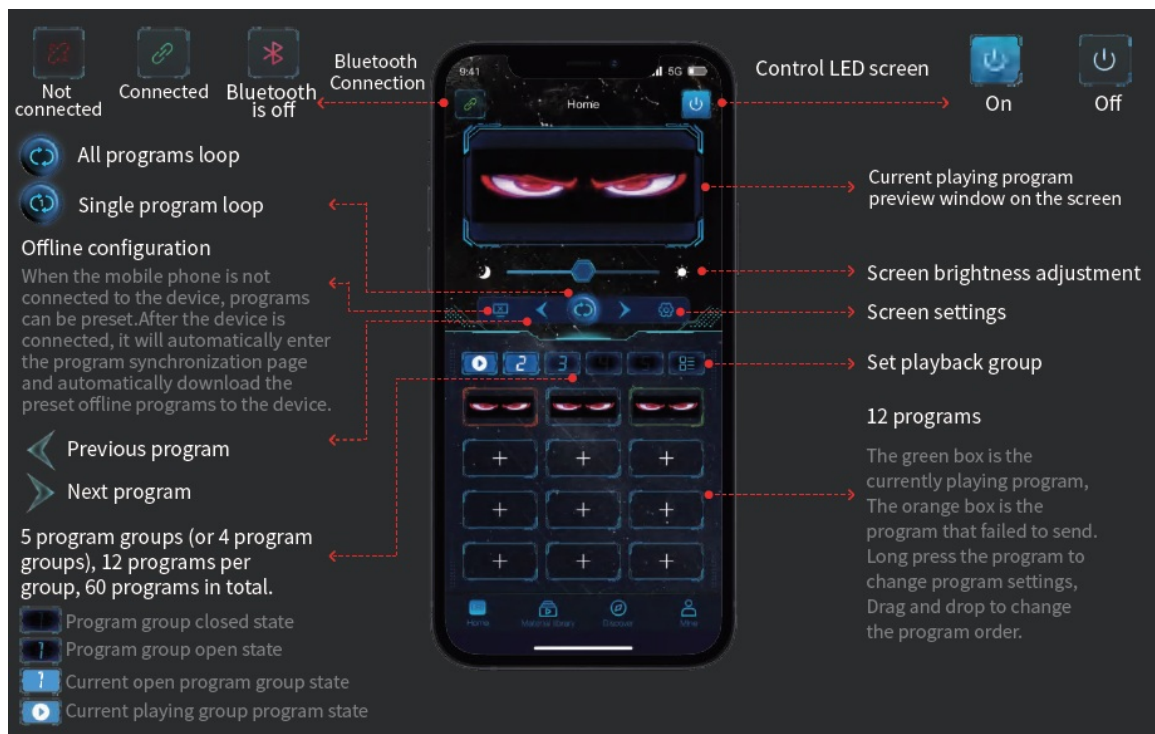
When the programs on the App and device are different, after the App connects to the device, it will automatically enter the program synchronization page. The program synchronization function will automatically download programs from the App to the device or upload programs from the device to the App, ensuring the programs in the App and on the device remain the same. During program synchronization, you can long-press any program to delete that program. After all upload or download progress bars reach 100%, click the “Complete” button to exit the program synchronization page. If the program download or upload fails, you can click the “ Retry ” button to retry the upload/download, or click the ” Delete ” button to delete that program. The interface may appear slightly different depending on screen size.

Tip: Do not forcibly exit the program synchronization page before synchronization is complete. Forcibly exiting the program synchronization page will cause the programs in the App and the device to differ, resulting in different programs being previewed on the App homepage and played on the device. After exiting and reopening the App, the App will re-enter the synchronization page for program synchronization. Alternatively, use My —Screen Settings—Screen Clear function to clear all programs in the App and the device, and then re-add programs.




Homepage

- After the App connects to screens of different sizes, the program preview window and program groups may vary slightly. Please refer to the actual interface.





New program

Click the  button; a pop-up window will appear to select the group to play. Up to 5 (or 4) program groups can be opened, then click the “Confirm” button; click “+” to create a new picture/animation, colorful text, or material library program. Click “+ -” next to the loop count to set the program loop count, with a range of 1- 99. A program group can add up to 12 programs, and 5 program groups can add up to 60 programs. Double-click the program in the program box to delete it, change its content, edit it, or modify the number of plays. Press and hold the program in the program box to adjust its settings, and drag the program freely to change its order.

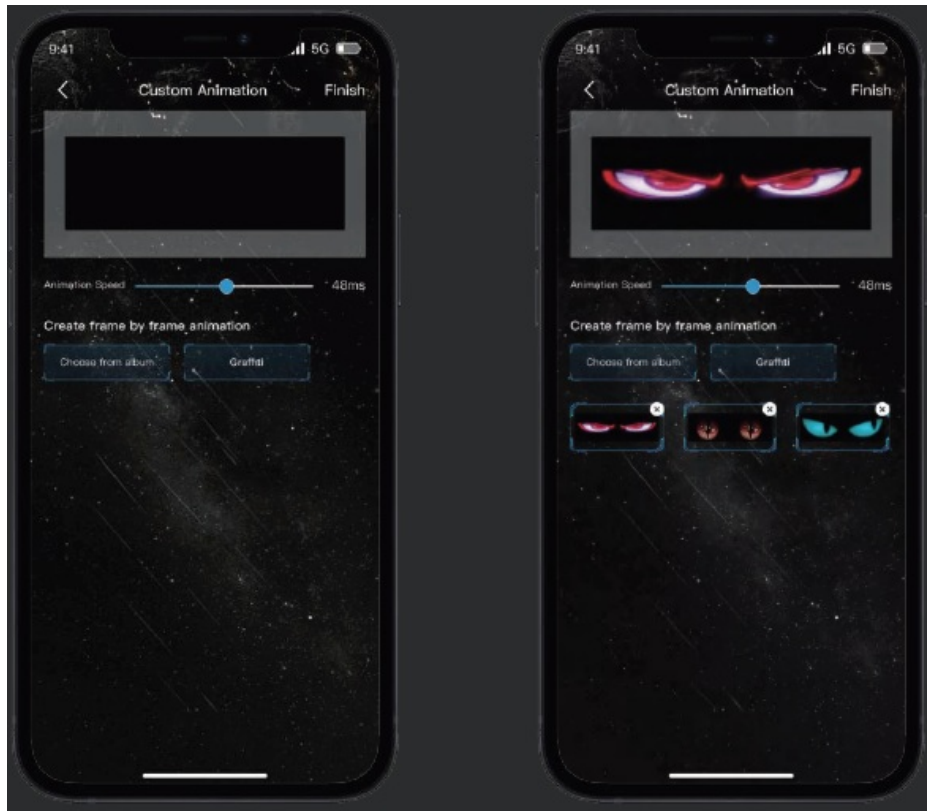


Picture/Animation

Create a new picture/animation program. Users can create their creative animations,

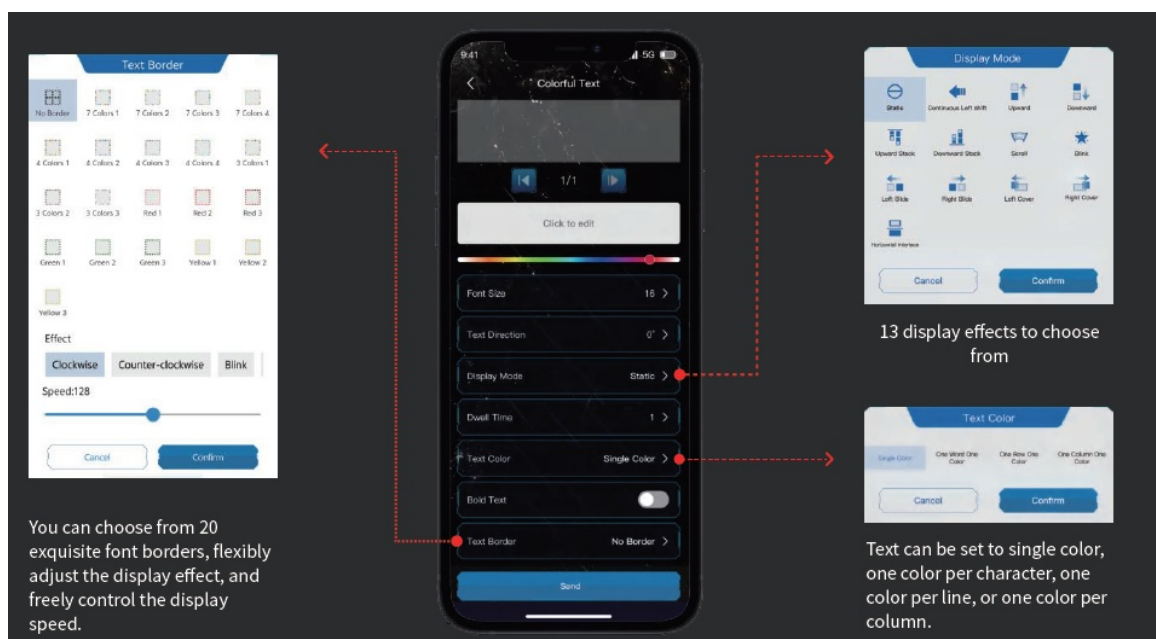
import multiple pictures from the mobile phone album (up to 50), set the appropriate animation speed, and send them to the device. You can also enter the graffiti page, save your graffiti works to the mobile phone album, and then import the album pictures to create animation or picture programs.

Tip: It is recommended to import pictures with the same resolution as the device. If pictures with different resolutions are imported and sent to the device, the actual display effect will not be ideal.



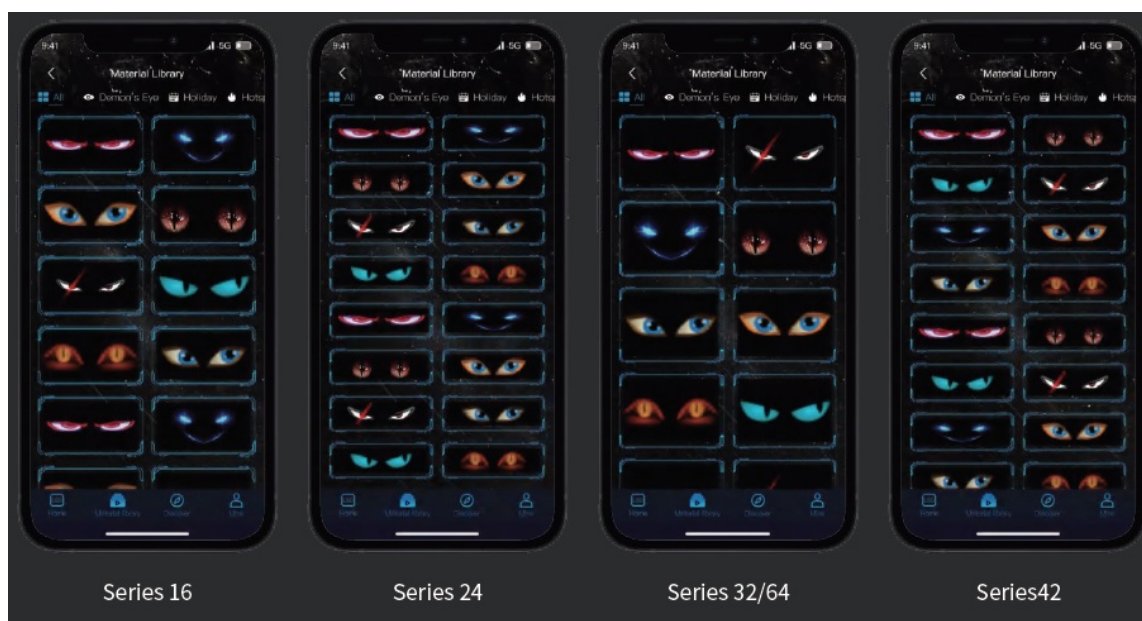
Colorful Text

- Create a new colorful text program. Users can enter any text, adjust font size, direction, display mode, color, set text dwell time and scrolling speed, and add various text border effects.



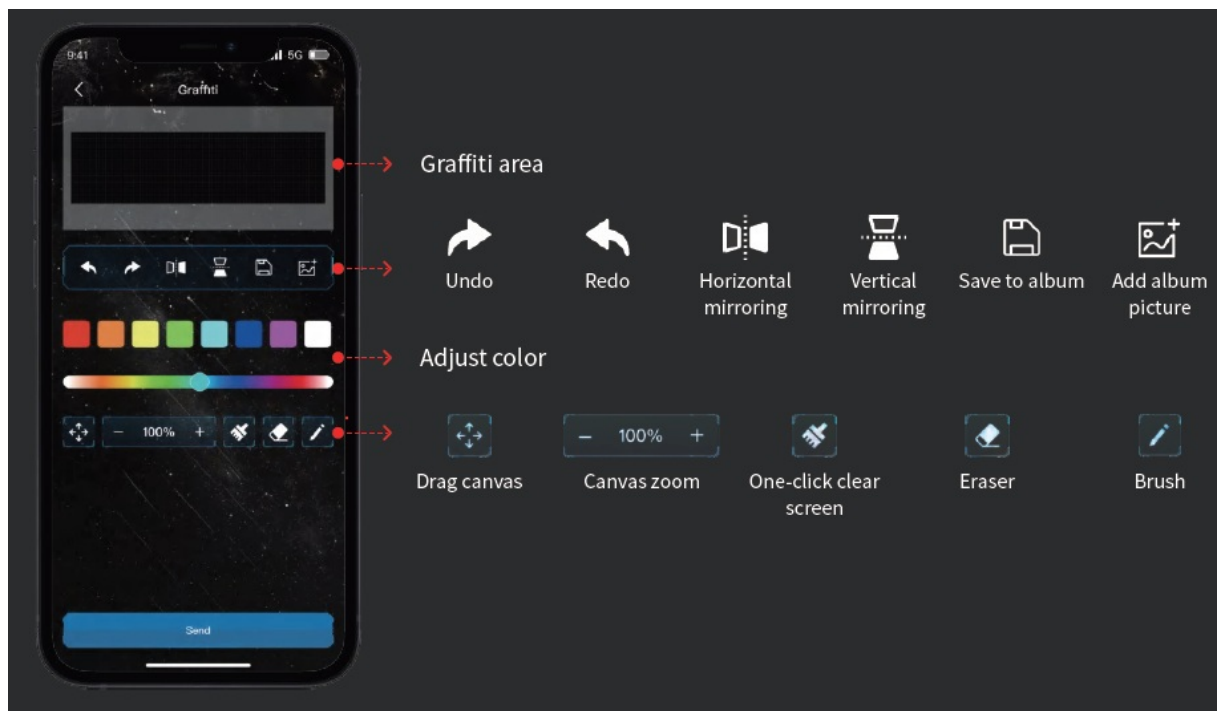
Material Library

- Create a new material library program, and it will jump to the material library page. Users can click the labels at the top of the page to select their favorite material programs and send them to the device.



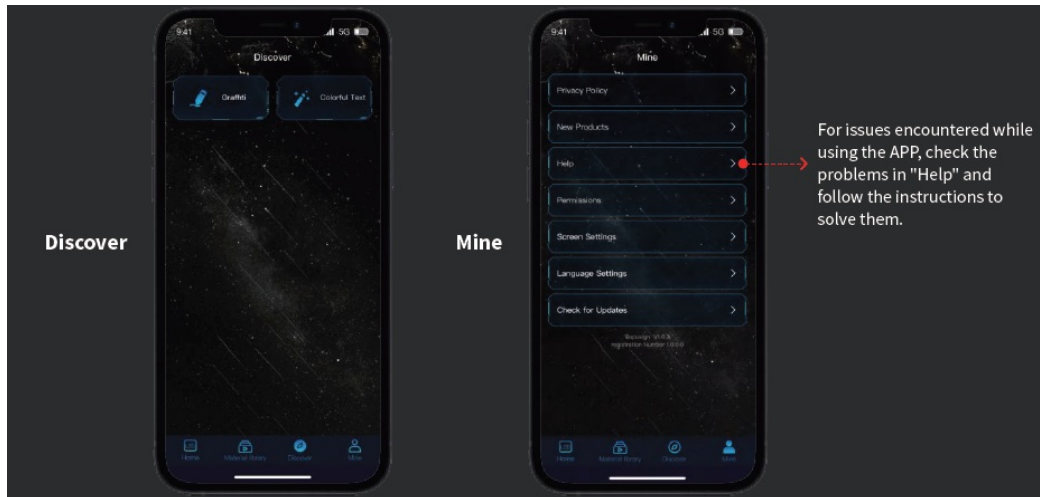
Creative Graffiti

- Supports custom brush colors, can undo/redo the previous step, and set horizontal and vertical mirroring. Graffiti can be saved to the album or added from the album. The canvas can be dragged and zoomed, equipped with an eraser, and a one-click clearscreen function.



Discover

The Discover page contains graffiti and colorful text. Click graffiti to create a graffiti program, and click colorful text to create a colorful text program. For details, refer to the graffiti page and colorful text page.

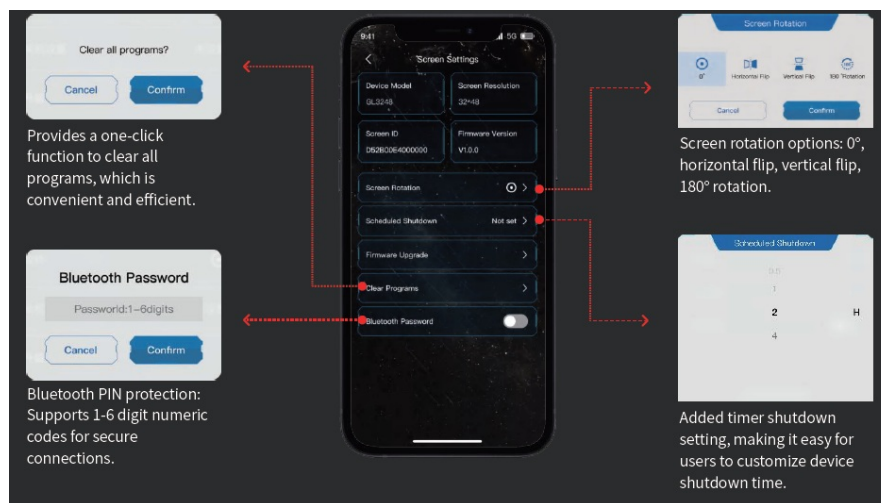


Mine

The My page allows you to view the privacy policy, obtain the latest product information and usage permissions, and supports screen display settings, language switching function, and online detection of APP version update services. For issues encountered while using the APP, check the problems in “Help” and follow the instructions to solve them.

Screen Settings

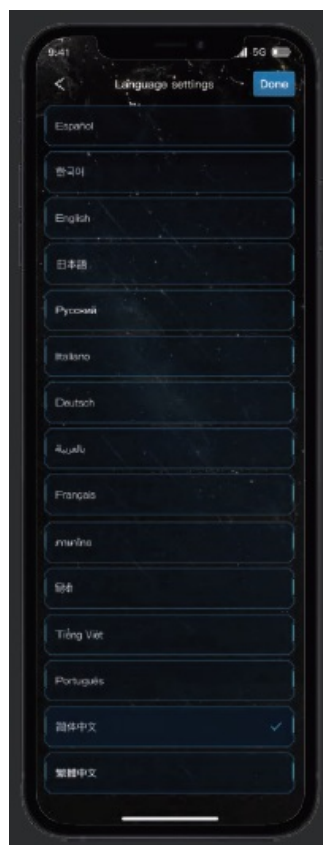
The screen settings page displays device information and allows configuration of screen orientation, scheduled power-off, Bluetooth password, firmware upgrades, and program clearing. The device information includes model number, resolution, device ID, and firmware version.



Language Settings

15 languages to choose from:

- Simplified Chinese, Traditional Chinese, English, German, French, Russian, Thai, Italian, Portuguese, Spanish, Vietnamese, Korean, Japanese, Arabic, Hindi.



Precautions



Warning

To assure continued compliance, any changes or modifications not expressly approved by the party. Is R responsible for compliance could void the user's authority to operate this equipment.

FCC Statement

- This equipment complies with Part 15 of the FCC Rules. Operation is subject to the following two conditions:
 1. This device may not cause harmful interference, and
 2. This device must accept any interference received, including interference that may cause undesired operation.

NOTE: This equipment has been tested and found to comply with the limits for a Class B digital device, pursuant to part 15 of the FCC rules. These limits are designed to provide reasonable protection against harmful interference in a residential installation. This equipment generates, us, and can radiate radio frequency energy and, if not installed and used according to the instructions, may cause harmful interference to radio communications.

However, there is no guarantee that interference will not occur in a particular installation. If this equipment does cause harmful interference to radio or television reception, which can be determined by turning the equipment off and on, the user is encouraged to try to

correct the interference by one or more of the following measures:

- Reorient or relocate the receiving antenna.
- Increase the separation between the equipment and receiver.
- Connect the equipment to an outlet on a circuit different from that to which the receiver is connected.
- Consult the dealer or an experienced radio/TV technician for help.

FCC Radiation Exposure Statement:

- The equipment complies with the FCC Radiation exposure limits set forth for an uncontrolled environment. This equipment should be installed and operated with a minimum distance of 20cm between the radiator and your body.

Frequently Asked Questions


Q: How do I know if my device is successfully connected?

A: Upon successful connection, an indicator will appear on the homepage of the APP confirming the device connection.

Q: What should I do if my mobile phone cannot find the device via Bluetooth?

A: Ensure Bluetooth is enabled on both devices, permissions are granted, and check for signal interference. Restarting both devices can also help resolve connectivity issues.

Documents / Resources

	<p>General Lighting GL-BP0760 LED Flexible Display Screen [pdf] User Manual</p> <p>2BPS9-GL-BP0760, 2BPS9GLBP0760, GL-BP0760 LED Flexible Display Screen, GL-BP0760, LED Flexible Display Screen, Flexible Display Screen, Display Screen, Screen</p>
---	---

References

- [User Manual](#)

■ General Lighting

🔍 2BPS9-GL-BP0760, 2BPS9GLBP0760, Display Screen, Flexible Display Screen, General Lighting, GL-BP0760, GL-BP0760 LED Flexible Display Screen, LED Flexible Display Screen, SCREEN

Leave a comment

Your email address will not be published. Required fields are marked *

Comment *

Name

Email

Website

☐ Save my name, email, and website in this browser for the next time I comment.

Post Comment

Search:

e.g. whirlpool wrf535swhz

Search

[Manuals+](#) | [Upload](#) | [Deep Search](#) | [Privacy Policy](#) | [@manuals.plus](#) | [YouTube](#)

This website is an independent publication and is neither affiliated with nor endorsed by any of the trademark owners. The "Bluetooth®" word mark and logos are registered trademarks owned by Bluetooth SIG, Inc. The "Wi-Fi®" word mark and logos are registered trademarks owned by the Wi-Fi Alliance. Any use of these marks on this website does not imply any affiliation with or endorsement.

