

General Filters 2A-17A Multi-Purpose Filters



General Filters 2A-17A Multi Purpose Filters Instruction Manual

[Home](#) » [General Filters](#) » General Filters 2A-17A Multi Purpose Filters Instruction Manual 

Contents

- [1 General Filters 2A-17A Multi-Purpose Filters](#)
- [2 INSTALLATION](#)
- [3 PARTS LIST](#)
- [4 Documents / Resources](#)
 - [4.1 References](#)
- [5 Related Posts](#)

GENERAL FILTERS

General Filters 2A-17A Multi-Purpose Filters



WARNING

INSTALLATION OR MAINTENANCE OF THIS FUEL OIL FILTER MUST BE PERFORMED BY A QUALIFIED SERVICE TECHNICIAN FAMILIAR WITH OIL HEATING SYSTEMS. THE SERVICE TECHNICIAN MUST USE THE PROPER TOOLS AND EQUIPMENT AND BE LICENSED BY THE PROPER AUTHORITY WHERE APPLICABLE. INSTALLATIONS SHALL BE IN ACCORDANCE WITH THE REGULATION OF AUTHORITIES HAVING JURISDICTION AND IN CANADA, CSA STANDARD B139. INSTALLATION OR SERVICE WORK PERFORMED BY AN UNQUALIFIED PERSON COULD RESULT IN HAZARDS TO THAT PERSON, OTHER PEOPLE, AND THE ENVIRONMENT. THESE HAZARDS COULD INCLUDE, BUT ARE NOT LIMITED TO, FUEL OIL SPILLS, FIRE, SEVERE BURNS, DAMAGE TO HEATING SYSTEM COMPONENTS AND OTHER HAZARDS. IF BIO-DIESEL FUELS OUTSIDE ASTM STANDARD D396-09 ARE USED, INSTALL GREEN BIOGASKET™ BG-2A. INSTALLATION AND MAINTENANCE

This filter is for use with stationary Fuel Oil appliances only. The filter must be installed in the suction line between the storage tank and burner where it will protect the fuel pump and burner nozzle from impurities. It may be installed either at the tank or at the burner. On underground storage tanks, the filter may be installed in the suction line where it enters the building. The filter must be installed so that NONE of the components in the assembly are in contact with the ground, any source of constant moisture or any source of electric current as these will shorten the life of the filter. Filter damage and leakage will result from freezing of quantities of collected water. To prevent this, install filter within a heated space. If installed where freezing temperatures occur, sufficient maintenance to prevent freeze damage is the responsibility of the installer. On a one pipe system, the oil flow is equal to the nozzle capacity. On two pipe systems (suction and return), the oil flow through the filter is full pump capacity. It may be necessary to replace the cartridge more often because of the higher flow rate.

INSTALLATION

1. Turn off the electricity to the burner and close the shut-off valve in the fuel line.
2. Install filter between shut-off valve and burner with filter bowl down. Oil flow through the filter must be as indicated by the words "IN" and "OUT" on the filter head.

3. Install 3/8" steel pipe (not included) or brass fittings (not included) as required to make the transition to the fuel line. Use an oil-resistant pipe joint compound on all pipe threads. Tighten all fittings using two wrenches.
4. Open the fuel shut-off valve. Place a container under the filter and remove the vent screw until oil shows at the vent port. Tighten the vent screw and check all connections for leaks.
5. Prime fuel pump, if necessary, and run burner for approximately 10 minutes. Re-check all connections for leakage.
6. Technician **MUST ENSURE** there are no leaks from any part of the filter assembly prior to completing the installation. If there are any leaks, it is the responsibility of the technician to either repair the leak or replace the filter with a new unit.

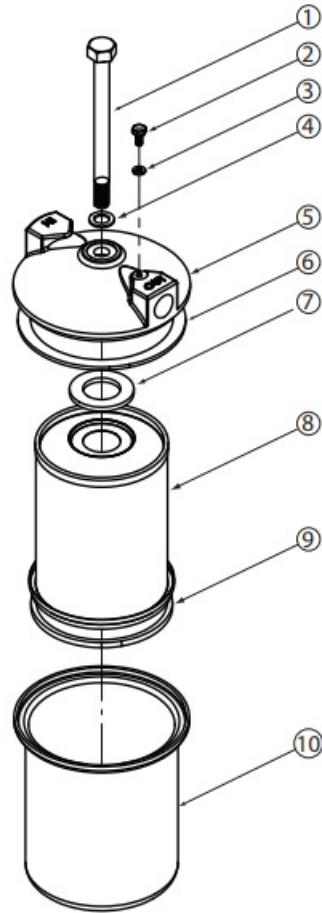
INSPECTING THE FILTER AND CHANGING THE CARTRIDGE

The oil filter must be inspected and the cartridge replaced each heating season. To begin the inspection, follow the instructions below:

1. Turn off the electricity to the burner and close the shut-off valve in the fuel line.
2. Loosen the center bolt and remove the filter bowl.
3. Remove, carefully clean, and **INSPECT THE MESH ELEMENT FOR DAMAGE**. Clean filter bowl and
 - **INSPECT FOR DAMAGE**
 - If any of the following are seen during the inspection, the damaged parts or entire oil filter assembly must be replaced:
 - **A.** Surface flaws or corrosion inside or outside the filter bowl, including but not limited to:
 - Scratches or flaking of the filter bowl coating.
 - Areas of missing coating with bare metal exposed.
 - Visible red or white rust in any area of the filter bowl.
 - Surface imperfections including pitting or bubbling.
 - **B.** Potential leaks or signs of leaks coming from any area of the filter.
 - **C.** Any signs the lower bolt has been tampered with. (Do NOT attempt to loosen this bolt)
 - **D.** Surface flaws or visual defects inside or outside the cast iron head, including but not limited to:
 - Visible red rust in any area of the head.
 - Areas of missing coating on the outside with the bare casting exposed.
 - Surface imperfections including pitting or cracking.
 - **E.** Surface flaws or corrosion on the center bolt, vent screw, or any internal components including hex coupler and sealing cup
 - **WARNING:** Failure to perform a thorough inspection could result in a leaking oil filter and potential lawsuits. Only if the oil filter passes the visual inspection above, may the installer proceed with replacing the filter cartridge by following the instructions below:
 - **4.** Replace the cleaned mesh element, gaskets for the bowl, center bolt and vent screw provided. Use of Bio-Diesel Fuel with any Buna-N rubber gaskets can result in gasket damage and leakage. If Bio-Diesel Fuels are used, install the green BioGasket™ BG-2A.
 - **5.** Reassemble the bowl to the filter head and tighten the center bolt.
 - **6.** Open the fuel valve and vent filter as described in Step 4 under installation.
 - **7.** Run the burner and check filter for leakage.
 - **8.** Technician **MUST ENSURE** there are no leaks from any part of the filter assembly prior to completing

the installation. If there are any leaks, it's the responsibility of the technician to either repair the leak or replace the filter with a new unit.

PARTS LIST



1	2A-7 04	CENTER BOLT		1/4, 3/8
	2A-2 2	CENTER BOLT		GAGE PORT 1/4, 3/8
	2A-2 2	CENTER BOLT CENTER BOLT		1/2, 3/4
	2A-7 54			1-INCH
2	1A-3 8 P-1 74	VENT SCREW PORT PLUG		ALL VENT SCREW AL L GAGE P ORT
3	1A-3 9	VENT GASKET		ALL VENT SCREW
4	1A-5 8	CENTER GASKET		ALL
5	99AP	FILTER CAP FILTER CAP FILTER CAP FILTER CAP		1/4, 3/8
	2A-1 7A			GAGE PORT 1/4, 3/8 1/2, 3/4
	2A-1 7A			1-INCH
	2A-2 0			
6	BG-2 A 2A- 705	BOWL GASKET BOWL GASKET		
7	2A-1 9	TOP CART.GASK. TOP CART.GASK.		
	2A-1 9T			
8	2A-710SL-30		CARTRI DGE CA RTRIDG E CART RIDGE CARTRI DGE CA RTRIDG E CART RIDGE	30 MESH
	2A-710SL-40			40 MESH
	2A-710SL-60			60 MESH
	2A-710SL-100			100 MESH
	2A-710SL-150			150 MESH
	2A-710SL-200			200 MESH


9. 2A-20 BOT. CART.GASK. 2A-20T BOT. CART.GASK.

10. 2A-722 BOWL ASSY. ALL

GENERAL FILTERS, INC. 43800 GRAND RIVER AVE. NOVI, MI 48375 USA TEL [248-476-5100](tel:248-476-5100) CANADIAN
GENERAL FILTERS, LTD 400 MIDWEST ROAD TORONTO, ON CANADA M1P3A9
TEL [416-757-3691](tel:416-757-3691)

Form 2A-61. Rev. 3.0

Documents / Resources

	<p>General Filters 2A-17A Multi Purpose Filters [pdf] Instruction Manual 2A-17A, 2A-17A Multi Purpose Filters, 2A-17A, Multi Purpose Filters, Purpose Filters, Filters</p>
---	--

References

- [User Manual](#)

[Manuals+](#), [Privacy Policy](#)

This website is an independent publication and is neither affiliated with nor endorsed by any of the trademark owners. The "Bluetooth®" word mark and logos are registered trademarks owned by Bluetooth SIG, Inc. The "Wi-Fi®" word mark and logos are registered trademarks owned by the Wi-Fi Alliance. Any use of these marks on this website does not imply any affiliation with or endorsement.