

GENELEC® 9401A Multichannel Audio Over IP Interface



GENELEC 9401A Multichannel Audio Over IP Interface Instruction Manual

[Home](#) » [GENELEC](#) » GENELEC 9401A Multichannel Audio Over IP Interface Instruction Manual 

Contents

- [1 GENELEC 9401A Multichannel Audio Over IP Interface](#)
- [2 Introduction](#)
- [3 Installation](#)
- [4 Troubleshooting](#)
- [5 Connection](#)
- [6 Guarantee](#)
- [7 SPECIFICATIONS](#)
- [8 Web interface function reference](#)
- [9 Documents / Resources](#)
 - [9.1 References](#)
- [10 Related Posts](#)

GENELEC®

GENELEC 9401A Multichannel Audio Over IP Interface



Introduction

Congratulations and thank you for purchasing the Genelec 9401A multichannel audio-over-IP (AoIP) interface. This manual addresses the setting up and use of the Genelec 9401A intended for use with 7300 Series

subwoofers. The Genelec 9401A enables Smart Active Monitoring (SAM) monitors and subwoofers to receive multichannel audio presentations using standard AoIP networks. The 9401A offers 16 channels of AES-EBU digital audio feeds for SAM monitors and a dedicated AES/EBU interface for 7300 series Smart Active Monitoring (SAM) subwoofers, as well as an auxiliary AES/EBU output for supporting monitoring systems, such as headphones.



The 9401A enables the monitoring of immersive digital audio, supporting monitoring layouts up to 9.1.6 configuration when the low frequency effects (LFE) channel is also used. The auxiliary AES/EBU output can be used to connect, for example, an additional stereo monitor system or headphones when a digital-to-analog interface device and a headphone amplifier is used. Genelec's energy-saving Intelligent Signal Sensing (ISS) function automatically puts the 9401A into a power-save state when no AoIPstream is present. The waiting time before activation can be configured using Genelec Loudspeaker Manager (GLM) software. When ISS is on your monitoring system will remain ready for action and the 9401A will consume less than 4.5 watts of power. The interface will wake up and switch to normal operating mode when it senses an AoIP stream.

This 9401A is supplied with:

- Mains cable
- 5 m GLM network cable
- Quick Setup Guide
- Operating manual via QR code

The 9401A uses in addition a standard CAT cable for the IP network connection.

Installation

We strongly recommend switching off/ disconnecting mains power from all system devices before connecting signal cables.

Connections

Pay attention to the GLM network and Ethernet connectors. The GLM network uses the 8P8C (RJ45) connector but is not compatible with Ethernet or Power over Ethernet (PoE). The mains input supports a wide voltage range (100-240 VAC, 50-60 Hz). If the mains power is provided by a generator, inverter or a low-quality UPS device, we recommend using a harmonic filter to reduce the unwanted harmonic distortion.

The two digital audio stream inputs for ST2110, AES67 or Ravenna digital audio stream uses a standard 1000BASE-T compatible network interface with an RJ45 connector. The two inputs offer redundancy and can be configured for fast and seamless hand-over in case of the failure in the primary stream input. When the audio content in the stream carries a low frequency effects (LFE) channel, the 9401A is configured to extract the correct channel as the LFE content and assign the LFE content to the AES/EBU output and subframe by using the GLM software.

The multichannel audio output for the monitors uses one DB25 connector to deliver 8 AES/EBU audio signals,

carrying 16 channels of audio. The output is a bit-to-bit copy of the stream content audio signals, so the outputs retain the original signal quality without modification. When used, the LFE signal is output using the subwoofer interface and is also available through the DB25 connector, meaning that the LFE content is available for any device connected to this output. The content of the multichannel audio output is configured using the HTTP web interface. The digital audio output for the subwoofer is a single male XLR connector, which uses an AES/EBU cable to carry the sum of all the main channel inputs over one AES/EBU subframe and the LFE channel, if used, over the other AES/EBU subframe. A GLM Kit or SAM Reference Controller (RC) and Genelec.

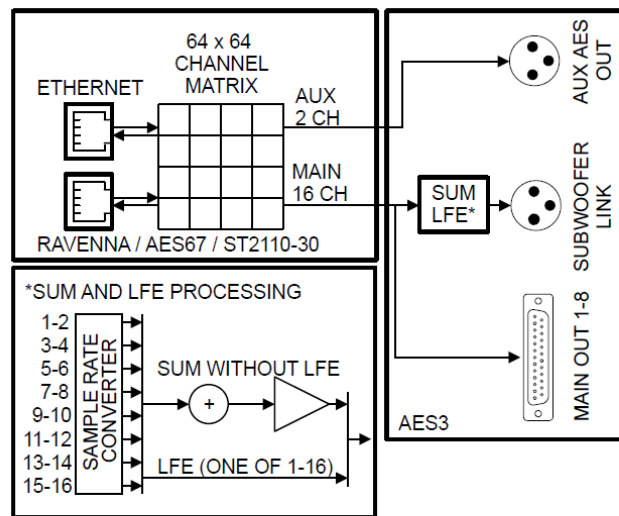


Figure 1. Functional block diagram of the 9401A and the sample rate converter (SRC)

Loudspeaker Manager (GLM) software is required to use the 9401A with 7300 Series subwoofers. The AES/EBU output on 7300 Series subwoofers enables the daisy chaining of additional SAM subwoofers to increase the capacity of the system's low frequency acoustic output (SPL). To make this possible, GLM software will align the playback of the complete subwoofer system with the rest of the monitoring system. The 9401A includes two GLM Network connectors for management using Genelec Loudspeaker Manager (GLM) software. The auxiliary digital audio output is a single XLR connector. It delivers two channels of audio. The content of the auxiliary output is configured using the HTTP web interface. The 9401A includes two GLM Network connectors for management using Genelec Loudspeaker Manager (GLM) software.

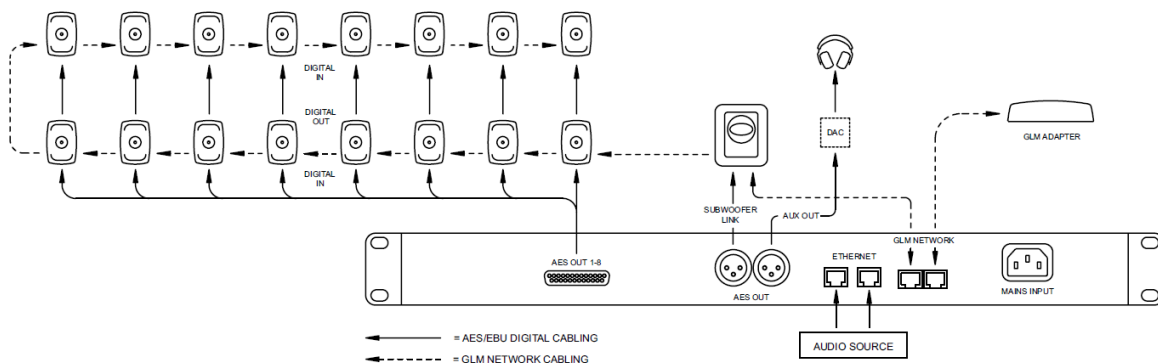


Figure 2. An example monitoring system connected with the 9401A interface

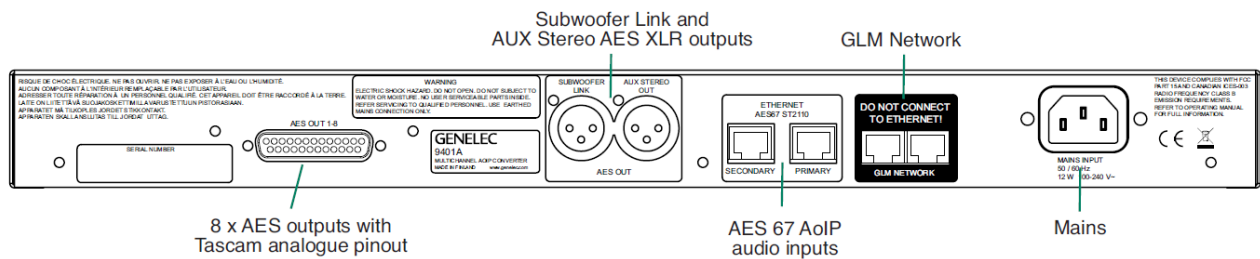


Figure 3. Connectors on the back panel of the 9401A interface

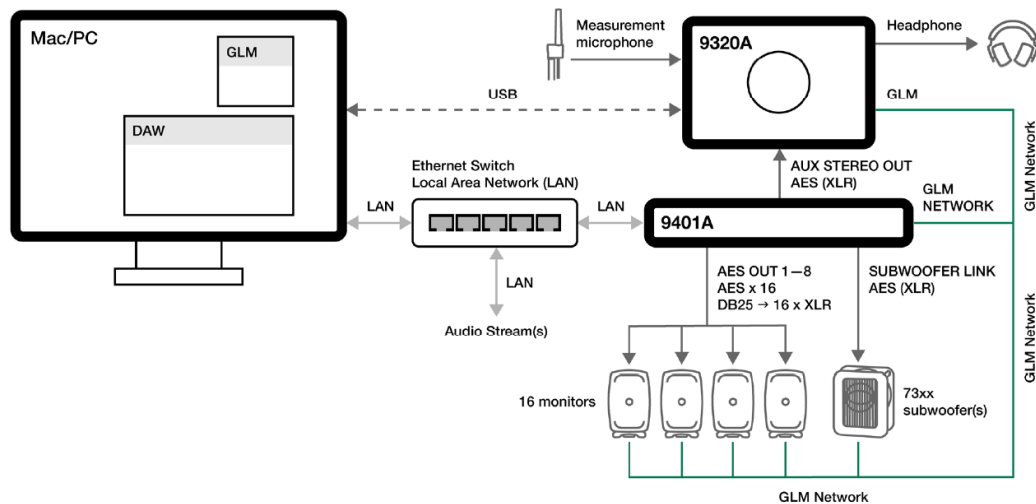


Figure 4. Example connection to computer and Genelec 9320A Reference Controller

Redundant IP Network Input

The 9401A offers two network interface connections. This enables redundant connectivity following the ST2022-7 specification. The 9401A can be connected to two separate networks, so that audio streaming is seamlessly switched over if the primary IP network is compromised. Refer to the Web interface function reference for additional information on the network interface settings. The primary network interface is selfconfiguring by default. This means that the 9401A will automatically assign an IP address to itself without DHCP or DNS servers. The assigned IP address is visible in GLM. It will advertise its services and be discoverable through Bonjour, Avahi or similar implementations. For discovery, registration and control in ST2110 networks, 9401A supports the NMOS IS-04 and NMOS IS-05 interface specifications. The secondary network interface is set in switched mode by default. IP Packets entering the primary port will be forwarded to the secondary port, allowing a second device to be connected without using a separate network switch. It can be configured using the web interface, which can be accessed through GLM. Both network interfaces support zeroconfiguration, DHCP or static IP operation. The input connector of the 9401A follows the 1000Base-T standard for Gigabit Ethernet. Slower transmission speeds (10Base-T, 100Base-T) are not supported. Use of CAT 5e cabling or better is necessary.

Selection of IP switch

The 9401A is fully compatible with standard Gigabit Ethernet and IP switch technology. Genelec recommends using a managed switch. Managed IP switches offer the ability to configure, manage and monitor the local area network, typically using a web browser user interface, and this helps in creating a well working system. The IP switches shouldsupport QoS and multicast groups. Differentiated services (DiffServ) typically implement QoS prioritization of IP traffic. DiffServ marks IP packets according to priority. In response, IP switches can prioritize media traffic to improve system performance. Differentiated services code point (DSCP) markings in the IP packet headers are sensed by the QoS capable IP switch. Multicast groups can be used to reduce traffic in large networks byforwarding data only to the devices that are set to receive it. Genelec does not endorse certain IP switch brands as the 9401A works perfectly with all high-quality standard IP switches with these capabilities. Use of 1 Gbps (Gigabit) or faster IP switches is mandatory.

Network Structure

For redundant connectivity, Genelec recommends a spine-leaf architecture. Otherwise, a star architecture is recommended. IP device ports should not be daisy chained to several IP devices. Each IP switch must have its own IP address. The 9401A can act as an IEEE1588-2008compliant clock source for the ST2110, AES67 or Ravenna network using the Precision Time Protocol version 2 (PTPv2). The PTP on 9401A is fully configurable through the web interface. Refer to the Web interface function reference for additional information on the PTP settings. Audio-over-IP requires the use of a cable-based LAN network. Low-latency uncompressed audio-over-IP streaming is not feasible over WLAN.

ST2022-7 Setup

ST2022-7 support is enabled by selecting the “Multi-Interface mode” option under Network in the web interface General settings page. The two interfaces should be configured to use different IP address ranges to avoid address conflicts. Changing the interface settings requires a reboot of the device. The 9401A will automatically detect a ST2022-7 stream source and seamlessly switch over if one of the Ethernet links is disconnected.

	AES67 Mode
Sampling rate	48 kHz
Word length	24 bits
Routing	Multicast
Latency	3 ms

Table 1. Using the 9401A with Dante systems

Indicator	Colour, indication	Meaning
Power switch	Solid green	Power on, normal operation
	Blinking green	GLM is adjusting 9401A
	Green blink every 10 s	9401A in power save mode
	No light	No power, power off
Input signal indicator	Solid green	Valid digital audio is detected and received
	No light	Valid input is not detected

Table 2. Front panel indicator light functions

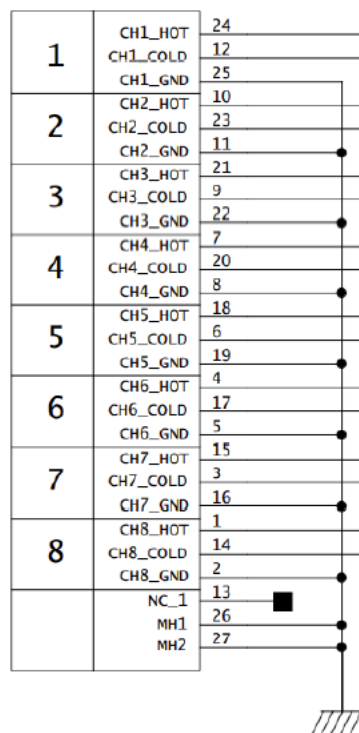


Figure 5. Digital audio output cable pin-out.

Dante Compatibility

9401A can interoperate with Dante systems using the AES67 mode. This must be enabled in Dante systems that connect to 9401A to enable audio to pass. See Table 1.

Output Cabling

The AES59 standard offers a configuration to deliver 16 channels of digital audio in one direction. This configuration is used in the output DB25 connector of 9401A. The audio output in 9401A is intended for connections to monitors. The recommended cable for this connection is an 8 x XLR male fan-out cable following the AES59 pinout, also known as the Tascam analogue pinout. For example, an Avid cable type DB25-XLRM DigiSnake can be used. In addition, AES/EBU XLRto- XLR cables are needed to extend the signals from the snake output onwards to the monitors.

The AES59 standard output connector pinout of the 9401A is shown in Figure 5. We strongly recommend that a high-quality AES/ EBU digital audio cable be used.

Controls and Indicators

The 9401A's front panel features a power switch with a power-on light as well as nine active-connection indicator lights for the AES/EBU outputs. The 9401A is configured using Genelec Loudspeaker Manager (GLM™) software. Please refer to the 'Use With GLM Management Network' section below for details. While editing the 9401A settings in GLM, the interface's power-on light will blink continuously. A lit light indicates that the corresponding AES/EBU is available for output. If an output light is off, there is an AES/EBU data issue or there is no valid AES/EBU audio. See Table 2 for a list of indicator lights and their functions.

Troubleshooting

If there are issues with audio transmission such as cuts or latency peaks, please check the following common issues. For additional information on how to perform each step, consult the manufacturer documentation or a technician.

- Processor usage of the connected computer. If the usage is at over 75 %, there is a risk of cuts in transmission. Attempt closing unnecessary background programs.

- Power saving settings of the processor or the Ethernet adapter. Attempt disabling these settings or setting the computer to high performance mode. If using a laptop, avoid using battery power and run on mains power instead.
- Antivirus and firewall settings. Make sure that the antivirus is not interfering with the streaming programs, and that the necessary firewall rules are set.
- Buffer length of the transmitter or receiver. Attempt increasing the buffer length or setting additional safety playout delay in the web interface general settings. If using different Ethernet adapter models in ST2022-7 mode, increasing the buffer size might be necessary to avoid cuts between switching.
- Other Ethernet or wireless adapters (Bluetooth, Wi-Fi). If these are active at the same time with the Ethernet adapter used for audio transmission, latency peaks may occur. Attempt disabling all other network and wireless adapters. An active internet connection on the streaming Ethernet interface may also cause latency peaks.
- For the lowest latency, a network adapter with hardware PTP timestamping support should be used.

Configuration and Management Using GLM and the HTTP Web Interface

The 9401A is set up using Genelec Loudspeaker Manager GLM™ software, using GLM's Management Network. Advanced setup is done via an HTTP web interface. The web interface can be accessed by pressing the URL button in GLM settings for the 9401A. Refer to the Web interface function reference for additional information. More information about GLM is available in the SAM System Operating Manual.

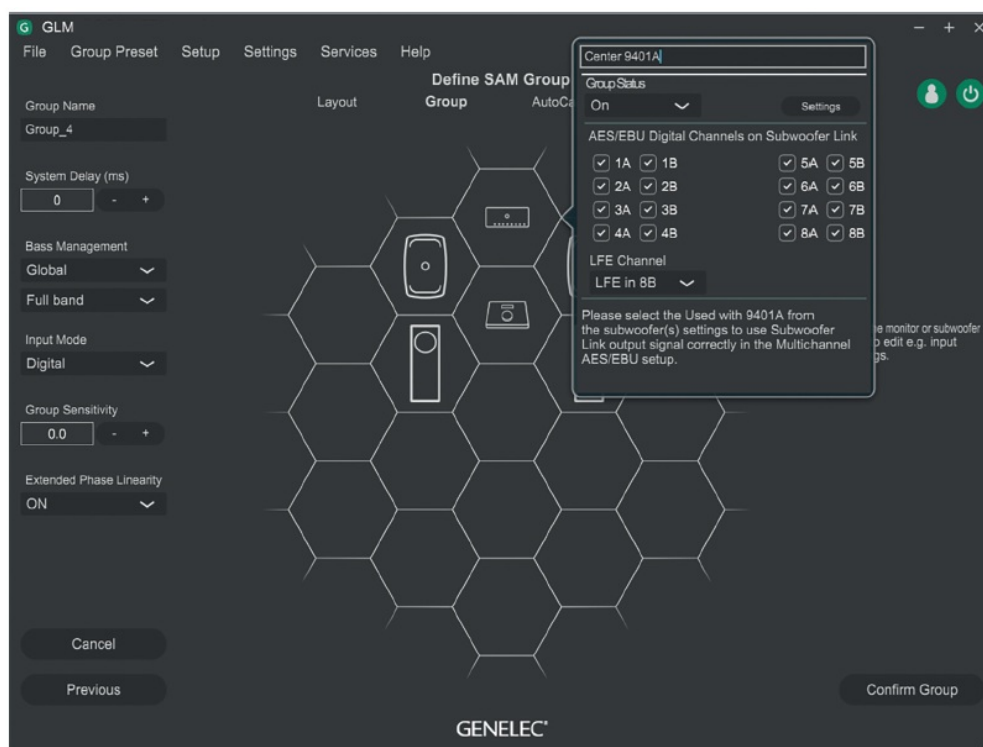


Figure 6. 9401A setup panel in GLM software

Connection

Configuration consists of the following steps:

- Connect the IP network to the primary Ethernet network interface.
- Set up a digital audio stream in the ST2110, AES67 or Ravenna formats.
- Configure the audio source to connect to the 9410A device, for example using the web interface (Web interface

function reference) or ANEMAN software.

- Connect ‘AES OUT 1-8’ to a fan-out cable and continue with XLR-to-XLR cables to each monitor. Please use cables intended for carrying AES/EBU digital audio. We strongly discourage the use of standard analogue microphone cables as this may reduce system performance.
- Connect the ‘SUBWOOFER LINK’ output to the ‘DIGITAL IN’ connector on a Genelec 7300 Series subwoofer.
- Connect the ‘AUX STEREO OUT’ output to stereo monitors or headphones through a digital-to-analog converter and a headphone amplifier.
- Connect CAT 5 (RJ45) GLM network cables between the 9401A, every monitor and subwoofer. Finally, connect to the GLM Adapter device (see Figure 2). The connection order of the other devices is not important. Connect the GLM Adapter device to your computer via USB.
- Install and run Genelec Loudspeaker Manager (GLM) software. All devices appear in GLM software monitor stack. Move devices from the monitor stack onto GLM's honeycomb grid, including the 9401A. You may want to drag and drop the 9401A icon close to the subwoofer connected to it (see Figure 6). When using multiple 9401A devices, you can identify a 9401A by clicking the 9401A icon in GLM, causing the associated 9401A device front panel power button light to blink.

Configuration

Configuration of the 9401A using GLM software has the following steps:

- Select the ‘Input Signal Type’ for the monitor Group to be ‘AES/EBU Digital’. Then, set the group status to ON state and the 9401A devices become active.
- Select the AES/EBU outputs in the 9401A to enable them. Note that you need to configure the audio streams. (see section Setting Up Audio Streams)
- Set the ‘AES/EBU Digital Input Mode’ to ‘Multichannel’ in the 7300 series subwoofer settings.
- In the ‘LFE Channel’ drop-down, select the AES output and the subframe that carries the LFE channel audio.

	1-AES	2	AES 1A - main DB15 Connector	AES 1B	AES 2A	AES 2B	AES 3A	AES 3B	AES 4A	AES 4B	AES 5A	AES 5B	AES 6A	AES 6B	AES 7A	AES 7B	AES 8A	AES 8B
ASIO #1	<input type="checkbox"/>	<input type="checkbox"/>	<input checked="" type="checkbox"/>	<input type="checkbox"/>	<input type="checkbox"/>	<input type="checkbox"/>	<input type="checkbox"/>	<input type="checkbox"/>	<input type="checkbox"/>	<input type="checkbox"/>	<input type="checkbox"/>	<input type="checkbox"/>	<input type="checkbox"/>	<input type="checkbox"/>	<input type="checkbox"/>	<input type="checkbox"/>	<input type="checkbox"/>	<input type="checkbox"/>
2	<input type="checkbox"/>	<input type="checkbox"/>	<input checked="" type="checkbox"/>	<input type="checkbox"/>	<input type="checkbox"/>	<input type="checkbox"/>	<input type="checkbox"/>	<input type="checkbox"/>	<input type="checkbox"/>	<input type="checkbox"/>	<input type="checkbox"/>	<input type="checkbox"/>	<input type="checkbox"/>	<input type="checkbox"/>	<input type="checkbox"/>	<input type="checkbox"/>	<input type="checkbox"/>	<input type="checkbox"/>
3	<input type="checkbox"/>	<input type="checkbox"/>	<input type="checkbox"/>	<input checked="" type="checkbox"/>	<input type="checkbox"/>	<input type="checkbox"/>	<input type="checkbox"/>	<input type="checkbox"/>	<input type="checkbox"/>	<input type="checkbox"/>	<input type="checkbox"/>	<input type="checkbox"/>	<input type="checkbox"/>	<input type="checkbox"/>	<input type="checkbox"/>	<input type="checkbox"/>	<input type="checkbox"/>	<input type="checkbox"/>
4	<input type="checkbox"/>	<input type="checkbox"/>	<input type="checkbox"/>	<input type="checkbox"/>	<input checked="" type="checkbox"/>	<input type="checkbox"/>	<input type="checkbox"/>	<input type="checkbox"/>	<input type="checkbox"/>	<input type="checkbox"/>	<input type="checkbox"/>	<input type="checkbox"/>	<input type="checkbox"/>	<input type="checkbox"/>	<input type="checkbox"/>	<input type="checkbox"/>	<input type="checkbox"/>	<input type="checkbox"/>
5	<input type="checkbox"/>	<input type="checkbox"/>	<input type="checkbox"/>	<input type="checkbox"/>	<input type="checkbox"/>	<input checked="" type="checkbox"/>	<input type="checkbox"/>	<input type="checkbox"/>	<input type="checkbox"/>	<input type="checkbox"/>	<input type="checkbox"/>	<input type="checkbox"/>	<input type="checkbox"/>	<input type="checkbox"/>	<input type="checkbox"/>	<input type="checkbox"/>	<input type="checkbox"/>	<input type="checkbox"/>
6	<input type="checkbox"/>	<input type="checkbox"/>	<input type="checkbox"/>	<input type="checkbox"/>	<input type="checkbox"/>	<input type="checkbox"/>	<input checked="" type="checkbox"/>	<input type="checkbox"/>	<input type="checkbox"/>	<input type="checkbox"/>	<input type="checkbox"/>	<input type="checkbox"/>	<input type="checkbox"/>	<input type="checkbox"/>	<input type="checkbox"/>	<input type="checkbox"/>	<input type="checkbox"/>	<input type="checkbox"/>
7	<input type="checkbox"/>	<input type="checkbox"/>	<input type="checkbox"/>	<input type="checkbox"/>	<input type="checkbox"/>	<input type="checkbox"/>	<input type="checkbox"/>	<input checked="" type="checkbox"/>	<input type="checkbox"/>	<input type="checkbox"/>	<input type="checkbox"/>	<input type="checkbox"/>	<input type="checkbox"/>	<input type="checkbox"/>	<input type="checkbox"/>	<input type="checkbox"/>	<input type="checkbox"/>	<input type="checkbox"/>
8	<input type="checkbox"/>	<input type="checkbox"/>	<input type="checkbox"/>	<input type="checkbox"/>	<input type="checkbox"/>	<input type="checkbox"/>	<input type="checkbox"/>	<input type="checkbox"/>	<input checked="" type="checkbox"/>	<input type="checkbox"/>	<input type="checkbox"/>	<input type="checkbox"/>	<input type="checkbox"/>	<input type="checkbox"/>	<input type="checkbox"/>	<input type="checkbox"/>	<input type="checkbox"/>	<input type="checkbox"/>
ASIO #2	<input type="checkbox"/>	<input type="checkbox"/>	<input type="checkbox"/>	<input type="checkbox"/>	<input type="checkbox"/>	<input type="checkbox"/>	<input type="checkbox"/>	<input type="checkbox"/>	<input type="checkbox"/>	<input checked="" type="checkbox"/>	<input type="checkbox"/>	<input type="checkbox"/>	<input type="checkbox"/>	<input type="checkbox"/>	<input type="checkbox"/>	<input type="checkbox"/>	<input type="checkbox"/>	<input type="checkbox"/>
2	<input type="checkbox"/>	<input type="checkbox"/>	<input type="checkbox"/>	<input type="checkbox"/>	<input type="checkbox"/>	<input type="checkbox"/>	<input type="checkbox"/>	<input type="checkbox"/>	<input type="checkbox"/>	<input type="checkbox"/>	<input checked="" type="checkbox"/>	<input type="checkbox"/>	<input type="checkbox"/>	<input type="checkbox"/>	<input type="checkbox"/>	<input type="checkbox"/>	<input type="checkbox"/>	<input type="checkbox"/>
3	<input type="checkbox"/>	<input type="checkbox"/>	<input type="checkbox"/>	<input type="checkbox"/>	<input type="checkbox"/>	<input type="checkbox"/>	<input type="checkbox"/>	<input type="checkbox"/>	<input type="checkbox"/>	<input type="checkbox"/>	<input type="checkbox"/>	<input checked="" type="checkbox"/>	<input type="checkbox"/>	<input type="checkbox"/>	<input type="checkbox"/>	<input type="checkbox"/>	<input type="checkbox"/>	<input type="checkbox"/>
4	<input type="checkbox"/>	<input type="checkbox"/>	<input type="checkbox"/>	<input type="checkbox"/>	<input type="checkbox"/>	<input type="checkbox"/>	<input type="checkbox"/>	<input type="checkbox"/>	<input type="checkbox"/>	<input type="checkbox"/>	<input type="checkbox"/>	<input type="checkbox"/>	<input checked="" type="checkbox"/>	<input type="checkbox"/>	<input type="checkbox"/>	<input type="checkbox"/>	<input type="checkbox"/>	<input type="checkbox"/>
5	<input type="checkbox"/>	<input type="checkbox"/>	<input type="checkbox"/>	<input type="checkbox"/>	<input type="checkbox"/>	<input type="checkbox"/>	<input type="checkbox"/>	<input type="checkbox"/>	<input type="checkbox"/>	<input type="checkbox"/>	<input type="checkbox"/>	<input type="checkbox"/>	<input type="checkbox"/>	<input checked="" type="checkbox"/>	<input type="checkbox"/>	<input type="checkbox"/>	<input type="checkbox"/>	<input type="checkbox"/>
6	<input type="checkbox"/>	<input type="checkbox"/>	<input type="checkbox"/>	<input type="checkbox"/>	<input type="checkbox"/>	<input type="checkbox"/>	<input type="checkbox"/>	<input type="checkbox"/>	<input type="checkbox"/>	<input type="checkbox"/>	<input type="checkbox"/>	<input type="checkbox"/>	<input type="checkbox"/>	<input type="checkbox"/>	<input checked="" type="checkbox"/>	<input type="checkbox"/>	<input type="checkbox"/>	<input type="checkbox"/>
7	<input type="checkbox"/>	<input type="checkbox"/>	<input type="checkbox"/>	<input type="checkbox"/>	<input type="checkbox"/>	<input type="checkbox"/>	<input type="checkbox"/>	<input type="checkbox"/>	<input type="checkbox"/>	<input type="checkbox"/>	<input type="checkbox"/>	<input type="checkbox"/>	<input type="checkbox"/>	<input type="checkbox"/>	<input type="checkbox"/>	<input checked="" type="checkbox"/>	<input type="checkbox"/>	<input type="checkbox"/>
8	<input type="checkbox"/>	<input type="checkbox"/>	<input type="checkbox"/>	<input type="checkbox"/>	<input type="checkbox"/>	<input type="checkbox"/>	<input type="checkbox"/>	<input type="checkbox"/>	<input type="checkbox"/>	<input type="checkbox"/>	<input type="checkbox"/>	<input type="checkbox"/>	<input type="checkbox"/>	<input type="checkbox"/>	<input type="checkbox"/>	<input type="checkbox"/>	<input checked="" type="checkbox"/>	<input type="checkbox"/>

Figure 7. Audio stream setup matrix

- Select the ‘+10 dB’ setting in the subwoofer configuration if the LFE channel audio requires the 10 dB boost in the subwoofer relative to the main audio channels.
- When all 9401A units in the system are set to ‘Group Off’ state, the ‘AES/EBU Digital Input Mode’ in all 7300 series subwoofers switch the AES/EBU digital stereo audio input to a standard stereo audio input.

Setting Up Audio Streams

While GLM is used for managing the LFE and sum channel output, the audio channel mapping is configured using

the internal HTTP web interface or by using ANEMAN software or similar. The web interface can be accessed through GLM, or directly from the browser using the device name. For example, if the name is "9401A_61", the web interface address is "http://9401a_61.local/advanced".

In the web interface:

- Open the I/O router tab
- On the matrix view, inputs are shown on the rows and outputs on the columns
- Set up streams by selecting input-output pairs in the matrix
- Changes are automatically applied

The 9401A can also be used to route AoIP streams to other compatible devices. Use the Session sources tab to create a new source. Refer to the Web interface function reference for additional information on configuring a source. After the source is created, it can be routed from the I/O router tab as explained above.

Acoustic Calibration

GLM software supports automatic calibration and system alignment of the complete monitoring system. To acoustically calibrate your setup, attach the measurement microphone included with your SAM Reference Controller or GLM Kit onto a microphone stand so that the microphone points upwards, then place the microphone at the listening position with the microphone top positioned at the listener's ear height.

Follow the steps in the GLM software to calibrate your entire system. The calibration process starts after you create a new group preset using 'File' | 'New' menu item. An existing group preset can be calibrated by selecting the 'Group Preset' | 'Calibrate' menu item. If you wish to disconnect the computer after calibration, save the GLM calibration onto the monitors, subwoofers and 9401A interfaces in your system. The settings can be stored using the GLM software menu item 'Store' | 'Store the Current Group Settings'. Note that monitors and subwoofers have a switch that enables stored settings. This switch must be set to 'ON' for operating the system with the stored settings. After removing the GLM network cable and powering the 9401A and all monitors off and on, the stored settings are enabled. We strongly recommend using GLM software and keeping the GLM network connected to access the full flexibility of the monitoring system.

Returning to Factory Settings

GLM settings stored in a 9401A can be erased by keeping the power switch depressed for more than 10 seconds before releasing it again. This returns the 9401A to its factory settings. After this, GLM software should be used to reconfigure the 9401A.

Operating Environment

The 9401A is designed for indoor use only, and the permissible ambient room temperature is 15-35 degrees Celsius (59-95°F) with a relative humidity of 20% to 80% (noncondensing). If the 9401A has been stored or transported in a cool environment before entering a warm room, please wait between 60 minutes before unpacking it, as this will prevent harmful condensation. Sufficient cooling must be ensured to keep the 9401A within optimal operating temperatures. No minimum clearance for ventilation is needed around the interface.

Maintenance

There are no user serviceable parts inside the 9401A. Maintenance or repair must only be performed by Genelec certified service personnel.

Guarantee

Genelec guarantees the 9401A for two years against manufacturing faults or defects that alter performance. Refer to the reseller for full sales and guarantee terms.

Safety Considerations

The 9401A has been designed in accordance with international safety standards. To ensure safe operation, the following warnings and precautions must be observed:

- Servicing and adjustment must only be performed by Genelec certified service personnel.
- The enclosure must not be opened.
- Do not use this product with a mains cable or mains outlet without a protective earth (potential-equalising) connection, as doing so may result in personal injury.
- To prevent fire or electric shock, never expose the unit to water or moisture.
- Do not place objects filled with liquid, such as vases, on or near the 9401A.
- The 9401A is never completely disconnected from mains power unless the mains cable is removed from the device or the mains outlet.

Compliance to FCC Rules

This device complies with part 15 of the FCC Rules. Operation is subject to both of the following two conditions:

- This device may not cause harmful interference.
- This device must accept any interference received, including interference that may cause undesired operation.
- **Note:** This equipment has been tested and found to comply with the limits for a Class B digital device, pursuant to part 15 of the FCC Rules. These limits are designed to provide reasonable protection against harmful interference in a residential installation. This equipment generates, uses, and can radiate radio frequency energy and, if not installed and used in accordance with the instructions, may cause harmful interference to radio communications.

There is no guarantee that interference will not occur in a particular installation. If this equipment does cause harmful interference to radio or television reception, which can be determined by turning the equipment off and on, the user is encouraged to try and correct the interference by one or more of the following measures:

- Reorient or relocate the receiving antenna.
- Increase the separation between the equipment and receiver.
- Connect the equipment into an outlet on a circuit different from that to which the receiver is connected.
- Consult the dealer or an experienced radio/TV technician for help. Modifications not expressly approved by the manufacturer can void the user's authority to operate the equipment under FCC rules.

SPECIFICATIONS

Description	Feature
Network interface	RJ-45 connector for 1000BASE-T
Network cable	Category 5e (Cat 5e) or higher-rated Ethernet cable
Number of Ethernet ports	2
Digital audio input format	ST2110-30, AES67, Ravenna
Digital audio input specifications	ST2022-7, NMOS IS-04, NMOS IS-05
Digital audio word length	Minimum 16 bits, maximum 32 bits. AES/EBU outputs maximum 24 bits
Digital audio sample rate	Minimum 44.1 kHz, maximum 192 kHz. Supports single-wire AES/EBU audio, does not support dual wire AES/EBU audio
Digital audio output format	AES/EBU (AES3-2003) Can also be used with S/P-DIF and AES3id signals when impedance converters are used
Digital audio output impedance	110 ohm differential
Digital audio output level	2.5 Vpp
Maximum AES/EBU cable length	100 m
End-to-end latency	< 3 ms (dependent on buffer size)
Clock synchronization	Sample accurate
Conversion accuracy	Bit perfect
Operating temperature	15-35 C (59-95 F)
Weight	2 kg (4.4 lbs)
Dimensions Height: Width: Depth:	43 mm (1 11/16 in) 483 mm (19 in) 105 mm (4 1/8 in)
Mains input voltage	100...240 VAC (50...60 Hz)
Mains tolerance	+/- 10 %
Operating power consumption	12 W
Idle power consumption	9 W
ISS state power consumption	4.5 W
Operating environment humidity	10-80 % non-condensing
EMC compliance	FCC part 15 Class B, CE

Web interface function reference

General settings

Device Name	
Device name	Unique name, consists of the model name (9401A) and serial number separated by an underscore.
Location	Optional entry to specify the physical location of the device (e.g., Listening Room).
Audio Configuration	
Sample rate	Selects the sample rate used for audio streaming, must be matched to the receiver/transmitter sample rate.
Frame size (@1FS)	Number of samples in an Ethernet packet. Lower values provide lower latencies but require better performance from switches and streaming equipment.
Session Sinks Global	
Safety Payout Delay (@1FS)	Additional delay that can be added to prevent dropouts or cuts. Value is given in samples which corresponds to the frame size (e.g., a value of 48 adds 1 ms of delay).
SSM (requires IGMP v3)	Source Specific Multicast, requires a router with IGMP v3 support.
Network	
Multi-Interface mode	Must be checked when using both network interfaces and for ST2022-7 support.
Interface 1 / Interface 2	
Link	<p><i>Up</i> with a green background: the interface is successfully connected to the network.</p> <p><i>Down</i>: the interface is not active.</p>
Name	<i>Primary</i> or <i>Secondary</i> , corresponding to the Ethernet connectors on the back of the 9401A.
Type	IP address assignment: <i>Static</i> , automatically assigned using <i>DHCP</i> or service discovery using <i>Zeroconf</i> .
Address	When using type <i>Static</i> , specifies address in IP format using dot-decimal notation.
Netmask	When using type <i>Static</i> , specifies the subnet mask using dot-decimal notation.
Gateway	When using type <i>Static</i> , specifies the router default gateway. Default route is 0.0.0.0.
Use as Primary Gateway	Selects which interface is used as the primary transmission route in ST2022-7 mode.

DNS	When using type <i>Static</i> , specifies the Domain Name System (DNS) server IP address.
-----	---

General settings

Device Name

9401A

This is the unique zeroconf device name. Other devices see this device name.

Location

Audio Configuration

Sample rate

Frame size (@1FS)

Session Sinks Global

Safety Playout Delay (@1FS)

SSM (requires IGMP v3) ☐

Network

Multi-interface mode ☐

Note: must be checked for ST2022-7 support.

Interface 1

Link Up

Name Primary

Type

Address

Netmask

Gateway ☒ Use as Primary Gateway

DNS

Apply

Note: changing the network settings require a reboot of the device.

PTP	
Global	
Type	Indicates if <i>PTP</i> (v1) or <i>PTPv2</i> is used.
Domain	PTP domain, must be set to the same value for connected master and slave devices.
DSCP	Differentiated Services Code Point, a 6-bit priority value for Quality of Service (QoS).
Master	
Manual	If not selected, uses default PTP settings.
Priority1	Selects the priority used for the Best Master Clock (BMC) selection algorithm. Lower values indicate higher priority.
Class	Allows assigning different clocks their own classes, each class having their own priority.
Accuracy	The difference between the clock and UTC, in nanoseconds
Priority2	Final priority in case it is not definitively decided by above criteria. Lower values indicate higher priority.
GMID	Unique grandmaster identifier for the clock, constructed from the device's MAC address.
Slave only	Forces the device to be slave only.
Delay mech.	Delay measurement mechanism between master or slave, End-to-End (E2E) or Peer-to-Peer (P2P).
Announce	PTP announcement interval in seconds.
Sync	PTP synchronization message interval in seconds.
Status	
GMID	Current PTP Grandmaster ID.
Lock	PTP lock status. Either <i>Unlocked</i> , <i>Locking</i> or <i>Locked</i> .
Interface 1 / Interface 2	
Master / Slave / Listening	Interface PTP status. <i>Listening</i> means the interface is not being used for synchronization.
GMID	Grandmaster ID of the interface clock.
Statistics	
Audio clock	Regulated difference to the current PTP master.
Network delta	Difference to the current PTP master, before the clock regulation algorithm.

PTP

Global

Type: PTPv2
Domain: 0
DSCP: 46 (EF)

Master ☐ Manual

Priority1: 255
Class: 255
Accuracy: 32
Priority2: 128
GMID: 30-D6-59-FF-FE-01-B0-06
Slave only: ☐
Delay mech.: E2E
Announce: 2 sec.
Sync: 0.125 sec.

Status

GMID: 30-D6-59-FF-FE-01-B0-06
Lock: Locked

Interface 1

Master
30-D6-59-FF-FE-01-B0-06

Statistics

ASIO Clock

ASIO Clock	
Multicast clock	
Auto	ASIO clock is activated only on the PTP master.
Address	IP address and port of the multicast clock.
DSCP	Differentiated Services Code Point, a 6-bit priority value for Quality of Service (QoS).

ASIO Clock

Multicast Clock

Address: 239.1.219.2:4242

DSCP: 34 (AF41)

Session sources	
Create session	Create a new source.
Configuration	
Enabled	Enables or disables the source.
IO	Selects the input source. For 9401A, this is always <i>Stream</i> .
Name	Name of the source, maximum length is 63 characters.
Description	Optional entry.
Output Interface(s)	Selects the source output. Either <i>Interface 1</i> , <i>Interface 2</i> , or <i>Interfaces 1&2 (ST_2022-7)</i> . (Dependent on General settings).
Auto-unicast, retrieve unicast address+port from sink (RTSP)	Automatically retrieve the sink's IP address, for Merging Technologies devices.
Address	Stream multicast IP address, port can also be specified separated by a colon :
Address sec	Stream multicast IP address for the secondary interface.
TTL	Time to live, number of hops the IP packet is allowed in the network. Recommended to leave at the default value.
Payload Type	RTP payload format. Recommended to leave at the default value.
Codec	Method for encoding the audio. Either linear 16/24 bits (L16, L24) or DSD (DSD64 – DSD64_32 – DSD128 – DSD128_32 – DSD256).
Frame size (samples)	Frame size of the source. (Dependent on General settings).
DSCP	Differentiated Services Code Point, a 6-bit priority value for Quality of Service (QoS).
RefClk PTP traceable	Allows sinks from different PTP masters to connect to the source, for example when connecting over the Internet.
Channels	Number of channels in the stream..
The URL of the SDP of this session is	Save the Session Description Protocol file for devices that require manual SDP.

Session sources

26

9401A_source1

Configuration

Enabled☒

IO

Stream

Name

9401A_source1

Description

Output Interface(s)

Interface 1

Auto-unicast☐ retrieve unicast address+port from sink (RTSP)

Address

239.1.185.162

☐ user defined

Address sec

☐ user defined

TTL

15

Payload Type

98

Codec

L24

Frame size (samples)

48

DSCP

34 (AF41)

RefCIK PTP traceable☐

Channels

Channel count

8

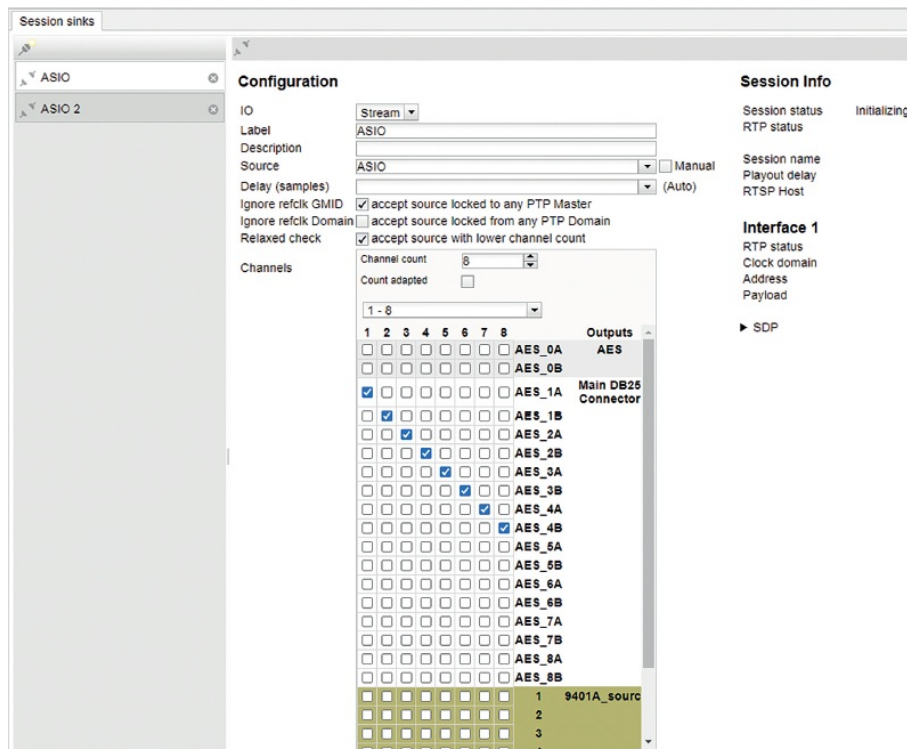
1 - 8

Inputs	1	2	3	4	5	6	7	8
AES	<input type="checkbox"/>	<input type="checkbox"/>	<input type="checkbox"/>	<input type="checkbox"/>	<input type="checkbox"/>	<input type="checkbox"/>	<input type="checkbox"/>	<input type="checkbox"/>
	<input type="checkbox"/>	<input type="checkbox"/>	<input type="checkbox"/>	<input type="checkbox"/>	<input type="checkbox"/>	<input type="checkbox"/>	<input type="checkbox"/>	<input type="checkbox"/>
ASIO	<input type="checkbox"/>	<input type="checkbox"/>	<input type="checkbox"/>	<input type="checkbox"/>	<input type="checkbox"/>	<input type="checkbox"/>	<input type="checkbox"/>	<input type="checkbox"/>
DB25 Connector-1	<input type="checkbox"/>	<input type="checkbox"/>	<input type="checkbox"/>	<input type="checkbox"/>	<input type="checkbox"/>	<input type="checkbox"/>	<input type="checkbox"/>	<input type="checkbox"/>
	<input type="checkbox"/>	<input type="checkbox"/>	<input type="checkbox"/>	<input type="checkbox"/>	<input type="checkbox"/>	<input type="checkbox"/>	<input type="checkbox"/>	<input type="checkbox"/>
	<input type="checkbox"/>	<input type="checkbox"/>	<input type="checkbox"/>	<input type="checkbox"/>	<input type="checkbox"/>	<input type="checkbox"/>	<input type="checkbox"/>	<input type="checkbox"/>
	<input type="checkbox"/>	<input type="checkbox"/>	<input type="checkbox"/>	<input type="checkbox"/>	<input type="checkbox"/>	<input type="checkbox"/>	<input type="checkbox"/>	<input type="checkbox"/>
	<input type="checkbox"/>	<input type="checkbox"/>	<input type="checkbox"/>	<input type="checkbox"/>	<input type="checkbox"/>	<input type="checkbox"/>	<input type="checkbox"/>	<input type="checkbox"/>
	<input type="checkbox"/>	<input type="checkbox"/>	<input type="checkbox"/>	<input type="checkbox"/>	<input type="checkbox"/>	<input type="checkbox"/>	<input type="checkbox"/>	<input type="checkbox"/>
	<input type="checkbox"/>	<input type="checkbox"/>	<input type="checkbox"/>	<input type="checkbox"/>	<input type="checkbox"/>	<input type="checkbox"/>	<input type="checkbox"/>	<input type="checkbox"/>
ASIO	<input type="checkbox"/>	<input type="checkbox"/>	<input type="checkbox"/>	<input type="checkbox"/>	<input type="checkbox"/>	<input type="checkbox"/>	<input type="checkbox"/>	<input type="checkbox"/>
DB25 Connector-9	<input type="checkbox"/>	<input type="checkbox"/>	<input type="checkbox"/>	<input type="checkbox"/>	<input type="checkbox"/>	<input type="checkbox"/>	<input type="checkbox"/>	<input type="checkbox"/>
	<input type="checkbox"/>	<input type="checkbox"/>	<input type="checkbox"/>	<input type="checkbox"/>	<input type="checkbox"/>	<input type="checkbox"/>	<input type="checkbox"/>	<input type="checkbox"/>
	<input type="checkbox"/>	<input type="checkbox"/>	<input type="checkbox"/>	<input type="checkbox"/>	<input type="checkbox"/>	<input type="checkbox"/>	<input type="checkbox"/>	<input type="checkbox"/>
	<input type="checkbox"/>	<input type="checkbox"/>	<input type="checkbox"/>	<input type="checkbox"/>	<input type="checkbox"/>	<input type="checkbox"/>	<input type="checkbox"/>	<input type="checkbox"/>
	<input type="checkbox"/>	<input type="checkbox"/>	<input type="checkbox"/>	<input type="checkbox"/>	<input type="checkbox"/>	<input type="checkbox"/>	<input type="checkbox"/>	<input type="checkbox"/>
	<input type="checkbox"/>	<input type="checkbox"/>	<input type="checkbox"/>	<input type="checkbox"/>	<input type="checkbox"/>	<input type="checkbox"/>	<input type="checkbox"/>	<input type="checkbox"/>
	<input type="checkbox"/>	<input type="checkbox"/>	<input type="checkbox"/>	<input type="checkbox"/>	<input type="checkbox"/>	<input type="checkbox"/>	<input type="checkbox"/>	<input type="checkbox"/>

The URL of the SDP of this session is <http://169.254.185.162/by-id/26>.

Session sinks

Session sinks	
Create session sink	Create a new sink.
Configuration	
IO	Selects the physical output. For 9401A, this is always <i>Stream</i> .
Label	Name of the sink.
Description	Optional entry.
Source	Selects the source, either from SAP or mDNS advertisers or manually by copying the SDP file from the source.
Delay (samples)	<p>Sets the playback delay.</p> <p>0: Automatically set the delay.</p> <p>Delays between devices must be matched.</p>
Ignore refclk GMID	Allows sinks from different PTP masters to connect to the source, for example when connecting over the Internet. (Dependent on the session sources settings).
Ignore refclk Domain	Allows sinks from different PTP clock domains to connect to the source, for example when connecting over the Internet. (Dependent on the session sources settings).
Relaxed check	Allows connection to a source that has less channels than the output.
Channels	Number of channels in the stream.
Session Info	
Session status	<p>Yellow background and <i>Started</i>: the sink is attempting to connect to the source. Green background and <i>Connected</i>: the sink is connected to the source.</p> <p>Red background: the sink can't connect to the source, see the message for details.</p>
RTP status	<p>Green background and <i>Receiving</i>: the sink is receiving RTP (audio) packets.</p> <p>Red background and <i>Muted</i>: the stream is muted, see the Interface RTP status for details.</p> <p>Yellow background and <i>Degraded</i>: In ST2022-7 mode, one interface is not receiving RTP packets.</p>
Session name	Source name from SDP file.
Playout delay	Total delay of the sink in samples and milliseconds.
RTSP Host	The source IP address.



Interface 1 / Interface 2	
RTP status	<p>Information about the incoming RTP packets. 0x10: receiving RTP packets.</p> <p>0x20 / 0x40: stream has been muted.</p> <p>0x80: both interfaces are not receiving RTP packets properly (ST2022-7 mode). 0x01: wrong RTP sequence id.</p> <p>0x02: wrong RTP SSRC.</p> <p>0x04: wrong RTP payload type. 0x08: wrong RTP SAC.</p>
Clock domain	PTP clock type and domain.
Address	Multicast IP address of the sink.
Payload	The payload type, codec, sample rate and number of channels of the stream.
SDP	Show the SDP file of the stream.

Stream status indicator	Description
	Network offline.
	Network error.
	Network receiver error.
	Network started.
	Network receive.
	Network transmit

Ins/Outs	
Stream	
Inputs	AoIP stream inputs, 64 channels.
Outputs	AoIP stream outputs, 64 channels.
AES	
Inputs	Not physically available on the 9401A.
Outputs	<i>Aux stereo out</i> connector on the 9401A.
Main DB25 Connector	
Inputs	Not physically available on the 9401A.
Outputs	Main monitor outputs, 16 channels.
Note: Names of the channels can be changed by double-clicking.	

Ins/Outs																																					
Stream																																					
Inputs	Outputs																																				
<table> <tr><th>Index</th><th>Name</th></tr> <tr><td>1</td><td>1</td></tr> <tr><td>2</td><td>2</td></tr> <tr><td>3</td><td>3</td></tr> <tr><td>4</td><td>4</td></tr> <tr><td>5</td><td>5</td></tr> <tr><td>6</td><td>6</td></tr> <tr><td>7</td><td>7</td></tr> <tr><td>8</td><td>8</td></tr> </table>	Index	Name	1	1	2	2	3	3	4	4	5	5	6	6	7	7	8	8	<table> <tr><th>Index</th><th>Name</th></tr> <tr><td>1</td><td>1</td></tr> <tr><td>2</td><td>2</td></tr> <tr><td>3</td><td>3</td></tr> <tr><td>4</td><td>4</td></tr> <tr><td>5</td><td>5</td></tr> <tr><td>6</td><td>6</td></tr> <tr><td>7</td><td>7</td></tr> <tr><td>8</td><td>8</td></tr> </table>	Index	Name	1	1	2	2	3	3	4	4	5	5	6	6	7	7	8	8
Index	Name																																				
1	1																																				
2	2																																				
3	3																																				
4	4																																				
5	5																																				
6	6																																				
7	7																																				
8	8																																				
Index	Name																																				
1	1																																				
2	2																																				
3	3																																				
4	4																																				
5	5																																				
6	6																																				
7	7																																				
8	8																																				
AES																																					
Inputs	Outputs																																				
<table> <tr><th>Index</th><th>Name</th></tr> <tr><td>1</td><td>1</td></tr> <tr><td>2</td><td>2</td></tr> </table>	Index	Name	1	1	2	2	<table> <tr><th>Index</th><th>Name</th></tr> <tr><td>1</td><td>AES_0A</td></tr> <tr><td>2</td><td>AES_0B</td></tr> </table>	Index	Name	1	AES_0A	2	AES_0B																								
Index	Name																																				
1	1																																				
2	2																																				
Index	Name																																				
1	AES_0A																																				
2	AES_0B																																				
Main DB25 Connector																																					
Inputs	Outputs																																				
<table> <tr><th>Index</th><th>Name</th></tr> </table>	Index	Name	<table> <tr><th>Index</th><th>Name</th></tr> <tr><td>1</td><td>AES_1A</td></tr> <tr><td>2</td><td>AES_1B</td></tr> <tr><td>3</td><td>AES_2A</td></tr> <tr><td>4</td><td>AES_2B</td></tr> <tr><td>5</td><td>AES_3A</td></tr> <tr><td>6</td><td>AES_3B</td></tr> <tr><td>7</td><td>AES_4A</td></tr> <tr><td>8</td><td>AES_4B</td></tr> </table>	Index	Name	1	AES_1A	2	AES_1B	3	AES_2A	4	AES_2B	5	AES_3A	6	AES_3B	7	AES_4A	8	AES_4B																
Index	Name																																				
Index	Name																																				
1	AES_1A																																				
2	AES_1B																																				
3	AES_2A																																				
4	AES_2B																																				
5	AES_3A																																				
6	AES_3B																																				
7	AES_4A																																				
8	AES_4B																																				

I/O Router	
Rows	Session sources as configured in the corresponding page.
Columns	Session sinks as configured in the corresponding page.
Row-column matrix	Creates connections between source and sink channels by selecting points in the matrix. Mixing of channels is not supported. (a sink channel can receive from one source channel).

I/O Router																																																		
		AES_0A - AES		AES_0B		AES_1A - main		AES_1B		AES_2A		AES_2B		AES_3A		AES_3B		AES_4A		AES_4B		AES_5A		AES_5B		AES_6A		AES_6B		AES_7A		AES_7B		AES_8A		AES_8B		9401A_Source1												
		AES_1	AES_2	AES_3	AES_4	AES_5	AES_6	AES_7	AES_8	AES_9	AES_10	AES_11	AES_12	AES_13	AES_14	AES_15	AES_16	AES_17	AES_18	AES_19	AES_20	AES_21	AES_22	AES_23	AES_24	AES_25	AES_26	AES_27	AES_28	AES_29	AES_30	AES_31	AES_32	AES_33	AES_34	AES_35	AES_36	AES_37	AES_38	AES_39	AES_40	AES_41	AES_42	AES_43	AES_44	AES_45	AES_46	AES_47	AES_48	
AES	1	<input type="checkbox"/>	<input type="checkbox"/>	<input type="checkbox"/>	<input type="checkbox"/>	<input type="checkbox"/>	<input type="checkbox"/>	<input type="checkbox"/>	<input type="checkbox"/>	<input type="checkbox"/>	<input type="checkbox"/>	<input type="checkbox"/>	<input type="checkbox"/>	<input type="checkbox"/>	<input type="checkbox"/>	<input type="checkbox"/>	<input type="checkbox"/>	<input type="checkbox"/>	<input type="checkbox"/>	<input type="checkbox"/>	<input type="checkbox"/>	<input type="checkbox"/>	<input type="checkbox"/>	<input type="checkbox"/>	<input type="checkbox"/>	<input type="checkbox"/>	<input type="checkbox"/>	<input type="checkbox"/>	<input type="checkbox"/>	<input type="checkbox"/>	<input type="checkbox"/>	<input type="checkbox"/>	<input type="checkbox"/>	<input type="checkbox"/>	<input type="checkbox"/>	<input type="checkbox"/>	<input type="checkbox"/>	<input type="checkbox"/>	<input type="checkbox"/>	<input type="checkbox"/>	<input type="checkbox"/>	<input type="checkbox"/>	<input type="checkbox"/>	<input type="checkbox"/>	<input type="checkbox"/>	<input type="checkbox"/>	<input type="checkbox"/>	<input type="checkbox"/>	<input type="checkbox"/>	
	2	<input type="checkbox"/>	<input type="checkbox"/>	<input type="checkbox"/>	<input type="checkbox"/>	<input type="checkbox"/>	<input type="checkbox"/>	<input type="checkbox"/>	<input type="checkbox"/>	<input type="checkbox"/>	<input type="checkbox"/>	<input type="checkbox"/>	<input type="checkbox"/>	<input type="checkbox"/>	<input type="checkbox"/>	<input type="checkbox"/>	<input type="checkbox"/>	<input type="checkbox"/>	<input type="checkbox"/>	<input type="checkbox"/>	<input type="checkbox"/>	<input type="checkbox"/>	<input type="checkbox"/>	<input type="checkbox"/>	<input type="checkbox"/>	<input type="checkbox"/>	<input type="checkbox"/>	<input type="checkbox"/>	<input type="checkbox"/>	<input type="checkbox"/>	<input type="checkbox"/>	<input type="checkbox"/>	<input type="checkbox"/>	<input type="checkbox"/>	<input type="checkbox"/>	<input type="checkbox"/>	<input type="checkbox"/>	<input type="checkbox"/>	<input type="checkbox"/>	<input type="checkbox"/>	<input type="checkbox"/>	<input type="checkbox"/>	<input type="checkbox"/>	<input type="checkbox"/>	<input type="checkbox"/>	<input type="checkbox"/>	<input type="checkbox"/>	<input type="checkbox"/>	<input type="checkbox"/>	<input type="checkbox"/>
ASIO	1	<input type="checkbox"/>	<input type="checkbox"/>	<input checked="" type="checkbox"/>	<input type="checkbox"/>	<input type="checkbox"/>	<input type="checkbox"/>	<input type="checkbox"/>	<input type="checkbox"/>	<input type="checkbox"/>	<input type="checkbox"/>	<input type="checkbox"/>	<input type="checkbox"/>	<input type="checkbox"/>	<input type="checkbox"/>	<input type="checkbox"/>	<input type="checkbox"/>	<input type="checkbox"/>	<input type="checkbox"/>	<input type="checkbox"/>	<input type="checkbox"/>	<input type="checkbox"/>	<input type="checkbox"/>	<input type="checkbox"/>	<input type="checkbox"/>	<input type="checkbox"/>	<input type="checkbox"/>	<input type="checkbox"/>	<input type="checkbox"/>	<input type="checkbox"/>	<input type="checkbox"/>	<input type="checkbox"/>	<input type="checkbox"/>	<input type="checkbox"/>	<input type="checkbox"/>	<input type="checkbox"/>	<input type="checkbox"/>	<input type="checkbox"/>	<input type="checkbox"/>	<input type="checkbox"/>	<input type="checkbox"/>	<input type="checkbox"/>	<input type="checkbox"/>	<input type="checkbox"/>	<input type="checkbox"/>	<input type="checkbox"/>	<input type="checkbox"/>	<input type="checkbox"/>	<input type="checkbox"/>	<input type="checkbox"/>
	2	<input type="checkbox"/>	<input type="checkbox"/>	<input type="checkbox"/>	<input checked="" type="checkbox"/>	<input type="checkbox"/>	<input type="checkbox"/>	<input type="checkbox"/>	<input type="checkbox"/>	<input type="checkbox"/>	<input type="checkbox"/>	<input type="checkbox"/>	<input type="checkbox"/>	<input type="checkbox"/>	<input type="checkbox"/>	<input type="checkbox"/>	<input type="checkbox"/>	<input type="checkbox"/>	<input type="checkbox"/>	<input type="checkbox"/>	<input type="checkbox"/>	<input type="checkbox"/>	<input type="checkbox"/>	<input type="checkbox"/>	<input type="checkbox"/>	<input type="checkbox"/>	<input type="checkbox"/>	<input type="checkbox"/>	<input type="checkbox"/>	<input type="checkbox"/>	<input type="checkbox"/>	<input type="checkbox"/>	<input type="checkbox"/>	<input type="checkbox"/>	<input type="checkbox"/>	<input type="checkbox"/>	<input type="checkbox"/>	<input type="checkbox"/>	<input type="checkbox"/>	<input type="checkbox"/>	<input type="checkbox"/>	<input type="checkbox"/>	<input type="checkbox"/>	<input type="checkbox"/>	<input type="checkbox"/>	<input type="checkbox"/>	<input type="checkbox"/>	<input type="checkbox"/>	<input type="checkbox"/>	<input type="checkbox"/>
	3	<input type="checkbox"/>	<input type="checkbox"/>	<input type="checkbox"/>	<input type="checkbox"/>	<input checked="" type="checkbox"/>	<input type="checkbox"/>	<input type="checkbox"/>	<input type="checkbox"/>	<input type="checkbox"/>	<input type="checkbox"/>	<input type="checkbox"/>	<input type="checkbox"/>	<input type="checkbox"/>	<input type="checkbox"/>	<input type="checkbox"/>	<input type="checkbox"/>	<input type="checkbox"/>	<input type="checkbox"/>	<input type="checkbox"/>	<input type="checkbox"/>	<input type="checkbox"/>	<input type="checkbox"/>	<input type="checkbox"/>	<input type="checkbox"/>	<input type="checkbox"/>	<input type="checkbox"/>	<input type="checkbox"/>	<input type="checkbox"/>	<input type="checkbox"/>	<input type="checkbox"/>	<input type="checkbox"/>	<input type="checkbox"/>	<input type="checkbox"/>	<input type="checkbox"/>	<input type="checkbox"/>	<input type="checkbox"/>	<input type="checkbox"/>	<input type="checkbox"/>	<input type="checkbox"/>	<input type="checkbox"/>	<input type="checkbox"/>	<input type="checkbox"/>	<input type="checkbox"/>	<input type="checkbox"/>	<input type="checkbox"/>	<input type="checkbox"/>	<input type="checkbox"/>	<input type="checkbox"/>	<input type="checkbox"/>
	4	<input type="checkbox"/>	<input type="checkbox"/>	<input type="checkbox"/>	<input type="checkbox"/>	<input type="checkbox"/>	<input checked="" type="checkbox"/>	<input type="checkbox"/>	<input type="checkbox"/>	<input type="checkbox"/>	<input type="checkbox"/>	<input type="checkbox"/>	<input type="checkbox"/>	<input type="checkbox"/>	<input type="checkbox"/>	<input type="checkbox"/>	<input type="checkbox"/>	<input type="checkbox"/>	<input type="checkbox"/>	<input type="checkbox"/>	<input type="checkbox"/>	<input type="checkbox"/>	<input type="checkbox"/>	<input type="checkbox"/>	<input type="checkbox"/>	<input type="checkbox"/>	<input type="checkbox"/>	<input type="checkbox"/>	<input type="checkbox"/>	<input type="checkbox"/>	<input type="checkbox"/>	<input type="checkbox"/>	<input type="checkbox"/>	<input type="checkbox"/>	<input type="checkbox"/>	<input type="checkbox"/>	<input type="checkbox"/>	<input type="checkbox"/>	<input type="checkbox"/>	<input type="checkbox"/>	<input type="checkbox"/>	<input type="checkbox"/>	<input type="checkbox"/>	<input type="checkbox"/>	<input type="checkbox"/>	<input type="checkbox"/>	<input type="checkbox"/>	<input type="checkbox"/>	<input type="checkbox"/>	<input type="checkbox"/>
	5	<input type="checkbox"/>	<input type="checkbox"/>	<input type="checkbox"/>	<input type="checkbox"/>	<input type="checkbox"/>	<input type="checkbox"/>	<input checked="" type="checkbox"/>	<input type="checkbox"/>	<input type="checkbox"/>	<input type="checkbox"/>	<input type="checkbox"/>	<input type="checkbox"/>	<input type="checkbox"/>	<input type="checkbox"/>	<input type="checkbox"/>	<input type="checkbox"/>	<input type="checkbox"/>	<input type="checkbox"/>	<input type="checkbox"/>	<input type="checkbox"/>	<input type="checkbox"/>	<input type="checkbox"/>	<input type="checkbox"/>	<input type="checkbox"/>	<input type="checkbox"/>	<input type="checkbox"/>	<input type="checkbox"/>	<input type="checkbox"/>	<input type="checkbox"/>	<input type="checkbox"/>	<input type="checkbox"/>	<input type="checkbox"/>	<input type="checkbox"/>	<input type="checkbox"/>	<input type="checkbox"/>	<input type="checkbox"/>	<input type="checkbox"/>	<input type="checkbox"/>	<input type="checkbox"/>	<input type="checkbox"/>	<input type="checkbox"/>	<input type="checkbox"/>	<input type="checkbox"/>	<input type="checkbox"/>	<input type="checkbox"/>	<input type="checkbox"/>	<input type="checkbox"/>	<input type="checkbox"/>	<input type="checkbox"/>
	6	<input type="checkbox"/>	<input type="checkbox"/>	<input type="checkbox"/>	<input type="checkbox"/>	<input type="checkbox"/>	<input type="checkbox"/>	<input type="checkbox"/>	<input type="checkbox"/>	<input type="checkbox"/>	<input type="checkbox"/>	<input type="checkbox"/>	<input type="checkbox"/>	<input type="checkbox"/>	<input type="checkbox"/>	<input type="checkbox"/>	<input type="checkbox"/>	<input type="checkbox"/>	<input type="checkbox"/>	<input type="checkbox"/>	<input type="checkbox"/>	<input type="checkbox"/>	<input type="checkbox"/>	<input type="checkbox"/>	<input type="checkbox"/>	<input type="checkbox"/>	<input type="checkbox"/>	<input type="checkbox"/>	<input type="checkbox"/>	<input type="checkbox"/>	<input type="checkbox"/>	<input type="checkbox"/>	<input type="checkbox"/>	<input type="checkbox"/>	<input type="checkbox"/>	<input type="checkbox"/>	<input type="checkbox"/>	<input type="checkbox"/>	<input type="checkbox"/>	<input type="checkbox"/>	<input type="checkbox"/>	<input type="checkbox"/>	<input type="checkbox"/>	<input type="checkbox"/>	<input type="checkbox"/>	<input type="checkbox"/>	<input type="checkbox"/>	<input type="checkbox"/>	<input type="checkbox"/>	<input type="checkbox"/>
	7	<input type="checkbox"/>	<input type="checkbox"/>	<input type="checkbox"/>	<input type="checkbox"/>	<input type="checkbox"/>	<input type="checkbox"/>	<input type="checkbox"/>	<input type="checkbox"/>	<input type="checkbox"/>	<input type="checkbox"/>	<input type="checkbox"/>	<input type="checkbox"/>	<input type="checkbox"/>	<input type="checkbox"/>	<input type="checkbox"/>	<input type="checkbox"/>	<input type="checkbox"/>	<input type="checkbox"/>	<input type="checkbox"/>	<input type="checkbox"/>	<input type="checkbox"/>	<input type="checkbox"/>	<input type="checkbox"/>	<input type="checkbox"/>	<input type="checkbox"/>	<input type="checkbox"/>	<input type="checkbox"/>	<input type="checkbox"/>	<input type="checkbox"/>	<input type="checkbox"/>	<input type="checkbox"/>	<input type="checkbox"/>	<input type="checkbox"/>	<input type="checkbox"/>	<input type="checkbox"/>	<input type="checkbox"/>	<input type="checkbox"/>	<input type="checkbox"/>	<input type="checkbox"/>	<input type="checkbox"/>	<input type="checkbox"/>	<input type="checkbox"/>	<input type="checkbox"/>	<input type="checkbox"/>	<input type="checkbox"/>	<input type="checkbox"/>	<input type="checkbox"/>	<input type="checkbox"/>	<input type="checkbox"/>
	8	<input type="checkbox"/>	<input type="checkbox"/>	<input type="checkbox"/>	<input type="checkbox"/>	<input type="checkbox"/>	<input type="checkbox"/>	<input type="checkbox"/>	<input type="checkbox"/>	<input type="checkbox"/>	<input type="checkbox"/>	<input type="checkbox"/>	<input type="checkbox"/>	<input type="checkbox"/>	<input type="checkbox"/>	<input type="checkbox"/>	<input type="checkbox"/>	<input type="checkbox"/>	<input type="checkbox"/>	<input type="checkbox"/>	<input type="checkbox"/>	<input type="checkbox"/>	<input type="checkbox"/>	<input type="checkbox"/>	<input type="checkbox"/>	<input type="checkbox"/>	<input type="checkbox"/>	<input type="checkbox"/>	<input type="checkbox"/>	<input type="checkbox"/>	<input type="checkbox"/>	<input type="checkbox"/>	<input type="checkbox"/>	<input type="checkbox"/>	<input type="checkbox"/>	<input type="checkbox"/>	<input type="checkbox"/>	<input type="checkbox"/>	<input type="checkbox"/>	<input type="checkbox"/>	<input type="checkbox"/>	<input type="checkbox"/>	<input type="checkbox"/>	<input type="checkbox"/>	<input type="checkbox"/>	<input type="checkbox"/>	<input type="checkbox"/>	<input type="checkbox"/>	<input type="checkbox"/>	<input type="checkbox"/>
ASIO 21	1	<input type="checkbox"/>	<input type="checkbox"/>	<input type="checkbox"/>	<input type="checkbox"/>	<input type="checkbox"/>	<input type="checkbox"/>	<input type="checkbox"/>	<input type="checkbox"/>	<input type="checkbox"/>	<input type="checkbox"/>	<input type="checkbox"/>	<input type="checkbox"/>	<input type="checkbox"/>	<input type="checkbox"/>	<input type="checkbox"/>	<input type="checkbox"/>	<input type="checkbox"/>	<input type="checkbox"/>	<input type="checkbox"/>	<input type="checkbox"/>	<input type="checkbox"/>	<input type="checkbox"/>	<input type="checkbox"/>	<input type="checkbox"/>	<input type="checkbox"/>	<input type="checkbox"/>	<input type="checkbox"/>	<input type="checkbox"/>	<input type="checkbox"/>	<input type="checkbox"/>	<input type="checkbox"/>	<input type="checkbox"/>	<input type="checkbox"/>	<input type="checkbox"/>	<input type="checkbox"/>	<input type="checkbox"/>	<input type="checkbox"/>	<input type="checkbox"/>	<input type="checkbox"/>	<input type="checkbox"/>	<input type="checkbox"/>	<input type="checkbox"/>	<input type="checkbox"/>	<input type="checkbox"/>	<input type="checkbox"/>	<input type="checkbox"/>	<input type="checkbox"/>	<input type="checkbox"/>	<input type="checkbox"/>
	2	<input type="checkbox"/>	<input type="checkbox"/>	<input type="checkbox"/>	<input type="checkbox"/>	<input type="checkbox"/>	<input type="checkbox"/>	<input type="checkbox"/>	<input type="checkbox"/>	<input type="checkbox"/>	<input type="checkbox"/>	<input type="checkbox"/>	<input type="checkbox"/>	<input type="checkbox"/>	<input type="checkbox"/>																																			

Statistics

Sink	Name of the sink being measured.
Min	The minimum latency measured from Port 1 / Port 2 to output. Does not include latency from source buffer. Resets after refreshing the web page.
Max	The maximum latency measured from Port 1 / Port 2 to output . Does not include latency from source buffer. Resets after refreshing the web page.
Graph	Displays the latency data on a graph at 2 s intervals.
Note: The values can be reset by refreshing the page.	

NMOS General Settings	
Enable	Enable or disable NMOS client.
Port	NMOS communication port.
Flush streamer address on disable	When selected, will empty streamer multicast addresses each time the streamer disabled. Allows interoperability with Nevion .
Set UUID from Names	When selected, will set the Universally Unique Identifier from the source name. Source names must be unique in this case.
Configure Registration Server	
Mode	NMOS server communication mode. Either <i>Static Address</i> , <i>Search Domain</i> by providing a network domain, or automatic discovery by <i>mDNS</i> .
Address	When <i>Mode</i> is set to <i>Static Address</i> , specifies the NMOS server IP address.
Search domain	When <i>Mode</i> is set to <i>Search Domain</i> , specifies the DNS domain to search in.
Registration Server	
Server Name	NMOS server name provided by the server via DNS or mDNS .
Host	NMOS host name provided by the server via DNS or mDNS.
Address	NMOS server address.
Port	NMOS server port.
Registered	<i>True</i> if registration with the server is successful.
Note: The NMOS must be disabled to change the settings.	

NMOS

NMOS

NMOS General Settings

Enable ☐
 Port
 Flush streamer address on disable ☐
 Set UUID from Names (needs a device restart when changing node name) ☐

Configure Registration Server

Mode
 Address
 Search domain Suggested:

Registration Server

Server Name
 Host
 Address
 Port
 Registered ☐ false

System

Build Number	
Build Number	Currently installed firmware version.
Configuration file	
Download	Save device configuration to a file.
Upload	Save device configuration from a file.
Commands	
Reboot	Reboot the AoIP module. For applying settings.
Reboot to Factory	Reboot the AoIP module to factory default values.
Restart	Fully restart the AoIP module.
Save	Save the current configuration.
Debug	
Get Report	Generates a debug report.
Get Device Status	Display the device status.
Get Device Engine Status	Display the device engine status.

System

Build Number

1.6.0b56768

Configuration file

Download Upload

Commands

Reboot

Reboot to Factory

Restart

Save

Debug

Get Report

Get Device Status Get Device Engine Status

Static top panel

Device selection drop-down menu	When multiple devices exist in the same network, can be used to change between their WebApps.
Vendor	Device vendor name. (Genelec)
Product	Device name. (9401A)
Serial	Serial number of the device.
Identify Me	When using multiple devices, can be used to identify which device is being configured. When checked, the 9401A flashes its power button LED.



Vendor Genelec

Product 9401A

Serial

Identify Me ☐



9401A

?

International enquiries:

Genelec, Olvitie 5


FIN-74100, Iisalmi, Finland

Phone +358 17 83881

Fax +358 17 812 267

Email genelec@genelec.com

Documents / Resources

<div>9401A</div> <div>  </div>	<div> GENELEC 9401A Multichannel Audio Over IP Interface [pdf] Instruction Manual </div> <div> 9401A Multichannel Audio Over IP Interface, 9401A, Multichannel Audio Over IP Interface, Audio Over IP Interface, Over IP Interface, IP Interface, Interface </div>
---	--

References

- [G World Leader in Studio Monitors - Genelec.com](#)
- [User Manual](#)

[Manuals+](#), [Privacy Policy](#)

This website is an independent publication and is neither affiliated with nor endorsed by any of the trademark owners. The "Bluetooth®" word mark and logos are registered trademarks owned by Bluetooth SIG, Inc. The "Wi-Fi®" word mark and logos are registered trademarks owned by the Wi-Fi Alliance. Any use of these marks on this website does not imply any affiliation with or endorsement.